

Explore

COLLECTIONS
PERFORMANCES
GARDENS

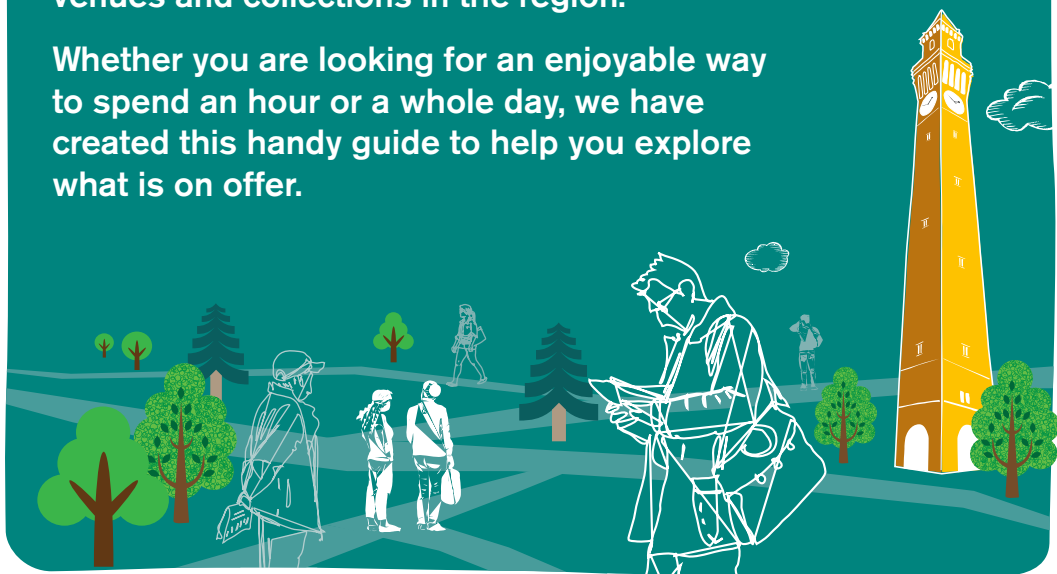
EXHIBITIONS
GALLERIES
ARCHIVES
MUSEUMS



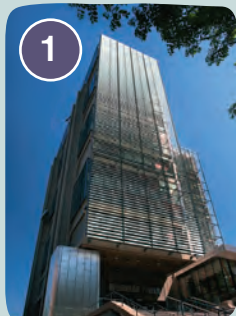
Welcome

From museums and art exhibitions to comedy nights and classical concerts, the University of Birmingham is home to some of the best venues and collections in the region.

Whether you are looking for an enjoyable way to spend an hour or a whole day, we have created this handy guide to help you explore what is on offer.



1



CADBURY RESEARCH LIBRARY

With unique archive and manuscript collections of over 4 million items and more than 200,000 rare printed books, the Cadbury Research Library is a treasure trove for researchers. Home to the University's historic collections on a wide array of subjects, from Middle Eastern manuscripts to the collection of Noel Coward, the Cadbury Research Library offers a dedicated reading room for all interested researchers to explore and enjoy the collections.

www.birmingham.ac.uk/crl

"I loved working in your archive, which is tranquil, well organised, friendly and fast"

Left: Muirhead Tower. Top right: Illuminated Book of Hours, c. 1500.
Bottom right: Works of Chaucer, 1561.

2 WINTERBOURNE HOUSE & GARDEN

Tucked away in a leafy corner of campus, this delightful Edwardian house has been lovingly restored to its Arts and Crafts splendour and is now open to the public seven days a week. Inside, the history of industrial Birmingham is told through the lives of John Nettlefold and his family, who built the home in 1903.

Outside, wander through the seven-acre botanic garden and you would hardly believe you're only two miles from the city centre. University of Birmingham staff

and students benefit from free entry, and standard admission is £6. A year-round programme of events ranging from RHS accredited courses on Horticulture to outdoor Shakespeare productions are also on offer. www.winterbourne.org.uk

"Thank you Winterbourne for giving me and my mom and dad a wonderful time! Thank you also to the gardeners!"

Cora, 12, Birmingham



Top right: The Barber Red Gallery. Bottom left: Edgar Degas (1834-1917) *Jockeys Before the Race*. Bottom right: Claude Monet (1840-1926) *The Church at Varengeville*.

3 THE BARBER INSTITUTE OF FINE ARTS

Monet, Manet, and Magritte; Renoir, Rubens, Rossetti and Rodin; Turner and Degas, Gainsborough, Gauguin and Van Gogh... Major works by these – and many more – of the greatest names in the history of western art adorn the galleries at the Barber, the Midlands' own mini National Gallery. Birmingham's finest Art Deco building, the Barber also contains the finest collection of Roman, Byzantine and medieval coins in Europe, in its own

stunning coin gallery. Exciting temporary exhibitions run year-round, along with by a busy programme of family workshops, gallery tours and talks, concerts, lectures, practical art and literature workshops – with something for all ages.

Admission to the galleries, including temporary exhibitions, is free. www.barber.org.uk

4 BARBER CONCERTS

The Barber Institute of Fine Arts is home to Europe's finest art deco concert hall, and boasts a classical chamber music and recital series dating back to 1945. The internationally acclaimed Barber Concerts series includes regular evening and lunchtime concerts, opera performances, and exciting family concerts across the year – offering something for all classical music lovers. Join us every Friday in University term time for our free lunchtime concerts. www.barber.org.uk/concerts

5 THE BRAMALL

Entertainment awaits you at the Bramall. With an unrivalled mix of live music, classical concerts, comedy and evenings with celebrity speakers – you will not want to miss out. Browse events and book tickets at www.thebramall.co.uk

"It's always such a treat to watch something in The Bramall... it's such a stunning venue."
Freya George, Redbrick



6 UNIVERSITY MUSIC

University Music provides music-making opportunities for over 1000 students, staff and members of the local community. With a year-round programme of concerts and events University Music promotes music-making for personal wellbeing and pleasure. Simply come along to a concert and enjoy the ensembles – or get involved and become a member of one of over thirty five performing groups, including choirs, orchestras and jazz ensembles. www.birmingham.ac.uk/universitymusic



7 RESEARCH & CULTURAL COLLECTIONS

From alabaster vessels to zoomorphic masks, from medical instruments to modern British landscape paintings, the Research and Cultural Collections looks after a vast range of extraordinary artefacts. The collection is made up of thousands of objects, displayed within related departments and around the campuses. There are a number of accessible campus trails including a Sculpture trail, the Blue Plaque trail and an Eduardo Paolozzi Pop

Art trail. Regular exhibitions are displayed in the Aston Webb Rotunda with a programme that celebrates and showcases our collections and current academic research. The collections can be explored in person and online, with lots to see on our social media channels including online exhibitions and behind-the-scenes blogs.

www.birmingham.ac.uk/rcc

Top left: Eduardo Paolozzi (1924-2005) *Faraday*.
Top right: The Danford Collection *Figure of Mother and Child*.
Bottom: Aston Webb Rotunda.



8 THE LAPWORTH MUSEUM OF GEOLOGY

The Lapworth Museum of Geology holds the finest and most extensive collections of fossils, minerals and rocks in the Midlands. Dating back to 1880, it is one of the oldest specialist geological museums in the UK.

The collections contain in excess of 250,000 specimens. In addition to rocks, fossils and minerals, there are large collections of early geological maps, equipment, models, photographic material, and also zoological

specimens and stone axes. The Lapworth Archive contains one of the most complete records of the work of a scientist of that period. A visit to the Lapworth Museum provides an insight into how the Earth formed and changed through time, and how life on Earth developed and evolved.

www.birmingham.ac.uk/lapworth-museum

Explore



AN HOUR

Why not head to The Barber Institute of Fine Arts for a lunchtime concert or a first visit around the galleries.



2 HOURS

Visit one of our fantastic museums or collections – be it art, geology or the manuscripts and rare book archive.



HALF-DAY

Explore the sculpture trail across campus and enjoy afternoon tea in Winterbourne House and Garden.

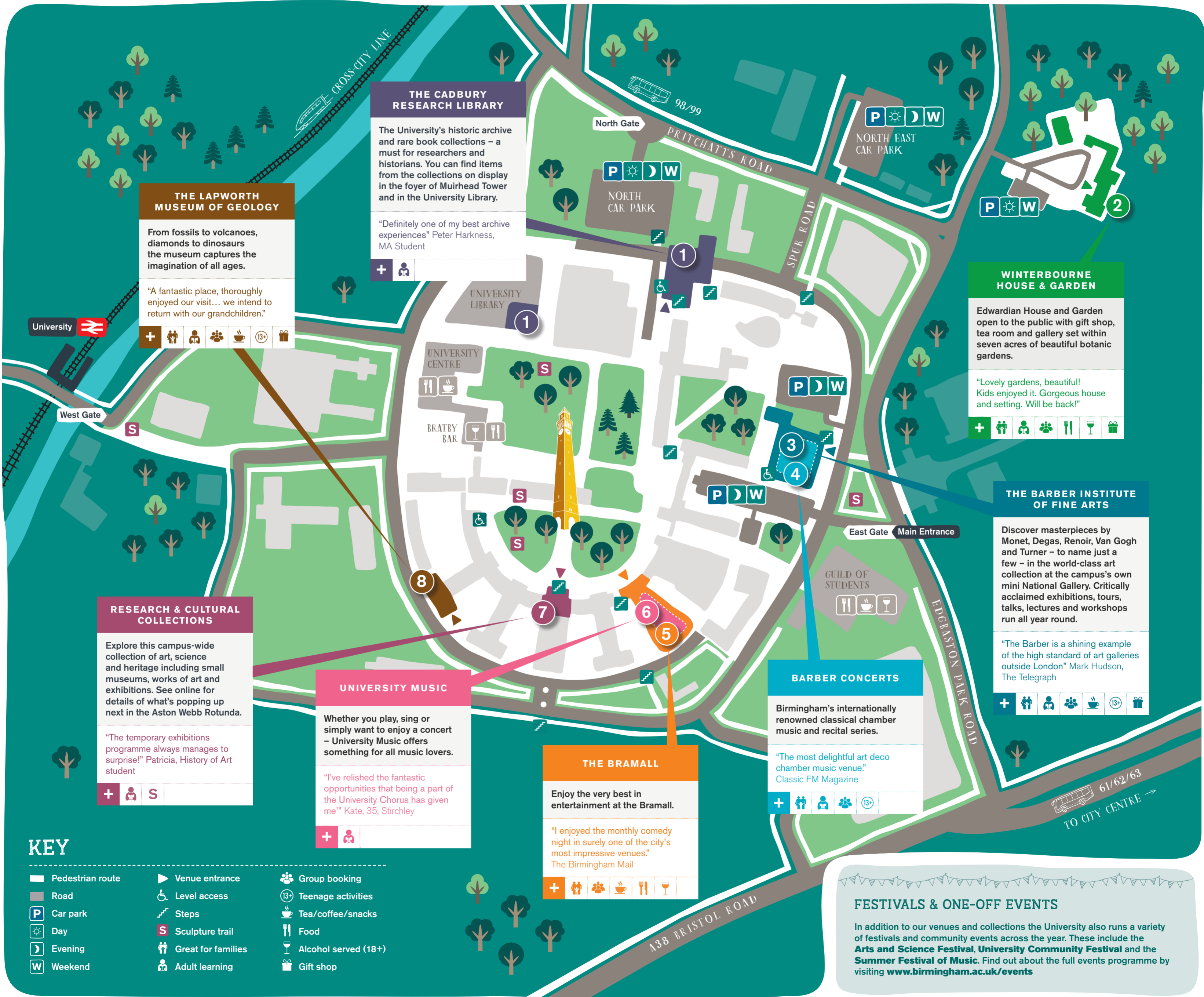


AN EVENING

Enjoy a comedy night or spoken word event in The Bramall, or see a University Music concert. Grab a bite to eat or enjoy a few pre-event drinks in the Bratby Bar.

HOW LONG HAVE YOU GOT?

Not sure what to do or where to go? Here are a few suggestions to get you started...



THE LAPWORTH MUSEUM OF GEOLOGY

From fossils to volcanoes, diamonds to dinosaurs the museum captures the imagination of all ages.

"A fantastic place, thoroughly enjoyed our visit... we intend to return with our grandchildren."



THE CADBURY RESEARCH LIBRARY

The University's historic archive and rare book collections – a must for researchers and historians. You can find items from the collections on display in the foyer of Muirhead Tower and in the University Library.

"Definitely one of my best archive experiences" Peter Harkness, MA Student



RESEARCH & CULTURAL COLLECTIONS

Explore this campus-wide collection of art, science and heritage including small museums, works of art and exhibitions. See online for details of what's popping up next in the Aston Webb Rotunda.

"The temporary exhibitions programme always manages to surprise!" Patricia, History of Art student



UNIVERSITY MUSIC

Whether you play, sing or simply want to enjoy a concert – University Music offers something for all music lovers.

"I've relished the fantastic opportunities that being a part of the University Chorus has given me" Kate, 35, Stirling



THE BRAMALL

Enjoy the very best in entertainment at the Bramall.

"I enjoyed the monthly comedy night in surely one of the city's most impressive venues." The Birmingham Mail



WINTERBOURNE HOUSE & GARDEN

Edwardian House and Garden open to the public with gift shop, tea room and gallery set within seven acres of beautiful botanic gardens.

"Lovely gardens, beautiful! Kids enjoyed it. Gorgeous house and setting. Will be back!"



THE BARBER INSTITUTE OF FINE ARTS

Discover masterpieces by Monet, Degas, Renoir, Van Gogh and Turner – to name just a few – in the world-class art collection at the campus's own mini National Gallery. Critically acclaimed exhibitions, tours, talks, lectures and workshops run all year round.

"The Barber is a shining example of the high standard of art galleries outside London" Mark Hudson, The Telegraph



BARBER CONCERTS

Birmingham's internationally renowned classical chamber music and recital series.

"The most delightful art deco chamber music venue." Classic FM Magazine



KEY

- Pedestrian route
- Road
- Car park
- Day
- Evening
- Weekend
- Venue entrance
- Level access
- Steps
- Sculpture trail
- Great for families
- Adult learning
- Group booking
- Teenage activities
- Tea/coffee/snacks
- Food
- Alcohol served (18+)
- Gift shop

FESTIVALS & ONE-OFF EVENTS

In addition to our venues and collections the University also runs a variety of festivals and community events across the year. These include the **Arts and Science Festival**, **University Community Festival** and the **Summer Festival of Music**. Find out about the full events programme by visiting www.birmingham.ac.uk/events



HOW TO FIND US

Location

The University of Birmingham is located in south-west Birmingham, approximately 3 miles from the city centre. For maps and information about getting to the University please visit www.birmingham.ac.uk/maps

By train

Local trains operated by London Midland run from Birmingham New Street to University Station, a short walk from the centre of the campus. Please check train times at www.londonmidland.com

By bus

Local buses run along the Bristol Road and Pritchatts Road. Please check bus timetables at www.nxbus.co.uk



FOOD & DRINK

A number of the cultural attractions on campus, have their own catering outlets, including the tea room at Winterbourne, Costa Coffee shop at The Bramall and refreshments area at The Barber Institute of Fine Arts. There are also other places to eat and drink all across campus. For full information, including opening times, please visit www.birmingham.ac.uk/foodanddrink

Cover images (clockwise from bottom left):

1. Albrecht Dürer *The Rhinoceros* woodcut, Cadbury Research Library.
2. *Gold solidus of Emperor Heraclius and his two sons*, The Barber Institute of Fine Arts.
3. Elisabeth Vigée-Lebrun *A Portrait of Countess Golovine* oil on canvas, The Barber Institute of Fine Arts.
4. *Allosaurus skeleton* cast, The Lapworth Museum of Geology.
5. Eduardo Paolozzi *Faraday*, Campus Collection of Fine and Decorative Art, Research and Cultural Collections.
6. *Twin-headed dance mask*, Danford Collection of West African Art and Artefacts, Research and Cultural Collections.
7. Winterbourne House and Garden.

Design: Antony Antoniou at designbyantony.com



PARKING

Pay and Display

North East Car Park: 52 Pritchatts Road.
Satnav: B15 2SA
North Car Park: Pritchatts Road.

Free Parking

Free parking is available adjacent to the Barber Institute via the East Gate on evenings from 4.30pm onward and at weekends. No permit required.

Winterbourne visitors

Parking is available at Winterbourne House for visitors to the house and garden only.

Blue Badge holders

Parking is available on campus beyond the security barriers.

[birmingham.ac.uk/events](http://www.birmingham.ac.uk/events)
[#uobculture](https://twitter.com/uobculture)