

UNIVERSITY OF
BIRMINGHAM

Postgraduate Open Day

Wednesday 27 November 2013



Stimulating
intellectual
curiosity
since 1900

Aston Webb Building, Edgbaston campus,
Birmingham, B15 2TT

www.birmingham.ac.uk/pgopenday

Supported by



Contents and information

Welcome	3
Postgraduate Study Fair	4
Floorplan of stands	5
General events timetable	6
Subject events timetable	8
Refreshments	18
Road map and travel information	19
Edgbaston campus map	20

Information and enquiries

For information in advance of the Open Day please contact Student Recruitment on 0121 414 5005 or email: pgopenday@contacts.bham.ac.uk

On the day

- Visitors should register at Aston Webb Reception, situated in the Aston Webb Building (R6 on campus map) in front of the Great Hall (Tel: 0121 414 8130)
- Information booths, staffed by student guides, can be found at entrances and in the centre of the campus; programmes, campus maps and information about the day can be obtained here
- Student ambassadors in green shirts are available all day on campus to help visitors find their way around

Special requirements

Please contact Student Recruitment in advance if you have any special requirements. Visitors with disabilities should get in touch so we can provide a mobility map and make suitable parking arrangements for you. Telephone 0121 414 3374 or email: pgopenday@contacts.bham.ac.uk

Emergency

Tel: 0121 414 4444
First aid assistance can be found in the Great Hall, Aston Webb Building

Your visit to the University of Birmingham

Our Postgraduate Open Day gives you the opportunity to talk to experts and find out more about the wide portfolio of taught and research opportunities available to you at Birmingham.

Postgraduate Study Fair (see page 4)

The main focus of the Open Day will be the Postgraduate Study Fair located in the Great Hall, Aston Webb Building (R6). Academic staff from all departments, representatives from the University's support services and current postgraduate students will be available to answer your questions. The event will run from 9.30am to 1.00pm and visitors are welcome to drop in at any time.

General events (see page 6)

A series of talks on topics of general interest to those considering postgraduate study will run throughout the first half of the day. You can also take advantage of one-to-one careers advice sessions in the Great Hall, Aston Webb Building (R6).

Tours (see page 6)

Campus tours will run throughout the day, allowing you to experience our tranquil, picturesque campus at first hand. There will also be opportunities to take a tour of the Main Library and to learn more about the University's holdings.

Subject events (see page 8)

Many academic schools and departments will be offering presentations on the postgraduate study options within their academic area. Many of our schools and departments will also be open to enable you to drop in at times throughout the day to look around and speak to admissions representatives.

Refreshments (see page 18)

The Edgbaston campus has all the amenities of a small town, including numerous shops, bars and cafés at which you can purchase refreshments throughout the Open Day. Free tea and coffee will also be available in the Great Hall of the Aston Webb Building (R6) between 9.30am and 1.00pm.



INVESTOR IN PEOPLE

Welcome

Welcome to our Postgraduate Open Day. The University of Birmingham is one of the most popular universities in the UK for postgraduate study, with over 10,000 postgraduate students from 140 countries around the world.



Our open days are designed to provide you with all the information you need to make an informed choice. Today you will have the opportunity to attend talks about the many taught and research postgraduate opportunities available to you and to have your questions answered by our lecturers and current postgraduate students.

Postgraduate study provides you with an excellent opportunity to develop your knowledge in a specialist area of your choice, to enhance your employability and to stand out from the rest in the eyes of potential employers. When you are choosing a university for postgraduate study you will be looking for one that can offer an outstanding reputation for pioneering research, together with a broad range of courses to suit your particular interests. The University of Birmingham stands at the forefront of cutting-edge research, world expertise and excellence in teaching. The most recent UK Research Assessment Exercise demonstrated that Birmingham's research has international impact and leads the world in a range of disciplines.

At Birmingham we work hard to provide postgraduates with a first-class academic experience. Whether you join us on one of our taught postgraduate programmes or embark on doctoral (PhD) research with us, we value you as part of our academic community and we are constantly striving to develop the services, facilities, and opportunities available to you so as to enable you to achieve your full potential.

My colleagues will be on hand throughout the day to answer your questions. Enjoy your visit to the University of Birmingham.

With best wishes,

Roderick Smith
Director of Admissions

Postgraduate Study Fair

9.30am–1.00pm, Great Hall, Aston Webb Building (R6)

The Study Fair offers you a fantastic opportunity to talk to representatives from all of the University's colleges. Academic staff, including postgraduate admissions tutors, and current postgraduates will be available to answer your questions and to offer you advice on all aspects of postgraduate study. The Study Fair also includes representatives from the University's service departments.



The following academic and service departments will be exhibiting at the Postgraduate Study Fair:

College of Arts and Law

- African Studies and Anthropology
- American and Canadian Studies
- Art History, Film and Visual Studies
- Classics, Ancient History, Archaeology and the Ironbridge International Institute for Cultural Heritage
- Drama and Theatre Arts
- English Language
- English Literature
- History
- Law
- Modern Languages
- Music
- Philosophy
- Theology and Religion
- College of Arts and Law Graduate School

College of Engineering and Physical Sciences

- Chemical Engineering (including Food Safety)
- Chemistry
- Civil Engineering
- Computer Science

- Electronic, Electrical and Computer Engineering
- Mathematics
- Mechanical Engineering
- Metallurgy and Materials
- Physics and Astronomy

College of Life and Environmental Sciences

- Biosciences
- Geography, Earth and Environmental Sciences
- Psychology
- Sport, Exercise and Rehabilitation Sciences

College of Medical and Dental Sciences

- Cancer Sciences
- Clinical and Experimental Medicine
- Dentistry
- Health and Population Sciences
- Immunity and Infection

College of Social Sciences

- Business
- Economics
- Education
- Government and Society, including:

- Political Science, International Studies and Sociology (POLSIS)
- Institute for Conflict, Cooperation and Security
- Institute of Local Government Studies
- International Development (IDD)
- Russian and East European Studies (CREES)
- Social Policy and Social Work

Support services

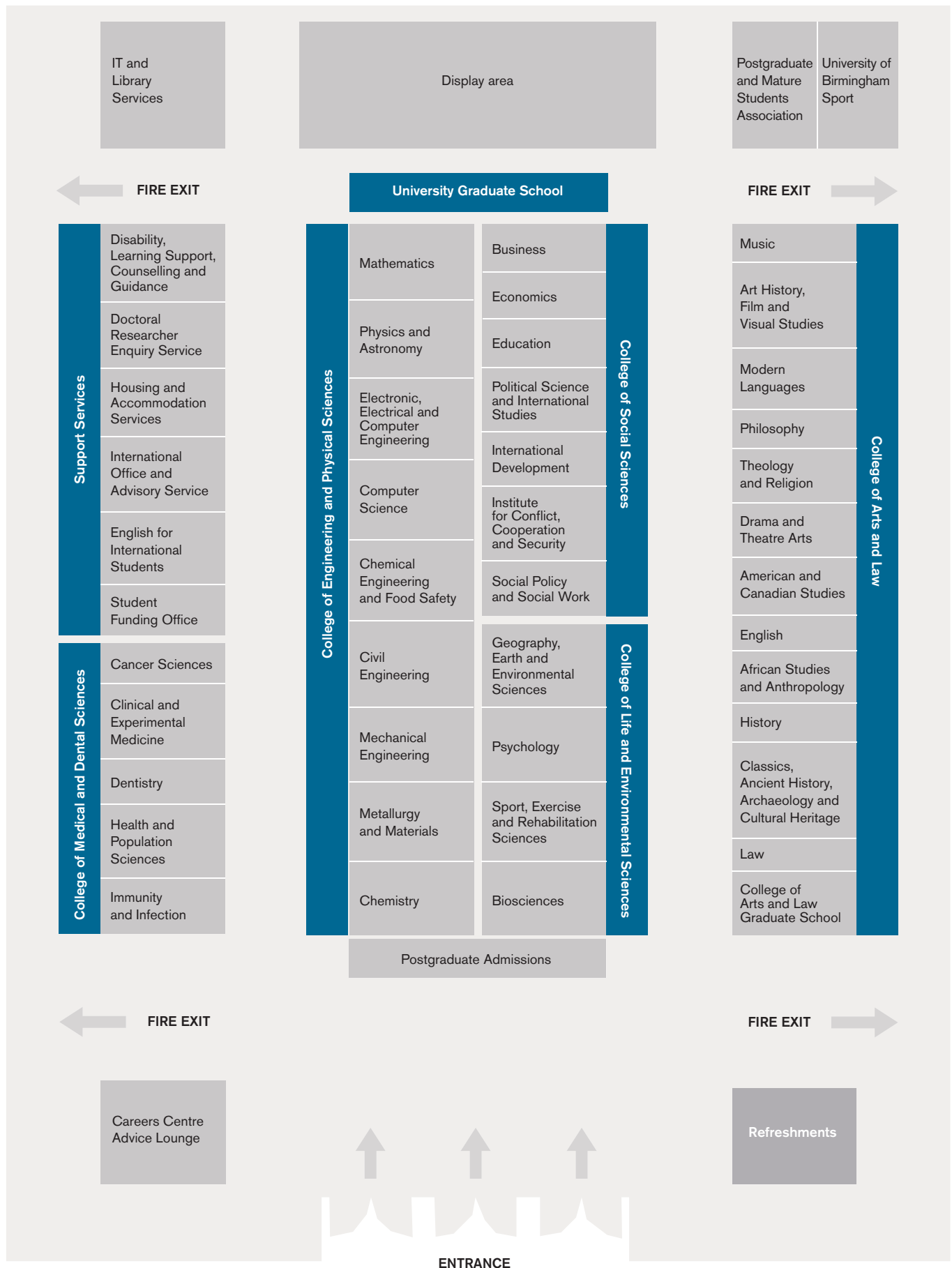
- Careers Centre
- Disability, Learning Support, Counselling and Guidance
- Doctoral Researcher Enquiry Service
- English for International Students
- Housing and Accommodation Services
- International Office and Advisory Service
- IT Services
- Library Services
- Postgraduate Admissions
- Postgraduate and Mature Students Association
- Student Funding Office
- University Graduate School
- University of Birmingham Sport

Sponsors

Graduate Prospects



Floorplan



General events

The general events have been designed to give you the information you need to make an informed choice about postgraduate study at the University of Birmingham. If you need any help with directions, one of our postgraduate ambassadors – identifiable by their bright green tops – will be happy to guide you.

Central events timetable

Time	Session	Speaker	Room
9.30am–1.00pm	Registration and Postgraduate Study Fair	School representatives	Great Hall, Aston Webb Building (R6)
9.30am–1.00pm	Careers Centre Advice Lounge	Various careers advisors	Great Hall, Aston Webb Building (R6)
9.30am–1.00pm	Doctoral Researcher Enquiry Service	Postgraduate mentors	Great Hall, Aston Webb Building (R6)

Central talks timetable

Time	Talk	Speaker	Room
11.00–11.15am	Welcome and Introduction to Postgraduate Study	Professor Rob MacKenzie, Professor of Atmospheric Science	The Elgar Concert Hall, Bramall Music Building (R12)
11.20–11.50am	Funding Postgraduate Study at the University of Birmingham	Paul Carpenter, Student Funding Officer, and Pete Mandeville, University Graduate School	The Elgar Concert Hall, Bramall Music Building (R12)
11.55am–12.25pm	Applying for Postgraduate Study	Nicholas Ranford, Admissions Officer	The Elgar Concert Hall, Bramall Music Building (R12)
12.30–1.00pm	Alternative Funding Options	Dr Luke Blaxill, author of <i>The Alternative Guide to Postgraduate Funding</i>	The Elgar Concert Hall, Bramall Music Building (R12)

Just ask one of our student ambassadors if you need any help with directions.

Tours timetable

Time	Tour	Departing from
10.30am–11.30am	Edgbaston campus tour	Campus tours stand, Reception, Aston Webb Building (R6)
11.30am–12.30pm	Edgbaston campus tour	Campus tours stand, Reception, Aston Webb Building (R6)
12.30–1.30pm	Edgbaston campus tour	Campus tours stand, Reception, Aston Webb Building (R6)
1.30–2.30pm	Edgbaston campus tour	Campus tours stand, Reception, Aston Webb Building (R6)
2.00–2.30pm	Main Library tour	The i-Lounge, Main Library (R22)
2.30–3.30pm	Edgbaston campus tour	Campus tours stand, Reception, Aston Webb Building (R6)
3.00–3.30pm	Main Library tour	The i-Lounge, Main Library (R22)
3.30–4.30pm	Edgbaston campus tour	Campus tours stand, Reception, Aston Webb Building (R6)



Café PhD

Are you interested in undertaking doctoral research at the University of Birmingham?
Do you want to meet current postgraduates working in your field?
Would you like to find out more about what it is like to be a postgraduate at Birmingham?

If you answered yes to one or more of the above, then Café PhD is for you. Café PhD is a social gathering, a research forum and a discussion session rolled into one.

Ultimately, Café PhD is an informal social event designed to showcase and discuss some of the exciting doctoral research being done at Birmingham, as well as offering the chance to find out more about life as a postgraduate student.

At the Postgraduate Open Day, we will be running a series of mini Café PhD events – one per college – offering you the chance to:

- Hear current PhD candidates introduce key issues from their research
- Discuss and debate any issues raised in a relaxed and social atmosphere
- Ask questions about all aspects of starting a postgraduate degree and the postgraduate experience

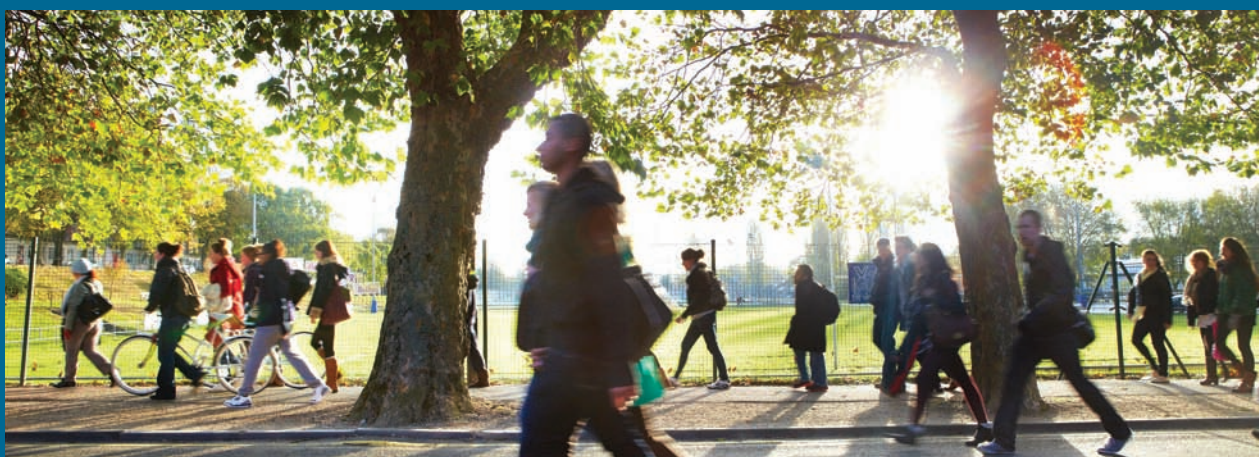
Come along for the whole session, or drop in whenever you can. For more information, email: h.prescott@bham.ac.uk Look out for details of the Café PhD mini event for your area of interest in the subject event listings.

Learn more

Visit the Café PhD website:

www.birmingham.ac.uk/cafephdpd

To learn more about postgraduate study at Birmingham contact our Enquiry Service for one-to-one advice and guidance: dr@contacts.bham.ac.uk



Subject events timetable

College of Arts and Law

This College offers postgraduate students the opportunity to join a vibrant, international community that allows research to flourish. Home to world-renowned research centres and famed for its internationally recognised teaching and research output, Arts and Law at Birmingham is engaged in exciting initiatives in new fields of study. The College consists of the following schools: Birmingham Law School; English, Drama and American & Canadian Studies; History and Cultures; Languages, Cultures, Art History and Music; and Philosophy, Theology and Religion. We also have a College of Arts and Law Graduate School for all of our postgraduate students.

Academic School	Time	Event	Location
College of Arts and Law (CAL) Graduate School	1.00–1.30pm	Arts and Humanities Research Council (AHRC) funding opportunities for 2014	Lecture Room 5 (Room 219), Arts Building (R16)
	3.00–4.00pm	Drop-in session – CAL Postgraduate Research Poster event showcasing research funding awarded to current students. Come along to meet some of our current researchers and find out more about their College-funded research development	Lecture Room 5 (Room 219), Arts Building (R16)
	4.00–5.00pm	Café PhD – an opportunity to meet current postgraduate research students, to hear about their work and their experiences of postgraduate life, and to ask questions in a relaxed and informal setting. Refreshments will be provided	Senior Common Room (SCR), First Floor, Arts Building (R16)
	4.00–5.00pm	Applying for postgraduate funding from the Economic and Social Research Council (ESRC)	Main Lecture Theatre (Room 120), Arts Building (R16)
Birmingham Law School	1.00–1.30pm	Tour of Law facilities	Reception, Law Building (R1)
	1.30–2.00pm	Refreshments and informal chat with tutors	Law Senior Common Room, Second Floor, Law Building (R1)
	2.00–2.45pm	Introduction to LLM programmes	Room G5, Law Building (R1)
	2.00–2.45pm	Introduction to Law postgraduate research programmes	Room G16, Law Building (R1)
	2.00–2.45pm	Introduction to the LLB for Graduates programme	Room 111, Law Building (R1)
English, Drama, and American & Canadian Studies	1.00–2.00pm	Drop-in session for Creative Writing – Dr Luke Kennard	Room 106, Arts Building (R16)
	1.00–3.00pm	Drop-in session for postgraduate research in English Language and Applied Linguistics – Dr Nicholas Groom	Room G32, JG Smith Building (R20)
	1.00–3.00pm	Drop-in session for postgraduate research in English Literature – Dr Rex Ferguson	Room 113, Arts Building (R16)
	2.00–3.00pm	Introduction to taught postgraduate programmes in English Language and Applied Linguistics	Lecture Room 8 (Room 301), Arts Building (R16)
	2.00–3.00pm	Introduction to taught postgraduate programmes in English Literature	Lecture Room 5 (Room 219), Arts Building (R16)
	2.00–4.00pm	Drop-in session for Drama and Theatre Arts – Dr Vicky Angelaki	Room F30, SOVAC Building, Selly Oak campus*
	2.00–4.00pm	Drop-in session for MRes Playwriting – Fraser Grace	Room F08, SOVAC Building, Selly Oak campus*
	3.00–4.00pm	Introduction to postgraduate programmes in Film: MA Literature and Film; MA Film and Television; MRes Film Studies	Lecture Room 8 (Room 301), Arts Building (R16)

*Transport to Selly Oak campus for Drama and Theatre Arts and Playwriting

Outward journeys (Edgbaston to Selly Oak) – leaving from outside the main doors to the Aston Webb Building at: 1.45pm, 2.30pm, and 3.15pm
Return journeys (Selly Oak to Edgbaston) – leaving from outside the SOVAC Building at: 2.15pm, 3.00pm, and 4.00pm

College of Arts and Law

Continued

Academic School	Time	Event	Location
History and Cultures	1.00–1.30pm	Introduction to taught postgraduate programmes in the Department of African Studies and Anthropology	Danford Room (Room 224), Arts Building (R16)
	1.00–2.00pm	Introduction to taught postgraduate programmes in the Department of History	Room 201, Arts Building (R16)
	1.30–2.30pm	Introduction to postgraduate research in the School of History and Cultures	Room 250, Arts Building (R16)
	1.30–4.00pm	Introduction to postgraduate programmes with the Ironbridge International Institute for Cultural Heritage – refreshments will be provided	Room G51, European Research Institute (G3)
	2.00–4.00pm	Introduction to taught postgraduate programmes in the Department of Classics, Ancient History and Archaeology – refreshments will be provided	CAHA Museum (Room 305), Arts Building (R16)
Languages, Cultures, Art History and Music	1.00–2.00pm	Introduction to postgraduate programmes in Music	Lecture Theatre, The Barber Institute (R14)
	1.00–2.00pm	Drop in session for French Studies – Dr Stephen Forcer	Room 306, Ashley Building (R17)
	1.00–2.00pm	Drop-in session for German Studies and Translation Studies – Dr Hilary Brown	Room 215, Ashley Building (R17)
	1.00–2.30pm	Drop-in session for History of Art – Dr Camilla Smith	Room 403, Arts Building (R16)
	1.00–3.00pm	Drop-in session for Arabic – Dr Anissa Daoudi	Room G12, Ashley Building (R17)
	2.00–3.00pm	Drop-in session for Hispanic Studies – Dr Aengus Ward	Room 115, Ashley Building (R17)
	2.00–3.00pm	Drop-in session for Sexuality and Gender Studies – Professor Lisa Downing	Room 307, Ashley Building (R17)
	2.00–4.00pm	Drop-in session for Italian Studies – Dr Paolo De Ventura	Room 313, Ashley Building (R17)
	2.30–3.30pm	Drop-in session for Russian Studies – Dr Natasha Rulyova	Room 317, Ashley Building (R17)
	3.00–4.00pm	Drop-in session for MA Holocaust and Genocide – Dr Joanne Sayner	Room 214, Ashley Building (R17)
Philosophy, Theology and Religion	1.00–1.20pm	Introduction to postgraduate programmes in Philosophy	Room G51, European Research Institute (G3)
	1.30–1.50pm	Introduction to postgraduate programmes in Theology and Religion	Room G51, European Research Institute (G3)
	1.30–2.30pm	Drop-in session for Jewish and Holocaust Studies – Dr Isabel Wollaston	Room 249, European Research Institute (G3)
	1.30–2.30pm	Drop-in session for Metaphysics and Philosophy and Science – Dr Nikk Effingham	Room 160, European Research Institute (G3)
	1.30–2.30pm	Drop-in session for Pentecostal Studies – Dr Andrew Davies	Room 255, European Research Institute (G3)
	1.30–4.00pm	Drop-in session for Moral Philosophy – Dr Jussi Suikkanen	Room 152, European Research Institute (G3)
	2.00–3.00pm	Drop-in session for Islamic Studies – Dr Haifaa Jawad	Room 213, European Research Institute (G3)
	2.00–3.00pm	Drop-in session for Philosophy of Mind and Epistemology – Dr Darragh Byrne	Room 153, European Research Institute (G3)
	2.00–3.30pm	Drop-in session for Biblical Studies – Dr Deryn Guest	Room 210, European Research Institute (G3)
	2.00–4.00pm	Drop-in session for Sikh Studies – Dr Jagbir Jhutti-Johal	Room 248, European Research Institute (G3)
	3.00–4.00pm	Drop-in session for Islamic Studies – Dr Mustafa Draper	Room 211, European Research Institute (G3)
	3.00–4.00pm	Drop-in session for Philosophy of Mind and Action and Moral Philosophy – Dr Mark Walker	Room 156, European Research Institute (G3)

APPLY NOW

Arts and Humanities Research Council (AHRC) Funding



The University of Birmingham College of Arts and Law is delighted to announce a range of AHRC-funded studentships for September 2014, through its involvement in the Midlands3Cities Doctoral Training Partnership.

We are inviting applications from UK/EU students whose research interests include:

- Archaeology
- Classics and Ancient History
- Creative Writing
- Cultural and Museum Studies
- Drama and Theatre Studies
- English Language and Literature
- Film Studies
- History
- History of Art
- Modern Languages
- Music
- Law
- Linguistics
- Philosophy
- Sexuality and Gender Studies
- Theology and Religious Studies

Please note: these awards are normally only available to UK and EU students

Closing date: **9 January 2014**

www.birmingham.ac.uk/ahrc-funding

Find out more about AHRC funding at the University of Birmingham

Open funding talk

Wednesday 27 November 2013
1.00–1.30pm
Lecture Room 5, Arts Building

Dr Diana Spencer, Director of the College of Arts and Law Graduate School, will give a presentation on AHRC funding as part of the University's Postgraduate Open Day.

Workshop: Perfecting your PhD application

Saturday 7 December 2013
9.30am–3.30pm

This workshop will show you how to make the most compelling case for your research in order to maximise your chances of being considered for research funding. Places are limited and booking is essential. Visit:

www.birmingham.ac.uk/ahrc-funding

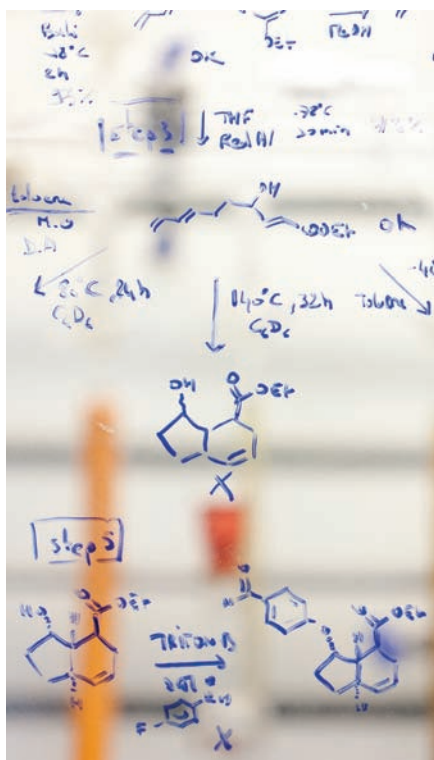


Arts & Humanities
Research Council

College of Engineering and Physical Sciences

Engineering and Physical Sciences covers a broad range of world-leading research, from developing microengines to particle physics research at CERN. The College plays a significant role in creating new knowledge, training new generations of engineers and scientists, and interfacing with industry. It consists of the following schools: Chemical Engineering; Chemistry; Civil Engineering; Computer Science; Electronic, Electrical and Computer Engineering; Mathematics; Mechanical Engineering; Metallurgy and Materials; and Physics and Astronomy.

Academic School	Time	Event	Location
Graduate School	3.00–4.00pm	Café PhD – an opportunity to meet current postgraduate research students, to hear about their work and their experiences of postgraduate life, and to ask questions in a relaxed and informal setting. Refreshments will be provided	Atrium, Chemical Engineering Building (Y11)
Chemical Engineering	2.00–3.00pm	Drop-in session for all postgraduate programmes in the School – Professor Neil Rowson	Atrium, Chemical Engineering Building (Y11)
Chemistry	1.30–2.00pm	Introduction to postgraduate study – Dr Joseph Hriljac, Director of the Postgraduate Admissions in the School of Chemistry	Room 101, Haworth Building (Y2)
Civil Engineering	12.30–1.00pm	Postgraduate opportunities within the School of Civil Engineering	Room F32, Civil and Mechanical Engineering Building (Y3)
	2.00–6.00pm	Drop-in session for all MSc Civil Engineering programmes	Room G45, Civil and Mechanical Engineering Building (Y3)
Computer Science	1.00–1.30pm	Why Human Computer Interaction (HCI) matters more than ever – an introduction to our MSc in HCI and opportunities for PhD research – Professor Russell Beale	Room UG09, Learning Centre (R28)
	1.30–2.00pm	Introduction to our research programmes – Professor Andrew Howes	Room UG09, Learning Centre (R28)
	3.00–3.30pm	Introduction to our MSc programmes – Professor Jeremy Wyatt	Room UG09, Learning Centre (R28)
Electronic, Electrical and Computer Engineering	11.00–11.30am	Introduction to our MSc Programmes	Room N123, Gisbert Kapp Building (G8)
	1.00–1.30pm	Introduction to our MSc Programmes	Room NG15, Gisbert Kapp Building (G8)
	1.00–3.00pm	Opportunities to talk to course convenors and to take a tour of the facilities	Reception, Gisbert Kapp Building (G8)
Mathematics	1.00–2.00 pm	Introduction to postgraduate opportunities in Mathematics and Statistics	Maths Learning Centre, Watson Building (R15)
Mechanical Engineering	2.00–3.00pm	Drop-in session for our postgraduate programmes – Dr Raya Al-Dadah, Dr Mozafar Saadat and Dr Andrew Tobias	Room F32, Civil and Mechanical Engineering Building (Y3)



College of Life and Environmental Sciences

Dedicated to exploring and learning about the diversity and evolutionary challenges of life in all its forms, Life and Environmental Sciences enjoys an internationally recognised strength in teaching and research. The College uses training, fieldwork and excellent facilities to enable students to learn generic and discipline-specific skills while studying exciting topics – ranging from ecology through to cancer research and forensic psychology. It consists of the following four schools: Biosciences; Geography, Earth and Environmental Sciences; Psychology; and Sport, Exercise and Rehabilitation Sciences.

Academic School	Time	Event	Location
Graduate School	2.00–3.00pm	Postgraduate careers – advice session for students currently in Life and Environmental Sciences	Room G26, Mechanical and Civil Engineering Building (Y3)
	3.30–4.30pm	Café PhD – an opportunity to meet current postgraduate students, to hear about their work and their experiences of postgraduate life, and to ask questions in a relaxed and informal setting. Refreshments will be provided	Common Room (Room WG4), Biosciences Building (R27)
Biosciences	11.00am–1.00pm	Refreshments available and the opportunity to meet students	The Undercroft, Biosciences Building (R27)
		Tours of the facilities lead by current postgraduate students	The Undercroft, Biosciences Building (R27)
	1.00–1.10pm	Welcome and introduction to Masters courses in the School of Biosciences – Dr Julia Lodge	Room NG08, Biosciences Building (R27)
	1.10–1.20pm	Introduction to MRes Molecular and Cellular Biology – Dr Peter Winn	Room NG08, Biosciences Building (R27)
	1.20–1.30pm	Introduction to MSc Microbiology and Infection – Dr Apoorva Bhatt	Room NG08, Biosciences Building (R27)
	1.30–1.40pm	Introduction to MRes and MSc Toxicology – Dr Nikolas Hodges	Room NG08, Biosciences Building (R27)
	1.40–1.50pm	Introduction to PhD opportunities in the School of Biosciences – Dr Neil Hotchin, Director of the Biosciences Graduate Research School	Room NG08, Biosciences Building (R27)
	1.50–2.00pm	Introduction to MSc Molecular Biotechnology – Dr Julia Lodge	Room NG08, Biosciences Building (R27)
	2.00–3.00pm	Refreshments and informal question and answer session with course tutors and current students	The Undercroft, Biosciences Building (R27)
Geography, Earth and Environmental Sciences	11.00am–1.00pm	Refreshments and opportunity to meet with current students	The Undercroft, Biosciences Building (R27)
		Tours of the facilities lead by current postgraduate students	The Undercroft, Biosciences Building (R27)
	1.00–1.10pm	Welcome talk – Dr Peter Lee	The Dome Laboratory, Earth Sciences, Aston Webb Building, A Block (R4)
	1.10–1.20pm	Introduction to PhD opportunities in the School – Dr James Bendle	The Dome Laboratory, Earth Sciences, Aston Webb Building, A Block (R4)
	1.20–1.30pm	Introduction to Environmental Health and Atmospheric Science taught postgraduate courses (including MSc courses in Public and Environmental Health, Environmental Health, Science of Occupational Health, Safety and the Environment, Air Pollution Management and Control; and the MRes in Human and Environmental Impacts of Nanoscience and Nanotechnology)	The Dome Laboratory, Earth Sciences, Aston Webb Building, A Block (R4)
	1.30–1.40pm	Introduction to MSc Urban and Regional Planning – Dr Mike Beazley	The Dome Laboratory, Earth Sciences, Aston Webb Building, A Block (R4)
	1.40–1.50pm	Introduction to MSc Applied Meteorology and Climatology – Dr Martin Widmann	The Dome Laboratory, Earth Sciences, Aston Webb Building, A Block (R4)
	1.50–2.00pm	Introduction to MSc Hydrogeology – Professor John Tellam	The Dome Laboratory, Earth Sciences, Aston Webb Building, A Block (R4)
	2.00–2.10pm	Introduction to MSc Applied and Petroleum Micropalaeontology – Dr Ian Boomer	The Dome Laboratory, Earth Sciences, Aston Webb Building, A Block (R4)
	2.10–2.20pm	Introduction to MSc Nuclear Decommissioning and Waste Management – Dr Jo Renshaw	The Dome Laboratory, Earth Sciences, Aston Webb Building, A Block (R4)
	2.20–2.30pm	Introduction to MSc River Environments and Their Management – Professor Alexander Milner	The Dome Laboratory, Earth Sciences, Aston Webb Building, A Block (R4)
	2.30–3.30pm	Refreshments and informal question and answer session with course tutors and current students	Lapworth Museum, Earth Sciences, Aston Webb Building, A Block (R4)

College of Life and Environmental Sciences

Continued

Academic School	Time	Event	Location
Psychology	11.00am–1.00pm	Refreshments and tours of research laboratories	Reception, Hills Building (R3)
	1.00–1.15pm	Introduction to PhD programmes and a question and answer session – Dr Linda Wheeldon	Room 1.20, Hills Building (R3)
	1.15–1.30pm	Introduction to MSc programmes and a question and answer session – Professor Jane Raymond	Room 1.20, Hills Building (R3)
	1.30–1.45pm	Introduction to Forensic Psychology (research and taught programmes) and a question and answer session – Steven Gillespie	Room 1.20, Hills Building (R3)
	1.45–2.15pm	Introduction to Clinical Psychology programmes and a question and answer session – Dr Theresa Powell	Room 1.20, Hills Building (R3)
	2.30–3.30pm	Refreshments and informal question and answer session with course tutors and current students	Reception, Hills Building (R3)
Sport, Exercise and Rehabilitation Sciences	11.00am–1.00pm	Refreshments with current postgraduate students	Atrium, Sport and Exercise Sciences Building (Y14)
		Tours of the research laboratories and postgraduate study areas led by current postgraduate students	Meet in the atrium of the Sport and Exercise Sciences Building (Y14)
	1.00–1.15pm	Introduction to MSc and MRes Sport and Exercise Sciences programmes – Dr Matt Bridge	Lecture Theatre 1, Sport and Exercise Sciences Building (Y14)
	1.15–1.30pm	Introduction to MSc Physiotherapy (pre-registration) – Gill Eveleigh	Lecture Theatre 1, Sport and Exercise Sciences Building (Y14)
	1.30–1.45pm	Introduction to PhD opportunities in the School – Dr Jet Veldhuijzen van Zanten	Lecture Theatre 1, Sport and Exercise Sciences Building (Y14)
	2.00–3.00pm	Refreshments and informal question and answer session with course tutors and current students	Atrium, Sport and Exercise Sciences Building (Y14)

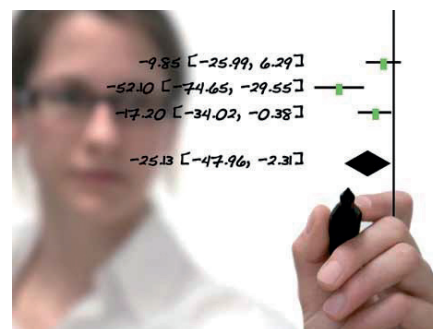


College of Medical and Dental Sciences

The College of Medical and Dental Sciences is a major international centre for research and education in medicine, medical sciences, dentistry, nursing and physiotherapy. Bringing together healthcare-related research and education, the College consists of the following five schools:

Cancer Sciences; Clinical and Experimental Medicine; Dentistry; Health and Population Sciences; and Immunity and Infection.

Academic programme	Time	Event	Location
Graduate Entry Medicine (GEC) – 4-year MBChB programme	2.15–2.30pm	Introduction to the GEC with tea, coffee and cake	Meet at reception, Medical School (B1)
	2.30–3.15pm	GEC programme overview	
	3.15–3.45pm	Meet the GEC students and tour of the GEC rooms	
PhD programmes	12.30–1.00pm	Buffet lunch	Meet at reception, Medical School (B1)
	1.00–2.00pm	Welcome talk and overview of PhD programmes in the College, including an opportunity to meet current postgraduate research students, to hear about their work and their experiences of postgraduate life, and to ask questions in a relaxed and informal setting	
Masters courses drop-in sessions – an opportunity to talk to the programme leads directly	9.00am–4.00pm	MRes Biomedical Research (Integrative and Translational) – Kevin Whitehead/Andrew Coney	Go to Medical School Reception (B1)
	9.30am–1.00pm	MSc Musculoskeletal Ageing – Professor Janet Lord	College of Medical and Dental Sciences stand, Great Hall, Aston Webb Building (R6)
	10.00–11.00am	MRes Health Research – Dr Nikolaos Efstathiou	College of Medical and Dental Sciences stand, Great Hall, Aston Webb Building (R6)
	11.00am–12.00noon	MSc Translational Medicine: Interdisciplinary Biomedical Technology – Dr Peter Searle	College of Medical and Dental Sciences stand, Great Hall, Aston Webb Building (R6)
	12.00noon–4.00pm	MSc Occupational Health – Dr Steven Sadhra	Ask at Reception, Institute of Occupational and Environmental Medicine (Y16)
	12.00noon–4.00pm	MSc Pharmaceutical Enterprise – Nicolas Barnes	Go to Medical School Reception (B1)
	12.30–4.00pm	MSc Diabetes and Obesity – Dr Jeremy Tomlinson	
	1.00–3.00pm	MSc Forensic Mental Health – Dr Sharon Riordan	
	1.00–4.00pm	MSc Immunology and Immunotherapy – Dr John Curnow	
	1.00–4.00pm	MRes Health Research – Dr Nikolaos Efstathiou	Ask at second-floor reception, 52 Pritchatts Road (G9)
	1.00–5.00pm	MSc Trauma Science – Dr Zubair Ahmed	Go to Medical School Reception (B1)
	2.00–4.00pm	MSc Health Economics and Health Policy – Dr Pelham Barton	Ask at Reception, Institute of Occupational and Environmental Medicine (Y16)
	1.00–4.00pm	MRes Cancer Sciences – Dr Roger Watson	Go to Medical School Reception (B1)
	2.00–4.00pm	MSc Translational Medicine: Interdisciplinary Biomedical Technology – Dr Peter Searle	
	2.00–5.00pm	MSc Clinical Neuropsychiatry – Dr Hugh Rickards	Please go to Reception at the Barberry National Centre for Mental Health
	3.00–5.00pm	Masters in Public Health MPH (Health Technology Assessment) MPH (Statement of Extra Accredited Learning) MPH (International) – Dr Annette Wood	Ask at Reception, Institute of Occupational and Environmental Medicine (Y16)
PGDip Physician Associate (PA) Studies	9.00–11.00am	Meet Phil Begg to talk about the programme	College of Medical and Dental Sciences stand, Great Hall, Aston Webb Building (R6)
	9.00am–1.00pm	Meet a working PA who will be able to talk to you about the profession	



Postgraduate Mentor Scheme



THE UNIVERSITY OF BIRMINGHAM'S POSTGRADUATE MENTOR SCHEME IS A STUDENT-TO-STUDENT SUPPORT NETWORK FOR PROSPECTIVE POSTGRADUATES.

THE MENTORS ARE EXPERIENCED POSTGRADUATES WHO CURRENTLY STUDY HERE AT THE UNIVERSITY OF BIRMINGHAM. THEY WILL BE ABLE TO OFFER HELP AND SUPPORT FROM A STUDENT PERSPECTIVE.

You do not need to have already applied to the University to take advantage of this scheme – it is open to enquirers, applicants and offer holders.

You can find out more about the scheme, browse mentor profiles and access mentor contact details at:

[www.birmingham.ac.uk/
pg-mentor](http://www.birmingham.ac.uk/pg-mentor)

College of Social Sciences

Generating new knowledge about society and transferring this in ways that improve wellbeing is central to all the work undertaken in this research-led college. Social Sciences brings together over 400 academics (including almost 100 professors) and around 200 administrative staff across a range of disciplinary and interdisciplinary fields. The College consists of the following four schools: Birmingham Business School; Education; Government and Society; and Social Policy.

Academic School	Time	Talk	Location
Graduate School	4.00–5.00pm	Applying for postgraduate funding from the Economic and Social Research Council (ESRC)	Main Lecture Theatre (Room 120), Arts Building (R16)
	3.00–4.00pm	Café PhD – an opportunity to meet current postgraduate students, to hear about their work and their experiences of postgraduate life, and to ask questions in a relaxed and informal setting. Refreshments will be provided	Room 718, Seventh Floor, Muirhead Tower (R21)
Birmingham Business School	1.00–3.00pm	Drop-in session for taught MSc and MBA programmes offering an opportunity to meet with programme directors, academics, current students, Careers in Business and Alumni Relations	Room 110, University House (O3)
	2.00–2.30pm	Introduction to doctoral research (PhD) opportunities in the School – Professor Helen Rainbird	Tenth Floor East, PGR Study Room, Muirhead Tower (R21)
School of Education	1.00–2.00pm	Drop-in session for Initial Teacher Training (Primary, Secondary) – Martine Delbaue and Dr Susannah Smith	Room 422, Education Building (R19)
	2.00–3.00pm	Drop-in session for Applied Educational and Child Psychology Doctorate – Beverley Burke	Room G63, Education Building (R19)
	2.00–3.00pm	Drop-in session for research programmes (PhD, MRes, MA by Research and EdD) in the School – Helen Joinson	Room G10, Education Building (R19)
Political Science and International Studies	1.00–2.00pm	Introduction to postgraduate study in the Department of Political Science and International Studies	Room 429, Fourth Floor, Muirhead Tower (R21)
International Development	1.00–2.00pm	Introduction to studying International Development at postgraduate level	Room 427, Fourth Floor, Muirhead Tower (R21)
Institute for Conflict, Cooperation and Security	2.00–3.00pm	Introduction to studying the Global Cooperation and Security MSc	Room 429, Fourth Floor, Muirhead Tower (R21)
Institute of Local Government Studies	9.30am–4.00pm	Drop-in session for all postgraduate programmes in the Department	Ask at Reception, Ninth floor, Muirhead Tower (R21)
Social Policy	1.00–2.00pm	Introduction to studying Social Policy at Birmingham	Room WG5, Aston Webb Building, A Block (R4)
Social Work	1.00–2.00pm	Introduction to Social Work at Birmingham	Room 714/5, Seventh Floor, Muirhead Tower (R21)



Creating tomorrow's leading social scientists

Twenty-two postgraduate scholarships are available in the University of Birmingham Economic and Social Research Council (ESRC) Doctoral Training Centre.

The Birmingham Doctoral Training Centre is one of only 21 across the UK to be accredited by the ESRC. It has been awarded 22 scholarships to fund doctoral research starting in 2014 in the following subject areas:

- Applied Linguistics
- Russian and East European Studies
- International Development
- West African Studies
- German Studies
- Business and Management
- Finance
- Economic and Social History
- Economics and Econometrics
- Education
- Urban and Regional Studies
- Human Geography
- Political Science and International Studies
- European Studies
- Local Government Studies and Public Policy
- Psychology
- Sport and Exercise Science (Psy)
- Social Policy
- Social Work
- Socio-Legal Studies

Learn more

An ESRC funding talk will take place as part of the Postgraduate Open Day at 4.00pm in the Main Lecture Theatre (Room 120), Arts Building (R16).

For further information and personalised advice please contact the Doctoral Researcher Enquiry Service: dr@contacts.bham.ac.uk

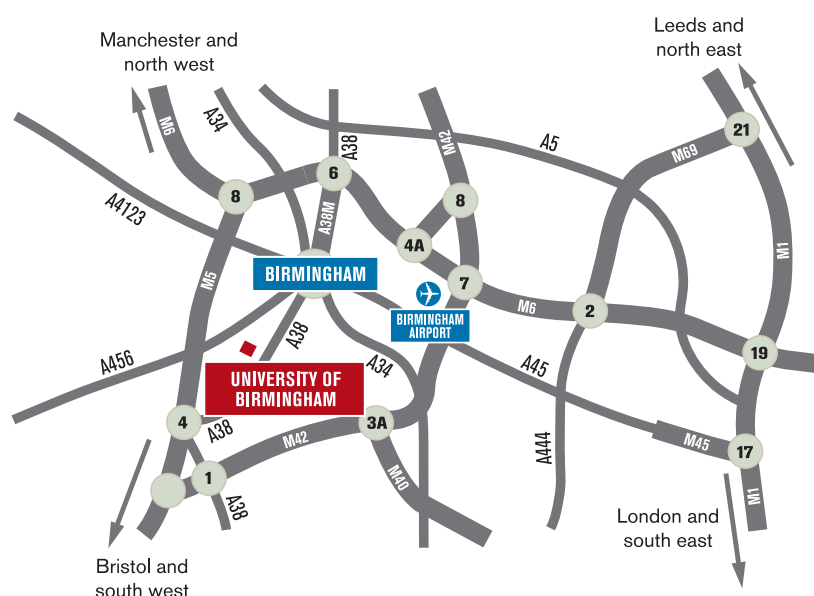


Refreshments

Location (map numbers in brackets)	Facilities	Opening times
Bramall Music Building (R12)	Costa Bramall: Costa hot and cold beverages, cakes and light snacks	8.00am–5.00pm
Poynting Physics Building (R13)	Go Coffee Shop: Homemade cakes, soup, pre-packed sandwiches and speciality drinks	9.00am–3.30pm
Arts Building (R16)	Cyber Go: Homemade cakes, pre-packed sandwiches and speciality drinks	9.00am–3.30pm
Education Building (R19)	Skool Café: Homemade cakes, soup, pre-packed sandwiches and speciality drinks	8.30am–3.00pm
Muirhead Tower (R21)	Starbucks: Starbucks tea and coffee, snacks and light lunches	8.00am–7.00pm
Main Library (R22)	iLounge Coffee Shop: Homemade cakes, panini, pre-packed sandwiches and speciality drinks	9.00am–8.00pm
University Centre (R23)	Café Go: Jacket potatoes, handmade sandwiches, salads, panini, soup and speciality drinks	8.00am–5.30pm
	Costa: Speciality coffee and pre-packed sandwiches, panini and cakes	8.00am–8.00pm
	Go Central: Breakfast, Asian, Italian and British cuisine	8.00am–4.00pm
	Go Mex: Mexican burrito bar	10.30am–4.30pm
Staff House (R24)	Ground Floor – Bratby Bar: Hot and cold food, alcoholic beverages and soft drinks	12.00noon–2.30pm
	First Floor – Café Aroma: Hot and cold beverages, sandwiches, cakes and panini	8.00am–4.00pm
	Second Floor – Noble Room: Traditional carvery lunch, salads, soups and other hot food	12.00noon–2.00pm
Munrow Sports Centre (R25)	Raising The Bar: Starbucks tea and coffee, snacks and light lunches	8.30am–2.30pm
Biosciences (R27)	Go: Homemade cakes, jacket potatoes, soup, panini, pre-packed sandwiches and speciality drinks	10.00am–3.00pm
Learning Centre (R28)	Go2: Homemade cakes, soup, panini, pre-packed sandwiches and speciality drinks	8.00am–5.00pm
Guild of Students (O1)	Costa: Speciality coffee and pre-packed sandwiches, panini and cakes	8.30am–3.30pm
	Subway: A range of sandwich fillings, salads, crisps, and freshly baked cookies and muffins	10.00am–4.00pm
University House (O3)	Business School Lounge: Jacket potatoes, panini, soup, small selection of hot meals, packaged sandwiches, soup and speciality drinks	8.30am–4.30pm
Civil and Mechanical Engineering (Y3)	Go Coffee Shop: Homemade cakes, soup, pre-packed sandwiches and speciality drinks	9.00am–3.30pm
Chemical Engineering (Y11)	Go Coffee Shop: Homemade cakes, panini, pre-packed sandwiches and speciality drinks	10.00am–3.00pm
Medical School (B1)	Food Court: Breakfast, handmade sandwiches, salads, 'Phat pasty counter', snacks and speciality drinks	8.00am–5.00pm
52 Pritchatts Road (G9)	Gisbert Kapp Cafe: Jacket potatoes, handmade sandwiches, salads, panini, soup and speciality drinks	8.00am–6.00pm
Selly Oak campus: Orchard Learning Centre	Go: Homemade cakes, jacket potatoes, soup, panini, pre-packed sandwiches and speciality drinks	9.30am–2.30pm



Road map and travel information



Local travel and parking

Open days are a very busy time for the University and as such we are only able to offer a limited number of parking spaces on these days. For your convenience, we would strongly recommend using public transport to reach us.

The University of Birmingham is fortunate enough to have its own railway station, 'University'. The centre of the main campus is just a five-minute walk from University station.

- A limited amount of car parking spaces are available for visitors at the AA-signposted South Car Park (see campus map on page 20). While this is a pay and display car park, student ambassadors will be distributing free passes to those visitors arriving at the car park before 12.00noon (please note that availability of spaces cannot be guaranteed).

- If you are travelling by train, travel to Birmingham New Street. Then take a

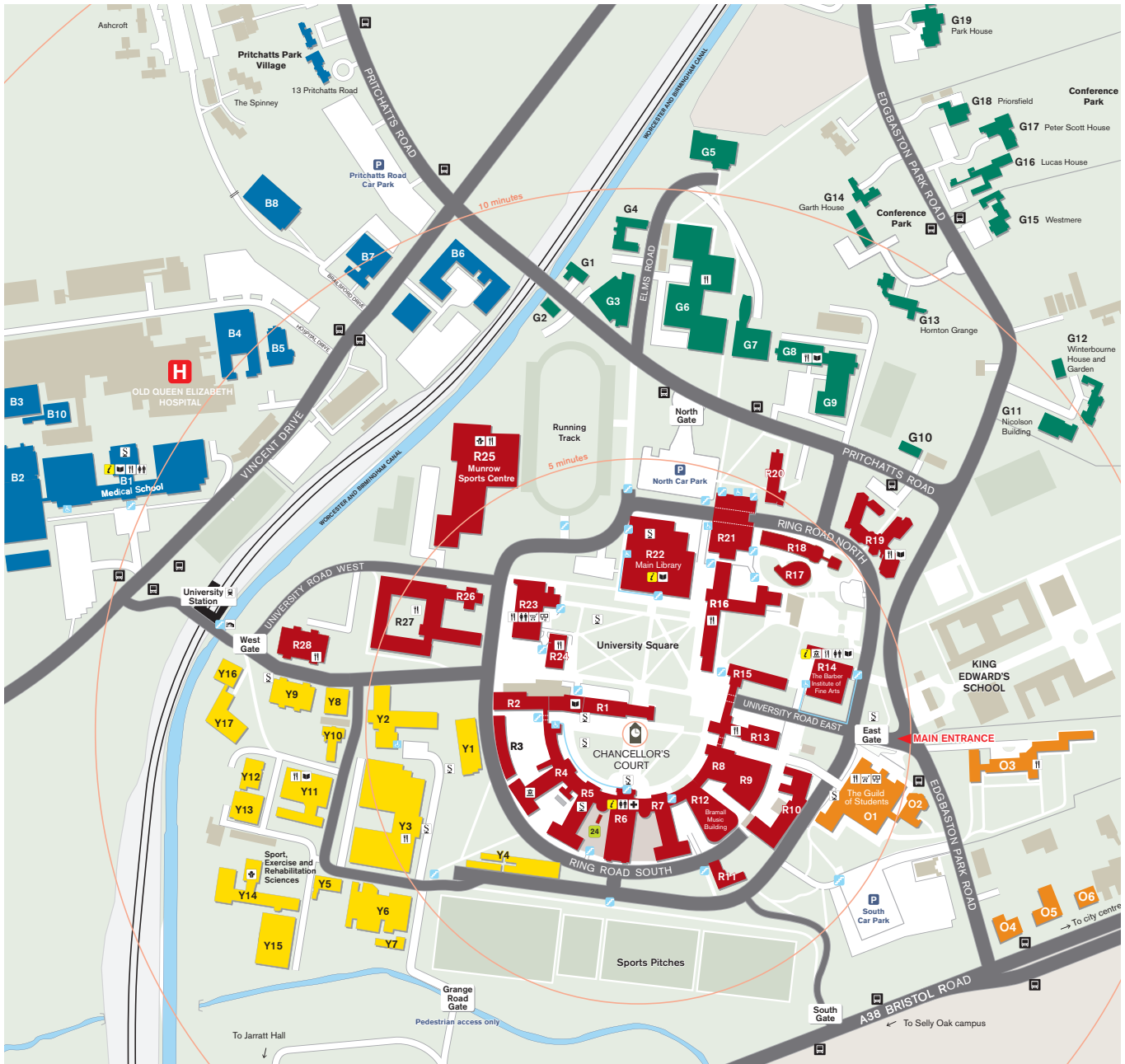
Cross-City train to University station – at least four trains depart from New Street station every hour for University station (train line: Longbridge or Redditch).

- Regular bus services (nos. 61, X62, 63) run from Corporation Street in the city centre.

For information on all of the travel options available to you please visit: www.birmingham.ac.uk/travel



Edgbaston campus map



- R1 Law Building
- R3 Hills Building
- R4 Earth Sciences Aston Webb A Block
- R6 Aston Webb Building
- R10 Physics East Building
- R12 Bramall Music Building
- R13 Poynting Physics Building
- R14 Barber Institute of Fine Arts
- R15 Watson Building
- R16 Arts Building
- R17 Ashley Building
- R19 Education Building
- R20 JG Smith Building
- R21 Muirhead Tower
- R22 Main Library
- R23 University Centre
- R24 Staff House
- R25 Munrow Sports Centre
- R27 Biosciences

- R28 Learning Centre
- O1 Guild of Students (Students' Union)
- O2 St Francis Hall
- O3 Inter-denominational Chaplaincy
- O3 University House
- Y2 Haworth Building
- Y3 Civil and Mechanical Engineering
- Y11 Chemical Engineering
- Y14 Sport, Exercise and Rehabilitation Sciences
- Y16 Institute of Occupational Health
- Y17 Public Health Building

- B1 Medical School
- G3 European Research Institute
- G6 Metallurgy and Materials
- G8 Gisbert Kapp Building
- G9 52 Pritchatts Road
- G12 Winterbourne Botanic Garden

Key

- Y2 Building name
- Information point
- Level access entrance
- Steps
- Visitors car park
- Hospital
- 24-hour security
- Bus stops
- Library
- Museum
- Sport facilities
- First aid
- Food and drink
- Retail
- Toilets
- ATM
- Canal bridge
- Sculpture trail
- Rail
- average walk time from Chancellor's Court

This map, with a more detailed index, can be found on the University's website at:
www.birmingham.ac.uk/directions