

Mental Health: What The Data Tells Us

Stephen Watkins and Zoë Page



Benchmarking Network

Raising standards
through sharing
excellence



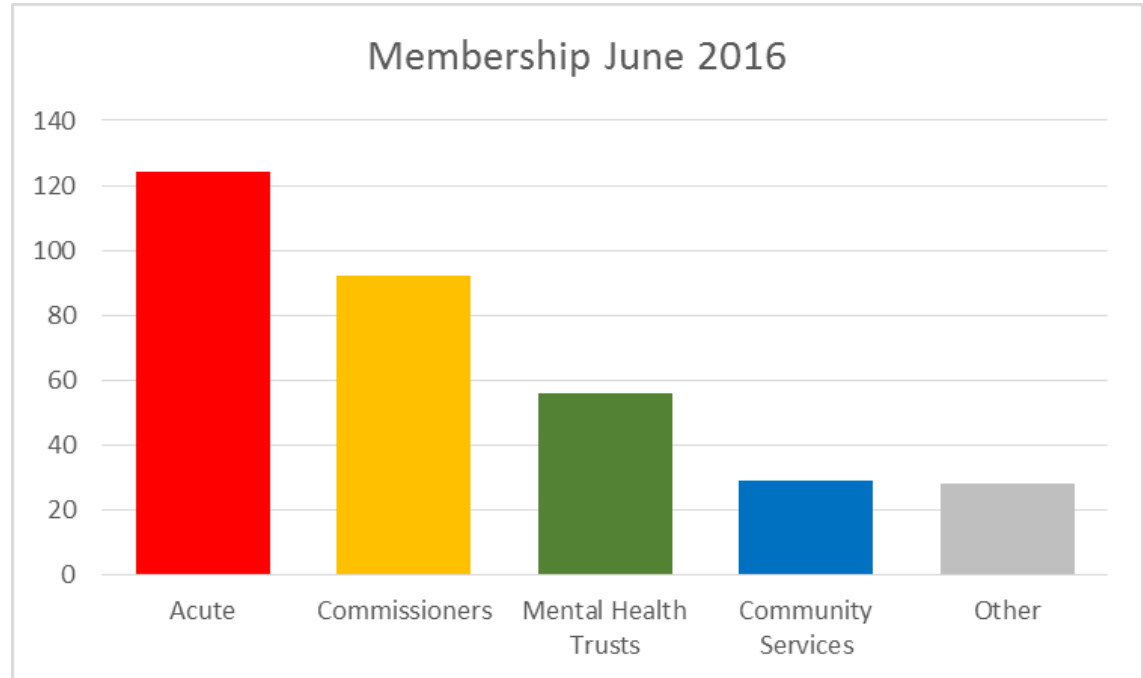
Overview

- NHS Benchmarking Network
- Acute pathway
- Community based care
- Workforce
- Economics
- Discussion points



NHSBN Membership June 2016

- 329 members
- 79% Acute Trusts
- 100% MH Trusts
- 81% Community Providers (over 100 community providers in total)
- 48% of CCG Commissioners
- 100% coverage in Wales
- Scotland / N. Ireland
- Independent sector
- National organisations (NHSE, DH, Monitor)



Benchmarking Network



Benchmarking project reports and good practice guidance



- Mental health inpatients
- Community mental health
- CAMHS
- Learning Disability



- Community services
- Community hospitals



- Emergency Care
- Radiology
- Pharmacy
- Theatres
- Older people
- Acute therapies



- Integrated Care
- Medicine Management
- Urgent Care
- Planned Care



- Shared & Corporate services



- Intermediate care



National interest & involvement



Royal College of Physicians



National Assembly for Wales



Monitor



Trust Development Authority



London's Mental Health needs



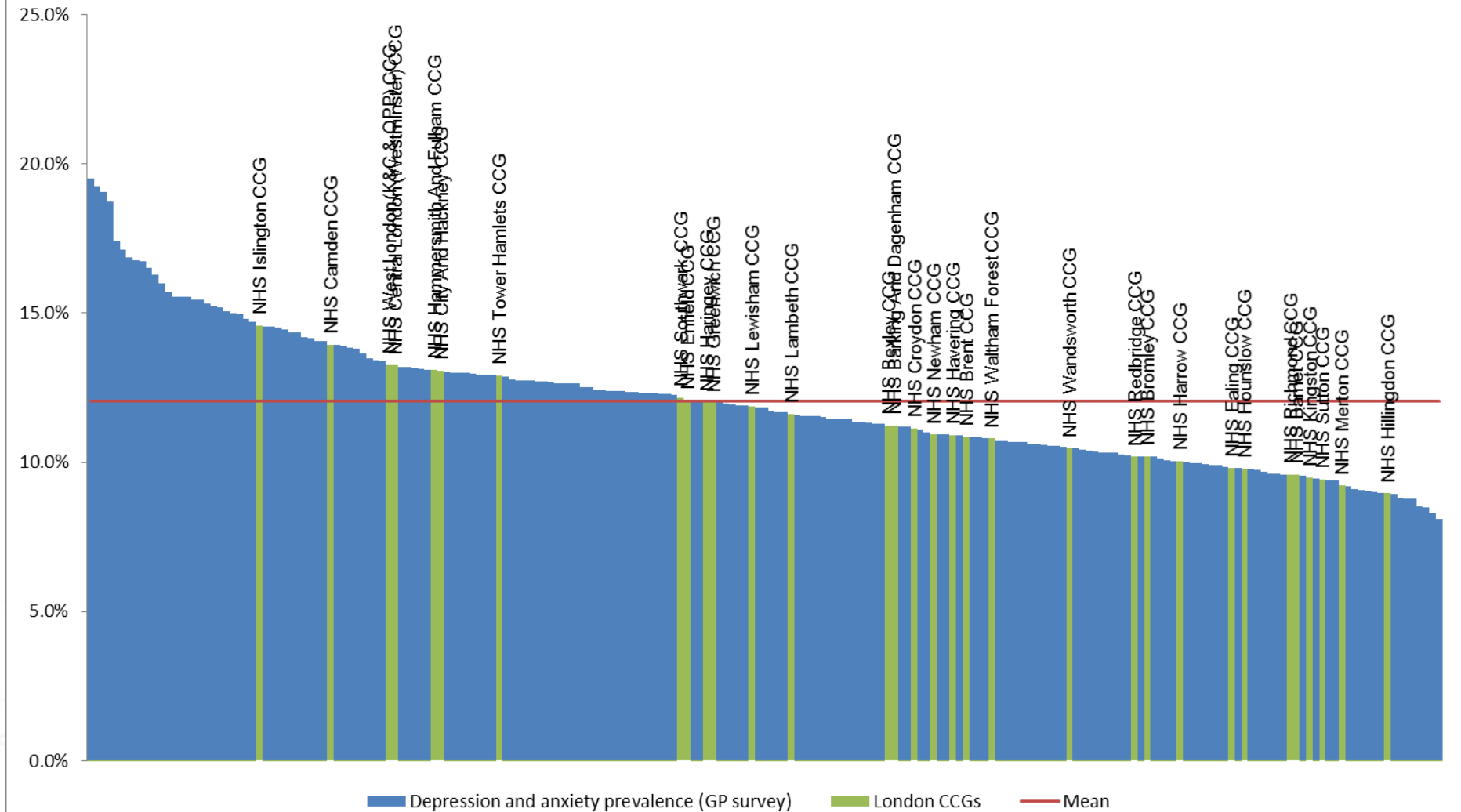
Benchmarking Network

Raising standards
through sharing
excellence



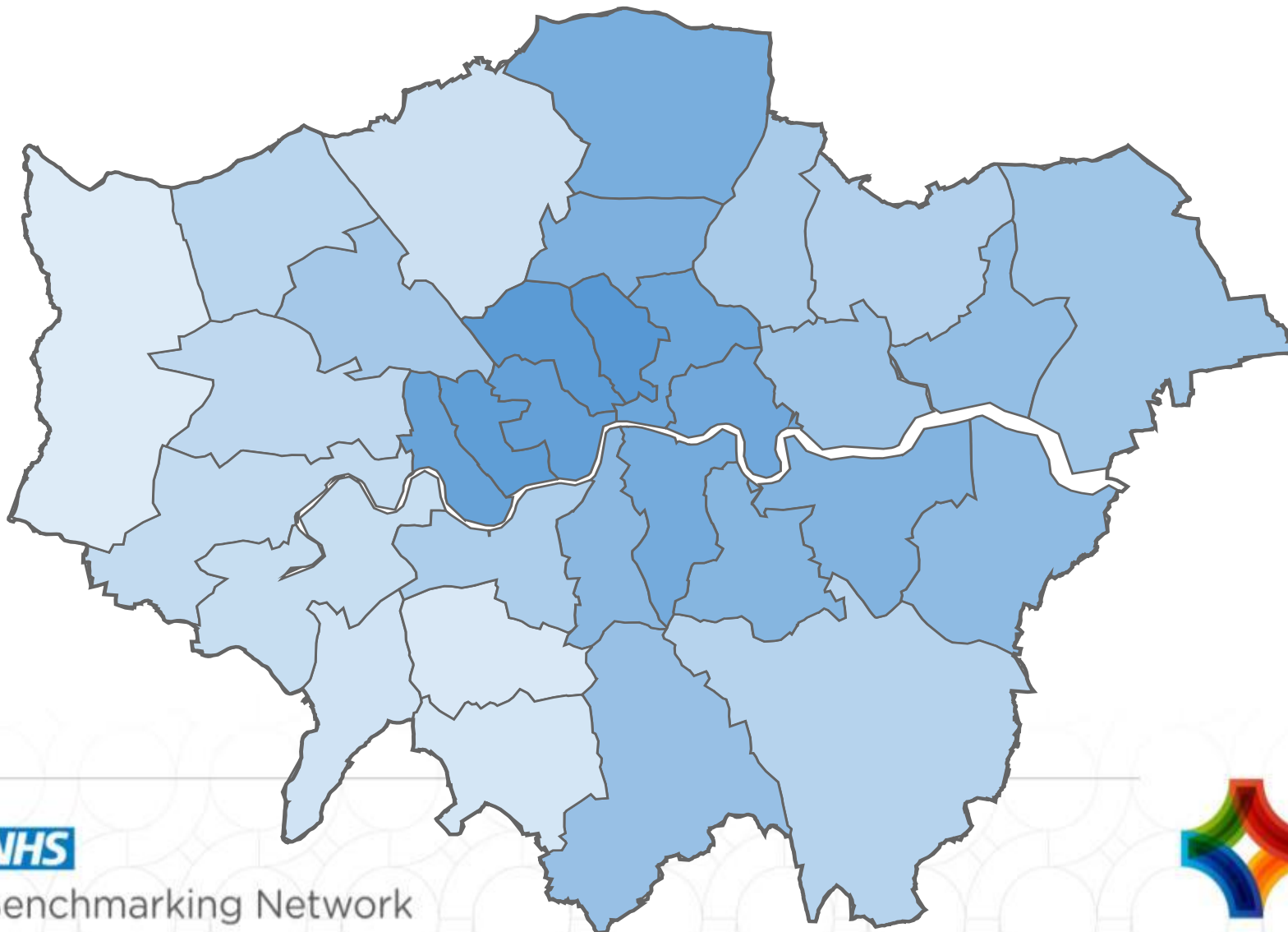
Exploring variation - prevalence

Depression and anxiety prevalence (GP survey)



Exploring variation - prevalence

Depression and anxiety prevalence (GP survey)



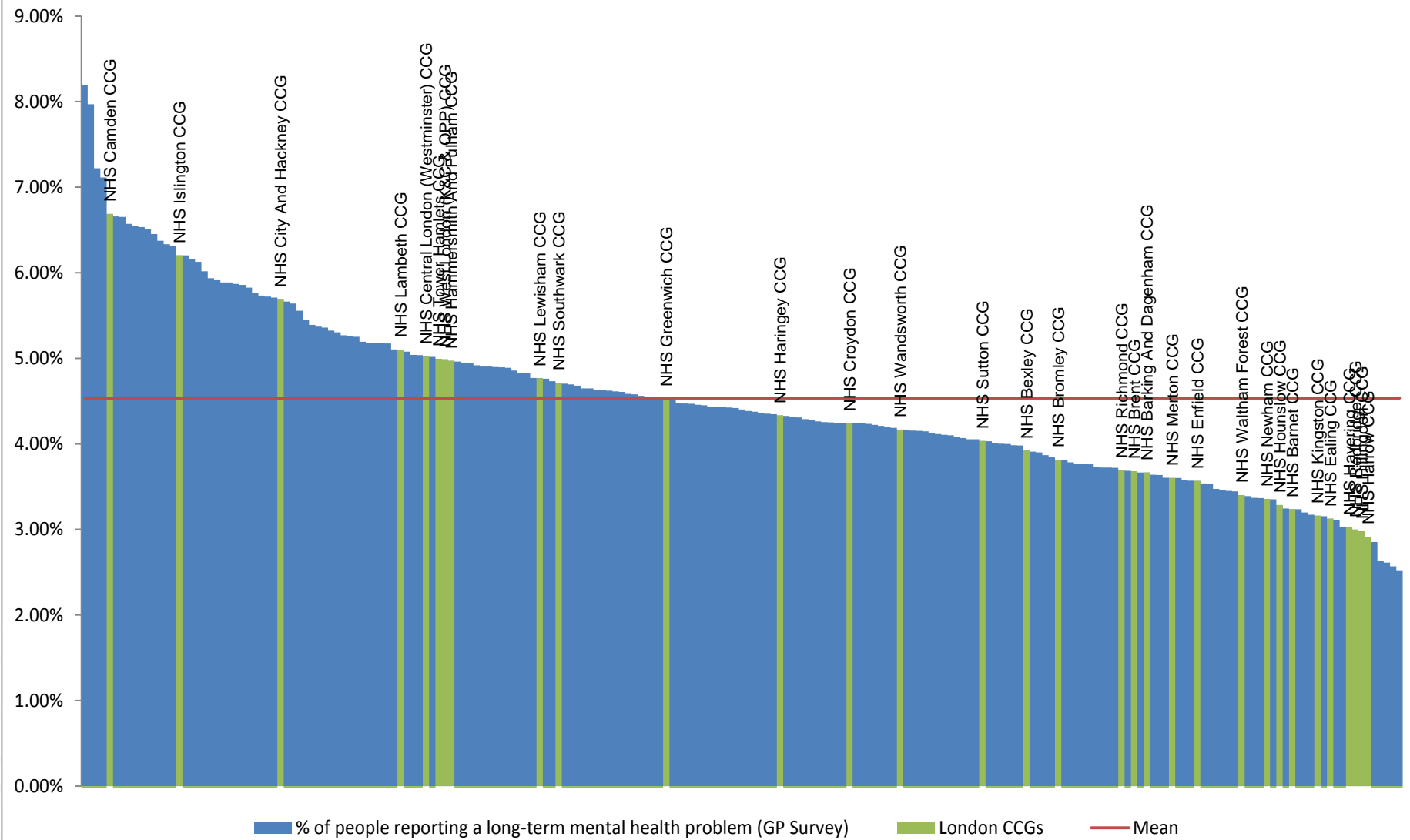
NHS

Benchmarking Network



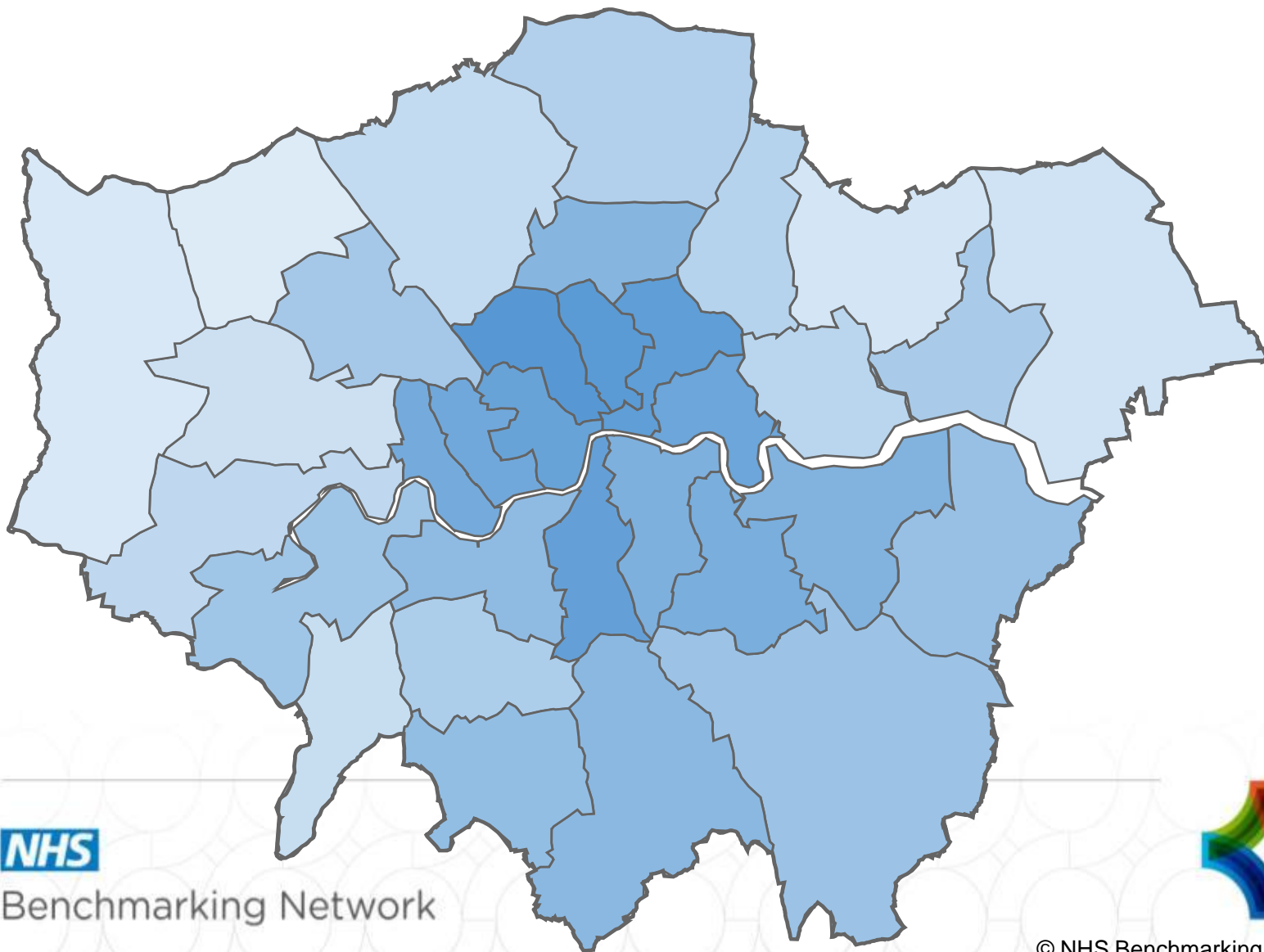
Exploring variation - prevalence

% of people reporting a long-term mental health problem (GP Survey)



Exploring variation - prevalence

% of population reporting a long-term mental health problem



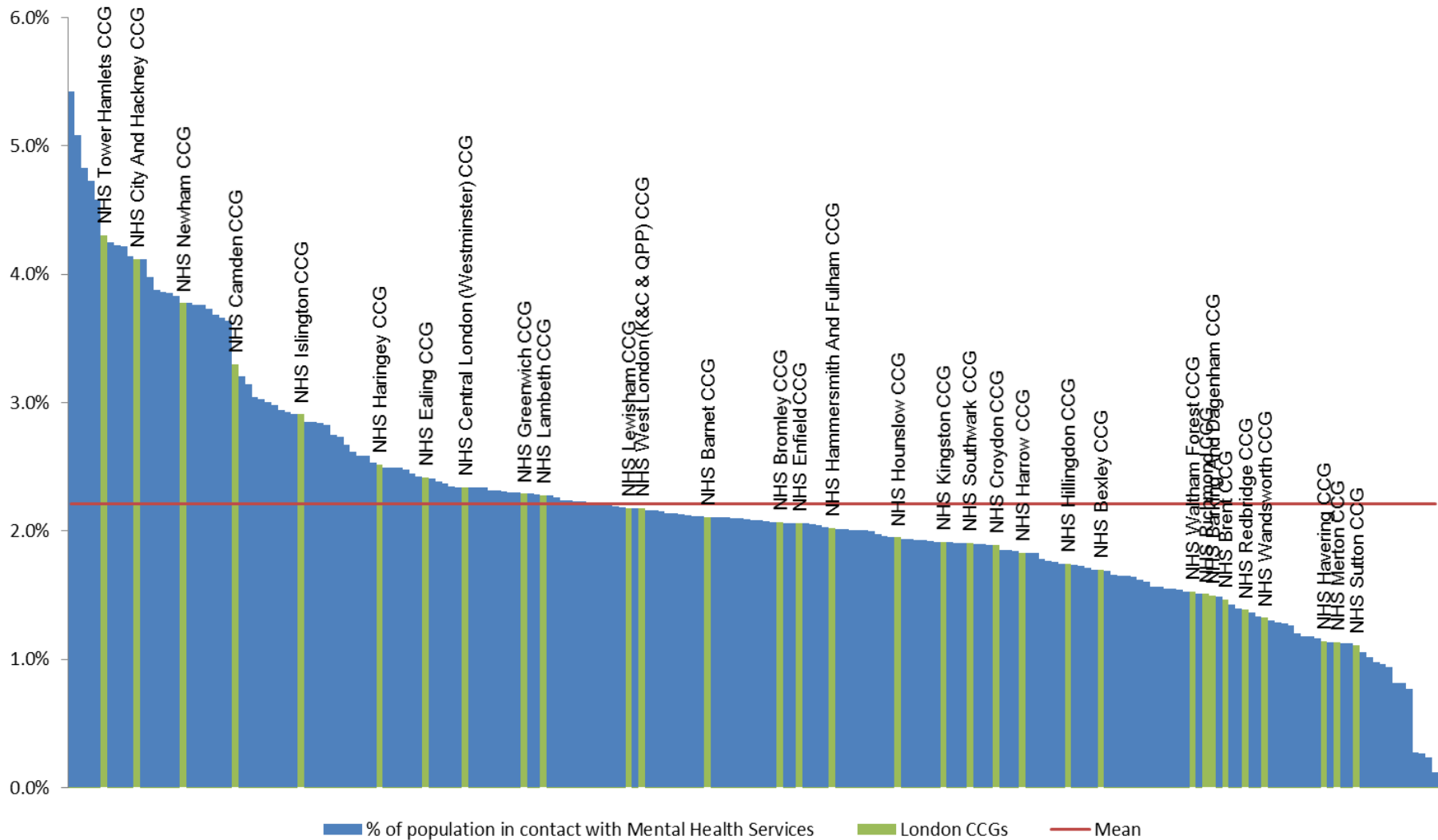
NHS

Benchmarking Network



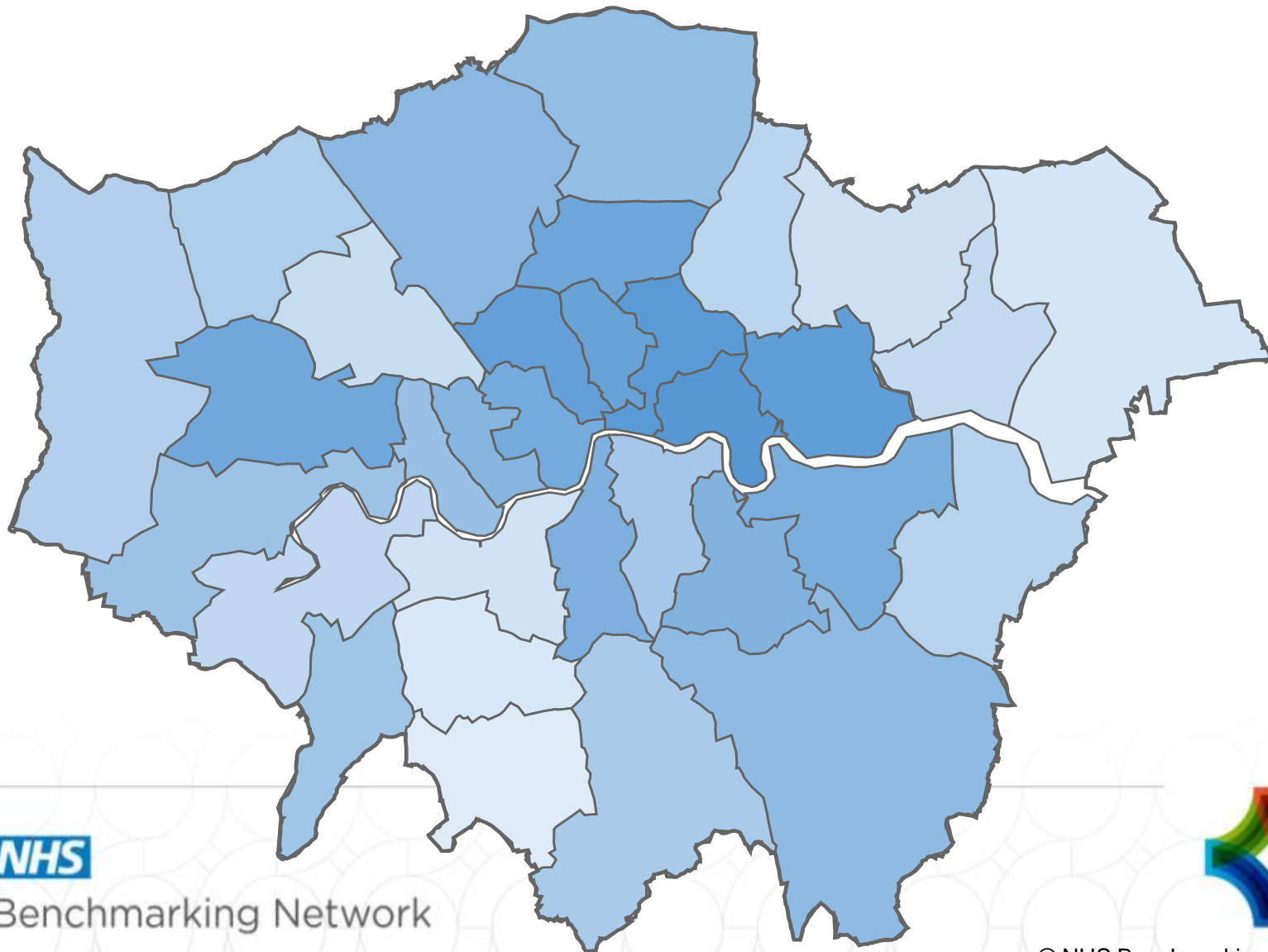
Exploring variation - prevalence

% of population in contact with Mental Health Services



Exploring variation - prevalence

People in contact with mental health services per 100,000 population



NHS

Benchmarking Network



© NHS Benchmarking Network 2016

Background and Process 2015

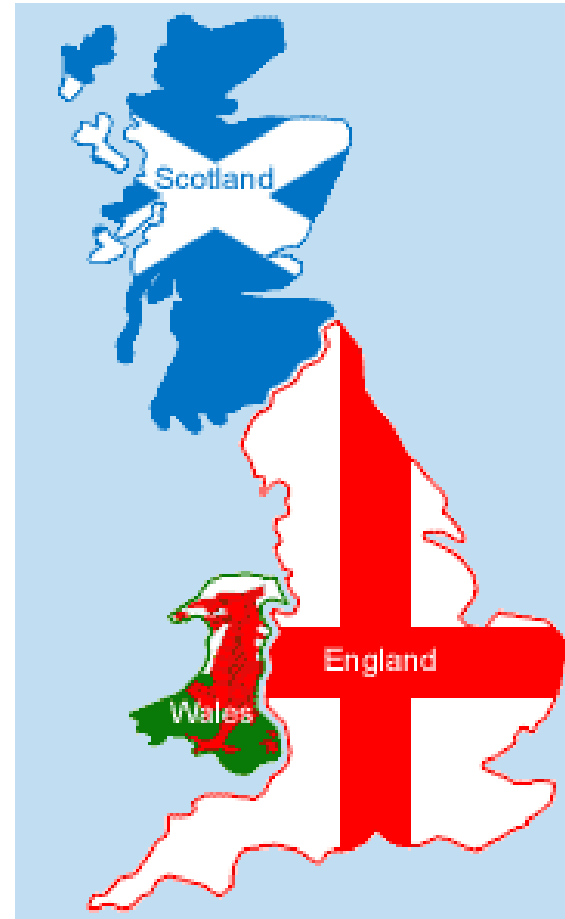
- MH reference group direction and content management
 - Trust and LHB Chief Executive consultation
 - Definitions development
 - Collection process May – August 2015
 - Telephone helpline, e-mail, and Q&A support to members
 - Data validation – consistency review, outlier feedback, member review
 - First draft reports
 - Changes, updated reports and sign-off
 - Publication
-
- Replicated for 2016 – Conference results launch 2nd November 2016



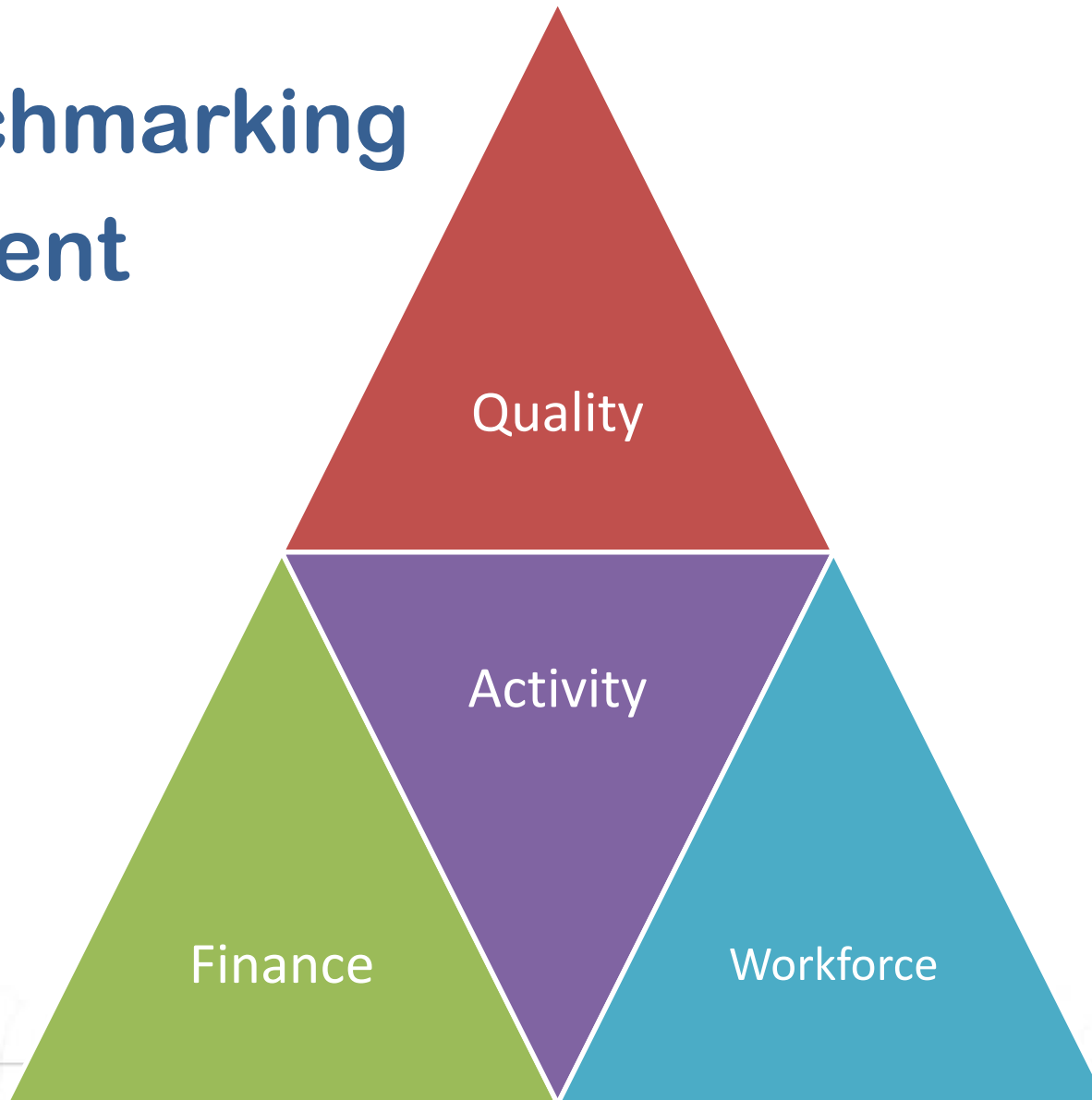
Participants

Adult Inpatient and Community Mental Health Benchmarking

- 67 participants - largest ever number of contributors
- 100% coverage across Trusts and LHBs England & Wales
- Scotland representation
- Additional independent sector providers for specialist services



Benchmarking Content



Benchmarking Results 2015



Benchmarking Network

Raising standards
through sharing
excellence



Adult Acute services



Benchmarking Network

Raising standards
through sharing
excellence

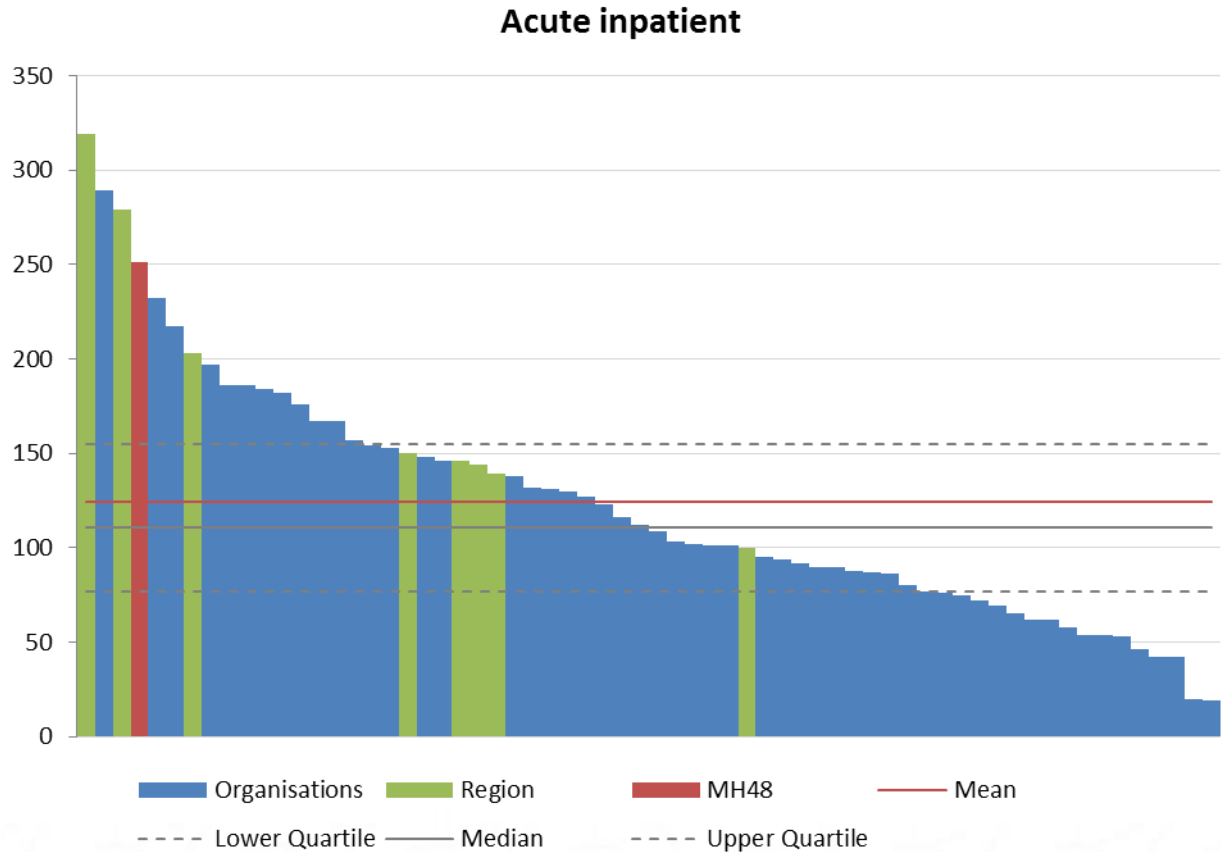


Example benchmarking comparisons

Adult acute beds – aggregate values by Trust

- Not a benchmarking comparison
- Mean value of 124 beds per Trust / LHB

London highlighted

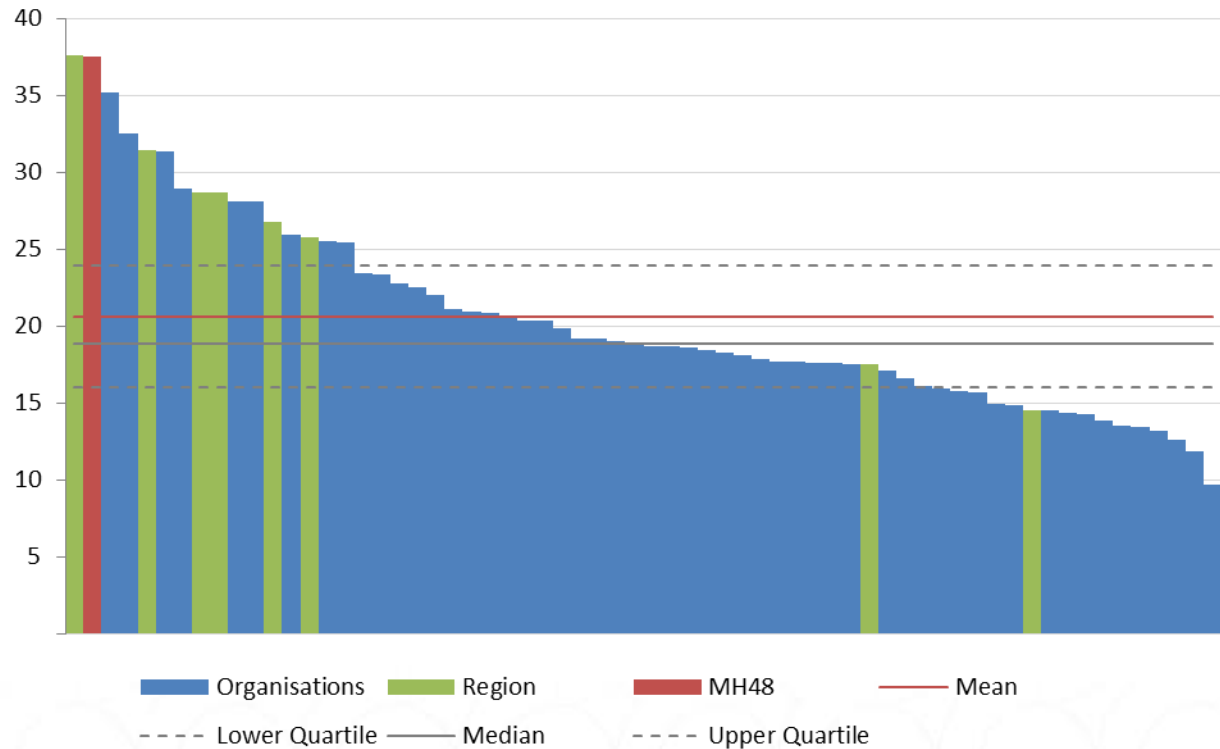


Example benchmarking comparisons

Adult acute beds per 100,000 registered population (16-64)
(5% reduction in national mean and median positions)

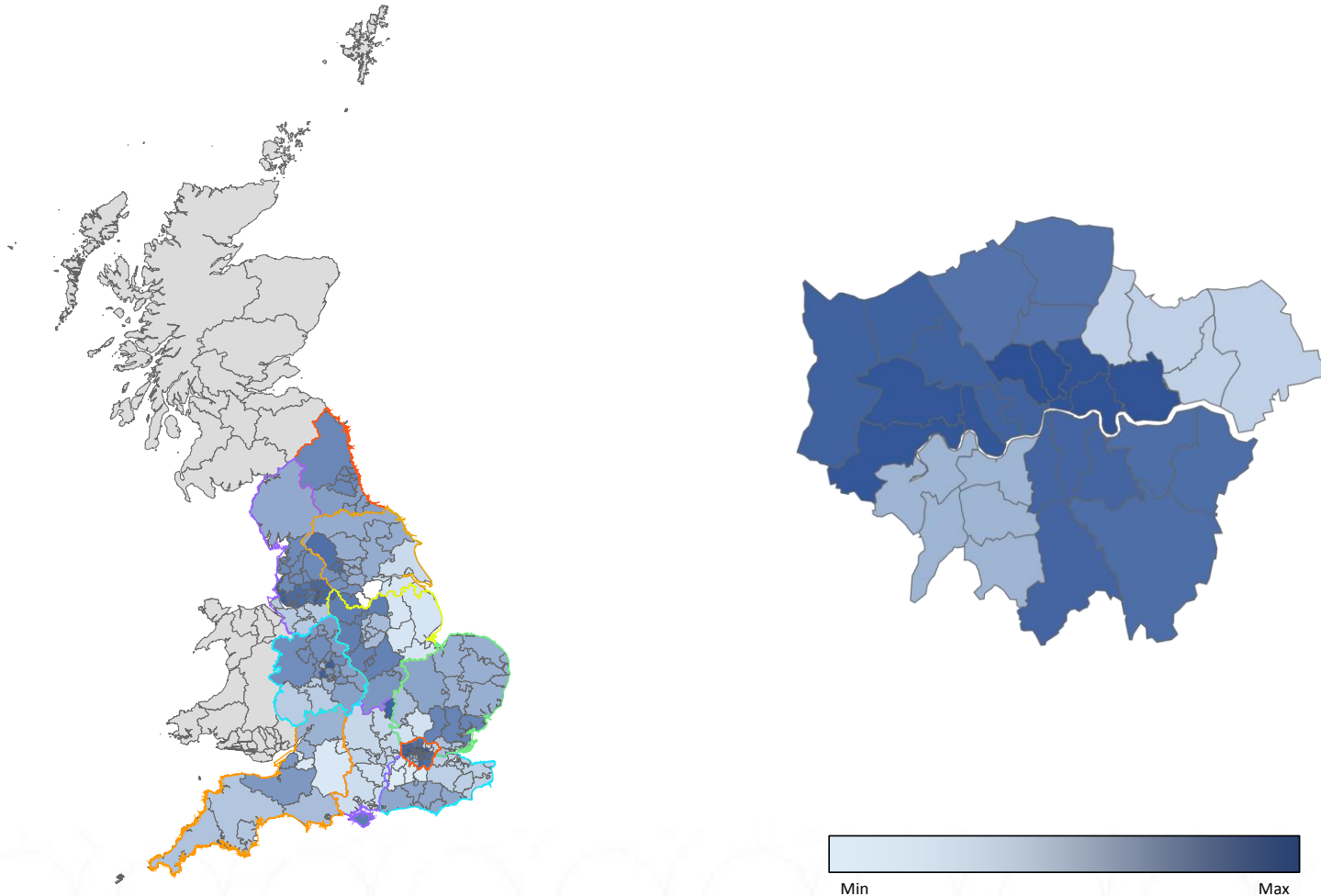
- Mean average bed provision of 21 adult acute beds per 100,000 registered population (16-64)
- Median = 19 beds
- 17% reduction in last 3 years
- London peer group shown, mean = 27.6 beds per 100k

Acute inpatient per 100,000 core registered population covered by service



Map of Variation – Adult Acute beds

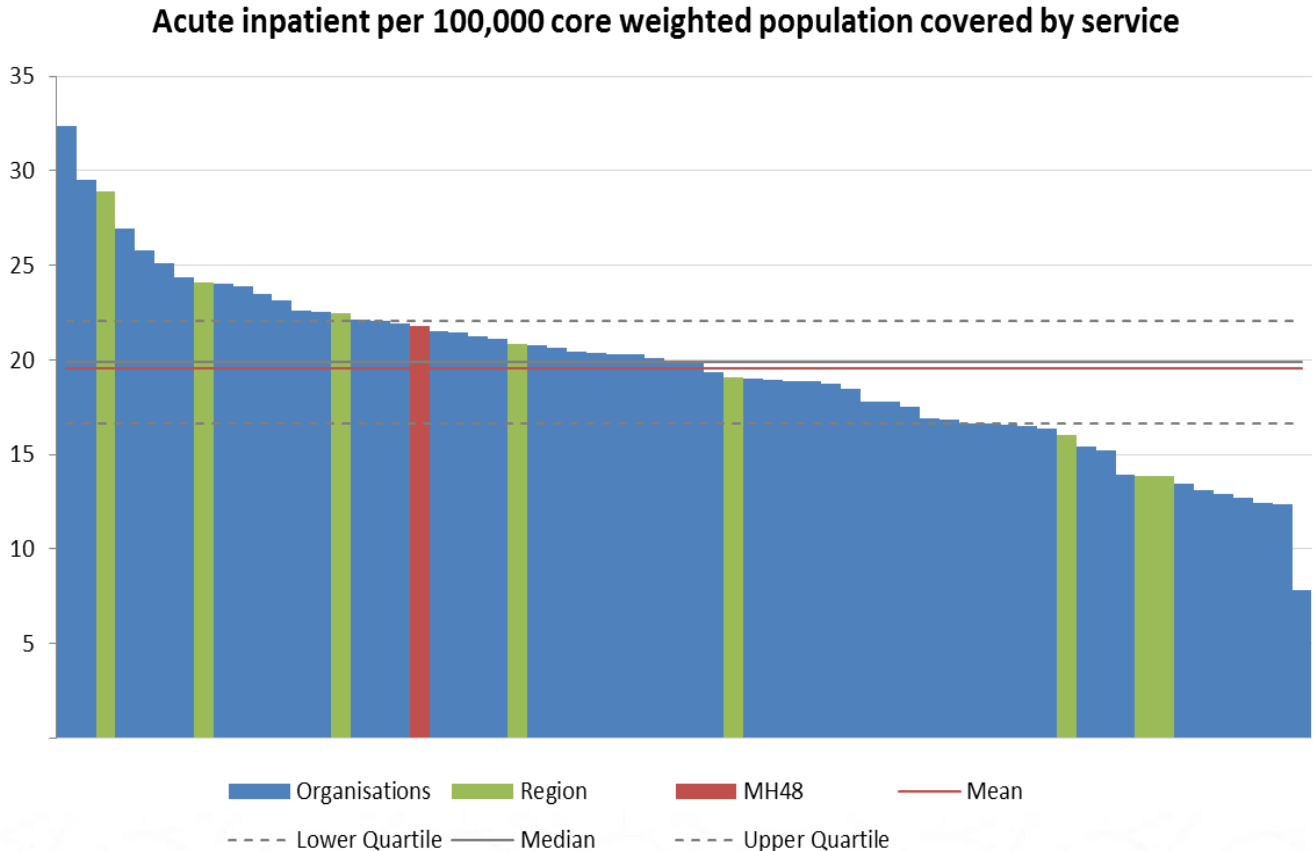
Adult acute beds per 100,000 registered population (16-64)



Example benchmarking comparisons

Adult acute beds per 100,000 weighted population (16-64)

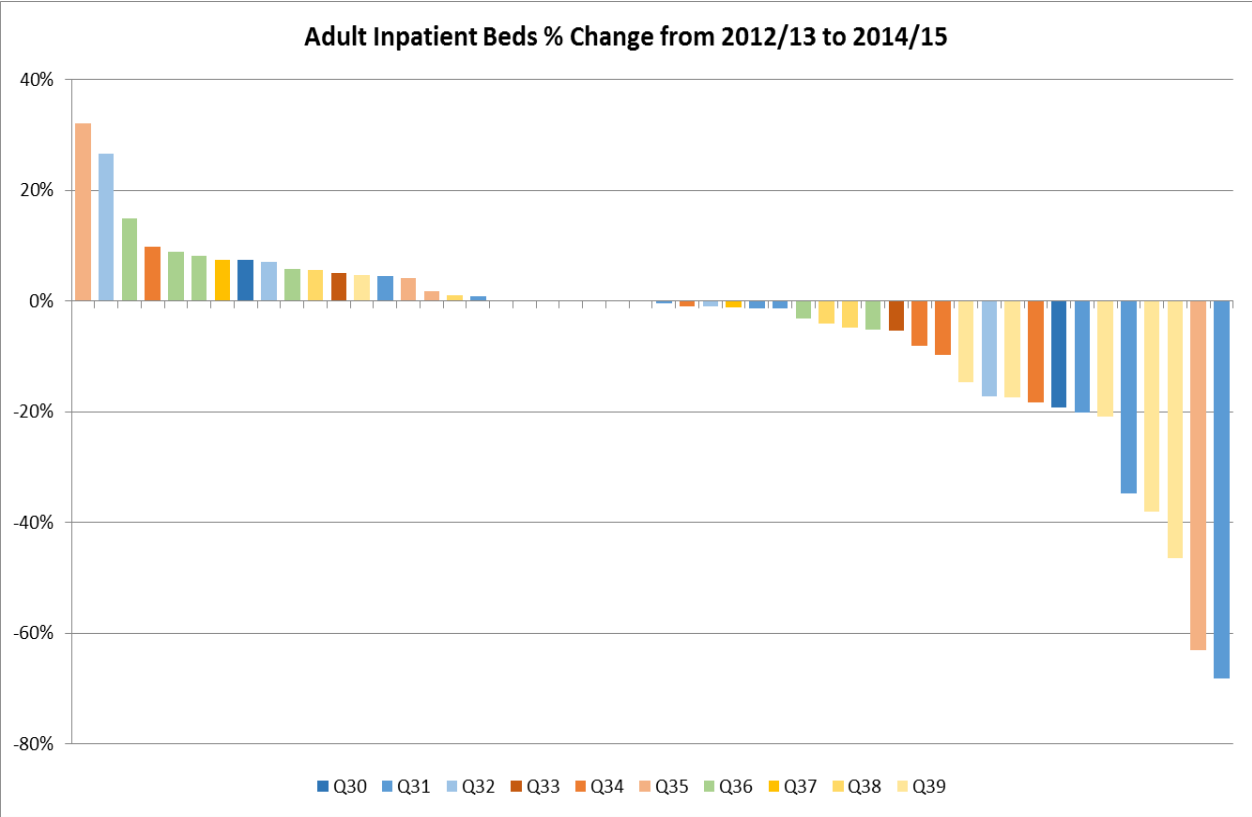
- Weighted population comparisons change the position in the distribution for many Trusts
- London average = 20.1



Example benchmarking comparisons

Bed reductions - Adult acute beds per 100,000 population (16-64) over 3 years 2012 - 2015

Q30	North East SHA
Q31	North West SHA
Q32	Yorkshire and the Humber SHA
Q33	East Midlands SHA
Q34	West Midlands SHA
Q35	East of England SHA
Q36	London SHA
Q37	South East Coast SHA
Q38	South Central SHA
Q39	South West SHA

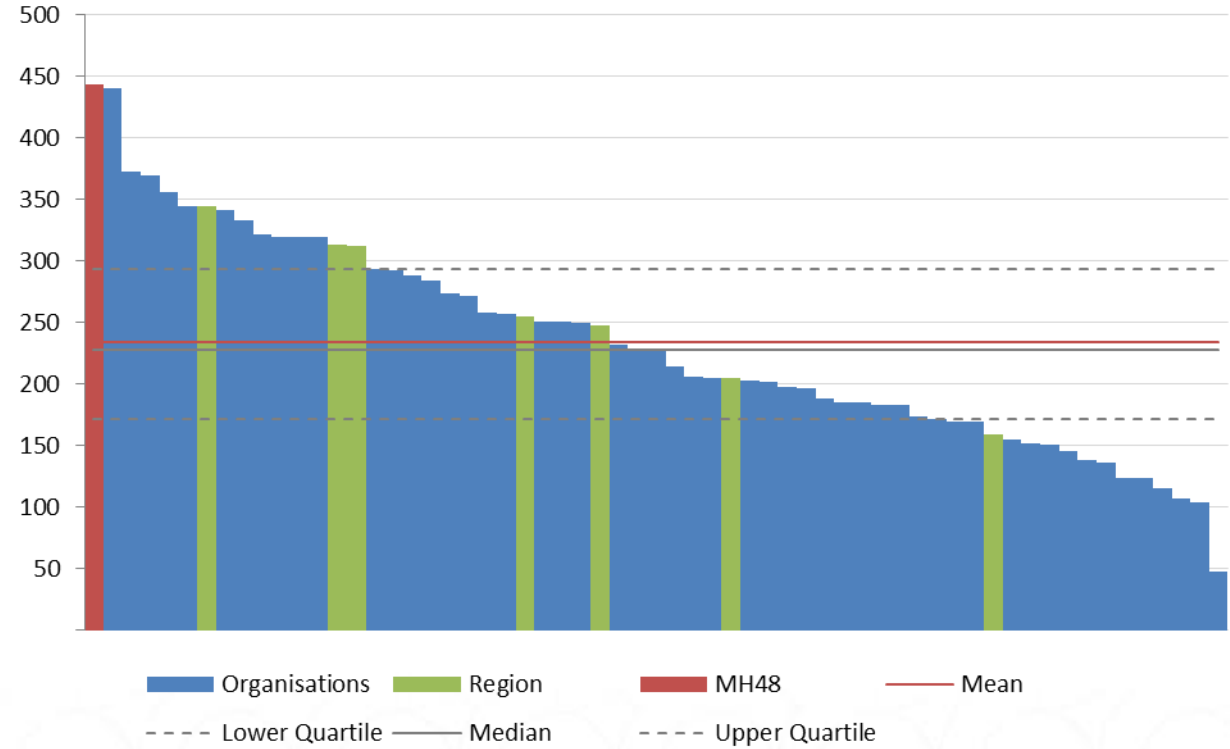


Example benchmarking comparisons

Admissions to adult acute beds per 100,000 registered population (16-64), (minimal change)

- 2014/15 mean admissions are 234 per 100,000 population (median is 221)
- 232 in 2013/14
- 236 in 2012/13
- London = 285 per 100,000 population**

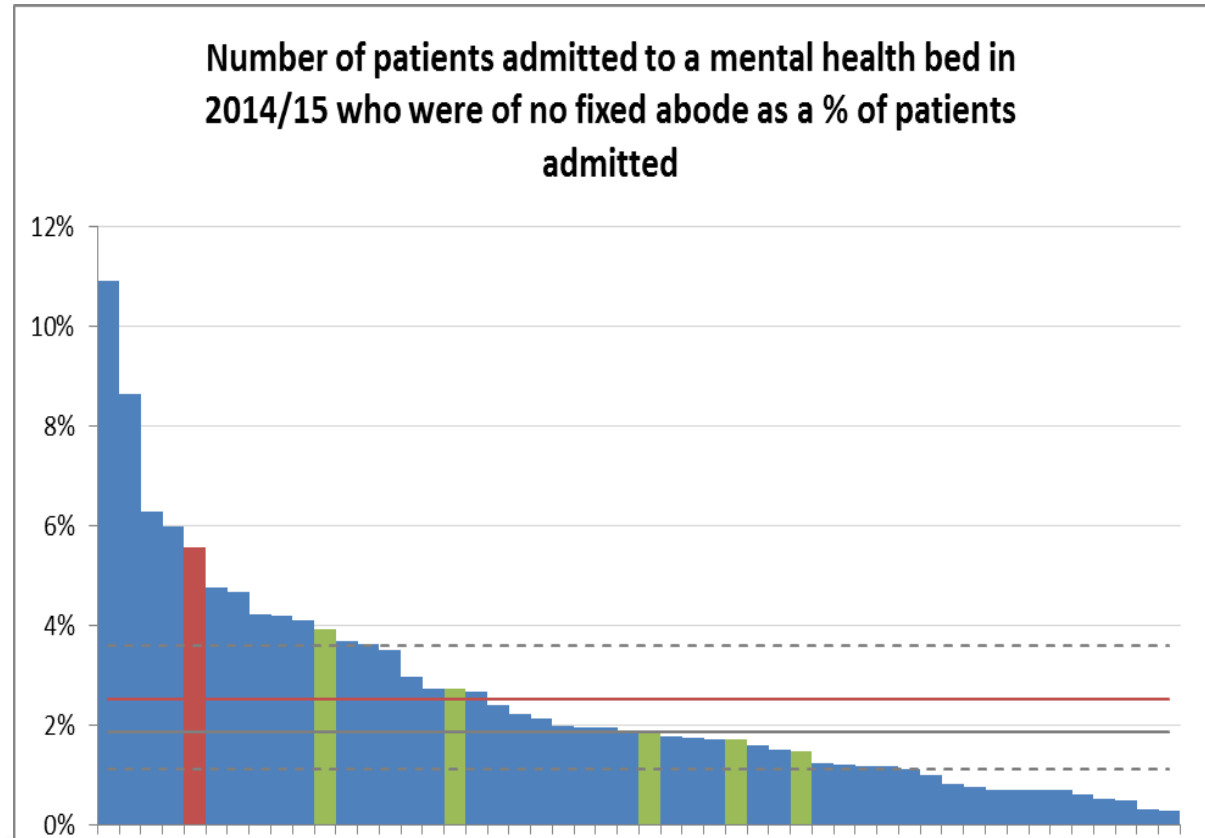
Number of admissions to inpatient care during the year: per 100,000 core registered population covered by service



Adult Acute Admissions

Admissions of patients of no fixed abode

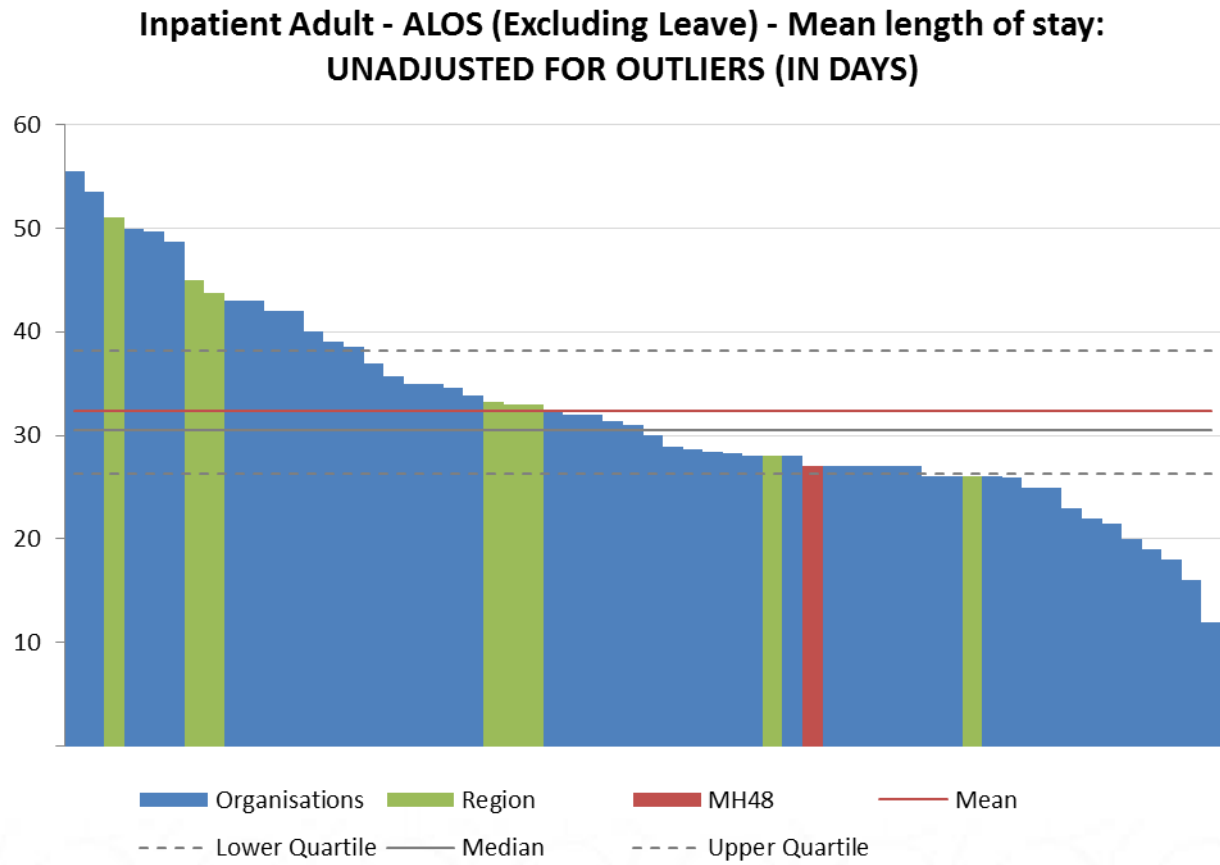
- Nationally, 2.5% of admissions to mental health beds are for patients of no fixed abode
- **London position = 3%**



Example benchmarking comparisons

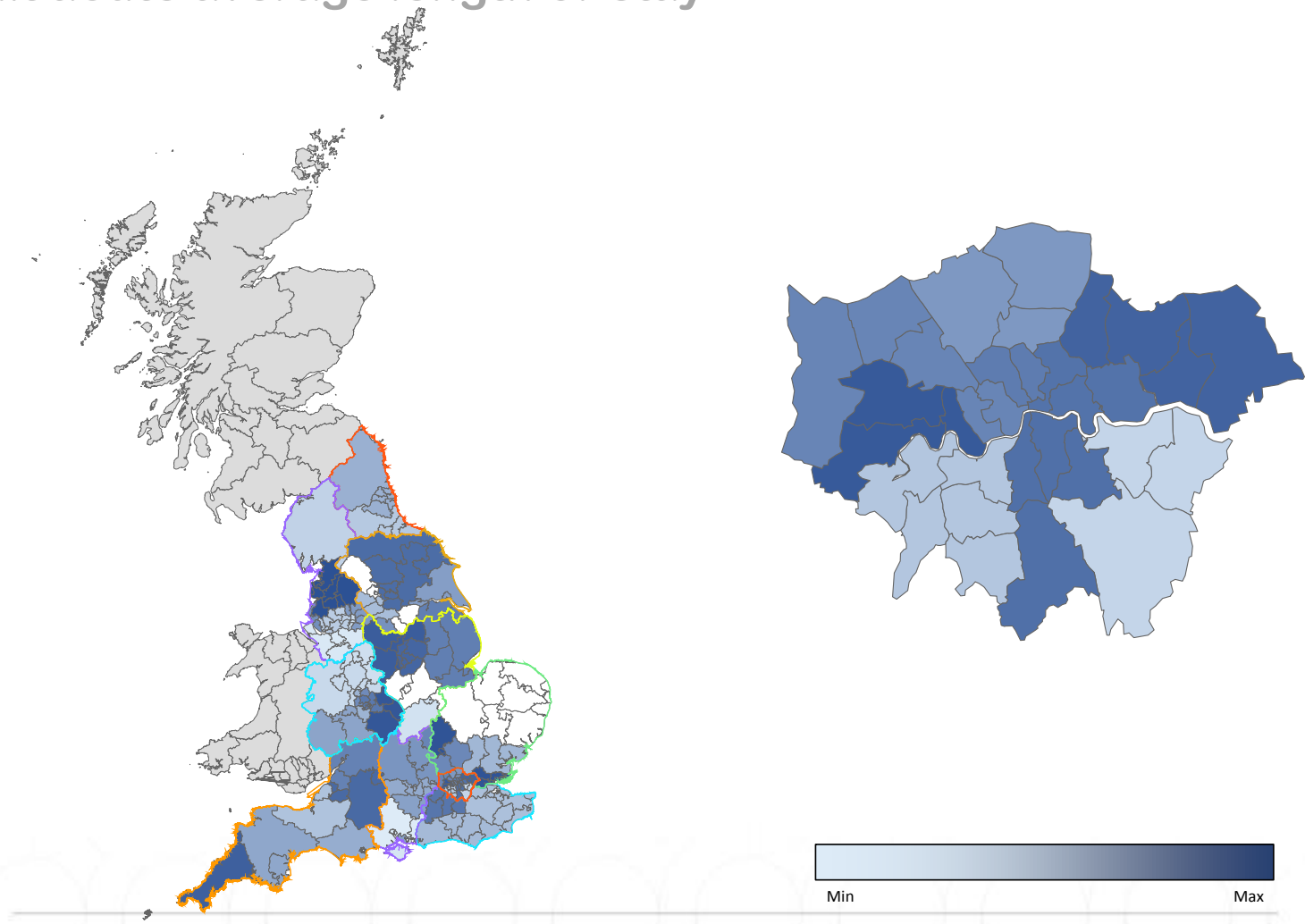
Mean length of stay in adult acute beds excluding leave

- 2014/15 mean average length of stay is 32 days
- 2013/14 32 days
- 30.2 days in 2012/13
- London = 35.6 days**



Map of Variation – Adult Acute length of stay

Adult acute average length of stay



Benchmarking Network



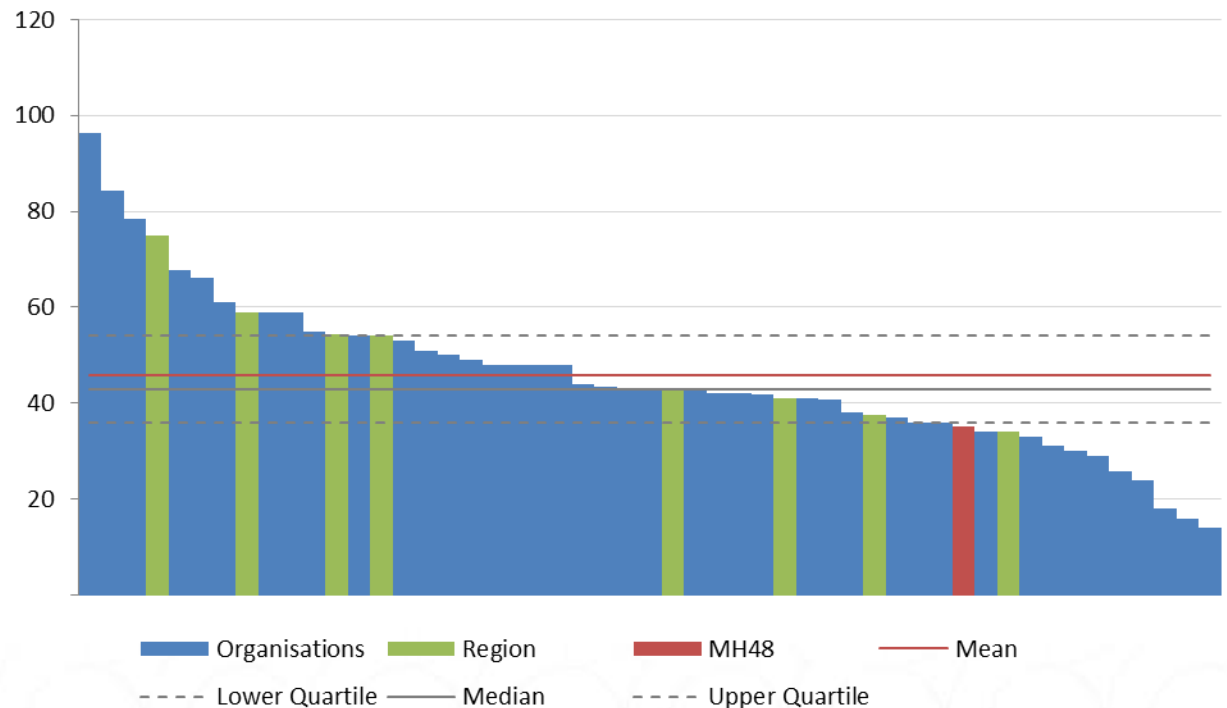
Example benchmarking comparisons

Mean length of stay in adult acute beds (excluding leave)

Patients under Mental Health Act section

- 2014/15 mean ALOS = 46 days
- 2013/14 mean is 44 days
- 2012/13 = 45 days
- London = 48 days if detained under MHA

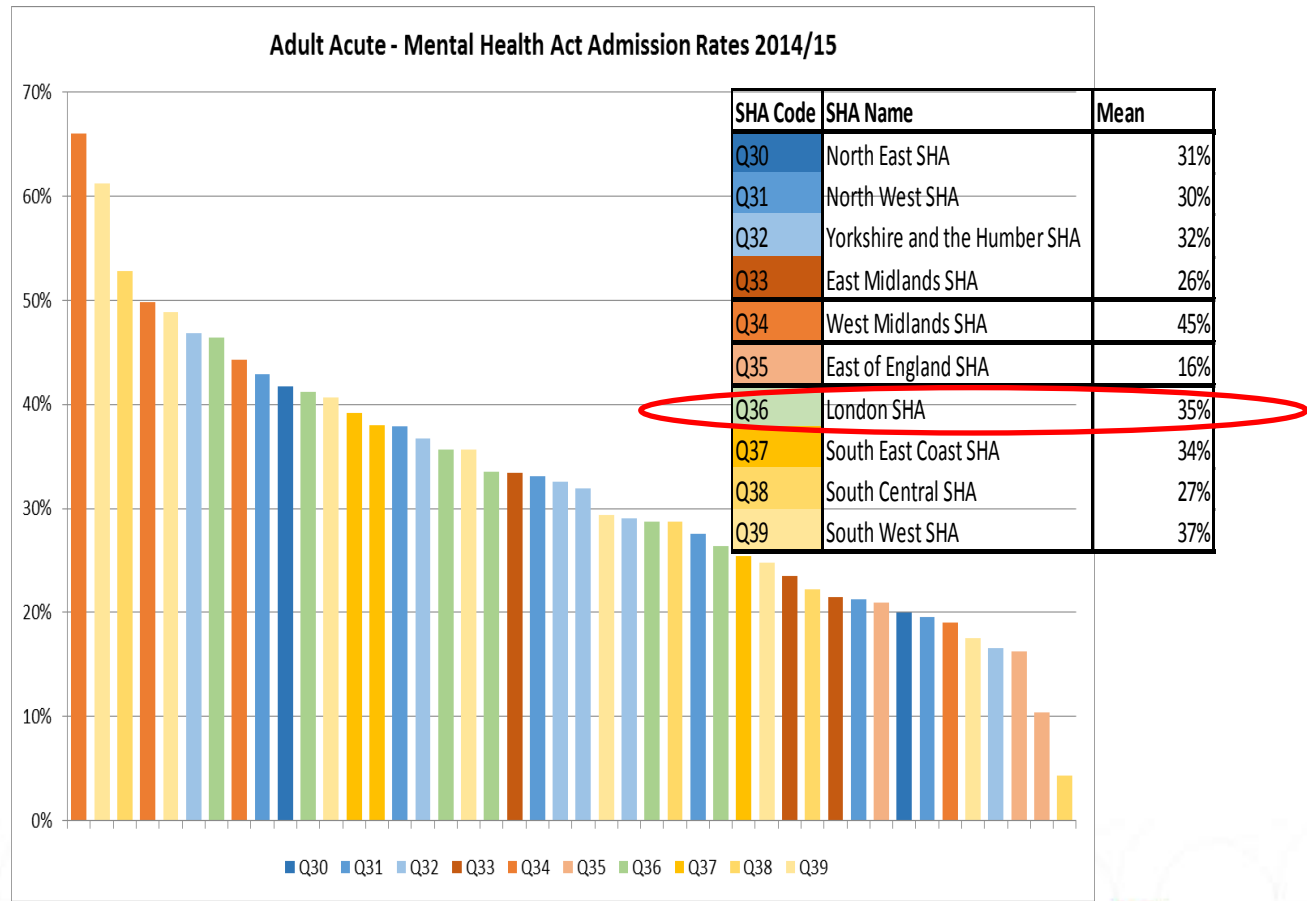
Inpatient Adult - ALOS (Excluding Leave) - Mean length of stay for patients admitted under Mental Health Act section: UNADJUSTED FOR OUTLIERS (IN DAYS)



Example benchmarking comparisons

Use of the Mental Health Act

- Overall admissions under the Mental Health Act increased by 10% last year to 33% of all admissions
- Adult acute admissions shown by Trust

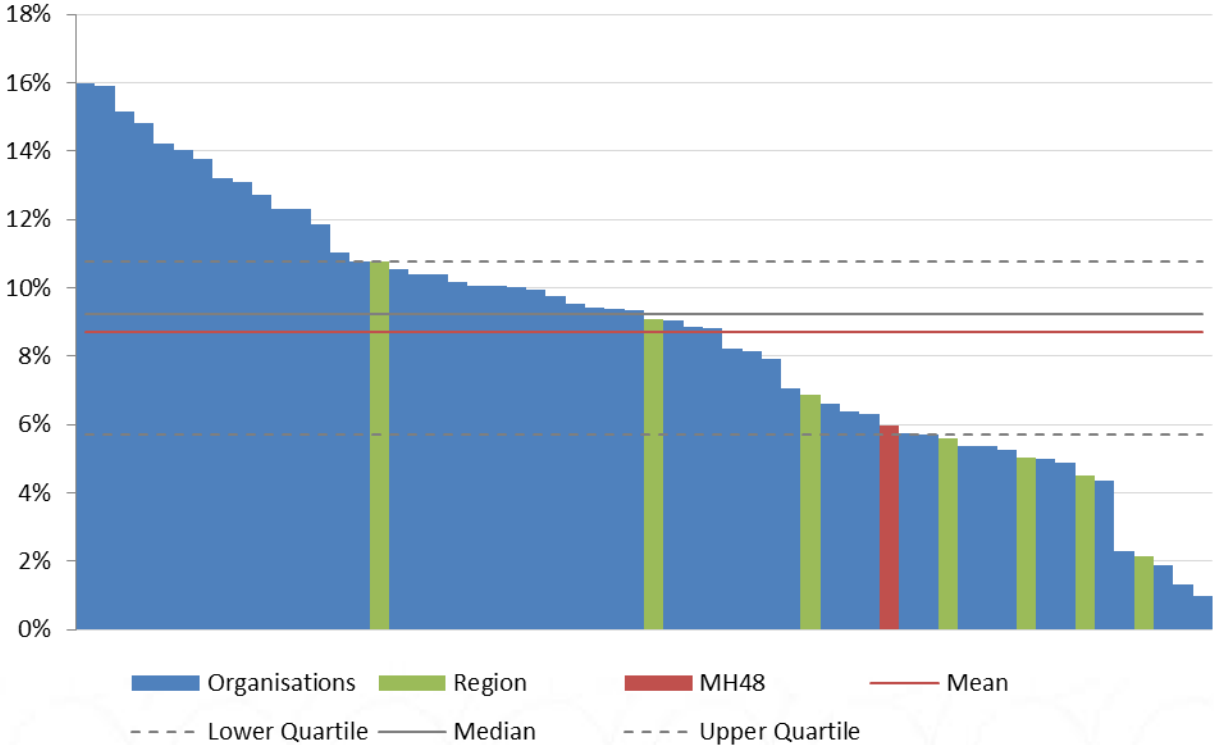


Example benchmarking comparisons

Unplanned re-admissions to adult acute beds per 100,000 registered population (16-64) (marginal reduction)

Number of emergency readmissions within 30 days during the year: as a % of admissions

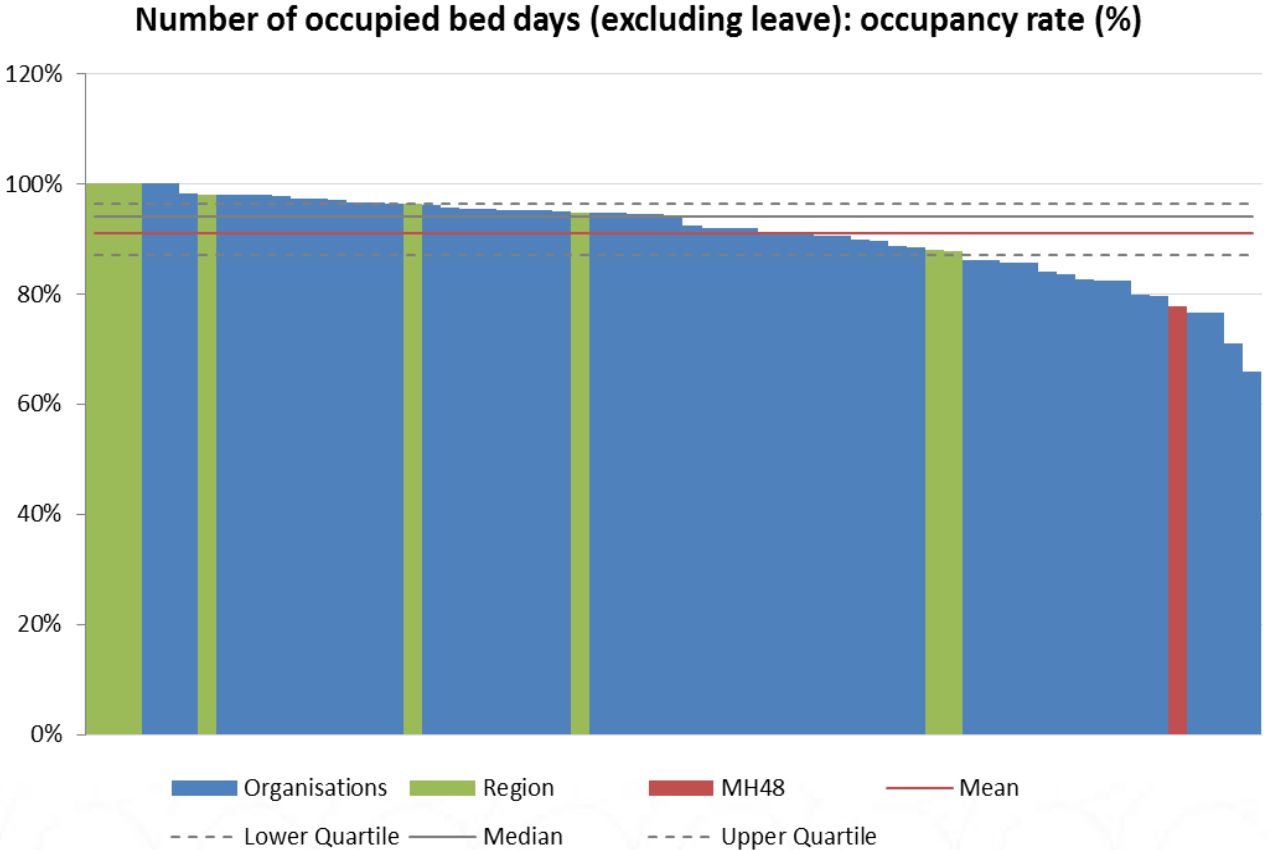
- 2014/15 median = 9.2%
- 2013/14 mean re-admissions = 8.8%
- 2012/13 rate = 9%
- London = 6%**



Example benchmarking comparisons

Adult acute bed occupancy excluding leave (national increase)

- 2014/15 median bed occupancy increases to 94% from 93% 2013/14, & 89% in 12/13
- London median = 96%
- 4th year of occupancy increase

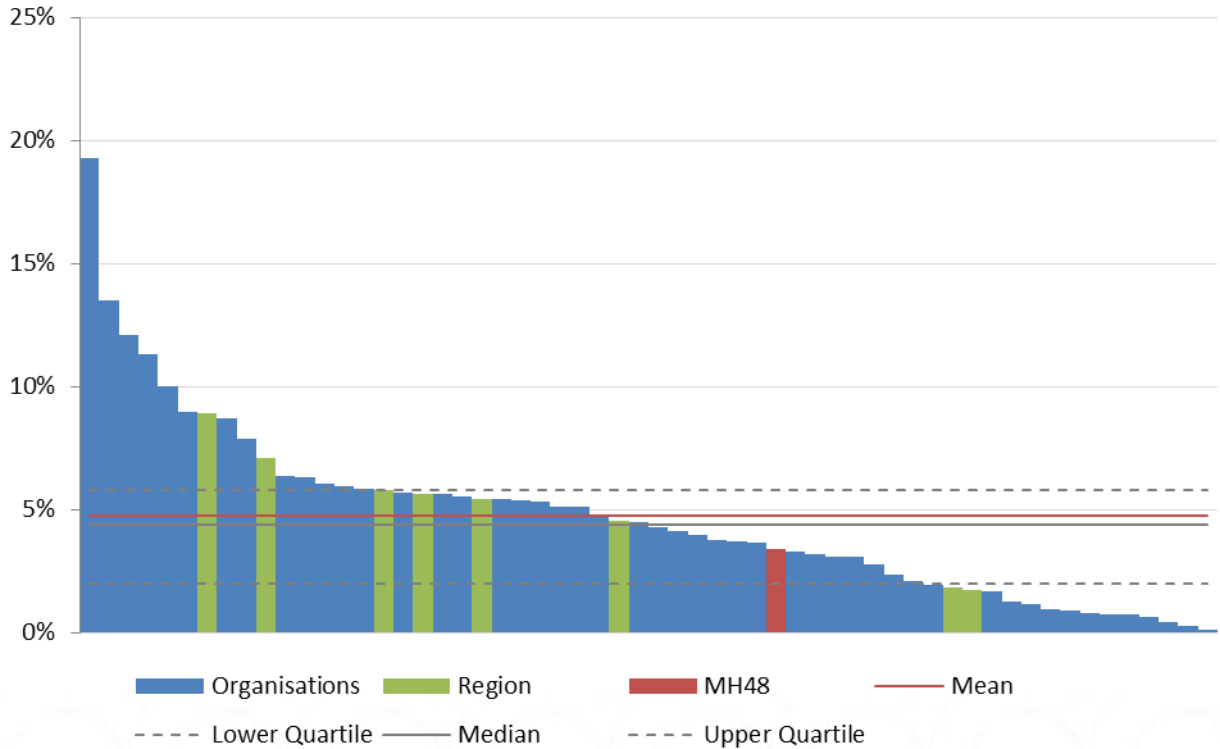


Example benchmarking comparisons

Delayed transfers of care 2014/15 as % total bed days (national increase)

- 2014/15 DTOC accounts for 4.7% of all Adult Acute bed days
- 4.1% in 2013/14
- 3.8% 2012/13
- **5% in London**

Total number of bed days lost: as a % of occupied bed days (excluding leave)

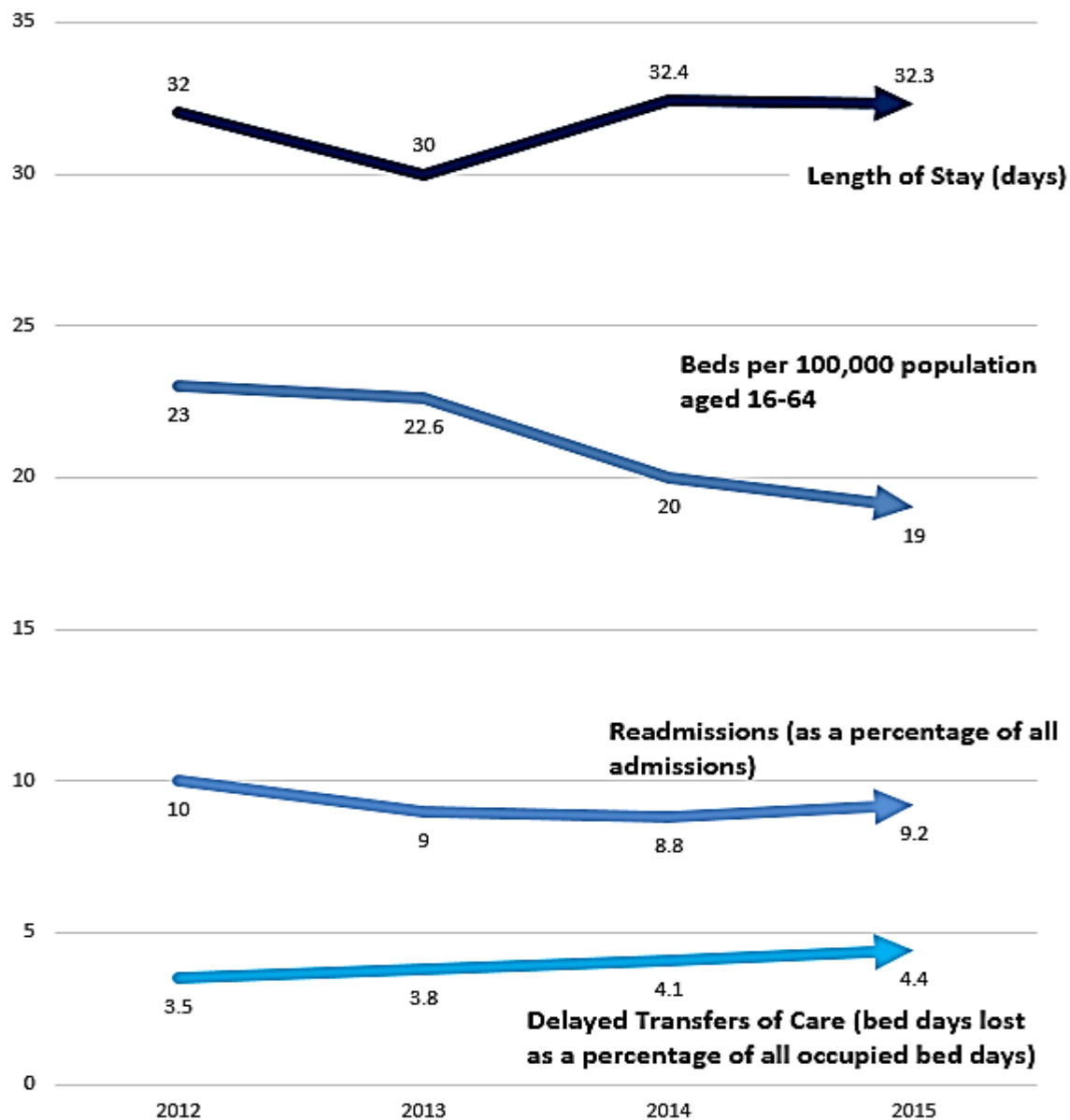


Adult Acute conclusions

- Fewer beds
- Acuity increased
- Psychosis cohort
- Occupancy up
- DTOC pressure
- Readmissions

- London has distinct pressure

Adult Acute Trends
(Summary: England, Wales & Scotland)
2012 - 2015



Older Adult services



Benchmarking Network

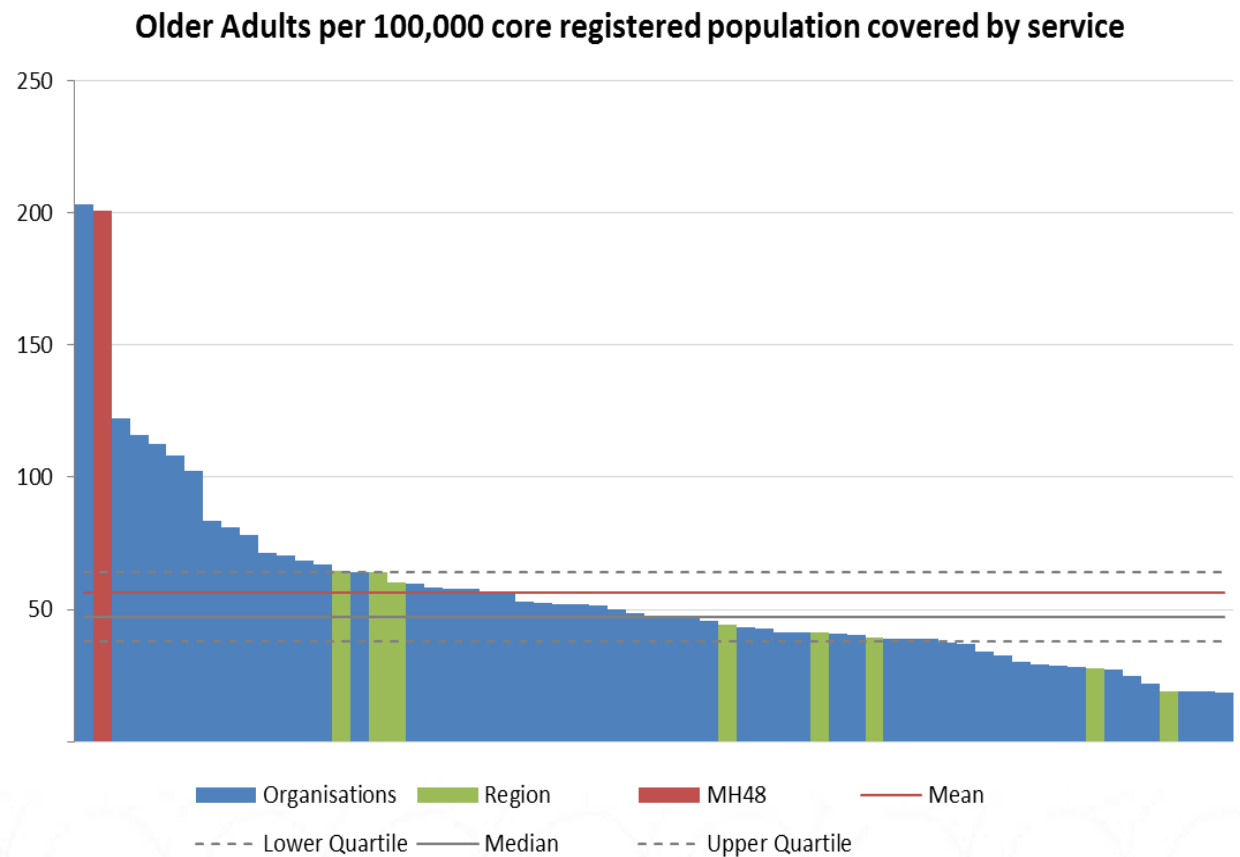
Raising standards
through sharing
excellence



Example benchmarking comparisons

Provision of Older Adult beds per 100,000 population (6% median national reduction)

- 2014/15 median beds = 47 per 100,000 population (65+)
- 2013/14 = 50
- 2012/13 = 60
- London = 62.3 per 100k



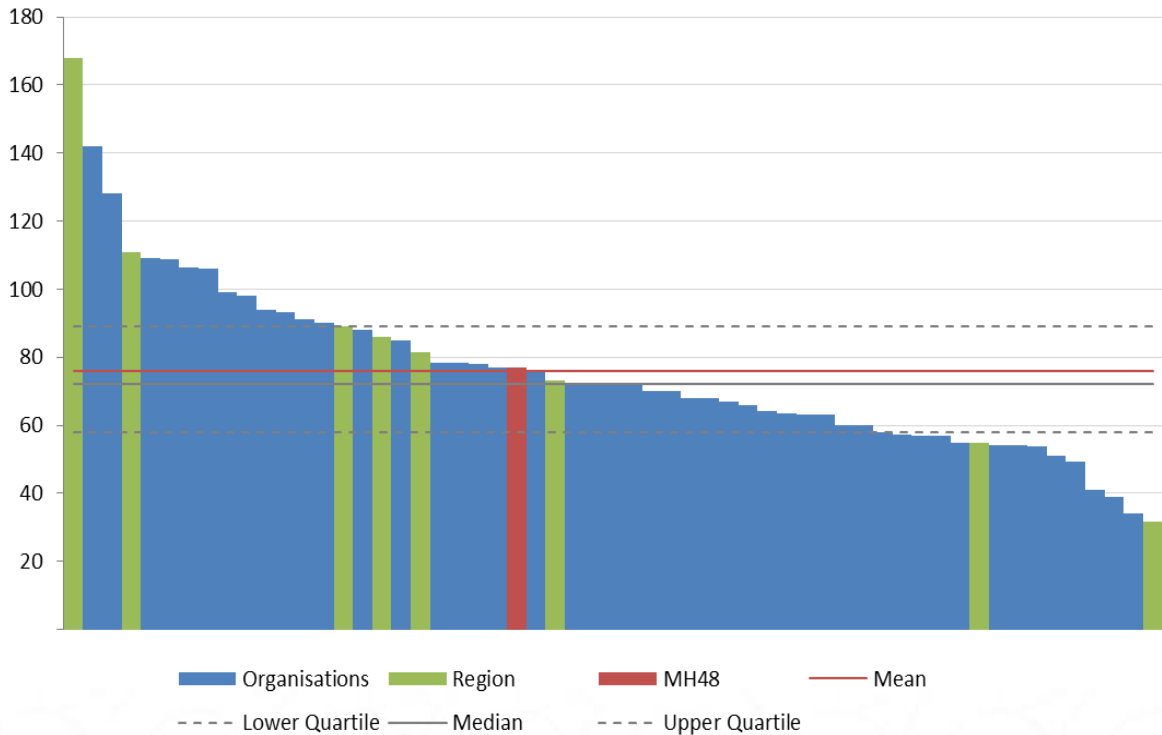
Example benchmarking comparisons

Average Length of stay in Older Adult beds 2014/15 excluding leave (national increase)

- 2014/15 ALOS = 76 days, (72 median)
- 2013/14 = 72 days
- 2012/13 = 67 days

- London = 90 days

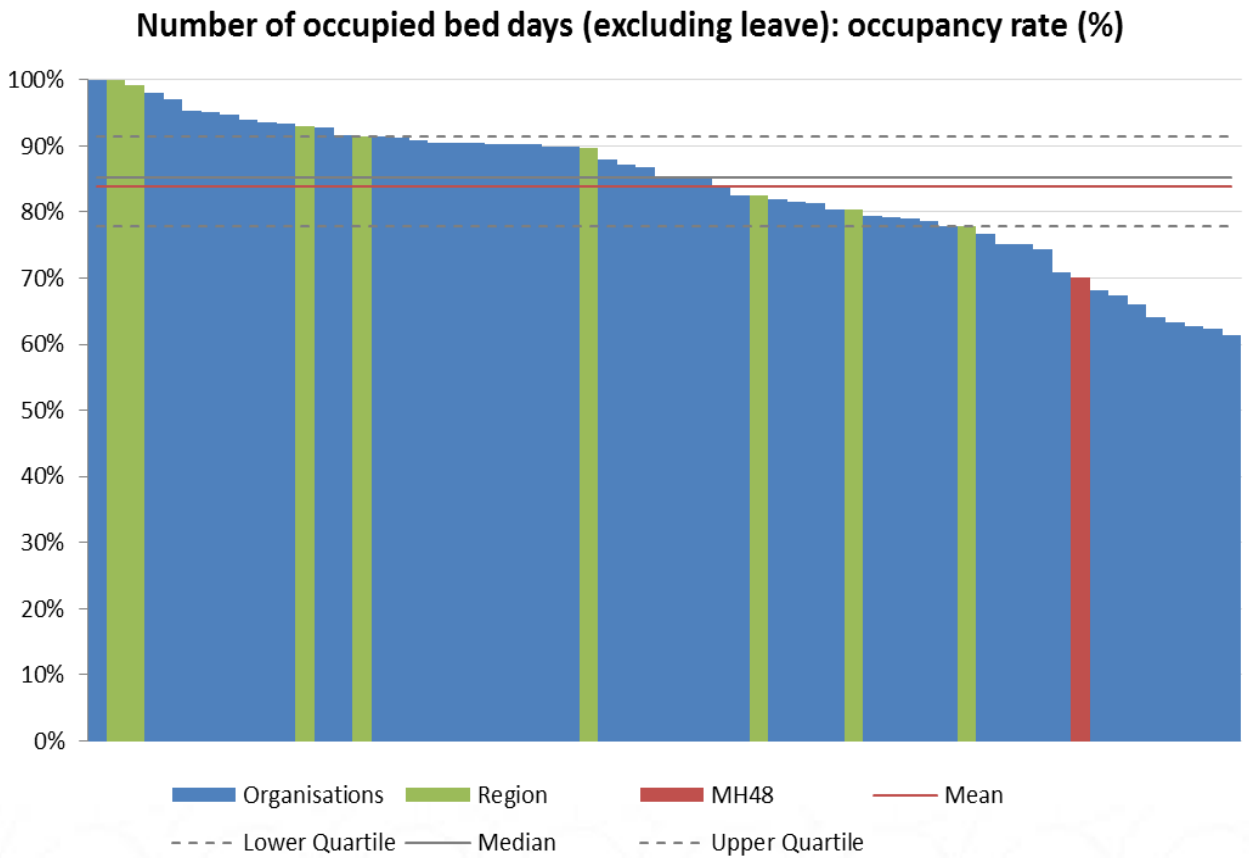
Inpatient Older Adult - ALOS (Excluding Leave) - Mean length of stay:



Example benchmarking comparisons

Bed Occupancy in Older Adult beds 2014/15 (excluding leave)

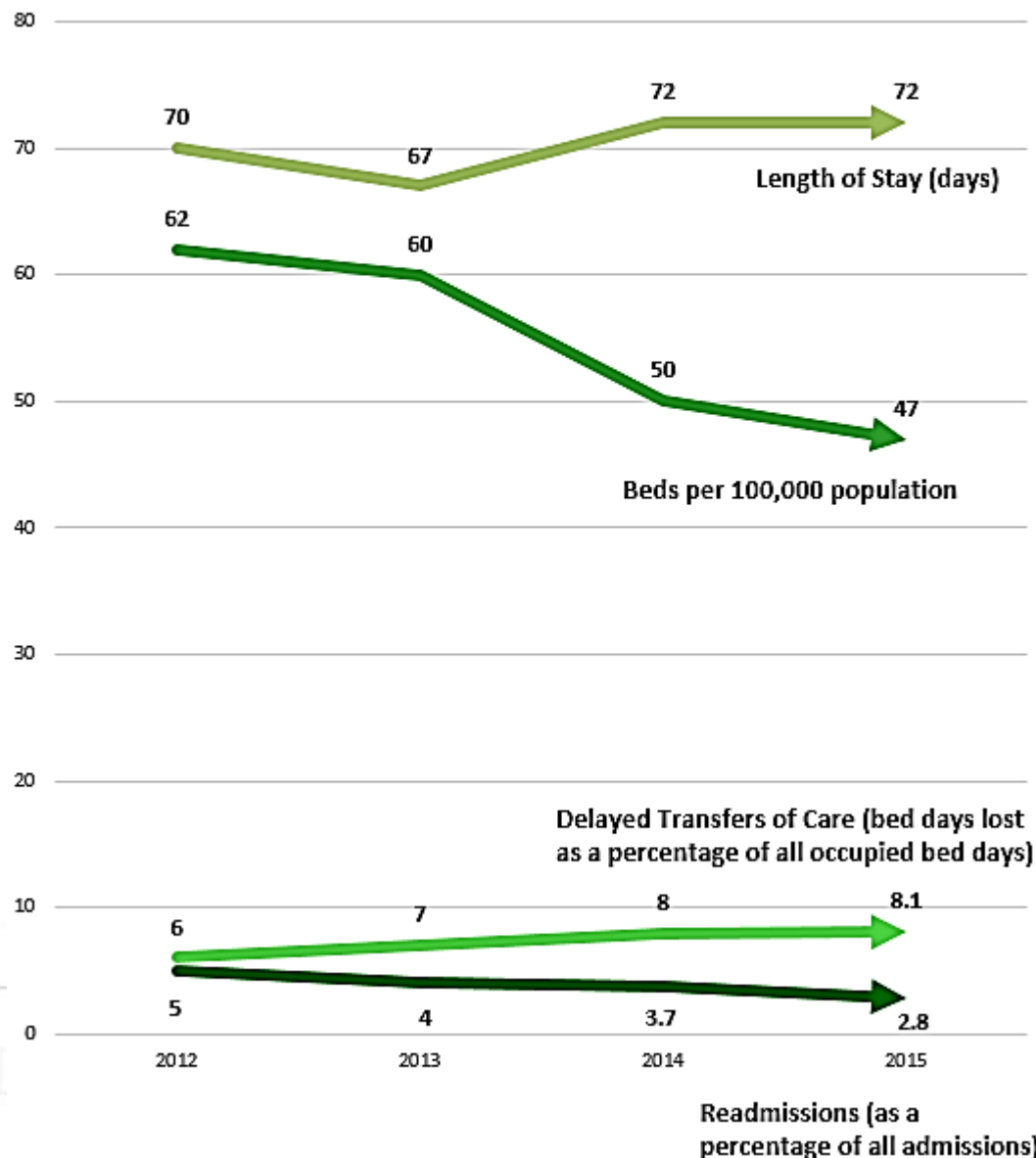
- 2014/15 Older Adult occupancy = 84%
- 2013/14 = 85%
- 2012/13 position = 83%
- Functional (45%) / Organic (55%) split
- London = 87%



Older Adult conclusions

- Fewer beds
- Occupancy static & consistent with RCPsych guidelines
- DTOC pressures
- Readmissions

Older Adult Trends
(Summary: England, Wales and Scotland)
2012 - 2015



Benchmarking Network

Specialist services



Benchmarking Network

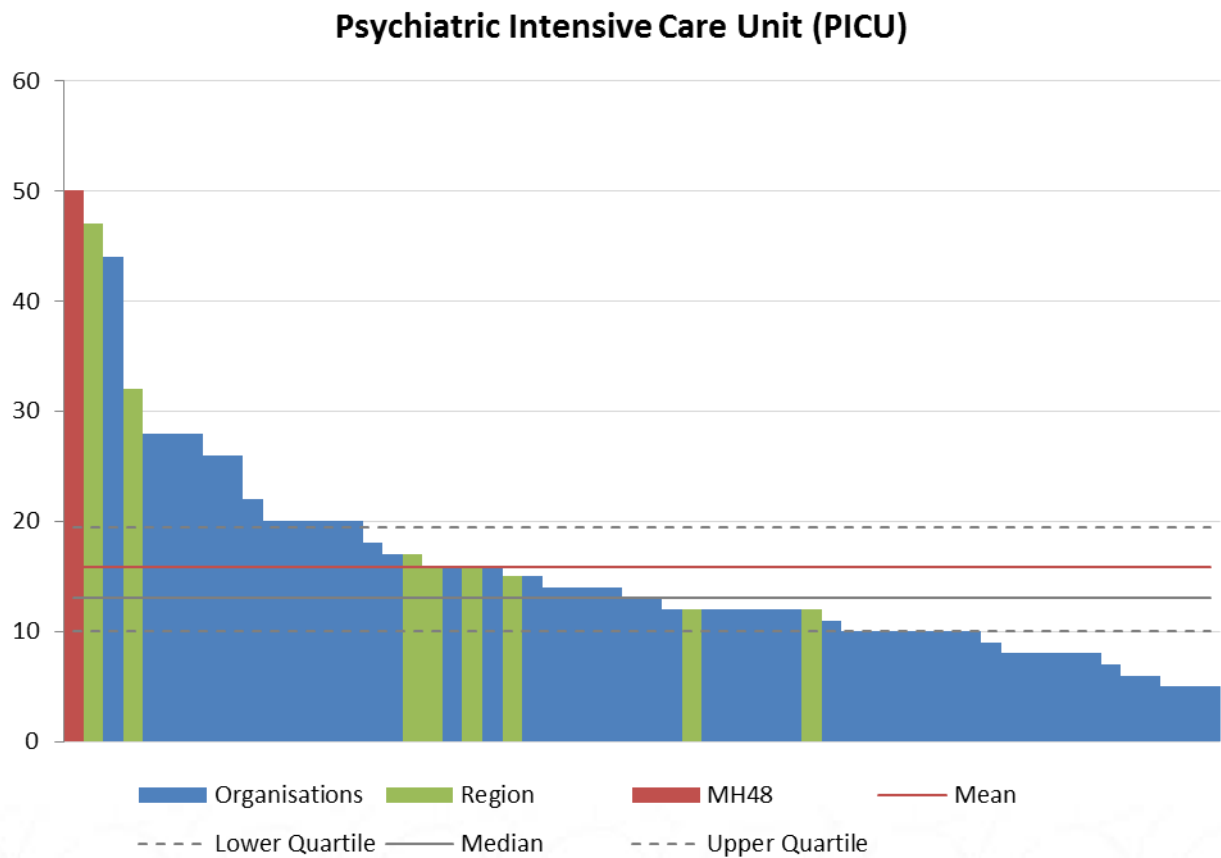
Raising standards
through sharing
excellence



Example benchmarking comparisons

Provision of Psychiatric Intensive Care Unit beds – aggregate (national increase)

- 2014/15 marginal increase in PICU provision
- Chart shows absolute bed numbers provided which average 16 per NHS provider

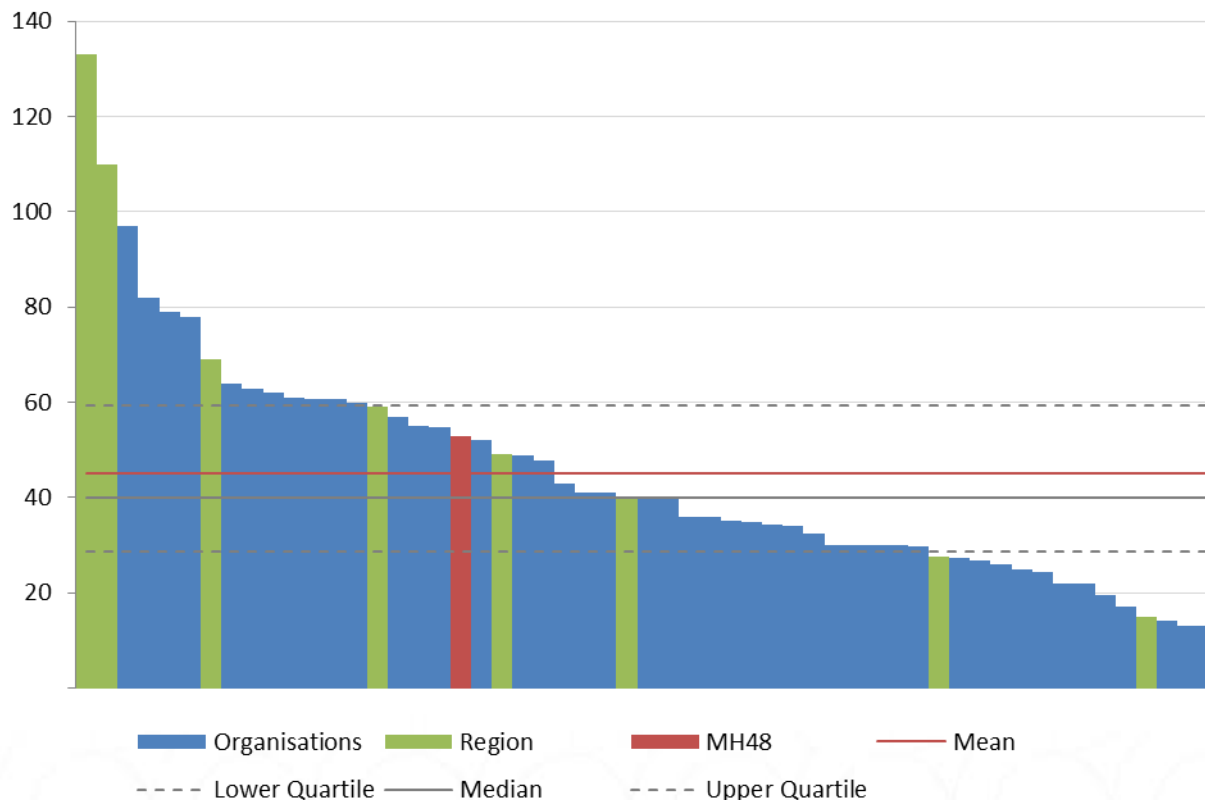


Example benchmarking comparisons

Mean length of stay in Psychiatric Intensive Care Unit beds (national increase)

- 2014/15 PICU average length of stay = 45 days
- 2013/14 PICU = 43 days
- 48 days in 2012/13
- London = 62 days LOS**

PICU 2014/15 Total - Mean length of stay:



Benchmarking Specialist Beds

Profiling average length of stay & workforce

Bed Type	Average length of stay (days)	Consultant Psychiatrist per 10 beds	Total Nursing per 10 beds
PICU	45	0.7	28
Low Secure	594	0.7	17
Medium Secure	548	0.7	20
High Secure	2,450	0.5	21
Eating Disorders	100	0.8	17
Mother and Baby	39	1.2	28
High dependency rehabilitation	409	0.3	14
Longer term complex / continuing care	760	0.3	14



Inpatient workforce



Benchmarking Network

Raising standards
through sharing
excellence

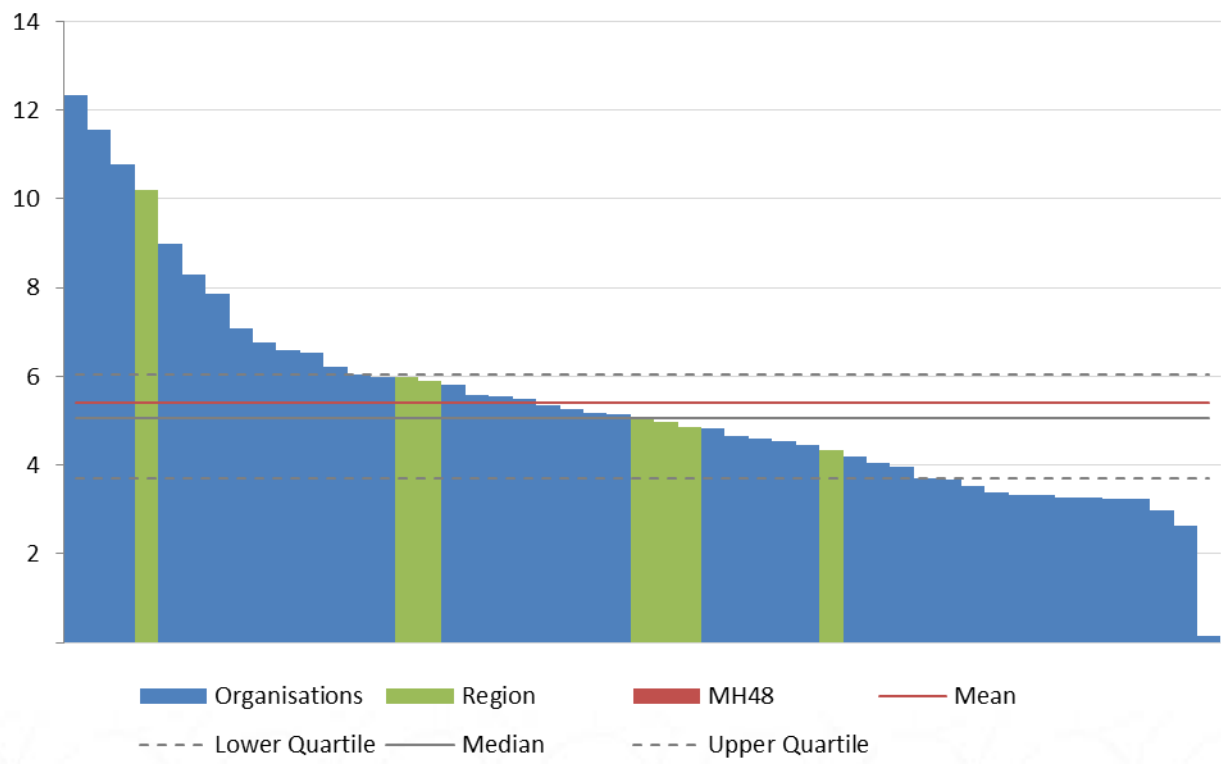


Example benchmarking comparisons

Consultant Psychiatrists per 100 Adult Acute beds

- 2014/15 Consultant Psychiatrists per 100 Adult Acute beds = 5
- No change from 2012/13
- SpRs also average 5 WTE per 100 Adult Acute beds
- London average = 6 WTE per 100 beds

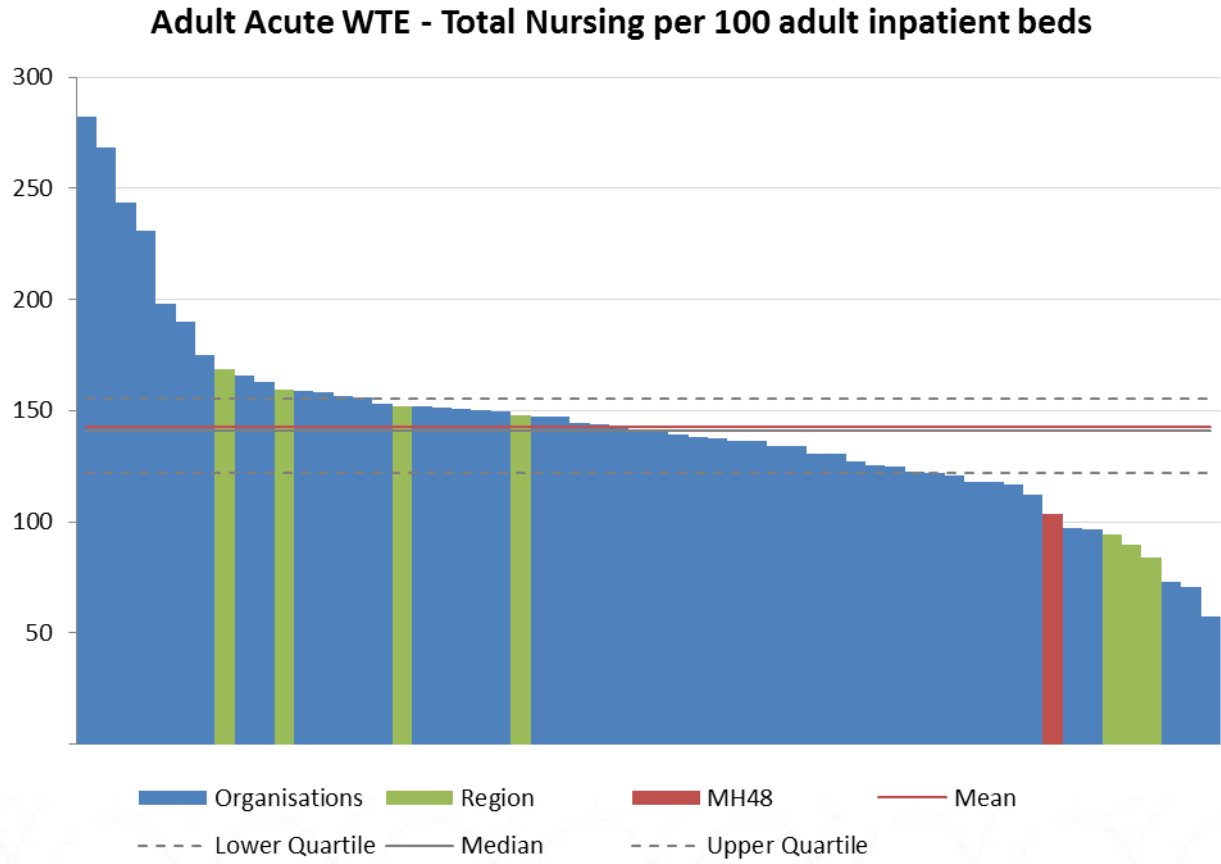
Adult Acute WTE - Psychiatry - Consultant per 100 adult inpatient beds



Example benchmarking comparisons

Nursing staff per 100 Adult Acute beds

- 2014/15 = 142 WTE per 100 Adult Acute beds
- 2013/14 = 140 WTE
- London = 125 WTE per 100 beds



PbR clustering & diagnosis codes



Benchmarking Network

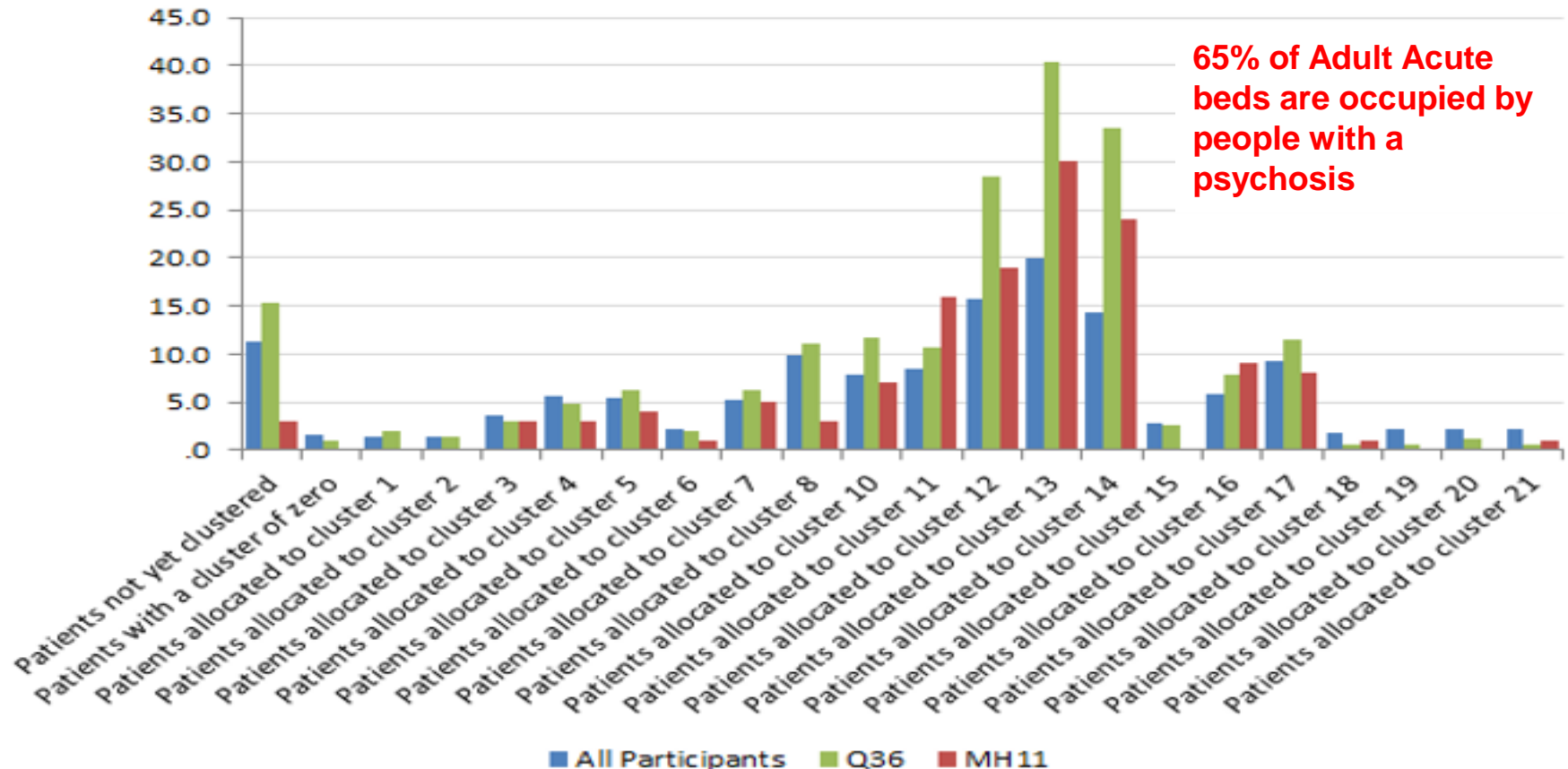
Raising standards
through sharing
excellence



Example benchmarking comparisons

Profile of Trust level PbR patient cluster profiles

Census Cluster Profile - Acute Inpatient



65% of Adult Acute beds are occupied by people with a psychosis



Community services



Benchmarking Network

Raising standards
through sharing
excellence

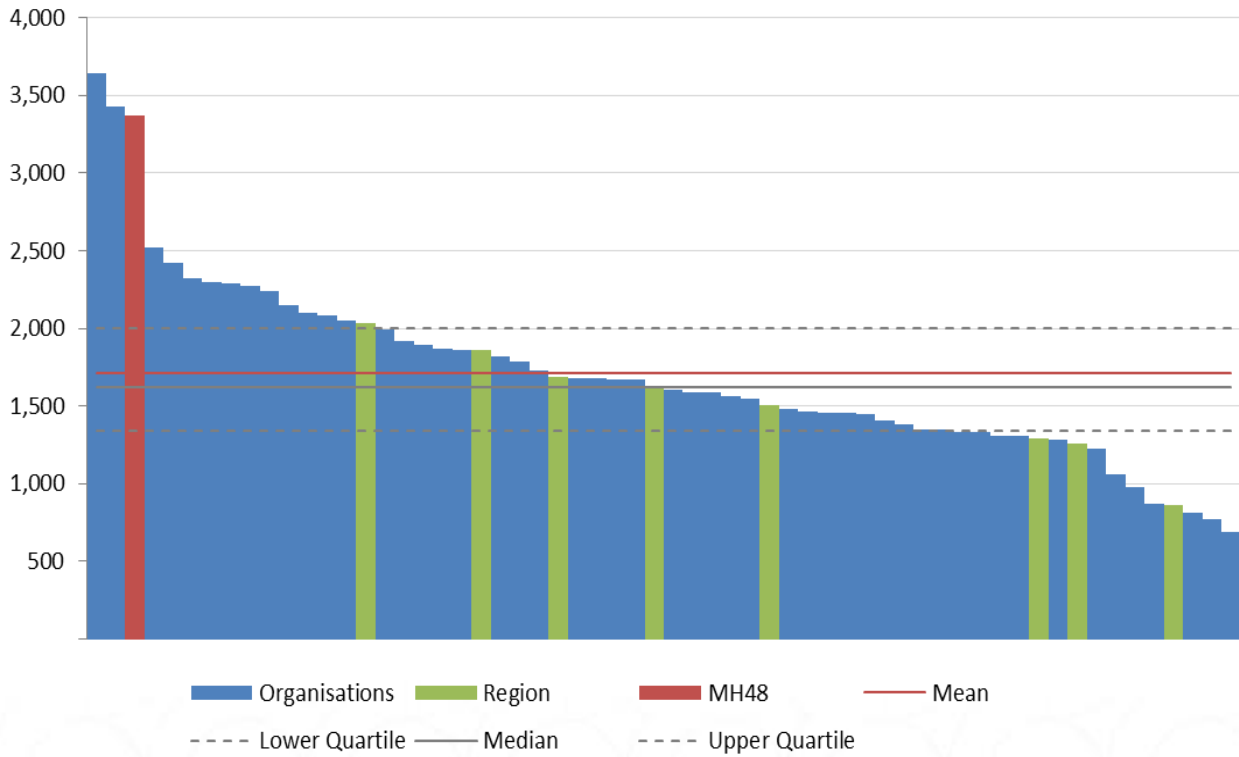


Example benchmarking comparisons

Community Mental Health Teams - Caseloads per 100,000 population 2014/15

All CMHTs - Total caseload for Community Mental Health Teams at census per 100,000 core registered population covered by service

- 2014/15 1,709 caseload per 100,000 population for all CMHTs
- London 1,723 per 100k
- CMHT Referral acceptance rates average 80%

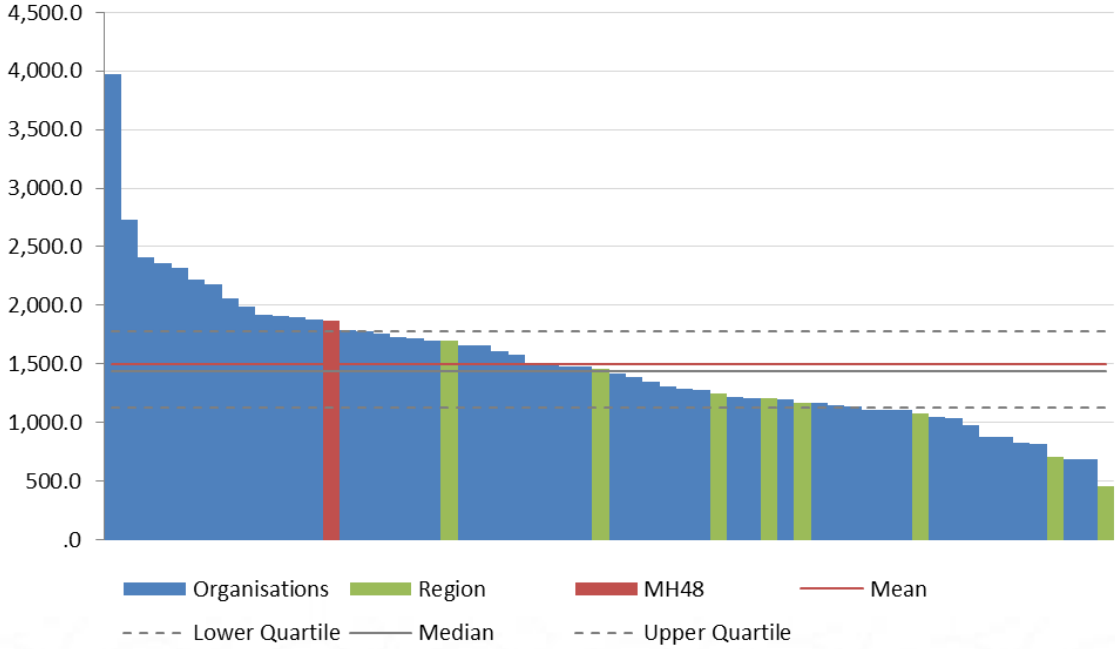


Example benchmarking comparisons

Community Mental Health Teams - Caseloads per 100,000 population 2014/15

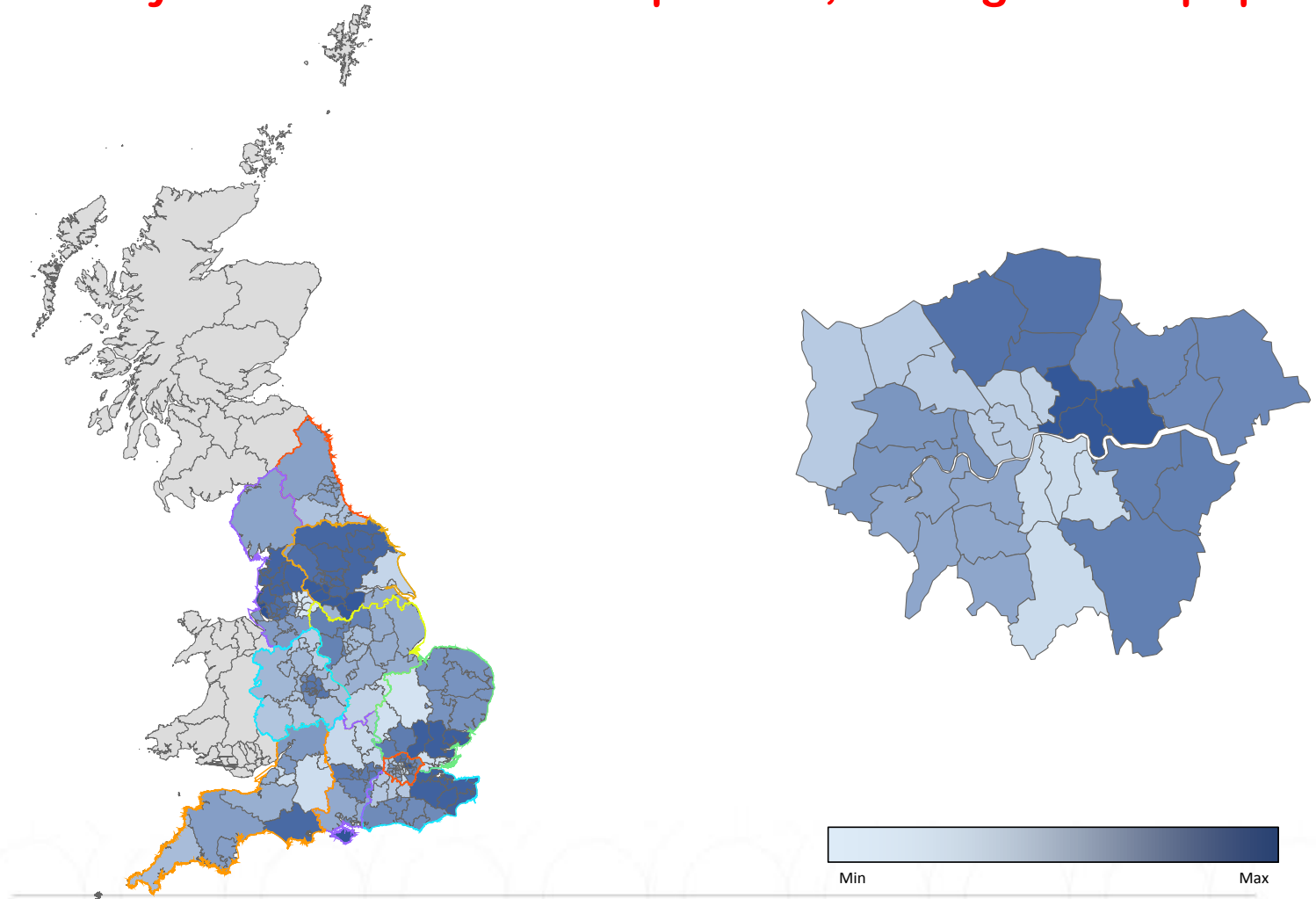
- When a weighted population is applied, London is below average
- National = 1,498 patients per 100k weighted pop
- London 1,210 per 100k weighted pop

All CMHTs - Total caseload for Community Mental Health Teams at census per 100,000 core weighted population covered by service



Map of Variation – Community Caseloads

Community MH Team caseloads per 100,000 registered population

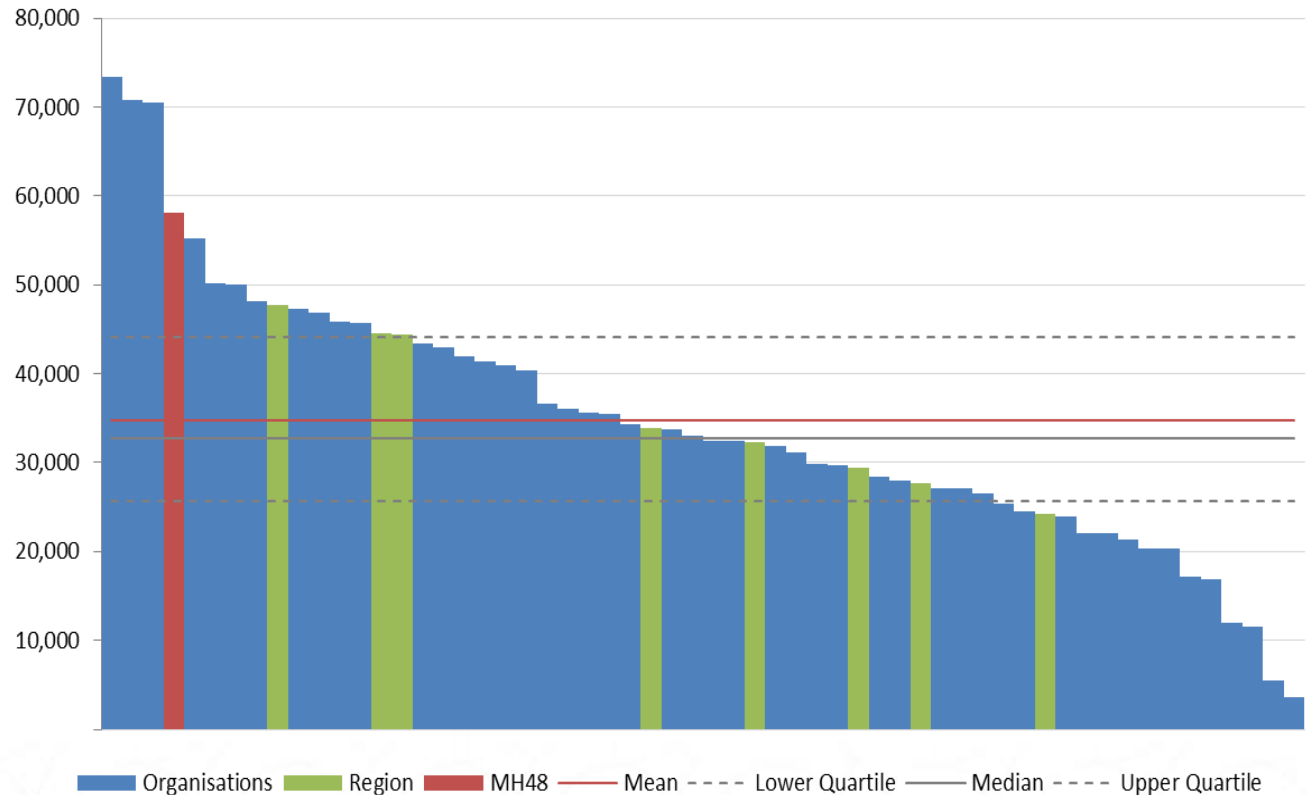


Example benchmarking comparisons

Community Mental Health Teams - Contact levels per 100,000 population 2014/15

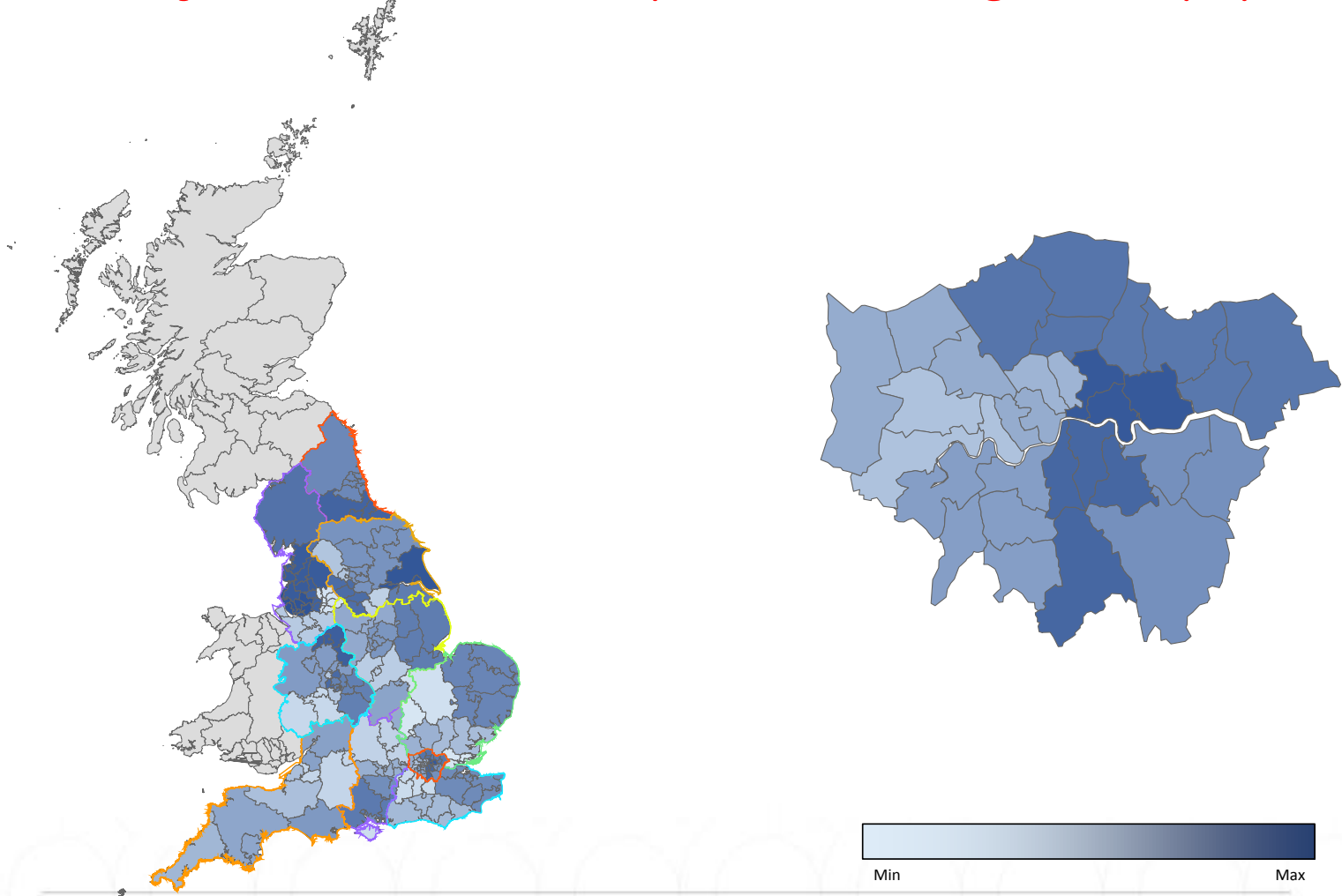
All CMHTs - Total contacts 2014/15 per 100,000 registered population

- 2014/15 = 34,707 mean contacts per 100,000 population for all CMHTs
- London = 38,027
- 76% are face to face contacts



Map of Variation – Community Contacts

Community MH Team contacts per 100,000 registered population



Benchmarking Network



Benchmarking Waiting Times

Waiting times for community MH services

Bed Type	Emergency appt (days)	Routine apt – average wait (weeks)	Routine apt av – longest wait (weeks)
Generic CMHT	12	5	30
CRHT	<1	<1	4
Assertive Outreach	14	4	14
Early Intervention	5	2	9
Assessment & Brief Intervention	6	3	13
Eating Disorders	18	6	12
Mother and Baby	20	5	18
Older People	6	2	29
Memory Services	5	6	19

Finance



Benchmarking Network

Raising standards
through sharing
excellence



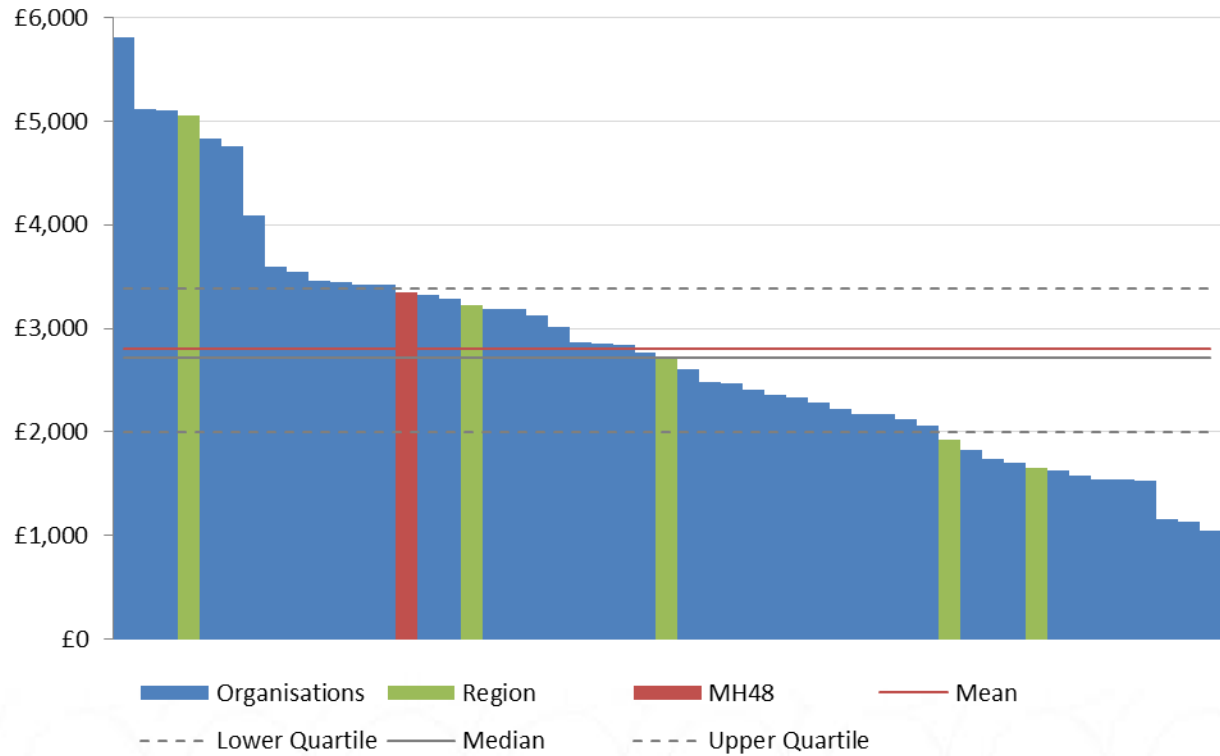
Example benchmarking comparisons

Community Mental Health Service Costs

Annual cost per service user on CMHT caseload 2014/15

- CMHT cost per service user on caseload 2014/15 = £2,816
- £193 per face to face contact

Generic CMHT - Total costs including allocation of overheads and corporate costs 2014/15 per patient on caseload

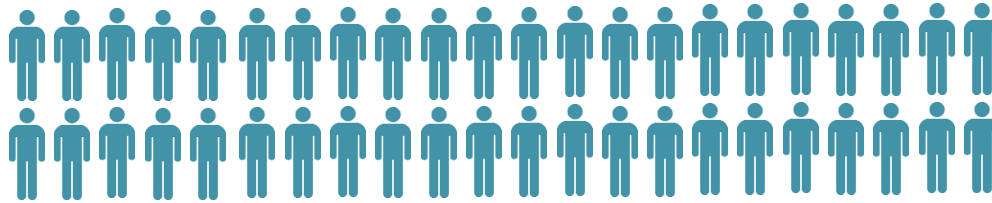


Benchmarking Beds

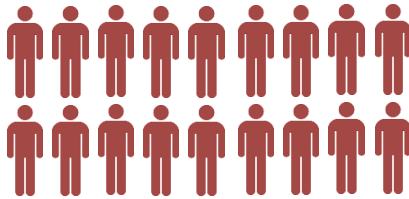
Profiling inpatient costs

Bed Type	Average cost per admission £	Average cost per bed per annum £
Adult Acute	£11,300	£126,000
Older Adult	£32,000	£136,000
PICU	£37,000	£218,000
Low Secure	£346,000	£143,000
Medium Secure	£394,000	£172,000
Eating Disorders	£50,000	£160,000
Mother and Baby	£35,000	£199,000
High dependency rehabilitation	£194,000	£111,000
Longer term complex / continuing care	£435,000	£113,000

Economic comparisons



1 adult acute bed
= 44 patients on
a CMHT caseload



1 adult acute bed
= 18 patients on an EIP team caseload



1 older adult bed
= 35 patients on an
older adult CMHT
caseload



Safety and quality



Benchmarking Network

Raising standards
through sharing
excellence



Service quality comparisons

Benchmarking service quality

- Most service delivery quality metrics show improvement in 2014/15

Indicator	Incidents per 100,000 bed days 2014/15	Incidents per 100,000 bed days 2013/14
Serious incidents	72	79
Medication incidents	364	373
Seclusion	158	198
Violence to patients	289	293
Violence to staff	590	597



Example benchmarking comparisons

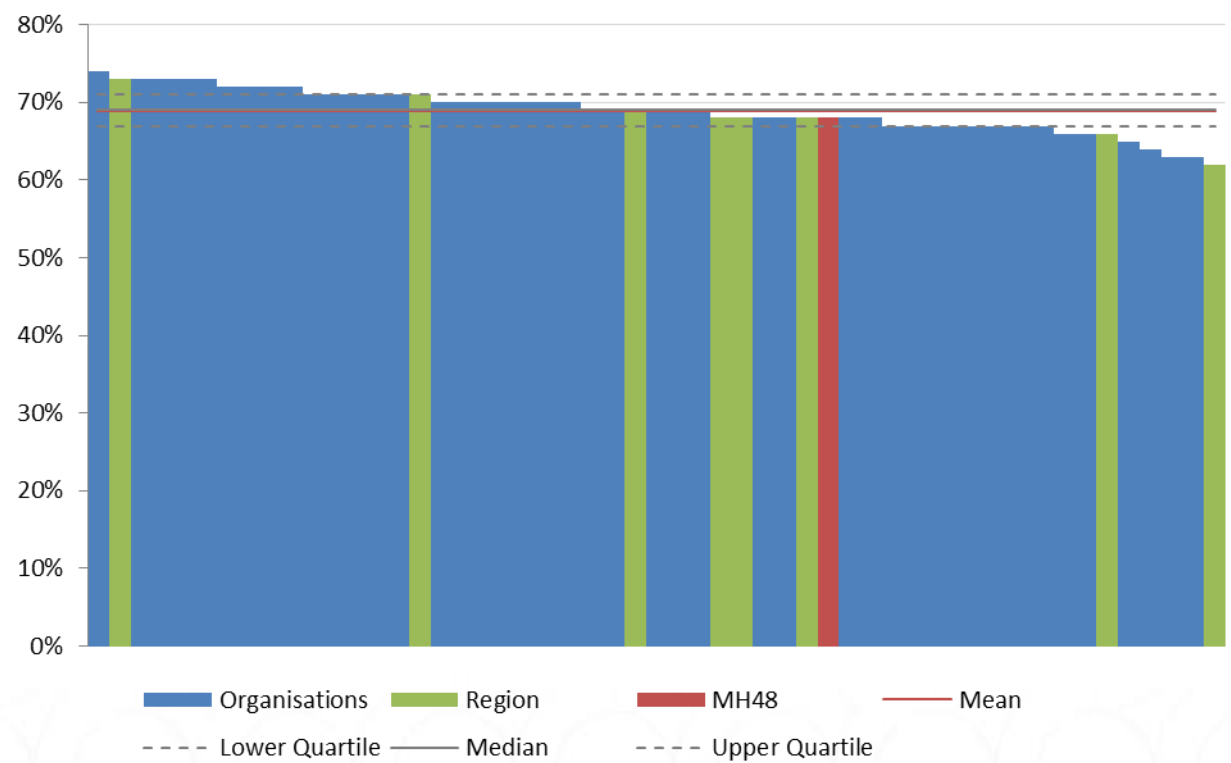
Benchmarking service quality – illustrative example

CMHT patient satisfaction rate 2014/15

- 2014/15 = 69% service user satisfaction
- 2013/14 = 73%
- 2012/13 = 70%

- London = 68%

Quality Outcome Measures - CQC satisfaction score for CMHT patient survey



Example benchmarking comparisons

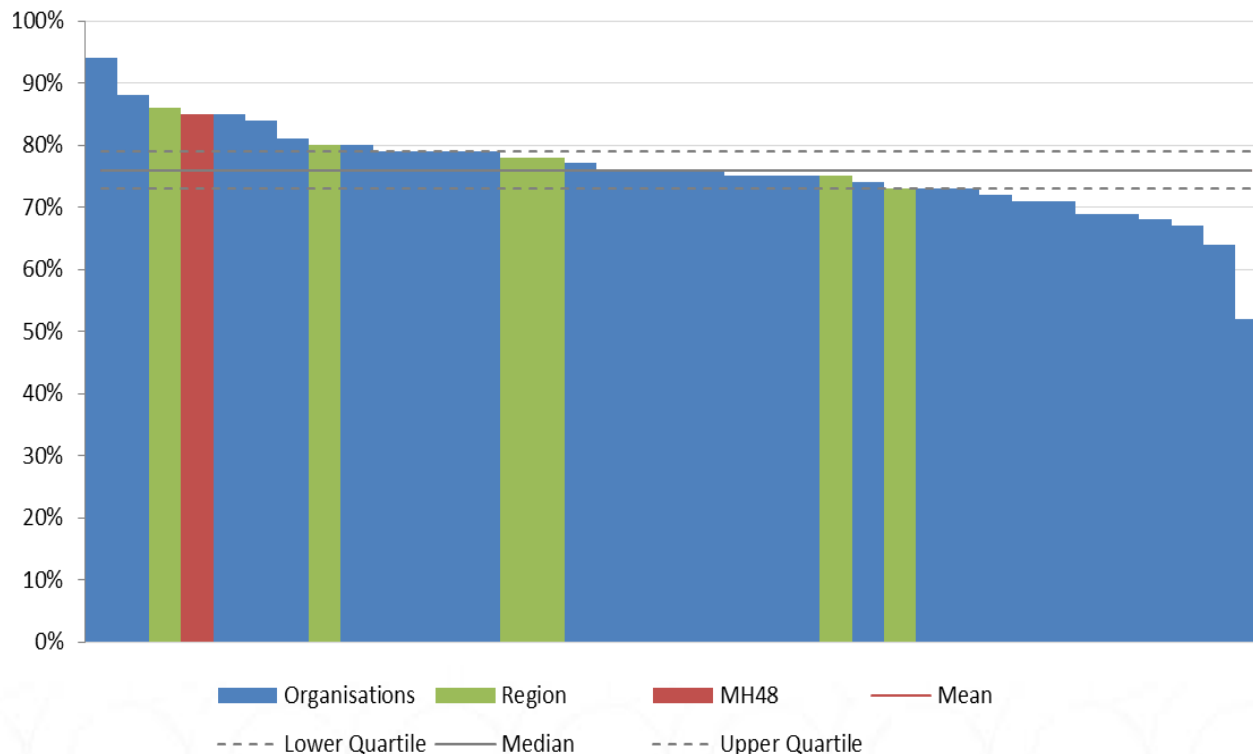
Benchmarking service quality – illustrative example

Staff satisfaction rate 2014/15

- 2014/15 = 76%
- 2013/14 = 76%
- 2012/13 = 74%

- London = 79%

Quality Outcome Measures - NHS Staff Survey results % feeling satisfied with the quality of work and patient care they are able to deliver



Benchmarking Network



Balance of Care



Benchmarking Network

Raising standards
through sharing
excellence

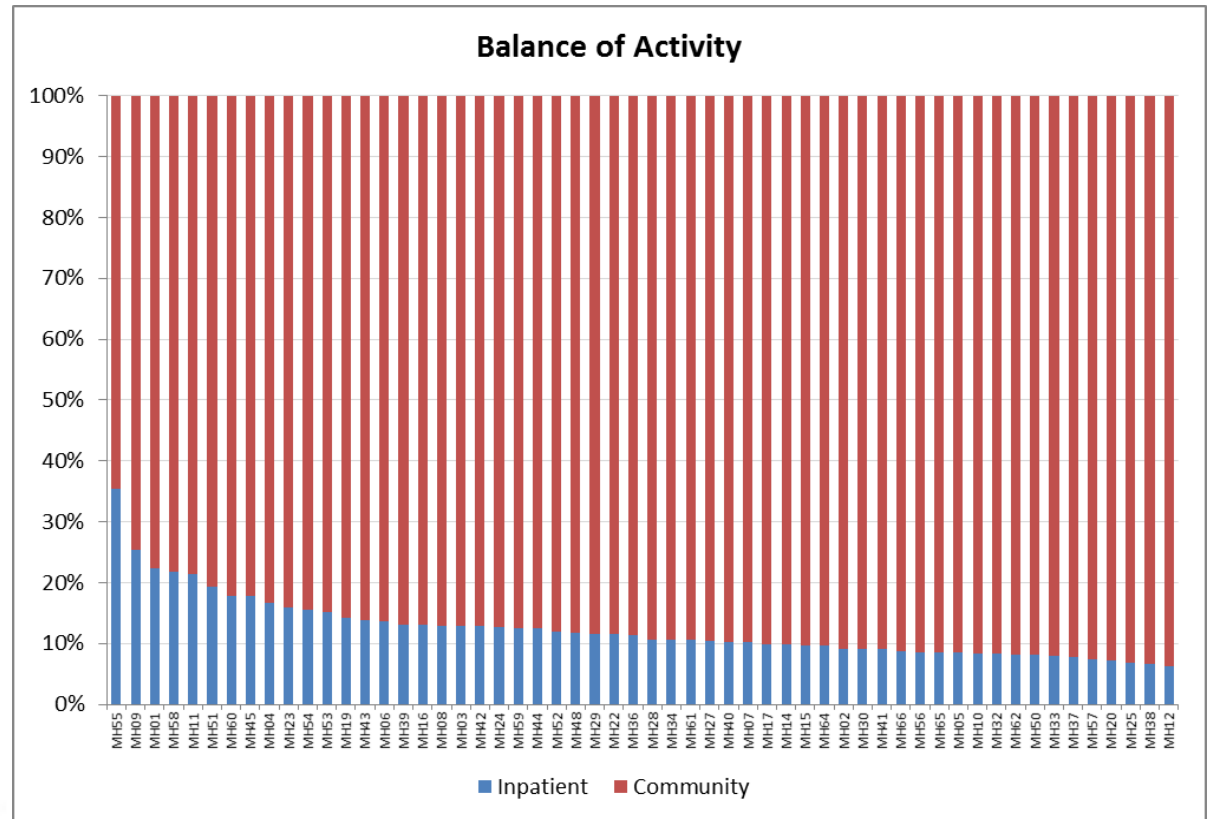


Example benchmarking comparisons

Benchmarking the balance of care between bed and community

Activity – admissions versus community caseload

- 2014/15
- Inpatient median = 11%
- Community median = 89%
- Same position as last year

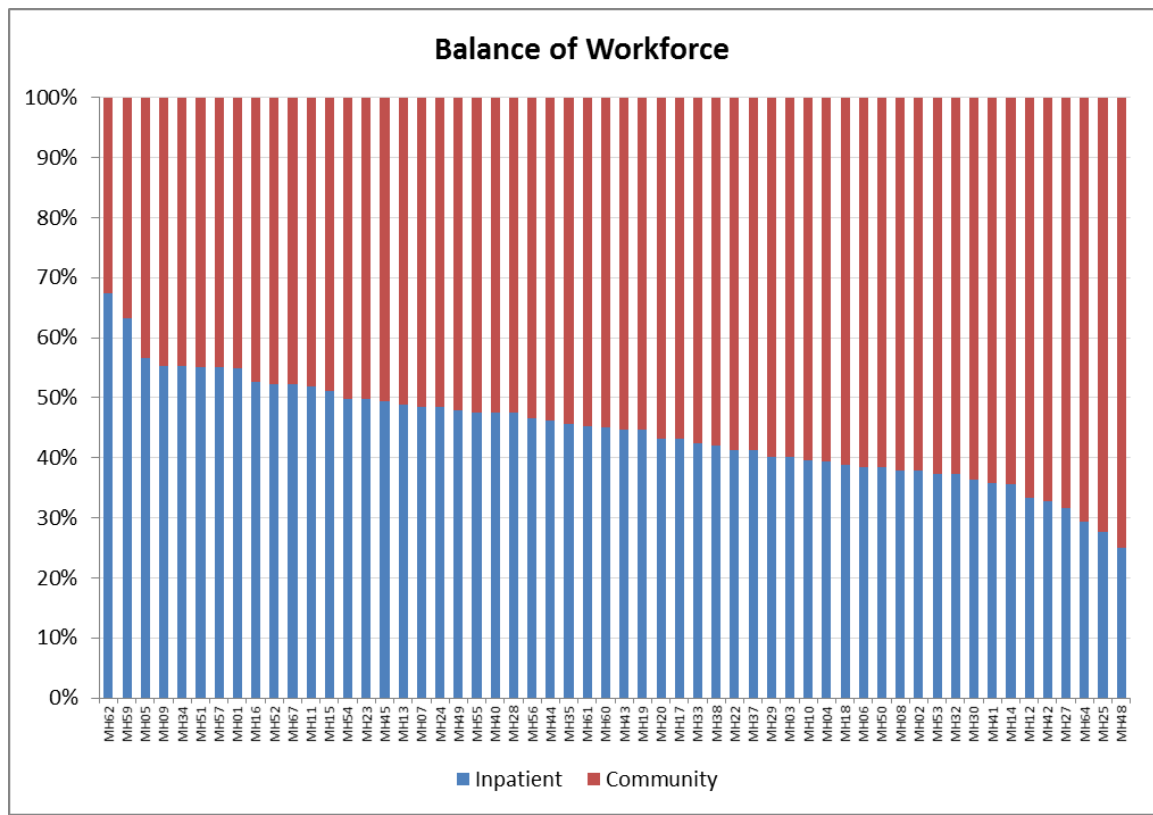


Example benchmarking comparisons

Benchmarking the balance of care between bed and community
Workforce

- 2014/15
- Inpatient median = 46%
- Community median = 54%
- Change from 2013/14 driven by Safer Staffing

Finance
Inpatient = 49%
Community = 51%



Reports



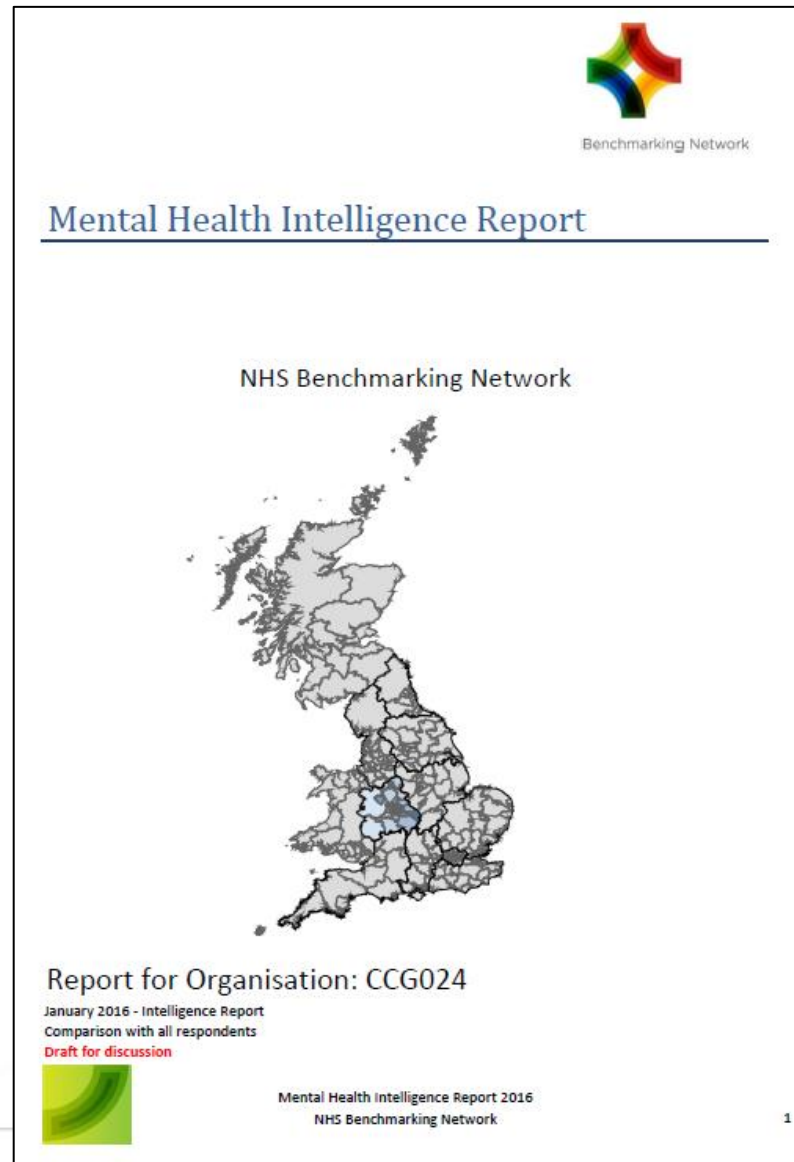
Benchmarking Network

Raising standards
through sharing
excellence



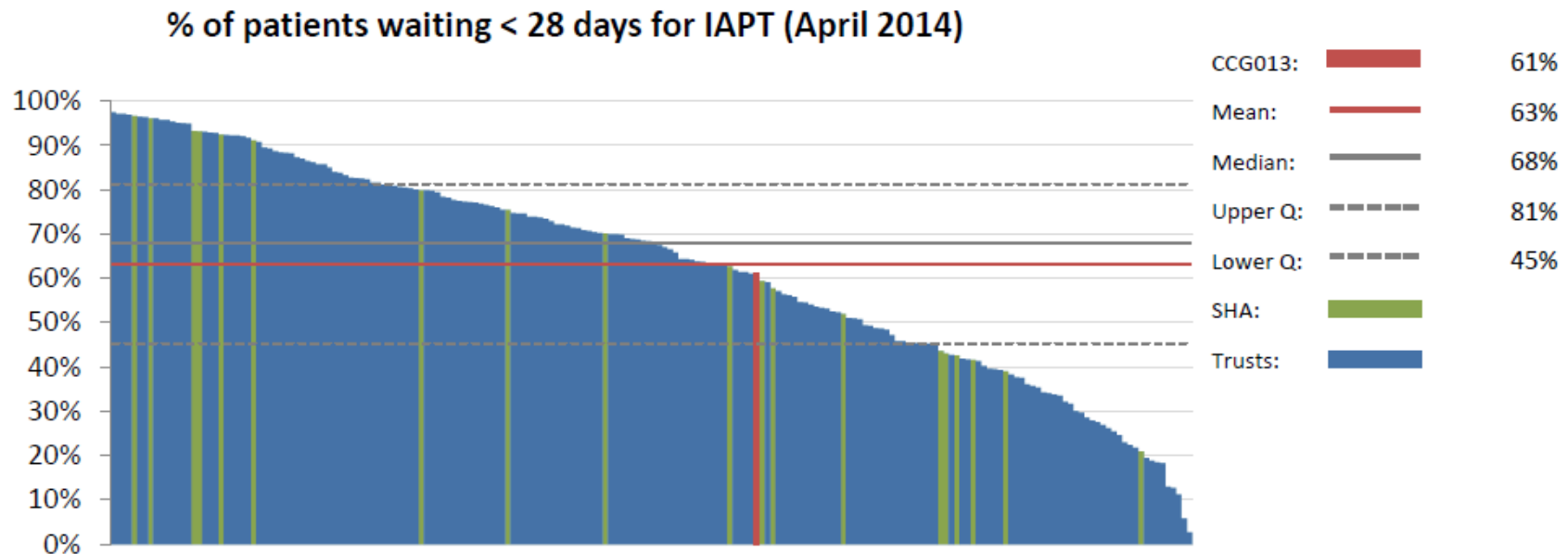
Reports

- Bespoke reports for each CCG



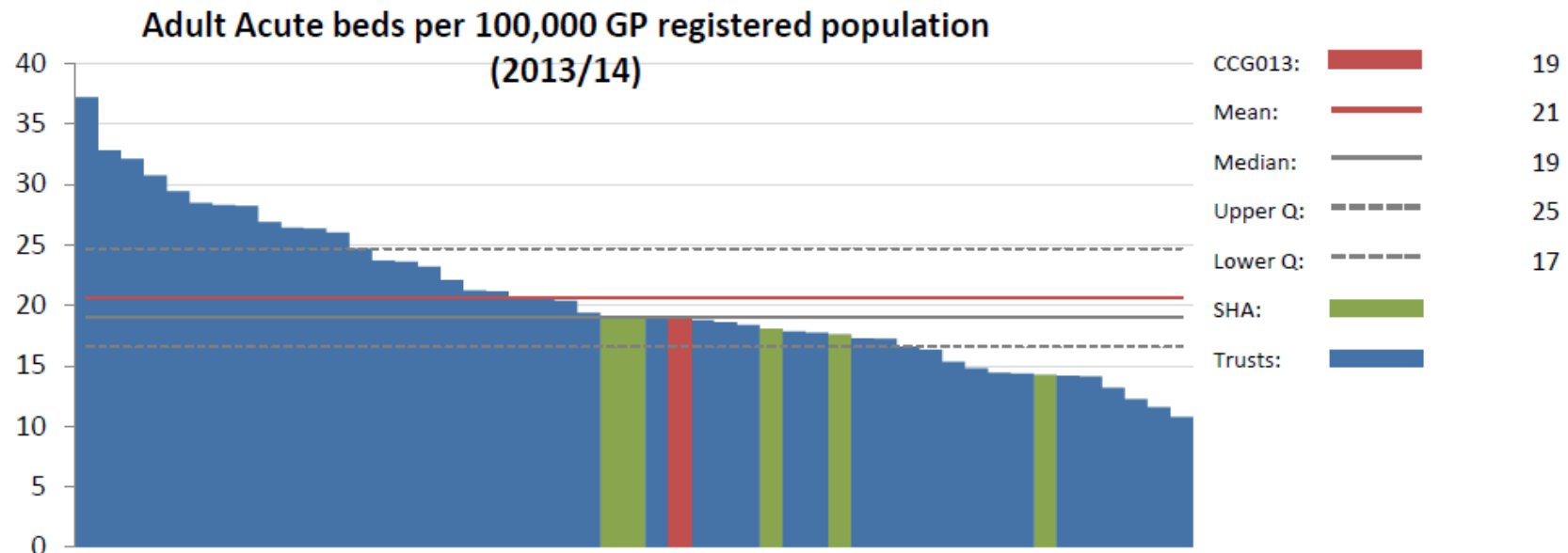
Reports: Part A

- Individual, CCG level data
- Compares CCGs with others in same region e.g. London



Reports: Part B

- Mental Health Trust level data
- CCGs mapped to their main provider Trust
- Compares Trusts with others in same region e.g. London



Now available to download from:

www.nhsbenchmarking.nhs.uk/masterclass

zoe.page@nhs.net

s.watkins@nhs.net



Benchmarking Network



Thank You



Benchmarking Network

Raising standards
through sharing
excellence

