

UNIVERSITY OF  
BIRMINGHAM



**Community Day programme**  
Sunday 19 June 2011  
11.00am–4.00pm

# Come and explore your local university

Sunday 19 June – 11.00am–4.00pm





## What's on, where?

- P4 Chancellor's Court**  
hydrogen cars, mini gym, health research bus and golfing
- P5 University Square**  
fun fair, refreshments, games, stalls and market
- P5 Marquee**  
wind and brass bands
- P5 Muirhead Tower**  
tours, arts and exhibitions
- P6 Lapworth Museum of Geology**  
dinosaurs, fossils, volcanoes and monsters
- P6 Barber Institute of Fine Arts**  
tours, arts and crafts
- P7 Winterbourne House and Garden**  
chickens, string quartet, gardens and shop
- P7 Guild of Students**  
drama, dance and performances, games, arts and crafts
- P10 Aston Webb lecture theatres**  
science, debate, interactive lectures
- P12 Great Hall**  
explore medicine, black holes, exhibitions, information, games and activities



## In detail\*

### Aston Webb reception

#### What's on?

##### Information point

- Find out more about becoming a student at Birmingham
- Lost children point – arrange to meet here
- St John's Ambulance
- Find out more about the venues we have on offer for weddings and parties
- Winterbourne House and Garden – information point
- Local charities with links to the University will be displaying information and advice

### Chancellor's Court

What's on?	What age?	What time?
<b>Health Research Bus</b> Get a look at our bus which brings researchers to you	All ages	All day
<b>Cancer Awareness Bus</b> Step inside to find out how to lead a healthier life and reduce the risk of cancer	All ages	All day
<b>Hydrogen cars</b> Take a ride in our fleet of hydrogen-powered cars	All ages	All day
<b>Fun and fit</b> Young children can enjoy our mini gym equipment to help develop their agility and co-ordination	5 and under	All day
<b>Bramall Building time capsule ceremony</b> Add your signature or handprint to our time capsule as it is buried by our newest development	5+	2.30pm
<b>Golf swing analysis</b> Analyse your swing and receive putting instruction	All ages	All day

### Aston Webb Rotunda

What's on?	What age?	What time?
<b>Painted by Rust</b> See Brigitte Winsor's stunning exhibition, 'Empire of Rust'	All ages	All day

\*some activities may be subject to change

## University Square

What's on?	What age?	What time?
<b>Fun Fair</b> A climbing wall, helter skelter and lots more	All ages	All day
<b>Windsurf Simulator</b>	10+	All day
<b>Build an egg throwing machine</b>	10+	All day
<b>See the Beech Boys' rowing boat</b> Father and son team – the Beeches – will be displaying the rowing boat used to row the Atlantic	All ages	All day
<b>Birmingham City FC</b> Come and join in a game of football with one of Birmingham's Premier League teams	Children	All day
<b>Young Enterprise Stalls</b> Local schools will be selling their business products created as part of the Young Enterprise initiative	All ages	All day
<b>Free cycling</b>	All ages	All day
<b>Farmers' and crafts market</b> Enjoy local, fresh produce, arts and crafts	All ages	All day
<b>Fairtrade stand</b> Chocolate, fashion and all things fairly traded	All ages	All day

## Chancellor's Court Marquee

What's on?	What age?	What time?
<b>Summer Festival Wind and Brass bands</b> Relax in our marquee and enjoy the sumptuous sounds of two of our University bands	All ages	All day

## Muirhead Tower

What's on?	What age?	What time?
<b>On the Suburban Front</b> An exhibition on the heritage and history of the suburbs of West Birmingham	All ages	All day
<b>Survivor Arts exhibition</b> An exhibition of work produced by survivor artists and Social Work students to aid their recovery through arts	All ages	All day



## Lapworth Museum of Geology

What's on?	What age?	What time?
<b>Dinosaur dig</b> Dig for dinosaurs in our mini excavation	Children	All day
<b>Know your gold from your gems?</b> Competitions, quizzes and puzzles with a geological theme	All ages	All day
<b>Can you outwit a volcano?</b> Explore volcanic activity and witness a small scale explosion!	All ages	All day
<b>Explore the treasures of the Lapworth Museum of Geology</b> Take a closer look at some of the outstanding objects in the collections with students and staff from the museum	All ages	All day
<b>Under the Microscope: Exploring Ancient Microscopic Worlds</b> An interactive demonstration with the opportunity for people to use microscopes to explore the wide range of ancient microscopic organisms	All ages	All day
<b>Make your own marine monster</b> A chance for children to make their own replica fossils from moulds and plaster of paris	Children	All day

## Barber Institute of Fine Arts

What's on?	What age?	What time?
<b>Beyond the surface</b> Dance, film and spoken word performances throughout the day, inspired by the Barber's collection of fine art	All ages	All day

## Media Centre

What's on?	What age?	What time?
<b>Become an actor!</b> Two actors from the BBC's <i>Doctors</i> will act with you in your very own drama!	6+	All day
<b>Filmmaking display</b>	All ages	All day





## Winterbourne House and Garden

What's on?	What age?	What time?
<b>String quartet on the terrace</b> Take in the surroundings and enjoy soothing string music	All ages	All day
<b>Old Kitchen</b> Kids can have a go at old fashioned washing and crafts	Children	All day
<b>Meet the Winterbourne Chickens</b>	All ages	All day
<b>Live-action performances of the Nettlefold family</b> Our drama students will be in costume to bring the House alive	All ages	All day

Access to Winterbourne House, café and terrace is free during Community Day\*  
\*There will be a small £1 charge for adults to enter gardens

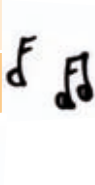
## Guild of Students – performances in the Deb Hall

What's on?	What age?	What time?
<b>Article 19</b> Montage of excerpts from productions, to include Red, Angel and Pitchfork	All ages	11.30– 11.50am
<b>Birmingham Dance Squad (BUDS)</b> Award winning dance squad will be performing a competition piece	All ages	12.10– 12.30pm
<b>Guild Musical Theatre Group</b> Musical theatre showcase	All ages	1.00– 1.20pm
<b>Ballroom and Latin Society</b> Dance showcase	All ages	1.40– 2.00pm
<b>Battle reenactment society</b> Historical battle showpiece	All ages	2.30– 2.50pm
<b>Bhangra</b> Winners of 'Best Bhangra Team in the UK' will be performing	All ages	3.10– 3.20pm
<b>Dance Club latino</b> Salsa workshop	All ages	3.50– 4.10pm



## Guild of Students – Workshops in the Amos room

What's on?	What age?	What time?
<b>Bharat Parivar</b> Saree workshop	All ages	11.50am– 12.10pm
<b>Birmingham Dance Squad (BUDS)</b> Belly dancing workshop	All ages	12.40– 1.00pm
<b>Watch This!</b> Improvisation games	All ages	1.20– 1.40pm
<b>Ballroom and Latin Society</b> Waltz and cha-cha-cha workshop	All ages	2.10– 2.30pm
<b>Purple Mermaid</b> Circus Skills	All ages	2.50– 3.10pm
<b>Bhangra</b> Dance skills workshop	All ages	3.30– 3.50pm
<b>Dance Club latino</b> Salsa workshop	All ages	4.20– 4.40pm



## Other Guild activities

What's on?	What age?	What time?
<b>Sons of Pitches (A'capella Society)</b> Will be performing some of their show-stopping hits	All ages	All day
<b>Kids Adventures</b> Face painting, make a Father's Day card, parachute games and puppets	All ages	All day
<b>Purple Mermaid</b> Balloon animals	All ages	All day



## Refreshments

What's on?	Where?
<b>Food and drink in the square</b> You can bring your own food but if you want to buy we have everything you need, including a barbecue!	University Square
<b>Farmers' market</b> Enjoy local, fresh produce and hot food	University Square
<b>Refreshment stand</b> With a fully stocked café, ice creams and popcorn	Chancellor's Court marquee
<b>Bratby bar</b> Fully stocked bar, light snacks and hot carvery lunch	Bratby Bar, Staff House
<b>Café Aroma</b> Snacks, sandwiches, cake and drinks	Café Aroma, 1st floor, Staff House
<b>Winterbourne tea rooms</b> Hot and cold snacks and drinks	Winterbourne House
<b>Hornton Grange carvery lunch, served from 12.00 noon–2.30pm</b>	Hornton Grange
<b>Baby feeding area</b>	Café Aroma, Staff House



## Timed Lectures

### Aston Webb Lecture Theatre – WG05

What's on?	What age?	What time?
<b>Eating for gold</b> Examining human performance based around the Olympics	10+	12.00 noon– 12.30pm
<b>You are what you run</b> Examining human performance based around the Olympics	10+	12.45– 1.15pm
<b>Are you hot or cold?</b> Watch our lead scientist from the Large Hadron Collider at CERN as he demonstrates temperature, from absolute zero to the core of the sun!	8+	1.30– 2.00pm
<b>Mini Question Time</b> Just like <i>Question Time</i> , you can quiz a panel of local MPs and decision makers about the issues that matter to you	All ages	2.15– 3.00pm
<b>The new Bramall Building</b> Find out more about our latest development, such as the history of the building, architects' designs and plans for the new facility	10+	3.15– 4.00pm

### Aston Webb Lecture Theatre – WG12

What's on?	What age?	What time?
<b>It's good to talk</b> An introduction to the free Birmingham Speakers Programme, with a lucky dip of speakers	16+	12.00 noon– 12.30pm
<b>What can go wrong with your joints and what can be done about it?</b> Find out how joints work, recent advances in the treatment of joint problems here in Birmingham and, see ultrasound scans of your joints	12+	12.45– 1.15pm
<b>Stem cells: the debate</b> What are stem cells, what can they do, why should we use them and how will they change lives? Join this lively debate to find out more...	13+	1.30– 2.00pm
<b>Hydrogen storage: fuel tanks for the future</b>	12+	2.15– 2.45pm
<b>Fuel for thought</b>	12+	3.00– 3.45pm

### Muirhead Tower Lecture Theatre – G15

What's on?	What age?	What time?
<b>Lecture – A Creative Approach to the Challenges of the Digital Medium</b>	16+	2.00– 2.30pm
<b>Lecture – Aesthetic Anarchy or Radical Replacement: Did Dada Seek to Save the Self?</b>	16+	2.45– 3.15pm

## Tours around campus – information

Meet in Aston Webb Foyer

What's on?	What age?	What time?
<b>Heritage walking tours stand</b> Campus tours covering the history of the University of Birmingham	All ages	All day
<b>Tag Campaign and Philanthropy Tour</b> A guided tour of tagged buildings, people and projects	All ages	All day
<b>Tours of the Cadbury Research Library</b> Meet here for a discovery tour of the library, visiting secure areas usually off-limits and the chance to handle original documents	All ages	All day
<b>UBSport</b> Take a tour of the Munrow Sports Centre and find out about membership and activities on offer	All ages	All day
<b>NMR Facility tours</b> From drug design to cancer diagnostics, find out more about our facilities	16+	All day
<b>Blue Plaque Trail</b>	All ages	All day
<b>Sculpture walking tours</b>	All ages	All day

Meet at Muirhead Tower

What's on?	What age?	What time?
<b>Tower Tours</b> Take a tour to the top of the building and enjoy magnificent views of the city and surrounding countryside	All ages	All day

## Senate Chamber seminar room

What's on?	What age?	What time?
<b>Mini Medical School</b> A taster session based on our popular ten-week courses for young people wanting to find out more about medicine. Sign up for your session here!	All ages	Sessions at 12.00 noon, 1.00pm and 2.00pm



## Aston Webb Building – Great Hall

	What's on?	What age?	What time?
1	<b>So you think you can teach?</b> Curious about how teachers are trained, or considering a career change? Learn more about our courses here	Adults	All day
2	<b>Build a helmet for an egg</b>	All ages	All day
3	<b>Ironbridge Live!</b> A showcase of activities and exhibitions that are run at the Ironbridge Gorge Museums, including 'Enguinity' science activities	6–14 years	All day
4	<b>Cadbury Research Library: Special Collections stand</b> Learn more about the special collections library, handle some of the objects and find out about the tour	All ages	All day
5	<b>Lapworth Museum of Geology – information point</b>	All ages	All day
6	<b>Research and Cultural Collections Museum stand</b> Find out about our extensive collections here at Birmingham – includes object handling sessions	All ages	All day
7	<b>Tower building</b>	All ages	All day
8	<b>VISTA display</b>	All ages	All day
9	<b>Active Lifestyle demonstrations</b> See activities such as Zumba, which are on offer at Birmingham to help you build an active lifestyle	All ages	All day
10	<b>Good hand washing</b> Put your hand washing to the test using our glowbox, which shows the bacteria left on your hands	All ages	All day
11	<b>Extract DNA from a strawberry</b> See cancer cells through a microscope and learn how to extract DNA from a strawberry	All ages	All day
12	<b>Cancer at Birmingham</b> Find out about our Leukaemia and Lymphoma research	8+	All day





	What's on?	What age?	What time?
13	<b>How good are your lungs?</b> Use our equipment to test your breathing and learn about the respiratory system	8+	All day
14	<b>Black hole ping pong</b> Play the retro pong game with a science twist, flinging stars back and forth using the gravitational pull	8+	All day
14	<b>Space time quest: build a gravitational wave detector</b> Use your scientific skills and £100 million budget to make one of the biggest discoveries of the last 50 years	8+	All day
15	<b>Our changing language</b> How has the way we use language changed over the years?	Adults	All day
16	<b>Exceptional children: fiction and disability</b> How can literature transform our understanding of disability around the word?	All ages	All day
17	<b>Creative writing</b> Our academics will display and discuss their work	16+	All day
18	<b>EA Worldview (Enduring America)</b> Move over CNN, BBC, Al Jazeera... there's a new kid on the media block!	11+	All day
19	<b>Word matching game</b> A game based on research about how words are combined in English. There is even a phone app of the game, so that learners can play it anywhere!	All ages	All day
20	<b>Battling the bulge</b> Dance mats to help get Birmingham moving	All ages	All day
21	<b>Project PAPA</b> Enhancing young people's health and well-being, via positive experiences in youth sport	All ages	All day



	What's on?	What age?	What time?
22	<b>Try something new!</b> Physical activities from skipping to skittles	3+	All day
23	<b>Legorobotics</b> Come and build your own lego robot	7+	All day
24	<b>Build an icoaster</b> Build a roller coaster and see if you can make your ball reach the end	7+	All day
25	<b>Relaxation techniques to increase pain tolerance</b> Try our experiment to prove that relaxation techniques can help to increase pain tolerance	7+	All day
26	<b>Gory makeup</b> Relax for a while and walk away with the bubonic plague using special effects make-up from our resident expert!	7+	All day
27	<b>Guess the bone</b> Challenge your knowledge by guessing the bone on our skeleton	All ages	All day
28	<b>BWAMS</b> Learn how to listen to your heart, take blood pressure and learn about your bones	5+	All day



