



UNIVERSITY OF
BIRMINGHAM

Birmingham Global

Civic roots, national eminence, international reach.



‘Fundamentally, everything we do in terms of our global partnerships is about enhancing our research, creating real-world impact and providing opportunities for the reciprocal sharing of knowledge. It is through these partnerships – formed both in the UK and internationally – that we work to address emerging global challenges. Although our partnership activity is truly global, we have identified China, India, Brazil and North America as the key strategic regions where we will seek to focus our engagement and Birmingham Global explores both the nature of that engagement as well as our continuing desire to produce ground breaking research; deliver innovative teaching and create opportunities for our students and staff to gain meaningful international experience.’

Peter Clack, Director of International Relations

Contents

Foreword	3
Our global impact	4
Making global connections	6
Creating global citizens	8
Our global footprint	10
A selection of our international partnerships	
The Americas	12
China	14
India	16
Europe	18
Africa	19

Foreword

At Birmingham, we are proud to be amongst the world’s top 100 universities – a forward-thinking institution with civic roots, national eminence and global reach. From our world-leading research and vibrant international student and staff community to the breadth and depth of our international engagement, Birmingham is a global university in every sense.



Certainly, the globalisation of knowledge forces universities to think more globally. They must evolve to compete on the world stage, but remain recognisable and distinctive in that environment. At Birmingham, our approach to global engagement is informed by our unflinching commitment to quality and distinctiveness. It is this that will enable us to become one of the world’s great universities.

With almost 5,000 international students from more than 150 countries, and a third of our academic staff from overseas, our campus is truly a diverse and global place. We are a founding member of Universitas 21, a renowned consortium of world-leading, research-intensive universities, and have more than 225 international exchange partners, as well as robust links with leading global employers including Rolls-Royce, Procter & Gamble and KPMG. This broad international perspective enables our graduates, academics and professionals to develop into individuals with the knowledge, skills and qualities to fulfil their potential as global citizens.

Birmingham researchers are instrumental in delivering impact across the globe; from medical advances and scientific innovations to influencing policy and enhancing cultural understanding. We continue to invest in the very best academic staff. For example, in just two years our innovative Birmingham Fellows initiative has attracted the most talented young researchers worldwide who are focusing in areas ranging from particle physics, labour migration and medical law to the fundamental biology of cancer cells.

As you will see throughout this publication, our global footprint is both distinctive and expanding. We are developing our international presence and collaborations across academia, industry, culture and government across all continents.

Our international strategy is demonstrated to date by numerous significant initiatives including our landmark Birmingham Guangzhou Centre, a novel partnership with the municipal government in Guangzhou; our considerable joint investment with the University of Nottingham in Brazil; extensive engagement with cultural partners in Chicago and the American Midwest; and our permanent presence in New Delhi, Shanghai, Nigeria and Brussels.

As the world of higher education continues to change at an unprecedented rate, I am confident that Birmingham will adapt to meet the global challenges and opportunities ahead. We will continue to develop the characteristics and qualities which define us locally and represent us as a global university.

This means continuing to attract the brightest and best international students and staff, and expanding our portfolio of leading international partners. By doing this, we will be what we aspire to be: one of the world’s great universities.

David Eastwood

Professor David Eastwood
Vice-Chancellor



Our global impact

At Birmingham we have a tradition of innovation. Our early research has had a lasting impact on lives, culture, industry and society: our current research aspires to do the same.

Our pioneering, collaborative research with global partners means we see benefits locally, nationally, and internationally. From world-class cancer research to pioneering the development of new fuels and technologies; our combined academic expertise continues to address the

key challenges facing the modern-day world. We work to confront the problems of tomorrow, finding innovative solutions to myriad issues that affect us nationally and internationally. From advising and informing political states in support of conflict resolution

and diplomacy, to research into disease and the immune system to better understand the ageing process; we are jointly leading the way in challenging and preventing problems on the global horizon.

ANTIBIOTIC ACTION

Bacterial resistance to antibiotics is one of the great global challenges of the 21st century, with more strains becoming resistant to drugs and few new drugs becoming available. Microbiologists at the University of Birmingham are at the forefront of intense collaborative research efforts exploring how bacteria become antibiotic resistant and identifying potential new drug compounds and combinations to combat resistance.



CLEANER AND MORE EFFICIENT RAILWAYS

The Railway Research Group (RRG) at Birmingham has developed two important simulators that are used by industry around the world to understand energy consumption and power system requirements for electric trains.

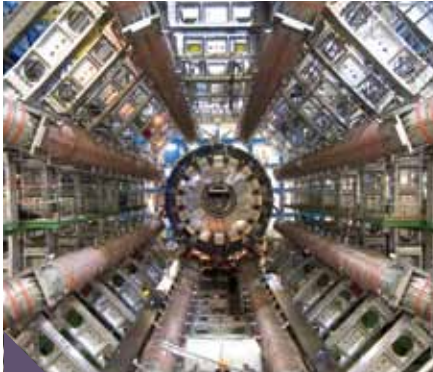
The Single Train Simulator is able to generate a 'power versus time' profile for a train on a particular journey, which can be used to calculate energy consumption, journey time and peak power requirements. This information can then be used to inform strategies for reducing energy consumption, such as advising drivers on how best to drive the trains on particular routes.

For diesel trains, the group is looking at how braking energy can be stored on trains for later reuse. Simulations carried out for the UK's Department for Transport have shown that around 10–20% of energy can be saved through the use of hybrid systems.

GUANGZHOU BIOBANK COHORT STUDY

Building on well-established links, epidemiologists are carrying out the first five-year follow-up of a pioneering Chinese public health project.

The Guangzhou Biobank Cohort Study (GBCS) is a collaborative research project between Birmingham, the Guangzhou Occupational Diseases Prevention and Treatment Centre and the University of Hong Kong, monitoring 30,000 men and women over 50 in Guangzhou province. The study's chief aim is to examine the effects of genetic and environmental influences on health and chronic disease development.

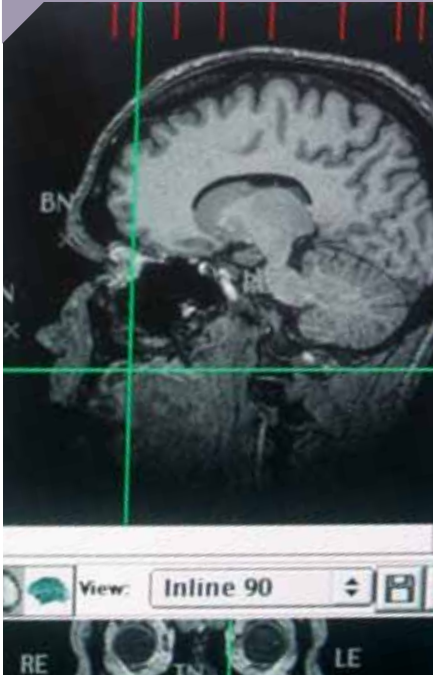


SENIOR PARTICLE PHYSICIST TAKES ON LEAD ROLE AT CERN

Dave Charlton, Professor of Particle Physics at our School of Physics and Astronomy, took up the position of Spokesperson (the overall scientific lead) for the ATLAS project at the Large Hadron Collider (LHC) at CERN, the European organisation for Nuclear Research, in March 2013. A large-scale international collaboration of approximately 3,000 scientists, ATLAS is one of the two general-purpose experiments collecting and analysing data on proton-proton collisions. Together, these two experiments recently discovered the elusive particle, the Higgs boson; a key building block of the Standard Model of Physics. We are also the only UK institute involved in the ALICE experiment; an exciting, and relatively new, area of particle physics with over 2,000 physicists involved worldwide.

BRAIN FUNCTION PROFILING OF STROKE PATIENTS

Birmingham scientists have devised a unique screening instrument that provides a 'one-stop' brain function profile of patients who have suffered stroke or other neurological damage. The Birmingham Cognitive Screen (BCoS) can offer a visual snapshot of the cognitive abilities and deficits of an individual, which can then be used to guide clinical decision making.



CONFLICT AND RECONSTRUCTION

Paul Jackson is a political economist working predominantly on reviewing and advising on conflict and post-conflict reconstruction. He is currently Director of the Global Facilitation Network for Security Sector Reform (GFN-SSR), which engages him in wide-ranging policy discussion with donor agencies engaged in conflict analysis and security sector reform, including various European governments, the EU, the UN and the World Bank as well as the UK government.

Find out more about our global research. Visit www.birmingham.ac.uk/research

Making global connections

We are a leading global university linking people, organisations and places to opportunities and discoveries across the world.

Our collaborations are wide ranging, from student exchanges and teaching partnerships to joint research on global issues and cultural engagement. Through our wide-ranging international networks, we engage in collaborative opportunities on many levels with universities, governments and companies, and create global experiences for students and employees.

From industry to individuals, much of our work with international partners delivers discernible global impact – tackling issues such as the

planet's future energy demands, healthy ageing and world poverty. Our partnerships allow the collective sharing of knowledge and expertise at the highest level; from medical advances and scientific innovations to influencing policy and enhancing cultural understanding.

We have international partnerships across all continents and are continually developing our international presence and collaborations, seeking mutually beneficial partnerships to complement our significant existing global footprint.

Birmingham is a founder member of Universitas 21 (U21), an eminent consortium of world-leading research-intensive universities that promotes international engagement among its 27 member institutions across 17 countries. The U21 network enables collaboration between member universities on a scale none would be able to achieve even through bilateral alliances.

Creating mutually beneficial exchange opportunities is part of our global strategy: we are an active member of the European Erasmus scheme, which promotes mobility and co-operation between students and staff of different European countries.

About 350 Birmingham students travel abroad as part of the scheme and 225 participate in an international exchange programme. Larger numbers from overseas are welcomed onto our campus, with more than 700 exchange and study abroad students coming to Birmingham each year.

The collaborations we forge are as diverse as they are dynamic. For example, within U21, a Birmingham/Delhi/Melbourne joint module on global security brings together postgraduate students from three continents to provide contrasting perspectives.



“ At Birmingham, our approach is to develop distinctive, long-term international partnerships that are sustainable and mutually beneficial. From individual academic engagement to institutional partnerships our networks are not only wide ranging, but profoundly instrumental in addressing the worldwide challenges of today and tomorrow. We make meaningful global connections – linking people, organisations and places with knowledge and opportunity. ”

Andréa Edwards, Director of International Development

Our researchers work closely with overseas partners in important areas of global policy, such as supporting the reconstruction of post-conflict environments and understanding the process of decentralisation of states. For instance, after the war in Iraq, we set up a Higher Education Management Programme to help contribute to rebuilding the country's higher education system.

Among our key sponsorship partners is the UK government's global Chevening scholarships programme, which brings the international leaders of tomorrow to Birmingham.

Each year, we welcome hundreds of international visitors to our Edgbaston campus – from potential partners and ambassadors to some of the foremost politicians. Recent visitors include UN Secretary-General Ban Ki-moon.

Get in touch
International Relations
University of Birmingham
Edgbaston
Birmingham
B15 2TT
United Kingdom
international@bham.ac.uk
+44 (0)121 414 2894
www.birmingham.ac.uk/international-collaborations



Ban Ki-moon speaking at the University during a visit to Birmingham.

Creating global citizens

Cultural diversity and a global perspective are at the heart of the University of Birmingham, among our students and staff.

We create global citizens, forming a community which considers itself international thanks to the opportunities, networks and partnerships we have established across the world. Not only this; on our multi-cultural campus, students and staff enjoy diverse experiences in a city with international reach.

We know that today’s leading graduates, academics and professionals are those able to operate across the globe, so we are building our international links and attracting the brightest talent from many countries to enhance and encourage a global outlook among our staff and students.

The Birmingham experience our students enjoy prepares them for life as an active member of a global society, transforming their prospects

in a competitive employment market. Our teaching and research addresses today’s global challenges and our students are encouraged to question, debate and create new ideas and perspectives to tackle such global issues.

Our students and staff are also provided with opportunities for international exchange, community and global volunteering and are encouraged to pursue independent, new experiences to broaden their perspective.

International students are a central part of the University of Birmingham’s community. They bring global experience, new ideas and an international outlook which contribute to the academic and social richness of our global university.

NOBEL PRIZE WINNERS AMONG ALUMNI AND STAFF

From revealing the structure of DNA to developing new treatments for heart disease and cancer, their research and work has made an impact worldwide.

“For me, the University represents everything that is good about the city in which it is located: its spirit, its people and most important of all, its soul.”

Geoffrey Ma, Chief Justice of the Court of Final Appeal in Hong Kong, (LLB Law, 1977)

“This international internship has given me the once-in-a-lifetime opportunity to spread my wings and venture out there in the world all by myself, raise my brand and prove myself globally. I stretched myself. I pushed myself. I stepped outside of my comfort zone and I had to adapt to my surroundings and embrace change... I explored; looked at the world from different perspectives which have opened my mind and broadened my horizons tremendously.”

Daniela, Finance intern with GlaxoSmithKline in Dubai



Students experience study and life in a different country through our international exchange and Erasmus programmes, while each year both students and staff travel to partner institutions to enhance their research or professional knowledge as part of Universitas 21, the global consortium of universities.

As part of this, we also welcome students to Birmingham and provide opportunities for staff from other institutions to visit, share knowledge and experience life at the University. Our students also enjoy life-changing opportunities in different countries, experiencing bespoke internship placements at top global employers during the summer. Employers have included GlaxoSmithKline, the British Consulate and Samsung in locations such as Dubai, Chicago, Singapore and Australia, ensuring our students have a competitive edge in a global job market.

However, it does not end here; our graduate community comprises more than 273,000 alumni in over 190 countries around the world.

We attracted thousands of applications from across the world to our Birmingham Fellows scheme, which offers early-career scholars a prestigious opportunity to establish and develop their outstanding careers at Birmingham.

These groups network and support career progression within their own countries, but also continue to support and advocate the University of Birmingham across the world, creating a powerful bond between our past and future students, staff and communities.

“I felt as though I was contributing to the work of the British Consulate and also that of the wider network, in the Embassy. It was inspiring to see how British diplomats go about their daily duties and to be included in their work for six weeks was an honour.”

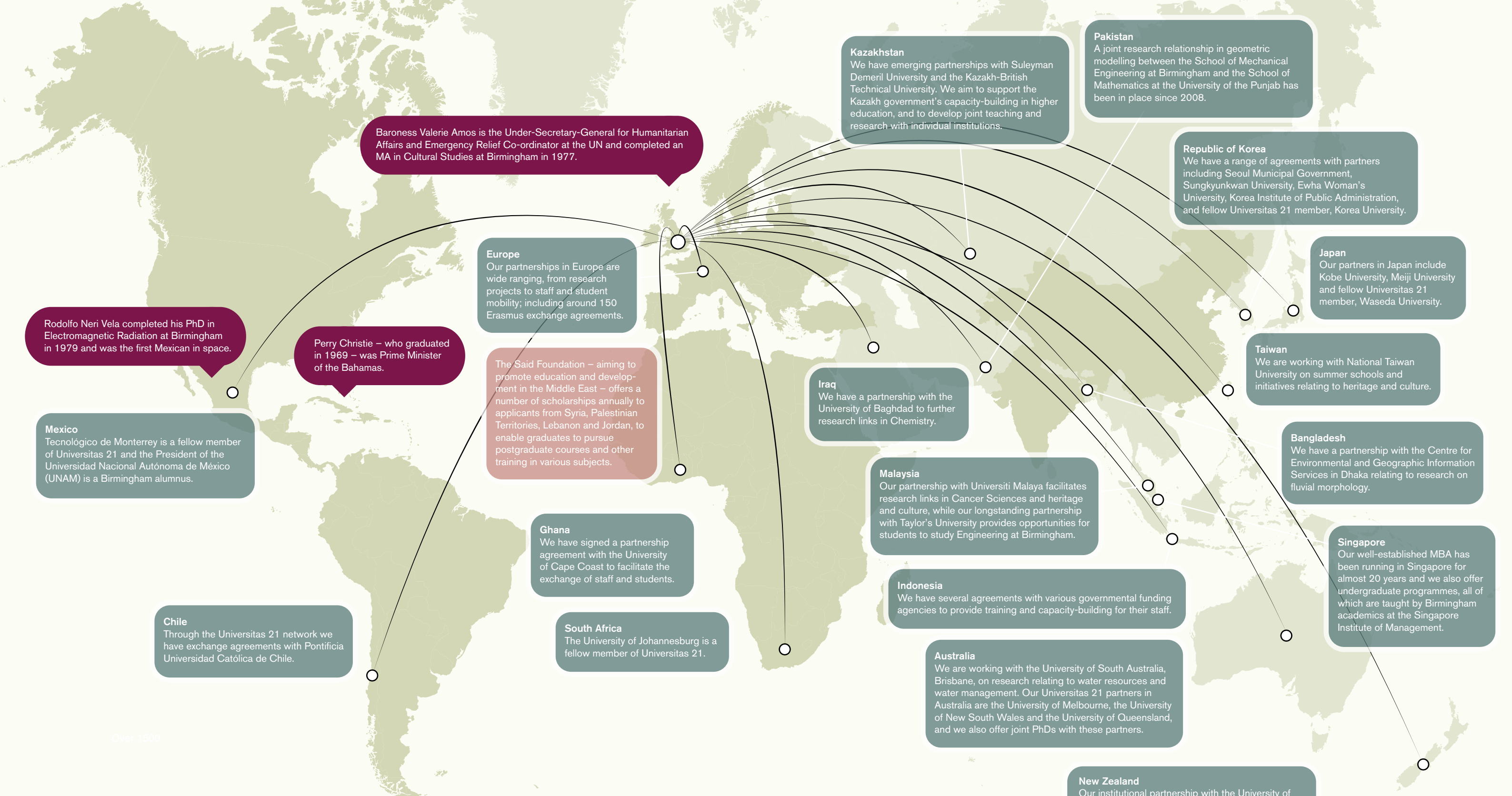
Claire, British Consulate intern in Chicago, USA



Alumnus Dr Mo Ibrahim, who completed a PhD in Electronic and Electrical Engineering in 1981, is a global expert in mobile communications, founding Celtel International to build and operate mobile networks in Africa. In 2006 Mo established the Mo Ibrahim Foundation to support African leadership, stimulating debate around – and improving the quality of – governance in Africa. In 2008 Mo was listed by *TIME* magazine as one of the 100 most influential people in the world and was also awarded an Honorary Degree from Birmingham in 2009.



Alumnus Michael Acton Smith is CEO, Creative Director and founder of children’s entertainment company Mind Candy – the driving force behind global kids’ phenomenon Moshi Monsters, which has over 75 million users in 150 territories around the world.



OUR GLOBAL FOOTPRINT

A selection of our international partnerships

We have agreements in place with a range of public and private organisations which place high-achieving international scholars at the University of Birmingham and support research collaborations. Increasingly, these agreements are being signed in Latin America with organisations such as FIDERH and Conacyt, and the Middle East with organisations such as the Kurdistan Regional Government and the Islamic Development Bank.

Baroness Valerie Amos is the Under-Secretary-General for Humanitarian Affairs and Emergency Relief Co-ordinator at the UN and completed an MA in Cultural Studies at Birmingham in 1977.

Rodolfo Neri Vela completed his PhD in Electromagnetic Radiation at Birmingham in 1979 and was the first Mexican in space.

Perry Christie – who graduated in 1969 – was Prime Minister of the Bahamas.

Mexico
Tecnológico de Monterrey is a fellow member of Universitas 21 and the President of the Universidad Nacional Autónoma de México (UNAM) is a Birmingham alumnus.

Chile
Through the Universitas 21 network we have exchange agreements with Pontificia Universidad Católica de Chile.

Europe
Our partnerships in Europe are wide ranging, from research projects to staff and student mobility; including around 150 Erasmus exchange agreements.

The Said Foundation – aiming to promote education and development in the Middle East – offers a number of scholarships annually to applicants from Syria, Palestinian Territories, Lebanon and Jordan, to enable graduates to pursue postgraduate courses and other training in various subjects.

Ghana
We have signed a partnership agreement with the University of Cape Coast to facilitate the exchange of staff and students.

South Africa
The University of Johannesburg is a fellow member of Universitas 21.

Kazakhstan
We have emerging partnerships with Suleyman Demirel University and the Kazakh-British Technical University. We aim to support the Kazakh government's capacity-building in higher education, and to develop joint teaching and research with individual institutions.

Iraq
We have a partnership with the University of Baghdad to further research links in Chemistry.

Malaysia
Our partnership with Universiti Malaya facilitates research links in Cancer Sciences and heritage and culture, while our longstanding partnership with Taylor's University provides opportunities for students to study Engineering at Birmingham.

Indonesia
We have several agreements with various governmental funding agencies to provide training and capacity-building for their staff.

Australia
We are working with the University of South Australia, Brisbane, on research relating to water resources and water management. Our Universitas 21 partners in Australia are the University of Melbourne, the University of New South Wales and the University of Queensland, and we also offer joint PhDs with these partners.

New Zealand
Our institutional partnership with the University of Auckland, a fellow Universitas 21 member, enables active student exchange. Environmental Science students also benefit from a professional placement abroad with organisations including the National Institute of Water and Atmosphere (NIWA), local regional councils or the Department of Conservation, through which they receive vocational training to complement their academic study.

Pakistan
A joint research relationship in geometric modelling between the School of Mechanical Engineering at Birmingham and the School of Mathematics at the University of the Punjab has been in place since 2008.

Republic of Korea
We have a range of agreements with partners including Seoul Municipal Government, Sungkyunkwan University, Ewha Woman's University, Korea Institute of Public Administration, and fellow Universitas 21 member, Korea University.

Japan
Our partners in Japan include Kobe University, Meiji University and fellow Universitas 21 member, Waseda University.

Taiwan
We are working with National Taiwan University on summer schools and initiatives relating to heritage and culture.

Bangladesh
We have a partnership with the Centre for Environmental and Geographic Information Services in Dhaka relating to research on fluvial morphology.

Singapore
Our well-established MBA has been running in Singapore for almost 20 years and we also offer undergraduate programmes, all of which are taught by Birmingham academics at the Singapore Institute of Management.

The Americas

Our ties with the Americas have flourished over recent years with extensive strategic engagement in both North and South America.



NORTH AMERICA

We are making significant investment to support academic engagement in North America. As part of our engagement we have developed a flourishing network of departmental relationships with leading academic institutions, generating research results and funding successes. Exciting educational opportunities have been established for students through new exchange partnerships, prestigious internships and collaborative teaching arrangements.

In the United States we have a distinctive partnership with the City of Chicago and the State of Illinois. Our close relationship has many strands however, over the last year, a significant 'cultural engagement' dimension has evolved.

Enhancing dialogue across our respective arts and academic sectors offers a major opportunity to build meaningful partnerships, promote knowledge exchange, educate new audiences and support global engagement.

Initiatives include:

- A landmark partnership with the National Public Housing Museum
- A jointly organised symposium entitled Local and Global Cultural Engagement, after which Birmingham was invited to contribute to Mayor Emanuel's Chicago Cultural Plan
- Internships for Birmingham students at the Chicago Shakespeare Theater, Chicago's Baroque Band and the British Consulate General

We are developing links across the Midwest, in particular with the University of Illinois at Urbana-Champaign (UIUC), a globally elite public research-intensive university. By working together, we aim to attract transatlantic and international funding.

Wide-ranging, cross-college research and educational relationships are emerging with leading institutions in the Midwest. Signature partnerships include a new exchange agreement where UIUC undergraduate students can study at Birmingham's prestigious Shakespeare Institute, and professional learning workshops in our School of Sport, Exercise and Rehabilitation Sciences.

To meet the increasingly competitive global employment market, we have developed a transatlantic student internship programme with the British-American Business Council. Our strong partnership with the Fulbright Commission has led to us being awarded the Fulbright Distinguished Chair. We are one of only three UK institutions to have been selected to host this prestigious awards programme over the next four years.

In Canada we have developed strong partnerships with a number of leading universities, including McGill University and the University of British Columbia as part of the Universitas 21 network. Our academic community leads a number of faculty to faculty engagements with leading Canadian universities in a wide range of disciplines. For example, we have strong research links with the University of Toronto in varied areas such as Cancer Studies, Bioethics and German and European Studies.

WE PLAYED A PIVOTAL ROLE IN THE SUCCESS OF THE LONDON 2012 OLYMPICS BY PROVIDING 1ST CLASS TRAINING FACILITIES FOR THE WORLD'S FASTEST MAN **USAIN BOLT** AND THE REST OF THE **JAMAICAN TRACK & FIELD TEAM.**



BRAZIL

In South America, we are making a significant joint investment, alongside The University of Nottingham, to support partnership development and research collaboration with leading universities and key public and private sector organisations in Brazil.

As part of this we share a joint office to support partnership development and have established a joint investment fund with the State of São Paulo Research Foundation (FAPESP) supporting research projects between FAPESP-funded researchers and academics from Birmingham and Nottingham. A series of workshops on themes such as oil and gas, bio-energy, sporting mega-events and public accountancy have taken place with many more planned.

We offer a Visiting Fellows programme enabling early-career lecturers and post-doctoral researchers from Brazilian universities to conduct three-month research projects at Birmingham. Additionally, in collaboration with the Coordenação de Aperfeiçoamento de Pessoal de Nível Superior (CAPES), we award ten full-fee PhD scholarships per annum for Brazilian students seeking to carry out research at Birmingham. We are developing further links

with the National Institute of Cancer in Brazil to develop joint clinical trials, principally for head and neck cancer.

We are a leading UK university in sport, exercise and health – ranked first for research – making us an ideal partner for Brazil, one of the world's great sporting nations.

As part of this, we are now assisting the next Olympics host city, Rio de Janeiro, to ensure the 2016 Games have a lasting benefit to the country. Initiatives include hosting an international conference on the legacy of global mega-events, and a sports science-based agreement with Brazil's Ministry of Sport to develop its policy around engagement in sport and the training of elite athletes.

Birmingham is a lead institution in the Brazilian Government's scholarship programme Science without Borders, welcoming around 60 students annually.

The Universities of Birmingham and Nottingham have showed imagination and determination in seeking to create and deepen partnerships in Brazil.

Alan Charlton, HM former Ambassador to Brazil

Our Brazil office acts as an important hub in supporting and developing collaborations across the length and breadth of the country. From this base we are building substantial and meaningful links with a range of research, educational, business and government stakeholders, and foresee a continued upward curve in our significant engagement.

Professor Malcolm Press, Pro-Vice-Chancellor for International Engagement in the Americas



Birmingham's Shakespeare Institute

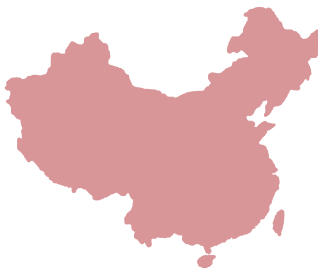


Birmingham recently hosted a visit from Andre Arantes, Director of Basis Sport and High Performance, in September 2013.



Science without Borders scholars at the University

China



The history of collaboration between China and the University of Birmingham dates back almost to the foundation of our institution. Chinese students have been studying at the University for more than 100 years and our relationship with China continues to become closer and more significant.

We opened our representative office in Shanghai in 2010 and our extensive links with China are markedly demonstrated by two further landmark engagements; the Birmingham Guangzhou Centre in southern China and the China Institute on our Edgbaston campus.

These two platforms bring together some of the greatest academic minds from both countries which, collaboratively, produce world-leading research in areas such as public health. As a result, we are ranked third in the UK by the Research Councils UK for joint publications with Chinese academics.

Many of our top academic staff work on projects with partners all over China. In July 2012, we announced a major joint venture with Chinese genomics organisation BGI to provide a world-class research and training centre on our campus that integrates state-of-the-art approaches in molecular biology.

A further key initiative is the awarding of the prestigious Li Siguang scholarships – named after the famous geologist who studied here and later became China's Minister for Geology – to conduct PhD study at the University.



Alumna, Lei Zhao, dancing for Birmingham Royal Ballet



CHINA
INSTITUTE
中国科学院



In Birmingham, the China Institute was created in 2012 to act as an 'umbrella' structure for the extensive China interests across all of our five Colleges.

Among its many activities, the Institute co-ordinates an annual lecture and seminar series to promote a greater understanding of China and its place in the world, hosts visits from Chinese partners and promotes the University's engagement with China to encourage interdisciplinary research between the Colleges.



The China Institute launch: Vice-Chancellor David Eastwood with HE Liu Xiaoming, Chinese Ambassador to the UK

THE GUANGZHOU CENTRE

Our Guangzhou Centre, which opened in September 2011, is enabling us to develop mutually beneficial joint research and education projects with Chinese partners. Situated in the Pearl River Delta, Guangzhou is the third largest mainland city in China. It has been a sister city of Birmingham since 2006 and we have a long history of collaborating with the city in areas such as health and social sciences.

We have a strategic partnership with the municipal government of Guangzhou and have been working closely together on a range of significant research projects including:

-  The Born in Guangzhou Cohort Study working with the Guangzhou Women and Children Medical Centre
-  The Guangzhou Biobank Cohort Study in partnership with Guangzhou No. 12 Hospital
-  The Birmingham-Guangzhou Brain Cognition Centre in collaboration with Guangzhou No. 1 Hospital
-  Stem Cell Research on Liver Diseases together with the Guangzhou Institute of Biomedicine and Health (GIBH)
-  Service Industry Study with Guangzhou University

Further projects, focusing on engineering and physical sciences, are due to be launched soon, involving joint PhD education and knowledge transfer activities.

The Centre provides a springboard for wider collaborations across southern China, such as focused partnerships with leading universities, including Sun Yat-Sen University in medical sciences, South China University of Technology in mechanical and automotive engineering, and a flying faculty MBA programme with Jinan University. Other joint engagements include Continuous Professional Development programmes and corporate partnerships.





We are very proud of our longstanding and active relationship with China highlighted by our flagship engagements both in Guangzhou and on our Edgbaston campus. Birmingham has a deep and robust commitment to collaborating with our partners in China and we will continue to seek opportunities to develop mutually beneficial partnerships with Chinese universities, the public institutions and other agencies.



Professor Edward Peck, Pro-Vice-Chancellor, academic lead for China and Chair of the China Institute



India

The University of Birmingham’s connection to India spans more than a century. We welcomed the first Indian students to our campus in 1909 to study for degrees in mining and commerce.

Since then we have provided education to over 1,300 Indian alumni including renowned author Dr U. R. Ananthamurthy, who was shortlisted for the Man Booker International Prize 2013, and Indian Cabinet Secretary Ajit Kumar Seth.

India continues to be an important region for academic engagement and student recruitment. We are committed to further developing our relationship with India centred on building key institutional partnerships at school and college level, and enhancing links with universities and institutions to promote collaborative research.

Birmingham has had a representative office in Delhi since 2009, enabling us to strengthen and develop these links from a permanent in-country base. The office acts as a hub for staff across the University who regularly travel to India to take forward research and teaching collaborations.

In addition, the office team works closely with students interested in coming to Birmingham, providing advice on everything from programmes of study to accommodation and visas.

We have a diverse and increasing range of research and teaching partnerships with India, and a small selection of these are highlighted opposite.

Birmingham is working with Yale University and the University of Delhi to support the development of a pioneering global justice programme in India. The Nyaya Global Justice Programme at the University of Delhi will be a major intellectual hub for the study of international ethical questions, which have strong implications for India and neighbouring countries. These include questions around India’s role in the World Trade Organization, G20 and United Nations Security Council, fairness in international trade, co-operation in poverty reduction efforts, and ethics in global security issues.

Birmingham clinicians are studying the salt intake of Indian adults as part of an international research team led by the Public Health Foundation of India. The research will provide vital new data to aid the development of a national salt reduction strategy. India has a diverse dietary culture where salt is used extensively but up-to-date figures on population salt consumption are very limited. Excess salt intake is associated with an increased risk of high blood pressure, an important risk factor for cardiovascular disease.

Researchers from the School of Biosciences have joined forces with the Indian Institute of Science (IISc), Bangalore in a partnership focused on tackling tuberculosis. Combining the complementary strengths of both institutions in this area, the research is taking a novel approach in studying the biology of Mycobacterium tuberculosis, the bacterium that causes TB, with the aim of developing new treatments and diagnostics. Together the researchers are involved in deciphering how the ‘bricks’ of the cell wall of the tuberculosis bacillus are made.

The School of Physics and Astronomy and the Indian Institute of Science Education and Research (IISER) in Pune are collaborating in joint curriculum development, computer-based learning and experimental tool design, and knowledge transfer in the area of ultra-cold atoms. The partnership is paving the way for students to acquire the highly developed experimental and theoretical skills and knowledge of cutting-edge technologies required for research in this discipline, and aims to bridge the gap between academia and industry in this field.



“With a population of 1.22 billion India is rapidly developing into a major global power and a vast market for higher education. Birmingham’s range of collaboration with India is rich and diverse. We will continue to develop meaningful research and teaching partnerships, acting as a dedicated partner as the country develops its economy and capacity in higher education.”

Professor Adam Tickell, Provost and Vice-Principal and academic lead for India

Europe

Our position in the ‘knowledge’ heart of Europe is increasingly strong. We currently have almost £80 million in EU grants to help fund more than 270 projects with nearly 1,300 academic and non-academic organisations across Europe and the world.

Ranked within the top 50 most active organisations in the EU’s Seventh Framework Programme (FP7) for research and development, we are confident we can maintain our place when Horizon 2020 replaces FP7 in 2014.

Our strong reputation as a big player in Europe has been further enhanced by the opening of our office in Brussels in 2010 – making us the first UK university to have a committed, dedicated presence in the political nerve-centre of the EU. It serves as an important meeting place for networking, project delivery and workshops with our European partners, and helps us to inform European policy debates.

Our European standing is especially impressive when it comes to the prestigious Marie Curie Actions fellowships; standing 11th out of 842 academic organisations. Furthermore, as leaders of Initial Training Network (PhD training) projects, we are third in the whole of Europe.

A major reason for our growing success in winning vital European research funding is that our academics perform at the highest level. They participate and lead in the most relevant, timely and inclusive collaborations to meet EU-wide challenges such as health, transport and energy.

Among our many and growing links with Europe is a close relationship with Goethe University (GU) in Birmingham’s sister city of Frankfurt which include a number of EU-funded joint projects, chiefly in sciences and social sciences.

In May 2013, GU won a four-year funding award from the German Academic Exchange Service (DAAD) to strengthen its research and teaching collaborations with five global universities, including Birmingham. This will enable collaborative projects between Birmingham and GU, for example, in the field of African Studies, to be brought forward. The award will also help fund joint publications and Masters and PhD programmes.

“Europe is increasingly vital to the international profile of leading universities, in terms of intellectual collaborations, pedagogic exchanges and funding opportunities. Our co-operation with Goethe University in Frankfurt will help both institutions succeed on all three fronts.”

Professor Michael Whitby,
Pro-Vice-Chancellor and academic lead for Europe



Africa

We continue to strengthen our ties with Africa. For half a century, we have had a dynamic Centre of West African Studies (CWAS), the only centre of its kind in the world, which has carried out a raft of interdisciplinary research focused on people’s real-life experience in Africa.

We recently launched the Department of African Studies and Anthropology (DASA) – in which CWAS now sits – to reflect the expansion of teaching and research across the entire continent.

We were recently joined by an expert on the Democratic Republic of Congo; one of our talented young researchers emerging from the Birmingham Fellows initiative. We are launching a Masters course in Africa and Development and we have also established partnerships and exchange agreements with several universities across Africa.

The 50th anniversary year of the Centre of West African Studies will also see us host a major international conference, Crossroads in African Studies, and launch an annual lecture series, the Fage Lectures, in recognition of the Centre for West African Studies founder Professor John Fage.

We have long attracted a significant number of students from Nigeria and other African nations, and now have an office in Lagos, staffed by a full-time country officer who provides advice and guidance to those wishing to study at Birmingham.



“As our department celebrates its 50th anniversary, our aim is to build upon our history as a premier global institution for interdisciplinary research and teaching on Africa and its diaspora. Already known for our research and teaching on West Africa, we are expanding our areas of expertise to cover the entire African continent.”

Dr Keith Shear, Head of the Department of African Studies and Anthropology (DASA)



UNIVERSITY OF
BIRMINGHAM

International Relations
Edgbaston, Birmingham,
B15 2TT, United Kingdom
www.birmingham.ac.uk