

UNIVERSITY OF
BIRMINGHAM



Inspiring education

since 1900

International Prospectus
Undergraduate and Postgraduate
2013 admissions

THERE IS MORE.
LOOK DEEPER.

see page 5



AN INSPIRATIONAL
ACADEMIC EXPERIENCE
AT A LEADING GLOBAL
UNIVERSITY.



Chancellor's Court at the heart of the campus

What does this mean for you?

An elite academic experience at a university that pushes the boundaries of knowledge

Our range of research is one of the widest in the UK and has powered our university for over 100 years, won Nobel Prizes, and made an impact on Birmingham, the nation and the world. Your academic studies will be challenging. You will be an active part of a leading academic community where independent thought and enquiry are not only encouraged, but expected. You will be studying and working alongside academics who are global experts in their field, and Birmingham's extensive support services, many designed exclusively for international students, will ensure that you are equipped to meet that challenge.

Outstanding opportunities that prepare you for success

Your Birmingham experience will prepare you for life as an active member of a global society by transforming your prospects in a competitive employment market. By providing opportunities for you to get involved in activities outside your academic programme, including community volunteering, career and leadership skills development, and mentoring support from our outstanding graduates, you will graduate from Birmingham prepared for the changing economic landscape of the 21st century.

An outstanding learning environment in a global city

Birmingham has a vibrant and lively academic community. You cannot fail to be inspired by our campus, which is rich in heritage and beauty, set in a leafy green site with a wealth of amenities and attractions. The world-class facilities, rich cultural assets and wealth of sporting opportunities will support and enhance your learning experience. You will study on the doorstep of Birmingham, one of Europe's most dynamic and culturally diverse cities. With an international airport and at the centre of the country's transport network, Birmingham is your gateway to the UK, Europe and beyond.

A warm welcome

BIRMINGHAM OFFERS YOU AN ELITE EDUCATION AND AN INSPIRATIONAL STUDENT EXPERIENCE.

International students are an essential part of our community at Birmingham. You bring global experience, new ideas and an international outlook which contribute to the academic and social richness of our university. With almost 5,000 international students from more than 150 countries represented here, this is one of the largest and most vibrant international student communities in the UK.

By choosing to study at Birmingham, you choose to join a prestigious, forward-thinking institution in a lively, multicultural city, set on a beautiful leafy estate which is widely acknowledged as one of the world's great university campuses.

You will join an elite academic group, working alongside outstanding University academics who are researchers at the forefront of their fields. Their expertise ensures that your academic career is informed by world-leading research. You will also benefit from the world-class facilities we offer; as a result of £700 million of recent investment you will have access to our new state-of-the-art Music building, enhanced learning facilities across campus, improved library and IT services and high quality academic student support.



As you might expect, our academic standards are high and we actively encourage independent thinking. We pride ourselves in empowering our students to develop these skills, alongside traditional academic teaching.

To complement your studies you will have access to specialist careers advice, personal skills development and training workshops as well as wide range of extra-curricular activities giving you access to sport, music and much more.

Recognising that international students have particular requirements, we also provide a dedicated International Students Advisory Service, offering advice and support before you leave your home country, and throughout your time at the University, ensuring that you feel happy, safe and at home on our beautiful campus.

I am confident that choosing to study at the University of Birmingham is a rewarding investment in your future, and I look forward to welcoming you.

A handwritten signature in black ink, appearing to read 'D Eastwood', written over a white background.

Professor David Eastwood
Vice-Chancellor



FACT

In November 2011 the *International Herald Tribune* ranked **Birmingham 9th in the UK and 55th in the world** in its Global Employment Rankings

FACT

The University motto *Per Ardua Ad Alta* translates as 'through efforts to high achievements'

FACT

At almost 100 metres the University clock tower, known as 'Old Joe', **is the tallest freestanding clock tower in the world**

THERE IS MORE. LOOK DEEPER.

In this prospectus we've used **cutting-edge technology** so you can hear directly from our students about what it's like to live and study at Birmingham:

If you've got an iPhone or iPad, **download our free Look Deeper app** and scan over the front cover and watch our campus come to life.

For other smartphones, including iPhones and iPads, look out for QR codes to take you to videos of our students and staff talking about their experience of the University.



Contents

PUSH THE BOUNDARIES OF KNOWLEDGE

The Birmingham approach to learning	8
Student support	10
Birmingham: Solving tomorrow's problems today	12
Our learning facilities	14
Bachelor of Liberal Arts and Sciences	15
Birmingham Foundation Academy	16

SEIZE THE OPPORTUNITIES THAT WILL SHAPE YOUR FUTURE

Employability	19
The Guild of Students	20
A global university	21
Broaden your horizons	22
Life after Birmingham	23

IMMERSE YOURSELF IN THE BIRMINGHAM EXPERIENCE

The campus	25
The city of Birmingham	26
Accommodation	28
Campus highlights	30

Essential information	31
How to apply	32
Funding your study	33
A-Z of undergraduate programmes	34
A-Z of postgraduate programmes	38
The small print –	
essential information for all students	41
How to find out more	44
Maps – the Edgbaston campus	46



Welcome to the University of Birmingham

WITH AN OUTSTANDING ACADEMIC PORTFOLIO AND ESTABLISHED OPPORTUNITIES FOR PERSONAL DEVELOPMENT, THE UNIVERSITY OF BIRMINGHAM ENABLES YOU TO GAIN THE MOST FROM STUDYING IN THE UK.

Here are a few of the reasons why you should consider joining us for your overseas study experience:

- We have welcomed international students to our campus for over 100 years and now have one of the largest international student communities in the UK. As a direct result, our alumni are based in over 190 countries.
- With research and institutional partners across the globe, we have strengthened our connections with permanent presences in India, China, the United States and Brazil.
- Birmingham is part of the Russell Group, an association of 24 major research-led universities.
- The UK's latest Research Assessment Exercise (RAE) in 2008 identified 90% of our research as having global reach. This placed us at the enviable position of being ranked 12th in the UK overall (out of 159 institutions).
- Following the recent Institutional Audit carried out by the Quality Assurance Agency, the University received a verdict of 'confidence' in our quality assurance and enhancement processes; the highest award available.
- The University has eight Nobel Prize winners among its alumni and staff. From revealing the structure of DNA to developing new treatments for heart disease and cancer, their research and work has made an impact worldwide.
- Our location in the centre of the UK makes the University your ideal base for exploring the UK and Europe outside of your studies. We offer a stunning campus with everything you need on one site, outstanding facilities and a welcoming environment. With a young multicultural population, Birmingham is a safe city with the lowest overall crime rate of the eight major English cities, with a 27% reduction in all crime between 2005–2008. (*Safer Birmingham Partnership* www.birminghamcsp.org.uk)



'My experiences at Birmingham went well beyond my expectations. I have been blessed with an amazing institution and exceptional educational environment surrounded by a friendly community. The impact it has made on not only my academic studies, but also me personally will carry through the rest of my life. As a student studying Economics, I have benefited from top-notch instruction delivered by world-class lecturers.'

Anar Sadykova, BSc in Economics, third year undergraduate from Kazakhstan

World rankings

Jiao Tong (China)	In the top 150 in 2011
QS World University Rankings	67th in 2011
Times Higher Education (THE)	148th in 2011
International Herald Tribune	55th for post-qualification employability

UK rankings

The Complete University Guide (published in <i>The Independent</i>)	23rd overall in 2012
The Times	24th overall in 2012
The Guardian	30th overall in 2012
The Sunday Times	25th overall in 2011
The International Student Barometer (ISB)	Overall we ranked 29th out of the 123 Higher Education Institutions (HEIs) in the ISB for our 'mean satisfaction' score. This also placed us in 20th place out of the 57 UK HEIs.

push

THE BOUNDARIES OF KNOWLEDGE

'The Guangzhou Biobank Cohort Study is an epidemiological project run in partnership with Hong Kong University and the Guangzhou No.12 Municipal Hospital.

The study aims to look at the environmental, lifestyle and genetic determinates of chronic diseases, including cancers and cardiovascular and lung diseases.

Based on this study we have helped PhD students to complete their theses and many have gone on to produce first class international publications.'

Professor KK Cheng

*Professor of Public Health
and Primary Care.
Academic lead for the University's
Guangzhou project.*



bit.ly/birminghamvideos



The Birmingham approach to learning

THE UNIVERSITY OF BIRMINGHAM PROVIDES AN ENRICHING ENVIRONMENT FOR YOU TO DEVELOP YOUR ACADEMIC AND PERSONAL SKILLS. **STUDYING IN THE UK WILL OFFER A NEW AND EXCITING CHALLENGE**, AND AS A BIRMINGHAM STUDENT YOU ARE PART OF AN ACADEMIC ELITE, LEARNING FROM WORLD-LEADING EXPERTS.

You will be encouraged to become an independent and self-motivated learner. Independent study means that you will be required to spend your time outside of lectures reading around your chosen subject, formulating your own ideas. This will encourage you to develop an enquiry-based approach to learning, enabling you to challenge ideas and put forward your own opinions.

This approach may be very different to the way you have studied in the past. With the support of your lecturers and tutors, you will learn to adapt to this participative approach and reap the rewards it brings you.

Our enquiry-based approach enables you to take control of your own learning, encouraging you to develop the skills that employers are looking for: independence, teamworking, problem solving and time management. These skills will be of great benefit in your future career.



Learning support

Studying at a higher level will bring its challenges, and we realise that it can be daunting. To support you throughout your learning we offer a comprehensive range of learning support including:

- Each student at the University of Birmingham is allocated a personal tutor who will support you on academic-related issues
- Your school or department will have welfare tutors who can help you with academic or welfare-related issues
- The University has recently appointed a University Senior Tutor, a senior academic with whom you can consult (in strictest confidence)
- The International Students Advisory Service (ISAS) can offer advice on academic issues
- The English for International Students Unit (EISU) offer free, term-time English classes, which are invaluable for supporting you throughout your studies
- Specialised support services are available for students with disabilities





Shakespeare Institute Library



Types of programme

English programmes

The English for International Students Unit (EISU) offer free, term-time classes in academic English and free individual support to help you develop your ability to write academic essays. For more information please visit www.eisu.bham.ac.uk

Foundation programmes

The Birmingham Foundation Academy offers pathways in each of our five colleges with progression to almost any undergraduate programme upon successful completion; designed for academically able students from countries whose school qualifications are not recognised in the UK for direct entry to a degree programme. For more information visit www.birmingham.ac.uk/foundation-academy or see page 16.

Undergraduate programmes

Typical awards: Bachelor of Arts (BA), Bachelor of Science (BSc), and Bachelor of Engineering (BEng): a degree with honours taken over three to five years, depending on your subject. Many of our undergraduate programmes offer the option of studying abroad as part of your degree. For more information visit www.birmingham.ac.uk/students/courses/undergraduate

Postgraduate taught programmes

Typical awards: Master of Arts (MA), Master of Science (MSc), and Master in Business Education (MBA): typically a 12-month programme, which includes a project or dissertation. For more information visit www.birmingham.ac.uk/students/pg

Postgraduate combined research and taught programmes

Examples of awards: Master of Philosophy (MPhil), Masters in Research (MRes): programmes that last one or two years, combining the benefit of training with research. For more information visit www.birmingham.ac.uk/students/courses/postgraduate/combined

Doctoral research programmes

Examples of awards: Doctor of Philosophy (PhD), PhD with integrated study (NRPhD), Joint PhD and split-site PhD: doctoral research programmes that typically last three to six years; the programmes are individual study, with the support of a research supervisor. For more information visit www.birmingham.ac.uk/students/dr

Modules Outside the Main Discipline (MOMD)

Many of our degree programmes allow you to study one module from a discipline outside your area of specialism for at least one year of your programme.

Study Abroad

For many of our students we offer the opportunity to spend time abroad on many of our degree programmes. Similarly, if you are studying your undergraduate programme in your home country, but would like the benefits that a year in the UK would bring, you can choose to spend time at Birmingham. For more information visit www.birmingham.ac.uk/studyabroad

Teaching methods

We have a range of teaching methods, designed so that you can get the most from your studies:

Lectures – you will listen to experts sharing their knowledge and discoveries in challenging and provocative ways. Academics will introduce you to key facts and ideas in your subject. There may be mini activities and pair work to complete during the session, and follow-up work to complete later. You may like to take written notes, but most lectures are now recorded, so you can access the information afterwards on the Virtual Learning Environment (VLE).

Seminars – in small groups lead by academics you will be encouraged to present and discuss your ideas and debate interpretations and opinions with other students.

Tutorials – you will have opportunity to discuss your work and assignments with your tutor, usually in small groups.

Laboratory-based work – you will have a chance to get practical experience and apply the knowledge you have learnt in your lectures to a laboratory setting. Through these sessions you will learn to expertly analyse real-life problems that will equip you with the practical and analytical skills so valued by employers. This mainly applies to courses in science, technology and engineering.

Workshops – you will engage in problem-solving sessions facilitated by a member of academic staff; these sessions usually involve students working in groups.

Self study – you will be expected to 'read-around' the subject matter of your lectures. Lectures will stimulate your curiosity to find out more through your own independent study and teamwork with fellow students, both before and after the lecture itself.

Peer group learning – you will be asked by your tutor to direct a lesson or prepare a presentation with your fellow classmates. By interacting with the lesson material, you will remember the content more effectively.

Student support

WE WANT YOU TO ENJOY YOUR TIME WITH US AND SO THAT YOU CAN RELAX WE HAVE PUT IN PLACE A COMPREHENSIVE NETWORK OF SUPPORT AND ADVICE IF YOU EVER NEED IT. **WITH ONE OF THE LARGEST INTERNATIONAL STUDENT POPULATIONS IN THE UK, WE INVEST IN SPECIFIC SUPPORT SERVICES** FOR OUR STUDENTS WHO CHOOSE TO STUDY WITH US AWAY FROM THEIR HOME COUNTRY.

Our International Students Advisory Service (ISAS) offers you support when you arrive and during your studies, and we also provide pre-arrival support which helps you to plan your time in the UK and the arrangements you need to make. Our advice extends to your dependents, if you wish to bring them while studying at Birmingham. Advice from ISAS is free and confidential. We provide support, advice and guidance on a wide range of areas including:

- Applying for your visa/visa support
- Bringing your family to the UK
- Finance
- Living and working in the UK
- Information about social activities
- Information on studying in the UK

We have many successful years' experience of welcoming international students to Birmingham. Our 'International Welcome' at the start of your first term is a good opportunity to meet other students, get to know the campus and settle into life at Birmingham. Our website provides information to guide you through important 'things to do' such as finding and registering with a doctor or opening a bank account.

Looking after your children

If you choose to bring your family to the UK, the University has two nurseries on campus offering a high standard of care and education.

English language support

If you have not yet met the English language requirements attached to your offer, or wish to improve your English language and academic skills before your academic course starts, you can attend a full-time pre-sessional course run by our English for International Students Unit (EISU).

EISU also provide:

- Free English language support while you are studying here
- English classes for your partner
- Day trips to places of cultural and historic interest
- An opportunity to stay with a British family through HOST

Supporting your faith

St Francis Hall, the chaplaincy on campus, is a place where students of all faiths or none can meet for worship, an informal chat, or speak to a chaplain for spiritual, religious advice or pastoral counselling. We have Christian, Jewish, Muslim, Hindu and Buddhist chaplains and there are well-established societies and groups. The Guild of Students also has a variety of faith-based groups. In addition to the facilities on campus, the city of Birmingham has places of worship and prayer rooms for many faiths and religions.

Wellbeing

The Wellbeing Centre aims to enable students to get the most out of their time at University. Should you ever need it, we have a dedicated team of professional counsellors providing individual, group or online support.

Guild of Students

The Advice and Representation Centre (ARC) in the Guild of Students offers free, confidential and impartial advice to all students on a range of issues including academic, finance, employment, immigration and housing. For more information on what the Guild can offer you see page 20.

Disability

If you have a disability, the University has a range of services available to support you throughout your studies. It is important that you tell us as early as possible about your disability, so that we can identify the support that you might need. Any information that you tell us about your disability will be treated in the strictest confidence.

Learn more

www.birmingham.ac.uk/students/support





Support at a glance:

International Students Advisory Service

Tel: +44 (0)121 414 8464

Online queries:

www.studenthelp.bham.ac.uk or visit
www.as.bham.ac.uk/studentlife/international

English for International Students Unit

www.eisu.bham.ac.uk

Advice and Representation Centre

www.guildofstudents.com/thearc

Disability support

www.as.bham.ac.uk/study/support/learn

Supporting your faith

www.chaplaincy.bham.ac.uk

Childcare options

www.nursery.bham.ac.uk



'The support services put in place enabled me to do well in my modules. These included academic writing sessions to help me and other students improve our writing skills as English was our second or even third language.'

Snib Musonda, MEd Management of Special Education in Developing Countries, 2010 (Zambia)

Birmingham: Solving tomorrow's problems today

BIRMINGHAM IS AN INTERNATIONALLY POWERFUL RESEARCH-LED UNIVERSITY. AS WELL AS OUR COMMITMENT TO PROVIDING EXCELLENT TEACHING, **OUR ACADEMIC STAFF ARE ENGAGED IN A WIDE RANGE OF RESEARCH PROJECTS THAT HAVE CREATED A MAJOR POSITIVE IMPACT ACROSS THE GLOBE.**

At Birmingham we have a tradition of innovation. For more than a century, research from the University has had a major impact on the city, the region and the world.

Our early research had a lasting impact on lives, culture, industry and society; our current research aspires to do the same. In the 20th century we pioneered transplant surgery, the use of microwaves and created artificial Vitamin C. In the 21st century we continue to break new ground. From world-class research into cancer and global infection to the development of a new generation of fuels, alongside a Cultural Learning Hub and the Birmingham Policy Commissions, our academic expertise continues to address today's key national and global challenges.

What does research at Birmingham mean for you?

Whether you choose to study at undergraduate or postgraduate level, research at Birmingham gives you a distinct advantage. Academics at Birmingham form a pioneering, enquiring, energetic, international community; constantly advancing the boundaries of knowledge. As a result, many are global experts within their fields. You will be studying within this stimulating community, and your programme will therefore include the very latest emerging theories and ideas. By becoming actively involved in your education, you will develop skills in critical enquiry, debate and self-motivation.

Learn more

Visit www.youtube.com/unibirmingham and watch our research playlist.



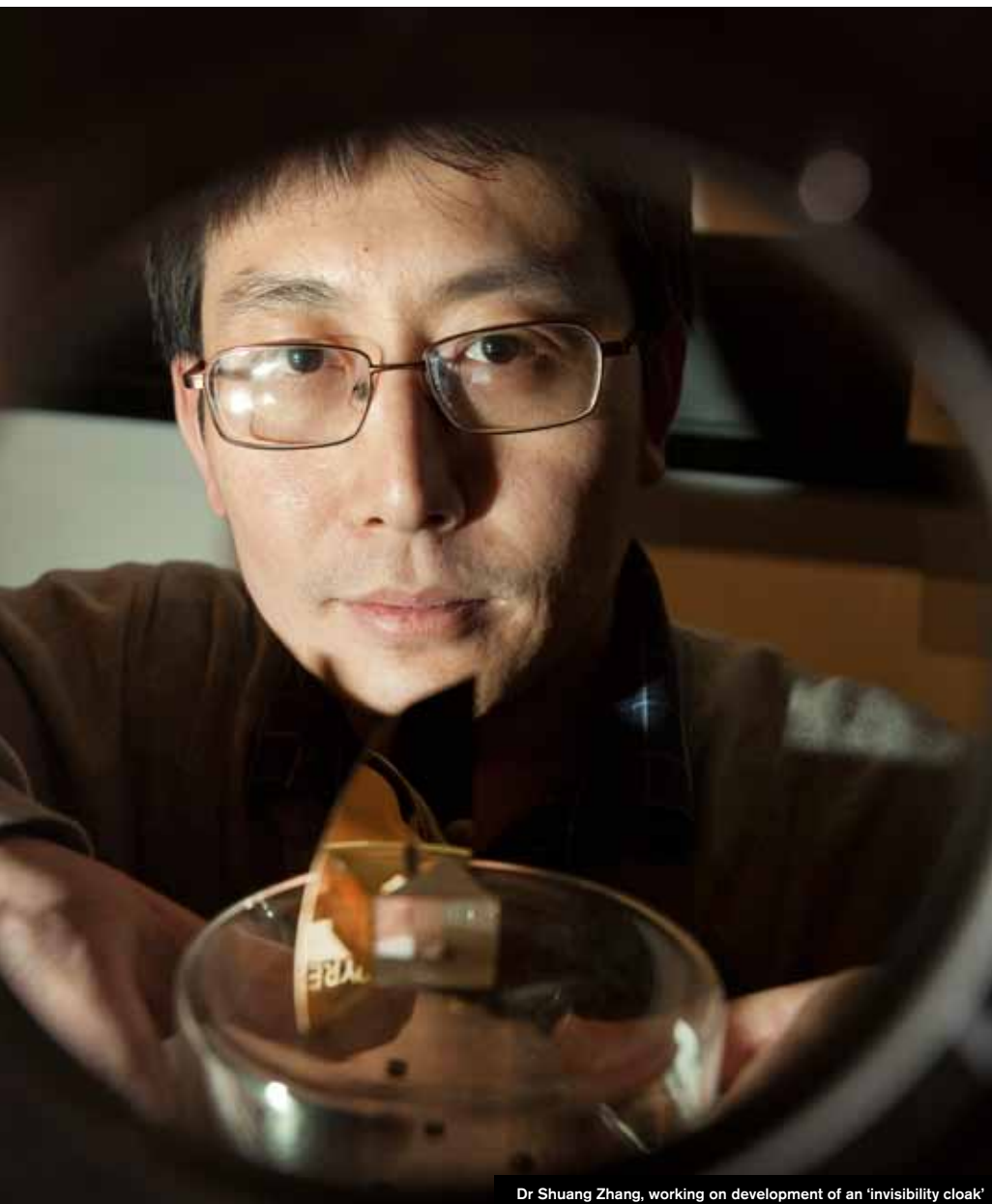
'I am studying a PhD programme in the School of Government and Society. My school prepares students from around the world to become excellent researchers and to thoughtfully engage with various aspects of contemporary international affairs and to contribute to cutting-edge research.'

Corina Filipescu, Doctoral Researcher student from Sweden, European Politics, 2007–2013

Collaborative projects

- A £480,000 joint research investment with **FAPESP** (the funding council in Sao Paulo State, Brazil) supports collaborative research projects between the universities of Birmingham and Nottingham and Brazilian institutions. The first initiatives focus on the themes of bio-energy, oil and gas.
- We have entered into a unique relationship with the **Guangzhou** municipality in China to facilitate joint research and education initiatives in Guangzhou and the wider region. Known as the Guangzhou Centre, it will focus on a number of key themes including medicine and healthcare, biotechnology, advanced manufacturing and urbanisation. The foundation of this relationship is the Guangzhou Biobank Cohort Study; a study of more than 30,000 people which aims to understand the effects of genetic and environmental influences on health and major diseases like cancer, dementia and chronic lung conditions.





Dr Shuang Zhang, working on development of an 'invisibility cloak'



Outlined below are just three examples of the world-class research that takes place at Birmingham:

Developing an invisibility cloak

Physicists from the University of Birmingham, with colleagues at Imperial College, London and Technical University of Denmark, have demonstrated an 'invisibility cloak' that can hide a three-dimensional object. Dr Shuang Zhang (pictured above), lead investigator from the School of Physics and Astronomy, says: 'This is a huge step forward as, for the first time, the cloaking area is rendered at a size that is big enough for the observer to 'see' the invisible object with the naked eye.'

Preventing and resolving conflict

Our outstanding research in global conflict and policy covers a huge range of topics from the challenges of state-building in Africa to the politics of post-Soviet Russia. In recent



In November 2011 our world-leading Centre for Formulation Engineering was awarded the *Queen's Anniversary Prize for Higher and Further Education*, perhaps the most prestigious honour that can be awarded to UK universities or colleges. The Prizes are given to institutions that make an outstanding contribution to the intellectual, economic, cultural, and social life of the nation.

years, our academics' research activities have focused on several key areas. From active assistance and advice in the reconstruction of post-conflict environments, to understanding the process of decentralisation of states, each research area has had real life impact in advising how political aid should be applied, how institutional reforms should be enacted and how services should be provided.

Tackling cancer

Birmingham is an internationally renowned centre for translational cancer research and cancer education. Our work encompasses many aspects of cancer biology from basic laboratory science through to clinical trials on thousands of patients.

Birmingham's Cancer Research UK Clinical Trials Unit (CRCTU) is the largest cancer trials unit in the UK. It is responsible for design, implementation and analysis of trials in most types of cancer and covers everything from the first test of new therapies, to large studies comparing the potential of recently established drugs.

Birmingham is renowned for its work on immunotherapy, which looks at ways to use the body's natural immune responses in the fight against cancer.

Our learning facilities

WITH THE LATEST CLASSROOM TECHNOLOGIES, **BIRMINGHAM OFFERS AN EXCELLENT LEARNING EXPERIENCE**. OUTSIDE OF LECTURES, THE UNIVERSITY CAMPUS HAS EXCELLENT FACILITIES FOR YOU TO MEET UP WITH CLASSMATES TO DEBATE, RESEARCH AND LEARN.

Our main library is one of the UK's largest academic libraries, giving you access to the widest range of ideas and theories on your chosen subject. There are a further eight libraries and resource centres across campus, based in departments.

The student portal is an online gateway, providing access to your University email account, news, online communities and e library. This gives you access to over 16,000 electronic periodicals, databases and websites to support your learning. In addition, WebCT Vista and the iVLE are our virtual leaning environments which include course content, programme materials, assessment and discussion boards.

We are constantly developing our learning spaces. Most of our teaching rooms are equipped with touch screen digital whiteboards, all have wifi and our newly refurbished Muirhead Tower lecture theatre has high definition video projection for cinematic widescreen presentations.



UoB Student mobile app – information at your fingertips

UoB Student is a free mobile app for students that allows you to get personalised information directly to your mobile phone. With a pocket guide to services, a campus map, access to your library account and the ability to search for available PCs on campus among the features, the app provides access to important tools and information that will see you through your first few weeks of university and beyond.



NEW

Bachelor of Liberal Arts and Sciences

THE LIBERAL ARTS AND SCIENCES ARE RECOGNISED INTERNATIONALLY AS THE **KEY DEVELOPMENT GROUND FOR THE NEXT GENERATION OF LEADERS IN ALL FIELDS.**



New to the University of Birmingham for 2013 is the Bachelor of Liberal Arts and Sciences, a prestigious undergraduate degree for elite students. Developed following requests from our international employer advisory group to create graduates with wide-ranging knowledge and skills in addition to in-depth expertise, this degree will give you an extra edge, particularly in the international graduate market.

Graduate careers will range from the sciences to the creative arts, from finance to leading policy think tanks. Internationally, Liberal Arts and Sciences graduates progress to the legal professions, major consultancy and management firms, postgraduate study or graduate entry to medicine (subject to following an appropriate pathway during the programme), to name a few.

Design your own programme

If you have a wide range of interests, enjoy exploring new perspectives and relish challenges, this exciting new degree will equip you with both a breadth and depth of knowledge, and provide a wide range of experiences to enable you to influence our rapidly evolving world.

Using the breadth of academic expertise from across one of the UK's largest universities, this degree allows you to design your own programme of study based on your strengths and interests. Your studies will stretch and challenge you, enabling you to demonstrate to employers a wide range of skills and knowledge as well as in-depth expertise in one Major subject.

The four-year programme includes a year at one of our world-leading partner universities outside the UK, a range of internship opportunities, a dedicated advisory team



and access to some of the top academics in the University, who can offer exceptional mentoring and guidance.

Entry requirements

A level AAA–A*AA

IB score 36–38

Subject to interview.

Learn more

www.birmingham.ac.uk/students/courses/undergraduate/govsoc/arts-science.aspx

'The year I spent in Birmingham was the happiest year of my life. Besides the knowledge and experience, I made some great friends there, some of which will last forever. To those who are going to study at the University: congratulations, you won't regret your choice!'

Yunwa Jiang, MSc Marketing alumnus, 2007 (China)

NEW

Birmingham Foundation Academy

BIRMINGHAM FOUNDATION ACADEMY PROVIDES AN OPPORTUNITY FOR HIGHLY MOTIVATED INTERNATIONAL STUDENTS WITH AN EXCELLENT ACADEMIC RECORD AND THE WILLINGNESS TO STUDY HARD, TO ENTER THE UNIVERSITY ENVIRONMENT ONE YEAR BEFORE THE START OF THE UNDERGRADUATE PROGRAMME.

The Foundation Academy offers a fully integrated student experience with bespoke teaching from Birmingham academics. It is an opportunity to pursue an innovative and academically challenging pathway from one of our colleges, and continue your studies at undergraduate level on successful completion of your Foundation Academy year.

A unique on-campus experience

At the heart of Birmingham Foundation Academy is Priorsfield, a beautiful Manor House on the Edgbaston campus. Priorsfield is home to the Birmingham Foundation Academy Hub and English Language Centre and some of your English Language and Study Skills modules will be taught here. A professional team based at the Hub will be on hand to support you in your social and academic adjustment to University life.

You will live in dedicated, catered, accommodation on campus, with en suite facilities and a shared kitchen/lounge dining area.

Your academic pathways

When you apply to Birmingham Foundation Academy, you will choose the academic pathway you would like to enter. The pathways available are:

- Arts and Law
- Engineering and Physical Sciences
- Life and Environmental Sciences
- Medical Sciences
- Social Sciences

Once you have received your offer, you will be asked to indicate the undergraduate degree you intend to progress to, and to make your module choices. Upon successful completion of the Foundation Academy year,



you will be guaranteed a place on one of our undergraduate programmes.

Information about the Foundation Academy pathways can be found at www.birmingham.ac.uk/foundation-academy/progression

Fee package

We offer a unique, all-inclusive Birmingham Foundation Academy package. At the time of going to print, fees for 2013–14 had not yet been confirmed. As a guide, the cost of the package for 2012–13 was £20,300.

This includes:

- One year's tuition fees: £12,500
- Fully catered, en suite, single accommodation for one year: £7,000
- Books and all classroom equipment: £800

Study with us

The Birmingham Foundation Academy is an ideal opportunity for you if your high school

certificate is not recognised for direct entry to a UK Bachelor's degree and you have achieved or are predicted high grades in your high school examinations. It is also an ideal opportunity for you if your qualifications would normally be acceptable for entry to a UK Bachelor's degree but you have not taken the required subjects to a high enough level.

Entry requirements

Full details about the academic and English language requirements can be found at www.birmingham.ac.uk/foundation-academy/requirements

How to apply

You can apply directly for the Birmingham Foundation Academy using the online form at www.birmingham.ac.uk/foundation-academy/apply



Priorsfield – home to the Foundation Academy Hub and English Language Centre



Fees include accommodation in Mason

Unique benefits of the Birmingham Foundation Academy

As a Birmingham Foundation Academy student, you will benefit from a distinctive, high-quality University of Birmingham experience:

- The Foundation Academy provides you with a dedicated study, social and welfare centre as you adjust to university life. You will be taught entirely on the University’s renowned Edgbaston campus and receive support in the Foundation Academy Hub and English Language Centre, both based at Priorsfield.
- Unlike other universities, we do not use external providers for our programmes. Respected Birmingham academics will teach you and you will have a choice of bespoke modules.
- When you enrol you will join our large and diverse student community and have access to all University facilities, giving

you the opportunity to meet students from all over the world.

- The University’s newest residence on campus, Mason, will be your home throughout the year. A Residents’ Life Co-ordinator will live on-site to provide dedicated support and will be the first point of contact for all your welfare concerns.
- A professional team that understands your needs will support you as you make the transition to becoming an independent learner. The team includes a personal tutor who will provide advice on any study related issues and help you monitor and reflect on your progress.

Learn more

Tel: +44 (0)121 414 9292

Email: foundation-academy@contacts.bham.ac.uk

www.birmingham.ac.uk/foundation-academy



English language entry requirements

	Bachelor’s degree with Integrated Foundation Year – four-year programme (not Arts and Law Pathway)	Bachelor’s degree with Integrated Foundation Year – four-year programme (only Arts and Law Pathway)	Birmingham Foundation Academy Programme – one-year programme (not available for Arts and Law Pathway)
IELTS	5.5 overall with at least 5.5 in each band	6.0 overall with at least 5.5 in each band	5.5 overall, with at least 5.0 in each band
TOEFL IBT	72 overall with at least: Listening – 17 Reading – 18 Speaking – 20 Writing – 17	80 overall with at least: Listening – 20 Reading – 19 Speaking – 21 Writing – 20	68 overall with at least: Listening – 15 Reading – 17 Speaking – 19 Writing – 17
Pearson Test of English	A minimum of: Listening – 51 Reading – 51 Writing – 51 Speaking – 51	A minimum of: Listening – 53 Reading – 53 Writing – 53 Speaking – 53	A minimum of: Listening – 45 Reading – 45 Writing – 45 Speaking – 45

**If you have studied in a country where English is the medium of instruction and you have achieved a suitably high grade you will not normally be required to take an additional English proficiency test. Please check the website for further information.*

‘The University of Birmingham has a long history. Its campus is amazing and beautiful. The name of the University is well known around the world.’

Maira Tursunbekova, BSc (Hons) Public Policy, Government and Management from Kazakhstan

seize

THE OPPORTUNITIES THAT WILL SHAPE YOUR FUTURE

'I am very proud to study at the University of Birmingham especially with the department of Education. I have gained a wealth of knowledge and understanding of key debates around Education as an international issue.

I view myself as an ambassador who will be able to make a transformational impact in an Educational context both internationally and especially in my home country Botswana.'

Lesego Motlogelwa

Masters in International Studies in Education student from Botswana.



bit.ly/birminghamvideos



Employability

AS AN INTERNATIONAL STUDENT, YOU HAVE ALREADY TAKEN THE FIRST STEP IN DEFINING YOUR FUTURE: **CHOOSING TO STUDY AT THE UNIVERSITY OF BIRMINGHAM. THE EXPERIENCE THAT THIS OFFERS YOU BRINGS WITH IT EXCITING OPPORTUNITIES.**

Your academic programme is only part of your university experience. The University of Birmingham offers many opportunities for you to fully benefit from your time with us and enable you to graduate as a professional, skilled individual.

Preparing for the future – the Careers and Employability Centre

In addition to offering world-class education, the University of Birmingham offers proven opportunities for students to stand out in the competitive world of graduate recruitment. We actively encourage you to take advantage of the opportunities available to develop your skills alongside your academic programme of study.

Careers and Employability Centre

A Birmingham degree is highly regarded by employers; it is one of the top UK universities that major companies target when looking for new employees. Many employers expect their candidates to be able to show more than a strong academic background. Many employers expect you to get involved in activities to develop your skills and experiences.

The Careers and Employability Centre at Birmingham offers a wide range of services, including a dedicated International Careers Advisor working exclusively on your behalf with assistance from a team of International Student Ambassadors, to support you in achieving this, including:

- A series of workshops for international students to help you understand the expectations of global recruiters
- One-to-one advice on career options
- Job seeking and assessment centre workshops designed specifically for international students

- Events on campus including job fairs and employer networking events
- Careers advice to alumni
- Skills development through participation in the Birmingham Skills Series, Personal Skills Award and employer-led presentations
- Support in developing enterprise, innovation and entrepreneurship skills through our centre of Entrepreneurship and Innovation

Developing your career

Birmingham offers you a holistic university experience, which nurtures personal development alongside academic study.

To gain the most from your study, you need to develop 'soft' skills in addition to your academic ability including networking, presentation and leadership skills. Employers increasingly look for these attributes in applicants, which ultimately make you more employable.

These services form only part of what we offer to make you employable. To ensure that you stand out from the crowd, we encourage you to take part in activities outside of your academic study.

You could get involved in helping the local community through our volunteering office, become a member of a sports team or, for undergraduate students, take part in our award winning Personal Skills Award (PSA), an optional employability skills development award.

For more information on the Careers and Employability centre visit:

www.birmingham.ac.uk/students/careers

Working alongside your degree

The University's International Students Advisory Service can provide advice on working during your studies. Check the UK Council for International Student Affairs for the latest information: www.ukcisa.org.uk/student/working_during.php

The Job Zone in the Guild of Students advertises vacancies both on campus and in the city. It also offers advice on working during your studies.

Finding jobs in your home country

The Careers and Employability Centre can help you research jobs all over the world. We list international job opportunities on our Vacancy Database – and host fairs, workshops and presentations with many large global companies that offer opportunities worldwide. In order to receive regular bulletins on opportunities for graduate positions and internships, sign up to the Careers and Employability Centre newsletter at www.as.bham.ac.uk/careers/news/subscribenewsletter.shtml

Staying in the UK after study

In certain circumstances some international graduates can pursue careers in the UK. Please visit the UKBA website for further information www.ukba.homeoffice.gov.uk

For more information on the Careers and Employability centre visit:

www.birmingham.ac.uk/students/careers

Do you want to know how to unleash your potential and prepare yourself to compete in the global graduate career market?

»» **PROGRESS** »» is your on-line resource as a student at the University of Birmingham that will help you to: understand and develop yourself and your skills; keep track of your achievements; discover what employers are looking for and plan your career.

You can use »» **PROGRESS** »» throughout your time here to get a head start in preparing yourself for your graduate career.

The Guild of Students

CENTRAL TO STUDENT LIFE AT BIRMINGHAM IS THE GUILD OF STUDENTS. THE GUILD IS THE STUDENTS' UNION FOR OVER 28,000 STUDENTS AT THE UNIVERSITY OF BIRMINGHAM. ALL STUDENTS WHO ATTEND THE UNIVERSITY AUTOMATICALLY BECOME MEMBERS OF THE GUILD.

The Guild exists to make sure you get the best from Birmingham – this includes representing you on issues that matter, involving you in University life, offering support and opportunities for fun.

In the UK, the National Union of Students (NUS) represents the views of students. At Birmingham, our students are represented through the Guild of Students. Students elect Sabbatical Officers every year to communicate students' views to the University, and with a dedicated International Students Officer, you can be assured that your views will be heard.

In addition to representing your views, the Guild is the place to go to meet with friends, shop, get advice and take a break from your studies. There are many opportunities for you to get involved in; here are just a few of them.

Groups and societies

The Guild of Students is home to over 200 clubs and societies. Joining a student group is a great way to make friends and help you settle in during your first weeks on campus. They are also a fantastic way of developing your personal skills. There is a huge range to choose from, be it an international society bringing together people from your own country, performance and arts, a debating society or a subject-related group. During Welcome Week there is a Society Fair, where you can sign up to as many student groups as you like. You can also join student groups at any time throughout the year.

Volunteering

The Guild has over 200 volunteering opportunities for students to get involved in, so you can easily find something to suit your interests. Volunteering is a great way to improve your chances of finding a job once you

'The Guild of Students offered me many "dreams-come-true" opportunities; I participated in a few volunteering programmes, which were organised by the Guild, I also worked for the Guild as a Student Mentor in halls of residence and I learnt first-aid skills and received a certificate. I do not think I could achieve any of the above easily in a Chinese university.'

Hui, Chinese student, BCom Commerce and MSc International Marketing

graduate. Opportunities vary from activity clubs, sports coaching, advisory work, conserving the environment, fundraising, marketing or campaigning, or even volunteering abroad!

Learn more

www.guildofstudents.com/volunteering

Job Zone

The Guild has its own employment service, which offers access to part-time and temporary vacancies, as well as offering advice on employment during your studies.

Advice and Representation Centre (ARC)

The ARC offers free, impartial and confidential information and advice specialising in academic, finance, housing, immigration and employment issues. You can access support online or via the ARC's drop-in service.

www.guildofstudents.com/arc

Student Mentor Scheme

The Student Mentor Scheme provides advice and guidance to all students living in University accommodation. The Scheme can help with a variety of issues related to shared living and accommodation, your academic course, financial matters, and your general wellbeing.



The Guild of Students



Community Wardens

Community Wardens help to keep the local area safe, clean and green for all residents. Our team of wardens work in places where students live in significant numbers, encouraging a sense of responsibility and pride in the area.

Whatever your interests – learning a new activity, becoming a volunteer, or even attending a Guild event – you will never have a better opportunity to get involved, meet new people and make new friends.

For more information on the Guild of Students see www.guildofstudents.com



@guildofstudents

[facebook.com/guildofstudents](https://www.facebook.com/guildofstudents)

A global university

CHOOSING TO STUDY AT BIRMINGHAM OFFERS YOU THE CHANCE TO STUDY IN THE UK, COUPLED WITH THE EXPERIENCE OF A TRULY INTERNATIONAL UNIVERSITY. OUR INTERNATIONAL NETWORKS AND WELCOMING COMMUNITY OF ACADEMICS AND STUDENTS, FROM OVER 150 DIFFERENT COUNTRIES, ENSURE THAT YOUR TIME WITH US BRINGS A GLOBAL PERSPECTIVE TO YOUR LEARNING.



Our academic community is made up of the brightest minds from across the globe, *with 27% of staff coming from outside the UK meaning that your learning has international perspective.*

Internationally networked

We are proud of our international networks, which enable us to offer mobility options for our students and collaborate on world-leading research projects which means that our work has even more impact, increasing the value of your degree.

Universitas 21

A consortium of universities across the globe, known for their excellent research capability. We are one of the founding members of Universitas 21 and are very involved in the development of the group. The consortium allows us to collaborate with other partners and also provides opportunities for our students to study at their university through exchanges and summer school programmes.

See www.birmingham.ac.uk/international/collaborate/universitas21.aspx for more information.

Overseas offices

We have a permanent presence in India, China, the US and Brazil which enables us to speak directly to students, alumni and our research and institutional partners overseas.

Our exchange partners

We have over 200 international exchange partners, allowing our undergraduate students to embark on International Exchange and Erasmus programmes as part of their degrees. See page 22 for more details about study abroad opportunities.

International research

As a research-intensive university, our academics are engaging in projects that have global impact and collaborating with fellow academics and research institutions across the world.

Summer schools

Our collaborations extend to providing opportunities such as the Universitas 21 summer schools to our students – offering short-term overseas experiences to add to the global experience of our students.

Work experience abroad

If you would like to broaden your experience outside your degree but the programme you choose doesn't include time spent overseas, there are other opportunities for you to travel and gain experience. The University's funded work experience scheme provides financial support to undertake work experience over the summer period, including placements overseas. The fund supports students sourcing placements themselves, so you can choose the location and nature of the work.



The University of Birmingham Guangzhou Office

'There's really something special about Birmingham – it's like a big family where students and staff interact in a very friendly and supportive environment. I really enjoyed my time during the MBA. It's hard work but it's extremely rewarding. Today I have friends from countries including England, Norway, Germany, Italy, the US, Iran, Japan, Peru and New Zealand, to name a few.'

Andrew Daer, MBA International Business, 2009 (Chile)

Broaden your horizons

TIME SPENT OVERSEAS IS UNDOUBTEDLY ONE OF THE BEST OPPORTUNITIES AVAILABLE TO YOU DURING YOUR STUDIES. IT IS A PRIVILEGE AND AN EXPERIENCE TO BE PROUD OF AND REMEMBER THROUGHOUT YOUR UNIVERSITY AND PROFESSIONAL LIFE.

Whether you are a University of Birmingham student considering a year studying outside of the UK or an incoming student considering Birmingham as your study abroad destination; a world of opportunity awaits you!

Study abroad for degree students at Birmingham

There are many opportunities for students pursuing full-time degrees at the University of Birmingham to study abroad. An increasing number of our undergraduate programmes include the possibility of a year or term abroad, and there are also exchange opportunities for PhD students.

We have partner universities all over the world, including in the USA, Canada, Australia, New Zealand, Singapore, China, Hong Kong, Japan, Korea, and throughout Europe and Latin America.

Where you will study abroad and for how long is dependent upon what subject you are studying and whether you are an undergraduate or a postgraduate, but with over 200 partner universities, we are able to offer a wide array of international experiences.

To find out more about study abroad opportunities that might be available to you as part of your course visit www.birmingham.ac.uk/students/studyabroad/outgoingstudents/index.aspx

Interested in spending a period of study abroad at Birmingham?

We welcome students from across the globe, who come to Birmingham for a year or half a year on our study abroad programme. You will take the same courses as our degree

students, and will live in the same halls of residence. You will be fully integrated into student life on our campus.

You can take courses from across the University (excluding the Medical School), subject to having the required academic background for the particular courses you wish to take. We admit students for the full year (September to June), for the Autumn Term (September to December), or for the Spring and Summer terms together (January to June).

You must have completed at least one year of full-time university-level study by the time you join the programme. English language entry requirements are the same as for degree study at the University.

2012/13 fees

Students from outside the EU:

Full year £9,995

Part year £4,995

Students from within the EU:

Full year £9,000

Part year £4,500

It is possible to add a pre-session English course to a period of study abroad. Additional fees apply depending upon the duration of the pre-session course.

For further information on our study abroad programme and for application forms and information on how to apply, please visit our website at: www.birmingham.ac.uk/students/studyabroad/incomingstudents.aspx

Birmingham GLOBAL



Science without Borders (Ciencia sem Fronteiras)

The University is delighted to be one of the UK institutions selected to participate in the Science without Borders Scheme. If you are an undergraduate or PhD student from Brazil find out more at www.birmingham.ac.uk/students/studyabroad/incomingstudents.aspx



'The University of Birmingham is amazing because it holds something for everyone. Here I found both a challenging academic atmosphere as well as a great student-body experience.'

Nathan Lafferty, on a Study Abroad year from Iowa State

Life after Birmingham

THE EXPERIENCES YOU HAVE AT UNIVERSITY, AND THE FRIENDS YOU MAKE, WILL LAST A LIFETIME, MEANING THE **BENEFITS OF STUDYING AT BIRMINGHAM EXTEND WAY BEYOND GRADUATION.**

FACT

Our graduate community comprises more than **170,000** alumni in more than **190** countries around the world.

Join our community

Our global community of 170,000 former students (alumni) includes Nobel Prize winners, scientists, journalists, politicians, athletes, authors, musicians, actors and business people living in more than 190 countries around the world.

From the moment you come to Birmingham, you automatically become part of this community and can access a host of benefits before and after graduation, from careers support to regular networking events.

Alumni groups around the world – from Australia to China, Greece, the US and more – provide the chance to keep in touch with fellow alumni locally, share memories, and build valuable professional connections. Many groups are quite informal, arranging one or two social events or reunions per year; while others meet more regularly to network professionally or help the University with student recruitment.

Many groups and individuals also choose to support the University's Circles of Influence fundraising campaign. This innovative campaign aims to raise £160 million to help change lives at Birmingham and internationally, from fighting cancer in Africa to funding scholarships or providing modern new facilities on campus such as the proposed sports centre and new University library. For details see www.birmingham.ac.uk/circlesofinfluence

Hundreds of our alumni enjoy volunteering with the University by sharing their career experiences with current students, offering invaluable professional support and advice. From guest lectures and mentoring to providing work experience placements, our graduates are actively encouraged to share their skills and knowledge with the next generation of students.



Students celebrate completing their studies in the traditional way

Life after Birmingham

After graduation you continue to have access to a wide range of services and facilities that support both your personal and professional development.

You can access the Careers and Employability Centre in the year after you graduate, meeting with a professional advisor at our drop-in centre or taking advantage of the service 'virtually' through the online vacancy system and other online tools. The Centre also stages a wide range of workshops and events designed to help improve your employment skills.

In addition, our LinkedIn group (search for University of Birmingham Alumni and Friends), Facebook page (University of Birmingham Alumni) and Twitter feed [@birminghamalum](https://twitter.com/birminghamalum) have all the latest news from Birmingham and are a great way to share memories of your time here. Your relationship with Birmingham will last a lifetime, supporting you as you progress through your career.

Learn more www.birmingham.ac.uk/alumni

'Joining an alumni group is a great way to keep in touch with the University and classmates after graduation. Attending group events provides an opportunity to network with other alumni, to make professional contacts, to meet with academics when they travel overseas and to meet students who are planning to take up a place at the University.'

Nikos Megas, MBA International Business, 2002 (Greece)

immerse

YOURSELF IN THE BIRMINGHAM EXPERIENCE

'One of the best things about being a student at the University of Birmingham is the access you have to a diverse and vibrant social life.'

There are so many student societies to choose from, including political interests, musical interests, to languages, cultures and hobbies. There is something to do all the time and it's really made me feel at home!

Olivia Vicol

*BA in Media, Culture and Society
student from Romania and
member of the Vale Festival
organising committee.*



bit.ly/birminghamvideos



The campus

OUR STUNNING CAMPUS, COMBINING TRADITIONAL BUILDINGS AND STATE-OF-THE-ART FACILITIES, OFFERS AN INSPIRING BACKDROP TO YOUR STUDIES – **A PEACEFUL, THRIVING COMMUNITY ON THE DOORSTEP OF ONE OF EUROPE'S MOST DYNAMIC AND CULTURALLY DIVERSE CITIES.**

Life at Birmingham is exciting and diverse. The 250-acre green and leafy site has everything a small town would offer you, including supermarkets, banks, cafés, restaurants, sports facilities, our own train station, accommodation and teaching space in a safe, friendly environment.

Investing in your future

Our campus is always evolving and we continually invest in campus improvements to provide you with state-of-the-art social and learning spaces.

Our future plans include a £175 million redevelopment of our historic campus. This will include a new sports centre and library.

These exciting new plans complement the prestigious Bramall Music Building, opened in 2012; boasting the most flexible performance space at a UK university along with a 450-seat auditorium, it benefits not only students and staff but also the local community.



The Barber Institute of Fine Arts



Winterbourne House and Garden



The Guild of Students



Facilities at a glance:

- Libraries
- The Guild of Students
- Opticians
- Hairdresser
- Munrow Sports Centre
- Barber Institute of Fine Arts
- Winterbourne House and Garden
- Chaplaincy
- Banks
- Fresh fruit and vegetable stall
- Supermarkets
- Travel agent

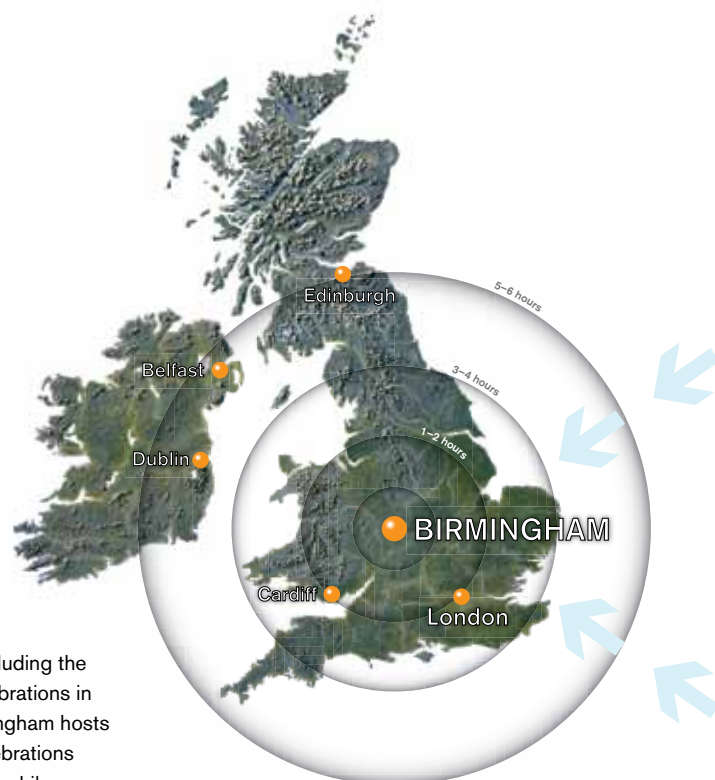


The new Bramall Music Building



The city of Birmingham

BIRMINGHAM IS AN EXCITING DESTINATION FULL OF ACTIVITIES AND EXPERIENCES FOR YOU TO MAKE THE MOST OF YOUR TIME HERE. **A DIVERSE CITY, WITH ONE OF THE YOUNGEST POPULATIONS IN THE UK,** BIRMINGHAM HAS A CULTURAL AND INTELLECTUAL HERITAGE WITH A WARM, WELCOMING COMMUNITY.



Birmingham city centre, just three miles away from our Edgbaston campus, is an exciting European destination. The history of the city saw scientists, inventors and natural philosophers including Erasmus Darwin, Matthew Boulton, James Watt, Joseph Priestley and Josiah Wedgwood gather here to engage in intellectual debates – their conversations were the brainpower behind the Industrial Revolution. These days we are developing the leaders of today through our education, and the city is bursting with young talent and start-up companies.

Birmingham is an excellent student city – with offers and nightlife specifically geared towards creating special experiences for you. If party nights aren't your thing, there is live music of all types, comedy clubs, theatres and world-class performances from the Royal Ballet for you to enjoy.

As one of the UK's most diverse cities, over 30% of Birmingham's residents are of minority ethnic origin, bringing a rich cultural mix to the city. This is expressed through food, dance, theatre and celebrations. All major religious

festivals are celebrated here, including the dazzling Chinese New Year celebrations in our very own China Town. Birmingham hosts the biggest St Patrick's Day celebrations outside of Dublin and New York, while an estimated 90,000 people filled the streets of Birmingham to celebrate the Sikh festival of Vaisakhi in April 2011 – as many as 32,000 took part in the festival's two processions.

With its enviable central location, Birmingham is host to a wide range of exciting events and festival celebrations. The NIA, LG Arena and more intimate O2 Academy are the ideal venues for musical performances. The city boasts the UK's largest annual Artsfest, celebrating the region's art and cultural performances. The world-famous NEC is the base for international events such as the Motor Show and the Good Food Show.

Birmingham is ideally placed for trips throughout the UK and Europe via the international airport. We are within easy reach of famous towns such as Stratford-upon-Avon, the historic city of Oxford and the mountains of Wales.



A green city



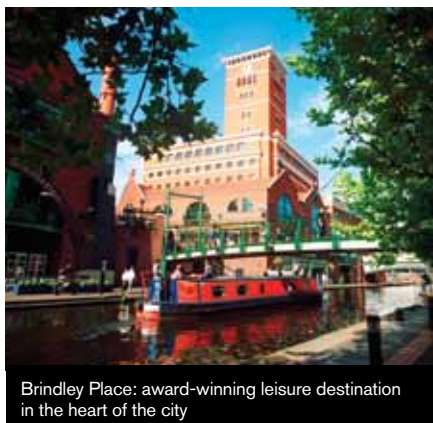
Town Hall, Birmingham

'I found Birmingham as a city very safe with good access for transportation. I have travelled to so many places in the UK such as London, Bristol and Manchester.'

Wafa Janahi, Law student from Bahrain

'I simply adored living in Birmingham, where I developed strong ties with members of the community. I have gone back to Birmingham as often as I can and even took my fiancé, convincing him of what a great city Birmingham is and how friendly Brummies are! A proudly born-and-raised Mexican, I think of Birmingham as my second city!'

*Lourdres Motta-Murguía,
MSc Health Economics and Health Policy, Mexico*



Brindley Place: award-winning leisure destination in the heart of the city



The Birmingham Museum and Art Gallery



Selfridges at the Bullring Shopping Centre

Birmingham highlights

- With a **thriving independent arts scene**, you can immerse yourself in art, film, performance, music and more. Birmingham's annual Artsfest is the UK's biggest free arts festival, while annual film event, Flatpack Festival, attracts 6,000 visitors to the city from across the world.
- Birmingham is famous for its Indian connections and cuisine. Over 100 Balti houses, many of which can be found in the city's famous **Balti Triangle**, attract over 20,000 visitors each week.
- Just a short distance from the city centre is **Sutton Park**, the largest urban park in Europe outside of a capital city. Further afield, the Malvern Hills, the pretty Cotswold villages and Warwick Castle are popular destinations for day trips.
- The **Birmingham Hippodrome** is one of the busiest and most popular theatres in the UK with over 520,000 visitors every year.
- 18% of the UK's computer games workforce is located in the region, including the brains behind Kinect – the fastest-selling consumer gadget ever – at **Microsoft's Rare Ltd**.
- Over 50,000 people watch inspirational and varied musical performances by the world famous **City of Birmingham Symphony Orchestra (CBSO)** every year – that's more than any other UK orchestra. And with Andris Nelsons, the extraordinarily precise, boundlessly enthusiastic and highly sensitive young conductor – the crowds are expected to grow.
- Birmingham has more **Michelin-starred restaurants** than any other English city outside London, with local stars Glynn Purnell, Luke Tipping and Richard Turner flying the flag for the city's fine dining.
- Every Christmas millions of people flock to the city centre to enjoy the **Frankfurt Market**, the biggest outdoor Christmas market in the UK, selling traditional handmade toys, decorations, jewellery and other gift items, as well as German mulled wine, beer and grilled sausages.

'I was astonished when I saw how beautiful Birmingham was. The buildings, the art, the use of water. It is an extraordinary jewel of a city... I was bowled over when I was there. It is quite wonderful.'

Bill Clinton, Former US President



China Town, Birmingham

Accommodation

WE WANT YOU TO FEEL AT HOME DURING YOUR STAY AT BIRMINGHAM. FOR THIS REASON **WE GUARANTEE ACCOMMODATION TO INTERNATIONAL STUDENTS FOR THEIR FIRST YEAR OF ACADEMIC STUDY.***

With so many options on the type of accommodation available, we are confident that you will find a home to suit you.

Birmingham offers a range of accommodation including self-catered flats with shared bathroom and kitchen facilities, where small groups of students live together and cook for themselves. We also have the option of en suite rooms where you have your own bathroom along with a selection of modern self-contained studio apartments. This includes both Metchley Hall and Mansion Brook. Both of these sites offer modern self-contained living within walking distance of the University.

You can also choose one of our Meal Plan rooms, offering a flexible weekly budget that is tailored around your University schedule. We have long opening hours and a wide selection of restaurants and coffee shops. Our students enjoy the Meal Plan as it adds to the social wellbeing of the first year at University.

We will try and place students in single sex accommodation where requested. All accommodation is furnished, has heating and internet access. For more information about our accommodation, 360-degree virtual tours of the rooms and the online application form please visit our website:
www.birmingham.ac.uk/accommodation



Helping you to feel at home Student Mentors

Student Mentors help students living in University accommodation settle into their life at Birmingham. They are there to provide advice and guidance on a variety of issues and provide numerous activities and events to help you enjoy your time here.

www.guildofstudents.com/studentmentors

* To be eligible for accommodation you must have firmly accepted our offer to study at Birmingham and submitted your online accommodation application by 31 May 2013 for EU students and 31 July 2013 for international students.





Metchley Hall



You may choose to live off campus in privately rented accommodation or one of our University owned houses in the local area of Selly Oak. For more information on the University owned properties please visit our website at www.birmingham.ac.uk/accommodation or to obtain an application form please email us at unimanagedaccom@contacts.bham.ac.uk

There is a range of private accommodation available for students, couples and families with a dedicated website www.birminghamstudentpad.co.uk where you can search for properties 24 hours a day.

Our accommodation service staff in LIVING offer a contract checking service and advice and guidance on all aspects of renting in the private sector. If you have any queries please email us at: birminghamstudentpad@contacts.bham.ac.uk

Accommodation Services also organise a house-hunting event in September to assist students in finding accommodation. For further information please visit our website www.birmingham.ac.uk/accommodation



Campus highlights

Shopping in the Guild of Students

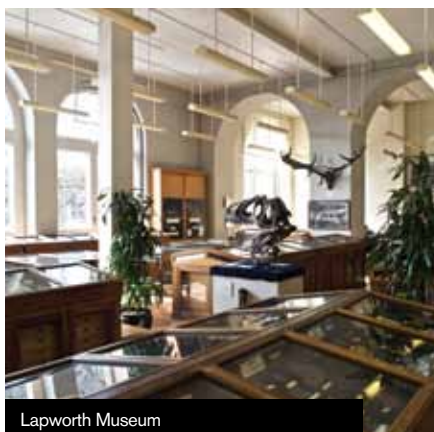
The Guild is home to a variety of retail outlets, including an English and Asian supermarket, a University-branded clothing shop, a travel agent (so that you can organise flights and holidays – with great student discounts) and SHAC, a one-stop shop for rented accommodation in the local area.

Culture at Birmingham

From art galleries and museums to collections of rare books and archives – Birmingham has more culture than many universities. Our Barber Institute of Fine Arts is an award-winning gallery, containing one of the finest small collections of European art in the UK. It is the perfect place for relaxation outside of your studies. The Lapworth Museum houses the most extensive collections of fossils, minerals and rocks in the Midlands. The Museum dates back to 1880, and is one of the oldest specialist geological museums in the UK. We even have our own botanical gardens, which are free for students to visit.



Barber Institute



Lapworth Museum

University of Birmingham Sport (UBSport)

Ranked second in the UK for our sport programmes, we have an excellent international reputation for our facilities. Birmingham attracts athletes from across the world to study, train and compete. The Jamaican Track and Field Team chose the University as their training camp for the London 2012 Olympics. Whether you are an aspiring athlete or simply hoping to stay fit and enjoy sporting activities during your studies, our Munrow Sports Centre offers fitness classes, a swimming pool, athletics track and much more. If you enjoy team sports, join one of our clubs which get together weekly to train on our pitches.



Other campuses

Alongside the Edgbaston campus we also have the Selly Oak campus: an 80-acre site with a village atmosphere and centrally located facilities. It is home to the Graduate Institute of Theology and Religion and the Selly Oak Visual Arts Centre.

The Ironbridge Institute is a partnership between the University of Birmingham and the Ironbridge Gorge Museum Trust and provides a unique experience for postgraduate students studying programmes in heritage management.

Our Shakespeare Institute is based in Stratford-upon-Avon, offering postgraduate students and scholars an academic experience unequalled by any other university.



The Shakespeare Institute



Winterbourne botanic gardens

Essential information

Entry requirements

In order to be offered a place of study at the University of Birmingham, you will need to meet the general entry requirements of the University, and any specific requirements of your programme.

We welcome applications from international students and accept a wide number of qualifications, including A levels, the International and French Baccalaureate and many more country-specific qualifications, which will depend on the country you have previously studied in.

Further information on the types of qualification that we would expect to see in applicants from your country can be found on your country page at: www.birmingham.ac.uk/international/students/country

Foundation Programme

Successful completion of your chosen pathway of the Birmingham Foundation Academy guarantees you a place on your chosen degree programme at Birmingham. Please see page 16 for more information, including English language requirements at this level, and visit the website www.birmingham.ac.uk/foundation-academy

English language requirements

You will need to demonstrate a certain level of English in order to meet the demands of your programme. The level will depend on the programme that you choose. An indication of entry requirements is given in the table on the right, and you will be required to show evidence of this when offered a place to study.

English language courses

Pre-sessional English programmes are available before the start of the academic year for students who do not have the required level of English or who wish to improve their skills before they arrive. Visit www.eisu.bham.ac.uk for more information.

Academic area	IELTS	TOEFL IBT	Pearson Test of English (PTE)*
Undergraduate requirements:			
Engineering and Science	6.0 overall, with no less than 5.5 in any band	87 overall with no less than: 22 in Reading, 21 in Listening, 23 in Speaking, 21 in Writing	PTE Academic 51 in all four skills
Business, Economics, Political Science, International Relations, Social Policy, Sociology, Education, History, English and Humanities subjects, Medical Science, Psychology, Sport and Exercise Science	6.5 overall, with no less than 6.0 in any band	93 overall with no less than: 22 in Reading, 21 in Listening, 23 in Speaking, 21 in Writing	PTE Academic 59 in all four skills
Law, Nursing, Physiotherapy	7.0 overall, with no less than 6.5 in any band	100 with no less than: 23 in any band	PTE Academic 67 in all four skills
Medicine, Dentistry	7.0 overall, with no less than 7.0 in any band	100 with no less than: 25 in any band	PTE Academic 67 in all four skills

Postgraduate requirements

Engineering and Science	6.0 overall, with no less than 5.5 in any band	87 overall: with no less than 22 in Reading, 21 in Listening, 23 in Speaking, 21 in Writing	PTE Academic 51 in all four skills
Arts* Business** Education Health Sciences Public Policy Social Sciences	6.5 overall, with no less than 6.0 in any band	93 overall: with no less than 22 in Reading, 21 in Listening, 23 in Speaking, 21 in Writing	PTE Academic 59 in all four skills
Medicine, Dentistry, Research Education	7.0 overall, with no less than 6.5 in any band	100 overall: with no less than 23 in any band	PTE Academic 67 in all four skills
Law (LLM)	7.0 overall, with no less than 6.5 in any band	100 overall: with no less than 22 in Reading, 21 in Listening, 23 in Speaking, 21 in Writing	PTE Academic 67 in all four skills

* Applies to all programmes in the School of English, Drama, American and Canadian Studies, the School of History and Cultures, the Institute of Archaeology and Antiquity, the School of Language, Cultures, Art History and Music, and the School of Philosophy, Theology and Religion

** Some Business programmes require higher grades. Please see the Business School website www.birmingham.ac.uk/schools/business for more details.

For alternative qualifications see the list online: www.birmingham.ac.uk/students/requirements/requirements-pg/international

How to apply

For information on how to apply for the Birmingham Foundation Academy, please visit www.birmingham.ac.uk/students/foundation-academy/how-to-apply.aspx

NEW

How and when to apply for an undergraduate course

- 1 Applications should be made through the Universities and Colleges Admissions Services (UCAS) between 1 September (prior to the year in which you wish to study) and 30 June (in the year you wish to study). It is advisable to apply early as the most popular courses fill up quickly. If you are from the European Union you will need to apply before 15 January.
- 2 Request an application form or apply online via UCAS at www.ucas.com
- 3 Complete the application form with up to five choices of universities. Send your application to UCAS.
- 4 UCAS send copies of your application form to each of the universities that you have listed. Each university will decide whether to make you an offer. Each application is assessed individually based on academic merit. Universities may ask you to achieve certain exam results. Offers and relevant conditions will be sent to UCAS.
- 5 UCAS will forward you responses from the universities to which you have applied.
- 6 UCAS will ask you to decide which two offers, if any, you want to hold while you wait for all your results. You must respond to UCAS with your decision and not directly to the universities.
- 7 If you meet the condition of your offer, the institution will confirm your place.
- 8 If you do not meet the conditions, but your results are acceptable and places are still available, they may also confirm your place.
- 9 If you do not have a place by August you should enter into the Clearing process.

For information on how to apply to spend time at the University of Birmingham as part of our Study Abroad programme see page 22 or visit www.birmingham.ac.uk/students/studyabroad/incomingstudents.aspx

How and when to apply for a postgraduate taught course

- 1 Postgraduate taught applications are made directly to the University. There are no official closing dates. However, it is recommended that you apply early as the most popular courses fill up quickly and, if accepted, to allow sufficient time to obtain a visa.
- 2 You can access our online Postgraduate Prospectus or request a hard copy to be sent to you. (www.birmingham.ac.uk/students/courses/postgraduate).
- 3 Apply online at the University's website via the course finder pages (www.birmingham.ac.uk/students/courses). The link on the programme page will take you directly to the application form.
- 4 We will decide whether to make you an offer. This normally happens four to six weeks after receiving your application and supporting documents (note that an application cannot be considered until the necessary supporting documents, eg, references, transcript, research proposal, have been received). You will be able to track the progress of your application and receive communications from the University via the Applicant Portal. If made an offer, this will be either unconditional or conditional. An unconditional offer means that you have already met the University's entrance requirements and there are no conditions attached to your offer of a place. A conditional offer means that you have not yet satisfied the University's entrance requirements. Your offer letter will detail the requirements still to be met by you.
- 5 If you accept and meet the conditions of the offer, we will confirm your place. International (non-EEA) students will also need to consider certain immigration requirements when accepting their offer and when preparing for their student visa. For further advice, please go to: www.birmingham.ac.uk/international/students/visas or the UK Border Agency website: www.ukvisas.gov.uk

How and when to apply for a postgraduate research course

- 1 Postgraduate research applications are made directly to the University. There is no official closing date. You can access our online prospectus or request a copy to be mailed to you.
- 2 To ensure that the necessary facilities and supervisors are available for your study it is advisable that you contact the relevant postgraduate research tutor prior to submitting an application, to discuss the research proposal informally – check our online prospectus for further details www.birmingham.ac.uk/students/courses/postgraduate/research
- 3 Apply online at the University's website via the course finder pages (www.birmingham.ac.uk/students/courses). The link on the programme page will take you directly to the application form.
- 4 We will decide whether to make you an offer. This normally happens four to six weeks after receiving your application and supporting documents (note that an application cannot be considered until the necessary supporting documents, eg, references, transcript, research proposal, have been received). You will be able to track the progress of your application and receive communications from the University via the Applicant Portal. If made an offer, this will be either unconditional or conditional. An unconditional offer means that you have already met the University's entrance requirements and there are no conditions attached to your offer of a place. A conditional offer means that you have not yet satisfied the University's entrance requirements. Your offer letter will detail the requirements still to be met by you.
- 5 If you accept and meet the conditions of the offer, we will confirm your place. International (non-EEA) students will also need to consider certain immigration requirements when accepting their offer and when preparing for their student visa. For further advice, please go to: www.birmingham.ac.uk/international/students/visas or the UK Border Agency website: www.ukvisas.gov.uk

Funding your study

THE FOLLOWING INFORMATION AIMS TO GIVE YOU AN IDEA OF HOW MUCH YOU CAN EXPECT TO PAY FOR YOUR UNIVERSITY EDUCATION, ALONG WITH SOME ESSENTIAL INFORMATION ON THE FUNDING AVAILABLE TO ASSIST YOU.

Tuition fees

Your tuition fees will be confirmed in your offer letter. We strongly advise you to check the latest fees information with the University before applying. www.birmingham.ac.uk/internationalfinance

Living costs

The cost of living varies throughout Britain. Students in Birmingham enjoy lower living costs than many other cities, though this of course depends on your lifestyle.

We estimate that the cost of living is approximately £250 a week (£10,500 for a year), including accommodation. If you are bringing dependants with you, you should allow approximately £3,500–£4,500 extra per year for a spouse or civil partner and £2,500–£3,000 extra per year for each child. This is a realistic figure based on the cost of living in the UK.

Scholarships and funding opportunities

International Postgraduate Scholarship
International Postgraduate Scholarships are awarded annually by the University for outstanding students undertaking a one-year Masters degree programme. Candidates must apply by 31 May 2013.

Subject-specific scholarships

For further information please visit the web pages for the relevant college or school on the University of Birmingham website www.birmingham.ac.uk/schools
We also have various subject-based bursaries, grants and scholarships on offer.

Joint University of Birmingham and China Scholarship Council PhD scholarships

In honour of one of our most notable Chinese graduates, Li Siguang, the University of Birmingham and the China Scholarship

As a guide, the tuition fees for the academic year 2012–2013 are:

Fee bands	Undergraduate and postgraduate research	Taught postgraduate
Band A (Clinical)	£27,510	n/a
Band B (Laboratory)	£15,150	£16,200
Band C	£12,930	£14,490
Band D	£11,730	£12,750

For guidance on which band your programme falls into visit www.birmingham.ac.uk/internationalfinance

Council is pleased to announce jointly funded PhD scholarships for exceptional students from China commencing their studies at Birmingham in 2013.

Joint University of Birmingham and Santander Scholarship

In partnership with Banco Santander, the University of Birmingham is delighted to offer eight postgraduate scholarships worth £5,000 each to outstanding candidates from Latin America and the USA.

University of Birmingham USA Scholarship Programme

The University of Birmingham, in partnership with the US Alumni Foundation is pleased to announce the launch of a joint scholarship scheme for 2013 entry. Scholarships each worth up to £15,000 will be awarded to two exceptional candidates from the USA.

Islamic Development Bank – University of Birmingham International PhD Scholarship Programme

The Islamic Development Bank (IDB) is a multilateral financial development institution based in Jeddah, Saudi Arabia and has 56 member countries across Asia, Africa, Europe and Latin America. The IDB Merit Scholarship Programme (MSP) contributes to the development of science and hi-technology in its member countries.

Other scholarship awards

We work in partnership with a number of organisations and scholarship bodies including British Chevening Scholarships, the Said Foundation, Marshall Scholarships and the Commonwealth Scholarship Commission to offer scholarships to talented applicants who meet specific criteria.

For further information and to apply for all Scholarships visit www.birmingham.ac.uk/internationalscholarships

Other sources of funding

For other sources of funding, we would advise that you contact the following:

- The British Council, Embassy or High Commission in your home country
- The Ministry or Department of Education in your home country
- Your current academic institution

Part-time employment

The Guild of Students offers a dedicated Job Zone, which can help you find part-time employment should you need to support your living costs. All jobs are strongly vetted to ensure that they are suitable for students and advice is also available on how to balance working part-time with your studies.

www.guildofstudents.com/jobshop

A–Z of undergraduate programmes

A

Accounting and Finance
 African Studies
 African Studies with Anthropology
 African Studies with Development
 African Studies and English Language/Literature
 African Studies and French Studies
 African Studies and Geography
 African Studies and History
 African Studies and History of Art
 African Studies and Political Science
 American and Canadian Studies
 American and Canadian Studies and Anthropology
 American and Canadian Studies and English Language/Literature
 American and Canadian Studies and Film Studies
 American and Canadian Studies and History
American and Canadian Studies with year abroad **NEW**
 American Literature, English and
 American Studies, Business and
 Ancient and Medieval History
 Ancient History
 Anthropology and African Studies
 Anthropology and American and Canadian Studies
 Anthropology and Classical Literature and Civilisation
 Anthropology and History
 Anthropology and History of Art
 Anthropology and Political Science
 Applied Golf Management Studies
 Applied Mathematics, Theoretical Physics and Archaeology
 Archaeology and Ancient History
 Archaeology and Ancient History and Computer Science
 Archaeology and Ancient History and Geography
 Archaeology and Ancient History and History
 Archaeology and Anthropology
 Archaeology and Geology
 Art, History of
 Artificial Intelligence and Computer Science

B

Banking, Money, Finance and
 Biochemistry
 Biochemistry, Medical
 Biochemistry (Genetics)
 Biochemistry as part of Natural Sciences
 Biochemistry with Biotechnology
 Biochemistry with Molecular Cell Biology
 Biochemistry with Professional Placement
 Biochemistry with Study in Continental Europe
 Biological Sciences
 Biological Sciences (Biotechnology)
 Biological Sciences (Environmental Biology)
 Biological Sciences (Genetics)
 Biological Sciences (Microbiology)
 Biological Sciences (Plant Biology)
 Biological Sciences (Zoology)
 Biological Sciences with Professional Placement
 Biological Sciences with Study in Continental Europe
 Biology, as part of Natural Sciences
 Biology, Human
 Biomedical Materials Science
Birmingham Foundation Academy **NEW**
 Business and American Studies
 Business (International)
 Business Management
 Business Management (Year in Industry)
 Business Management with Communications

C

Canadian Studies, American and
 Catalan as part of Modern Languages
 Certificate in English Law
 Chemical and Energy Engineering
 Chemical and Energy Engineering with Industrial Study
 Chemical Engineering
 Chemical Engineering Foundation Year
 Chemical Engineering (International Study)
 Chemical Engineering with Industrial Study
 Chemical Engineering with Business Management
 Chemical Engineering with International and Industrial Study
 Chemistry
 Chemistry (International Foundation Programme)
 Chemistry as part of Natural Sciences
 Chemistry with a Modern Language
 Chemistry with Analytical Science

Chemistry with Bioorganic Chemistry
 Chemistry with Business Management
 Chemistry with Foundation Year
 Chemistry with Industrial Experience
 Chemistry with Pharmacology
 Chemistry with Study Abroad
 Childhood, Culture and Education
 Chinese (Mandarin) as part of Modern Languages
 Civil and Energy Engineering
 Civil Engineering
 Civil Engineering with Business Management
 Civil Engineering with Foundation Year
 Civil Engineering with Industrial Experience
 Civil Engineering with International Study
 Classical Literature and Civilisation
 Classical Literature and Civilisation and Anthropology
 Classical Literature and Civilisation and Drama and Theatre Arts
 Classical Literature and Civilisation and English Language/Literature
 Classical Literature and Civilisation and History
 Classical Literature and Civilisation and History of Art
 Classical Literature and Civilisation and Italian Studies
 Classical Literature and Civilisation and Philosophy
 Coaching Science, Sport, Physical Education and
 Computer Science
 Computer Science, Artificial Intelligence and
 Computer Science as part of Natural Sciences
 Computer Science/Software Engineering
 Computer Science with Business Management
 Computer Systems Engineering
 Computer Systems Engineering with Business Management
 Cosmology, Physics with Particle Physics and
 Creative Writing, English with

D

Drama and Theatre Arts
 Drama and Theatre Arts and Classical Literature and Civilisation
 Drama and Theatre Arts with English Language/English Literature
 Drama and Theatre Arts with French Studies
 Drama and Theatre Arts with Music

Learn more: www.birmingham.ac.uk/students/courses/undergraduate

E

Earth Sciences as part of Natural Sciences
 Economic and Social History
 Economics
 Economics and Geography
 Economics and Planning
 Economics and Political Science
 Economics with a language (German, Italian, Japanese, Portuguese, Spanish)
 Education (Childhood, Culture and Education)
 Electrical and Energy Engineering
 Electronic and Electrical Engineering
 Electronic and Electrical Engineering with Foundation Year
 Electronic Engineering with Business Management English
 English and American Literature
 English Language
 English Language/Literature and African Studies
 English Language/Literature and American and Canadian Studies
 English Language/Literature and Classical Literature and Civilisation
 English Language/Literature and Drama and Theatre Arts
 English Language/Literature and French Studies
 English Language/Literature and German Studies
 English Language/Literature and Hispanic Studies
 English Language/Literature and History
 English Language/Literature and Italian Studies
 English Language/Literature and Music
 English Language/Literature and Philosophy
 English Language/Literature and Russian Studies
 English Language/Literature and Theology
 English Literature and History of Art
 English Law (Certificate)
 English with Creative Writing
 Environmental Geoscience
 Environmental Geoscience with an International Year
 Environmental Science
 Environmental Science with Professional Placement Abroad (Australasia)
 European Politics, Society and Economics
 European Studies, Modern Languages and Exercise Sciences, Sport and

F

Finance, Accounting and
 Finance, Money, Banking and
 French Studies
 French Studies and African Studies
 French Studies and Computer Science
 French Studies and Drama and Theatre Arts
 French Studies and English Language/Literature
 French Studies and Geography
 French Studies and German Studies
 French Studies and Hispanic Studies
 French Studies and History
 French Studies and History of Art
 French Studies and Italian Studies
 French Studies and Portuguese
 French Studies and Russian Studies
 French Studies and Mathematics
 French Studies and Music
 French Studies and Philosophy

G

Genetics – see Biochemistry, Biological Sciences
 Geography
 Geography as part of Natural Sciences
 Geography and Geology
 Geography and African Studies
 Geography and Archaeology and Ancient History
 Geography and Economics
 Geography and German Studies
 Geography and Hispanic Studies
 Geography and History
 Geography and Italian Studies
 Geography and Russian Studies
 Geography and Urban and Regional Planning
 Geography with a Year Abroad
 Geology
 Geology and Archaeology
 Geology and Geography
 Geology with an International Year/Year Abroad
 Geoscience, Environmental
 German Studies
 German Studies and English Language/Literature
 German Studies and French Studies
 German Studies and Geography
 German Studies and Hispanic Studies
 German Studies and History
 German Studies and Italian Studies

German Studies and Mathematics
 German Studies and Music
 German Studies and Portuguese
 German Studies and Russian Studies
 Golf Management Studies, Applied
 Graduate Diploma in Law

H

Hispanic Studies
 Hispanic Studies and English Language/Literature
 Hispanic Studies with French Studies
 Hispanic Studies and Geography
 Hispanic Studies and German Studies
 Hispanic Studies and History
 Hispanic Studies and Italian Studies
 Hispanic Studies and Portuguese
 History
 History and African Studies
 History and American and Canadian Studies
 History and Anthropology
 History and Archaeology and Ancient History
 History and Classical Literature and Civilisation
 History and English Language/Literature
 History and French Studies
 History and Geography
 History and German Studies
 History and Hispanic Studies
 History and History of Art
 History and Philosophy
 History and Political Science
 History and Russian Studies
 History and Theology
 History of Art
 History of Art and African Studies
 History of Art and Anthropology
 History of Art and Classical Literature and Civilisation
 History of Art and English Literature
 History of Art and French Studies
 History of Art and History
 History of Art and Italian Studies
 History of Art and Russian Studies
 Human Biology
 Human Biology with Professional Placement

A–Z of undergraduate programmes

I

International Business
 International Business with Communications
 International Business with Language
 (French, German, Italian, Japanese,
 Mandarin, Russian, Spanish)
 International Relations
 International Relations with a language
 (French, German, Spanish)
 International Relations with Economics
 International Relations with Political Science
 Italian Studies
 Italian Studies and Classical Literature
 and Civilisation
 Italian Studies and English Language/Literature
 Italian Studies and French Studies
 Italian Studies and Geography
 Italian Studies and German Studies
 Italian Studies and Hispanic Studies
 Italian Studies and History of Art
 Italian Studies and Music
 Italian Studies and Russian Studies

J

Japanese – see Business, Economics and
 Modern Languages

L

Languages – see Modern Languages
 Law
 Law (Certificate in English Law)
 Law, Graduate Diploma in
 Law with Business Studies
 Law with French
 Law with German
 Law, LLB for Graduates
Liberal Arts and Sciences NEW

M

Management, Business
 Materials Engineering
 Materials Engineering with Industrial Experience
 Materials Engineering with International Study
 Materials Science, Sports and
 Materials Science and Energy Engineering
 Materials Science and Engineering with
 Business Management
 Materials Science and Technology
 Mathematical Economics and Statistics

Mathematics
 Mathematics as part of Natural Sciences
 Mathematics and Computer Science
 Mathematics and Sports Science
 Mathematics Foundation Year
 Mathematics with Business Management
 Mathematics with Philosophy
 Mathematics with Study in Continental Europe
 Mechanical and Materials Engineering
 Mechanical Engineering
 Mechanical Engineering (Automotive)
 Mechanical Engineering with Foundation Year
 Mechanical Engineering with Industrial Year
 Medieval History, Ancient and
 Medical Biochemistry
 Medical Science
 Medicine and Surgery
 Medicine and Surgery (Graduate Entry Course)
 Metallurgy
 Metallurgy and Materials with Foundation Year
 Microbiology – see Biological Sciences
 Modern Languages (French, German, Italian,
 Portuguese, Spanish, Catalan, Mandarin
 Chinese, Japanese, Russian)
 Modern Languages and European Studies
 Modern Languages with Business Management
 Modern Languages with Film Studies
 Money, Banking and Finance
 Money, Banking and Finance with a language
 (German, Italian, Portuguese, Spanish)
 Music (musicology, performance and
 composition)
 Music and Drama and Theatre Arts
 Music and English Language/Literature
 Music and French Studies
 Music and German Studies
 Music and Italian Studies
 Music and Mathematics
 Music and Russian Studies

N

Nanoscale Physics, Physics with
 Natural Sciences
 Natural Sciences with Study in Continental
 Europe
 Nuclear Engineering
 Nuclear Science and Materials
 Nursing

P

Palaeobiology and Palaeoenvironments
 Particle Physics and Cosmology, Physics with
Pharmacy NEW
 Philosophy
 Philosophy, Mathematics with
 Philosophy, Religion and Ethics
 Philosophy and Classical Literature and
 Civilisation
 Philosophy and English Language/Literature
 Philosophy and French Studies
 Philosophy and History
 Philosophy and Mathematics
 Philosophy and Political Science
 Philosophy and Sociology
 Philosophy and Theology
 Physics
 Physics as part of Natural Sciences
 Physics – Theoretical Physics and
 Applied Mathematics
 Physics (International Study)
 Physics and Astrophysics
 Physics and Astrophysics (International Study)
 Physics Foundation Year
 Physics with Nanoscale Physics
 Physics with Particle Physics and Cosmology
 Physiotherapy
 Planning – Geography and Urban and Regional
 Planning
 Planning – Spatial Planning and Business
 Management
 Planning and Economics
 Planning and Social Policy
 Plant Biology – see *Biological Sciences*
 Political Economy
 Political Science
 Political Science, International Relations with
 Political Science and African Studies
 Political Science and Anthropology
 Political Science and Economics
 Political Science and History
 Political Science and Philosophy
 Political Science and Russian Studies
 Political Science and Social Policy
 Political Science and Sociology
 Portuguese, as part of Modern Languages
 Portuguese and French Studies
 Portuguese and German Studies
 Portuguese and Hispanic Studies
 Portuguese and Russian Studies
 Psychology

Learn more: www.birmingham.ac.uk/students/courses/undergraduate

Psychology and Psychological Practice
Psychology and Psychological Research
Psychology as part of Natural Sciences
Pure Mathematics and Computer Science

R

Regional Planning, Geography and Urban and Russian Studies
Russian Studies and English Language/
Literature
Russian Studies and French Studies
Russian Studies and Geography
Russian Studies and German Studies
Russian Studies and History
Russian Studies and History of Art
Russian Studies and International Relations
Russian Studies and Italian Studies
Russian Studies and Music
Russian Studies and Political Science
Russian Studies and Portuguese
Russian Studies with Central and East
European Studies

S

Science (Biomedical Materials)
Science (Computer)
Science (Environmental)
Science (Materials)
Science (Medical)
Science (Political)
Science (Sports and Materials)
Sciences (Natural)
Sciences (Sport and Exercise)
Social History, Economics and
Social Policy
Social Policy (Health and Social Care)
Social Policy (Housing)
Social Policy (Policing and Community Justice)
Social Policy and Planning
Social Policy and Political Science
Social Policy and Sociology
Social Work
Sociology
Sociology and Philosophy
Sociology and Political Science
Sociology and Social Policy
Spanish – as part of Modern Languages
Spatial Planning and Business Management

Sport and Exercise Sciences
Sport and Exercise Sciences as part
of Natural Sciences
Sport, Physical Education and
Coaching Science
Sports and Materials Science
Sports Science and Mathematics
Statistics, Mathematical Economics and
Surgery (Medical)

T

Technology, Materials Science and
Theatre Arts, Drama and
Theology and English Language/Literature
Theology and History
Theology and Philosophy
Theology and Religion
Theoretical Physics
Theoretical Physics and Applied Mathematics

U

Urban and Regional Planning, Geography and

W

War Studies

Z

Zoology – see Biological Sciences

**Please note all course information
is correct at time of going to print.
For the latest information please visit
[www.birmingham.ac.uk/students/
courses/undergraduate](http://www.birmingham.ac.uk/students/courses/undergraduate)**

A–Z of postgraduate programmes

A

Accounting and Finance **R**
 Advanced Chemical Engineering **T**
 Advanced Computer Science **T**
 Advanced General Dental Practice **T**
 Advanced Manipulative Physiotherapy **T**
 Advanced Manipulative Physiotherapy **T**
 Advancing Practice **T**
 African Studies **C R T**
 Air Pollution Management and Control **T**
 Air Power History Theory and Practice **T**
 American and Canadian Studies **R**
 Analytical Genomics **C**
 Antiquity **T**
 Applied and Petroleum Micropalaeontology **T**
 Applied Corpus Linguistics **T**
 Applied Educational and Child Psychology **C**
 Applied Linguistics **C R T**
 Applied Mathematics **C R**
 Applied Meteorology and Climatology **T**
 Applied Social Research **C**
 Archaeological Practice **C**
 Archaeology and Antiquity **R**
 Art History – *see History of Art*
 Atmospheric Sciences and Air Pollution **C**
 Autism (Adults) **T**
 Autism (Children) **T**

B

Bilingualism in Education **T**
 Biochemical Engineering **T**
 Biological Recording and
 Species Identification **T**
 Biomaterials **C**
 Biomedical Ethics **R**
 Biomedical Research – In Vivo **C**
 Biosciences **R**
 Brain Imaging and Cognitive Neuroscience **C**
 Brain Injury Case Management **T**
 Brain Injury Rehabilitation **T**
 British First World War Studies **T**
 British Second World War Studies **T**
 Business Administration **T**
 Byzantine Studies **C**

C

Cancer Sciences **R**
 Caribbean Literature **C**
 Chemical Biology and Biomedical Imaging **T**
 Chemical Engineering **C R**
 Chemical Engineering Science **C**
 Chemistry for Biomedical Imaging **T**
 Chemistry **R**
 Christianity – *see History of Christianity*
 Civil Engineering and Management **T**
 Civil Engineering **R T**
 Classics **C**
 Clinical Criminology **T**
 Clinical Neuropsychiatry **T**
 Clinical Oncology **T**
 Clinical Primary and Community Care **T**
 Clinical Psychology **C**
 Clinical Psychology Doctorate (ClinPsyD) **T**
 Cognition and Computational Neuroscience **C**
 Cognition and Neuroscience **C**
 Cognitive Behaviour Therapy programmes
 Cognitive Neuropsychology and Rehabilitation **C**
 Commercial Law **T**
 Communications Engineering and Networks **T**
 Communications Engineering and Networks
 with Industrial Studies **T**
 Computational Neuroscience and Cognitive
 Robotics **C**
 Computer Science **R T**
 Computer Security **T**
 Construction Management **T**
 Contemporary German Studies **C**
 Contemporary History **T**
 Contemporary Russian and East European
 Studies **T**
 Corpus Linguistics **C**
 Creative Writing **T**
 Criminal Law **T**
 Criminological Psychology **T**
 Critical Discourse, Culture
 and Communication **T**
 Cultural Heritage of Shakespeare's England **T**
 Cultural Inquiry **C T**
 Cultural Learning **T**
 Cuneiform and Ancient Near Eastern Studies **C**

D

Dentistry **R**
 Developing Countries **T**
 Development Economics **T**
 Development Management **T**
 Development Management (Aid Management) **T**
 Development Management (Human Resources
 and Development Management) **T**
 Development Management (Public Economic
 Management and Finance) **T**
 Digital Entrepreneurship **T**
 Directing and Dramaturgy **C**
 Drama and Theatre Arts Practice-based
 Research **R**
 Drama and Theatre Studies **C R**

E

Early Modern History **C**
 Earth Sciences **R**
 Economic Competitiveness and International
 Business **T**
 Economic Policy and International Business **T**
 Economic Policy **T**
 Economics **R T**
 Education and Learning **C**
 Education for Health Professionals **T**
 Educational Studies **C**
 Egyptology **C**
 Electromagnetic Sensor Networks **T**
 Electromagnetic Sensor Networks with
 Industrial Studies **T**
 Electronic and Computer Engineering **T**
 Electronic and Computer Engineering with
 Industrial Studies **T**
 Electronic Scholarly Editing **T**
 Electronic, Electrical and Computing
 Engineering **R C**
 Embedded Systems **T**
 Embedded Systems with Industrial Studies **T**
 Engineered Materials for High Performance
 Applications in Aerospace and Related
 Technologies **C**
 Engineering Management **T**
 Engineering, Sustainability and Resilience **C**
 English Language and Applied Linguistics **R**
 English Literature **T R**
 Environmental and Natural Resource
 Economics **T**
 Environmental Archaeology and
 Palaeoenvironments **T**
 Environmental Health **T**
 Environmental Science and Risk Management **R**
 European Studies **T**
 Evangelical and Charismatic Studies **T**
 Executive MBA **T**
 Exercise and Sport Sciences **C T**
 Exercise and Sports Medicine (Football) **T**

Learn more: www.birmingham.ac.uk/students/courses/postgraduate

Key

C – Combined Research and Taught

R – Research

T – Taught

F

Film and Television: Research and Production **T**
 Film Studies **C**
 Financial Engineering **T**
 Food Safety, Hygiene and Management **T**
 Forensic Mental Health Studies **T**
 Forensic Psychology Practice **T**
 Formulation Engineering **C**
 French Studies **R**
 Functional and Clinical Anatomy **T**

G

Gender Studies **C**
 Geography and Environmental Sciences **R**
 Geotechnical Engineering and Management **T**
 Geotechnical Engineering **T**
 German Studies (Social Sciences) **R**
 German Studies (Arts and Law) **R**
 Global Banking and Finance **T**
 Global Ethics **T**
 Global MBA **T**
 Golf Coaching **T**
 Graduate Entry Medical Course **T**
 Greek Archaeology **C**

H

Health Care Policy and Management **T**
 Health Economics and Health Policy **T**
 Health Economics **R**
 Health Research **C**
 Health Services Management **R**
 Health Studies **T**
 Health, Bioethics and Law **T**
 Heritage and Identity **T**
 Heritage Management **T**
 Hispanic Studies **R**
 Historic Environment Conservation **T**
 History of Art **C R T**
 History of Christianity **C T**
 History of Medicine **R**
 History of Warfare **T**
 Human and Environmental Health Impacts of Nanoscience and Nanotechnology (HEINN) **C**
 Human Computer Interaction **T**
 Human Resource Management **T**
 Human Rights and Human Values **T**
 Hydrogen, Fuel Cells and their Applications **C**
 Hydrogeology **T**

I

Immunity and Infection **R**
 Inclusion and Special Educational Needs **T**
 Industrial Project Management **T**
 Integrated Study (Business and Management) **C**
 Inter-religious Relations **C**
 International Accounting and Finance **T**
 International Business **T**
 International Commercial Law **T**
 International Development (Conflict, Security and Development) **T**
 International Development (Governance and State-building) **T**
 International Development (International Political Economy and Development) **T**
 International Development (International Political Economy and Development) **T**
 International Development (Poverty, Inequality and Development) **T**
 International Development (Urban Development) **T**
 International Development **C R T**
 International Economics **T**
 International Law, Ethics and Politics **T**
 International Law: Crime, Justice and Human Rights **T**
 International Marketing **T**
 International Money and Banking **T**
 International Relations (Contemporary Asia Pacific) **T**
 International Relations (Diplomacy) **T**
 International Relations (Gender) **T**
 International Relations (Global Economic Governance) **T**
 International Relations (Globalisation and Governance) **T**
 International Relations (International Peacekeeping) **T**
 International Relations (International Political Economy) **T**
 International Relations (Research Methods) **T**
 International Relations (Security) **T**
 International Relations (Strategic Studies in the Age of Terror) **T**
 International Relations (Terrorism and Political Violence) **T**
 International Relations **T**
 International Studies in Education **T**
 Investments **T**
 Islamic Studies **C R T**
 Italian Studies **R**
 Italian Studies: Culture and Communication **T**

L

Landscape Archaeology **T**
 Law **R**
 Leaders and Leadership in Education **C**
 Leadership and Management for Social Care **T**
 Leadership and Management for Social Work **T**
 Leadership for Health Services Improvement **T**
 Leading Public Service Change and Organisational Development **T**
 Learning and Learning Contexts **C**
 Learning Difficulties and Disabilities (Severe, Profound and Complex) **T**
 Literary Linguistics **T**
 Literature and Film **T**
 Literature and Modernity **C**
 Literature, Culture and Modernity: Victorian and Modernist **T**
 LLB for Graduates **T**
 LLM (General) **T**
 Local and Regional Economic Development (IED Accredited) **T**
 Local Government and Public Policy **C**
 Local Government Studies **R**
 Local Policy and Politics **T**

M

Management **R**
 Management Mathematics **C R**
 Managing Integration for Health and Wellbeing **T**
 Marketing Communications **T**
 Marketing **R T**
 Masters in Public Administration (MPA) **T**
 Materials for Sustainable Energy Technologies **C**
 Mathematical Finance **T**
 Mathematics and Computing in Biology and Medicine **T**
 Mathematics, Operational Research, Statistics and Econometrics (MORSE) **T**
 MBA **T**
 Mechanical Engineering **R**
 Medical and Radiation **T**
 Medicine **R**
 Medieval History **C R**
 Medieval Studies (Medieval History pathway) **T**
 Medieval Studies (Medieval Literature pathway) **T**
 Medieval Studies **C**
 Metallurgy and Materials **R**
 Modern East Mediterranean History **C**
 Modern European History **C**
 Modern Greek Studies **C**
 Modern History **R**
 Molecular and Cellular Biology **C**
 Molecular Biotechnology **T**
 Molecular Mechanistic Toxicology **C**
 Money, Banking and Finance **T**
 Multidisciplinary Optimisation **T**
 Multisensory Impairment (Deafblindness) **T**

A–Z of postgraduate programmes

Learn more: www.birmingham.ac.uk/students/courses/postgraduate

Key

C – Combined Research and Taught

R – Research

T – Taught

Music Performance Practice **R**
 Music **T**
 Musical Composition **R**
 Musicology **R**

N

Natural Computation **R**
 Neurophysiology **R**
 New Migration and Social Policy **T**
 Nuclear Decommissioning and
 Waste Management **T**

O

Occupational Health **T**
 Operations Management **T**
 Ottoman Studies **C**

P

Paediatrics and Child Health **R**
 Pentecostal and Charismatic Studies **C**
 Pharmacology **R**
 Pharmacy **C**
 Philosophy of Health and Happiness **T**
 Philosophy of Language and Linguistics **T**
 Philosophy of Mind and Cognitive Science **T**
 Philosophy of Religion and Ethics **T**
 Philosophy **R T**
 Physical Education and Sport Pedagogy **T**
 Physical Sciences of Imaging in the
 Biomedical Sciences **T**
 Physicians Assistant (Anaesthesia) **T**
 Physics and Astronomy **R**
 Physics and Technology of Nuclear Reactors **T**
 Physiology **R**
 Physiotherapy (pre-registration) **T**
 Playwriting Studies **C**
 Policy into Practice (with Integrated
 Placement) **T**
 Policy into Practice **T**
 Political Science (British Politics and
 the State) **T**
 Political Science (Research Methods) **T**
 Political Science and International Studies **R**
 European Research **R**
 Political Science **T**
 Political Theory **T**
 Politics and Religion **T**
 Postgraduate Diploma Secondary Education
 (QTS) – via 13 subject routes
 Practical Theology Doctorate **R**
 Pre-Masters Certificate in Mathematics **T**
 Primary Care Clinical Sciences **R**
 Professional Archaeology **T**
 Professional Studies (SENCO) **T**
 Professional Studies **T**

Project Management **T**
 Psychology **C R**
 Public Administration and Development **T**
 Public and Environmental Health Sciences **T**
 Public Health (Health Technology
 Assessment) **T**
 Public Health **T**
 Public Health, Epidemiology and Biostatistics **R**
 Public Management **T**
 Public Service Commissioning **T**
 Public Service **T**
 Pure Mathematics **C R**

Q

Quaker Studies **C**

R

Radio Frequency and Microwave Engineering **T**
 Radio Frequency and Microwave Engineering
 with Industrial Studies **T**
 Radioactive Waste Management and
 Decommissioning **T**
 Railway Systems Engineering and Integration **T**
 Railway Systems Integration **C**
 Religion and Culture **C**
 Renaissance, Reformation and Early Modern
 Studies **T**
 Research in Human Geography **T**
 Resilience and Urban Living **T**
 River Environmental Management **T**
 Road Management and Engineering **T**
 Robotics **T**
 Russian and East European Studies **R T**

S

School Improvement and Educational
 Leadership **T**
 Science and Engineering of Materials **C**
 Science of Occupational Health, Safety and the
 Environment **T**
 Shakespeare and Creativity **T**
 Shakespeare and Education **T**
 Shakespeare and Theatre **T**
 Shakespeare Studies **C R T**
 Shakespeare, Stratford-upon-Avon and the
 Cultural History of Renaissance England **T**
 Sikh Studies **C**
 Social and Political Theory **T**
 Social Policy **R T**
 Social Research (African Studies) **T**
 Social Research (Economic and
 Social History) **T**
 Social Research (Social Policy) **T**
 Social Research (Social Work and
 Professional Practice) **T**

Social Research (Sociology) **T**
 Social Research **T**
 Social Work **T**
 Social, Emotional and Behavioural Difficulties **T**
 Sociology **R**
 Special Applications of Linguistics **T**
 Speech and Language Difficulties **T**
 Sport and Exercise Sciences **R**
 Sport Coaching Postgraduate **T**
 Sport Policy and Management **T**
 Sports Coaching **C**
 Statistics **C R**
 Strategic Marketing and Consulting **T**
 Strategy and Procurement Management **T**

T

Teachers of Children with Hearing Impairment **T**
 Teaching English as a Foreign Language
 (TEFL) **T**
 Teaching English as a Foreign/Second
 Language (TEFL/TESL) **T**
 Theology and Religion **R**
 Theology **C**
 Toxicology **T**
 Transatlantic Studies **T**
 Twentieth Century British History **C**

U

Urban and Regional Planning (RTPI
 accredited) **T**
 Urban Regeneration and Renewal **T**
 Urban and Regional Studies **R T**
 US Foreign Policy **C**

V

Visual Impairment: Mandatory and Non-
 Mandatory Qualification for Teachers of
 Children with Visual Impairment **T**

W

Water Resources Technology and
 Management **T**
 West Midlands History **T**

**Please note all course information
 is correct at time of going to print.
 For the latest information please visit
[www.birmingham.ac.uk/students/
 courses/postgraduate](http://www.birmingham.ac.uk/students/courses/postgraduate)**

The small print – essential information for all students

THE FOLLOWING SECTION COVERS ESSENTIAL INFORMATION FOR ALL APPLICANTS, INCLUDING IMPORTANT TERMS, CONDITIONS AND REQUIREMENTS THAT THE UNIVERSITY WILL APPLY AND RELY UPON IN ITS FUTURE RELATIONSHIP WITH YOU. **THE UNIVERSITY THEREFORE CONSIDERS IT ESSENTIAL THAT YOU READ THEM CAREFULLY.**

The following documentation and legislation provides a framework through which the University and its students work together to create a positive environment for learning and academic achievement:

- The Undergraduate, Postgraduate and International Prospectuses
- The offer letter
- The University's Royal Charter, statutes, ordinances and regulations
- Code of practice and related information on admission to the University of Birmingham
- School guidelines
- Programme requirements
- Registration documentation

This documentation establishes the basis of an agreement between the University and its students as to the rights, roles and responsibilities of both parties. Admission to the University is subject to the requirement that the applicant will comply with the University's registration procedure and will duly observe this documentation. The documentation (except for the prospectus, offer letter and registration documentation) is available on the University's website at www.as.bham.ac.uk/legislation/regulations.shtml

Application and admission to the University: information and requirements

It is essential that you provide accurate and complete information in your application form. If you fail to do so the University can withdraw the offer of a place and insist that you leave. See also www.birmingham.ac.uk/students/apply

Criminal convictions

When you apply to the University, you must disclose any unspent criminal convictions. Some programmes will require the disclosure of all convictions, spent or unspent.

The University will consider whether such convictions are compatible with membership and a place on a particular programme. If your situation changes after the offer of a place please notify the Admissions Tutor for your programme, or if you have already enrolled, the Programme Director.

Disabilities

If you have study support needs related to a disability, including dyslexia and other specific learning difficulties, mental health conditions, or other health conditions, the University will seek to support you whenever possible.

If you have not yet disclosed that disability, we would encourage you to do so at the earliest opportunity to assist us in putting in place the appropriate support in good time. We would normally document the support to be provided in an agreed statement. Even if you have already disclosed a disability, please make sure you contact the Disability and Learning Support Service before you accept any offer of a place, in order to establish what support is available and the information we need to ensure this can be arranged. You should be aware that if you choose not to disclose your disability, or to limit that disclosure, while we will do our best to help you, you may not be able to access the full range of support available. The Disability and Learning Support Team can be contacted by telephone on +44 (0)121 414 5130 or by email at disability@bham.ac.uk. Further information is also available at www.birmingham.ac.uk/students/disability

Programme entry requirements

The programme requirements for admission are set out in the relevant section of the prospectus. Please consider these carefully to ensure you are eligible for your chosen subject.

Health requirements

The University and bodies such as the General Medical Council and the Department for Education require applicants for certain programmes to provide information regarding their physical health. Applicants may also be required to undergo a health check and to provide evidence of immunisation against certain diseases. The offer of a place is conditional on such requirements being met.

Blood-borne viruses

The regulations on the screening and admissions to medical schools of students with blood-borne viruses, and other regulations, are subject to change from time to time and you are advised to consult the relevant college website for up-to-date information.

Fees and payment

It is your responsibility to make sure your tuition fees and all other expenses relating to your programme are paid in a timely manner. The tuition fee will be stated in your offer letter. The fee quoted is revised each academic year. When you register online, you will be required to indicate how your fees will be paid. If you are paying the fee yourself, the University will require either full payment or an application to make payment using the University direct debit scheme.

As a member of the University you will be bound by the University's regulations on the payment of fees. Failure to make payment in accordance with the regulations will ultimately result in exclusion from the University. The regulations are set out on the University's website at www.birmingham.ac.uk/students/payments If you are a sponsored student and your sponsor fails to pay your tuition fees, you will become responsible for payment. Your offer letter will

indicate whether you will be considered as home/EU or overseas for fees purposes. If you feel this classification to be incorrect it is your responsibility to contact the Admissions Office.

Unless stated otherwise, the programme and course fees do not include any charges for residential accommodation, examination resits, extensions to the designated period of study, travelling expenses, or other miscellaneous expenses which may be related to your programme of study.

If you would like the University to be able to discuss your fee account with a third party, we will require you to complete a 'Disclosure to a Third Party' form in accordance with the Data Protection Act 1998. This form can be found at www.birmingham.ac.uk/students/payments

Scholarships

Information on sources of funding can be found at www.birmingham.ac.uk/international/students/finance/scholarships/index.aspx

Registration and University membership: information and requirements

General guidance and regulations

All members of the University (which includes Registered Students) are required to comply with the following:

- Health and safety guidance
- Code of practice on use of computing facilities
- Race equality policy
- Discrimination and harassment guidance
- Data protection policy
- Public interest disclosure policy
- Rules on car parking on University premises

Further details of these requirements can be found at www.as.bham.ac.uk/legislation/codesofpractice.shtml

Data protection and disclosure of personal information

The application procedure, registration and your academic progress will provide the University with a range of information about you. It will use this to support you on your programme and for the administration and management of the University, including statistical analysis. Some information may be disclosed outside the University, either at your request or in your interest. The information is collected from a number of sources including your application, registration forms and references and from carrying out Criminal Records Bureau (CRB) or health checks (if necessary). We may disclose information relating to your academic progress to your sponsor (if you have one). Medical information disclosed to the University's Medical Officer or the Student Support and Counselling Service will be treated as confidential and disclosed only in accordance with their normal procedures. Information arising from Criminal Records Bureau checks will be used only in accordance with the CRB's code of practice (see www.crb.homeoffice.gov.uk).

We will also ask for emergency contact details and by providing them, you confirm that these individuals have consented to the processing of their personal data by the University. All information will be kept for a reasonable period in accordance with legal requirements and for administration purposes.

Further information can be found at www.birmingham.ac.uk/university/data-protection

Programmes, courses and modules

The University will make all reasonable efforts to deliver your programme as described in the University's offer letter. However, the University may have to vary the method of delivery of your programme, and in some cases the syllabus may be altered or updated, or your supervisor changed. When an agreed supervisor becomes

unavailable, for example, through leaving the University's employment, the University will endeavour to find a suitable replacement or make alternative arrangements. In extreme circumstances the University may have to discontinue your programme or amalgamate modules. In the unlikely event that the University discontinues your programme or changes it significantly we will tell you at the earliest possible opportunity. Under such circumstances you may wish to withdraw your application; if you do so, the University will assist you in finding an alternative programme either at Birmingham or at another UK university.

Deposits

We reserve the right to charge a deposit for some programmes. Full details will be included in our offer letter where appropriate.

Conduct

Students are required to attend such lectures, tutorials, examinations and other activities as form part of their programme. This includes the requirement to submit theses, dissertations and coursework on time. Students must also be aware of and observe the University's discipline regulations and codes of conduct (which include the University's right to suspend or exclude a student in exceptional circumstances on disciplinary grounds), which can be seen at www.as.bham.ac.uk/sca/ You may also be subject to the University's regulations on Fitness to Practise, and, if so, additional information will be included with the offer letter.

Diversity and equality

The University prides itself on being a diverse community within a diverse city. Our commitment to equality and diversity and the elimination of discrimination is embodied in the University's Charter and our aim is to ensure that the University remains an inclusive environment where equality of opportunity and tolerance for all are fostered and promoted.

Termination

Subject to the completion of any internal appeals procedures, you may be asked to leave the University if:

- Your academic performance is not satisfactory
- Action is taken against you in accordance with the University's disciplinary or Fitness to Practise procedures
- You fail to pay your fees in accordance with the University's regulations on payment of fees
- You are expelled or dismissed from any other organisation which you are required to attend or be a member of as part of your programme
- In the reasonable opinion of the University, you have failed to provide the University with all relevant information, or have supplied false or misleading information, relating to your application for your programme
- As a result of your actions the University is unable to find a suitable placement which is required to complete your programme

Depending on the circumstances the University may also be entitled to take legal action against you (for example to recover an outstanding debt). Provided the action taken to terminate the agreement is in accordance with the University's procedures, the University will not be liable for any loss or damage which you may suffer as a result. Neither the student nor the University shall be liable to each other for any failure or delay in performing obligations, if the failure or delay is due to any cause beyond that party's reasonable control, for example fire, flood or industrial dispute.

Intellectual property

You are subject to the University regulations regarding exploitable new inventions and intellectual property arising whilst you are a student of the University. The regulations are available through the University's website www.birmingham.ac.uk

Generally the procedure is the same for both students and members of staff. The University claims ownership of the intellectual property, and if it is exploited, it passes a substantial

benefit from the net profits back to the student or staff member. However, if you have any questions or concerns regarding these provisions please discuss them with your supervisor or Head of School.

Accommodation

If you apply to the University to reside in University accommodation this is dependent on you continuing to study at the University. There are separate terms and conditions which apply to your occupation of University accommodation and further details of these are available from Housing Services at www.birmingham.ac.uk/accommodation

Religious observance

Whilst the University promotes an egalitarian learning community, applicants and students should be aware that:

- In an intensive course we have to routinely schedule activities, including examinations, on Fridays and Saturdays. Where this may conflict with the observance of religious days for some students, the University will endeavour to make alternative arrangements where reasonably possible. Therefore students are advised to inform the relevant school and/or the Examinations Office in writing of such issues as soon as possible.
- The General Medical Council and the British Dental Association stipulate that the wearing of gloves and/or burkas is not permitted in the clinical setting. Medical students are required to sign a code of practice in which they agree to show their faces at all times, and must be prepared to examine and touch patients of both sexes. See www.birmingham.ac.uk/students/support

General matters

The agreement is between the University and the student and only these two parties can enforce the agreement between them. The Contracts (Rights of Third Parties) Act 1999 shall not apply. The agreement between the student and the University is governed by English law. Further information can be found on our website www.birmingham.ac.uk

If you have any questions please contact the Undergraduate Admissions Tutor for your school.

Further information

This prospectus was published in July 2012 and refers to entry from September 2013 to July 2014. The University of Birmingham reserves the right, without notice, to withdraw programmes or raise fees at any time before or after an applicant's admission. If you have any complaints regarding the accuracy or fairness of this prospectus, they should be addressed to the Director of Communications and Marketing, who will investigate the matter and reply, in writing, within 21 days of receiving the letter.



Designed and produced by External Relations, University of Birmingham
Print: Belmont Press Ltd.
© University of Birmingham, July 2012

Thank you to all the students, staff, alumni and friends of the University who have contributed to this publication.

This prospectus is printed on paper manufactured from 100% recycled fibres (post-consumer waste). The selected waste is cleaned but is not re-bleached. The mill has an environmental management system in place and paper is produced in accordance with European environmental legislation.

How to find out more

THERE IS SO MUCH HAPPENING AT BIRMINGHAM THAT WE WOULD LIKE TO TELL YOU ABOUT. HERE ARE A FEW WAYS THAT YOU CAN GET IN TOUCH WITH US TO FIND OUT MORE.

Come and see for yourself

We understand that as international students it is difficult to attend open days, or even to come to our campus. If however, you find that you are in the UK at any time and want to visit the campus please email us at international@bham.ac.uk and we will be more than happy to show you around.

Stay in touch online

Twitter: @UoBirmingham
 Facebook:
www.facebook.com/unibirmingham
 YouTube:
www.youtube.com/unibirmingham



General enquiries

For all enquiries please visit
www.birmingham.ac.uk/international

Meet us in your country

Our officers regularly travel overseas. Visit www.birmingham.ac.uk/international/meet to find out when we are near you next.

If you would like to speak to someone directly please use one of the following:

Call us:

International student enquiries:
 +44 (0)121 414 2894
 Fax: +44 (0)121 414 3850

Study Abroad enquiries:

+44 (0)121 414 7696
 Fax: +44 (0)121 414 3850

Email us: international@bham.ac.uk

Write to us:

International Relations
 Aston Webb, C Block, University of Birmingham
 Edgbaston, Birmingham B15 2TT

Our overseas offices and contacts

India:

University of Birmingham India Office
 1007 Merchantile House
 15 Kasturba Gandhi Marg
 New Delhi 110001
 India
 Tel: +91 11 2370 6237/38
 Fax: +91 11 2370 6243

China:

**University of Birmingham
 Guangzhou Centre**
 Yinglong Plaza,
 Room 714, No.76, Fuli Yinglong,
 Huangpu Avenue West,
 Tianhe District,
 Guangzhou,
 China
 510623
 Tel: +86 20 3888 0707

Beijing:

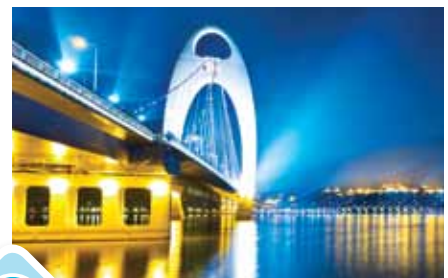
Yuyan Kong
 Tel: +86 10 8525 1111 Ext. 328
 Email: y.kong.1@bham.ac.uk

Shanghai:

Mingya Zong
 Tel: +86 21 6218 5183
 Email: m.zong@bham.ac.uk

Brazil:

Patricia Borsa
 Tel: +55 47 3026 3562
 Email: p.borsa@bham.ac.uk



Useful websites for international students

www.birmingham.ac.uk/international

British Council
www.britishcouncil.org

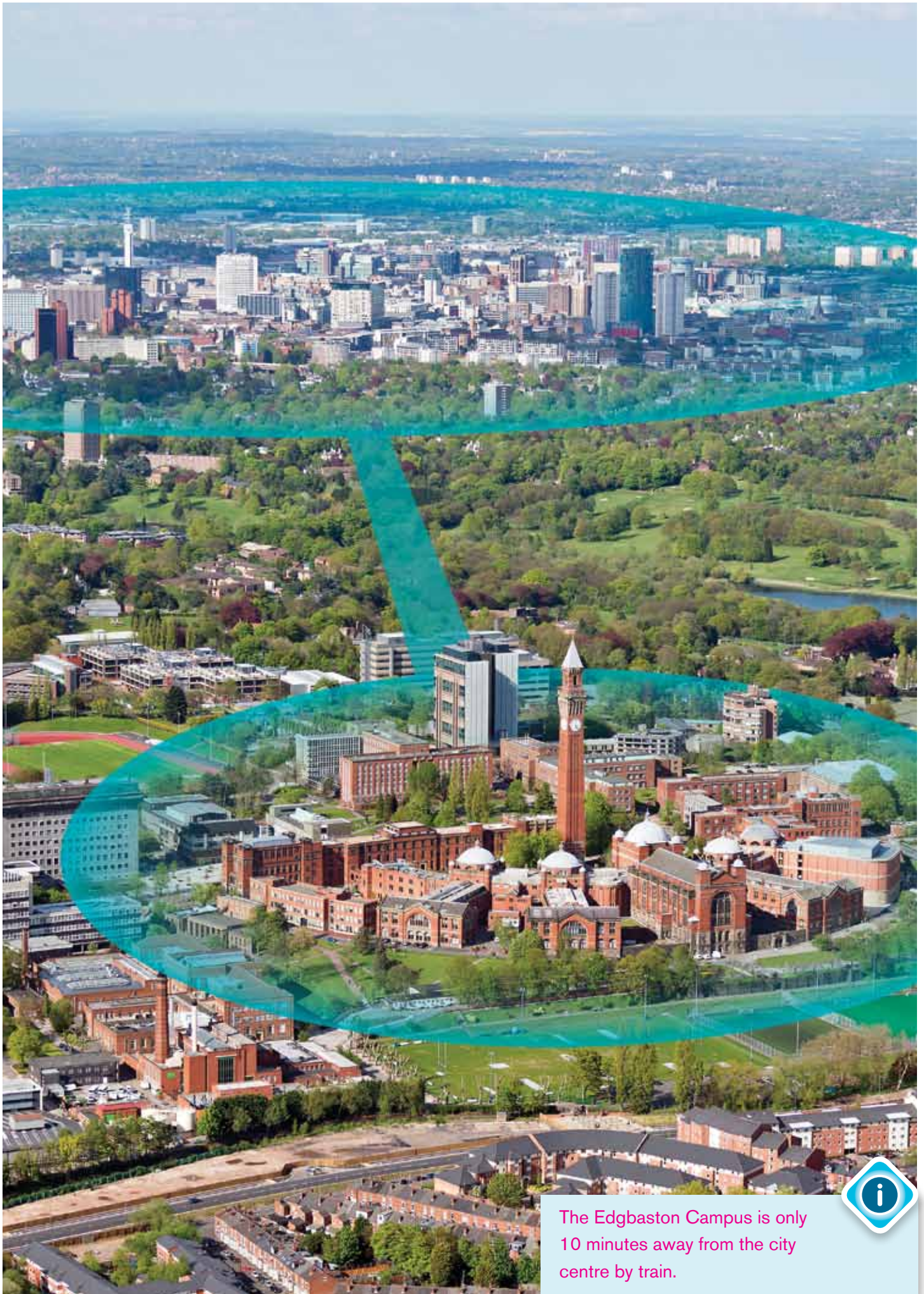
UK Council for International Student Affairs
www.ukcisa.org.uk

UK Border Agency
www.bia.homeoffice.gov.uk

Overseas representatives

The University has a network of overseas representatives who can provide information on studying at the University, as well as guidance on your application.

For more information visit your country page at www.birmingham.ac.uk/international/students/country



The Edgbaston Campus is only 10 minutes away from the city centre by train.



The Edgbaston campus

Index to buildings by zone

Red Zone

- R1 Law Building
- R2 Frankland Building
- R3 Hills Building
- R4 Aston Webb – A Block, Earth Sciences
- R5 Aston Webb – B Block
- R6 Aston Webb – Great Hall
- R7 Aston Webb – C Block
- R8 Physics West
- R9 Nuffield
- R10 Physics East
- R11 Medical Physics
- R12 Bramall Music Building
- R13 Poynting Building
- R14 Barber Institute of Fine Arts
- R15 Watson Building
- R16 Arts Building
- R17 Ashley Building
- R18 Strathcona Building
- R19 Education Building
- R20 J G Smith Building
- R21 Muirhead Tower
- R22 Main Library
- R23 University Centre
- R24 Staff House
- R25 Munrow Sports Centre
- R26 Geography
- R27 Biosciences Building
- R28 Learning Centre and Primary Care

Blue Zone

- B1 Medical School
- B2 Institute of Biomedical Research including IBR West
- B3 Wellcome Clinical Research Facility (1st floor)
- B4 Robert Aitken Institute for Clinical Research
- B5 CRUK Institute for Cancer Studies and Denis Howell Building
- B6 Research Park
- B7 90 Vincent Drive
- B8 Henry Wellcome Building for Biomolecular NMR Spectroscopy
- B9 Medical Practice and Dental Centre

Orange Zone

- O1 The Guild of Students
- O2 St Francis Hall
- O3 University House
- O4 Elm House

Green Zone

- G1 32 Pritchatts Road
- G2 31 Pritchatts Road
- G3 European Research Institute
- G4 3 Elms Road
- G5 Computer Centre
- G6 Metallurgy and Materials
- G7 IRC Net Shape Laboratory
- G8 Gisbert Kapp Building
- G9 52 Pritchatts Road
- G10 54 Pritchatts Road
- G11 Nicholson Building
- G12 Winterbourne House and Garden
- G15 Westmere
- G18 Priorsfield
- G19 Park House
- G20 Elms Plant
- G21 Park Grange
- G22 Elms Day Nursery

Green Zone Conference Park

- G13 Hornton Grange
- G14 Garth House
- G16 Lucas House
- G17 Peter Scott House

Yellow Zone

- Y1 Old Gymnasium
- Y2 Haworth Building
- Y3 Mechanical and Civil Engineering Building
- Y4 Terrace Huts
- Y5 Estates West
- Y6 Maintenance Building
- Y7 Grounds and Gardens
- Y8 Chemistry West
- Y9 Computer Science
- Y10 Alta Bioscience
- Y11 Chemical Engineering
- Y12 Biochemical Engineering
- Y13 Chemical Engineering Workshop
- Y14 Sport and Exercise Sciences
- Y15 Civil Engineering Laboratories
- Y16 Occupational Health
- Y17 Public Health



The Selly Oak campus

The Selly Oak campus is 15 minutes from Birmingham city centre and only five minutes away by car from the Edgbaston campus, on an 80-acre garden site near the village of Bournville.

UNIVERSITY OF
BIRMINGHAM

Edgbaston, Birmingham,
B15 2TT, United Kingdom

www.birmingham.ac.uk



recycle

When you have finished with
this prospectus please recycle it

100% recycled

This prospectus is printed
on 100% recycled paper