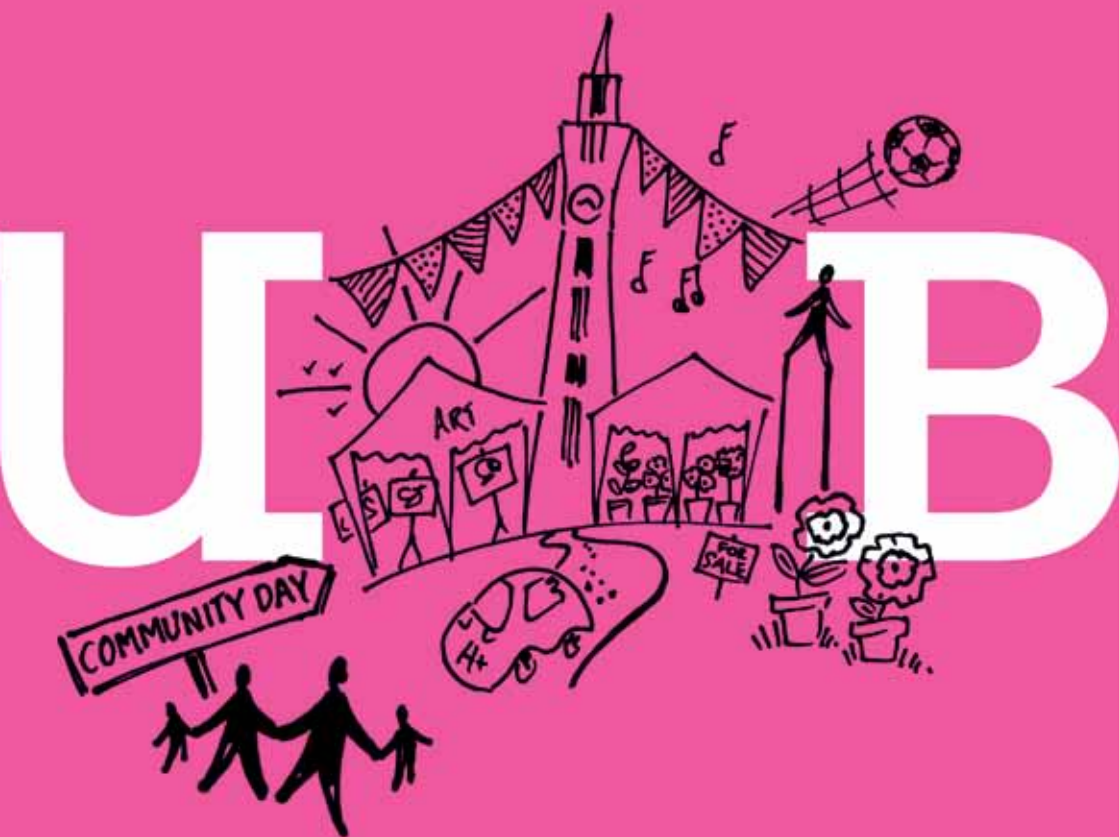


UNIVERSITY OF  
BIRMINGHAM



**Community Day programme**

Sunday 10 June 2012

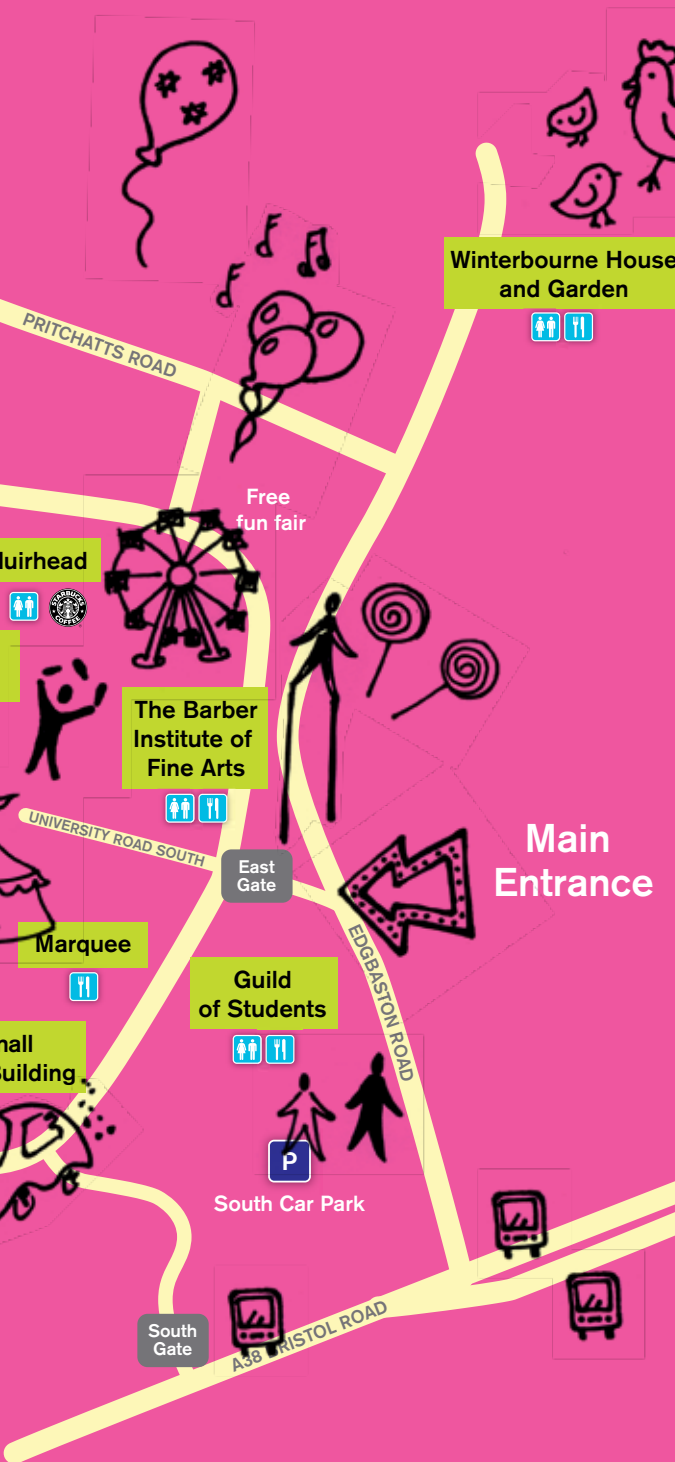
11.00am–4.00pm

# Come and explore your local university

Sunday 10 June – 11.00am–4.00pm



All buildings have disabled access. For disabled parking please report to East Gate on Edgbaston Park Road.  
Subject to change.



## What's on, where?

### Chancellor's Court

P6

Hydrogen cars, mini gym, health research bus and racing car

### Marquee

Wind and brass bands

### Bramall Music Building

P7

Photography exhibition, building tour and University Big Band

### University Square

Fun fair, refreshments, games, stalls and market

### Muirhead

P8

Tours, arts and exhibitions

### Library

Displays, children's books and competitions

### Barber Institute of Fine Arts

P9

Tours, arts and crafts

### Guild of Students

Drama, dance and performances, games, arts and crafts

### Winterbourne House and Garden

P10

Gardens, shop and café

### Aston Webb lecture theatres

P11

Interactive lectures and debates

### Great Hall

P12

Explore medicine, Shakespeare, exhibitions, science, games and activities



# In detail

## Aston Webb Reception

What's on?
<ul style="list-style-type: none"><li>Information point</li><li>Lost children point – arrange to meet here</li><li>St John Ambulance</li><li>Find out more about becoming a student at Birmingham</li><li>Sign up for our range of tours (see below)</li><li>So you think you can teach? – teaching opportunities at Birmingham</li><li>Register for our Mini Medical School and learn about medicine</li><li>Register for the Community Day Family Quiz</li><li>Make yourself an Olympic badge</li><li>Have a go at our biology bones trail</li><li>Find out more about the venues we have on offer for weddings and parties</li></ul>

## Tours around campus

What's on?	What age?	What time?
<b>Blue Plaque Trail</b> Self-led tour celebrating some of Birmingham's greatest achievements	All ages	All day
<b>Family tours of the Barber Institute</b> Edward Elgar will feature in this fun, family-friendly, interactive tour	All ages	All day
<b>Munrow Sports Centre tour</b> Self-led tour of our Sports Centre	All ages	All day
<b>Culture campus tours</b> Tour our cultural collections	All ages	All day
<b>Muirhead tours</b> Make your way to Muirhead for this panoramic tour	All ages	11.00am, 1.00pm and 3.00pm
<b>Look Up!</b> Keep your eyes peeled for our theatrical pop-up group	All ages	All day





## Refreshments

What's on?	Where?	What time?
<b>Food and drink in the Square</b> You can bring your own food but if you want to buy something we have everything you need, including a barbecue!	University Square	12noon–4.00pm
<b>Farmers' market</b> Enjoy fresh, local produce and hot food	University Square	All day
<b>Refreshment stand</b> Fully stocked café, ice cream and popcorn	Chancellor's Court Marquee	All day
<b>Bratby Bar</b> Fully stocked bar and light snacks	Bratby Bar, Staff House	All day
<b>Café Aroma</b> Snacks, sandwiches, cakes and drinks	Café Aroma, 1st floor, Staff House	All day
<b>Starbucks</b> Coffee and cake at the famous café	Muirhead	All day
<b>Noble Room Carvery</b> Hot carvery lunch	2nd floor, Staff House	12noon–3.00pm
<b>Winterbourne tea rooms</b> Free entry for hot and cold snacks and drinks	Winterbourne House	All day
<b>Horton Grange</b> Hot carvery lunch	Horton Grange	12noon–3.00pm
<b>Bramall Foyer</b> Light refreshments	Bramall Music Building	All day
<b>Baby-feeding area</b>	Café Aroma, 1st floor, Staff House	All day



## Chancellor's Court

What's on?	What age?	What time?
<b>Kids' Mini Gym</b> Mini gym equipment for young children	<b>1 to 5 years</b>	<b>All day</b>
<b>Racing Car</b> See what it feels like to be a racing driver by sitting in our very own racing car	<b>10 to 18 years</b>	<b>All day</b>
<b>Hydrogen Cars</b> Take a ride in our fleet of hydrogen fuel cell vehicles	<b>All ages</b>	<b>All day</b>
<b>Health Research Bus</b> Get a sneak peak of our bus that brings research to you	<b>All ages</b>	<b>All day</b>

## Chancellor's Court Marquee

What's on?	What age?	What time?
<b>Summer Festival Wind and Brass Bands</b> Relax in our marquee and enjoy the sumptuous sounds of two of our University bands	<b>All ages</b>	<b>All day</b>
<b>A taste of 'Brum Dine With Me'</b> Enjoy fun, food-related activities	<b>All ages</b>	<b>All day</b>

## Running Track

What's on?	What age?	What time?
<b>University of Birmingham Mascot Race</b> Join Professor Fluffy, Savvy Squirrel, Chill the Chill-out Bear and more for this highly competitive race!	<b>All ages</b>	<b>Listen out for an announcement on the day</b>

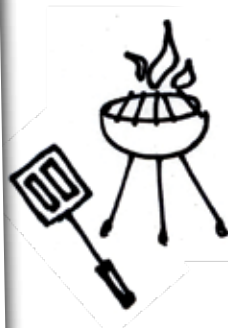


## Bramall Music Building

What's on?	What age?	What time?
<b>Snapped Photography Competition</b> Vote for your favourite entry to our student and staff photography competition	All ages	All day
<b>Tours of the Bramall Music Building</b> Have a tour of our brand new building	All ages	All day
<b>University Big Band</b> As part of the Summer Music Festival the University Big Band will be playing throughout the day	All ages	All day
<b>Our vision for the future</b> Find out what Birmingham is planning for its historic campus	All ages	All day

## University Square

What's on?	What age?	What time?
<b>Fun Fair</b> A climbing wall, helter skelter and lots more	All ages	All day
<b>Give Golf a Go</b> Give golfing a go and improve your game	4+	All day
<b>Bromford Dreams Cube</b> Visit the dream cube and have a go at street art	All ages	All day
<b>Ironbridge Pentathlon</b> Have a go at juggling, hula hooping and more	All ages	All day
<b>Farmers' and Craft Market</b> Enjoy local, fresh produce, arts and crafts	All ages	All day



## Library and Library Gazebo (University Square)

What's on?	What age?	What time?
<b>Story Activity Packs</b> Enjoy quizzes, character sheets, build a story and design a hero	<b>Children</b>	<b>All day</b>
<b>Book giveaway</b> Book giveaway – a new batch of books will be produced every hour on the hour	<b>All ages</b>	<b>All day</b>
<b>New Library display</b> Take a look at the plans for our new library	<b>All ages</b>	<b>All day</b>
<b>University of Birmingham favourite children's books</b> Display of favourite books chosen by University staff and students	<b>All ages</b>	<b>All day</b>
<b>Giant poetry creation</b> Use the words provided to create your own poem	<b>All ages</b>	<b>All day</b>

## Arts Building

What's on?	What age?	What time?
<b>Robot demos</b> Meet our resident robots Dora and Nao	<b>All ages</b>	<b>All day</b>
<b>Danford Collection of West African Art and Artefacts</b>	<b>All ages</b>	<b>All day</b>

## Muirhead

What's on?	What age?	What time?
<b>Muirhead tours</b> Tours of the tower including panoramic views of campus and beyond	<b>All ages</b>	<b>11.00am, 1.00pm and 3.00pm</b>
<b>Survivor Arts Project</b> An exhibition of work by survivor artists and poets. There will also be performances throughout the day	<b>All ages</b>	<b>All day</b>





## Barber Institute of Fine Arts

What's on?	What age?	What time?
<b>Making Money</b> 'Make your own money' arts activity	All ages	All day
<b>Speed Sketching</b> Draw a portrait in two minutes or less! An artist will be on hand to help you draw a portrait in the same time that a man runs the 100 metres	All ages	All day
<b>Meet a real-life portrait painter</b> Meet and ask questions of artist Graham Kershaw	All ages	All day

## Guild of Students

What's on?	What age?	What time?
<b>Arts and Crafts</b> Make you own Olympic flag, torch, medal and olive leaf crown	All ages	All day
<b>Bouncy Castle</b>	5 to 12 years	All day
<b>Face Painting</b>	3 to 12 years	All day
<b>Guild Archive Display</b> Visit this collection and learn about the rich history of the Guild of Students	5 to 12 years	All day
<b>Student performances</b> Come and see our talented students in a range of drama and dance performances including a battle re-enactment	All ages	All day
<b>Interactive Workshops</b> Visit the Guild and take part in a range of workshops	All ages	All day





## Media Centre

What's on?	What age?	What time?
<b>Studio Operations</b> Learning about how our working media studio operates and have a go with one of our cameras	All ages	All day

## Winterbourne House and Garden

What's on?	What age?	What time?
<b>Community stalls and garden tours</b> Pay £1 to enter the wonderful Winterbourne garden	All ages	All day

## Lapworth Museum of Geology

What's on?	What age?	What time?
<b>Lapworth Quizzes</b> Test your knowledge with our competitions, quizzes and puzzles	All ages	All day
<b>Recreate a Jurassic Landscape</b> Recreate a Jurassic landscape using modelling clay and murals	All ages	All day
<b>Recreating a volcanic eruption</b> See a live volcanic eruption	All ages	All day
<b>Dinosaur Dig</b> Find dino fossils and identify who they came from	All ages	All day
<b>Virtual palaeontology</b> View and manipulate computer reconstructions of fossils	All ages	All day
<b>Under the microscope</b> Explore ancient microscopic worlds	All ages	All day
<b>Timmy the time travelling T-Rex</b> Come and see Timmy in our puppet show	All ages	12noon, 1.00pm, 2.00pm and 3.00pm

## Senate Chamber Seminar Room

What's on?	What age?	What time?
<b>Community Day Big Science Quiz</b> Pre-registration is required for this event – sign up at our stall in Aston Webb Reception	Families	All day

## Aston Webb Rotunda

What's on?	What age?	What time?
<b>Jim Bryne exhibition</b> Learn about the processes an artist goes through when creating a new series of paintings	<b>All ages</b>	<b>All day</b>

## Aston Webb Lecture Theatre – WG05

What's on?	What age?	What time?
<b>Woolly Mammoth: Behind the scenes</b> Alice Roberts talks about the science of mammoths, and the trials and tribulations of filming a programme about these long-lost giants of the Ice Age.	<b>All ages</b>	<b>12noon–12.45pm</b>
<b>Mini Medical School – session 1</b> A popular taster session for young people interested in medicine	<b>All ages</b>	<b>1.00pm–1.45pm</b>
<b>Mini Medical School – session 2</b> A popular taster session for young people interested in medicine	<b>All ages</b>	<b>2.00pm–2.45pm</b>
<b>Stem Cell Debate</b> What are stem cells, what can they do? Why should we use them and how will they change lives? Join this lively debate to find out more.	<b>13+</b>	<b>3.00pm–3.45pm</b>

## Aston Webb Lecture Theatre – WG12

What's on?	What age?	What time?
<b>What can go wrong with your joints and what puts them at risk? – session 1</b> Come along and learn all about your joints	<b>12+</b>	<b>1.00pm–1.45pm</b>
<b>What can go wrong with your joints and what puts them at risk? – session 2</b> Come along and learn all about your joints	<b>12+</b>	<b>2.00pm–2.45pm</b>
<b>Hands-on anatomy – the results!</b> Join Alice Roberts for the results of her anatomy body painting! (see page 13, number 22)	<b>All ages</b>	<b>3.30pm–4.00pm</b>



## Aston Webb Building – Great Hall

	What's on?	What age?	What time?
1	<b>Build the Olympic Stadium</b> Build the Olympic Stadium using paper rolls	10+	All day
2	<b>Hot Cities</b> Learn about urban climate research and use our thermal camera, IR thermometer and temperature sensors	All ages	All day
3	<b>Could you be a Social Worker?</b>	16+	All day
4	<b>Editing Jonathan Swift</b> Compare samples of handwriting and interpret contemporary printings	16+	All day
5	<b>Would Medieval Midlanders have understood your English?</b> Find out using the Vernon Manuscript	All ages	All day
6	<b>Quoting Shakespeare</b> Have fun learning about Shakespearian language	All ages	All day
7	<b>EA Worldview (Enduring America)</b> Move over CNN, BBC, Al Jazeera... there's a new kid on the media block!	11+	All day
8	<b>Making child's play science</b> Learn about the studies going on in the Infant and Child Lab with puppet games and an eye-tracking demonstration	All ages	All day
9	<b>Finding our way in a virtual world</b> Navigate the virtual streets of Birmingham and help people with memory problems after brain injury	6+	All day
10	<b>Dancing the scientific way</b> Calculate your energy expenditure with the help of our dance mats	All ages	All day

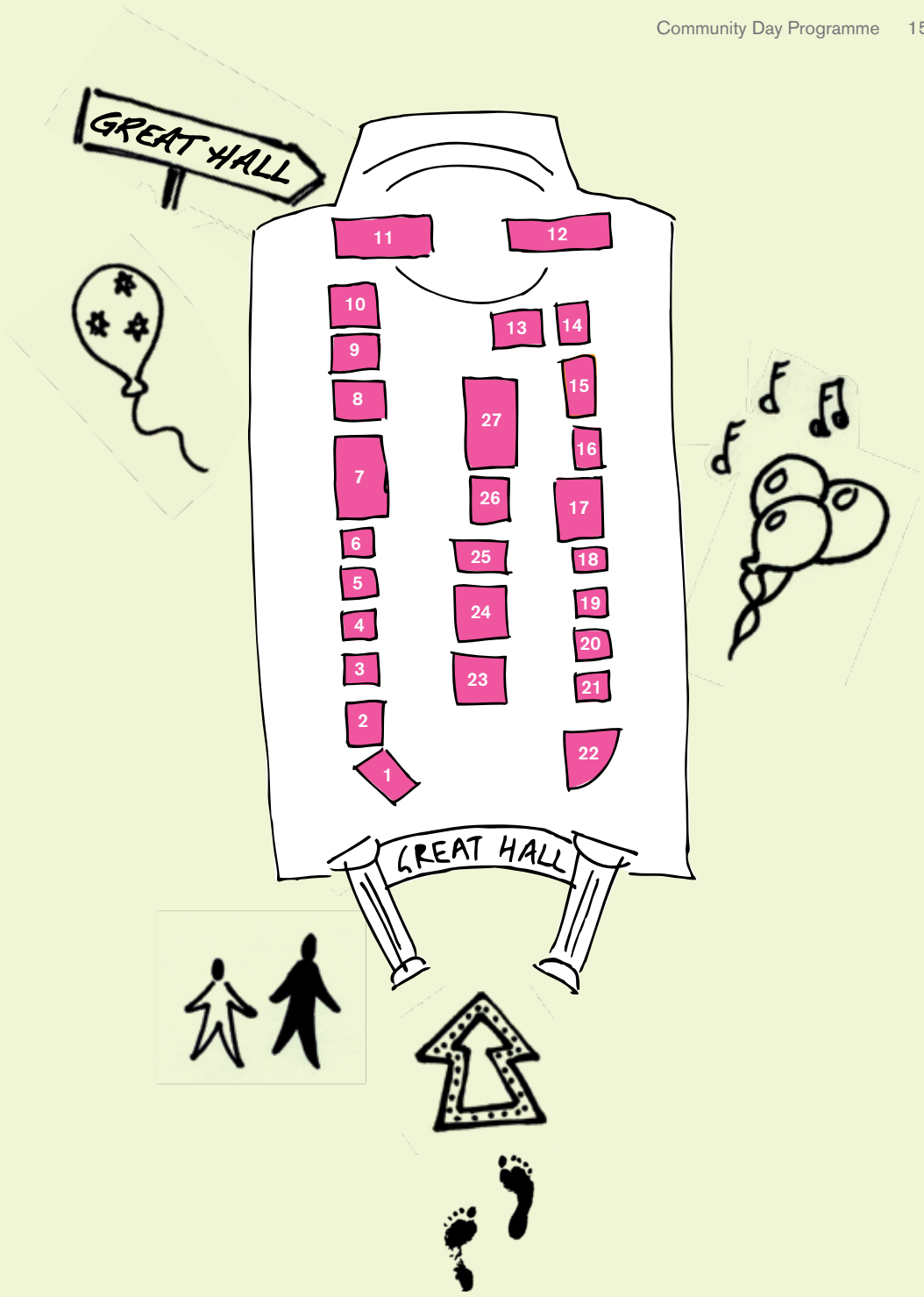




	What's on?	What age?	What time?
11	<b>Try something new in physical exercise</b> Have a go at skipping, skittles and balance training amongst others	All ages	All day
12	<b>Active Lifestyle demonstrations</b> Build an active lifestyle with these classes available at Birmingham	All ages	All day
13	<b>UBSport</b> Win free membership to the Munrow Sports Centre and find out about membership and activities on offer	All ages	All day
14	<b>Healthy Lifestyles</b> Learn how to make your lifestyle healthier	All ages	All day
15	<b>Finding the 'Gold standard'</b> Find out more about clinical trials by guessing which lemonade is sweeter	All ages	All day
16	<b>DNA repair race</b> Discover the role of DNA in cells using coloured balls and a length of guttering	All ages	All day
17	<b>Look after your liver and it will look after you</b> Experience the many functions of the liver	6+	All day
18	<b>Film-making</b> Visit this visual display of student film-making work	All ages	All day
19	<b>Find out more about the Lapworth Museum of Geology</b>	All ages	All day
20	<b>Food and life at the University – Edwardian era</b> Visit this display of Edwardian era archives and decorate the tree with your memories of Community Day 2012	All ages	All day
21	<b>Cultural Collections and Style Africa</b> West African art inspired activities including colouring, vegetable carving, and a showcase of objects from our extensive collections here at Birmingham	All ages	All day
22	<b>Hands-on anatomy</b> Help Alice Roberts paint the anatomy of a human by trying your hand at anatomy body painting on a real person! The results will be unveiled at 3.30pm in lecture theatre WG12 – see page 11	6+	11.00am– 3.15pm
23	<b>Sea snapping</b> Use our microscope and take colourful photos of algae with different iron contents	5+	All day

	What's on?	What age?	What time?
24	<b>Gory Make-up</b> Relax for a while and walk away with the bubonic plague using special effects make-up from our resident expert!	7+	All day
25	<b>Blockbuster Drugs</b> Play Drug Blockbusters and learn about treatments of various ailments	6+	All day
26	<b>Guess the bone</b> Challenge your knowledge by guessing the bone on our skeleton	All ages	All day
27	<b>How good are your lungs?</b> Try our equipment to test your breathing	All ages	All day





# Thank you for coming!

Tell us what you thought and win a prize  
at [community@contacts.bham.ac.uk](mailto:community@contacts.bham.ac.uk)



UNIVERSITY OF  
BIRMINGHAM

Edgbaston, Birmingham,  
B15 2TT, United Kingdom

[www.birmingham.ac.uk](http://www.birmingham.ac.uk)