

— 224 FREE —
**MASTERS
PLACES**
FOR 2015 ENTRY

POSTGRADUATE OPEN DAY



Wednesday 18 March 2015

Aston Webb Building, Edgbaston campus,
Birmingham, B15 2TT

www.birmingham.ac.uk/pgopendays

Supported by

 FindAMasters.com

 FindAPhD.com

Contents and information

| | |
|---------------------------------|----|
| Welcome | 3 |
| Postgraduate Study Fair | 4 |
| Floorplan | 5 |
| General events timetable | 6 |
| Subject events timetable | 8 |
| Refreshments | 18 |
| Road map and travel information | 19 |
| Edgbaston campus map | 20 |

Information and enquiries

For information in advance of the Open Day please contact Student Recruitment on 0121 414 4715 or email: pgopenday@contacts.bham.ac.uk

On the day

- Visitors should register at Aston Webb Reception, situated in the Aston Webb Building (R6 on campus map) in front of the Great Hall (Tel: 0121 414 8130)
- Information booths, staffed by student guides, can be found at entrances and in the centre of the campus; programmes, campus maps and information about the day can be obtained here
- Student ambassadors in green shirts are available all day on campus to help visitors find their way around

Special requirements

Please contact Student Recruitment in advance if you have any special requirements. Visitors with disabilities should get in touch so we can provide a mobility map and make suitable parking arrangements for you. Tel: 0121 414 4715 or email: pgopenday@contacts.bham.ac.uk

Emergency

Tel: 0121 414 4444
First aid assistance can be found in the Great Hall, Aston Webb Building

Your visit to the University of Birmingham

Our Postgraduate Open Day gives you the opportunity to talk to experts and find out more about the wide portfolio of taught and research opportunities available to you at Birmingham.

Postgraduate Study Fair (see page 4)

The main focus of the Open Day will be the Postgraduate Study Fair located in the Great Hall, Aston Webb Building (R6). Academic staff, representatives from the University's support services and current postgraduate students will be available to answer your questions. The event will run from 2.00–4.00pm and visitors are welcome to drop in at any time.

General events (see page 6)

A series of talks on topics of general interest to those considering postgraduate study will run before the Study Fair opens. You can also take advantage of one-to-one careers advice sessions during the Study Fair in the Great Hall, Aston Webb Building (R6).

Tours (see page 6)

Campus tours will run throughout the day, allowing you to experience our tranquil, picturesque campus first hand. There will also be opportunities to take a tour of the Main Library and to learn more about the University's holdings.

Subject events (see page 8)

Many academic schools and departments will be offering presentations on the postgraduate study options within their academic area. Many of our schools and departments will also be open to enable you to drop in at times throughout the afternoon to look around and speak to admissions representatives and current students.

Refreshments (see page 18)

The Edgbaston campus has all the amenities of a small town, including numerous shops, bars and cafés at which you can purchase refreshments throughout the Open Day. Free tea and coffee will also be available in the Great Hall of the Aston Webb Building (R6) between 2.00 and 4.00pm.



INVESTOR IN PEOPLE

Welcome

Welcome to our Postgraduate Open Day. The University of Birmingham is one of the most popular universities in the UK for postgraduate study, with over 10,000 postgraduate students from 140 countries around the world.



Our open days are designed to provide you with all the information you need to make an informed choice. Today you will have the opportunity to attend talks about the many taught and research postgraduate opportunities available to you and to have your questions answered by our lecturers and current postgraduate students.

Postgraduate study provides you with an excellent opportunity to develop your knowledge in a specialist area of your choice, to enhance your employability and to stand out from the rest in the eyes of potential employers. When you are choosing a university for postgraduate study you will be looking for one that can offer an outstanding reputation for pioneering research, together with a broad range of courses to suit your particular interests. The University of Birmingham stands at the forefront of cutting-edge research, world expertise and excellence in teaching. The most recent UK Research Excellence Framework (REF) assessment in 2014 demonstrated that Birmingham's research has international impact and leads the world in a range of disciplines.

At Birmingham we work hard to provide postgraduates with a first-class academic experience. Whether you join us on one of our taught postgraduate programmes or embark on doctoral (PhD) research with us, we value you as part of our academic community and we are constantly striving to develop the services, facilities, and opportunities available to you so as to enable you to achieve your full potential.

My colleagues will be on hand throughout the day to answer your questions. Enjoy your visit to the University of Birmingham.

With best wishes,

Dr Alaric Rae
Director of Student Recruitment

Postgraduate Study Fair

2.00–4.00pm, Great Hall, Aston Webb Building (R6)

The Study Fair offers you a fantastic opportunity to talk to representatives from all of the University's colleges. Members of staff, and current postgraduates will be available to answer your questions and to offer you advice on all aspects of postgraduate study. The Study Fair also includes representatives from the University's service departments.



The following academic and service departments will be exhibiting at the Postgraduate Study Fair:

College of Arts and Law

- African Studies and Anthropology
- Art History, Film and Visual Studies
- Classics, Ancient History, Archaeology and the Ironbridge International Institute for Cultural Heritage
- Drama and Theatre Arts
- English Language
- English Literature
- Film and Creative Writing
- History
- Law
- Modern Languages
- Music
- Philosophy
- Theology and Religion

College of Engineering and Physical Sciences

- Chemical Engineering (including Food Safety)
- Chemistry
- Civil Engineering
- Computer Science

- Electronic, Electrical and Systems Engineering
- Mathematics
- Mechanical Engineering
- Metallurgy and Materials
- Physics and Astronomy

College of Life and Environmental Sciences

- Biosciences
- Geography, Earth and Environmental Sciences
- Psychology
- Sport, Exercise and Rehabilitation Sciences

College of Medical and Dental Sciences

- Cancer Sciences
- Clinical and Experimental Medicine
- Dentistry
- Health and Population Sciences
- Immunity and Infection

College of Social Sciences

- Business
- Economics
- Education

- Political Science, International Studies and Sociology (POLSIS)
- Institute for Conflict, Cooperation and Security
- Institute for Local Government Studies
- International Development (IDD)
- Social Policy
- Social Work

Support services

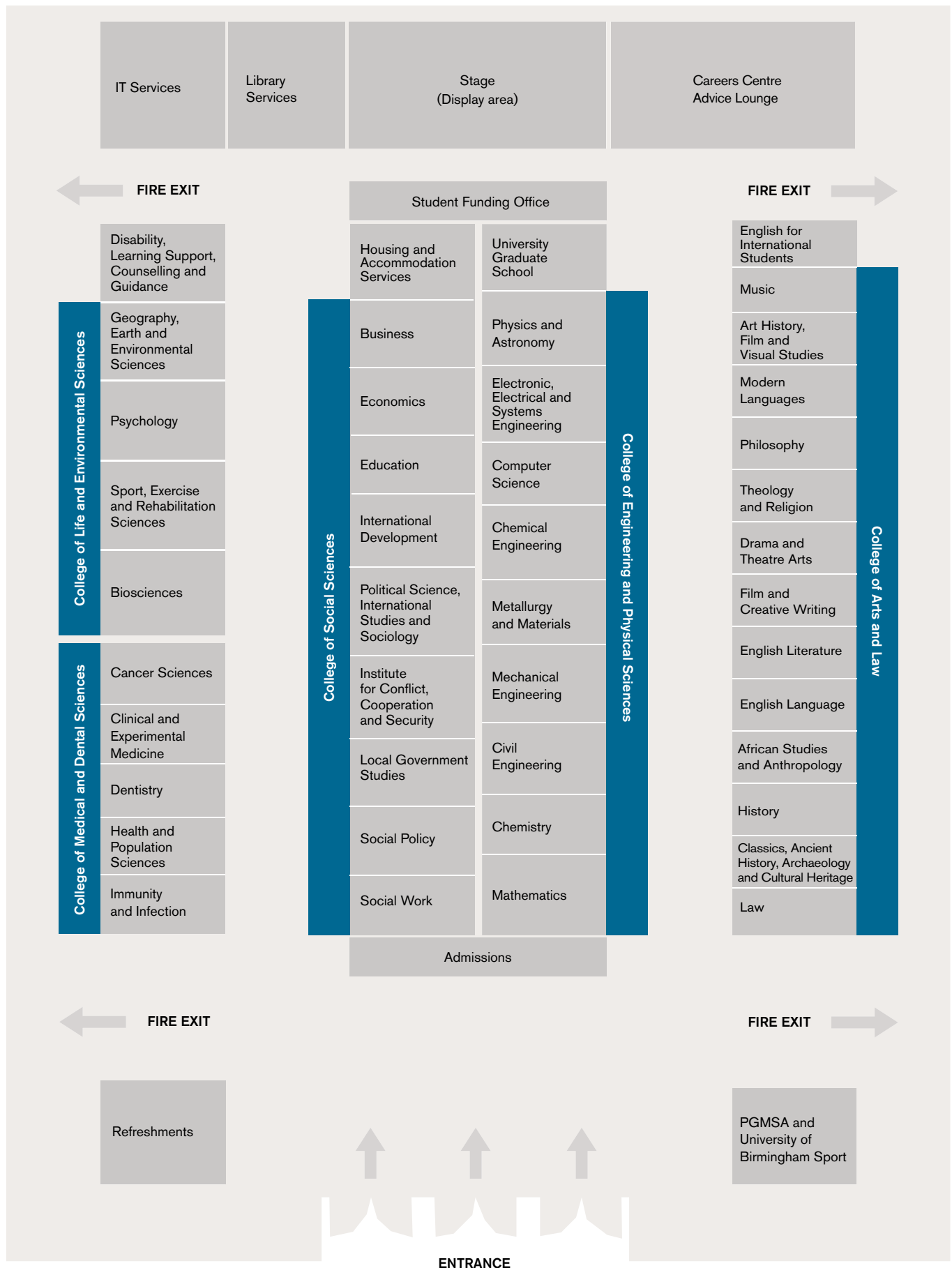
- Careers Centre
- Disability, Learning Support, Counselling and Guidance
- English for International Students
- Housing and Accommodation Services
- IT Services
- Library Services
- Postgraduate Admissions
- Postgraduate and Mature Students Association (PGMSA)
- Student Funding Office
- University Graduate School
- University of Birmingham Sport

Sponsors

FindAUniversity



Floorplan



General events timetable

The general events have been designed to give you the information you need to make an informed choice about postgraduate study at the University of Birmingham. If you need any help with directions, one of our postgraduate ambassadors – identifiable by their bright green tops – will be happy to guide you.

Central events timetable

| Time | Session | Speaker | Room |
|--------------|-------------------------------------|--------------------------|--------------------------------------|
| 12.30–4.00pm | Registration | Postgraduate ambassadors | Great Hall, Aston Webb Building (R6) |
| 2.00–4.00pm | Postgraduate Study Fair | School representatives | Great Hall, Aston Webb Building (R6) |
| 2.00–4.00pm | Careers Centre Advice Lounge | Various careers advisors | Great Hall, Aston Webb Building (R6) |

Central talks timetable

| Time | Talk | Speaker | Room |
|-------------|--|---|-------------------------------------|
| 1.00–1.15pm | Welcome and Introduction to Postgraduate Study | Professor Gavin Schaffer, Director of the University Graduate School | Room WG5, Aston Webb Building (R6) |
| 1.20–2.00pm | Funding Postgraduate Study at the University of Birmingham | Francesca Coxon, Funding, Graduation and Awards Manager | Room WG5, Aston Webb Building (R6) |
| 3.00–4.00pm | The Value of Postgraduate Study: The Employer Perspective | Representatives from The Careers Network | Room WG12, Aston Webb Building (R6) |
| 5.15–6.30pm | Café PhD | Representatives from the Postgraduate and Mature Students Association | Lecture Room 4, Arts Building (R16) |
| 5.15–6.30pm | Café Masters, including advice on applying to the Birmingham Masters Scholarship Scheme | Postgraduate Recruitment Advisors | Lecture Room 8, Arts Building (R16) |

Tours timetable

| Time | Tour | Departing from |
|------------------|-----------------------|---|
| 12.00noon–1.00pm | Edgbaston campus tour | Campus tours stand, Reception, Aston Webb Building (R6) |
| 1.30–2.30pm | Edgbaston campus tour | Campus tours stand, Reception, Aston Webb Building (R6) |
| 2.00–2.30pm | Main Library tour | The i-Lounge, Main Library (R22) |
| 2.30–3.30pm | Edgbaston campus tour | Campus tours stand, Reception, Aston Webb Building (R6) |
| 3.00–3.30pm | Main Library tour | The i-Lounge, Main Library (R22) |
| 3.30–4.30pm | Edgbaston campus tour | Campus tours stand, Reception, Aston Webb Building (R6) |



UNIVERSITY OF
BIRMINGHAM

— POSTGRADUATE —
**MENTOR
SCHEME**

POSTGRADUATE MENTOR SCHEME

If you have queries or concerns about any aspect of life as a doctoral researcher at Birmingham, you can get first-hand information and advice from current students and alumni via email as soon as you have received your offer of a place. Our postgraduate mentors will answer your questions based on their own experience of campus life, their University school or department, the city, the transition to doctoral study and the support services offered by the University. They can also help you with registration and administration procedures once you arrive.

**FOR MORE INFORMATION ON
THIS SERVICE, PLEASE VISIT:**
www.birmingham.ac.uk/pgmentors

Subject events timetable

College of Arts and Law

This College offers postgraduate students the opportunity to join a vibrant, international community that allows research to flourish. Home to world-renowned research centres and famed for its internationally recognised teaching and research output, Arts and Law at Birmingham is engaged in exciting initiatives in new fields of study. The College consists of the following schools: Birmingham Law School; English, Drama and American & Canadian Studies; History and Cultures; Languages, Cultures, Art History and Music; and Philosophy, Theology and Religion. We also have a College of Arts and Law Graduate School for all of our postgraduate students.

| Academic School | Time | Event | Location |
|--|--|--|---|
| University Graduate School | 5.15–6.30pm | Café PhD – an opportunity to meet current doctoral researchers; hear about their work and their experiences of PhD life, and to ask questions in a relaxed and informal setting. <i>Refreshments will be provided.</i> | Lecture Room 4, Arts Building (R16) |
| | 5.15–6.30pm | Café Masters – an opportunity to learn more about the new Birmingham Masters Scholarships and to meet current Masters students. It's the perfect opportunity to find out more about postgraduate life in a relaxed and informal setting. <i>Refreshments will be provided.</i> | Lecture Room 8, Arts Building (R16) |
| College of Arts and Law Graduate School | 2.00–3.00pm | Drop-in session for MA Humanities – Dr Jagbir Jhutti-Johal | Room 248, European Research Institute (G3) |
| Birmingham Law School | 3.00–3.30pm | Tour of Law facilities | Reception, Law Building (R1) |
| | 3.30–4.00pm | Refreshments and informal chat with tutors | Senior Common Room, Law Building (R1) |
| | 4.00–4.45pm | Introduction to LLM programmes – Professor Jean McHale | Room G16, Law Building (R1) |
| | 4.00–4.45pm | Introduction to Law postgraduate research – Dr Djakhongir Saidov | Room G9, Law Building (R1) |
| | 4.00–4.45pm | Introduction to LLB for Graduates – Dr Stephen Smith | Room G5, Law Building (R1) |
| English, Drama and American & Canadian Studies | Department of English Language and Applied Linguistics | | |
| | 3.00–4.00pm | Drop-in session for Translation Studies – Dr Gabriela Saldanha | S314 (3rd floor), 52 Pritchatts Road (G9) |
| | 3.30–4.30pm | Drop-in session for postgraduate research in English Language and Applied Linguistics – Professor Michael Toolan | Room 325, 52 Pritchatts Road (G9) |
| | 4.00–5.00pm | Drop-in session for postgraduate taught programmes in English Language – Dr Robert Holland | Room S115, 1st floor, 52 Pritchatts Road (G9) |
| | Department of English Literature* | | |
| | 4.00–5.00pm | Drop-in session for MA Literature and Culture (formerly MA English Literature) – Dr Emily Wingfield and Professor Andrzej Gasiorek. <i>Refreshments will be provided.</i> | Room 104, Arts Building (R16) |
| | 4.00–5.00pm | Drop-in session for postgraduate research in English Literature – Dr Rex Ferguson | Room 113, Arts Building (R16) |
| | Department of Film and Creative Writing | | |
| | 4.00–5.00pm | Introduction to postgraduate programmes in Creative Writing – Dr Luke Kennard | Room 141, Arts Building (R16) |
| | 4.00–4.30pm | Introduction to MA Film and Television – Dr Richard Langley | J D Fage Library (Room 250), Arts Building (R16) |
| School of History and Cultures | Department of African Studies and Anthropology | | |
| | 3.30–4.30pm | Drop-in session for African Studies – Professor Karin Barber | Room 246, Arts Building (R16) |
| | Department of Classics, Ancient History and Archaeology | | |
| | 4.00–5.00pm | Introduction to MA Archaeology – Paul Garwood | Peter Gelling Library (Room 315), Arts Building (R16) |
| | 4.00–5.00pm | Drop-in session for MA Antiquity – Dr Philip Burton | Room 316, Arts Building (R16) |
| | 4.00–5.00pm | Drop-in session for Byzantine Studies – Dr Ruth Macrides | Room 445, Arts Building (R16) |
| | 4.00–5.00pm | Drop-in session for Egyptology – Dr Tony Leahy | Room 311, Arts Building (R16) |
| | 4.00–5.00pm | Drop-in session for Modern Greek Studies and postgraduate research in Classics, Ancient History and Archaeology – Professor Dimitris Tziovas | Room 424, Arts Building (R16) |

*Please note that staff from the Shakespeare Institute will not be available at the Open Day. Visits to the Institute on alternative dates can be arranged, but must be scheduled in advance. See: www.birmingham.ac.uk/shakespeare

College of Arts and Law *Continued*

| Academic School | Time | Event | Location |
|--|---|---|---|
| School of History and Cultures <i>continued</i> | Department of History | | |
| | 3.30–4.00pm | Drop-in session for MA Contemporary History – Dr Simon Jackson | Room 330, Arts Building (R16) |
| | 3.30–4.00pm | Drop-in session for MA Renaissance, Reformation and Early Modern Studies and MRes Early Modern History – Dr Jonathan Willis | Room 325, Arts Building (R16) |
| | 4.00–5.00pm | Drop in session for postgraduate research in History – Dr Matt Houlbrook | Room 343, Arts Building (R16) |
| | 4.00–5.00pm | Drop-in session for MA Global History – Dr Lucie Ryzova | Room 443, Arts Building (R16) |
| | 4.00–5.00pm | Drop-in session for MA West Midlands History – Dr Malcolm Dick | Room 320, Arts Building (R16) |
| | 4.15–5.15pm | Modern History research seminar: <i>Mrs Thatcher's peacock blue sari: ethnic minorities, electoral politics, and the Conservative Party, c.1951–1986</i> – Dr Matthew Francis | Rodney Hilton Library, 3rd floor, Arts Building (R16) |
| | Ironbridge International Institute for Cultural Heritage | | |
| | 2.00–3.00pm | Drop-in session for postgraduate programmes at the Ironbridge Institute for Cultural Heritage. <i>Refreshments will be provided.</i> | 3rd floor, European Research Institute Building (G3) |
| Languages, Cultures, Art History and Music | 3.30–4.30pm | Drop-in session for Sexuality and Gender Studies – Professor Lisa Downing | Room 307, Ashley Building (R17) |
| | Department of Art History, Film and Visual Studies | | |
| | 4.00–5.00pm | Drop-in session for MA Art History and Curating and MA, MRes and PhD History of Art – Dr Kate Ince | Room 416, Ashley Building (R17) |
| | Department of Modern Languages | | |
| | 3.00–4.00pm | Drop-in session for Translation Studies – Dr Gabriela Saldanha | S314 (3rd floor), 52 Prichatts Road (G9) |
| | 3.30–4.30pm | Drop-in session for Italian Studies – Dr Ita MacCarthy | Room 309, Ashley Building (R17) |
| | 3.30–4.30pm | Drop-in session for MA Holocaust and Genocide – Dr Isabel Wollaston | Room 249, European Research Institute (G3) |
| | 4.00–5.00pm | Drop-in session for French Studies – Dr Stephen Forcer | Room 306, Ashley Building (R17) |
| | 4.00–5.00pm | Drop-in session for German Studies – Dr Nigel Harris | Room 212, Ashley Building (R17) |
| | 4.00–5.00pm | Drop-in session for Russian Studies – Dr Natasha Rulyova | Room 317, Ashley Building (R17) |
| | 4.00–5.00pm | Drop-in session for MA Colonial and Postcolonial Studies – Dr Conrad James | Room 110, Ashley Building (R17) |
| | 4.00–5.00pm | Drop-in session for MRes Modern Languages/Hispanic Studies – Professor Francis Lough | Room 112, Ashley Building (R17) |
| | Department of Music | | |
| | 4.00–5.00pm | Drop-in session for postgraduate taught programmes in Music – Dr Eliot Bates | Room 421, Arts Building (R16) |
| | 4.00–5.00pm | Drop-in session for postgraduate research programmes in Music – Dr Matthew Riley | Room 118, Bramall Building (R12) |
| Philosophy, Theology and Religion | Department of Philosophy | | |
| | 4.00–5.00pm | Drop-in session for postgraduate taught programmes in Philosophy – Dr Maja Spener | Room 145, European Research Institute (G3) |
| | 4.00–5.00pm | Drop-in session for MA Global Ethics, MA Human Rights and Human Values and PhD Global Ethics – Dr Scott Wisor | Room 221, European Research Institute (G3) |
| | 4.00–5.00pm | Drop-in session for Philosophy distance learning MA and PhD – Dr Darragh Byrne | Room 153, European Research Institute (G3) |
| | 4.00–5.00pm | Drop-in session for MRes Philosophy and PhD Philosophy – Dr Nick Jones | Room 218, European Research Institute (G3) |
| | Department of Theology and Religion | | |
| | 3.30–4.30pm | Drop-in session for Pentecostal and Charismatic Studies – Professor Allan Anderson | Room 250, European Research Institute (G3) |
| | 3.30–5.00pm | Institute for Textual Scholarship and Electronic Editing. <i>Please feel free to drop in and meet our current students.</i> | Room 228, European Research Institute (G3) |
| | 3.30–5.00pm | Drop-in session for Biblical Studies and Religion, Sex and Gender – Dr Deryn Guest | Room 210, European Research Institute (G3) |
| | 5.00–6.30pm | Cadbury Lecture: Anti-Platonic Realism – Professor William Lane Craig | Lecture Theatre 1, Arts Building (R16) |

Birmingham Masters Scholarship Scheme

224 free Masters places for 2015

- 224 FREE -
**MASTERS
PLACES**
FOR 2015 ENTRY

A Masters qualification has always been a valuable asset – one that on average boosts your earning potential by £200,000* and can set you on the path to your dream career – but there has never been a better time to apply to the University of Birmingham than right now.

For 2015 entry, the University has 224 new £10,000 scholarships available for Masters students from under-represented groups, jointly funded by the British government. This means that there's all the more reason to make 2015 your Birmingham Masters year.

Selection criteria

You could be eligible for a Birmingham Masters Scholarship if you are:

- Domiciled in the UK or EU
- Progressing from an undergraduate course for which you were charged the higher tuition fee (applicable since 2012–13)
- Studying full time or part time for a maximum of two years
- Undertaking a taught-Masters course in an eligible subject (exclusions include Nursing and teacher training)
- From a group that is under-represented among the institution's taught-Masters population

Awards will then be allocated on the basis of merit.

Next steps

Beyond the transferable skills that you will acquire during your studies, a Masters from Birmingham will give you the chance to engage in critical enquiry, to grow as a scholar and to develop subject-specific, specialist knowledge that is proved to be sought-after by employers.

For further details of the Scheme, and to find out whether you are eligible for a Birmingham Masters Scholarship, visit:

[www.birmingham.ac.uk/
mastersscholarships](http://www.birmingham.ac.uk/mastersscholarships)

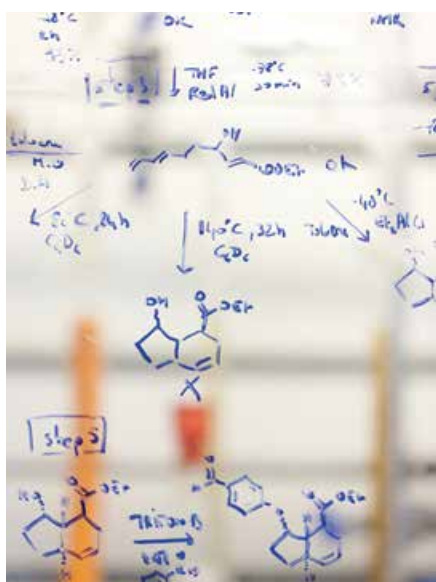
*Average increase in earnings of a Masters graduate over the course of an average working life (compared with a Bachelors graduate). Statistic taken from *The Postgraduate Premium* (The Sutton Trust, 2013).



College of Engineering and Physical Sciences

Engineering and Physical Sciences covers a broad range of world-leading research. From atoms to astronomy, computers to cars and robots to robust materials, our goal is to transform our understanding of the world to make life easier, healthier and more sustainable. The College plays a significant role in creating new knowledge, training new generations of engineers and scientists, and interfacing with industry. It consists of the following schools: Chemical Engineering; Chemistry; Civil Engineering; Computer Science; Electronic, Electrical and Systems Engineering; Mathematics; Mechanical Engineering; Metallurgy and Materials; and Physics and Astronomy.

| Academic School | Time | Event | Location |
|--|-------------|--|---|
| University Graduate School | 5.15–6.30pm | Café PhD – an opportunity to meet current doctoral researchers; hear about their work and their experiences of PhD life, and to ask questions in a relaxed and informal setting. <i>Refreshments will be provided.</i> | Lecture Room 4, Arts Building (R16) |
| | 5.15–6.30pm | Café Masters – an opportunity to learn more about the new Birmingham Masters Scholarships and to meet current Masters students. It's the perfect opportunity to find out more about postgraduate life in a relaxed and informal setting. <i>Refreshments will be provided.</i> | Lecture Room 8, Arts Building (R16) |
| Chemical Engineering | 4.00–5.00pm | Drop-in session for all postgraduate programmes in the School, plus tours – Dr Gary Leeke | Report to Reception, Chemical Engineering Building (Y11) |
| Chemistry | 2.00–4.00pm | Drop-in session for MSc Drug Discovery and Medicinal Chemistry – Professor Nigel Simpkins | Room 214, Haworth Building (Y2) |
| Civil Engineering | 3.00–3.30pm | Introduction to postgraduate opportunities within the School of Civil Engineering – Dr Gurmel Ghataora | Room B07, Civil and Mechanical Engineering Building (Y3) |
| Computer Science | 3.00–4.00pm | Introduction to MSc Computer Science and the changes that have been made in the past 12 months – Professor Uday Reddy | Room G35, Chemical Engineering Building (Y11) |
| | 4.00–4.30pm | Introduction to our MSc programmes – Dr Tom Chothia | Room UG05, Learning Centre (R28) |
| Electronic, Electrical and Systems Engineering | 4.00–5.00pm | Introduction to our MSc programmes – Dr Michael Antoniou | Room N533, Gisbert Kapp Building (G8) |
| Mathematics | 2.00–3.00pm | Introduction to postgraduate opportunities in Mathematics and Statistics and Q&A | Room 116 Maths Learning Centre, Watson Building (R15) |
| | 7.30–8.30pm | Mathematical Lego – part of the University's Arts & Science Festival | Lecture Theatre A, Watson Building (R15) |
| Mechanical Engineering | 2.00–4.00pm | Drop-in session for MSc Advanced Mechanical Engineering with Programme Director – Dr Mozafar Saadat | Room S10F, Civil and Mechanical Engineering Building (Y3) |
| | 2.00–4.00pm | Drop-in session for MScs in Engineering, Operations and Project Management with Programme Director – Dr Andrew Tobias | Room S16, Civil and Mechanical Engineering Building (Y3) |
| Metallurgy and Materials | 4.00–5.00pm | Drop-in session for all postgraduate programmes – Professor Hanshan Dong | Room 2B06, Metallurgy and Materials Building (G6) |
| Physics and Astronomy | 2.00–4.00pm | Drop-in session for PhD opportunities in the School plus tour of the School and facilities | Foyer, Physics West Building (R8) |



College of Life and Environmental Sciences

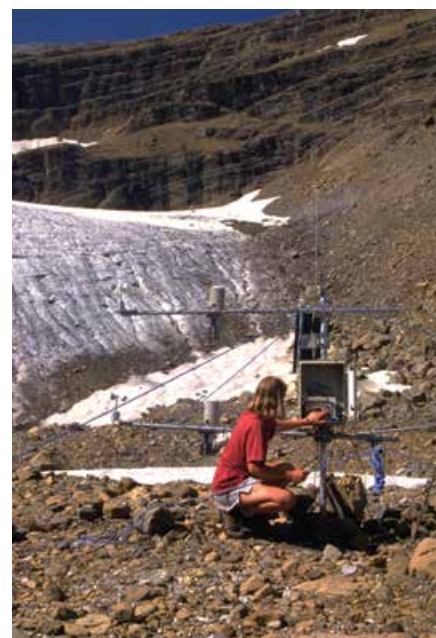
Dedicated to exploring and learning about the diversity and evolutionary challenges of life in all its forms, the College of Life and Environmental Sciences enjoys internationally recognised strengths in teaching and research. The College uses training, fieldwork and excellent facilities to enable students to learn generic and discipline-specific skills while studying exciting topics – ranging from ecology through to cancer research and forensic psychology. It consists of the following four schools: Biosciences; Geography, Earth and Environmental Sciences; Psychology; and Sport, Exercise and Rehabilitation Sciences.

| Academic School | Time | Event | Location |
|---|-------------|---|--|
| University Graduate School | 3.30–4.30pm | Café PhD – an opportunity to meet current doctoral researchers, to hear about their work and their experiences of PhD life, and to ask questions in a relaxed and informal setting. <i>Refreshments will be provided.</i> | Lecture Room 4, Arts Building (R16) |
| | 5.15–6.30pm | Café Masters – an opportunity to learn more about the new Birmingham Masters Scholarships and to meet current Masters students. It's the perfect opportunity to find out more about postgraduate life in a relaxed and informal setting. <i>Refreshments will be provided.</i> | Lecture Room 8, Arts Building (R16) |
| Biosciences | 2.00–3.00pm | Opportunity for tours of the facilities led by current postgraduate students. | Main Reception Area, Biosciences Building (R27) |
| | 3.00–3.40pm | Masters programmes in the School of Biosciences: <ul style="list-style-type: none"> ■ Welcome and Introduction to Masters degrees ■ Introduction to MSc Molecular Biotechnology ■ Introduction to MSc Microbiology and Infection ■ Introduction to MRes and MSc Toxicology ■ Introduction to MRes Molecular and Cellular Biology | Room WG04, Biosciences Building (R27) |
| | 3.45–4.15pm | Refreshments and informal question and answer session about PhD opportunities in Biosciences | Room WG04, Biosciences Building (R27) |
| Geography, Earth and Environmental Sciences | 2.00–2.40pm | Introduction to our Environmental Health and Atmospheric Science Masters programmes, including: <ul style="list-style-type: none"> ■ MSc Air Pollution Management and Control ■ MSc Applied Meteorology and Climatology ■ MSc Environmental Health ■ MSc Public and Environmental Health Science ■ MSc Science of Occupational Health, Safety and the Environment ■ MRes Environmental and Biological Nanoscience | Room 125, 1st floor, Geography Building (R26) |
| | 2.00–2.40pm | Introduction to our Geography and Urban and Regional Planning Masters programmes, including: <ul style="list-style-type: none"> ■ MSc River Environments and their Management ■ MSc Research in Human Geography ■ MRes Research in Human Geography ■ MSc Urban and Regional Planning | Room SG18, Biosciences Building (R27) |
| | 2.00–2.40pm | Introduction to our Earth Sciences Masters programmes, including: <ul style="list-style-type: none"> ■ MSc Hydrogeology ■ MSc Applied and Petroleum Micropalaeontology ■ MSc Nuclear Decommissioning and Waste Management | Paleobiology Lab, Aston Webb Building (R4) |
| | 2.45–3.00pm | Introduction to PhD opportunities in the School | Room G34, Ground floor, Geography Building (R26) |
| | 3.30–4.00pm | Refreshments and informal question and answer session with course tutors and current students. There will also be the opportunity to take a tour of the facilities led by current postgraduate students. | The Undercroft (café area), Ground floor, Biosciences Building (R27) |
| | | | |

College of Life and Environmental Sciences

Continued

| Academic School | Time | Event | Location |
|--|-------------|--|--|
| Psychology | 2.00–2.15pm | Introduction to our MSc and MA programmes | Room 1.20, Hills Building (R3) |
| | 2.30–2.45pm | Introduction to Clinical Psychology programmes | Room 1.20, Hills Building (R3) |
| | 2.45–3.00pm | Introduction to Cognitive Behaviour Therapy Programmes | Room 1.20, Hills Building (R3) |
| | 3.00–3.15pm | Introduction to our PhD programmes | Room 1.20, Hills Building (R3) |
| | 3.15–4.00pm | Refreshments and informal question and answer session with course tutors and current students. There will also be the opportunity to take a tour of the facilities led by current postgraduate students. | Reception area, Hills Building (R3) |
| Sport, Exercise and Rehabilitation Sciences | 3.00–3.30pm | Introduction to the postgraduate Coaching, Exercise, Sport Sciences, Physical Education and Sport Policy programmes | Lecture Theatre 2, Sport, Exercise and Rehabilitation Sciences Building (Y14) |
| | 3.00–3.30pm | Introduction to the post-registration Physiotherapy and Health-related MSc programmes | Room G86, Ground floor, Sport, Exercise and Rehabilitation Sciences Building (Y14) |
| | 3.30–4.00pm | Refreshments and informal question and answer session with course tutors and current students. There will also be the opportunity to take a tour of the facilities led by current postgraduate students. | The Atrium (foyer), Sport, Exercise and Rehabilitation Sciences Building (Y14) |



College of Medical and Dental Sciences

The College of Medical and Dental Sciences is a major international centre for research and education in medicine, medical sciences, dentistry* and nursing. Bringing together healthcare-related research and education, the College consists of the following five schools: Cancer Sciences; Clinical and Experimental Medicine; Dentistry; Health and Population Sciences; and Immunity and Infection. The College provides an impressive portfolio of graduate-entry, postgraduate taught and research programmes. Programmes at all levels are delivered by some of the UK's most respected clinicians and health professionals, providing you with the best possible learning experience. To find out more please visit: www.birmingham.ac.uk/mds

 [collegemds](https://www.facebook.com/collegemds)  [@unibirm_MDS](https://twitter.com/unibirm_MDS)

| Academic programme | Time | Event | Location |
|--|-------------|--|--|
| Graduate Entry Medicine (GEC) – four-year MBChB programme | 1.30–2.00pm | Meet the GEC students and tour of the GEC rooms | Meet at Reception, Medical School (B1) |
| | 2.00–2.45pm | GEC programme overview – Dr Remigio Zvauya | |
| Masters courses drop-in sessions – your opportunity to talk to the programme leads directly | 2.00–3.00pm | MSc Advancing Nursing Practice – Dr Cara Bailey | Meet at Reception, Medical School (B1) |
| | 2.00–4.00pm | MRes Cardiovascular Science – Dr Steve Thomas | Meet at Reception, Medical School (B1) |
| | 2.00–4.00pm | MSc Immunology and Immunotherapy – Dr John Curnow | Meet at Reception, Medical School (B1) |
| | 2.00–4.00pm | Physician Associate Studies Postgraduate Diploma – Dr David R Leonard | College of Medical and Dental Sciences stand, Great Hall, Aston Webb Building (R6) |
| | 2.00–4.00pm | MSc Clinical Oncology (full and part time) Magdalena Skrybant – programme administrator | College of Medical and Dental Sciences stand, Great Hall, Aston Webb Building (R6) |
| | 2.00–4.00pm | MSc Musculoskeletal Ageing and Health – Professor Janet Lord | College of Medical and Dental Sciences stand, Great Hall, Aston Webb Building (R6) |
| | 2.00–4.00pm | MSc Health Economics and Health Policy MSc Health Economics and Econometrics – Dr Pelham Barton | Go to Institute of Occupational and Environmental Medicine (Y16) |
| | 3.00–4.00pm | Masters in Public Health (all programmes) – Dr Krishnarajah Nirantharakumar | Room 107, Institute of Occupational and Environmental Medicine (Y16) |
| | 3.00–4.00pm | MSc Genomic Medicine – Dr Peter F Searle | Meet at Reception, Medical School (B1) |
| | 3.00–4.00pm | MRes Clinical Health Research – Dr Nikolaos Efstathiou | Meet at Reception, Medical School (B1) |
| | 3.00–4.00pm | MRes Cancer Sciences – Dr Roger Watson | Meet at Reception, Medical School (B1) |
| | 5.15–6.30pm | Café Masters – an opportunity to learn more about the new Birmingham Masters Scholarships and to meet current Masters students. It's the perfect opportunity to find out more about postgraduate life in a relaxed and informal setting. <i>Refreshments will be provided.</i> | Lecture Room 8, Arts Building (R16) |
| PhD programmes | 2.00–3.00pm | Doctoral research in Nursing – Dr Cara Bailey | Meet at Reception, Medical School (B1) |
| | 5.15–6.30pm | Café PhD – an opportunity to meet current doctoral researchers; hear about their work and their experiences of PhD life, and to ask questions in a relaxed and informal setting. <i>Refreshments will be provided.</i> | Lecture Room 4, Arts Building (R16) |

* Please note that staff from the School of Dentistry will not be available at the Open Day. For more information please visit: www.birmingham.ac.uk/dentalpractice-distance



CAMPUS TOURS AND CONVERSATION

— POSTGRADUATE —
**MENTOR
SCHEME**



Enjoyed your visit and want to come back to learn more about the University and life as a postgraduate student? Each month, interested pre-applicant postgraduates have the opportunity to register for our monthly Postgraduate Campus Tours and Conversation afternoons.

Current postgraduate students will offer full campus tours, after which there will be the opportunity to talk informally over complimentary refreshments. Our current students will be able to give an insight into postgraduate study, the University, and life in Birmingham more generally. As far as possible we will ensure that all aspects are tailored to your own subject interests.

Tours last approximately 45 minutes to an hour. They include all the main facilities on campus and those that will be of specific interest to your chosen subject area.

**To book your place please phone
0121 414 7136 or email
Jessica Bowen: j.bowen.2@bham.ac.uk**

College of Social Sciences

Generating new knowledge about society and transferring this in ways that improve wellbeing is central to all the work undertaken in this research-led college. Social Sciences brings together over 400 academics (including almost 100 professors) and around 200 administrative staff across a range of disciplinary and interdisciplinary fields. The College consists of the following four schools: Birmingham Business School; Education; Government and Society; and Social Policy.

| Academic School/ Department | Time | Talk | Location |
|--|-------------|--|---|
| University Graduate School | 5.15–6.30pm | Café PhD – an opportunity to meet current doctoral researchers; hear about their work and their experiences of PhD life, and to ask questions in a relaxed and informal setting. <i>Refreshments will be provided.</i> | Lecture Room 4, Arts Building (R16) |
| | 5.15–6.30pm | Café Masters – an opportunity to learn more about the new Birmingham Masters Scholarships and to meet current Masters students. It's the perfect opportunity to find out more about postgraduate life in a relaxed and informal setting. <i>Refreshments will be provided.</i> | Lecture Room 8, Arts Building (R16) |
| Business | 3.00–5.00pm | Drop-in session for taught MSc and MBA programmes offering an opportunity to meet with programme directors, academics, current students and the Careers in Business department. | Room G13, University House (O3) |
| | 3.00–5.00pm | Introduction to doctoral research (PhD) opportunities in the School – Professor David Maddison | Room G13, University House (O3) |
| Education | 1.00–3.00pm | Drop-in session for Inclusion and Special Educational Needs, and Special Educational Needs and Disabilities – Dr Matthew Schuelka | Room 118, Education Building (R19) |
| | 2.00–4.00pm | Drop-in session for Autism programmes – Dr Kerstin Wittermeyer and other programme tutors | Room 107, Education Building (R19) |
| | 3.00–4.30pm | Drop-in session for Applied Educational and Child Psychology Doctorate – Beverley Burke | Room G63, Education Building (R19) |
| | 3.00–4.30pm | Drop-in session for research programmes (PhD, MRes, MA by Research and EdD) – Helen Joinson | Room G10, Education Building (R19) |
| | 4.00–5.00pm | Drop-in session for Primary Initial Teacher Training (PGDipEd and School Direct) | Room 422, Education Building (R19) |
| | 4.00–5.00pm | Drop-in session for Secondary Initial Teacher Training (PGDipEd and School Direct) | Room 224, Education Building (R19) |
| International Development | 4.00–5.00pm | Introduction to studying International Development at postgraduate level | Room 429, 4th floor, Muirhead Tower (R21) |
| Institute for Conflict, Cooperation and Security | 4.00–5.00pm | Introduction to studying the Global Cooperation and Security MSc | Room 431, 4th floor, Muirhead Tower (R21) |
| Social Policy and Social Work | 2.00–3.00pm | Drop-in session for research programmes in the School of Social Policy | Room 923, 9th floor, Muirhead Tower (R21) |
| | 2.00–4.00pm | Drop-in session for Social Work | Great Hall, Aston Webb Building (R6) |
| | 3.30–4.00pm | Drop-in session and introduction to studying Social Policy at Birmingham | Room 417, 4th floor, Muirhead Tower (R21) |



CAFÉ MASTERS AND CAFÉ PHD

— 224 FREE —
**MASTERS
PLACES**
FOR 2015 ENTRY

An opportunity to get first-hand, impartial advice on what it's actually like to be a postgraduate student at Birmingham.

Are you interested in undertaking postgraduate study at the University of Birmingham?

Do you want to meet current postgraduates working in your field?

Would you like to get first-hand advice on writing a winning application and on getting funding?

If you answered yes to one or more of these questions, then our café events are for you. The cafés are a social gathering, a discussion forum and an information session rolled into one. Ultimately, the cafés are informal social events designed to introduce you to the exciting postgraduate community at Birmingham and to give you the opportunity to get peer-to-peer advice.

At the Postgraduate Open Day on 18 March, we will be running a Café Masters and a Café PhD event:

- Café Masters: 5.15–6.30pm in Lecture Room 8, Arts Building (R16)
- Café PhD: 5.15–6.30pm in Lecture Room 4, Arts Building (R16)

The Masters event will include advice on applying for a Birmingham Masters Scholarship, and the PhD event will offer an opportunity to engage with some of the exciting research currently being undertaken by our doctoral (PhD) researchers. Refreshments will be provided.

Come along for the whole session, or drop in whenever you can.

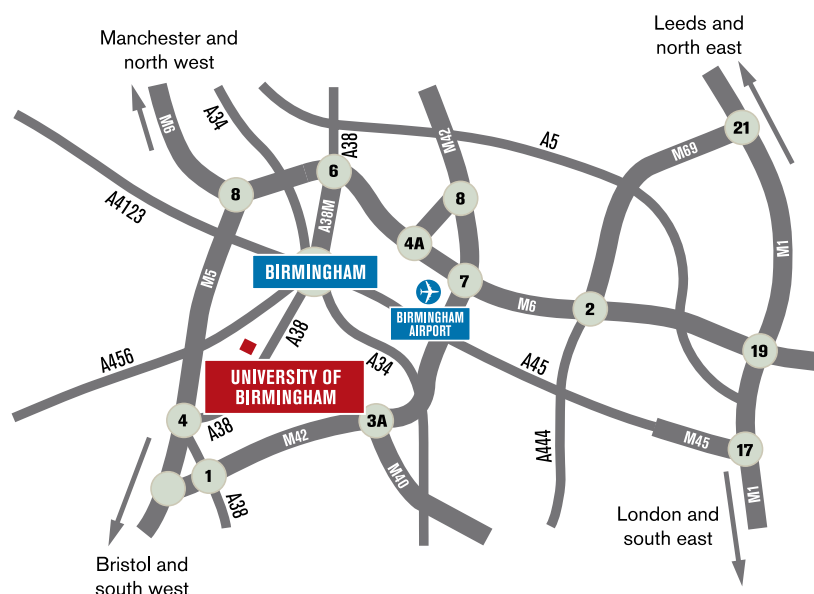


Refreshments

| Location (map numbers in brackets) | Facilities | Opening times |
|--|---|------------------|
| Bramall Music Building (R12) | Costa Bramall: Costa hot and cold beverages, cakes and light snacks | 8.00am–5.00pm |
| Poynting Physics Building (R13) | Go Coffee Shop: Homemade cakes, soup, pre-packed sandwiches and speciality drinks | 9.00am–3.30pm |
| Arts Building (R16) | Cyber Go: Homemade cakes, pre-packed sandwiches and speciality drinks | 9.00am–3.30pm |
| Education Building (R19) | Skool Café: Homemade cakes, soup, pre-packed sandwiches and speciality drinks | 8.30am–3.00pm |
| Muirhead Tower (R21) | Starbucks: Starbucks tea and coffee, snacks and light lunches | 8.00am–7.00pm |
| Main Library (R22) | iLounge Coffee Shop: Homemade cakes, panini, pre-packed sandwiches and speciality drinks | 9.00am–8.00pm |
| University Centre (R23) | Café Go: Jacket potatoes, handmade sandwiches, salads, panini, soup and speciality drinks | 8.00am–5.30pm |
| | Costa: Speciality coffee and pre-packed sandwiches, panini and cakes | 8.00am–8.00pm |
| | Go Central: Breakfast, Asian, Italian and British cuisine | 8.00am–4.00pm |
| | Go Mex: Mexican burrito bar | 10.30am–4.30pm |
| Staff House (R24) | Ground Floor – Bratby Bar: Hot and cold food, alcoholic beverages and soft drinks | 12.00noon–2.30pm |
| | First Floor – Café Aroma: Hot and cold beverages, sandwiches, cakes and panini | 8.00am–4.00pm |
| | Second Floor – Noble Room: Traditional carvery lunch, salads, soups and other hot food | 12.00noon–2.00pm |
| Munrow Sports Centre (R25) | Raising The Bar: Starbucks tea and coffee, snacks and light lunches | 8.30am–2.30pm |
| Biosciences (R27) | Go: Homemade cakes, jacket potatoes, soup, panini, pre-packed sandwiches and speciality drinks | 10.00am–3.00pm |
| Learning Centre (R28) | Go2: Homemade cakes, soup, panini, pre-packed sandwiches and speciality drinks | 8.00am–5.00pm |
| Guild of Students (O1) | Costa: Speciality coffee and pre-packed sandwiches, panini and cakes | 8.30am–3.30pm |
| | Subway: A range of sandwich fillings, salads, crisps, and freshly baked cookies and muffins | 10.00am–4.00pm |
| University House (O3) | Business School Lounge: Jacket potatoes, panini, soup, small selection of hot meals, packaged sandwiches, soup and speciality drinks | 8.30am–4.30pm |
| Civil and Mechanical Engineering (Y3) | Go Coffee Shop: Homemade cakes, soup, pre-packed sandwiches and speciality drinks | 9.00am–3.30pm |
| Chemical Engineering (Y11) | Go Coffee Shop: Homemade cakes, panini, pre-packed sandwiches and speciality drinks | 10.00am–3.00pm |
| Medical School (B1) | Food Court: Breakfast, handmade sandwiches, salads, 'Phat pasty counter', snacks and speciality drinks | 8.00am–5.00pm |
| 52 Pritchatts Road (G9) | Gisbert Kapp Cafe: Jacket potatoes, handmade sandwiches, salads, panini, soup and speciality drinks | 8.00am–4.30pm |
| Selly Oak campus: Orchard Learning Resources Centre | Go: Homemade cakes, jacket potatoes, soup, panini, pre-packed sandwiches and speciality drinks | 9.30am–2.30pm |



Road map and travel information



Local travel and parking

Open days are a very busy time for the University and as such we are only able to offer a limited number of parking spaces on these days. For your convenience, we would strongly recommend using public transport to reach us.

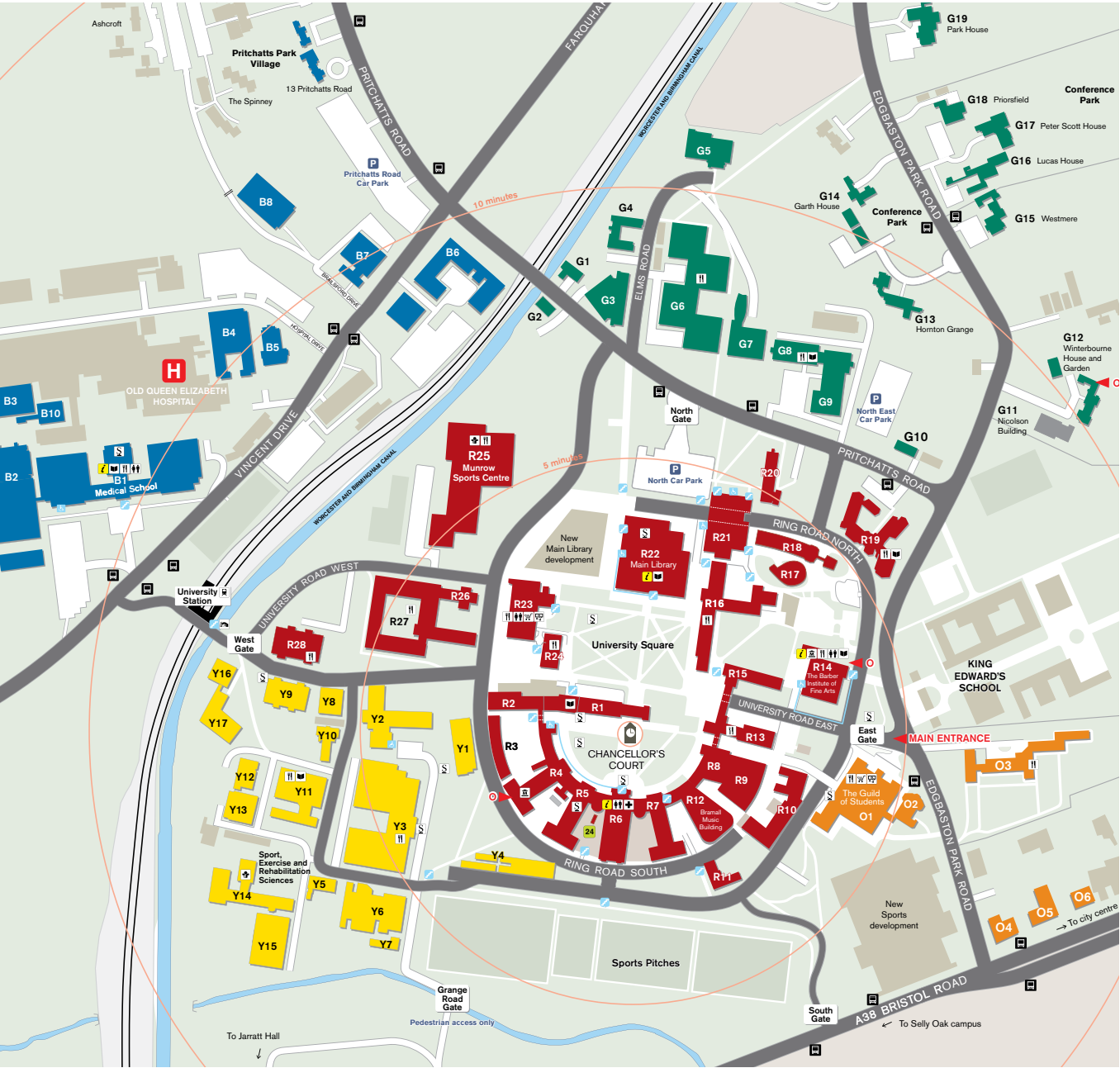
The University of Birmingham is fortunate enough to have its own railway station, 'University'. The centre of the main campus is just a five-minute walk from University station.

- A limited amount of car parking spaces are available for visitors at the AA-signposted North East Car Park (see campus map on page 20). This is a pay and display car park at a rate of £1 per day (please note that availability of spaces cannot be guaranteed).
- If you are travelling by train, travel to Birmingham New Street. Then take a Cross-City train to University station – at least four trains depart from New Street station every hour for University station (train line: Longbridge or Redditch).
- Regular bus services (nos. 61, X62, 63) run from Corporation Street in the city centre.

For information on all of the travel options available to you please visit: www.birmingham.ac.uk/travel



Edgbaston campus map



- | | | | | | |
|-----|-----------------------------------|-----|---|-----|----------------------------------|
| R1 | Law Building | R26 | Geography Building | B1 | Medical School |
| R3 | Hills Building | R27 | Biosciences | B2 | Institute of Biomedical Research |
| R4 | Earth Sciences Aston Webb A Block | R28 | Learning Centre | G3 | European Research Institute |
| R6 | Aston Webb Building | O1 | Guild of Students | G6 | Metallurgy and Materials |
| R10 | Physics East Building | O2 | St Francis Hall | G8 | Gisbert Kapp Building |
| R12 | Bramall Music Building | O3 | Inter-denominational Chaplaincy | G9 | 52 Pritchatts Road |
| R13 | Poynting Physics Building | Y2 | Haworth Building | G12 | Winterbourne House and Garden |
| R14 | Barber Institute of Fine Arts | Y3 | Civil and Mechanical Engineering | | |
| R15 | Watson Building | Y9 | Computer Science Building | | |
| R16 | Arts Building | Y11 | Chemical Engineering | | |
| R17 | Ashley Building | Y14 | Sport, Exercise and Rehabilitation Sciences | | |
| R18 | Strathcona Building | Y16 | Institute of Occupational Health | | |
| R19 | Education Building | Y17 | Public Health Building | | |
| R20 | JG Smith Building | | | | |
| R21 | Muirhead Tower | | | | |
| R22 | Main Library | | | | |
| R23 | University Centre | | | | |
| R24 | Staff House | | | | |
| R25 | Munrow Sports Centre | | | | |

This map, with a more detailed index, can be found on the University's website at:
www.birmingham.ac.uk/directions

Key

Y2

Building name

?

Information point

♿

Level access entrance

🚶

Steps

P

Visitors car park

H

Hospital

🔒

24-hour security

🚌

Bus stops

📖

Library

🏛️

Museum

🏋️

Sport facilities

🏥

First aid

🍽️

Food and drink

🛒

Retail

🚻

Toilets

🏧

ATM

🌉

Canal bridge

🗿

Sculpture trail

🚉

Rail

⌚

average walk time from Chancellor's Court