



UNIVERSITY OF
BIRMINGHAM

BIRMINGHAM FOUNDATION ACADEMY

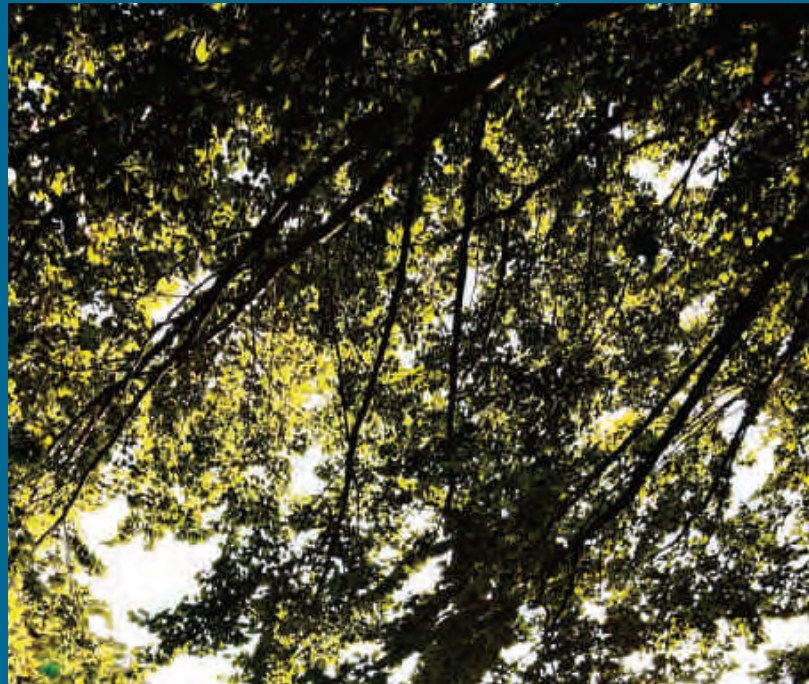


2012 admissions



Students outside University accommodation

AN INSPIRATIONAL
EXPERIENCE AT A
LEADING GLOBAL
UNIVERSITY.



Chancellor's Court at the heart of campus

Welcome from the Vice-Chancellor

THE BIRMINGHAM FOUNDATION ACADEMY IS A NEW AND EXCITING DEVELOPMENT FOR OUR UNIVERSITY, AND I AM DELIGHTED THAT YOU ARE CONSIDERING BEING PART OF THIS NEW INITIATIVE.



With more than a century of academic excellence, the University of Birmingham is pleased to introduce the Birmingham Foundation Academy, which is anchored in the University's global reputation and our long experience of welcoming students from across the world.

As a student at the Birmingham Foundation Academy, you will be fully immersed in student life at the University and will be a greatly valued member of the Birmingham student community. You will live and study alongside our undergraduate and postgraduate students, free to take advantage of our wide range of academic, sporting and cultural facilities.

Academic standards are high, and you will be taught by the University's own academic staff, many of whom are global experts in their fields. This gives you access to the very latest advances in knowledge within your chosen subject. You will also receive specialist tuition in English language and academic study skills to ensure you are well equipped for progression to undergraduate studies after your Foundation Academy Programme.

All of your teaching will take place on our renowned Edgbaston campus, where historic architecture, a cosmopolitan atmosphere and a leafy green landscape will provide an inspiring backdrop to your studies.

You will be fully supported as you adjust to a new and exciting student lifestyle, and will benefit from a range of specialised services tailored to your individual needs. Unique to the University of Birmingham, our dedicated Residents' Life Co-ordinator will live on site to help you with any day-to-day concerns you may have.

The University has one of the largest international student communities in the UK and a wealth of expertise in supporting students from all parts of the world. We are confident that you will feel happy, safe and at home here.

The Birmingham Foundation Academy could be your springboard to an internationally respected degree and a successful and rewarding career. I sincerely hope you will take the opportunity to join us.

Professor David Eastwood
Vice-Chancellor



Contents

About the Birmingham Foundation Academy	5	Essential information	30
Programme overview	5	The Birmingham Foundation Academy Package	30
		Payment methods	30
Push the boundaries of knowledge	6	How to apply	30
Teaching methods	6	Applying for your student visa	30
Learning environment	7		
		Key dates and contacts	31
Seize the opportunities that will shape your future	8		
International opportunities	8		
Careers and employability	8		
Your university – get involved	9		
Immerse yourself in the Birmingham experience	10		
Campus life	10		
The city of Birmingham	10		
Sporting success	11		
Learning at Birmingham	12		
Learning support	12		
Assessment	12		
Progression	12		
Your academic pathways	13		
Arts and Law Pathway	14		
Engineering and Physical Sciences Pathway	16		
Life and Environmental Sciences Pathway	18		
Medical Sciences Pathway	20		
Social Sciences Pathway	22		
English language and study skills	24		
Core modules	24		
Options for high-level English language speakers	24		
Entry requirements	25		
Academic requirements	25		
Your offer	25		
English language entry requirements	25		
Pre-sessional English language tuition	25		
Your accommodation	26		
Residents' Life Co-ordinator	26		
Your catered package	26		
Student support	28		
Arrival and welcome	28		
Social programme	28		
Immigration advice	28		
Support if you have a disability	28		
The Guild of Students	29		
Supporting your faith	29		



Priorsfield, The Foundation Academy Hub and English Language Centre



Student lounge

About the Birmingham Foundation Academy

THE BIRMINGHAM FOUNDATION ACADEMY PROVIDES AN OPPORTUNITY FOR HIGHLY MOTIVATED LEARNERS WITH AN EXCELLENT ACADEMIC RECORD AND THE WILLINGNESS TO STUDY HARD TO ENTER THE UNIVERSITY ENVIRONMENT ONE YEAR BEFORE THE START OF THE UNDERGRADUATE DEGREE PROGRAMME. IT CAN BE YOUR PATHWAY TO SUCCESSFUL UNDERGRADUATE STUDIES AT BIRMINGHAM OR OTHER TOP UNIVERSITIES THROUGHOUT THE UK.



Why choose the Birmingham Foundation Academy?

As a Birmingham Foundation Academy student, you will benefit from a distinctive, high quality University of Birmingham experience:

- You will be taught entirely on the University's renowned Edgbaston campus
- You will have the choice of academic modules, taught by respected Birmingham academics
- You will be a fully integrated member of our student community, with access to all University facilities
- You will live in dedicated accommodation in the University's newest residence on campus
- A Residents' Life Co-ordinator will live on-site and be a first point of contact for all your welfare concerns
- You will be supported through your adjustment to University life by a professional team who understand your needs

Programme overview

The Foundation Academy programme has five pathways. Upon successful completion of the appropriate pathway, you will be guaranteed progression to an extensive range of our undergraduate programmes in Arts and Law, Engineering and Physical Sciences, Life and Environmental Sciences, Medical Sciences or Social Sciences (academic and English language progression requirements apply for each programme).

Your curriculum will comprise an 80-credit suite of subject-specific modules taught in our colleges by Birmingham academics, together with 40 credits of English language and study skills modules delivered by the University's English for International Students Unit.

You will be taught in English and will be mixing with students from all over the world. You will be constantly improving your academic, linguistic and cultural skills, and by the end of the programme you will be fully prepared for UK student life.

You will be enrolled on to a one-year or a four-year programme at the University of Birmingham. Although you are not tied to the University for your undergraduate studies, by the end of the first year, we expect that you will feel so at home in Birmingham that you will want to stay with us for the full duration of your studies in the UK. If you wish to progress to another UK university, we will offer advice.

Our all-inclusive Birmingham Foundation Academy Package comprises all tuition fees, fully catered en suite, single accommodation (with staff on site 24-hours a day), text books and classroom equipment and full access to all campus facilities.



Push the boundaries of knowledge

AS A BIRMINGHAM FOUNDATION ACADEMY STUDENT, YOU WILL BE INTEGRATED INTO THE UNIVERSITY ENVIRONMENT FROM DAY ONE. YOU WILL BE GUIDED AND SUPPORTED ON YOUR JOURNEY TO BECOMING AN INDEPENDENT AND SELF-MOTIVATED LEARNER.

You will be taught by Birmingham academics from a pioneering, enquiring, international community. Our researchers are constantly advancing the boundaries of knowledge and, as a result, many are global experts within their fields. This gives you a distinct advantage. You will be studying within this stimulating community and your programme will therefore include the very latest emerging theories and ideas.

You will develop new English language and study skills to enable you to advance to undergraduate level. There is a great deal to learn but we will support you all the way to ensure you can progress with confidence to the next stage of your studies.

Teaching methods

At Birmingham you will experience a variety of teaching methods, including lectures, seminars, tutorials, workshops, laboratory work and peer group learning, depending on the pathway you follow. You will be encouraged to think, discuss and engage critically with your subject area. By becoming actively involved in your education, you will develop skills in critical enquiry, debate and self motivation.

Your English language and study skills modules will ensure that, as a Foundation Academy student, you have all the tools you will need for undergraduate study, whatever subject area you choose.

You will be supported by the Academy Team, based in the Foundation Academy Hub and English Language Centre, where English language and study skills modules will be taught. From there you will proceed to the lecture theatres, labs and seminar rooms of the University's five colleges for your academic studies.



Touch table, Cultural Heritage and Learning Hub

'The University of Birmingham enjoys a great world-wide reputation. It is one of the most popular British universities and it was an honour to be part of it. The facilities at the University are very comprehensive and help is available for both study and student life. I do not think I could achieve any of this as easily in a Chinese university.'

Hui Li, BCom Commerce and MSc International Marketing, from China



To ensure your studies proceed smoothly, you will have a tutor in your college, who will provide help and advice with any study-related issues, and will help you to monitor and reflect on your progress.

Learning environment

With the latest classroom technology, Birmingham offers an excellent learning experience. Most of our teaching rooms are equipped with touch-screen digital whiteboards and all have WiFi.



Our Main Library is one of the UK's largest academic libraries, with access to over 2.7 million books and periodicals. A further eight libraries and resource centres offer specialist materials for every subject studied at Birmingham. To allow you flexible access, the Main Library opens late, up to midnight during term time. The Library also houses a range of flexible learning and meeting spaces, from rooms for group work to quiet corners for individual study.

Wherever you are on campus, you will be able to log on to the student portal. This is your personalised gateway to the digital campus, connecting you to email, news, online communities and the e-library, which alone provides access to over 16,000 periodicals, databases, websites and other resources.



Fact

In November 2011 the *International Herald Tribune* ranked Birmingham 55th in the world in its Global Employment Rankings, making us 9th in the UK.

Seize the opportunities that will shape your future

YOUR BIRMINGHAM EXPERIENCE WILL HELP TO PREPARE YOU FOR LIFE AS AN ACTIVE MEMBER OF A GLOBAL SOCIETY. WE OFFER A WEALTH OF OPPORTUNITIES FOR YOU TO GET INVOLVED IN ACTIVITIES OUTSIDE YOUR ACADEMIC PROGRAMME, WHICH WILL BOOST YOUR PROSPECTS IN A COMPETITIVE EMPLOYMENT MARKET AND **HELP TO EQUIP YOU FOR THE CHANGING ECONOMIC LANDSCAPE OF THE 21ST CENTURY.**

International opportunities

Your education at Birmingham will prepare you for a career that has no geographical boundaries. With over 4,000 international students from more than 150 countries, we have one of the largest global student communities in the UK. You will live and study alongside students of all nationalities, enabling you to see the world from a different viewpoint. In addition, 27% of our academic staff are non-UK nationals, demonstrating that Birmingham attracts the brightest talent to its academic community from around the globe.

We have longstanding links with universities throughout the world, including membership of Universitas 21, the prestigious consortium of global research-led universities in 13 countries. Once you progress to your undergraduate degree, this network of global partnerships will offer you exciting international opportunities, such as work experience placements and annual summer schools that attract the best students from across the world to engage in an exchange of culture, experiences and intellect.



Graduate recruitment fair

Careers and employability

Our Careers and Employability Centre offers a range of services that will help you identify and work towards your career goals from the day you arrive at Birmingham. This includes a dedicated careers advice and guidance service delivered by experienced and professionally qualified employability consultants and advisers.

Each year our dedicated Employer Liaison Team organises over 120 employer presentations, graduate recruitment fairs and events. We can also develop work experience opportunities for you, greatly enhancing your employability. Additionally, when you enrol here you will have access to »Progress«, an online environment to help you manage your study and development of your skills.



'The University of Birmingham has a long history. Its campus is amazing and beautiful. The name of the University is well known around the world.'

Maira Tursunbekova, BSc (Hons) Public Policy, Government and Management from Kazakhstan



Your university – get involved

Volunteering is becoming an essential element of the student experience, and is a great way to improve your chances of finding a job once you graduate. At Birmingham there are over 200 opportunities for students to get involved, ranging from conserving the local environment to fundraising for national or international charities.

Joining a student group is another good way to get involved in the student community, make friends and develop your personal skills. The Guild of Students hosts over 200 groups and societies, and you are bound to find one to suit you, whether it is an international society bringing together students from your own country, a debating society or a group related to one of your hobbies or interests.

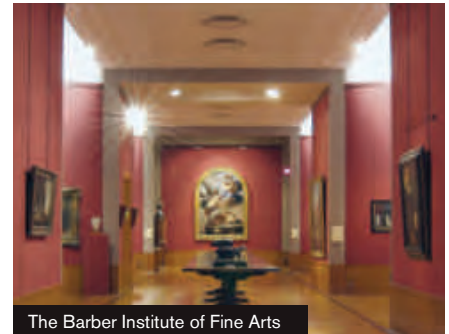
Fact

At almost 100 metres, the University clock tower, known as 'Old Joe', is the tallest freestanding clock tower in the world.



Immerse yourself in the Birmingham experience

LIFE AT THE UNIVERSITY OF BIRMINGHAM OFFERS YOU THE BEST OF BOTH WORLDS – A PEACEFUL, SAFE AND WELCOMING CAMPUS COMMUNITY ON THE DOORSTEP OF ONE OF EUROPE'S MOST DYNAMIC AND CULTURALLY DIVERSE CITIES.



agent, a regular farmers' market, medical and dental surgeries, sports facilities and a train station.

There are few universities with such a wealth of culture on their campus. At Birmingham you can experience some of the finest art in Europe on campus every day of the week by visiting our award-winning Barber Institute of Fine Arts, with its impressive collection of works by some of the world's greatest artists.

The campus combines traditional 'red brick' buildings and state-of-the-art facilities, which are continually being developed and improved. In September 2012 the new Bramall Music Auditorium will open as the latest addition to our campus. This multi-million pound development will provide a 450-seat auditorium for music, opera, drama and prestigious lectures, as well as state-of-the-art rehearsal rooms and recording facilities.



Campus life

Studying in the shadow of striking architecture on a 250-acre green and leafy site, you will be inspired to get the most out of your time here.

Our Edgbaston campus offers a safe, friendly environment, with all the amenities of a small town, including shops, cafés, a fresh fruit and vegetable stall, banks, a post office, a travel

The city of Birmingham

Birmingham is a European centre for retail, commerce and culture, with a proud heritage and modern outlook. The city offers excellent entertainment for all tastes, with a range of leading theatres, museums, art galleries and music venues. It is also home to one of Europe's largest city centre shopping malls,

'I found Birmingham as a city very safe with good access for transportation. I have travelled to so many places in the UK such as London, Bristol and Manchester.'

Wafa Janahi, Law student from Bahrain



Bullring, which provides over 110,000 m² (1.2m sq ft) of retail space, with over 160 shops including Selfridges, Abercrombie and Fitch, Apple and Top Shop.

The city is at the centre of England and at the hub of its transport network, making it a great base from which to explore the UK and mainland Europe. London is only one and a half hours away by train. Birmingham Airport, just 25 minutes by taxi from the Edgbaston campus, offers direct flights to the USA, North Africa, Dubai, and European destinations with connections worldwide via Amsterdam, Frankfurt and Istanbul.

Birmingham is a truly diverse city with a rich cultural mix in both its permanent residents and student population. This cosmopolitan character is reflected in its restaurants, shops and cultural activities. You will be able to find the food that suits your tastes in Birmingham's many cafés and restaurants. If you feel like cooking for yourself and for friends, you can visit the large fruit, vegetable, fish and meat markets, Asian or European supermarkets, where halal meat for example, is readily available.

Birmingham is an exciting destination for young people. It is more than somewhere to study; it is somewhere to build a successful future.



Sporting success

Birmingham is one of the UK's leading sporting universities and is currently placed second in the BUCS (British Universities and Colleges Sport) sports league. Our global sporting reputation will be confirmed in summer 2012 when the Jamaican track and field team, including Olympic Champion sprinter Usain Bolt, will establish their pre-Olympic training camp on our campus.

However, sport is not just for elite athletes at Birmingham. The University swimming pool holds women-only sessions, and students can book tennis or badminton courts and football pitches to play a match with their friends. Our Active Lifestyle programme offers fitness, dance and sports classes to suit all ages, abilities and fitness levels. It is one of the largest programmes of its type in the country and includes everything from boxercise and studio cycling to martial arts, salsa and yoga.



Louise Hazel, University of Birmingham Sports Scholar and Commonwealth Games Gold medal winner



The Birmingham Museum and Art Gallery

Learning at Birmingham

THE UNIVERSITY OF BIRMINGHAM PRODUCES INDEPENDENT LEARNERS WHO ARE CAPABLE OF FORMULATING THEIR OWN IDEAS AND ENGAGING CRITICALLY WITH THEIR SUBJECT. WE ENCOURAGE OUR STUDENTS TO CHALLENGE AND ENQUIRE. **A KEY BENEFIT OF THIS APPROACH IS THAT YOU GAIN THE SKILLS THAT EMPLOYERS ARE LOOKING FOR, SUCH AS INDEPENDENCE, TEAMWORKING, PROBLEM SOLVING AND TIME MANAGEMENT.**

As a Birmingham Foundation Academy student you will be guided and supported to make the transition to becoming an independent and self-motivated learner. You will experience a variety of teaching methods, depending on the academic pathway you follow. These may include:

- **Lectures**

You will listen to and engage with academics who will introduce you to key facts and ideas in your subject. There may be mini-activities and pair work to complete during the session, and follow-up work afterwards. You may wish to take written notes but most lectures are now recorded, so you can access the information afterwards using our virtual learning environment (VLE).

- **Seminars**

You will be encouraged to present and discuss your ideas in small groups and to debate with other students.

- **Tutorials**

Your tutor will provide continuing academic support and guidance on a one-to-one basis.

- **Workshops**

You will engage in problem-solving sessions facilitated by a member of academic staff; these sessions usually involve students working in groups.

- **Laboratory-based work**

You will have a chance to get practical experience and apply the knowledge you have learnt in your lectures to a laboratory setting. Through these sessions you will learn to analyse real-life problems, which will equip you with the practical and analytical skills that are valued by employers. This

mainly applies to modules in Engineering and Physical Sciences, Life and Environmental Sciences and Medical Sciences pathways.

- **Peer group learning**

You may be asked by your tutor to direct a lesson or prepare a presentation with your fellow classmates. By interacting with the lesson material, you will remember the content more effectively.

- **Learning support**

When you enrol at the Foundation Academy, you will be allocated a tutor in the college most appropriate for your pathway, who will provide help and advice with any study-related issues, and will help you to monitor and reflect on your progress.

- **Assessment**

Assessment at the Foundation Academy is by a combination of exams, laboratory work, coursework exercises, project work and written assignments, depending on the subject. Details on how each module is assessed can be found online at: www.birmingham.ac.uk/foundation-academy/pathways

Assessment of your English language progress will be made by the University's English for International Students Unit. If you have made satisfactory progress at the end of your first year at the Foundation Academy, and are progressing to an undergraduate degree programme at the University of Birmingham, you will not be normally required to take another English language test.

- **Progression**

You are guaranteed a place on one of the University's undergraduate programmes, providing you achieve satisfactory grades in the first year on the Foundation Academy programme (academic and English language progression requirements apply for each programme).



Your academic pathways



'I look forward to welcoming you to the Birmingham Foundation Academy and supporting you during your time on the programme. I am sure you will have an intellectually stimulating, enjoyable and rewarding time at Birmingham.'

Dr Steve Minchin
Academic Director, Birmingham Foundation Academy

The Birmingham Foundation Academy has up to five pathways:

- Arts and Law Pathway
- Engineering and Physical Sciences Pathway
- Life and Environmental Sciences Pathway
- Medical Sciences Pathway
- Social Sciences Pathway

When you apply to the Birmingham Foundation Academy, you will be asked to choose the pathway you would like to enter. Once you have received your offer, you will be asked to indicate the undergraduate degree that you intend to

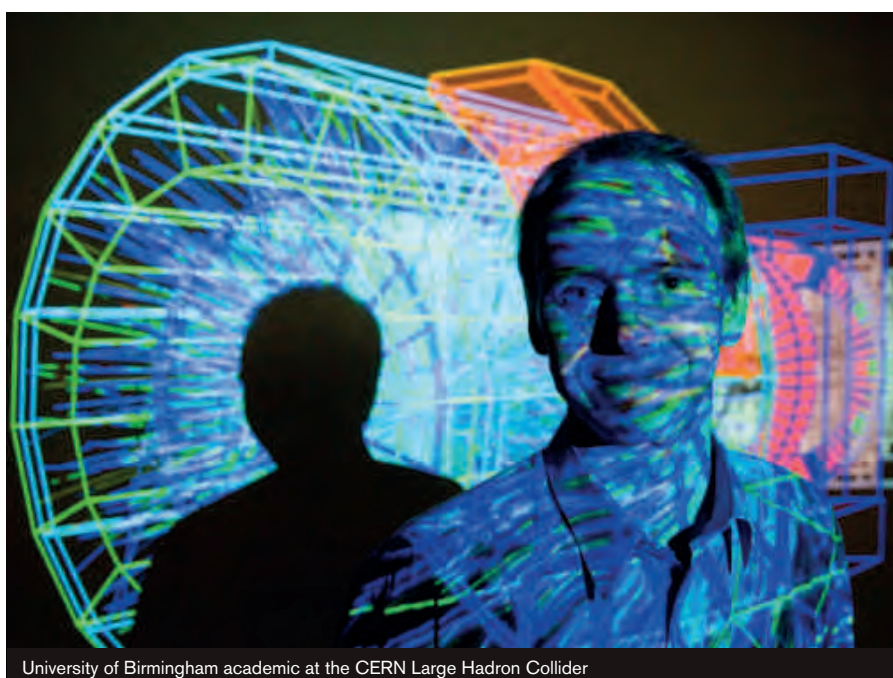
progress to, and to make your module choices for the Foundation Academy programme.

You will not be tied to your choice of undergraduate degree; however, it is important that you make the right module choices. This is because some undergraduate programmes will have compulsory modules that you should take in your Foundation Academy programme and you will be required to achieve a specified grade in order to progress to that course. These are listed online at: www.birmingham.ac.uk/foundation-academy/progression

Please note: in certain circumstances it is possible to change your Birmingham Foundation Academy pathway, although you would need to discuss this with your tutor.

Pathways consist of 120 credits in 10- or 20-credit modules. Your pathway will consist of an 80-credit suite of subject-specific modules, taught in our colleges by Birmingham academics, together with 40 credits of English language and study skills, modules delivered by the University's English for International Students Unit.

The Birmingham Foundation Academy pathways and pathway modules are described in the following pages so you will be able to decide which pathway is best for you. The modules listed may be shared by the different pathways, so you will be studying alongside students from other disciplines. This will give you the opportunity to share your ideas and increase your knowledge in different areas of study and form academic networks outside your main discipline.



University of Birmingham academic at the CERN Large Hadron Collider



Detail of souvenir programme of the opening of the University in 1909



Arts and Law Pathway

The College of Arts and Law

THE COLLEGE OF ARTS AND LAW HAS OVER 5,000 STUDENTS FROM THE UK AND ACROSS THE WORLD. IT IS A VIBRANT, INTERNATIONAL COMMUNITY WITH EXCELLENT FACILITIES, A SUPPORTIVE LEARNING ENVIRONMENT, INTERNATIONALLY RECOGNISED TEACHING AND RESEARCH, AND EXCITING INITIATIVES IN NEW FIELDS OF STUDY.



The College is at the forefront of research and innovation and from September 2012 the multi-million pound Bramall Music Hall will open its doors. The state-of-the-art music facility will provide a 450-seat auditorium for music, opera, drama and prestigious lecture and rehearsal space, practice rooms and recording resources.

The College's access to cutting-edge geotechnical imaging equipment assisted in the discovery of evidence of two previously unknown pits positioned on celestial alignment at Stonehenge. The project highlights the advances in technology that our students have access to.

The Department of Modern Languages has a strong tradition of research and interdisciplinary study and offers a breadth of language tuition from French to Mandarin. You can pursue your studies across a range of cultural, literary, historical and socio-political perspectives.

All our programmes develop skills, competence and knowledge that will stand you in good stead in your future career. Our students learn to research, analyse and prioritise large amounts of complex information efficiently. The college's graduates become enquiry-based learners that develop self-management skills that employers look for. Our graduates progress into careers in human resources, publishing and business, amongst others. We can also count amongst our past students a novelist, journalist, and chairs of statutory commissions.

Learn more about the College of Arts and Law at:

www.birmingham.ac.uk/artslaw

Compulsory modules	Credits
English and Study Skills for Academic Purposes (Term 1)	20
English and Study Skills for Specific Academic Purposes (Term 2)	20

Optional modules	Credits
The European Heritage	20
The Country and the City	20
Colonial Encounters	20
Digital Humanities	20

You may also take 20 credits from modules offered by other pathways, subject to availability and timetabling.

You must take modules totalling 120 credits over the academic year.



The Danford Collection of West African Arts and Artefacts

Fact

The University owns The Mingana Collection of Middle Eastern Manuscripts; the largest collection of illuminated Middle Eastern manuscripts after the Vatican and the Bibliothèque nationale de France.

The Arts and Law Pathway will lead you towards an undergraduate degree in one of the following six schools:

- Archaeology and Antiquity (Institute of)
- Birmingham Law School
- English, Drama and American & Canadian Studies
- History and Cultures
- Languages, Cultures, Art History and Music
- Philosophy, Theology and Religion

Module descriptions

English and Study Skills for Academic Purposes and English and Study Skills for Specific Academic Purposes modules are detailed on page 24.

The European Heritage

In this module you will learn about the history of the classical and Christian traditions that underlie European civilisation, as well as some of the most significant artistic and literary works that these traditions have inspired. You will examine the development of European society, culture and its philosophical and religious underpinnings in the Classical, Renaissance and Modern eras, focusing on key ideas and artefacts as examples.



The Shakespeare Institute library contains around 60,000 volumes, archives and manuscripts



Archaeology site

The Country and the City

In this module you will be learning about industrialisation, the rise of the modern city, and its subsequent interaction with a rural – or environmental – discourse. You will engage with such topics as industrialisation, with particular emphasis on the city of Birmingham, the representation of provincial and metropolitan life in French and English literature, the development of a pastoral movement in the late 19th century, and the practice of contemporary environmental law.

Colonial Encounters

Here you will be looking at the overseas expansion of European powers and the legacies of imperialism. Initial sessions will establish a chronological and thematic outline, exploring the roles of slavery and anti-slavery in the establishment of empire, governance and violence in the maintenance of empire, and the role of anti-colonial nationalism in ending imperial rule. Later, you will encounter key concepts in the study of colonial encounter and its cultural legacies. You will explore orientalism, postcolonialism and hybridity through sessions

on the representation of colonised peoples in metropolitan cultures (exhibitions, literature, ethnography and film), postcolonial challenges to these ways of knowing 'the other', and the place of English as a global language.

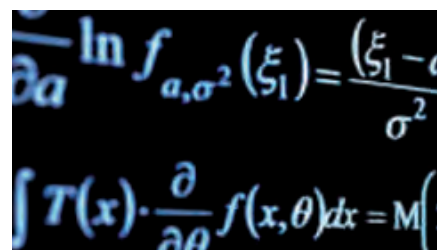
Digital Humanities

In this module you study the use of computers and other modern technologies in the production and analysis of texts, music and historical and archaeological reconstructions, as well as the digital impact on wider concepts of 'heritage'. You will learn about current research at Birmingham in this area in a weekly lecture, and discuss theoretical issues and concepts in the seminar; then in a practical workshop/lab session you will be part of a group working on projects such as producing a virtual gallery or edition. After completion of the module, you will know about the relevance of digital technology for the humanities, will have an idea of the state of cutting-edge research, and will be able to do practical work through an understanding of file formats for text, images, and sound, mark-up languages (XML) and basic web technology.

Engineering and Physical Sciences Pathway

The College of Engineering and Physical Sciences

THE COLLEGE OF ENGINEERING AND PHYSICAL SCIENCES HAS A LONG AND PROUD TRADITION OF EDUCATING STUDENTS FROM ACROSS THE GLOBE. WE WELCOME SCHOLARS FROM OVER 200 COUNTRIES WHO CONTRIBUTE TO THE STRONG INTERNATIONAL ATMOSPHERE THAT IS A MAJOR FEATURE OF THE COLLEGE.



You will study at the leading-edge of modern science and engineering. The College covers a broad range of world-leading research, from developing microengines to our particle physics research at CERN.

STEM (Science, Technology, Engineering and Mathematics) subjects are critically important in the development of our future fuels, materials and machines, and the College plays a significant role in training the next generation of world-class engineers and scientists to solve our future challenges. We have strong links with major UK employers such as Rolls-Royce and Airbus, and our staff and students are at the forefront of research into a wide variety of areas, from working with particle physicists at the Large Hadron Collider in Switzerland to using nanotechnology to develop microengines.

Learn more about the College of Engineering and Physical Sciences at: www.birmingham.ac.uk/eps

The Engineering and Physical Sciences Pathway will lead you towards an undergraduate degree in one of the following nine schools:

Engineering:

- Chemical Engineering
- Civil Engineering
- Electronic, Electrical and Computer Engineering
- Mechanical Engineering
- Metallurgy and Materials Engineering

Science:

- Chemistry
- Computer Science
- Mathematics
- Physics and Astronomy

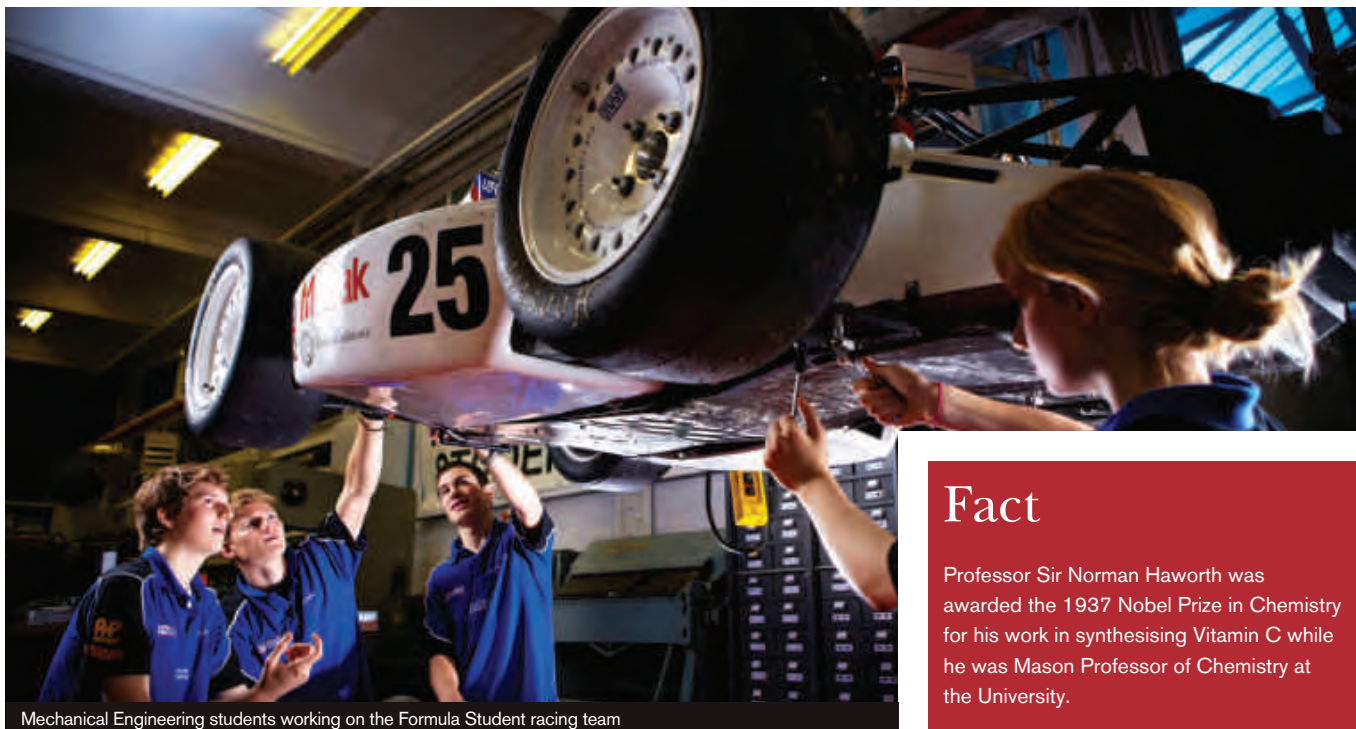
Compulsory modules*	Credits
English and Study Skills for Academic Purposes (Term 1)	20
English and Study Skills for Specific Academic Purposes (Term 2)	20
Introductory Mathematics	10

Optional modules	Credits
Properties of Matter	10
Mechanics and Waves	20
Further Mathematics	20
Foundation Electronic and Electrical Engineering	20
Introductory Chemistry	10
The Periodic Table	10
Introductory Organic Chemistry	10
Organic Spectroscopy	10
Physical Chemistry	20
Practical Chemistry (Laboratory)	10
Introductory Computer Science	20

* You must take modules totalling 120 credits over the academic year. In certain circumstances you may choose 20 credits from other science pathways, subject to availability and timetabling.



The Computer Science building



Mechanical Engineering students working on the Formula Student racing team

Fact

Professor Sir Norman Haworth was awarded the 1937 Nobel Prize in Chemistry for his work in synthesising Vitamin C while he was Mason Professor of Chemistry at the University.

Module descriptions

English and Study Skills for Academic Purposes and English and Study Skills for Specific Academic Purposes modules are detailed on page 24.

Introductory Mathematics

This module is aimed at developing your confidence and knowledge in basic mathematical techniques and skills. Topics you will study include: indices and logarithms; basic algebra; elementary geometry; trigonometry functions; vectors; and an introduction to differentiation and integration.

Properties of Matter

In this module you will be introduced to some of the basic structures of matter and how these structures affect material properties and their behaviour and uses in science and engineering. Topics you will study include: elements, compounds, mixtures; chemical and physical changes; basics of bonding; crystalline and amorphous solids; metals, ceramics and polymers; and physical properties such as thermal conductivity, electrical resistivity, magnetism and radioactivity.

Mechanics and Waves

The aim of this module is to develop a basic understanding of the principles of mechanics and the fundamental concepts of wave motion. The topics you will study include: laws of statics, kinematics and dynamics; properties of materials in tension and compression; gravitational fields; simple harmonic motion; wave equations; reflection and refraction; and diffraction and interference.

Further Mathematics

This module builds on the knowledge and skills developed in the Introductory Mathematics module (Term 1). It will cover topics associated with functions, further calculus and numerical methods.

Foundation Electronic and Electrical Engineering

This module aims to develop basic knowledge and skills relevant to electronics and magnetism. Topics you will study include: electric current and charge, resistors, capacitors, inductors, electric and magnetic fields, simple electronic circuits, and magnetic properties and behaviour of materials.

Introductory Chemistry

This module aims to develop a number of fundamental concepts associated with the discipline of Chemistry. Topics you will study include: electron configurations; basic ionic, covalent and co-ordinate bonding; relative formula mass and composition; stoichiometry (and balancing equations); moles, concentrations and Avogadro's number; and reacting quantities calculations.

The Periodic Table

This module covers important concepts such as periodicity and molecular shapes. It also expands and develops the basic bonding theories presented in the pre-requisite module (Introductory Chemistry) in more detail.

Introductory Organic Chemistry

This module aims to develop knowledge and skills in basic organic chemistry. Topics you

will study include: nomenclature, isomerism, arrow-pushing mechanisms, reactivity of sp , sp^2 and sp^3 carbon centres, and basic organic reaction schemes.

Organic Spectroscopy

This module is linked to the module Introductory Organic Chemistry. It aims to develop further some of the concepts presented in the introductory module, such as isomerism and arrow-pushing schemes. It also covers structure determination using spectroscopic techniques.

Physical Chemistry

This module aims to develop your knowledge and skills in the broad area of physical chemistry. Topics you will study include: gas laws, thermodynamics, chemical equilibrium and kinetics. It also includes coverage of acids and bases, solubility and electrochemistry. You will also practise some mathematical techniques within a chemical context.

Practical Chemistry (Laboratory)

This laboratory-based module is designed to provide you with experience of practical chemistry. The module seeks to develop your fundamental practical skills, as well as skills associated with maintaining a lab diary, report writing and interpretation of data. It also provides you with training in aspects of health and safety.

Introductory Computer Science

The module introduces issues relating to the representation, storage, exchange and manipulation of information. The module will introduce theoretical and practical aspects of computing. Students will be provided with an understanding of core features of computer science and develop a solid understanding of programming and its limitations.

Life and Environmental Sciences Pathway

The College of Life and Environmental Sciences

LIFE AND ENVIRONMENTAL SCIENCES IS DEDICATED TO EXPLORING AND LEARNING ABOUT THE DIVERSITY AND EVOLUTIONARY CHALLENGES OF LIFE IN ALL ITS FORMS. OUR GRADUATES WILL BENEFIT FROM INTERNATIONALLY RECOGNISED STRENGTH IN TEACHING AND RESEARCH, ALLOWING STUDENTS TO LEARN GENERIC AND DISCIPLINE-SPECIFIC SKILLS WHILE STUDYING EXCITING TOPICS.



The College of Life and Environmental Sciences consist of four schools: Biosciences; Geography, Earth and Environmental Sciences; Psychology; and Sport and Exercise Sciences. Each school offers a portfolio of academic learning, fieldwork and excellent facilities to ensure that our students gain valuable skills that provide access to a wide range of careers.

Our excellent reputation for research and teaching is recognised throughout all schools. In particular the School of Sport and Exercise Sciences achieved a first equal ranking in the most recent Research Assessment Exercise, and the School of Psychology is ranked in the top three Psychology departments in the UK.

You will have access to purpose-built facilities specifically equipped for work within your chosen field. The Lapworth Museum of Geology is recognised as one of the finest geological museums in the UK.

Graduates are equipped with a range of transferable skills, which can lead to exciting and varied career opportunities ranging from ecology through to cancer research and forensic psychology. We have strong links with major employers and in recent years graduates have gone on to work for GlaxoSmithKline and the British Heart Foundation, amongst others.

Learn more about the College of Life and Environmental Sciences at:
www.birmingham.ac.uk/les

Compulsory modules*	Credits
English and Study Skills for Academic Purposes (Term 1)	20
English and Study Skills for Specific Academic Purposes (Term 2)	20

Optional modules	Credits
Earth and Environmental Sciences	20
Biology	20
Human Biology	20
Advanced Study Skills in the Biological Sciences	20
Introductory Mathematics	10
Introductory Chemistry	10
The Periodic Table	10
Introductory Organic Chemistry	10
Organic Spectroscopy	10
Physical Chemistry	20

* You must take modules totalling 120 credits over the academic year. You may choose optional modules offered by other pathways, to make up the 120 credits subject to availability and timetabling.

The Life and Environmental Sciences Pathway will lead you towards a degree in one of the following four schools:

- Biosciences
- Geography, Earth and Environmental Sciences
- Psychology
- Sport and Exercise Sciences

Fact

Fred Shotton, former Lapworth Professor of Geology, mapped the geology of the beaches of northern France prior to the D-Day landings.



Infant and Child Laboratory (BabyLab)

Module descriptions

English and Study Skills for Academic Purposes and English and Study Skills for Specific Academic Purposes modules are detailed on page 24.

Earth and Environmental Sciences

This module will examine the interplay between geology and environments through time to show how they have shaped the world in which we live. You will study a broad range of topics that illustrate the interplay between geological processes such as volcanism, plate tectonics, sedimentation and the environment, including the co-evolution of life and planet Earth.

Biology

This module aims to develop your knowledge and skills in the areas of evolution, genetics, organismal and environmental biology. The focus of the module is on animal, plant and microbial biology but, where necessary, it draws comparisons and makes reference to human biology.

Human Biology

This module will examine the biological mechanisms that underpin the workings of the human body and mind. You will study a broad range of topics, from fundamental cell biology and biochemistry to the function and regulation of tissues and the biological bases of behaviour.

Advanced Study Skills in the Biological Sciences

This module will build upon the initial English and Study Skills for Academic Purposes module to introduce you to the specialist study skills specific to the biological sciences. The focus of this module will be data analysis, interpretation, critical thinking and presentation skills (verbal

and written in various formats). Much of your learning will be via student-selected topics that allow you to explore your own interests within the broad field of biology, working in groups and individually.

Introductory Mathematics

This module is aimed at developing your confidence and knowledge in basic mathematical techniques and skills. Topics you will study include: indices and logarithms; basic algebra; elementary geometry; trigonometry functions; vectors; and an introduction to differentiation and integration.

Introductory Chemistry

This module aims to develop a number of fundamental concepts associated with the discipline of Chemistry. Topics you will study include: electron configurations; basic ionic, covalent and co-ordinate bonding; relative formula mass and composition; stoichiometry (and balancing equations); moles, concentrations and Avogadro's number; and reacting quantities calculations.

The Periodic Table

This module covers important concepts such as periodicity (eg, elemental reactivity and property trends) and molecular shapes (eg, VSEPR theory). It also expands and develops the basic bonding theories presented in the pre-requisite module (Introductory Chemistry) in more detail.

Introductory Organic Chemistry

This module aims to develop knowledge and skills in basic organic chemistry. Topics you will study include: nomenclature, isomerism, arrow-pushing mechanisms, reactivity of sp, sp² and sp³ carbon centres, and basic organic reaction schemes.



Organic Spectroscopy

This module is linked to the pre-requisite module Introductory Organic Chemistry. It aims to develop further some of the concepts presented in the introductory module, such as isomerism and arrow-pushing schemes. It also covers structure determination using spectroscopic techniques (IR spectroscopy, mass spectrometry and ¹H NMR and ¹³C NMR spectroscopy).

Physical Chemistry

This module aims to develop your knowledge and skills in the broad area of physical chemistry. Topics you will study include: gas laws, thermodynamics, chemical equilibrium and kinetics. The module also includes coverage of acids and bases, solubility and electrochemistry. You will also practise some mathematical techniques (eg, differentiation and integration) within a chemical context.

Medical Sciences Pathway

The College of Medical and Dental Sciences

THE MEDICAL SCIENCES PATHWAY FOCUSES ON THE SCIENTIFIC BASIS OF MEDICINE, AND AIMS TO TRAIN THE MEDICAL RESEARCHERS OF TOMORROW. AS SUCH, THE PROGRAMME PLACES A HIGH VALUE ON UNDERSTANDING THE FUNDAMENTAL BASIS OF HUMAN BIOLOGY AND BEHAVIOUR BUT HAS A STRONG EMPHASIS ON ACADEMIC STUDY SKILLS.



The pathway is flexible, as it will prepare you for undergraduate study in a range of degrees in the Biological Sciences, Human Biology, Psychology, Sport and Exercise Sciences, Biochemistry and in particular Medical Science. These provide an excellent foundation for career development, with many of our graduates going on to use their skills in employment (eg, in the pharmaceutical or biotech industries). In addition, a large proportion of our students go on to further study, either in medical research by studying at PhD or Masters level, or in the clinical professions (ie, medicine or dentistry).

Learn more about the College of Medical and Dental Sciences at:

www.birmingham.ac.uk/mds

The Medical Sciences Pathway will lead you towards a degree in the following schools:

- Medical Science
- Biosciences
- Psychology
- Sport and Exercise Science

Please note: This pathway does not lead to the BSc Physiotherapy, Medicine and Surgery MBChB or the Dental Surgery BDS.



Student lounge

Compulsory modules	Credits
English and Study Skills for Academic Purposes (Term 1)	20
English and Study Skills for Specific Academic Purposes (Term 2)	20
Human Biology	20
Advanced Study Skills in the Biological Sciences	20
Introductory Chemistry The Periodic Table	2 x 10 (linked modules)

Optional modules	Credits
Introductory Organic Chemistry (Recommended)	10
Introductory Mathematics (Recommended)	10
Further Mathematics	20
Physical Chemistry I and II	20
Biology	20

You must take modules totalling 120 credits over the academic year. In certain circumstances, you may choose 20 credits of optional modules from other science pathways, subject to availability and timetabling.





Module descriptions

English and Study Skills for Academic Purposes and English and Study Skills for Specific Academic Purposes modules are detailed on page 24.

Human Biology

This module will examine the biological mechanisms that underpin the workings of the human body and mind. You will study a broad range of topics, from fundamental cell biology and biochemistry to the function and regulation of tissues and the biological bases of behaviour.

Advanced Study Skills in the Biological Sciences

This module will build upon the initial English and Study Skills for Academic Purposes module to introduce you to the specialist study skills specific to the biological sciences. The focus of this module will be data analysis, interpretation, critical thinking and presentation skills (verbal and written in various formats). Much of your learning will be via student-selected topics that allow you to explore your own interests within the broad field of biology, working in groups and individually.

Biology

This module aims to develop your knowledge and skills in the areas of evolution, genetics, organismal and environmental biology. The focus of the module is on animal, plant and microbial

biology but, where necessary, it draws comparisons and makes reference to human biology.

Introductory Mathematics

This module is aimed at developing your confidence and knowledge in basic mathematical techniques and skills. Topics you will study include: indices and logarithms; basic algebra; elementary geometry; trigonometry functions; vectors; and an introduction to differentiation and integration.

Further Mathematics

This module builds on the knowledge and skills developed in the Introductory Mathematics module (Term 1). It will cover topics associated with functions (eg, quadratics and polynomials), further calculus (eg, differentiation, integration, differential equations) and numerical methods.

Introductory Chemistry

This module aims to develop a number of fundamental concepts associated with the discipline of Chemistry. Topics you will study include: electron configurations; basic ionic, covalent and coordinate bonding; relative formula mass and composition; stoichiometry (and balancing equations); moles, concentrations and Avogadro's number; and reacting quantities calculations.

Fact

Sir John Vane, who was awarded the 1982 Nobel Prize in Physiology or Medicine for his research around aspirin and prostaglandin biosynthesis, completed his undergraduate studies at the University.



The Periodic Table

This module covers important concepts such as periodicity (eg, elemental reactivity and property trends) and molecular shapes (eg, VSEPR theory). It also expands and develops the basic bonding theories presented in the pre-requisite module (Introductory Chemistry) in more detail.

Introductory Organic Chemistry

This module aims to develop knowledge and skills in basic organic chemistry. Topics you will study include: nomenclature, isomerism, arrow-pushing mechanisms, reactivity of sp, sp² and sp³ carbon centres, and basic organic reaction schemes.

Organic Spectroscopy

This module is linked to the pre-requisite module Introductory Organic Chemistry. It aims to develop further some of the concepts presented in the introductory module, such as isomerism and arrow-pushing schemes. It also covers structure determination using spectroscopic techniques (IR spectroscopy, mass spectrometry and ¹H NMR and ¹³C NMR spectroscopy).

Social Sciences Pathway

SOCIAL SCIENCE IS THE FIELD OF STUDY CONCERNED WITH THE SOCIAL WORLD. AS SUCH, IT BRINGS TOGETHER A DIVERSE RANGE OF DISCIPLINES INCLUDING ECONOMICS, BUSINESS MANAGEMENT, GOVERNMENT, POLITICS, INTERNATIONAL RELATIONS, SOCIOLOGY, EDUCATION, SOCIAL WORK AND SOCIAL POLICY.



Generating new knowledge about society and transforming this in ways that improve wellbeing, is central to all work in the College of Social Sciences. It employs over 400 academics (including almost 100 professors) and has over 9,000 students from across the world.

The School of Government and Society is one of the leading UK and international centres for governance, politics, international development, sociology, public management, Russian and European studies.

Birmingham Business School is a dynamic and internationally focused school offering programmes across the full range of business school disciplines. The School's academic staff conduct world-class research, in addition to achieving excellence in teaching and enriching students' understanding. We pride ourselves on students graduating with a range of knowledge and skills that give them a competitive edge.

Birmingham Business School has developed and continues to maintain strong links with professional accountancy firms and organisations such as Deloitte and KPMG. It is accredited by EQUIS and many of the degree programmes have individual professional accreditation (for example AMBA, CIPD, ICASA and CIPS).

Learn more about the College of Social Sciences at: www.birmingham.ac.uk/socsci

The Social Sciences Pathway will lead you towards a degree in one of the following four schools:

- Birmingham Business School
- Education
- Government and Society
- Social Policy

Compulsory modules	Credits
English and Study Skills for Academic Purposes (Term 1)	20
English and Study Skills for Specific Academic Purposes (Term 2)	20

Optional modules	Credits
Politics, Policy and Protest	20
Social Policy, Welfare and Society	20
How to Learn, Earn and Be Happy: An Introduction to Education	20
Business and the Market	20
Quantitative Methods for Business and Economics	20

You must take modules totalling 120 credits over the academic year. You may choose up to 40 credits from other pathway optional modules, subject to availability and timetabling.





The Birmingham Business School

Module descriptions

English and Study Skills for Academic Purposes and English and Study Skills for Specific Academic Purposes modules are detailed on page 24.

Politics, Policy and Protest

When studying Politics we are concerned, above all, with how power is obtained and how it is then used. In representative democracies power resides in elected office, and the main concern is how representative institutions function and how they can be held accountable. However, many countries are not democratic and so as well as looking at democratic practices, the module will also consider authoritarian political systems – countries where the military, a commanding political party or a personalist autocracy holds power. In particular, it will examine how these countries function and how they differ from established democracies.

Social Policy, Welfare and Society

This module explores the potential to create the societies in which we would want to live through the development and implementation of policies, which include health, social care, housing and

criminal justice. This highly contemporary and dynamic module analyses current social issues and asks questions about the role and contribution of the individual, the family and the State in constructing societies for the future.

How to Learn, Earn and Be Happy: An Introduction to Education

Learning, and processes of formal and informal education, are widely held to be crucial components of a successful and happy life. This module introduces you to theories of learning, teaching and assessment, explores their impact on life chances in different areas of the world and reviews philosophical and empirical research on the relationship between education and happiness.

Business and the Market

This module focuses on the relationship between firms and markets. It looks at how markets work, how they differ and why these differences matter to the firm. It begins by introducing you to some underlying ideas that will help you think about the subject, before moving on to describe the operations of the market itself. After learning about the laws of supply and demand, you will

Fact

- The University of Birmingham has the longest established business school in the country, founded in 1902 as the Faculty of Commerce
- *The Economist* ranks the Birmingham MBA within the top ten offered by UK business schools

also study the different types of market and how firms set about maximising their profits under different competitive conditions.

Quantitative Methods for Business and Economics

While this module has a mathematical foundation, it is not simply about developing your mathematical skills. Rather, the purpose of the module is to show you how you can use these skills to improve your understanding of business problems and to help you make business decisions more effectively.



English language and study skills

WITHIN YOUR PROGRAMME YOU WILL TAKE TWO 20-CREDIT MODULES IN ENGLISH LANGUAGE AND STUDY SKILLS. THESE MODULES WILL LARGELY BE TAUGHT AT THE FOUNDATION ACADEMY HUB AND ENGLISH LANGUAGE CENTRE BASED IN PRIORSFIELD, A BEAUTIFUL HISTORIC MANOR HOUSE ON THE EDGBASTON CAMPUS.

This gives you a dedicated study, social and welfare centre within easy reach of your residence and all the amenities of the Edgbaston campus. You will be learning in a supportive environment in small classes that are focused on individual needs. One-to-one tutorials are also available if you need them.

Core modules

Most students will take English and Study Skills for Academic Purposes in Term 1 and English and Study Skills for Specific Academic Purposes in Term 2.

■ English and Study Skills for Academic Purposes

This module will equip you with the English required for academic study at undergraduate level. It will help you to acquire key academic vocabulary and to master key academic grammatical structures. The module will also help you to develop the necessary skills for reading academic texts and writing academic assignments. It will enable you to perform successfully across all modules of the Foundation Academy programme, as well as preparing you for study in your future undergraduate programme.

■ English and Study Skills for Specific Academic Purposes

This module will further develop your ability to cope in an academic environment. It will focus on the academic English used in specific areas of study such as Arts, Social Sciences, Engineering and Sciences. It will also prepare you for the specific academic writing demands of your future undergraduate programme.

Options for high-level English language speakers

If you can demonstrate that you have a high English language competency you can choose to replace the aforementioned modules with Aspects of Britain in Term 1 and Advanced Academic Skills in Term 2. This will be by prior agreement.

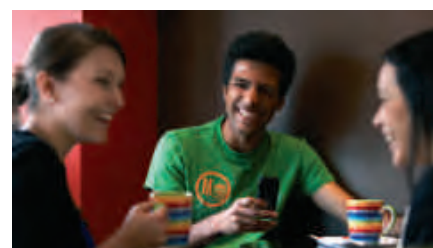
■ Aspects of Britain

This module will explore important aspects of British social, cultural and political life, helping you to read British newspapers and listen to the news with understanding. It will also give you enough understanding of British social and political life and culture to enable you to critically discuss various aspects of it, and relate this knowledge to similar aspects of life in your own country. In doing this, you will also improve your fluency and command of the English language.

■ Advanced Academic Skills

This module will prepare you for the academic demands of your future undergraduate programme, where you will be expected to employ an efficient and effective learning style. It will help you to identify weaknesses in your current learning style and enable you to develop better study and research skills. It will also help you to develop your critical thinking skills. In doing this, you will also improve your fluency and command of the English language.

To check whether you already meet the University's English language entry requirements for the undergraduate subject you are aiming to progress to, please go to www.birmingham.ac.uk/students/requirements/requirements-ug/international/index.aspx



Priorsfield

Entry requirements

Academic requirements

This is an ideal opportunity for you if:

- You are a student from a 12-year education system and your qualification is not accepted for direct entry to UK undergraduate degree programmes. You should have achieved or be predicted high grades in your Year 12 high school examinations.
- You have followed or intend to follow the IB or A level curriculum to IB Certificate or AS level (or equivalent) only. You should have achieved or be predicted high grades.
- You have followed or intend to follow the IB or A level curriculum to IB Diploma or A2 level (or equivalent) to a high standard, normally acceptable for direct entry to University of Birmingham undergraduate degree programmes, but you have not taken the correct pre-requisite subjects to a high enough level for entry to the specific undergraduate degree programme that you would like to apply for.

Please note: The Birmingham Foundation Academy is not appropriate for students who have followed the IB or A level curriculum to IB Diploma or A2 level but not achieved the grades normally acceptable for direct entry to University of Birmingham undergraduate degree programmes.

You can find the entry requirements specific to your qualification online at: www.birmingham.ac.uk/foundation-academy/requirements
English language entry requirements apply. See table below.

Your offer

Providing you meet the academic entry requirements and depending on your English language competence you will be made an offer for either:

- Bachelor's Degree with Integrated Foundation Year (four-year programme).
- Birmingham Foundation Academy Programme (one-year programme). Students who complete a one-year programme and meet the published progression criteria will be guaranteed a place on one of our three- or four-year degree programmes.

Please note: It is possible to progress to the University's four-year degree programmes, for example, the MEng (integrated Masters) or programmes with a year in industry or year abroad. In such cases Birmingham Foundation Academy students holding an offer for a four-year programme will be able to apply for an extension of their studies in their final year.



Pre-sessional English language tuition

If you require additional English language tuition, you will be able to apply for a specific Foundation Academy English programme that takes place before the start of your first term. This programme will be six or ten weeks in duration, depending upon your current English language level. Upon successful completion of the programme, you can transfer to the Foundation Academy without needing to take another English language test.

The pre-sessional English programme is not part of the Birmingham Foundation Academy Package, and will be at your own cost.

Full details, including the course dates and tuition fees, can be found online at: www.birmingham.ac.uk/students/courses/pre-sessional/index.aspx

English language entry requirements	IELTS	TOEFL IBT	Pearson Test of English
Bachelor's Degree with Integrated Foundation Year (four-year programme) Engineering and Physical Sciences Pathway Life and Environmental Sciences Pathway Medical Sciences Pathway Social Sciences Pathway	5.5 overall with at least 5.5 in each band	72 overall with at least Listening – 17 Reading – 18 Speaking – 20 Writing – 17	A minimum of Listening – 51 Reading – 51 Writing – 51 Speaking – 51
Bachelor's Degree with Integrated Foundation Year (four-year programme) Arts and Law Pathway	6.0 overall with at least 5.5 in each band	80 overall with at least Listening – 20 Reading – 19 Speaking – 21 Writing – 20	A minimum of Listening – 53 Reading – 53 Writing – 53 Speaking – 53
Birmingham Foundation Academy Programme (one-year programme) Engineering and Physical Sciences Pathway Life and Environmental Sciences Pathway Medical Sciences Pathway Social Sciences Pathway (one-year programme not available for Arts and Law Pathway)	5.5 overall with at least 5.0 in each band	68 overall with at least Listening – 15 Reading – 17 Speaking – 19 Writing – 17	A minimum of Listening – 45 Reading – 45 Writing – 45 Speaking – 45

Your accommodation

AS A FOUNDATION ACADEMY STUDENT **YOU WILL LIVE IN DEDICATED ACCOMMODATION** ON CAMPUS IN MASON, THE UNIVERSITY'S NEWEST RESIDENCE. PART OF THE POPULAR VALE VILLAGE, MASON IS A SHORT WALK FROM THE FOUNDATION ACADEMY HUB AND ENGLISH LANGUAGE CENTRE, AND YOUR ACADEMIC DEPARTMENTS ARE JUST A SHORT WALK FROM THERE.

This smart accommodation, which opened in 2008, consists of single-sex apartments with six bedrooms in each. All student bedrooms have en suite facilities and a shared kitchen/lounge dining area. The bedrooms are fully furnished and cabled to provide a free internet service which also enables you to view television over the network.

Other benefits of your accommodation include:

- Staff are available 24 hours a day throughout the year
- A dedicated Residents' Life Co-ordinator will live on site
- A bedding pack will be waiting for you when you arrive to include duvet, duvet cover, pillow, pillowcase and sheet
- Cooking utensils, crockery, cutlery, a kettle and a toaster are provided
- The accommodation is fully heated
- Basic contents insurance is included
- Adapted rooms are available for wheelchair users and for students with hearing and sight impairment

(Please contact us if you require specially adapted accommodation.)

The contract length is 42 weeks, which starts on 17 September 2012 and ends on 5 July 2013.

- We strongly recommend that you arrive on arrivals weekend from 15–16 September
- You will be allowed to check into your accommodation on arrivals weekend

To find out more about accommodation go to www.birmingham.ac.uk/foundation-academy/accommodation

Residents' Life Co-ordinator

Unique to Birmingham Foundation Academy, the Residents' Life Co-ordinator will live on site, as a first point of contact for Foundation Academy students. They will provide advice and guidance, help you to familiarise yourself with campus buildings, facilities and services, shopping areas, places of interest, and local transport networks, and will arrange suitable social gatherings.

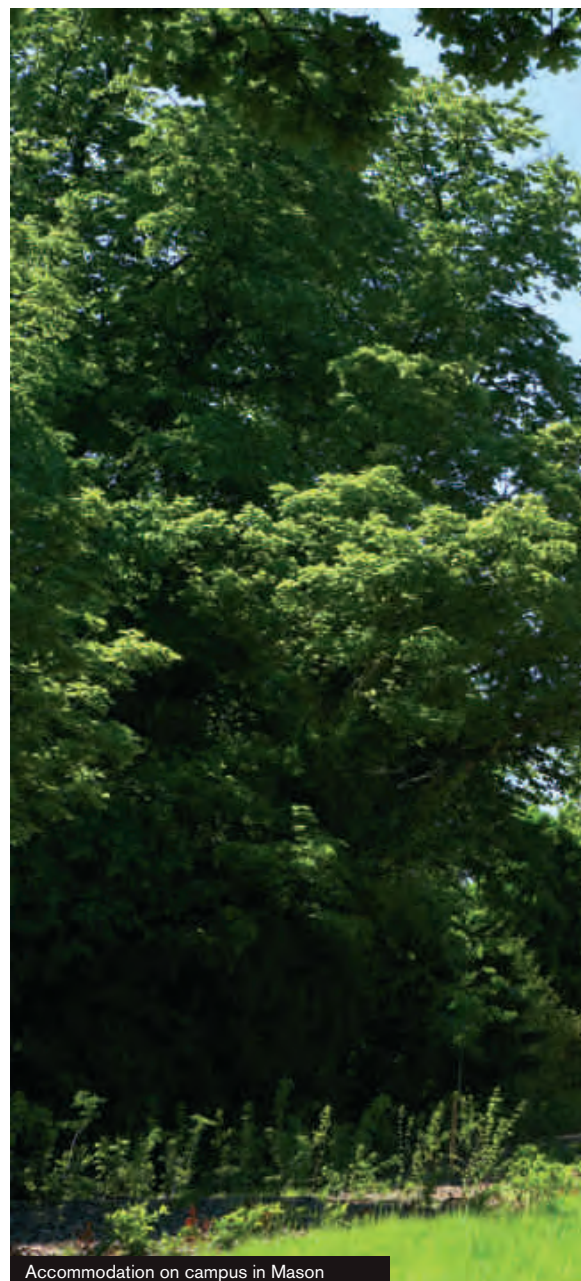
Your catered package

Your accommodation is provided with a catered package and most dietary requirements can be catered for. Food is provided during term times (17 September 2012–7 December 2012, 7 January 2013–22 March 2013 and 22 April–14 June 2013).

You can take your meals and snacks at any of the catering outlets, including Fusion, Rios and Pizza Shack at the Hub on the Vale, as well as 17 other cafés and snack bars across the campus.

Please note:

- Accommodation and catering is a compulsory part of your package, unless: a) a student under 18 can provide evidence that they will be living with a guardian who is local to the University; b) a student is bringing a family and suitable accommodation outside the University can be secured; or c) a medical reason is given that catering is not suitable for a student.



Accommodation on campus in Mason



Student's study bedroom in Mason



Shopping and catering facilities on campus

Student support

THERE IS A WIDE RANGE OF SUPPORT SERVICES AVAILABLE FOR YOU TO ENSURE YOUR STUDENT LIFE RUNS SMOOTHLY AND NOTHING STOPS YOU FROM MAKING THE MOST OF YOUR TIME HERE AND REACHING YOUR FULL POTENTIAL.

Arrival and welcome

As a Birmingham Foundation Academy student, you will be invited to attend the University's International Welcome and Registration, which is held just before the start of term.

You will be guided through the University Welcome, to ensure that you have the smoothest possible transition into University life. A Welcome Team of senior students will be on hand to answer any questions you may have and offer the benefit of their experiences. Welcome activities include a free airport collection service, suitable social activities, assistance with administrative formalities such as opening a bank account, registering with the University and registering with the police (where necessary).

Full details of the International Welcome and Registration will be sent to you once you have accepted your offer for the Foundation Academy.

Social programme

At Birmingham we recognise that the experience of studying in the UK is enhanced and enriched by the cultural experience of living in a new country and culture. We offer countless ways for you to pursue your hobbies and interests or become involved in a completely new social, sporting or cultural activity. Not only will you have the opportunity to gain new skills, you will improve your fluency in English and make friends with people from Birmingham, across the UK and around the world.

You will have full access to the social opportunities offered by the Guild of Students. In addition, the Residents' Life Co-ordinator will arrange suitable social events and you will have the opportunity to take day trips to places of interest throughout the UK, including Warwick Castle, London, Cambridge and Oxford.

Immigration advice

Our International Students Advisory Service (ISAS) advisers are happy to give immigration advice and services on behalf of the University and are regulated by the Office of the Immigration Services Commissioner (OISC).

Once you have been accepted on to the Foundation Academy Programme and have been issued with your Confirmation of Acceptance of Studies (CAS), ISAS will contact you to offer support with the visa application process (see page 30, Applying for your Student visa).

ISAS advisers can offer advice in the following general matters:

- Applying for Entry Clearance as a Student Visitor, Tier 4 Student or Student Dependant
- Applying for an extension of Leave to Remain as a Student or Student Dependant
- Applying to switch your visa from your previous sponsor to the University of Birmingham sponsorship
- Submitting applications for extension of Leave to Remain as a Student or Student Dependant
- Immigration implications of taking a leave of absence from your studies or changing course or mode of study
- Changing your immigration status
- Working during your studies and schemes for work after study
- Applying for Entry Clearance as a General Visitor for friends/relatives to visit or attend graduation ceremonies or visit you during your studies
- If you have a complicated, out of time (expired) or visa refusal in student categories (you should let us know immediately if you are having problems with your Entry Clearance application or it is refused)



You can go to the visa information pages on the ISAS website for further information and contact details for the ISAS advisers: www.as.bham.ac.uk/studentlife/international/visa/index.shtml

Students under the age of 18

- The University meets its statutory obligations for students under UK legislation and has a Safeguarding Children and Young People within the University policy. For full details please see www.birmingham.ac.uk/Documents/university/legal/children-policy.pdf

Support if you have a disability

We welcome applicants and students with disabilities and specific learning difficulties. Our Disability and Learning Support Service will liaise with the Foundation Academy and can arrange individual student consultations, advice and guidance on assistive technology, specialist tuition, equipment loans, and much more. Find out more at: www.as.bham.ac.uk/study/support/disability



Outside the Guild of Students

The Guild of Students

The Guild of Students is central to student life at Birmingham. The Guild exists to make sure that you get the best from your time here – this includes representing you on issues that matter, involving you in University life, and offering support and opportunities for fun. As a Birmingham Foundation Academy student you will automatically be a member of the Guild.

The Guild is a great place to meet your friends, with open access study lounges and a café bar. It also contains shops, including a travel agent, computer repair shop, a University souvenir shop and a grocery store. Other services offered by the Guild include:

- **The Advice and Representation Centre (the ARC)**
The ARC offers impartial advice on housing, immigration, finance and welfare.
- **Groups and societies**
Joining a student group is a great way to make friends and enjoy your life outside your study – the Guild hosts over 200 groups and societies for you to choose from.

Volunteering

The Guild offers a wide range of volunteering opportunities that can enable you to meet new people and improve your employability skills.

Learn more about the Guild of Students:
www.guildofstudents.com

Please note: Students must provide evidence that they are 18 years and over to access the Guild of Students bar and nightclub.

Supporting your faith

St Francis Hall, the University chaplaincy, is a place where students of all faiths can meet for worship, seek advice or counselling from a chaplain, or obtain information on places of worship in the local area. Chaplains, who are ministers or religious representatives, are available every weekday during term time. There are over 20 full- and part-time chaplains from different faiths at the University. The chaplaincy is also home to a wide range of student-led faith-based groups and societies which organise their own events and social activities.



International students welcome team

Essential information

The Birmingham Foundation Academy Package

The cost of the Birmingham Foundation Academy Package for 2012–2013 is £20,300.

This includes:

- One year's tuition fees: £12,500
- Fully catered, en suite, single accommodation for one year: £7,000
- Books and all classroom equipment: £800

Please note: this is an all-inclusive package.

Payment methods

The University offers the flexibility of paying your tuition or accommodation fees in full at the start of the year or in instalments. You can see details of the payment options online at: www.birmingham.ac.uk/foundation-academy/fees

Please note:

- If you are in arrears with the payment of fees the University reserves its rights to take enforcement action for non-payment.

Applying for your student visa

Once you have satisfied any conditions of your offer, the University will issue you with an unconditional offer. Once you have accepted the unconditional offer, the University will issue a Confirmation of Acceptance of Studies for either a one-year or a four-year programme.

The Confirmation of Acceptance of Studies (CAS) proves that you have been accepted on to a full-time course, and will be required when you apply for your Tier 4 Student Visa to study in the UK. You can use your CAS number to apply for your student visa in the three months before of the start of the programme.

If you hold a conditional offer for the Foundation Academy because you need to improve your English language level and you apply for a pre-sessional English programme (see page 25), the University will issue a CAS for the duration of the pre-sessional English programme. Once you have successfully completed your pre-sessional English programme, you will be issued a new CAS for the one-year or four-year programme and you will be able to apply to extend your student visa.

Once you have been issued with your CAS, the University's International Students Advisory Service will contact you to offer support with the visa application process.

You can also check the requirements for entry to the UK with the British Council offices, British Embassy or British High Commission in your country or you can go to the UK Border Agency website www.ukba.homeoffice.gov.uk



How to apply

You can apply directly to Birmingham Foundation Academy at: www.birmingham.ac.uk/foundation-academy/apply. In addition to listing your academic qualifications or predicted grades, you will need to write a short personal statement explaining your motivations for applying to the Birmingham Foundation Academy. The online application form contains a box for you to enter your statement. Providing you meet the entry requirements, we expect to be able to make you an offer within three working days of receiving your completed application (working days are normally Monday to Friday). The last date for application for 2012 entry is 20 August 2012.

Key dates and contacts

Key dates

20 August 2012	Last date for applications for the Birmingham Foundation Academy
9 July 2012 to 14 September 2012	10-week preessional English programme
6 August 2012 to 14 September 2012	6-week preessional English programme
15–16 September 2012	Arrivals weekend and airport collection
From 17 September 2012	University Welcome and Registration
24 September to 7 December 2012	Autumn term dates
7 January to 22 March 2013	Spring term dates
22 April to 14 June 2013	Summer term dates

Contact us

If you have any questions, please contact us at:
foundation-academy@contacts.bham.ac.uk
 Tel: +44 (0)121 414 9292

Overseas representatives

The University has a network of overseas representatives who can provide further information on studying at Birmingham Foundation Academy. Many offer a visa counselling service. You can find contact details of your nearest representative at www.birmingham.ac.uk/international/students/country



Find out more

Please visit www.birmingham.ac.uk/foundation-academy

UNIVERSITY OF
BIRMINGHAM

Birmingham Foundation Academy
Edgbaston, Birmingham,
B15 2TT, United Kingdom
www.birmingham.ac.uk