

UNDERGRADUATE OPEN DAYS

JUN
27
FRI

JUN
28
SAT

09:00
16:00



Information line: 0121 414 3374

www.birmingham.ac.uk/opendays



Contents

Welcome	3
How to reach the University	4
An inspirational student experience	5
Open day registration	6
How to make the most of your day	7
Tours and activities	8
The city of Birmingham	11
General events timetable	13
What type of programme suits you?	15
Subject events timetable	16
Refreshments	30
Day planner	31
Edgbaston campus map	32–33

Birmingham VIP

Birmingham VIP is a regularly updated, personalised web page made available to all prospective undergraduate students. **Don't forget to login to find out all the latest news about life at the University.**



www.birmingham.ac.uk/vip

Follow us on Twitter

For updates on what is happening throughout the day and to share your views of the open day and University, follow us on Twitter:



@unibirmingham
#hellobrum

Tweet your photos

Want to give other students a taste of what it's like at Birmingham? Simply tweet or take an Instagram photo on campus using the **#hellobrum** hashtag, and your update will appear on our live open day stream on our virtual tour site, virtualtour.bham.ac.uk

Mobile app

Find your way around the open day by downloading our FREE open day application from the iPhone App Store, iTunes or Play store (search UoBopenday), or visit www.birmingham.ac.uk/contact/app-store.aspx

You can use the interactive app to:

- Find your way around campus using the interactive campus map
- Plan your programme of activities and sessions using your personalised scheduler
- Navigate to information and registration points on campus
- Access travel and parking information
- Link to social media pages

Available to download from Friday 30 May

Free Wi-Fi

Please log on to the open day wireless network using the password **uniofbham**



Welcome

Welcome to our glorious campus. We regularly attract over 15,000 visitors to our campus on open days and as you look around today it is easy to see why: our beautiful 250-acre estate offers you a safe, friendly environment with all the facilities of a small town, which is itself on the doorstep of one of the most vibrant cities in the UK. This open day will give you a taste of our university and provide you with all the information you need to make an informed choice about where to study. There are talks and displays as well as the opportunity to meet the students and staff who live and work here, and we hope you leave with a picture of the real Birmingham.

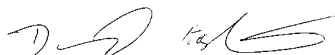
There is no better time to make the University of Birmingham your first choice; in October 2013 we were delighted to be named University of the Year 2013–14 by *The Times* and *The Sunday Times*. We were recognised in particular for our outstanding performance across all league tables and are now consistently ranked in the top 20 universities in the UK. While league tables alone do not give the whole picture, we believe that what lies behind our success is indicative of the educational experience you will receive here at a leading global university.

At Birmingham our academic standards are high. You will learn from world-class experts and be challenged throughout your studies with us and I hope you get a flavour of this today. We have a long tradition of innovation and our research continues to have impact across the world. You will be studying at the heart of a vibrant international academic community and will learn skills in critical enquiry, debate and self-motivation. We understand that this is likely to be different from the way you have studied in the past so rest assured that we will support you in making this transition to studying at a leading university. We have created and continue to invest in an academic environment that will help you succeed, from support from your tutors and lecturers to facilities for you to work whenever and however it suits you.

Preparation for your future career is likely to be at the forefront of your mind as you choose a university. We realise that your time at Birmingham is about more than your academic studies – it is about equipping yourself with the right skills to ensure that you succeed in a competitive employment market. From tailored careers guidance and global internship opportunities to an accredited personal skills programme and mentoring from our impressive alumni network, the wide range of options available to you will ensure that you are uniquely prepared for life after university.

I hope that you enjoy your visit today, gain a valuable insight into what it is like to study at a leading global university, and that today marks the start of your time with us.

With best wishes



Professor David Eastwood
Vice-Chancellor



FACT

- ❑ At almost 100m, the University clock tower, known to students as 'Old Joe', is the tallest freestanding clock tower in the world
- ❑ Birmingham is the only University in Britain to have its own railway station, aptly named 'University'
- ❑ The University's 250-acre campus was recently listed in the top ten most beautiful universities in Britain by *The Telegraph*



How to reach the University



We are pleased that you are planning to attend our open days this year. As part of our commitment to reducing our impact on the environment, we would strongly encourage you to travel by public transport when you visit the University.

Each year we welcome some 15,000 visitors to our open days; as a result, the adjacent roads and University car parks fill up very quickly. The University has only a limited number of car parking spaces on open days and we strongly recommend, where possible, for visitors to use public transport.

USEFUL LINKS

- Travel information, maps and directions: www.birmingham.ac.uk/directions
- National train information: www.nationalrail.co.uk

By rail

Being the only university in mainland UK with its own station, the easiest way to reach the University is by train. Most cross-country services to Birmingham arrive at Birmingham New Street station and up to six trains an hour depart for University on the cross-city line (final destination Longbridge or Redditch). The journey time usually takes less than ten minutes, while the centre of the main campus is a five-minute walk from University station. Student ambassadors (wearing lime green shirts) will be present at Birmingham New Street station to direct you. Your final destination for train tickets will be 'University (Birmingham)'.



By coach

There are frequent express coach services to Birmingham from London, Heathrow and Gatwick airports and many other UK cities. The long-distance coach station is in Digbeth in the city centre.

By bus

Numbers 61, 63 and X64 travel to the University's Edgbaston and Selly Oak campuses.

Parking on campus

Parking on open days is extremely limited and the majority of visitors will be unable to find a space on campus. We therefore recommend that visitors use public transport to reach the University or find alternative parking in and around the city. The University has three main car parks: North East, North and Pritchatts Car Park (£1 pay and display); however please

note that these are used by staff and students and fill up very quickly and therefore we cannot guarantee a space for visitors.

For further information about travelling to the University and the onsite train station please visit www.birmingham.ac.uk/opendays/travel

Park and ride

In addition to University parking there are two overspill park and ride car parks with some limited parking. They are based at King Edward's School playing fields (B29 7JX – the playing fields is a left turn if approaching from the city centre, just before the Eastern Road turn) on the Bristol Road, and at a site at the Selly Oak Hospital (B29 6JD) on Raddlebarn Road. Park and ride will be operating on a first-come, first-served basis. Shuttle buses to and from the University will be running throughout the day, dropping off and picking up from outside University Centre (building R23 on the map on the inside back page).

The first park and ride will leave King Edward's School playing field and the Selly Oak Hospital site at 8.30am. The last bus will leave University Centre at 4.30pm. There is no charge for the park and ride car park.

An inspirational student experience

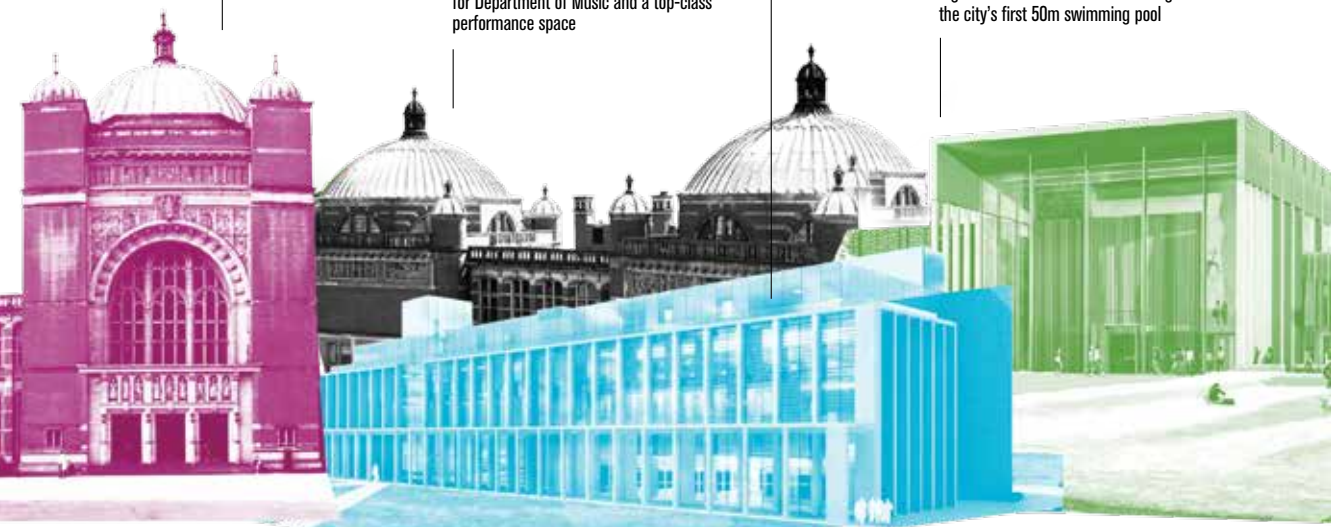
1 INVESTMENT IN THE STUDENT EXPERIENCE

Over the last three years we have invested £200 million in our campus

New Bramall Music Building – new home for Department of Music and a top-class performance space

We are investing £37 million in a new library for the main campus which will include a Cultural Gateway

The University has recently announced the single biggest investment of its type in new sporting facilities in higher education in the UK including the city's first 50m swimming pool



2 INVESTMENT IN OUR STUDENTS' CAREERS

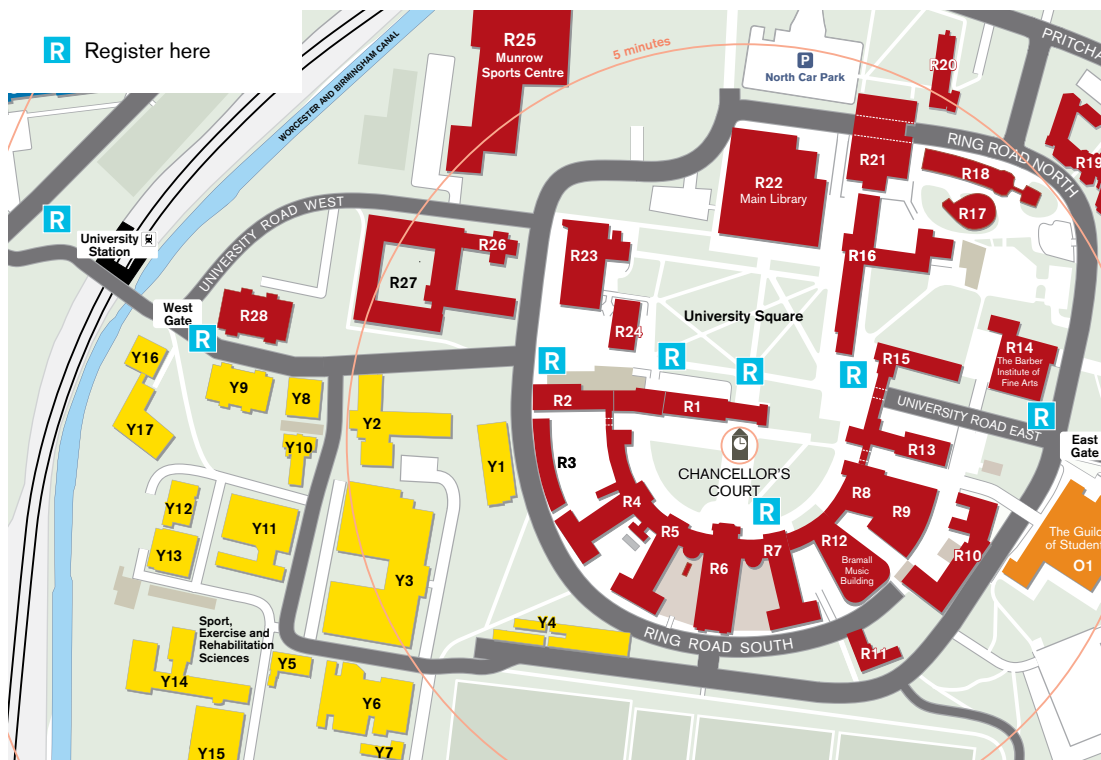
- The University recently invested £5 million into expanding our student employability
- In 2013, 867 internships were sourced by the UoB Internship Office
- We provide 8 bespoke fully-funded Global Challenge opportunities from Argentina to Australia
- Students benefited from 21 Alumni Mentors in 2012-13, including new CEO of Sainsbury's, Mike Coupe
- We host over 200 events, from industry-specific careers fairs to individual employer presentations

3 STUDENT FINANCIAL SUPPORT

- Our progressive and targeted financial aid package will offer support to over 4,000 students
- Our investment in widening access will increase to over £12 million by 2015/16
- We now offer Music Scholarships worth £3000 to undergraduate students
- Birmingham offers over 60 sports scholarships ranging from £1000 to £6000

In the days leading up to open day you will receive an email from us with your own personalised event ticket. The ticket will include a QR code which we will use to register your attendance on the day. Below is a step by step guide to registering on the day:

- 1 WHEN YOU RECEIVE YOUR EVENT TICKET VIA EMAIL, PLEASE **PRINT IT OFF**.
- 2 **BRING YOUR EVENT TICKET** TO THE UNIVERSITY OF BIRMINGHAM OPEN DAY.
- 3 WHEN YOU ARRIVE ON CAMPUS, **VISIT ONE OF OUR 8 REGISTRATION/ INFORMATION POINTS** (SEE CAMPUS MAP FOR LOCATIONS) AND **HAND IN** YOUR EVENT TICKET.
- 4 AS RECEIPT OF YOUR REGISTRATION ON THE DAY, YOU WILL **RECEIVE A** UNIVERSITY OF BIRMINGHAM BAG TO HELP YOU COLLECT INFORMATION/ LITERATURE THROUGHOUT THE DAY.
- 5 IF YOU NEED TO RUSH OFF TO YOUR FIRST TALK OR ACTIVITY WHEN YOU ARRIVE ON CAMPUS, DON'T WORRY, **YOU CAN REGISTER** YOUR ATTENDANCE WHEN YOU HAVE A SPARE FEW MINUTES.



How to make the most of your day

WHAT'S ON OFFER?

IN THE ASTON WEBB AND BRAMALL BUILDINGS YOU WILL FIND A WIDE RANGE OF SUBJECT-SPECIFIC STANDS AS WELL AS STANDS RELATING TO SPORT, WELFARE, ACCOMMODATION, FINANCE, CAREERS AND OTHER AREAS. VENUES TO VISIT ARE:

GREAT HALL, GROUND FLOOR,
ASTON WEBB BUILDING

R6

ROTUNDA, 1ST FLOOR,
BRAMALL MUSIC BUILDING

R12

THE DOME ROOM, 3RD FLOOR,
BRAMALL MUSIC BUILDING

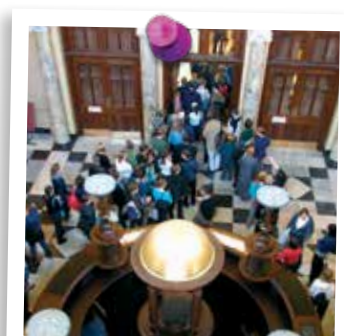
R12

Talks on a range of subjects take place throughout the day. The timetables for talks can be found from page 13 onwards. **Please note: all talks last approximately 30 minutes.**



On the day, staff at the main reception area in the Aston Webb Building (R6 on the map)

will be able to help you with general enquiries, directions and other information. Our student ambassadors will be wearing lime green shirts and will be present across the campus to help you find your way around and answer your questions about life and study at Birmingham.



Tours and activities

Campus tours

Guided walking tours of the main campus take place throughout the day, starting at 9.00am. They last between 45 minutes to an hour. The Campus Tour tent is situated in Chancellor's Court.

Accommodation tours

Throughout the day, visitors can view University accommodation. Visitors can either use the walking map to reach accommodation (this takes approximately 15 minutes) or there is a specially provided free bus service. Walking maps may be picked up from all information booths and at the base of the clock tower. Buses depart from outside the Barber Institute of Fine Arts (building R14 on the map) and drop visitors at Maple Bank Hall on the Vale Village. To get the bus back to campus there is a bus stop outside Mason Hall. In order to avoid congestion you might want to avoid the busiest periods between 12.00noon and 1.30pm. Buses will run from 9.00am until 3.15pm and bus tours will take between 45 minutes to an hour. More information on accommodation can be found at www.birmingham.ac.uk/accommodation

Library tours

To find out more about our library services, why not join a library tour? Tours depart every half hour from 9.00am to 3.00pm from the iLounge, Main Library (building R22 on the map). Self-guided tours are available from the library reception.



'Big Brum' open top bus sightseeing tour

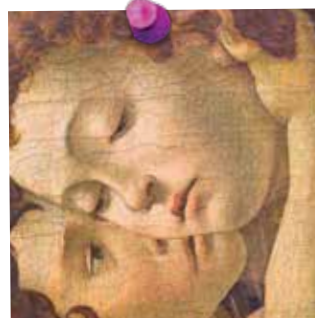
If you would like to find out more about the city and discover Birmingham for yourself, why not take part in our live, guided open top bus tour? Tickets are free and can be collected from the Aston Webb Reception (building R6 on the map) on a first-come first-served basis. The tours start at 2.30pm and 3.45pm and last for one hour. The bus will pick up visitors from outside the Barber Institute of Fine Arts (building R14 on the map).

The Barber Institute of Fine Arts

Major works by Manet, Monet and Magritte, Rubens, Rossetti, Renoir and Rodin, Gainsborough, Turner, Degas, Picasso and many others adorn the galleries of the award-winning Barber Institute of Fine Arts, the University's mini National Gallery. Highly recommended if you have 30 minutes or more available.

Alternatively, you can join our free guided tour of the galleries and its latest exhibitions and displays – 'Lasting Impressions: 20th-century Portrait Prints' (from the National Portrait Gallery, London) and 'Faith and Fortune: Visualising the Divine on Byzantine and Early Islamic Coins' – at 12.00noon. This tour will be given by the gallery's curatorial team and students. Meet at the Reception desk at the Barber Institute (building R14 on the map).

Opening hours
10.00am–5.00pm
11.00am–5.00pm (Saturday)
Admission is free
www.barber.org.uk



University of Birmingham Sport

As a top three sporting university there are plenty of sporting opportunities available at University of Birmingham Sport. Whether you want to get fit and healthy in the gym, enjoy group fitness classes or play for a University team there really is something for everyone – from elite performance to more recreational sport and general fitness. You will never have a better opportunity to get involved, have fun and make new friends. Find out more by visiting the Munrow Sports Centre (R25 on the map) – chat to current students, club members and coaches. You may also like to take a tour of our indoor and outdoor sport facilities. Looking to find out about sport scholarships, sport clubs, volunteering opportunities, membership and other sporting activities at Birmingham? Come along to our Sport at Birmingham talk, held in the Dance Studio at 9.45am, 11.15am, 12.45pm and 2.15pm.



The Guild of Students

The Guild, our students' union, is the hub of undergraduate life. Run by students for students, there are over 190 clubs and societies to join, reflecting the tastes and interests of our diverse community; societies range from mountaineering and debating to film and Brum Dine with Me. You can get involved in student radio via BURN FM, or the student newspaper *Redbrick* and there are diverse opportunities for volunteering in the local community. The Guild also provides the Job Zone and houses WorkLink employment service.

To find out more, attend a student life presentation followed by a tour of the Guild, which starts in the Debating Hall, 1st Floor, Guild of Students (building O1 on the map) at 11.15am, 12.00noon, 1.30pm and 2.15pm.

Learn more

www.guildofstudents.com or watch videos about student life at: www.youtube.com/unibirmingham

Investment in our students' careers

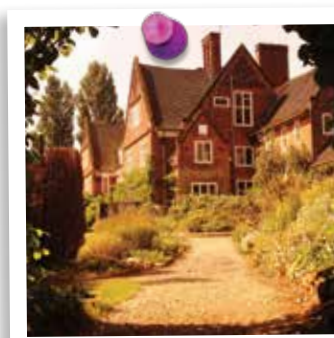
Our specialist staff offer careers guidance tailored to individual subject areas. We provide help to source and secure internships in the UK and overseas and our bursaries provide financial support to students undertaking work experience. Our mentoring schemes give students the chance to learn from some of the University's most successful alumni. To find out more about our sector leading employability services; why not attend the talk 'Time to make the most of your Birmingham degree: internships, work experience, bursaries, and graduate career success' at 11.15am in Lecture Theatre WG5, Ground Floor, Aston Webb Building (R4).

Places to relax for parents and teachers

If you are accompanying your son or daughter, or a school group on their open day visit, you may want to go your separate ways for a time. You're welcome to take a break and relax in Café Aroma, Staff House (building R24 on the map) between 9.00am and 3.00pm. If you're visiting our student accommodation, you may also want to enjoy a coffee in The Melt, located in Shackleton on the Vale Village.

Winterbourne House and Garden

This is a unique heritage attraction and the perfect place to escape the crowds on open day. This attraction will be open from 11.00am–5.30pm (last entry 4.30pm) and entry is free for prospective students and £1 for parents and guests.



Activities and talks for parents and teachers

Our student finance talks include information on the statutory support available from the government, the financial aid available from the University as well as other sources of funding. These talks take place at 10.30am, 12.00noon and 3.00pm. Please refer to the General Events Timetable on page 13 for locations. Parents may also be interested in attending our 'Parents' Survival Guide' talk at 1.30pm in WG5, Aston Webb Building, which covers all you need to know about supporting your son or daughter through their transition to university.

Teachers Forum

Our Teachers Forum aims to provide teachers with an update on recent changes in higher education. This will be held at 12.00noon in Lecture Theatre WG5, Ground Floor, Aston Webb Building (R4).

Access to Birmingham (A2B) scheme

If you are from a state school in the West Midlands and are a student, or supporting students with university applications, come to the Admissions stand in the Great Hall, Aston Webb Building (R6 on the map) to discover how the A2B scheme can help students from disadvantaged backgrounds make the transition to university life.

Learn more

www.birmingham.ac.uk/a2b

Visitors with disabilities

We encourage students with disabilities to visit and study at the University and have implemented a programme of accessibility adaptations on campus. This includes the installation of lifts and accessible toilets and improved signage. All new buildings and major conversions are being designed with accessibility in mind.

A mobility map is available from the Aston Webb Reception (building

Lost persons and property

Lost persons or anyone finding or looking for lost property should report to the Aston Webb Reception, Aston Webb Building (R6). Tel: 0121 414 4466 or contact a student ambassador.

First aid

First aid assistance can be found at the Aston Webb Reception, Aston Webb Building (R6). Tel: 0121 414 4466.

Emergencies and Security

To summon an ambulance and/or police dial 999 first and then inform Security Control on 0121 414 4444.

In the event of a fire contact Security Control on 0121 414 4444. To summon University Security Services for incidents not requiring the Emergency Services dial 0121 414 3000.

R6 on the map), which gives an overview of the Edgbaston campus showing the main access routes for wheelchair users. Blue badge holders should arrive at the East Gate where security personnel will direct you to the nearest disabled parking spaces. Prospective students with a disability are encouraged to visit the Disability and Learning Support Service desk in The Great Hall, Aston Webb Building (R6 on the map). For more information please visit our website at: www.birmingham.ac.uk/students/support/disability

The city of Birmingham

Birmingham has been transformed into a city for young professionals and is one of Europe's most exciting destinations. It is more than somewhere to study; it is somewhere to build a successful career.

Birmingham is a modern and fascinating city: famous for its historical industrial past, it is now a centre of arts and culture, commerce and entertainment, with a vibrant and diverse community. Birmingham is home to the largest financial services and creative sectors outside London. The thriving business community offers you a wealth of opportunities when you join the job market, and around 40% of Birmingham graduates choose to make their home here after leaving the University.

The city of Birmingham offers visitors a wealth of attractions from cultural activities to shopping and sporting events. It has some first-class entertainment and eating places, and you may want to consider arriving the night before to get the most out of your visit.

Shopping and Entertainment

Birmingham has every shop you would ever need, from famous brands to independent clothes, music and gift shops across the city; there are some real hidden gems. Birmingham also hosts some of the biggest concerts and sporting events in the country. With various large arenas, theatres and one of Europe's finest concert halls, there is always something new and exciting to go and see.



The iconic Selfridges building in the Bullring



Spirit of Enterprise Sculpture, Centenary Square



Victoria Square

Food and drink

The city has more Michelin-star restaurants than any other outside of London and was recently named Britain's 'foodiest town' by *The New York Times*. There are a multitude of bars and restaurants across the city, from the lively atmosphere of Broad Street, to the more laid-back feel of Brindleyplace along with a great view of the canal.



Birmingham Council House, Victoria Square



Aqueduct Sculpture, Brindleyplace



The Library of Birmingham



General events timetable

Talks last approximately 30 minutes.

Please note this programme is subject to change.

Activity	Description	Time(s)	Venue	Map
Accommodation (LIVING stand)	Display and information desk	All day	Great Hall, Ground Floor, Aston Webb Building	R6
Accommodation	Talks	9.45am 11.15am 12.45pm	Avon Lecture Theatre, Top Floor, University Centre	R23
Accommodation	Tours	9.00am–3.15pm (busiest periods between 12.00noon and 1.30pm)	Bus departs from outside the Barber Institute of Fine Arts	R14
Admissions	Display and information desk	All day	Great Hall, Ground Floor, Aston Webb Building	R6
Barber Institute of Fine Arts	Art gallery	11.00am–5.00pm	Barber Institute of Fine Arts	R14
Big Brum Bus Tour (Birmingham sightseeing)	Tickets from Aston Webb Reception (R6) on a first-come, first-served basis	2.30pm 3.45pm	Bus will pick up and drop off outside the Barber Institute of Fine Arts	R14
Campus tours	Guided walking tours of the main campus	All day	Chancellor's Court	
Careers Network	Display and information desk	All day	Great Hall, Ground Floor, Aston Webb Building	R6
Careers Network	Talk – Time to make the most of your Birmingham degree: internships, work experience, bursaries and graduate career success	11.15am	Lecture Theatre WG5, Ground Floor, Aston Webb Building	R4
Disability and Learning Support Service	Display and information desk	All day	Great Hall, Ground Floor, Aston Webb Building	R6
English for International Students	Literature available on the Study Abroad and Exchanges stand	All day	Great Hall, Ground Floor, Aston Webb Building	R6
Finance – Money Matters	Display and information desk	All day	Great Hall, Ground Floor, Aston Webb Building	R6
Finance – Money Matters	Talks – Money Matters Student Funding	10.30am 12.00noon 3.00pm	Lecture Theatre G33, Ground Floor, Education Building	R19
Gallery tour	Guided tour of Barber Institute art and coin collections	12.00noon	Foyer, Ground Floor, Barber Institute of Fine Arts	R14
Guild of Students	Display and information desk	All day	Great Hall, Ground Floor, Aston Webb Building	R6
International students	Talk – Opportunities for international students	11.15am	Lecture Theatre WG12, Ground Floor, Aston Webb Building	R4
Joint Honours (Arts disciplines)	Talks – Joint Honours in Arts Disciplines at Birmingham	11.15am 2.15pm	Vaughan Jeffreys Lecture Theatre, 1st Floor, Education Building	R19

Activity	Description	Time(s)	Venue	Map
Joint Honours (Arts disciplines)	Display and information desk – Admissions to Joint Honours in Arts disciplines	All day	The Dome Room, 3rd Floor, Bramall Music Building	R12
Languages for all	Talk – Language courses in the institution-wide language programme (modules outside the main discipline and extra-curricular)	1.30pm	Lecture Room 5, 2nd Floor, Arts Building	R16
Languages for all	Display and information desk	All day	Foyer, Ground Floor, Bramall Music Building	R12
Library Services	Display and Information desk (meet library staff and ask questions)	10.00am–3.00pm	iLounge, Ground Floor, Main Library	R22
Library Services	Tours	Every half hour 9.00am–3.00pm	Meet in the iLounge, Ground Floor, Main Library	R22
Library Services	Talk – We are not just books! A guide to supporting your academic success	9.45am	Lecture Theatre WG12, Ground Floor, Aston Webb Building	R4
Parents – support and guidance	Talk – Parents' Survival Guide	1.30pm	Lecture Theatre WG12, Ground Floor, Aston Webb Building	R4
Security	Display and information desk	All day	Great Hall, Ground Floor, Aston Webb Building	R6
Sport (University of Birmingham Sport)	Display and information desk	All day	Great Hall, Ground Floor, Aston Webb Building	R6
Sport (University of Birmingham Sport)	Display and information desk	All day	Munrow Sports Centre	R25
Sport (University of Birmingham Sport)	Meet our head coaches and team members of UBSport clubs	All day	Munrow Sports Centre	R25
Sport (University of Birmingham Sport)	Talks – Playing Sport at the University of Birmingham	9.45am 11.15am 12.45pm 2.15pm	Dance Studio, Lower Ground Floor, Munrow Sports Centre	R25
Student life	Talks – Student Life by Students followed by optional tour of the Guild	11.15am 12.00noon 1.30pm 2.15pm	Debating Hall, 1st Floor, Guild of Students	01
Study Abroad and Exchanges	Display and information desk	All day	Great Hall, Ground Floor, Aston Webb Building	R6
Study Abroad and Exchanges	Talks – Opportunities to study abroad as part of your Birmingham degree	12.45pm 2.15pm	Lecture Theatre 1, 3rd Floor, Law Building	R1
Tips for applicants	Talks	10.30am 12.00noon	Lecture Theatre G15, Ground Floor, Muirhead Tower	R21

Activity	Description	Time(s)	Venue	Map
Tips for applicants	Talk	1.30pm	Vaughan Jeffreys Lecture Theatre, 1st Floor, Education Building	R19
Tips for applicants	Talk	2.15pm	Lecture Theatre G33, Ground Floor, Education Building	R19
University Music Society	Display and information desk	All day	The Dome Room, 3rd Floor, Bramall Music Building	R12
Welcome and tips for your day	Talks	9.45am 10.30am	Concert Hall, Ground Floor, Barber Institute of Fine Arts	R14
Winterbourne House and Garden	Edwardian house and garden with tea room open for visitors	Friday 10.00am–5.30pm Saturday 11.00am–5.30pm (last entry 4.30pm)	Winterbourne House and Garden	G12
Year in Industry	Talk – What to expect from your Year in Industry	1.30pm	Lecture Theatre WG5, Ground Floor, Aston Webb Building	R4

What type of programme suits you?

Single Honours

This type of programme focuses on one subject only, such as LLB Law or BSc Physiotherapy. The subject events timetable lists the variety of subjects available.

Joint Honours

A Joint Honours degree allows you to study two subjects equally. This might be two subjects closely related to each other, such as History and Politics; or simply two which you enjoy equally, such as French and Mathematics.

Recommended talk

Joint Honours in Arts Disciplines at Birmingham, 11.15am and 2.15pm

Venue

Vaughan Jeffreys Lecture Theatre, 1st Floor, Education Building (R19)

Natural Sciences

In this course you combine two major subjects (with flexible weighting in years 2 and 3) from the following disciplines: Physics; Mathematics; Chemistry; Biology; Biochemistry; Psychology; Earth Sciences; Geography; and Sport and Exercise Sciences.

Liberal Arts and Sciences

Using the breadth of academic expertise from across the University, this degree allows you to design your own programme of study based on your interests and strengths. You will be supported in choosing modules which fit together into a logical programme of study reflecting your developing interests and knowledge.

You will choose a Major area of expertise selected from 40 subjects across the University, although you can keep your options open in choosing a Major until your final year.

Recommended talk

Studying Liberal Arts and Sciences at Birmingham, 1.30pm

Venue

Lecture Room 1, 1st Floor, Arts Building (R16)

Subject events timetable

Talks last approximately 30 minutes.

Please note this programme is subject to change.

	Arts and Law
	Engineering and Physical Sciences
	Medical and Dental Sciences
	Life and Environmental Sciences
	Social Sciences

A				
Subject	Description	Time(s)	Venue	Map
Accountancy (KPMG)	Display and information desk	All day	Great Hall, Ground Floor, Aston Webb Building	R6
Accounting and Finance	Display and information desk	All day	Great Hall, Ground Floor, Aston Webb Building	R6
Accounting and Finance	Display and information desk	All day	Atrium/Reception, Ground Floor, University House	03
Accounting and Finance	Talks – BSc Accounting and Finance degree at Birmingham Business School	9.45am 11.15am 12.45pm	Lecture Theatre G12, Ground Floor, University House	03
African Studies	Display and information desk – History and Cultures	All day	The Dome Room, 3rd Floor, Bramall Music Building	R12
African Studies	Talks – African Studies, Anthropology and Development at Birmingham	12.00noon 2.15pm	Danford Room, Room 224, 2nd Floor, Arts Building	R16
American and Canadian Studies	Display and information desk	All day	Rotunda, 1st Floor, Bramall Music Building	R12
American and Canadian Studies	Taster Lecture – What is American and Canadian Studies?	11.15am	Lecture Room 201, 2nd Floor, Arts Building	R16
American and Canadian Studies	Talk – American and Canadian Studies programmes overview	1.30pm	Lecture Room 201, 2nd Floor, Arts Building	R16
Ancient and Medieval History	Display and information desk – History and Cultures	All day	The Dome Room, 3rd Floor, Bramall Music Building	R12
Ancient and Medieval History	Talks – Ancient and Medieval History at Birmingham	12.00noon 1.30pm	Lecture Room 4, 1st Floor, Arts Building	R16
Ancient History	Display and information desk – Classics, Ancient History and Archaeology	All day	The Dome Room, 3rd Floor, Bramall Building	R12
Ancient History	Talk – Ancient History at Birmingham	11.15am	Lecture Room 1, 1st Floor, Arts Building	R16
Ancient History	Taster Sessions – Ancient Language	10.30am 1.30pm	CAHA Museum, 304/5, 3rd Floor, Arts Building	R16
Anthropology	Display and information desk – History and Cultures	All day	The Dome Room, 3rd Floor, Bramall Music Building	R12
Anthropology	Talks – African Studies, Anthropology and Development at Birmingham	12.00noon 2.15pm	Danford Room, Room 224, 2nd Floor, Arts Building	R16
Anthropology	Talk – Archaeology and Anthropology	3.00pm	CAHA Museum, 304/5, 3rd Floor, Arts Building	R16
Applied Golf Management Studies	Display and information desk	All day	Great Hall, Ground Floor, Aston Webb Building	R6
Applied Golf Management Studies	Display and information desk	All day	Atrium, Ground Floor, Sport, Exercise and Rehabilitation Sciences Building	Y14

A (continued)				
Subject	Description	Time(s)	Venue	Map
Applied Golf Management Studies	Talk – Applied Golf Management Studies	11.15am 2.15pm	Room G86, Ground Floor, Sport, Exercise and Rehabilitation Sciences Building	Y14
Archaeology	Display and information desk – Classics, Ancient History and Archaeology	All day	The Dome Room, 3rd Floor, Bramall Music Building	R12
Archaeology	Talk – Archaeology and Ancient History at Birmingham	12.00noon	Lecture Room 1, 1st Floor, Arts Building	R16
Archaeology	Talk – Archaeology and Anthropology	3.00pm	CAHA Museum, 304/5, 3rd Floor, Arts Building	R16
Arts	Talk – Joint Honours in Arts Disciplines at Birmingham	11.15am 2.15pm	Vaughan Jeffreys Lecture Theatre, 1st Floor, Education Building	R19
Arts	Display and information desk – Joint Honours (Arts Disciplines)	All day	The Dome Room, 3rd Floor, Bramall Music Building	R12
B				
Subject	Description	Time(s)	Venue	Map
Biomedical Materials Science	Display and information desk with admissions tutors	All day	Common Room, Ground Floor, Wolfson Centre for Medical Education, Medical School	B1
Biomedical Science (Medical Science)	Display and information desks with admissions tutors (BMedSc)	All day	Common Room, Ground Floor, Wolfson Centre for Medical Education, Medical School	B1
Biomedical Science (Medical Science)	Talk – Medical Science (BMedSc)	11.15am 12.45pm	Lecture Theatre 3, 1st Floor, Medical School	B1
Biosciences	Advice desks and displays for Biochemistry, Biological Sciences and Human Biology	All day	Great Hall, Ground Floor, Aston Webb Building and Biosciences Foyer	R6 R27
Biosciences	Lab tours and demos	10.00am– 3.00pm	Biosciences Foyer	R27
Biosciences	Talks – Overview of the undergraduate courses in Biosciences: Biochemistry, Biological Sciences and Human Biology	9.45am 12.00noon 2.15pm	Lecture Theatre E102, 1st Floor, Biosciences Building	R27
Biosciences	Talks – Careers in Biosciences	10.30am 1.30pm	Lecture Theatre E102, 1st Floor, Biosciences Building	R27
Biosciences	Talk – Taster lecture	11.15am 12.45pm	Lecture Theatre E102, 1st Floor, Biosciences Building	R27
Business Management	Display and information desk	All day	Great Hall, Ground Floor, Aston Webb Building	R6
Business Management	Display and information desk	All day	Atrium/Reception, Ground Floor, University House	03
Business Management	Talks – BSc Business Management degrees at Birmingham Business School	10.30am 12.00noon 1.30pm	Lecture Theatre G12, Ground Floor, University House NB: orange section of the campus map	03

C				
Subject	Description	Time(s)	Venue	Map
Chemical Engineering	Display and information desk	All day	Great Hall, Ground Floor, Aston Webb Building	R6
Chemical Engineering	Display and information desk	All day	Foyer, Ground Floor, Chemical Engineering Building	Y11
Chemical Engineering	Talks – Chemical Engineering: Engineering Products for the Consumer	11.15am 2.15pm	Room 124, 1st Floor, Chemical Engineering Building	Y11
Chemical Engineering	Tours of Chemical Engineering will take place after each talk	11.45am 2.45pm	Room 124, 1st Floor, Chemical Engineering Building	Y11
Chemistry	Displays and hands-on experiments	All day	209a (Seminar Room), 1st Floor, Haworth Building	Y2
Chemistry	Student-led tours of the department	All day	209, 1st Floor, Haworth Building	Y2
Chemistry	Displays and information desk	All day	216 (Reading Room), 1st Floor, Haworth Building	Y2
Chemistry	Display and information desk	All day	Great Hall, Ground Floor, Aston Webb Building	R6
Chemistry	Talks – Chemistry at Birmingham	10.30am 2.00pm	Lecture Theatre 101, Ground Floor, Haworth Building	Y2
Chemistry	Talks – My Student Experience: short talks by Chemistry students and alumni followed by an open question and answer session	11.00am 2.30pm	Lecture Theatre 101, Ground Floor, Haworth Building	Y2
Chemistry	Talk – Chemical Magic: an entertaining demonstration of Chemistry in action	11.45am	Lecture Theatre 101, Ground Floor, Haworth Building	Y2
Chemistry	Talk – Career Opportunities for Graduate Chemists	1.30pm	Lecture Theatre 101, Ground Floor, Haworth Building	Y2
Chinese	<i>See Modern Languages</i>			
Civil Engineering	Display and information desk	All day	Great Hall, Ground Floor, Aston Webb Building	R6
Civil Engineering	What is Civil Engineering?	All day	Shell Lounge, Ground Floor, Mechanical and Civil Engineering	Y3
Civil Engineering	Tour of the Birmingham Centre for Railway Research and Education	11.15am 1.15pm	Reception Area, Ground Floor, Gisbert Kapp Building	G8
Civil Engineering	Tours of buildings and labs	All day	Shell Lounge, Ground Floor, Mechanical and Civil Engineering	Y3
Civil Engineering	Talks – Constructing the Future	11.15am 12.45pm	Lecture Theatre G33, Ground Floor, Mechanical and Civil Engineering	Y3
Civil Engineering	Talks – New Railway degree programmes: Electrical and Railway Engineering and Civil and Railway Engineering	10.45am 12.45pm	Room NG16, Ground Floor, Gisbert Kapp Building	G8

C (continued)				
Subject	Description	Time(s)	Venue	Map
Civil Engineering	Alumni question and answer session – meet recent graduates and find out how our teaching and industrial contacts have helped students succeed after graduation	1.30pm	Lecture Theatre G33, Ground Floor, Civil and Mechanical Engineering	Y3
Classics	Display and information desk – Classics, Ancient History and Archaeology	All day	The Dome Room, 3rd Floor, Bramall Music Building	R12
Classics	Taster Session – Ancient Language	10.30am 1.30pm	CAHA Museum, 304/5, 3rd Floor, Arts Building	R16
Classics	Talk – Classics at Birmingham	12.45pm	Lecture Room 3, 1st Floor, Arts Building	R16
Computer Science	Display, information desk and robotics demonstrations	All day	Great Hall, Ground Floor, Aston Webb Building	R6
Computer Science	Displays, meet staff and current students, student-led tours of the department and robotics demonstrations	All day	Atrium, Ground Floor, Computer Science Building	Y9
Computer Science	Talks – Why Computer Science at Birmingham?	10.30am 1.30pm	Lecture Room G29, Ground Floor, Civil and Mechanical Engineering	Y3
Computer Science	Talk – Cutting Edge Computing	12.00noon	Lecture Room G29, Ground Floor, Civil and Mechanical Engineering	Y3
Computer Science	Talk – Artificial Intelligence	11.15am	Lecture Room G29, Ground Floor, Civil and Mechanical Engineering	Y3
Computer Science	Q&A with Computer Science admissions tutor	12.45pm	Lecture Room G29, Ground Floor, Civil and Mechanical Engineering	Y3
Computer Science	Q&A Session – meet recent graduates and find out how our teaching and industrial contacts have helped students succeed after graduation	2.00pm	Lecture Room G29, Ground Floor, Civil and Mechanical Engineering	Y3

D				
Subject	Description	Time(s)	Venue	Map
Dental Hygiene and Therapy	Display and information desk with admissions tutors	All day	Common Room, Ground Floor, Wolfson Centre for Medical Education, Medical School	B1
Dental Hygiene and Therapy	Talks – BSc Dental Hygiene and Therapy	11.15am 1.30pm	Lecture Theatre 4, Ground Floor, Medical School	B1
Dental Surgery (BDS)	Display and information desk with admissions tutors (BDS)	All day	Common Room, Ground Floor, Wolfson Centre for Medical Education, Medical School	B1

D (continued)				
Subject	Description	Time(s)	Venue	Map
Dental Surgery (BDS)	Talk – Dentistry at Birmingham (BDS)	10.30am	Leonard Deacon Lecture Theatre, 1st Floor, Medical School	B1
Dental Surgery (BDS)	Talk – Dentistry at Birmingham (BDS)	12.00noon 2.15pm	Lecture Theatre 4, Ground Floor, Medical School	B1
Drama and Theatre Arts	Display and information desk	All day	Rotunda, 1st Floor, Bramall Music Building	R12
Drama and Theatre Arts	Talks – Drama at Birmingham and an opportunity to see the facilities at Selly Oak Campus. Places are first-come, first-served. Bus departs 9.30am (back 11.00–11.15am); 11.15am (back 12.45–1.00pm); 1.30pm (back 3.00–3.15pm)	9.30am 11.15am 1.30pm	Bus departs promptly from outside the Education Building	R19

E				
Subject	Description	Time(s)	Venue	Map
Earth Sciences	<i>See Geology</i>			
Economic and Social History	Talks – History at Birmingham (includes History and Economic and Social History programmes)	9.45am 11.15am 12.45pm 2.15pm	Large Lecture Theatre (120), 1st Floor, Arts Building	R16
Economics	Display and information desk	All day	Great Hall, Ground Floor, Aston Webb Building	R6
Economics	Display and information desk	All day	Atrium Reception, Ground Floor, University House	Q3
Economics	Talks – Economics and related degrees	11.15am 1.30pm	Lecture Theatre G31, Ground Floor, Mechanical Engineering Building	Y3
Education	Display and information desk	All day	Great Hall, Ground Floor, Aston Webb Building	R6
Education	Display and information desk	All day	Foyer, Ground Floor, Education Building	R19
Education	Talks – Introduction to BA Education	11.15am 1.30pm	Lecture Theatre G33, Ground Floor, Education Building	R19
Electronic, Electrical and Computer Engineering	Display and information desk	All day	Great Hall, Ground Floor, Aston Webb Building	R6
Electronic, Electrical and Computer Engineering	Display and information desk	All day	Foyer, Ground Floor, Gisbert Kapp Building	G8
Electronic, Electrical and Computer Engineering	Talks – Degree programmes in Electronic, Electrical and Computer Engineering	10.45am 12.45pm	Room NG15, Ground Floor, Gisbert Kapp Building	G8
Electronic, Electrical and Computer Engineering	Talks – NEW Railway degree programmes: Electrical and Railway Engineering and Civil and Railway Engineering	10.45am 12.45pm	Room NG16, Ground Floor, Gisbert Kapp Building	G8
Electronic, Electrical and Computer Engineering	Tour of the Birmingham Centre for Railway Research and Education	11.15am	Reception Area, Ground Floor Gisbert Kapp Building	G8

E (continued)				
Subject	Description	Time(s)	Venue	Map
Electronic, Electrical and Computer Engineering	A range of Electronic, Electrical and Computer Engineering research demonstrations	11.15am 1.15pm	Reception Area, Ground Floor, Gisbert Kapp Building	G8
Electronic, Electrical and Computer Engineering	Alumni question and answer session – meet recent graduates and find out how our teaching and industrial contacts have helped students succeed after graduation	1.15pm	Room N523, 5th Floor, Gisbert Kapp Building	G8
Engineering	Engineering – Welcome	9.45am	Room G31, Ground Floor, Civil and Mechanical Engineering	Y3
English and English Language	Display and information desk	All day	Rotunda, 1st Floor, Bramall Music Building	R12
English	Talks – English Literature at Birmingham (Single Honours English, Joint Honours English Literature)	9.00am 10.30am 3.00pm	Large Lecture Theatre (120) 1st Floor, Arts Building	R16
English	Taster Lecture – English Literature	12.00noon	Large Lecture Theatre (120), 1st Floor, Arts Building	R16
English Language	Talk – English Language at Birmingham (Single and Joint Honours)	12.00noon	Vaughan Jeffreys Lecture Theatre, 1st Floor, Education Building	R19
English Language	Taster Lecture – English Language	9.45am 2.15pm	Lecture Room 3, 1st Floor, Arts Building	R16
English with Creative Writing	Talk – English with Creative Writing at Birmingham	1.30pm	Large Lecture Theatre (120), 1st Floor, Arts Building	R16
Environmental Science	Display and information desk	All day	Great Hall, Ground Floor, Aston Webb Building	R6
Environmental Science	Display and information desk	All day	Foyer, Ground Floor, Geography Building	R26
Environmental Science	Talk – Environmental Science at Birmingham	12.45pm	Lecture Theatre NG08, Ground Floor, Geography Building	R26
European Languages and Studies	<i>See Modern Languages</i>			
European Politics, Society and Economics	Talk – BSc European Politics, Society and Economics (EPSE)	1.30pm	Lecture Room G51, Ground Floor, European Research Institute	G3
European Politics, Society and Economics	Display and information desk (part of POLSIS advice desk)	All day	Great Hall, Ground Floor, Aston Webb Building	R6

F				
Subject	Description	Time(s)	Venue	Map
French Studies	<i>See Modern Languages</i>			

G

Subject	Description	Time(s)	Venue	Map
Geography	Demonstrations	10.15am 11.00am 12.30pm 2.00pm	Foyer, Ground Floor, Geography Building	R26
Geography	Display and information desk	All day	Great Hall, Ground Floor, Aston Webb Building	R6
Geography	Display and information desk	All day	Foyer, Ground Floor, Geography Building	R26
Geography	Talks – Geography at Birmingham	9.45am 10.30am 12.00noon 1.30pm	Lecture Theatre NG08, Ground Floor, Geography Building	R26
Geology	Display and information desk	All day	Great Hall, Ground Floor, Aston Webb Building	R6
Geology	Display, information desk and demonstrations	All day	Lapworth Museum, Ground Floor, Aston Webb Building	R4
Geology	Talks – Geology at Birmingham and Beyond	10.30am 12.00noon 1.30pm	Dome Lecture Theatre, 2nd Floor, Aston Webb Building	R4
German Studies	<i>See Modern Languages</i>			
Golf Management Studies	<i>See Applied Golf Management Studies</i>			

H

Subject	Description	Time(s)	Venue	Map
Hispanic Studies	<i>See Modern Languages</i>			
History	Display and information desk	All day	The Dome Room, 3rd Floor, Bramall Music Building	R12
History	Talks – History at Birmingham (includes History and Economic and Social History programmes)	9.45am 11.15am 12.45pm 2.15pm	Large Lecture Theatre (120) 1st Floor, Arts Building	R16
History of Art	Display and information desk	All day	Rotunda, 1st Floor, Bramall Music Building	R12
History of Art	Tour of the Barber Institute of Fine Arts	12.00noon	Foyer, Ground Floor, Barber Institute of Fine Arts	R14
History of Art	Talk – History of Art at Birmingham	12.45pm	Lecture Theatre G11, Ground Floor, Barber Institute of Fine Arts	R14
History of Art	Taster session – History of Art	1.30pm	Foyer, Ground Floor, Barber Institute of Fine Arts	R14

I

Subject	Description	Time(s)	Venue	Map
Italian Studies	<i>See Modern Languages</i>			

J				
Subject	Description	Time(s)	Venue	Map
Japanese	<i>See Modern Languages</i>			
Joint Honours (Arts disciplines)	Talks – Joint Honours in Arts Disciplines at Birmingham	11.15am 2.15pm	Vaughan Jeffreys Lecture Theatre, 1st Floor, Education Building	R19
Joint Honours (Arts disciplines)	Display and information desk – Admissions to Joint Honours in Arts disciplines	All day	The Dome Room, 3rd Floor, Bramall Music Building	R12

L				
Subject	Description	Time(s)	Venue	Map
Languages	<i>See Modern Languages</i>			
Law	Display and information desk	All day	Rotunda, 1st Floor, Bramall Music Building	R12
Law	Talks – Studying Law at Birmingham	9.45am 11.15am 12.00noon 1.30pm	Lecture Theatre 1, 3rd Floor, Law Building	R1
Liberal Arts and Sciences	Talk – Studying Liberal Arts and Sciences at Birmingham	1.30pm	Lecture Room 1, 1st Floor, Arts Building	R16
Liberal Arts and Sciences	Display and information desk	All day	Great Hall, Ground Floor, Aston Webb Building	R6
Liberal Arts and Sciences	Display and information desk	All day	Rotunda, 1st Floor, Bramall Music Building	R12

M				
Subject	Description	Time(s)	Venue	Map
Materials Science	<i>See Metallurgy and Materials</i>			
Mathematics	Interactive display and information desk	All day	Maths Learning Centre, 1st Floor, Watson Building	R15
Mathematics	Talks – Why Maths at Birmingham?	9.45am 10.30am 11.15am 12.45pm 2.15pm	Lecture Room A, Ground Floor, Watson Building	R15
Mathematics	Talks – Popular Maths Lecture	12.00noon 1.30pm	Lecture Room A, Ground Floor, Watson Building	R15
Mathematics	Alumni question and answer session – meet recent graduates and find out how our teaching and industrial contacts have helped students succeed after graduation	3.00pm	Lecture Room A, Ground Floor, Watson Building	R15
Mechanical Engineering	Display and information desk	All day	Great Hall, Ground Floor, Aston Webb Building	R6
Mechanical Engineering	Display and information desk and start point for tours of the facilities (including racing car display)	All day	Rooms G26 and G28, Ground Floor, Civil and Mechanical Engineering	Y3

M (continued)				
Subject	Description	Time(s)	Venue	Map
Mechanical Engineering	Talk – Degree programmes in Mechanical Engineering	12.00noon 2.15pm	Room G31, Ground Floor, Civil and Mechanical Engineering	Y3
Mechanical Engineering	Alumni question and answer session – meet recent graduates and find out how our teaching and industrial contacts have helped students succeed after graduation	12.45pm	Room G31, Ground Floor, Civil and Mechanical Engineering	Y3
Medical Science (Biomedical Science)	Talk – Medical Science (BMedSc)	11.15am 12.45pm	Lecture Theatre 3, 1st Floor, Medical School	B1
Medical Science (Biomedical Science)	Display and information desks with admissions tutors (BMedSc)	All day	Common Room, Ground Floor, Wolfson Centre for Medical Education, Medical School	B1
Medicine	Display and information desks with admissions tutors (MBChB)	All day	Common Room, Ground Floor, Wolfson Centre for Medical Education, Medical School	B1
Medicine	Talks – Getting into Medicine (MBChB) Priority at the talk will be given to prospective applicants and where space allows, one accompanying guest	9.45am 12.00noon 2.15pm	Leonard Deacon Lecture Theatre, 1st Floor, Medical School	B1
Medicine	Talk – Graduate Entry Medicine Programme	10.30am	Lecture Theatre 4, Ground Floor, Medical School	B1
Medicine	Talk – Educating Tomorrow's Doctors	12.45pm	Leonard Deacon Lecture Theatre, 1st Floor, Medical School	B1
Medicine	Talks – Student Life in the Medical School	9.00am 1.30pm	Leonard Deacon Lecture Theatre, 1st Floor, Medical School	B1
Medicine	Talk – Student Life in the Medical School	10.30am	Lecture Theatre 3, 1st Floor, Medical School	B1
Metallurgy and Materials	Display and information desk	All day	Great Hall, Ground Floor, Aston Webb Building	R6
Metallurgy and Materials	Building open for viewing	10.00am– 4.00pm	C Block Foyer, Metallurgy and Materials Building	G6
Metallurgy and Materials	Talk – Why Materials Science and Engineering are Vital	12.45pm	Lecture Room GC13, Ground Floor, Metallurgy and Materials Building	G6
Metallurgy and Materials	Talk – The Role of Materials Science in Sports	12.00noon	Lecture Room GC13, Ground Floor, Metallurgy and Materials Building	G6
Metallurgy and Materials	Alumni question and answer session – meet recent graduates and find out how our teaching and industrial contacts have helped students succeed after graduation	1.30pm	Lecture Room GC13, Ground Floor, Metallurgy and Materials Building	G6
Metallurgy and Materials	Demonstrations, lab tours and teaching examples. See 'Visit us' at www.birmingham.ac.uk/schools/metallurgy-materials	10.30am 2.15pm 3.00pm	C Block Foyer, Metallurgy and Materials Building	G6

M (continued)				
Subject	Description	Time(s)	Venue	Map
Modern Languages	Display and information desk (including desks for French, German, Hispanic Studies, Italian, Chinese/ Japanese, European Studies and Russian Studies)	All day	The Dome Room, 3rd Floor, Bramall Music Building	R12
Modern Languages	Talk – BA Modern Languages at Birmingham including all modern languages pathways	11.15am 2.15pm	Lecture Theatre G15, Ground Floor, Muirhead Tower	R21
Modern Languages	Talk – Chinese at Birmingham	1.30pm	Lecture Room 8, 3rd Floor, Arts Building	R16
Modern Languages	Talk – French Studies at Birmingham	12.45pm	Lecture Room 6, 2nd Floor, Arts Building	R16
Modern Languages	Sample seminar – French	1.30pm	Lecture Room 6, 2nd Floor, Arts Building	R16
Modern Languages	Talk – German Studies at Birmingham	11.15am	Lecture Room 8, 3rd Floor, Arts Building	R16
Modern Languages	Sample seminar – German	12.00noon	Lecture Room 8, 3rd Floor, Arts Building	R16
Modern Languages	Talk – German for beginners or near beginners in language degrees or with language degrees	2.15pm	Lecture Room 8, 3rd Floor, Arts Building	R16
Modern Languages	Talk – Hispanic Studies at Birmingham	11.15am	Lecture Room 7, 2nd Floor, Arts Building	R16
Modern Languages	Sample seminar – Hispanic Studies	2.15pm	Lecture Room 5, 2nd Floor, Arts Building	R16
Modern Languages	Talk – Italian Studies at Birmingham	12.00noon	Lecture Room 2, 1st Floor, Arts Building	R16
Modern Languages	Sample seminar – Italian	12.45pm	Lecture Room 4, 1st Floor, Arts Building	R16
Modern Languages	Talk – Japanese at Birmingham	12.45pm	Lecture Room 8, 3rd Floor, Arts Building	R16
Modern Languages	Talk – Russian Studies at Birmingham	11.15am	Lecture Room 5, 2nd Floor, Arts Building	R16
Modern Languages	Sample seminar – Russian	12.00noon	Lecture Room 5, 2nd Floor, Arts Building	R16
Music	Display and information desk	All day	The Dome Room, 3rd Floor, Bramall Music Building	R12
Music	Talk – Music Studies at Birmingham	11.15am	Concert Hall, Ground Floor, Barber Institute of Fine Arts	R14

N				
Subject	Description	Time(s)	Venue	Map
Natural Sciences	Display and information desk	All day	Great Hall, Ground Floor, Aston Webb Building	R6
Natural Sciences	Talk – Studying across the Sciences	12.00noon	Lecture Theatre 117, 1st Floor, Physics West	R8

N (continued)				
Subject	Description	Time(s)	Venue	Map
Nursing	Welcome area: lecturers and students will be available for advice	All day	The Link, 1st Floor, 52 Pritchatts Road and Gisbert Kapp Building	G9 G8
Nursing	Clinical Demonstrations	All day	S102, 1st Floor, 52 Pritchatts Road	G9
Nursing	Talks – Nursing Admissions	9.45am 12.00noon 2.15pm	Lecture Theatre 1, Ground Floor, 52 Pritchatts Road	G9
Nursing	Taster lecture – Please collect tickets (one per student) from the Link (G8). Parents/guests will not be able to attend the lecture as our aim is to give potential students a real lecture experience. Please be aware we only have limited tickets for this event.	10.30am 12.45pm	Room 225, 2nd Floor, Gisbert Kapp Building	G8

O				
Subject	Description	Time(s)	Venue	Map
Oriental Languages	See <i>Modern Languages</i>			

P				
Subject	Description	Time(s)	Venue	Map
Pharmacy	Talk – The new Pharmacy (MPharm) programme	11.15am	Leonard Deacon Lecture Theatre, 1st Floor, Medical School	B1
Pharmacy	Talk – The new Pharmacy (MPharm) programme	12.45pm	Lecture Theatre 4, Ground Floor, Medical School	B1
Pharmacy	Display and information desk with Admissions Tutor (MPharm)	All day	Common Room, Ground Floor, Wolfson Centre for Medical Education, Medical School	B1
Philosophy	Display and information desk	All day	Rotunda, 1st Floor, Bramall Music Building	R12
Philosophy	Taster Lecture – What is Philosophy?	12.45pm	Lecture Room 7, 2nd Floor, Arts Building	R16
Physics and Astronomy	Display and demonstrations	All day	First Year Laboratory, Ground Floor, Poynting Physics Building	R13
Physics and Astronomy	DVD – Why Physics at Birmingham?	All day	Coffee Lounge, 2nd Floor, Poynting Physics Building	R13
Physics and Astronomy	Tour of Nanoscale Physics Research Lab (you need to have signed up to this event by emailing physics-adms@contacts.bham.ac.uk)	11.15am	Foyer, Poynting Physics Building	R13
Physics and Astronomy	Talk – How to Make an Invisibility Cloak – Controlling Light with Metamaterials	9.45am	Large Lecture Theatre, 2nd Floor, Poynting Physics Building	R13
Physics and Astronomy	Talk – Seven Wonders of the Nano World	10.30am	Large Lecture Theatre, 2nd Floor, Poynting Physics Building	R13
Physics and Astronomy	Talk – Sounding stars and the search for new planets in the Galaxy	12.00noon	Large Lecture Theatre, 2nd Floor, Poynting Physics Building	R13

P (continued)				
Subject	Description	Time(s)	Venue	Map
Physics and Astronomy	Talk – Physics to a Degree: Studying Physics at the University of Birmingham	12.45pm	Large Lecture Theatre, 2nd Floor, Poynting Physics Building	R13
Physics and Astronomy	Talk – Physics to a Degree: Studying Physics at the University of Birmingham	1.30pm	Small Lecture Theatre, 2nd Floor, Poynting Physics Building	R13
Physics and Astronomy	Talk – Refrigerators Made from Photons	1.30pm	Large Lecture Theatre, 2nd Floor, Poynting Physics Building	R13
Physics and Astronomy	Talk – Recreating the Big Bang: the LHC at CERN	2.15pm	Large Lecture Theatre, 2nd Floor, Poynting Physics Building	R13
Physics and Astronomy	Talk – Meeting the Ever Growing Demand for Energy: Nuclear Power Past, Present and Future	3.00pm	Large Lecture Theatre, 2nd floor, Poynting Physics Building	R13
Physics and Astronomy	Alumni question and answer session – meet recent graduates and find out how our teaching and industrial contacts have helped students succeed after graduation	11.15am	Small Lecture Theatre, 2nd Floor, Poynting Physics Building	R13
Physiotherapy	Display and information desk	All day	Great Hall, Ground Floor, Aston Webb	R6
Physiotherapy	Display and information desk	All day	Atrium, Ground Floor, Sport, Exercise and Rehabilitation Sciences Building	Y14
Physiotherapy	Talks – Applying for Physiotherapy at the University of Birmingham	9.45am 12.00noon 1.30pm	Lecture Theatre 2, Ground Floor, Sport, Exercise and Rehabilitation Sciences Building	Y14
Physiotherapy	Taster lecture – Parents/guests will not be able to attend the lecture as our aim is to give potential students a real lecture experience. Please be aware we only have limited spaces for this event.	11.15am	Lecture Theatre 2, Ground Floor, Sport, Exercise and Rehabilitation Sciences Building	Y14
Political Science and International Relations	Display and information desk	All day	Great Hall, Ground Floor, Aston Webb Building	R6
Political Science and International Relations	Talks – Studying Politics and International Relations	12.00noon 1.30pm 2.15pm	Lecture Room 7, 2nd Floor, Arts Building	R16
PPE (Policy, Politics and Economics)	Talk – Studying Policy, Politics and Economics (PPE)	2.15pm	Room 112, 1st Floor, Muirhead Tower	R21
PPE (Policy, Politics and Economics)	Display and information desk	All day	Great Hall, Ground Floor, Aston Webb Building	R6
Psychology	Display and information desk	All day	Great Hall, Ground Floor, Aston Webb Building	R6
Psychology	Demonstrations	11.00am– 2.00pm	Reception, Ground Floor, Hills Building	R3
Psychology	Talks – Studying Psychology at Birmingham	9.45am 10.30am 12.45pm 2.15pm	Lecture Theatre W65, Ground Floor, Aston Webb Building	R4

R

Subject	Description	Time(s)	Venue	Map
Russian and East European Studies	<i>See Modern Languages</i>			

S

Subject	Description	Time(s)	Venue	Map
Social Policy	Display and information desk	All day	Great Hall, Ground Floor, Aston Webb Building	R6
Social Policy	Talk – Social Policy and the Professions	1.30pm	Room 714/5, 7th Floor, Muirhead Tower	R21
Social Work	Display and information desk	All day	Great Hall, Ground Floor, Aston Webb Building	R6
Social Work	Survivor exhibition, meet students, view teaching space and the Social Work at Birmingham DVD	All day	7th Floor, Muirhead Tower	R21
Social Work	Talk – Social Work at the University of Birmingham	12.45pm	Room 714/5, 7th Floor, Muirhead Tower	R21
Sociology	Display and information desk	All day	Great Hall, Ground Floor, Aston Webb Building	R6
Sociology	Talk – Sociology at Birmingham	12.45pm	Lecture Theatre G15, Ground Floor, Muirhead Tower	R21
Spanish	<i>See Modern Languages</i>			
Sport and Exercise Sciences	Display and information desk	All day	Great Hall, Ground Floor, Aston Webb Building	R6
Sport and Exercise Sciences	Display and information desk	All day	Atrium, Ground Floor, Sport, Exercise and Rehabilitation Sciences Building	Y14
Sport and Exercise Sciences	Demonstrations	11.00am–2.00pm	Atrium, Ground Floor, Sport, Exercise and Rehabilitation Sciences Building	Y14
Sport and Exercise Sciences	Talks – Studying in the School of Sport, Exercise and Rehabilitation Sciences	10.30am 12.00noon 2.15pm	Lecture Theatre 1, 1st Floor, Sport, Exercise and Rehabilitation Sciences Building	Y14
Sport and Materials Science	Display and information desk	All day	Great Hall, Ground Floor, Aston Webb Building	R6
Sport and Materials Science	Talk – The role of Materials Science in Sports	12.00noon	Lecture Room GC13, Metallurgy and Materials Building	G6
Sport and Materials Science	Talk – Why Materials Science and Engineering are Vital	12.45pm	Lecture Room GC13, Metallurgy and Materials Building	G6
Sport, Physical Education and Coaching Sciences	Display and information desk	All day	Great Hall, Ground Floor, Aston Webb Building	R6
Sport, Physical Education and Coaching Sciences	Display and information desk	All day	Atrium, Ground Floor, Sport, Exercise and Rehabilitation Sciences Building	Y14

S (continued)				
Subject	Description	Time(s)	Venue	Map
Sport, Physical Education and Coaching Sciences	Talks – Studying in the School of Sport, Exercise and Rehabilitation Sciences	10.30am 12.00noon 2.15pm	Lecture Theatre 1, 1st Floor, Sport, Exercise and Rehabilitation Sciences Building	Y14
Sport, Physical Education and Coaching Sciences	Demonstrations	11.00am– 2.00pm	Atrium, Ground Floor, Sport, Exercise and Rehabilitation Sciences Building	Y14
Sport (University of Birmingham Sport)	<i>See University of Birmingham Sport (page 12)</i>			

T				
Subject	Description	Time(s)	Venue	Map
Theology and Religion	Display and information desk	All day	Rotunda, 1st Floor, Bramall Music Building	R12
Theology and Religion	Talk – Theology and Religion programmes at Birmingham including BA Philosophy, Religion and Ethics, BA Politics, Religion and Philosophy and Bachelor/Masters of Divinity	12.00noon	Lecture Room 6, 2nd Floor, Arts Building	R16
Theology and Religion	Tour – Following the Theology talk	12.45pm	Atrium, Ground Floor, European Research Institute	G3

U				
Subject	Description	Time(s)	Venue	Map
Urban and Regional Planning	Display and information desk	All day	Foyer, Ground Floor, Geography Building	R26
Urban and Regional Planning	Display and information desk	All day	Great Hall, Ground Floor, Aston Webb Building	R6
Urban and Regional Planning	Talk – BSc Joint Honours degrees in Urban and Regional Planning	1.30pm	Lecture Theatre 301, 3rd Floor, Biosciences Building	R27

W				
Subject	Description	Time(s)	Venue	Map
War Studies	Display and information desk – History and Cultures	All day	The Dome Room, 3rd Floor, Bramall Music Building	R12
War Studies	Talks – War Studies at Birmingham	11.15am 1.30pm	Lecture Room 2, 1st Floor, Arts Building	R16

Refreshments

Location	Facilities	Opening times
BBQ, Chancellor's Court (R24)	Serving a variety of hot BBQ food	10.00am–4.00pm
Bratby Bar, Ground Floor, Staff House (R24)	Serving a limited selection of hot food, snacks and drinks	9.30am–3.00pm (food), 11.30am–3.00pm (bar)
Café Aroma, 1st Floor, Staff House (R24)	Parents' haven serving a selection of sandwiches and hot and cold drinks	9.00am–3.00pm
Café Go/Go Mex, Food Court, 1st Floor, University Centre (R23)	A 300-seat restaurant area providing handmade deli sandwiches, jacket potatoes, pre-packed sandwiches and Mexican burrito bar	8.00am–5.00pm
Chemical Engineering (Y11)	A coffee shop providing a range of snacks, a large range of speciality coffees, sandwiches, confectionery and homemade cakes	9.00am–2.00pm
Costa at The Bramall Music Building (R12)	Providing a variety of speciality coffees, sandwiches and snacks	8.00am–4.30pm
Costa, University Centre (R23)	Serving Costa hot and cold beverages, cakes and light snacks	8.00am–6.00pm
Cyber Go, Ground Floor, Arts Building (R16)	A popular coffee shop located in a new computer cluster, providing a large range of speciality coffees, sandwiches and snacks	10.00am–3.00pm
Gisbert Kapp, 1st Floor, (G8)	A coffee shop providing a large range of speciality coffees, sandwiches, snacks, confectionery and cold drinks	9.00am–3.30pm
Go 2, Learning Resource Centre (R28)	This popular sandwich shop sells sandwiches, pastries, speciality coffees and a wide range of drinks and confectionery	9.00am–4.00pm
Go Central, University Centre (R23)	Serves breakfast, Asian, Italian and British cuisine	8.00am–4.00pm
Go @ undercroft, Ground Floor, Biosciences Building (R27)	A coffee shop providing a large range of speciality coffees, sandwiches, snacks, confectionery and cold drinks	9.00am–3.00pm
iLounge Coffee Shop, Main Library (R22)	Coffee shop providing paninis, toasted teacakes, sandwiches, salad, smoothies and a wide selection of cakes	8.00am–5.00pm
Infusion, The Hub, Shackleton, Vale Village	Serving a hot lunch, pasta bar, jacket potatoes and salads	11.00am–3.00pm
Mechanical Engineering (Y3)	A coffee shop providing soup, a large range of speciality coffees, sandwiches, confectionery and cakes	10.00am–2.00pm
Med Café, Medical School (B1)	A fast-food restaurant selling a range of jacket potatoes, baguettes, sandwiches, pastries, and hot and cold drinks	9.00am–4.00pm
Physics, Poynting Building, 2nd Floor (R13)	A very popular coffee shop providing a large range of speciality coffees, sandwiches, confectionery and cakes	9.00am–4.00pm
Raising the Bar, Munrow Sports (R25)	Serves a wide range of great value meals and drinks	8.30am–3.00pm
Skool Café, School of Education	A coffee shop providing a range of speciality coffees, sandwiches, confectionery and cakes	8.30am–3.00pm
Starbucks, Muirhead Tower (R21)	Popular coffee house serving a wide selection of quality coffees and food options	8.00am–5.00pm
The Melt, The Hub, Shackleton, Vale Village	Serving sandwiches, salads and paninis, great coffee and tempting cakes	9.00am–4.00pm
Winterbourne House and Garden Tea Room (G12)	A popular tea room providing a variety of hot and cold meals. Entry to the house and garden is required.	11.00am–4.30pm

Day planner

The day planner is designed to help make sure you are able to visit all of the activities and areas you would like to on the day.

Time	Talk/activity	Location	Map building ref
9.00am			
9.15am			
9.30am			
9.45am			
10.00am			
10.15am			
10.30am			
10.45am			
11.00am			
11.15am			
11.30am			
11.45am			
12.00noon			
12.15pm			
12.30pm			
12.45pm			
13.00pm			
13.15pm			
13.30pm			
13.45pm			
14.00pm			
14.15pm			
14.30pm			
14.45pm			
15.00pm			
15.15pm			
15.30pm			
15.45pm			

R1 Law
R2 Frankland Building
R3 Hills Building
Psychology
R4 Aston Webb Earth Sciences
R6 Aston Webb
Reception
Great Hall (displays)
1st Floor Rotunda (displays)
Lost Persons/Property
First Aid
R12 Bramall Music Building
1st Floor Rotunda (displays)
3rd Floor Dome Room
(displays)
R13 Poynting Building
Physics
R14 Barber Institute of Fine Arts
art gallery (Accommodation
bus tours/Big Brum Bus Tour)
R15 Watson Building
Mathematics
R16 Arts Building
Humanities and
Historical Studies

R17 Ashley Building
R19 Education
Vaughan Jeffreys
Lecture Theatre (talks)
R21 Muirhead Tower
R22 Main Library
R23 University Centre
Avon Lecture Theatre (talks)
Shops/Banks/Hair Salon/
Optician
R24 Staff House
Refreshments
R25 Munrow Sports Centre
R26 Geography, Earth and
Environmental Sciences
R27 Biosciences
R28 Learning Centre
and Primary Care
Clinical Sciences
O1 Guild of Students
(students' union)
Debating Hall (talks)
Shops/Banks/Travel Agent

O2 St Francis Hall
Multi-faith Chaplaincy
O3 University House,
Business School
Y2 Haworth Building
Chemistry
Y3 Mechanical Engineering
and Civil Engineering
Y9 Computer Science
Y11 Chemical Engineering
Y14 Sport, Exercise and
Rehabilitation Sciences
B1 Medical School
G3 European Research Institute
G6 Metallurgy and Materials
G8 Gisbert Kapp Building
Electronic, Electrical and
Computer Engineering
G9 52 Pritchatts Road
G12 Winterbourne House
and Garden

Maps with a more detailed
index can be found on the
University's website at
[www.birmingham.ac.uk/
directions](http://www.birmingham.ac.uk/directions)
Larger maps will also be
available on the day.



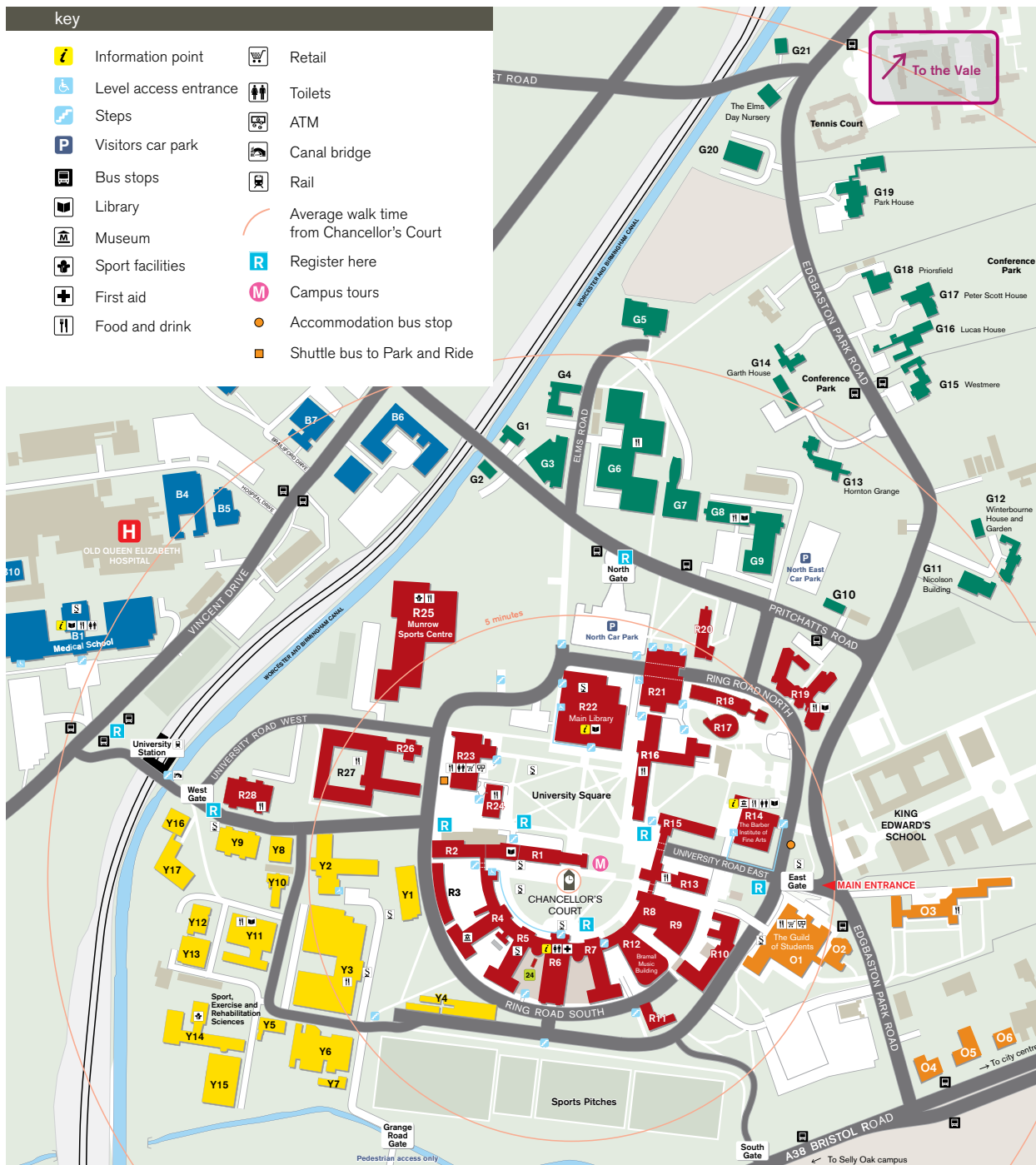
Edgbaston campus map

(Fold out this page to view the map key)



key

- | | | | |
|--|-----------------------|--|---|
| | Information point | | Retail |
| | Level access entrance | | Toilets |
| | Steps | | ATM |
| | Visitors car park | | Canal bridge |
| | Bus stops | | Rail |
| | Library | | Average walk time from Chancellor's Court |
| | Museum | | Register here |
| | Sport facilities | | Campus tours |
| | First aid | | Accommodation bus stop |
| | Food and drink | | Shuttle bus to Park and Ride |



Please note some buildings do not appear on this map due to the size and scale. Larger maps will also be available on the day.

UNIVERSITY OF BIRMINGHAM

Edgbaston, Birmingham,
B15 2TT, United Kingdom

www.birmingham.ac.uk



When you have finished with
this brochure please recycle it

