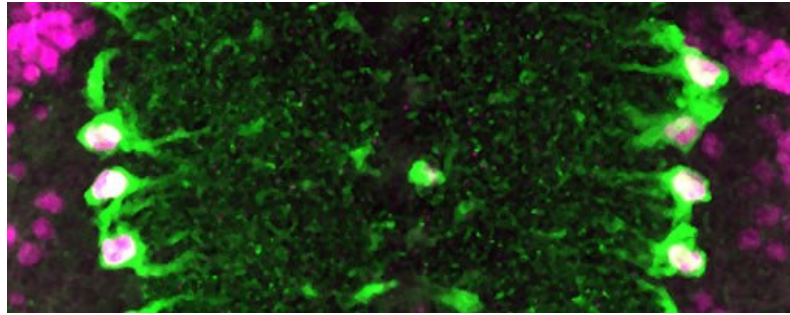


## About BALM



The BALM facility is located in the School of Biosciences in the College of life and Environmental Sciences.

Our facility provides cutting edge microscopy resources to members of the University community and beyond. Our microscopes are routinely used for high resolution live-cell imaging, as well as analysis of organisms ranging from Drosophila to Zebrafish.

High resolution and rapid acquisition speed confocal imaging:

- 4D imaging
- Spectral-unmixing
- Multicolour total internal reflection fluorescence (TIRF) microscopy
- Quantitative analysis of imaging data on dedicated offline systems
- Competitive Pricing.
- Discounted rates available for preliminary studies/method development.

**[Microscopes within the BALM facility \(/facilities/balm/microscopes/index.aspx\)](/facilities/balm/microscopes/index.aspx)**

