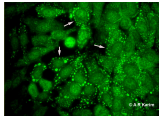


HEp-2: Uncharacterised patterns

Cytoplasmic dots



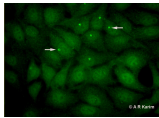
[//Images/College-MDS-only/facilities/cis/cis-image-library/images/hep20334649\(1\).jpg](#)

This pattern appears to be similar to the glycine-tryptophan repeat bodies (GWB) antibody that is found in mitochondrial negative patients. The patient harbouring this antibody is a 39 year old male with a history of hepatitis C infection, who developed a cancerous lump and required liver transplant.

This patient had raised polyclonal immunoglobulins and multiple dot ANA (liver associated) with a titre of 1/100 but LKM, smooth muscle and mitochondrial negative.

Large dot in some nuclei

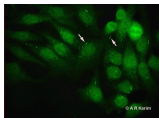
[Open all sections](#)



Large dot in some nuclei (probably mitotic related).

[//Images/College-MDS-only/facilities/cis/cis-image-library/images/066577\(1\).jpg](#)

Rod-like fibres



The appearance of this antibody is similar to cytoplasmic rings/rods pattern observed in some patients with HCV viral infection.

[//Images/College-MDS-only/facilities/cis/cis-image-library/images/0434718.jpg](#)