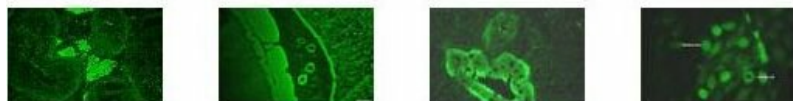


# Immunology Training



## Essential immunology

[Open all sections](#)

We are grateful to Dr. Stephen Young for his contribution to these lecture notes on essential immunology.

- [Diagnosis of patients with immunodeficiency \(/Documents/college-mds/facilities/cis/Essentialimmunology/Chapter2.pdf\)](#)
- [The immune response to infection \(/Documents/college-mds/facilities/cis/Essentialimmunology/Chapter1.pdf\)](#)
- [Allergy \(/Documents/college-mds/facilities/cis/Essentialimmunology/Chapter3.pdf\)](#)
- [Immunological Tolerance and Autoimmunity \(/Documents/college-mds/facilities/cis/Essentialimmunology/Chapter4.pdf\)](#)
- HLA- disease associations and transplantation
- [Tissue specific autoimmune diseases \(/Documents/college-mds/facilities/cis/Essentialimmunology/Chapter5.pdf\)](#)
- [Systemic autoimmune disease \(/Documents/college-mds/facilities/cis/Essentialimmunology/Chapter7.pdf\)](#)
- [Normal production of lymphomyeloid cells and their neoplastic counterparts \(/Documents/college-mds/facilities/cis/Essentialimmunology/Chapter8.pdf\)](#)

## Clinical Immunology Training Seminars

Title	Speakers	Presentations
Improving the Staging Systems in MRC multiple Myeloma Trials	Janet Dunn, Mark Drayson	Available
Introduction to Internal Auditing	Geoff Holt	<a href="#">Available (/Documents/college-mds/facilities/cis/NHSAuditingOverview.pdf)</a>
Anti-Neutrophil Cytoplasm Antibody Associated Vasculitis	Matthew Morgan	<a href="#">Available (/Documents/college-mds/facilities/cis/ANCA.pdf)</a>
Risk assessment - how, why and implications	Beverley Davies	<a href="#">Available (/Documents/college-mds/facilities/cis/BioLabSafety.pdf)</a>
Modernising Scientific Careers	Louise Stewart	Available
Revolutionising the way you look at allergy	Phadia	<a href="#">Available (/Documents/college-mds/facilities/cis/MolecularAllergologyNov2010.pdf)</a>
Food allergy. Know your enemy	ImmunoCAP	<a href="#">Available (/Documents/college-mds/facilities/cis/NICEpresentation(2).pdf)</a>

## Myeloma Forum

Title	Presentations
Understanding immune system	<a href="#">Available (/Documents/college-mds/facilities/cis/Myelomaforum.pdf)</a>

## Hitchhikers day: B and T cells in health and disease

Topic	Speakers	Presentations
T cell ontogeny	Graham Anderson	<a href="#">Available (/Documents/college-mds/facilities/cis/GrahamAnderson.pdf)</a>
Cellular responses to viral infections	Paul Moss	<a href="#">Available (/Documents/college-mds/facilities/cis/PaulMoss.pdf)</a>
Adoptive immunotherapy		
Radiosensitivity syndromes	Malcolm Taylor	
Plasma Cell Dyscrasias	Mark Drayson	<a href="#">Available (/Documents/college-mds/facilities/cis/MarkDrayson.pdf)</a>
Organisation of lymphoid tissues	Peter Lane	<a href="#">Available (/Documents/college-mds/facilities/cis/LaneNR1230305.pdf)</a>
Antibody responses		
T cell neoplasms phenotyping and clinical presentation	Sylvie Freeman	<a href="#">Available (/Documents/college-mds/facilities/cis/SylvieFreeman.pdf)</a>
B cell neoplasia – phenotypes and clinical presentation		
Plasma cells	Ian MacLennan	<a href="#">Available (/Documents/college-mds/facilities/cis/IanMacLennan.pdf)</a>
EBV infection and immunity	Andrew Hislop	<a href="#">Available (/Documents/college-mds/facilities/cis/AndrewHislop.pdf)</a>
EBV infection and leukaemogenesis	Sridhar Chaganti	<a href="#">Available (/Documents/college-mds/facilities/cis/SridharChaganti.pdf)</a>
SLE pathogenesis	Chee-Seng Yee	<a href="#">Available (/Documents/college-mds/facilities/cis/CheeSengYee.pdf)</a>
T cells in inflammatory disease	Dagmar Scheel-Toellne	<a href="#">Available (/Documents/college-mds/facilities/cis/DagmarScheelToellner.pdf)</a>
Data on MGUS and Myeloma	Mark Drayson	<a href="#">Available (/Documents/college-mds/facilities/cis/MRPmyeloma2008MTD.pdf)</a>

[Diagnostic value of antibodies in clinical practice \(/Documents/college-mds/facilities/cis/Mohammedslecture.pdf\)](#)

by Dr. Mohammed El lahawi, Consultant Neurologist, Department of Neurology, Queen Elizabeth Hospital, Birmingham

[Detection of paraneoplastic neurological antibodies \(/Documents/college-mds/facilities/cis/ARKslecture.pdf\)](#)

by Dr. Abid Karim, Principal Clinical Scientist specialist in neuroimmunology, University of Birmingham Medical School

## Research and Development

The department is ideally placed for research and development activities having close ties with both clinical and research departments in the University and the Trust. This facility to bridge basic and clinical research with routine clinical practice is the main reason for situating the service within the medical school environment.

Departmental R & D activities may be appreciated by looking through our [publications \(/facilities/clinical-immunology-services/immunology-services/diagnostic-services/Clinical-trials.aspx\)](#).

---

[Privacy](#) | [Legal](#) | [Cookies and cookie policy](#) | [Accessibility](#) | [Site map](#) | [Website feedback](#) | [Charitable information](#)

© University of Birmingham 2015

