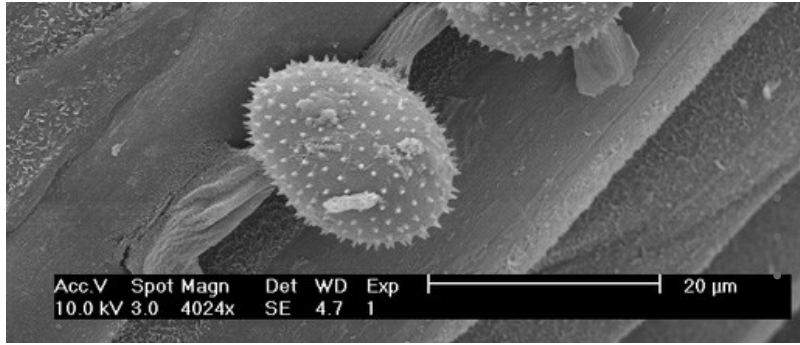


## Services



### Who should be interested?

Manufacturers  
Scientific laboratories

### What can we do?

External shape  
Internal microstructure  
Chemical microanalysis

### Expertise

The Centre for Electron Microscopy opened in 1999. The three technical and two academic staff have many years' experience of operating electron microscopes and interpreting data. We cover the whole materials and life sciences spectrum.

## Equipment

We have a wide range of SEMs and TEMs, including environmental SEM, cryo-electron microscopy, FIB and SDD. We also have a wide range of preparation equipment, suitable for metals, ceramics, polymers and biological specimens.