

Sexuality and Gender Studies PhD/MA by Research (On-Campus or by Distance Learning)



Supervision from leading international scholars of interdisciplinary Sexuality and Gender Studies.

Postgraduate research in Sexuality and Gender Studies is a truly interdisciplinary collaboration, led by academics from a range of disciplines, each bringing their specific expertise to bear. Research can focus on topics including: feminist theory, masculinity studies, queer theory, postcolonial theory, psychoanalysis, ethnography, sexology, and criminology.

Study here and find out why the University of Birmingham was awarded The Times and The Sunday Times University of the Year 2013-14
<http://www.birmingham.ac.uk/news/latest/2013/09/20-sep-Birmingham-announced-as-University-of-the-Year.aspx>

Course fact file

Type of Course: Distance learning, doctoral research

Study Options: Distance learning, full time, part time

Duration: PhD - 3 years full-time, 6 years part-time; MA by Research - 1 year full-time, 2 years part-time

Start date: September

Contact

Professor Lisa Downing, convenor of Sexuality and Gender Studies

Tel: +44 (0)121 414 5981

Email: l.m.downing@bham.ac.uk (<mailto:l.m.downing@bham.ac.uk>)

Research degrees are best planned by individual discussion, so if you have a particular subject area in mind, please contact a staff member working in your area of interest in the first instance. See [Research interests \(http://www.birmingham.ac.uk/postgraduate/courses/research/arts-law-inter/sexuality-gender-studies.aspx#ResearchInterestsTab\)](http://www.birmingham.ac.uk/postgraduate/courses/research/arts-law-inter/sexuality-gender-studies.aspx#ResearchInterestsTab) for more information.

[School of Languages, Cultures, Art History and Music \(/schools/lcahm/index.aspx\)](/schools/lcahm/index.aspx)

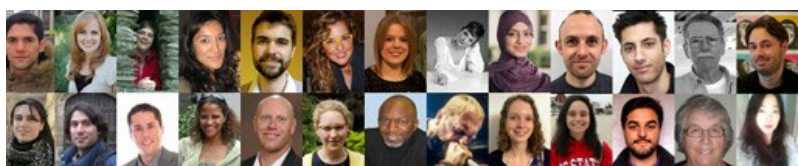
Details

The **MA by Research** programme requires you to prepare a dissertation of up to 40,000 words on a topic of your choice, for which an academic staff member will provide expert supervision.

The **PhD** – the most advanced research degree – leads to a dissertation of up to 80,000 words on a subject of your choice and under the expert supervision of an academic member of staff.

You can study an MA by Research or PhD programme on campus or [by Distance Learning \(/students/courses/postgraduate/research/arts-law-inter/distance-learning.aspx\)](/students/courses/postgraduate/research/arts-law-inter/distance-learning.aspx).

Postgraduate research is pursued in its broadest social and intellectual context, and you develop your research project within an active and friendly postgraduate community. Postgraduates are offered opportunities to present work-in-progress at Departmental Research Seminars and at the School Postgraduate Forum. As appropriate, staff and supervisors will also guide postgraduate students in important areas beyond the thesis itself, such as the preparation of external conference papers and research publications. Since we are particularly interested in interdisciplinary and cross-disciplinary work, it is possible to arrange joint supervision involving staff from other Departments, thereby giving you access to a broader knowledge base and maximising the quality and originality of your work.



Profiles of our current doctoral researchers

[\(/research/activity/gender/postgraduate/index.aspx\)](/research/activity/gender/postgraduate/index.aspx)

Fees and funding

We charge an annual tuition fee. Fees for 2015/16 are currently as follows:

Home / EU £4,090 full-time; £2,045 part-time

For part-time students, the above fee quoted is for year one only and tuition fees will also be payable in subsequent years of your programme.

Tuition fees can either be paid in full or by instalments.

Eligibility for Home/EU or Overseas fees can be verified with Admissions. Learn more about [fees for international students \(http://www.birmingham.ac.uk/International/students/finance/fees.aspx\)](http://www.birmingham.ac.uk/International/students/finance/fees.aspx).

Learn more about [postgraduate tuition fees and funding \(http://www.birmingham.ac.uk/postgraduate/dr-fees/index.aspx\)](http://www.birmingham.ac.uk/postgraduate/dr-fees/index.aspx).

Scholarships and studentships

Scholarships to cover fees and/or maintenance costs may be available. To be eligible for these awards, candidates must hold either an offer of a place to study or have submitted an application to study at the University. To discover whether you are eligible for any award across the University, and to start your funding application, please visit the University's [Postgraduate Funding Database \(http://www.birmingham.ac.uk/students/fees/funding/FundingFilter.aspx\)](http://www.birmingham.ac.uk/students/fees/funding/FundingFilter.aspx).

International students can often gain funding through overseas research scholarships, Commonwealth scholarships or their home government.

Entry requirements

This programme welcomes applicants from a range of disciplinary and interdisciplinary perspectives, but a good Honours degree is normally a requirement.

Learn more about [entry requirements \(http://www.birmingham.ac.uk/students/requirements/requirements-pg/index.aspx\)](http://www.birmingham.ac.uk/students/requirements/requirements-pg/index.aspx).

International students

Academic requirements

We accept a range of qualifications; our [country pages \(http://www.birmingham.ac.uk/international/students/country/index.aspx\)](http://www.birmingham.ac.uk/international/students/country/index.aspx) show you what qualifications we accept from your country.

English language requirements

You can satisfy our English language requirements in two ways:

- by holding an [English language qualification \(http://www.birmingham.ac.uk/students/requirements/requirements-pg/international/index.aspx\)](http://www.birmingham.ac.uk/students/requirements/requirements-pg/international/index.aspx) to the right level
- by taking and successfully completing one of our [English courses for international students \(http://www.birmingham.ac.uk/students/requirements/requirements-pg/international/english-courses.aspx\)](http://www.birmingham.ac.uk/students/requirements/requirements-pg/international/english-courses.aspx)

How to apply

Please consult our list of [staff research interests \(http://www.birmingham.ac.uk/research/activity/gender/staff/index.aspx\)](http://www.birmingham.ac.uk/research/activity/gender/staff/index.aspx) in Sexuality and Gender Studies, and make contact with a supervisor with whom you would like to work. They will be delighted to hear from you, and will advise you on the next steps, in terms of putting together a research proposal, potentially applying for funding, and which department to apply for.

Any initial academic enquiries should be directed to Lisa Downing, Professor of French Discourses of Sexuality and convenor of this programme:
l.m.downing@bham.ac.uk (<mailto:l.m.downing@bham.ac.uk>)

Research interests of staff

Convenor of Sexuality and Gender Studies:

- Professor Lisa Downing
Professor of French Discourses of Sexuality
Tel: +44 (0) 121 414 5981
Email: l.m.downing@bham.ac.uk (<mailto:l.m.downing@bham.ac.uk>)

Academic staff with interests in sexuality and gender studies:

- Dr Michele Aaron
Senior Lecturer in American and Canadian Studies
Tel: +44 (0) 121 414 5750
Email: m.aaron@bham.ac.uk (<mailto:m.aaron@bham.ac.uk>)
- Dr Francesca Berry
Lecturer in Art History, Film and Visual Studies
Tel: +44 (0) 121 414 3930
Email: f.berry@bham.ac.uk (<mailto:f.berry@bham.ac.uk>)
- Dr Amy Brosius
Lecturer of Musicology
Email: a.brosius@bham.ac.uk (<mailto:a.brosius@bham.ac.uk>)
- Professor Leslie Brubaker
Professor of Byzantine Art
Tel: +44 (0) 121 414 2944
Email: l.brubaker@bham.ac.uk (<mailto:l.brubaker@bham.ac.uk>)
- Dr Shelley Budgeon
Senior Lecturer in Political Science and International Studies
Tel: +44 (0) 121 415 8621
Email: s.budgeon@bham.ac.uk (<mailto:s.budgeon@bham.ac.uk>)

- Emma Foster
Lecturer in International Politics and Gender
Email: e.a.foster@bham.ac.uk (<mailto:e.a.foster@bham.ac.uk>)
- Professor Marie Fox
Professor of Socio-Legal Studies
Tel: +44 (0) 121 414 6323
Email: m.fox@bham.ac.uk (<mailto:m.fox@bham.ac.uk>)
- Dr Shelley Godsland
Senior Lecturer in Hispanic Studies
Tel: +44 (0) 121 414 6041
Email: s.godsland@bham.ac.uk (<mailto:s.godsland@bham.ac.uk>)
- Dr Elystan Griffiths
Senior Lecturer in German
Tel: +44 (0) 121 414 6178
Email: e.griffiths@bham.ac.uk (<mailto:e.griffiths@bham.ac.uk>)
- Dr Deryn Guest
Senior Lecturer in Biblical Hermeneutics
Tel: +44 (0) 121 414 3914
Email: d.p.guest@bham.ac.uk (<mailto:d.p.guest@bham.ac.uk>)
- Dr Rosie Harding
Senior Lecturer, Birmingham Law School
Tel: +44 (0) 121 414 4960
Email: r.j.harding@bham.ac.uk (<mailto:r.j.harding@bham.ac.uk>)
- Dr Louise Hardwick
Lecturer in French Studies
Tel: +44 (0) 121 414 5964
Email: l.a.hardwick@bham.ac.uk (<mailto:l.a.hardwick@bham.ac.uk>)
- Dr Matt Houlbrook
Senior Lecturer in Modern British History
Email: m.houlbrook@bham.ac.uk (<mailto:m.houlbrook@bham.ac.uk>)
- Dr Kate Ince
Reader in French Film and Gender Studies
Tel: +44 (0) 121 414 5972
Email: k.l.ince@bham.ac.uk (<mailto:k.l.ince@bham.ac.uk>)
- Dr Monica Jato
Senior Lecturer in Hispanic Studies
Tel: +44 (0) 121 414 4088
Email: m.jato@bham.ac.uk (<mailto:m.jato@bham.ac.uk>)
- Dr Imogen Jones
Lecturer, Birmingham Law School
Tel: +44 (0) 121 414 9038
Email: i.jones@bham.ac.uk (<mailto:i.jones@bham.ac.uk>)
- Dr Helen Laville
Senior Lecturer in American Studies
Tel: +44 (0) 121 414 5737
Email: h.laville@bham.ac.uk (<mailto:h.laville@bham.ac.uk>)
- Dr Iain Law
Senior Lecturer in Philosophy
Tel: +44 (0) 121 414 8336
Email: i.law@bham.ac.uk (<mailto:i.law@bham.ac.uk>)
- Dr Elizabeth L'Estrange
Lecturer in History of Art
Tel: +44 (0) 121 414 8042
Email: e.a.lestrange@bham.ac.uk (<mailto:e.a.lestrange@bham.ac.uk>)
- Dr Deborah Longworth
Senior Lecturer, Department of English
Tel: +44 (0) 121 414 7248
Email: d.l.longworth@bham.ac.uk (<mailto:d.l.longworth@bham.ac.uk>)
- Dr Miriam Muller
Lecturer in Medieval History
Tel: +44 (0) 121 414 5741
Email: m.muller@bham.ac.uk (<mailto:m.muller@bham.ac.uk>)
- Dr Charlotte Ross
Senior Lecturer in Italian Studies
Tel: +44 (0) 121 414 7505
Email: c.e.ross@bham.ac.uk (<mailto:c.e.ross@bham.ac.uk>)
- Dr Joanne Sayer
Senior Lecturer in Cultural Theory and German Studies
Tel: +44 (0) 121 414 6177
Email: j.sayer@bham.ac.uk (<mailto:j.sayer@bham.ac.uk>)
- Dr Kathryn Simpson
Senior Lecturer in English
Tel: +44 (0) 121 415 8219
Email: k.l.simpson@bham.ac.uk (<mailto:k.l.simpson@bham.ac.uk>)
- Professor Christine Skelton
Professor of Gender Equality in Education
Tel: +44 (0) 121 414 3474
Email: c.skelton@bham.ac.uk (<mailto:c.skelton@bham.ac.uk>)
- Dr Camilla Smith

Lecturer in Art History, Film and Visual Studies

Tel: +44 (0) 121 414 7568

Email: [h.c.smith@bham.ac.uk \(mailto:h.c.smith@bham.ac.uk\)](mailto:h.c.smith@bham.ac.uk)

- Nicola Smith
Senior Lecturer in Political Science
Tel: +44 (0) 121 288 2937
+44 (0) 121 414 7569
Email: [n.j.smith@bham.ac.uk \(mailto:n.j.smith@bham.ac.uk\)](mailto:n.j.smith@bham.ac.uk)
- Jill Steans
Senior Lecturer in International Relations Theory
Tel: +44 (0) 121 414 6278
Email: [j.a.steans@bham.ac.uk \(mailto:j.a.steans@bham.ac.uk\)](mailto:j.a.steans@bham.ac.uk)
- Dr Nicki Ward
Lecturer in Applied Social Sciences
Tel: +44 (0) 121 414 5713
Email: [n.j.ward@bham.ac.uk \(mailto:n.j.ward@bham.ac.uk\)](mailto:n.j.ward@bham.ac.uk)
- Dr Ruth Whittle
Lecturer in German Studies
Tel: +44 (0) 121 414 5996
Email: [r.whittle@bham.ac.uk \(mailto:r.whittle@bham.ac.uk\)](mailto:r.whittle@bham.ac.uk)
- Professor Heather Widdows
Head of Research for Philosophy, Theology and Religion
Tel: +44 (0) 121 414 8399
Email: [h.widdows@bham.ac.uk \(mailto:h.widdows@bham.ac.uk\)](mailto:h.widdows@bham.ac.uk)
- Dr Jessica Woodhams
Senior Lecturer in Forensic Psychology
Email: [j.woodhams@bham.ac.uk \(mailto:j.woodhams@bham.ac.uk\)](mailto:j.woodhams@bham.ac.uk)
- Dr Simon Yarrow
Lecturer in Medieval History
Tel: +44 (0) 121 414 5744
Email: [s.s.yarrow@bham.ac.uk \(mailto:s.s.yarrow@bham.ac.uk\)](mailto:s.s.yarrow@bham.ac.uk)

Employability

The University of Birmingham has been ranked 8th in the UK and 60th in the world for post-qualification employability in the latest global survey of universities commissioned by the International Herald Tribune.

Your degree will provide excellent preparation for employment and this will be further enhanced by the employability skills training offered through the College of Arts and Law Graduate School.

Adobe Flash Player or QuickTime is required for video playback. [Get the latest Flash Player](#) [Get the latest version of QuickTime](#)

Birmingham's Modern Languages postgraduates develop excellent communication skills, whilst cultural awareness and foreign language skills are highly sought after by employers. Postgraduates in Modern Languages also have a range of transferable skills including the ability to gather and interpret information, organisational skills and the ability to work well with others. Such skills can be used in a variety of occupations.

Over the past five years, over 94% of Modern Languages postgraduates were in work and/or further study six months after graduation. Some of our language graduates train to become professional linguists such as translators and interpreters. Others graduates enter employment where their language skills may be advantageous but not central to their role ? for example, within international organisations, the Civil Service and in the travel and hospitality industry. Employers that graduates have gone on to work for include: Arts and Humanities Research Council; Deloitte; Tate Britain Gallery; University of Manchester; and Zamyn (a communications agency).

