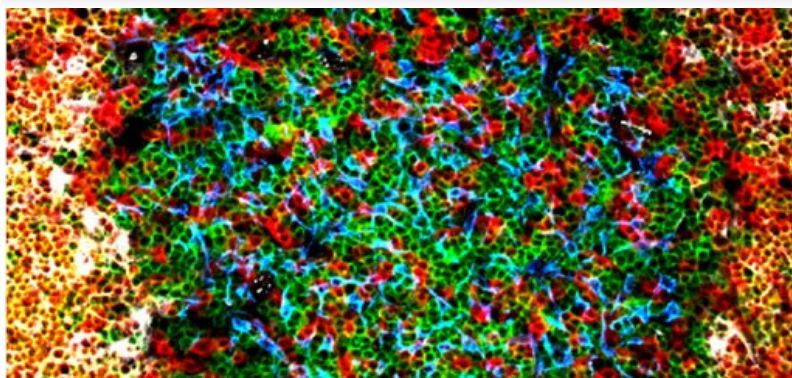


Immunity and Infection PhD/MD/MSc by Research



We have a large community of academic, research and support staff and postgraduate students, and an annual turnover of approximately £8 million support for research. Our research is grouped into the following four themes: Immune Regulation; Inflammation and Inflammatory Disease; Stem Cell Biology and Gene Regulation; and Bacterial Infections, Pathogenesis and Antibiotic Resistance.

[Study here and find out why the University of Birmingham was awarded The Times and The Sunday Times University of the Year 2013-14](http://www.birmingham.ac.uk/news/latest/2013/09/20-sep-Birmingham-announced-as-University-of-the-Year.aspx)
 (<http://www.birmingham.ac.uk/news/latest/2013/09/20-sep-Birmingham-announced-as-University-of-the-Year.aspx>)

Course fact file

Type of Course: Doctoral research

Study Options: Full time, part time

Duration: PhD – 3 years full-time, 6 years part-time; MSc by Research – 1 year full-time, 2 years part-time; MD – 2 years minimum part-time

Start date: Research degrees may start at any time of the year, though for most this will be September

Contact

College of Medical and Dental Sciences Graduate School: mds-gradschool@contacts.bham.ac.uk (<mailto:mds-gradschool@contacts.bham.ac.uk>)

You can contact us on +44 (0)121 414 5005

[School of Immunity and Infection \(/schools/immunity-infection/index.aspx\)](/schools/immunity-infection/index.aspx)

[Follow us on Twitter \(http://twitter.com/unibirm_MDS\)](http://twitter.com/unibirm_MDS)

Details

We have a large community of academic, research and support staff and postgraduate students, and an annual turnover of approximately £8 million support for research

Our research is themed as follows:

- **[Immune Regulation \(#immune\)](#)**
- **[Inflammation and Inflammatory Disease \(#inflammation\)](#)**
- **[Stem Cell Biology and Gene Regulation \(#stemcell\)](#)**
- **[Bacterial Infections, Pathogenesis and Antibiotic Resistance \(#bacterial\)](#)**

Fees and funding

[Standard fees \(/postgraduate/dr-fees/tuition.aspx\)](/postgraduate/dr-fees/tuition.aspx) apply, although bench fees are levied for research degrees according to the nature of the project.

Learn more about **[fees and funding \(/postgraduate/dr-fees/index.aspx\)](/postgraduate/dr-fees/index.aspx)**

Scholarships and studentships

Funding is available from major sponsors including MRC, BBSRC, the Wellcome Trust and local endowments. For postgraduate studentships in Immunity and Infection, please contact the School directly. For general scholarship enquiries email sfo@contacts.bham.ac.uk (<mailto:sfo@contacts.bham.ac.uk>)

International students can often gain funding through overseas research scholarships, Commonwealth scholarships or their home government.

Entry requirements

Learn more about **[entry requirements \(/postgraduate/requirements-dr/step1.aspx\)](/postgraduate/requirements-dr/step1.aspx)**

International students

We accept a range of qualifications from different countries – learn more about **[international entry requirements \(/postgraduate/requirements-dr/step1.aspx\)](/postgraduate/requirements-dr/step1.aspx)**

[Standard English language requirements \(/postgraduate/requirements-pgt/international/index.aspx\)](/postgraduate/requirements-pgt/international/index.aspx) apply.

How to apply

When clicking on the Apply Now button you will be directed to an application specifically designed for the programme you wish to apply for where you will create an account with the University application system and submit your application and supporting documents online. Further information regarding how to apply online can be found on the [How to apply pages \(http://www.birmingham.ac.uk/students/courses/postgraduate/apply-pg/index.aspx\)](http://www.birmingham.ac.uk/students/courses/postgraduate/apply-pg/index.aspx)

Apply now (<https://pga.bham.ac.uk/pages/MDS039.htm>)

Related news and events

[Modified Ecstasy holds promise as blood cancer treatment \(/research/impact/our/news/items/cancer.aspx\)](#)

[Public choose antibiotics as the winning theme for £10m prize \(/news/latest/2014/06/antibiotic-resistance-wins-10m-prize-30-06-14.aspx\)](#)

[Public choose antibiotics as the winning theme for £10m prize \(/university/colleges/mds/news/2014/06/antibiotic-resistance-wins-10m-prize-30-06-14.aspx\)](#)

[University of Birmingham expert spearheads campaign to boost antibiotic research \(/research/impact/our/news/items/antibiotics.aspx\)](#)

[Birmingham scientists win £1m cancer research boost \(/research/impact/our/news/items/cancer-research-funding-boost.aspx\)](#)

[Birmingham scientists discover 'how to stop your immune system from killing you' \(/research/impact/our/news/items/immunity-hoover.aspx\)](#)

[Call to action on antibiotic resistance \(/research/impact/our/news/items/antibiotic-resistance.aspx\)](#)

Research interests of staff

Before submitting an application to the University, you will need to identify potential supervisors in your desired field of research in order that you can indicate this in your application. There will be a delay in processing your application if this information is not provided. To do this, you can browse the "research interests" tab on the course finder pages which identifies research leads by subject area.

Alternatively you can:

- Search for an advertised postgraduate research opportunity via our [Doctoral Researchers search engine \(http://www.birmingham.ac.uk/postgraduate/courses/findaphd.aspx\)](http://www.birmingham.ac.uk/postgraduate/courses/findaphd.aspx)
- Browse the school websites. Most schools provide a list of research active staff and their research interests on their website

Immune Regulation

Cellular and molecular interactions in in vivo inducing and regulating immune responses

[Professor Peter Lane](#)

[\(/staff/profiles/iandi/lane-peter.aspx\)](#) [Dr Jorge Caamaño](#)

[\(/staff/profiles/iandi/caamano-jorge.aspx\)](#) [Dr Kai-Michael Toellner](#)

[\(/staff/profiles/iandi/toellner-kai.aspx\)](#) [Dr David Withers](#) [\(/staff/profiles/iandi/withers-david.aspx\)](#)

Thymocyte/stromal cell interactions in T cell development and selection

[Professor Graham Anderson](#)

[\(/staff/profiles/iandi/anderson-graham.aspx\)](#) [Professor Eric Jenkinson](#)

[\(/staff/profiles/iandi/jenkinson-eric.aspx\)](#) [Dr William Jenkinson](#)

[\(/staff/profiles/iandi/jenkinson-william.aspx\)](#) [Dr Nick Jones](#) [\(/staff/profiles/iandi/jones-nick.aspx\)](#)

Chemokine regulation of immune responses

[Professor Antal Rot](#) [\(/staff/profiles/iandi/rot-antal.aspx\)](#)

T cell differentiation and regulation in autoimmune diabetes

[Dr Lucy Walker](#) [\(/staff/profiles/iandi/walker-lucy.aspx\)](#)

Molecular and cellular biology of T cell regulation

[Professor Dave Sansom](#) [\(/staff/profiles/iandi/sansom-david.aspx\)](#)

Immune regulation for bacterial infection

[Professor Adam Cunningham](#)

[\(/staff/profiles/iandi/cunningham-adam.aspx\)](#) [Dr Calman MacLennan](#)

[Dr David Lammas](#) [\(/staff/profiles/iandi/lammas-david.aspx\)](#)

Clinical and diagnostic immunology

[Professor Mark Drayson](#)

[\(/staff/profiles/iandi/draysen-mark.aspx\)](#) [Dr Mark Cobbold](#)

[Dr Sylvie Freeman](#) [\(/staff/profiles/iandi/freeman-sylvie.aspx\)](#)

Inflammation and Inflammatory Disease

Inflammatory liver disease

[Professor David Adams](#)

[\(/staff/profiles/iandi/adams-david.aspx\)](#) [Dr Patricia Lalor](#)

[\(/staff/profiles/iandi/lalor-patricia.aspx\)](#) [Dr Simon Afford](#)

[Dr Gideon Hirshfield](#)

[\(/staff/profiles/iandi/hirschfield-gideon.aspx\)](#) **Dr Ye Oo**

[\(/staff/profiles/iandi/Oo-Ye.aspx\)](#) **Dr Shishir Shetty**

Dr Zania Stamatakis

Hepatitis C immunobiology

Professor Jane McKeating

[\(/staff/profiles/iandi/mckeating-jane.aspx\)](#) **Dr Peter Balfe** [\(/staff/profiles/iandi/balfe-peter.aspx\)](#)

Inflammatory joint disease

Professor Chris Buckley

[\(/staff/profiles/iandi/buckley-christopher.aspx\)](#) **Professor Andy Clark**

[\(/staff/profiles/iandi/clark-andy.aspx\)](#) **Dr Steve Young**

[\(/staff/profiles/iandi/young-stephen.aspx\)](#) **Dr Karim Raza**

[\(/staff/profiles/iandi/raza-karim.aspx\)](#) **Dr Dagmar Scheel Toellner**

[\(/staff/profiles/iandi/scheeltoellner-dagmar.aspx\)](#) **Dr Francesca Barone**

[\(/staff/profiles/iandi/barone-francesca.aspx\)](#) **Dr Andrew Filer**

[\(/staff/profiles/iandi/filer-andrew.aspx\)](#) **Dr Ben Fisher**

[\(/staff/profiles/iandi/fisher-benjamin.aspx\)](#) **Dr Helen McGettrick**

[\(/staff/profiles/iandi/mcgettrick-helen.aspx\)](#) **Dr Paolo de Pablo** [\(/staff/profiles/iandi/depablo-paola.aspx\)](#)

Immunosenescence and chronic inflammation

Professor Janet Lord

[\(/staff/profiles/iandi/lord-janet.aspx\)](#) Systemic autoimmune rheumatic diseases – systemic lupus erythematosus

Dr Caroline Gordon

[\(/staff/profiles/iandi/gordon-caroline.aspx\)](#)

Mechanisms of dysregulated neutrophil and lymphocyte function during pathogenesis of autoimmune renal disease, particularly vasculitis

Professor Lorraine Harper

[\(/staff/profiles/iandi/harper-lorraine.aspx\)](#) **Dr Matt Morgan**

[\(/staff/profiles/iandi/morgan-matthew.aspx\)](#)

The involvement of lymphocytes, cytokines and chemokines in uveitis (inflammatory eye disease)

Professor Philip Murray

[\(/staff/profiles/iandi/murray-philip.aspx\)](#) Infectious and immune-mediated ocular surface diseases

Miss Saaeha Rauz

[\(/staff/profiles/iandi/rauz-saaeha.aspx\)](#) Inflammation at sites of immune privilege; the role of pathogenic and regulatory T cells

Dr S John Curnow

[\(/staff/profiles/iandi/curnow-john.aspx\)](#) **Dr Graham Wallace**

[\(/staff/profiles/iandi/wallace-graham.aspx\)](#)

Stem Cell Biology and Gene Regulation

Transcriptional regulation of adult and embryonic stem cells in health and disease

Professor Jon Frampton

[\(/staff/profiles/iandi/frampton-jon.aspx\)](#) **Dr Padma-Sheela Jayaraman**

[\(/staff/profiles/iandi/jayaraman-padmasheela.aspx\)](#) **Dr Paloma Garcia**

[\(/staff/profiles/iandi/garcia-paloma.aspx\)](#) Stem cells and liver disease

Dr Phil Newsome

[\(/staff/profiles/iandi/newsome-philip.aspx\)](#)

Epigenetic mechanisms of gene regulation

Professor Peter Cockerill

[\(/staff/profiles/iandi/cockerill-peter.aspx\)](#) **Dr Laura O'Neill**

Dr Karl Nightingale [\(/staff/profiles/iandi/nightingale-karl.aspx\)](#)

Chromatin remodelling and transcriptional regulation of Drosophila blood development

Dr Paul Badenhorst [\(/staff/profiles/iandi/badenhorst-paul.aspx\)](#)

Control mechanisms in angiogenesis

Professor Roy Bicknell

[\(/staff/profiles/iandi/bicknell-roy.aspx\)](#) **Dr Victoria Heath**

[\(/staff/profiles/iandi/heath-victoria.aspx\)](#)

Regulation of haematopoietic cell differentiation

Dr Geoffrey Brown [\(/staff/profiles/iandi/brown-geoffrey.aspx\)](#)

Bacterial Infections, Pathogenesis and Antibiotic Resistance

Antimicrobial action and resistance

Professor Laura Piddock

[\(/staff/profiles/iandi/piddock-laura.aspx\)](#) **Professor Tim Mitchell**

[\(/staff/profiles/iandi/mitchell-tim.aspx\)](#) **Professor Peter Hawkey**

[\(/staff/profiles/iandi/hawkey-peter.aspx\)](#) **Professor Ian Henderson**

[\(/staff/profiles/iandi/henderson-ian.aspx\)](#) **Dr Mark Webber**

[\(/staff/profiles/iandi/webber-mark.aspx\)](#) **Dr Vassiliy Bavro**

[\(/staff/profiles/iandi/bavro-vassiliy.aspx\)](#)

Immune responses to infection and vaccine development

Professor Adam Cunningham

[\(/staff/profiles/iandi/cunningham-adam.aspx\)](#) Dr Calman MacLennan

Professor Ian Henderson

[\(/staff/profiles/iandi/henderson-ian.aspx\)](#)

Mechanisms of bacterial pathogenesis

Professor Ian Henderson

[\(/staff/profiles/iandi/henderson-ian.aspx\)](#) **Professor Laura Piddock**

[\(/staff/profiles/iandi/piddock-laura.aspx\)](#) Nosocomial infections

Professor Peter Hawkey

[\(/staff/profiles/iandi/hawkey-peter.aspx\)](#) **Professor Laura Piddock**

[\(/staff/profiles/iandi/piddock-laura.aspx\)](#)

Related research

- [Research in Immunity and Infection \(/schools/immunity-infection/research/index.aspx\)](#)

Employability

Following graduation, Postgraduate Researchers in the College MDS gain employment in a variety of areas though with a majority continuing in research, mostly in Academia but also in the Health, Pharmaceutical, and Biotechnology sectors. Others pursue careers in Education, Publishing, Intellectual Property Protection, Technology Innovation, Business, and more besides.

[Find out more about where our postgraduate students go \(/Documents/college-mds/courses/postgraduate/employability-info/employabilityinfo-ii-jan2014.pdf\)](#)

[Privacy](#) | [Legal](#) | [Cookies and cookie policy](#) | [Accessibility](#) | [Site map](#) | [Website feedback](#) | [Charitable information](#)

© University of Birmingham 2015

