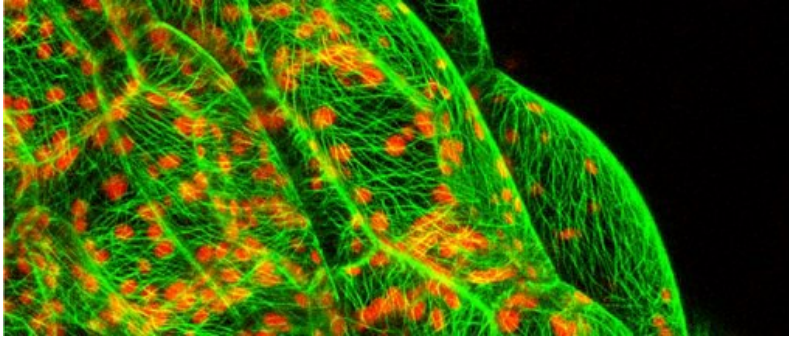


## Plant developmental cell biology



into the following areas.

Included within the area of plant developmental cell biology is research

- Plant development and evolution ([Dr Juliet Coates \(/staff/profiles/biosciences/coates-juliet.aspx\)](/staff/profiles/biosciences/coates-juliet.aspx))
- Targets and mechanisms involved in the self-incompatibility response in Papaver rhoeas pollen ([Professor Noni Franklin-Tong \(/staff/profiles/biosciences/franklin-tong-noni.aspx\)](/staff/profiles/biosciences/franklin-tong-noni.aspx))
- Infection processes of fungal plant pathogens; composition and functions of fungal cell surfaces ([Dr Jon Green \(/staff/profiles/biosciences/green-jon.aspx\)](/staff/profiles/biosciences/green-jon.aspx))