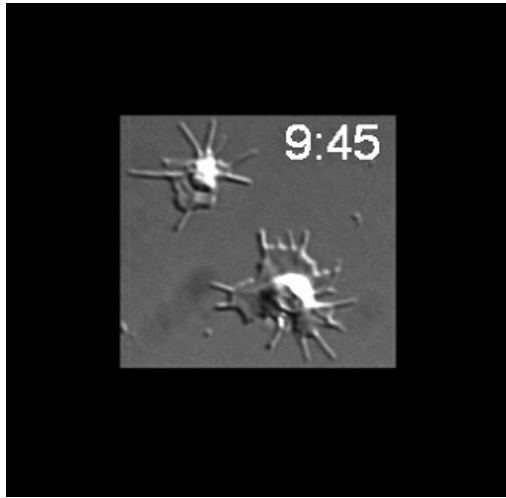


## The molecular basis of platelet activation

Steve Watson's group combines the use of molecular and physiological based assays to dissect the events that underlie activation of blood platelets by surface receptors.

This includes the use of real-time video imaging to monitor changes in platelet morphology following adhesion to a surface; real-time, fluorescence-based, intravital microscopy to monitor the events that underlie clot formation at arterial rates of flow both on an extracellular matrix protein in vitro and in a laser-damaged vascular bed in vivo; and use of Fluorescence Resonance Energy Transfer (FRET) and related procedures to monitor protein-protein interactions in a living cell.



### Contact

Professor Steve Watson, Centre for Cardiovascular Sciences, Division of Medical Sciences, Institute of Biomedical Research

Email: [s.p.watson@bham.ac.uk](mailto:s.p.watson@bham.ac.uk) (<mailto:s.p.watson@bham.ac.uk>)

Tel: 0121 414 6514