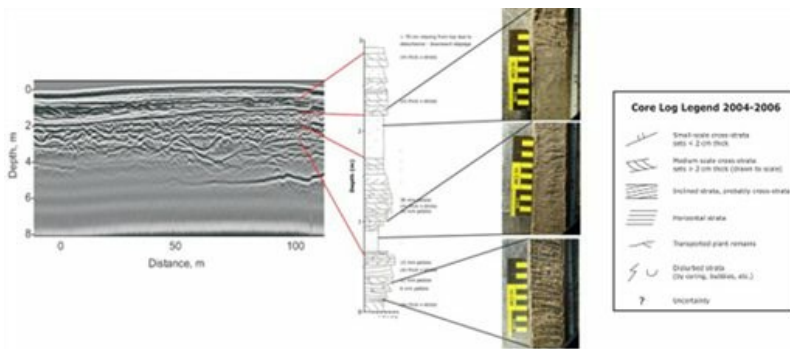


Cores

Approximately 65 vibra- and suction cores were taken between 2004 and 2006 for the purposes of ground truthing the radar data and to provide detail on sedimentary structures below the resolution of the radar.



Maximum core recovery was down to ~ 4m depth, cores were cut along their length and epoxy resin used to provide peels which were then logged. Samples were also taken for subsequent grain size analysis.



Core comparison with GPR at 0,100 Bar E (2006) - Note difference in resolution between GPR and core