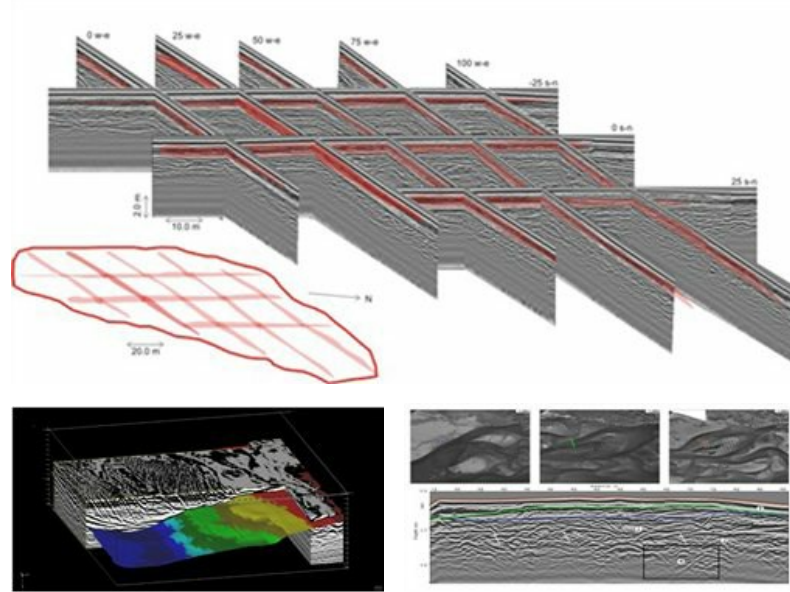


Ground penetrating radar

Well over 60km of radar data has been collected since the initial geophysics field season in 2000.

Data has been collected with a Sensors&Software system and 200MHz antennae. Most data has been collected in a grid form to gain a better understanding of the 3D nature of the alluvial architecture. We have also collected some true 3D datasets to gain unrivalled resolution of the internal structure of bars within the river.



One of the most novel aspects of our data collection strategy is that all lines have been located using DGPS, allowing us to relocate the exact same survey lines each year. We have thus been able to repeat survey lines and quantify how deposits have evolved through time.