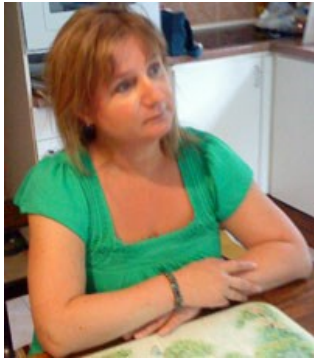


Rebecca Wood

Doctoral Researcher

www.birmingham.ac.uk/rebecca-wood (<http://www.birmingham.ac.uk/rebecca-wood>)



Current Status

First Year, part-time

Research Topic

Can children with autism in mainstream primary schools be fully included in the curriculum?

Research Summary

Examining the extent to which children with autism who attend mainstream primary schools can be included in the curriculum in order to be more fully included in school. Looking at the factors which might support or preclude this such as aspects of autism, current inclusive/exclusive practices in schools, school environments, the nature of mainstream curricula and assessment programmes, as well as parental and professional expectations. Also considering the relevance and impact of this issue on the well-being of the child and desirable educational outcomes for children with autism.

Research Interests

- Autism
- Inclusion
- Education
- Disability rights
- Children's rights

Research Supervisors

[Dr Karen Guldborg](/staff/profiles/education/guldborg-karen.aspx) and [Dr Kerstin Wittmeyer](/staff/profiles/education/wittmeyer-kerstin.aspx)

Contact Details

Email: RXW254@bham.ac.uk