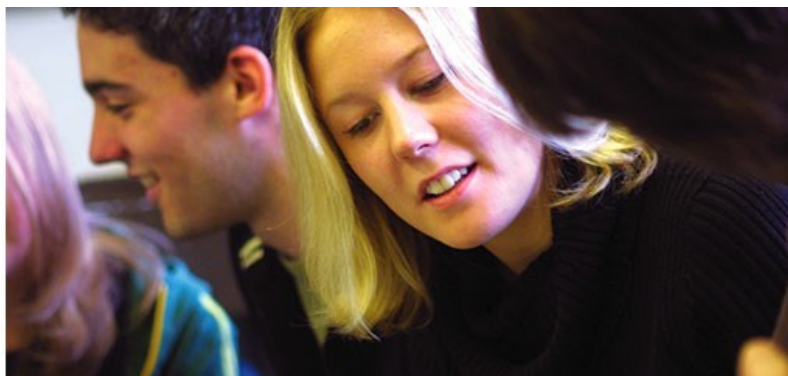


## LLB Law of Health and Safety at Work



Module leader: [George Applebey \(/staff/profiles/law/applebey-george.aspx\)](/staff/profiles/law/applebey-george.aspx)

### Module description:

On the basis of a detailed examination of primary law, secondary legislation and case law: After the history of employer's liability, Part 1 of the course is based upon criminal law; strict liability and regulatory criminal offences; and Health and Safety at Work Act 1974; the role of the Health and Safety Executive and enforcement; The European Framework directive and implementing British Regulations; Corporate Manslaughter and Corporate Homicide Act 2007.

The second part of the course is largely aspects of Tort Law. Employer's liability in Negligence at common law; the tort of breach of statutory duty; selected case studies on certain types of claim, e.g. Occupational stress and claims arising from exposure to asbestos, including the debate over pleural

plaques; Employment law aspects of health and safety, worker participation, etc; the European Union's role in the working environment; the Working Time Regulations 1999; the Human Rights Act 1998 and health and safety law.