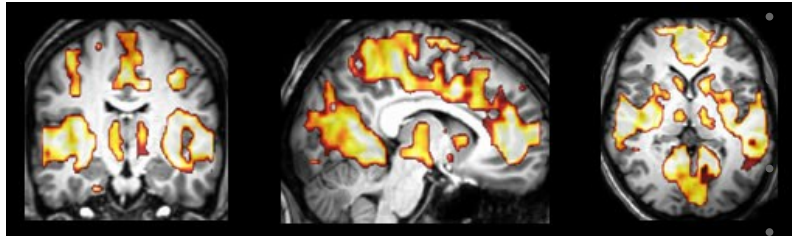


## Current projects



Cortical hyperexcitability and the out of body experience in non-clinical populations (Funded by the Leverhulme Trust, 2012 - 2015)

Neurocognitive Correlates of the Out-of-Body Experience and Kindred Hallucinations of Embodiment and the 'Self' (funded by the Bial Foundation, 2010 - 2013)

Egocentric and exocentric perspective-taking and the out-of body experience (funded by the Bial Foundation)

Visual dysfunction, visual stress and cortical hyperexcitability in migraine sufferers (with and without aura)

- How processes of embodied cognition might be related to hallucinatory disembodied experiences of the 'self'
- Neural and psychophysiological signs of cortical suppression in depersonalization / derealization / Schizotypy, in the non-clinical population (Funded by the Bial Foundation, 2013 - 2015)
- Emotion and cognition: Aberrant emotional processing underling instances of anomalous experience in the non-clinical population? Exploring the parameters of variability in psychophysiological factors and their association with anomalous experiences