

Chelsea Slater

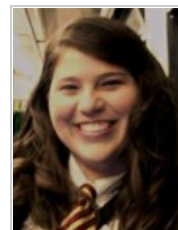
Doctoral Researcher

[School of Psychology \(/schools/psychology/index.aspx\)](/schools/psychology/index.aspx)

Contact details

Email cls011@bham.ac.uk (<mailto:cls011@bham.ac.uk>)

University of Birmingham
Edgbaston
Birmingham
B15 2TT
UK



About

Title of PhD: Detecting Serial Sex Offenders

Supervisor: [Dr Jessica Woodhams \(/staff/profiles/psychology/woodhams-jessica.aspx\)](/staff/profiles/psychology/woodhams-jessica.aspx)

Chelsea's current research is using case linkage techniques to study serial sexual offenders. There is an emphasis on the practical "real world" applications of case linkage.

Qualifications

B.A. in Psychology with Honors and Distinction – University of Michigan (USA)

Biography

Chelsea earned a B.A. in Psychology (with Honors and Distinction) from the University of Michigan in 2010. While there she worked as a Research Assistant for 3 years in Social Psychology (studying romantic relationships). She completed a thesis in her final year that investigated gender stereotypes of careers and their impact on criminal punishment assessment.

She has interned at the Office of the Attorney General (in the Metropolitan Police Department) in Washington DC, and at the Cincinnati's Children's Hospital. She has also worked for various survey research companies.

Research

Research interests

Investigative Psychology, Sexual and Serial Offending, Case Linkage, Offender Profiling

Publications

Presentations

Crime Linkage of Serial Stranger Rapes in the UK . Presented at PsyPAG Conference (Bangor, 2011)

Crime Linkage of Serial Stranger Rapes in the UK . Presented at Division of Forensic Psychology Conference (Portsmouth, 2011). [Poster]

Do Gender Incongruent Careers Adversely Influence Criminal Punishment Assessment? Presented at the Psychology Research Forum University of Michigan (Ann Arbor, 2010). [Poster]