

Academic Staff

[Head of School \(#HeadofSchool\)](#) | [Professor \(#Professor\)](#) | [Reader \(#Reader\)](#) | [Senior Lecturer \(#SeniorLecturer\)](#) | [Lecturer \(#Lecturer\)](#) | [Birmingham Fellow \(#BirminghamFellow\)](#) | [Clinical Lecturer \(#ClinicalLecturer\)](#) | [Postdoctoral Researcher \(/schools/psychology/people/postdoctoral-researchers.aspx\)](#) | [Honorary Academic \(#HonoraryAcademic\)](#) | [Academic Related \(#AcademicRelated\)](#)

Or see [A-Z listing \(/schools/psychology/people/people-a-z.aspx\)](#)

Head of School

[Professor Kim Shapiro \(/schools/psychology/people/profile.aspx?ReferenceId=46352\)](/schools/psychology/people/profile.aspx?ReferenceId=46352)

Professor and Chair of Cognitive Neuroscience
Head of School

Professor Shapiro in collaboration with other colleagues published the first paper on the 'attentional blink' phenomenon, which has attracted great interest on the part of many scientists. The original publication has been cited over 1000 times and approximately 500 reports on the same topic have followed from it. He employs a wide range of neuroscience approaches and tools in his ...

Telephone [+44 \(0\)121 414 4930 \(tel:+44 121 414 4930\)](tel:+441214144930)

Email [k.i.shapiro@bham.ac.uk \(mailto:k.i.shapiro@bham.ac.uk\)](mailto:k.i.shapiro@bham.ac.uk)



Professor

[Professor Ian Apperly \(/schools/psychology/people/profile.aspx?ReferenceId=8818\)](/schools/psychology/people/profile.aspx?ReferenceId=8818)

Professor of cognition and development
Director of Research for the School of Psychology

Ian Apperly is an experimental psychologist, and his main research interest is in "mindreading" – the ability to take other people's perspectives. He is the author of a recent book entitled "Mindreaders: The cognitive basis of theory of mind".

Telephone [0121 414 3339 \(tel:+44 121 414 3339\)](tel:+441214143339)

Email [i.a.apperly@bham.ac.uk \(mailto:i.a.apperly@bham.ac.uk\)](mailto:i.a.apperly@bham.ac.uk)



[Professor Anthony Beech \(/schools/psychology/people/profile.aspx?ReferenceId=9361\)](/schools/psychology/people/profile.aspx?ReferenceId=9361)

Professor in Criminological Psychology
Head of the Centre for Forensic and Criminological Psychology

Professor Anthony Beech is Head of the **Centre for Forensic and Criminological Psychology** (</research/activity/psychology/forensic/cfcp/index.aspx>) at the University of Birmingham, UK. He has authored over 150 peer-reviewed articles, 40 book chapters and six books in the area of forensic science/criminal justice. In 2009 he received the Significant Achievement Award from the Association for the Treatment of Sexual Abusers in Dallas, and the Senior ...

Telephone [+44 \(0\)121 414 7215 \(tel:+44 121 414 7215\)](tel:+441214147215)

Email [a.r.beech@bham.ac.uk \(mailto:a.r.beech@bham.ac.uk\)](mailto:a.r.beech@bham.ac.uk)



[Professor Howard Bowman \(/schools/psychology/people/profile.aspx?ReferenceId=69922\)](/schools/psychology/people/profile.aspx?ReferenceId=69922)

Professor of Cognitive Neuroscience

Professor Bowman applies the methods of Cognitive Neuroscience, especially EEG and Neural Modelling, to understanding a spectrum of Cognitive phenomena, including conscious perception, temporal attention and subliminal search. Much of his work focuses on verifying the simultaneous Type/ Serial Token theory of temporal attention and working memory encoding, which he developed with Brad ...

Email [bowmanh@adf.bham.ac.uk \(mailto:bowmanh@adf.bham.ac.uk\)](mailto:bowmanh@adf.bham.ac.uk)



[Professor Alex Copello \(/schools/psychology/people/profile.aspx?ReferenceId=71866\)](/schools/psychology/people/profile.aspx?ReferenceId=71866)

Professor of Addiction Research/Consultant Clinical Psychologist

Professor Copello's research has led to major impacts on addiction treatment in the UK in recent years. He was Principal Investigator in the MRC funded UK Alcohol Treatment Trial, the largest trial of alcohol treatments conducted in the UK that informs effective and cost effective delivery of psychosocial interventions for alcohol problems. He led the development of a social and family ...

Telephone [+44 \(0\) 121 414 7414 \(tel:+44 121 414 7414\)](tel:+441214147414)

Email [a.g.copello@bham.ac.uk \(mailto:a.g.copello@bham.ac.uk\)](mailto:a.g.copello@bham.ac.uk)



[Professor Steven J. Luck \(/schools/psychology/people/profile.aspx?ReferenceId=71865\)](/schools/psychology/people/profile.aspx?ReferenceId=71865)

Professor in Cognitive Neuroscience

Dr Steven Luck is an expert on attention and working memory, both in typical individuals and in people with mental health conditions such as schizophrenia. He is also one of the world's leading experts on the use of brain waves to study the human mind and brain.





[Professor Chris Miall \(/schools/psychology/people/profile.aspx?Referenceld=14488\)](/schools/psychology/people/profile.aspx?Referenceld=14488)

Professor of Motor Neuroscience
College Director of Research

Professor Miall has been studying sensory motor control for about 30 years, from his PhD in locusts, to crayfish, primates and for most of the 15 years, working on human motor control. He is particularly interested in the role of the cerebellum, in motor learning and in predictive control.

His research team website is: <http://prism.bham.ac.uk/index.html> (<http://prism.bham.ac.uk/index.html>)

Telephone [+44 \(0\)121 41 42867](tel:+441214142867) (tel:+44 121 41 42867)

Email r.c.miall@bham.ac.uk (mailto:r.c.miall@bham.ac.uk)



[Professor Uta Noppeney \(/schools/psychology/people/profile.aspx?Referenceld=29516\)](/schools/psychology/people/profile.aspx?Referenceld=29516)

Chair in Computational Neuroscience

Professor Noppeney investigates how the human brain integrates information across the senses to interact effectively with our complex dynamic environment. To characterize the neural and computational mechanisms the **Computational Cognitive Neuroimaging Group** (<http://www.birmingham.ac.uk/research/activity/psychology/comp-cog-neuro/index.aspx>) combines psychophysics, functional imaging (fMRI & EEG/MEG) and computational modelling.



...
Email u.noppeney@bham.ac.uk (mailto:u.noppeney@bham.ac.uk)

[Professor Chris Oliver \(/schools/psychology/people/profile.aspx?Referenceld=15238\)](/schools/psychology/people/profile.aspx?Referenceld=15238)

Professor of Neurodevelopmental Disorders

Chris Oliver is Professor of Neurodevelopmental Disorders and Director of the Cerebra Centre for Neurodevelopmental Disorders. His main research interests are behavioural, cognitive and emotional disorders in people with severe intellectual disability, genetic syndromes and autism spectrum conditions.

Telephone [+44 \(0\)121 414 4909](tel:+441214144909) (tel:+44 121 414 4909)

Email c.oliver@bham.ac.uk (mailto:c.oliver@bham.ac.uk)



[Professor Jane E. Raymond \(/schools/psychology/people/profile.aspx?Referenceld=48512\)](/schools/psychology/people/profile.aspx?Referenceld=48512)

Professor of Visual Cognition

Professor Raymond is a visual perception/cognition specialist with a wide range of interests in how humans use and respond to complex visual information. She conducted the seminal work on the "Attention Blink", a finding that launched intensive interest in labs around the world on how selective attention operates over time. Her work has included studies visual attention across ...

Telephone [+44 \(0\)121 414 4912](tel:+441214144912) (tel:+44 121 414 4912)

Email j.raymond@bham.ac.uk (mailto:j.raymond@bham.ac.uk)



[Professor Alan Wing \(/schools/psychology/people/profile.aspx?Referenceld=10638\)](/schools/psychology/people/profile.aspx?Referenceld=10638)

Professor of Human Movement

Telephone [+44 \(0\) 121 414 7954](tel:+441214147954) (tel:+44 121 414 7954)

Email a.m.wing@bham.ac.uk (mailto:a.m.wing@bham.ac.uk)



[Professor Stephen Wood \(/schools/psychology/people/profile.aspx?Referenceld=8875\)](/schools/psychology/people/profile.aspx?Referenceld=8875)

Professor of Adolescent Brain Development and Mental Health

My research aims to understand the health paradox of adolescence - the years between 12 and 25 are a time of great physical fitness, yet this is the period during which 75% of all mental disorders have their onset. Why should this be the case? Clearly changes in the brain are likely culprits, but how they interact with genetic and environmental factors to produce illness is unclear.

...
Telephone [0121 4144917](tel:+441214144917) (tel:+44 121 4144917)

Email s.j.wood@bham.ac.uk (mailto:s.j.wood@bham.ac.uk)



[Dr Andrew Bagshaw \(/schools/psychology/people/profile.aspx?Referenceld=5567\)](/schools/psychology/people/profile.aspx?Referenceld=5567)

Reader in Imaging Neuroscience
Director of the Birmingham University Imaging Centre

Dr Bagshaw's main interest is in developing and applying non-invasive neuroimaging methods to questions in clinical and behavioural neuroscience. Current work in the **Multimodal Integration Group (MIG)** (</research/activity/psychology/mig/index.aspx>) focuses on using EEG-fMRI to understand the influence of ongoing brain activity on evoked and behavioural responses, and to examine the localisation and functional significance of ...

Telephone **+44 (0)121 414 3683** (tel:+44 121 414 3683)

Email a.p.bagshaw@bham.ac.uk (mailto:a.p.bagshaw@bham.ac.uk)



[Dr Sarah Beck \(/schools/psychology/people/profile.aspx?Referenceld=15092\)](/schools/psychology/people/profile.aspx?Referenceld=15092)

Reader in Cognitive Development



(</university/colleges/les/research-gallery/sarah-beck.aspx>) My research examines children's and adults' thinking about time and knowledge. I am interested in how children become able to speculate about events in the past and future and how they handle uncertainty, and how adults' apparently sophisticated thinking in these areas is often irrational. More information about my research and my lab can be found at www.sarahruthbeck.net ... (<http://www.sarahruthbeck.net>)

Telephone **+44 (0)121 41 44902** (tel:+44 121 41 44902)

Email s.r.beck@bham.ac.uk (mailto:s.r.beck@bham.ac.uk)



[Dr Jackie Blissett \(/schools/psychology/people/profile.aspx?Referenceld=5520\)](/schools/psychology/people/profile.aspx?Referenceld=5520)

Reader in Childhood Eating Behaviour

Jackie is an applied developmental psychologist whose specific interest is in parenting and childhood eating behaviour and obesity.

Telephone **+44 (0)121 414 3340** (tel:+44 121 414 3340)

Email j.blissett@bham.ac.uk (mailto:j.blissett@bham.ac.uk)



[Dr Suzanne Higgs \(/schools/psychology/people/profile.aspx?Referenceld=10174\)](/schools/psychology/people/profile.aspx?Referenceld=10174)

Reader in the Psychobiology of Appetite



(</university/colleges/les/research-gallery/suzanne-higgs.aspx>) I am a research psychologist interested in the study of motivated behaviours like eating and drug taking.

Telephone **+44 (0) 121 41 44907** (tel:+44 121 41 44907)

Email s.higgs.1@bham.ac.uk (mailto:s.higgs.1@bham.ac.uk)



[Dr Linda Wheeldon \(/schools/psychology/people/profile.aspx?Referenceld=10567\)](/schools/psychology/people/profile.aspx?Referenceld=10567)

Reader in Psycholinguistics

Telephone **+44 (0) 121 414 7048** (tel:+44 121 414 7048)

Email l.r.wheeldon@bham.ac.uk (mailto:l.r.wheeldon@bham.ac.uk)



Senior Lecturer

[Dr Jason Braithwaite \(/schools/psychology/people/profile.aspx?Referenceld=10616\)](/schools/psychology/people/profile.aspx?Referenceld=10616)

Senior Lecturer in Cognitive Psychology & Brain Science

Dr Jason Braithwaite is a Senior Lecturer in Cognitive Psychology and Brain Science at the Behavioural Brain Sciences Centre, School of Psychology, University of Birmingham. He heads the **Selective Attention & Awareness Laboratory (SAAL)** (</schools/psychology/labs/saal/index.aspx>) which has been supported with previous funding from the Leverhulme Trust, ESRC, BBSRC, RCUK, The Bial Foundation. He ...

Email j.j.braithwaite@bham.ac.uk (mailto:j.j.braithwaite@bham.ac.uk)



[Dr Anke C. Büttner \(/schools/psychology/people/profile.aspx?Referenceld=24063\)](/schools/psychology/people/profile.aspx?Referenceld=24063)

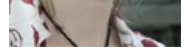
Senior Lecturer in Psychology

Dr Anke Büttner is a psycholinguist and cognitive psychologist interested in the way people make sense of language. She also has an interest in learning and teaching, in particular in the effects of encouraging students to take ownership of the work and in the processes that take place during mentoring relationships.

Telephone **+44 (0)0121 414 4055** (tel:+44 0121 414 4055)



Email a.c.buttner@bham.ac.uk (mailto:a.c.buttner@bham.ac.uk)



[Dr Jonathan Catling \(/schools/psychology/people/profile.aspx?Referenceld=24521\)](/schools/psychology/people/profile.aspx?Referenceld=24521)

Senior Lecturer

Dr Jonathan Catling is a Cognitive Psychologist. His main research interest lies within the field of psycholinguistics, specifically assessing the impact of the 'Age of Acquisition' of language on cognitive functions in later life.

Email j.c.catling@bham.ac.uk (mailto:j.c.catling@bham.ac.uk)



[Dr Louise Dixon \(/schools/psychology/people/profile.aspx?Referenceld=10022\)](/schools/psychology/people/profile.aspx?Referenceld=10022)

Senior Lecturer

Louise specialises in the prevention of interpersonal violence. Her work primarily centres on intimate partner aggression and group and gang related aggression and addresses issues related to aetiology, risk assessment, intervention, primary prevention and policy change. She enjoys an international research profile which positively impacts upon practice, policy and service provision.

Telephone [+44 \(0\)121 414 7218](tel:+441214147218) (tel:+44 121 414 7218)

Email l.dixon.1@bham.ac.uk (mailto:l.dixon.1@bham.ac.uk)



[Dr Catherine Hamilton-Giachritsis \(/schools/psychology/people/profile.aspx?Referenceld=10171\)](/schools/psychology/people/profile.aspx?Referenceld=10171)

Senior Lecturer in Forensic Psychology
Assistant Director, Centre for Forensic and Criminological Psychology

Catherine Hamilton-Giachritsis is an HCPC registered Forensic Psychologist and Clinical Psychologist with an interest in child maltreatment and family violence, including risk assessment, impact of early institutionalisation and long-term outcomes (e.g., psychopathology and/or resilience). She also studies vulnerability to online grooming and impact on young people.

Telephone [+44 \(0\)121 41 44925](tel:+441214144925) (tel:+44 121 41 44925)

Email c.hamilton.1@bham.ac.uk (mailto:c.hamilton.1@bham.ac.uk)

[Dr Peter Hansen \(/schools/psychology/people/profile.aspx?Referenceld=73258\)](/schools/psychology/people/profile.aspx?Referenceld=73258)

[Dr Simon Hanslmayr \(/schools/psychology/people/profile.aspx?Referenceld=70349\)](/schools/psychology/people/profile.aspx?Referenceld=70349)

Senior Lecturer

Dr Simon Hanslmayr is an expert in the role of brain oscillations for human cognition. His research addresses the question of how brain oscillations mediate long-term memory and attention in the human brain.

Telephone [+44\(0\)121 414 6203](tel:+441214146203) (tel:+44 121 414 6203)

Email s.hanslmayr@bham.ac.uk (mailto:s.hanslmayr@bham.ac.uk)



[Dr Dietmar Heinke \(/schools/psychology/people/profile.aspx?Referenceld=10566\)](/schools/psychology/people/profile.aspx?Referenceld=10566)

Senior Lecturer

Dr. Dietmar Heinke teaches statistics at the School of Psychology. His research focuses on interdisciplinary brain research integrating experimental work in psychology with theoretical/computational modeling work. for more information see his [personal webpages \(http://dietmar-heinke.co.uk/\)](http://dietmar-heinke.co.uk/).

He also is a member of the [Centre for Computational Neuroscience and Cognitive Robotics \(CNCR\) \(/research/activity/cncr/index.aspx\)](/research/activity/cncr/index.aspx).

Telephone [+44 \(0\)121 41 44920](tel:+441214144920) (tel:+44 121 41 44920)

Email d.g.heinke@bham.ac.uk (mailto:d.g.heinke@bham.ac.uk)



[Dr Andrea Krott \(/schools/psychology/people/profile.aspx?Referenceld=15232\)](/schools/psychology/people/profile.aspx?Referenceld=15232)

Senior Lecturer

Andrea Krott is psycholinguist who is interested in language acquisition and brain responses to language processing. Many of her studies, carried out in various languages, have focused on how adults and children understand and produce compound words (e.g. "baby bottle"). Her current research concerns children's word learning and language-related brain responses (EEG) in ...

Telephone [+44 \(0\)121 414 4903](tel:+441214144903) (tel:+44 121 414 4903)



Email a.krott@bham.ac.uk (<mailto:a.krott@bham.ac.uk>)



[Dr Michael Larkin \(/schools/psychology/people/profile.aspx?Referenceld=8825\)](/schools/psychology/people/profile.aspx?Referenceld=8825)

Senior Research Tutor for Clinical Psychology
Senior Lecturer in Psychology
Course Director MRes Clinical Psychology

My main roles involve teaching, supporting and supervising research on the clinical psychology doctorate, and organising the MRes Clinical Psychology course. I also supervise PhD students using qualitative research methods to explore experiences of psychological distress, recovery, relatedness and caring. My research interests are in these same areas.

Telephone [+44 \(0\)121 41 46036](tel:+441214146036) (tel:+44 121 41 46036)

Email m.larkin@bham.ac.uk (<mailto:m.larkin@bham.ac.uk>)

[Dr Jonathan Lee \(/schools/psychology/people/profile.aspx?Referenceld=8856\)](/schools/psychology/people/profile.aspx?Referenceld=8856)

Senior Lecturer

I am a behavioural neuroscientist primarily interested in the mechanisms and functions of memory processes. In particular, I currently study the phenomenon of memory reconsolidation, which may have applications in the understanding of and treatment of conditions such as post-traumatic stress disorder and drug addiction.

Telephone [+44 \(0\)121 414 2607](tel:+441214142607) (tel:+44 121 414 2607)

Email j.l.c.lee@bham.ac.uk (<mailto:j.l.c.lee@bham.ac.uk>)



[Monica Lloyd \(/schools/psychology/people/profile.aspx?Referenceld=73276\)](/schools/psychology/people/profile.aspx?Referenceld=73276)

Senior Lecturer in Forensic Psychology

Monica Lloyd joined the University part time on retirement from the National Offender Management Service. She helped to establish the new combined forensic and clinical doctorate training and her specialism is the Psychology of Extremism and Terrorism. She continues to offer consultancy to the Office for Security and Counter-Terrorism in the UK and to the International Centre for Counter ...

Telephone [+44 \(0\)1242 695788](tel:+441242695788) (tel:+44 1242 695788)

Email m.lloyd.1@bham.ac.uk (<mailto:m.lloyd.1@bham.ac.uk>)

[Dr Ian Mitchell \(/schools/psychology/people/profile.aspx?Referenceld=8859\)](/schools/psychology/people/profile.aspx?Referenceld=8859)

Senior Lecturer

Dr. Ian Mitchell is interested in the neurobiological basis of offending behaviour and some psychiatric conditions.

Telephone [0121 414 7197](tel:+441214147197) (tel:+44 121 414 7197)

Email i.j.mitchell@bham.ac.uk (<mailto:i.j.mitchell@bham.ac.uk>)

[Dr Andrew Olson \(/schools/psychology/people/profile.aspx?Referenceld=10252\)](/schools/psychology/people/profile.aspx?Referenceld=10252)

Senior Lecturer; Head of Quality

Andrew Olson is a neuropsychologist who is interested in cognition and its various forms of breakdown and especially in the organization of language in the brain. He works with patient volunteers with aphasia, children, healthy adults and members of the deaf community.

Telephone [+44 \(0\)121 414 3328](tel:+441214143328) (tel:+44 121 414 3328)

Email a.l.o.olson@bham.ac.uk (<mailto:a.l.o.olson@bham.ac.uk>)



[Dr Kimberly Quinn \(/schools/psychology/people/profile.aspx?Referenceld=8865\)](/schools/psychology/people/profile.aspx?Referenceld=8865)

Senior Research Fellow in Psychology

Kimberly Quinn is a social-cognitive psychologist with interests in face processing (e.g., social categorisation, emotion recognition), self-other representation (e.g., behavioural synchrony), and moral judgement (e.g., moral certainty).

More information may be found at her personal webpage: <http://www.kimberlyquinn.net/> (<http://www.kimberlyquinn.net/>).

Email k.quinn@bham.ac.uk (<mailto:k.quinn@bham.ac.uk>)



[Dr Andrew Schofield \(/schools/psychology/people/profile.aspx?Referenceld=8870\)](/schools/psychology/people/profile.aspx?Referenceld=8870)

Senior Lecturer

Andrew Schofield's primary research is on functional aspects of the visual perceptio with an emphasis on textures, surfaces and shape. He also has interests in the effects of ageing on visual perception and the role of cortical hyper-excitability in abnormal visual functioning. He also builds computational models of human vision and designs computer vision algorithms.

Telephone [+44 \(0\)121 41 45644](tel:+441214145644) (tel:+44 121 41 45644)





[Dr Biza Stenfert Kroese \(/schools/psychology/people/profile.aspx?Referenceld=8871\)](/schools/psychology/people/profile.aspx?Referenceld=8871)

Senior lecturer and consultant clinical psychologist

I have been a member of staff in the School of Psychology since 1988 and have combined my academic post with clinical psychology practice and managerial responsibilities in the NHS.

Telephone [+44 \(0\)121 41 44915](tel:+441214144915) (tel:+44 121 41 44915)

Email b.stenfert-kroese@bham.ac.uk (mailto:b.stenfert-kroese@bham.ac.uk)



[Dr Amanda Wood \(/schools/psychology/people/profile.aspx?Referenceld=8876\)](/schools/psychology/people/profile.aspx?Referenceld=8876)

Senior Lecturer

Telephone [+44 0121 414 3338](tel:+441214143338) (tel:+44 121 414 3338)

Email a.g.wood@bham.ac.uk (mailto:a.g.wood@bham.ac.uk)



[Dr Jessica Woodhams \(/schools/psychology/people/profile.aspx?Referenceld=10639\)](/schools/psychology/people/profile.aspx?Referenceld=10639)

Senior Lecturer in Forensic Psychology

Jessica is a chartered psychologist and an HCPC registered forensic psychologist. Her primary areas of research are policing and sexual offending. She is the founder of the international academic-practitioner C-LINK network (Crime Linkage International Network, www.crimelinkage.org (<http://www.crimelinkage.org>)).

Telephone [0121 414 6937](tel:+441214146937) (tel:+44 121 414 6937)

Email j.woodhams@bham.ac.uk (mailto:j.woodhams@bham.ac.uk)



Lecturer

[Dr Ulrik Beierholm \(/schools/psychology/people/profile.aspx?Referenceld=22812\)](/schools/psychology/people/profile.aspx?Referenceld=22812)

Lecturer in Computational Neuroscience

Dr Beierholm is a computational neuroscientist researching issues on theoretical models of information processing at the behavioural level, i.e. how perceptual stimuli and cognitive instructions lead to human decisions and actions.

Dr. Beierholm is part of the [Centre for Computational Neuroscience and Cognitive Robotics \(CNCR\)](http://www.birmingham.ac.uk/research/activity/cncr/index.aspx) (<http://www.birmingham.ac.uk/research/activity/cncr/index.aspx>).



Telephone [+44 \(0\)121 414 5534](tel:+441214145534) (tel:+44 121 414 5534)


Email u.beierholm@bham.ac.uk (mailto:u.beierholm@bham.ac.uk)

[Dr Julie Christian \(/schools/psychology/people/profile.aspx?Referenceld=73263\)](/schools/psychology/people/profile.aspx?Referenceld=73263)

Email j.n.christian@bham.ac.uk (mailto:j.n.christian@bham.ac.uk)

[Dr Massimiliano \(Max\) Di Luca \(/schools/psychology/people/profile.aspx?Referenceld=22959\)](/schools/psychology/people/profile.aspx?Referenceld=22959)

Lecturer in Computational Neuroscience

 (</university/colleges/les/research-gallery/max-di-luca.aspx>) Dr Di Luca investigates the mechanisms of human perception using psychophysical methods and computational modeling. His research goal is to understand how humans integrate multiple sensory signals and accumulate information over time to generate a percept.

Dr Di Luca is part of the [Centre for Computational Neuroscience and Cognitive Robotics \(CNCR\)](http://www.birmingham.ac.uk/research/activity/cncr/index.aspx) ([/research/activity/cncr/index.aspx](http://www.birmingham.ac.uk/research/activity/cncr/index.aspx)) and Director of ...



Telephone [+44 \(0\)121 414 5526](tel:+441214145526) (tel:+44 121 414 5526)

Email m.diluca@bham.ac.uk (mailto:m.diluca@bham.ac.uk)

[Dr Steven Frisson \(/schools/psychology/people/profile.aspx?Referenceld=10620\)](/schools/psychology/people/profile.aspx?Referenceld=10620)

Lecturer

Telephone [0121 414 8202 \(tel:+44 121 414 8202\)](tel:+441214148202)

Email [s.frisson@bham.ac.uk \(mailto:s.frisson@bham.ac.uk\)](mailto:s.frisson@bham.ac.uk)

[Dr Christopher Jones \(/schools/psychology/people/profile.aspx?Referenceld=73262\)](/schools/psychology/people/profile.aspx?Referenceld=73262)

[Dr Carmel Mevorach \(/schools/psychology/people/profile.aspx?Referenceld=8857\)](/schools/psychology/people/profile.aspx?Referenceld=8857)

Lecturer

Telephone [+44 \(0\)121 41 44910 \(tel:+44 121 41 44910\)](tel:+4401214144910)

Email [c.mevorach@bham.ac.uk \(mailto:c.mevorach@bham.ac.uk\)](mailto:c.mevorach@bham.ac.uk)



[Dr Karen Mullinger \(/schools/psychology/people/profile.aspx?Referenceld=73267\)](/schools/psychology/people/profile.aspx?Referenceld=73267)

Joint Nottingham and Birmingham Lecturer and Anne McLaren Research Fellow

Dr Mullinger is an expert in simultaneous EEG-fMRI. She focuses on understanding the sources of the EEG artefacts and how to reduce them at source. Using the best EEG-fMRI techniques available she investigates neurovascular coupling to better understand brain function.

See [Dr Mullinger's Nottingham profile \(http://www.nottingham.ac.uk/physics/people/karen.mullinger\)](http://www.nottingham.ac.uk/physics/people/karen.mullinger)

Telephone [+44 \(0\)121 414 7615 \(tel:+44 121 414 7615\)](tel:+4401214147615)

Email [k.mullinger@bham.ac.uk \(mailto:k.mullinger@bham.ac.uk\)](mailto:k.mullinger@bham.ac.uk)



[Dr Samantha Rogers \(/schools/psychology/people/profile.aspx?Referenceld=73275\)](/schools/psychology/people/profile.aspx?Referenceld=73275)

Lecturer in Psychology

Dr Samantha Rogers is a Lecturer in the School of Psychology. She is primarily interested in parenting interactions and the development of infants and children.

Telephone [+44 \(0\)121 414 4935 \(tel:+44 121 414 4935\)](tel:+4401214144935)

Email [s.l.rogers@bham.ac.uk \(mailto:s.l.rogers@bham.ac.uk\)](mailto:s.l.rogers@bham.ac.uk)

[Pia Rotshtein \(/schools/psychology/people/profile.aspx?Referenceld=73265\)](/schools/psychology/people/profile.aspx?Referenceld=73265)

[Dr Brandon Stewart \(/schools/psychology/people/profile.aspx?Referenceld=73266\)](/schools/psychology/people/profile.aspx?Referenceld=73266)

Lecturer in Social Psychology

Dr Stewart is an experimental Social Psychologist with research interests in social cognition, intergroup relations, and ageing. Much of his research focuses on how goals and environments influence automatic and controlled thinking to produce prejudice and influence intergroup relations and decision making.

Telephone [+44 \(0\)121 414 4939 \(tel:+44 121 414 4939\)](tel:+4401214144939)

Email [b.stewart@bham.ac.uk \(mailto:b.stewart@bham.ac.uk\)](mailto:b.stewart@bham.ac.uk)

[Dr Maria Wimber \(/schools/psychology/people/profile.aspx?Referenceld=69614\)](/schools/psychology/people/profile.aspx?Referenceld=69614)

Lecturer

Dr Maria Wimber is a cognitive neuroscientist interested in human long-term memory. How can the brain retrieve a single past experience, given the huge amount of similar, overlapping events stored in memory? And why do some experiences transform into stable memories while others are forgotten? Maria uses a combination of imaging (fMRI, EEG/MEG) and behavioural methods with the aim to understand ...

Telephone [+44 \(0\)121 414 4659](tel:+44%20121%20414%204659) (tel:+44 121 414 4659)

Email m.wimber@bham.ac.uk (mailto:m.wimber@bham.ac.uk)



Birmingham Fellows

[Dr Stephane De Brito \(/schools/psychology/people/profile.aspx?Referenceld=36945\)](/schools/psychology/people/profile.aspx?Referenceld=36945)

Birmingham Fellow

Dr De Brito conducts functional and structural MRI research to 1: examine the neural substrates associated with the development and the persistence of severe antisocial behaviour in children and adults; 2. shed light on the relationship between childhood maltreatment and brain structure and functioning; and 3. Identify structural and functional neural markers of resilience.

Telephone [+44 \(0\)121 414 2641](tel:+44%20121%20414%202641) (tel:+44 121 414 2641)

Email s.a.debrito@bham.ac.uk (mailto:s.a.debrito@bham.ac.uk)



[Dr Joseph Galea \(/schools/psychology/people/profile.aspx?Referenceld=52657\)](/schools/psychology/people/profile.aspx?Referenceld=52657)

Independent Research Fellow / Birmingham Fellow

Dr Galea is broadly interested in motor control. This ranges from the neural correlates of motor learning to stroke rehabilitation. At present, he is particularly interested in how reward/punishment influences our actions and can be used to alter the speed at which our motor system learns or retains new movements.

Personal website: www.josephgalea.weebly.com (<http://www.josephgalea.weebly.com/>)

Telephone [+44 \(0\) 121 414 3601](tel:+44%20121%20414%203601) (tel:+44 121 414 3601)

Email j.galea@bham.ac.uk (mailto:j.galea@bham.ac.uk)



[Dr Stephen Mayhew \(/schools/psychology/people/profile.aspx?Referenceld=30986\)](/schools/psychology/people/profile.aspx?Referenceld=30986)

Birmingham Fellow

Dr Steve Mayhew conducts a lot of simultaneous EEG-fMRI experiments in an effort to better understand the coupling between single-trial variability in electrophysiological and haemodynamic measurements of brain responses, and how interactions between ongoing brain processes and external events are intrinsic to the function of the brain.

Telephone [+44 \(0\)121 414 7191](tel:+44%20121%20414%207191) (tel:+44 121 414 7191)

Email s.d.mayhew@bham.ac.uk (mailto:s.d.mayhew@bham.ac.uk)



[Dr Bernhard Staresina \(/schools/psychology/people/profile.aspx?Referenceld=85571\)](/schools/psychology/people/profile.aspx?Referenceld=85571)

Birmingham Fellow

Dr Staresina's research focuses on the neural mechanisms underlying episodic memory in humans. He is interested in how different brain mechanisms – in particular subregions of the medial temporal lobe (MTL) - contribute to successful encoding, consolidation and recollection of multiple event details. To address this question, he uses a combination of functional magnetic resonance imaging ...

Telephone [+44 \(0\)121 414 8690](tel:+44%20121%20414%208690) (tel:+44 121 414 8690)

Email b.staresina@bham.ac.uk (mailto:b.staresina@bham.ac.uk)



[Dr Claudio Tennie \(/schools/psychology/people/profile.aspx?Referenceld=52686\)](/schools/psychology/people/profile.aspx?Referenceld=52686)

Birmingham Fellow

Dr Claudio Tennie's work focusses on the evolutionary origins of modern human culture (and cooperation).

Telephone [+44 \(0\)121 414 6795](tel:+44%20121%20414%206795) (tel:+44 121 414 6795)

Email c.tennie@bham.ac.uk (mailto:c.tennie@bham.ac.uk)



[Dr Robin Thompson \(/schools/psychology/people/profile.aspx?Referenceld=71086\)](/schools/psychology/people/profile.aspx?Referenceld=71086)

Senior Birmingham Fellow

Robin Thompson is a cognitive psychologist interested in the underlying nature of human language (both signed and spoken) and, in particular, how language is related to other aspects of cognition.

Email r.thompson@bham.ac.uk (mailto:r.thompson@bham.ac.uk)



[Myfanwy Ball \(/schools/psychology/people/profile.aspx?Referenceld=73319\)](/schools/psychology/people/profile.aspx?Referenceld=73319)

[Dr Ruth Butterworth \(/schools/psychology/people/profile.aspx?Referenceld=73277\)](/schools/psychology/people/profile.aspx?Referenceld=73277)

Academic Tutor in Clinical Psychology

Ruth is a Clinical Psychologist specialising in work with Children, Young People and Families, particularly in the perinatal and early years period. As an Academic Tutor on the ClinPsyD Programme she oversees the Therapeutic Issues module and has a particular interest in helping trainee clinical psychologists develop as reflective practitioners.

Telephone **[+44 \(0\)121 414 4904 \(tel:+44 121 414 4904\)](tel:+441214144904)**

Email **[r.e.butterworth@bham.ac.uk \(mailto:r.e.butterworth@bham.ac.uk\)](mailto:r.e.butterworth@bham.ac.uk)**

[Dr Michelle Fisher \(/schools/psychology/people/profile.aspx?Referenceld=73278\)](/schools/psychology/people/profile.aspx?Referenceld=73278)

[Dr Ruth Howard \(/schools/psychology/people/profile.aspx?Referenceld=10175\)](/schools/psychology/people/profile.aspx?Referenceld=10175)

Senior Academic Tutor, ClinPsyD course

I am a Senior Academic Tutor and Admissions Tutor for the ClinPsyD Programme. I supervise research within the area of health psychology, focusing mainly on coeliac disease, cancer and end of life care. I organise the ClinPsyD health psychology teaching module and support the organisation of the MRes Clinical programme.

Telephone **[+44 \(0\) 121 414 4921 \(tel:+44 121 414 4921\)](tel:+441214144921) / **[+44 \(0\) 121 414 4915 \(tel:+44 121 414 4915\)](tel:+441214144915)****

Email **[r.a.howard.20@bham.ac.uk \(mailto:r.a.howard.20@bham.ac.uk\)](mailto:r.a.howard.20@bham.ac.uk)**



[Dr Elizabeth Kent \(/schools/psychology/people/profile.aspx?Referenceld=73279\)](/schools/psychology/people/profile.aspx?Referenceld=73279)

[Dr Gary Urquhart Law \(/schools/psychology/people/profile.aspx?Referenceld=10572\)](/schools/psychology/people/profile.aspx?Referenceld=10572)

Senior Academic Tutor
Lecturer in Clinical Psychology & Child Clinical Psychologist

Telephone **[+44 \(0\)121 41 46296 \(tel:+44 121 41 46296\)](tel:+441214146296)**

Email **[g.u.law@bham.ac.uk \(mailto:g.u.law@bham.ac.uk\)](mailto:g.u.law@bham.ac.uk)**

[Dr Theresa Powell \(/schools/psychology/people/profile.aspx?Referenceld=8864\)](/schools/psychology/people/profile.aspx?Referenceld=8864)

Programme Director, Doctorate in Clinical Psychology

Telephone **[0121 414 7124 \(tel:+44 121 414 7124\)](tel:+441214147124)**

Email **[t.powell@bham.ac.uk \(mailto:t.powell@bham.ac.uk\)](mailto:t.powell@bham.ac.uk)**



[Dr Gerard Riley \(/schools/psychology/people/profile.aspx?Referenceld=8868\)](/schools/psychology/people/profile.aspx?Referenceld=8868)

Senior Academic Tutor

Telephone [+44 \(0\)121 41 44923 \(tel:+44 121 41 44923\)](tel:+441214144923)

Email [g.a.riley@bham.ac.uk \(mailto:g.a.riley@bham.ac.uk\)](mailto:g.a.riley@bham.ac.uk)

Honorary Academic

[Dr Richard Bennett \(/schools/psychology/people/profile.aspx?Referenceld=10615\)](/schools/psychology/people/profile.aspx?Referenceld=10615)

Senior Academic Tutor

Course Lead - PGDip High Intensity Psychological Therapy (CBT)

I am a Clinical Psychologist working both at the University of Birmingham and in the NHS. I am an Academic Tutor on the Cognitive Behaviour Therapy (CBT) Programmes, and am the Course Lead for the Postgraduate Diploma in High Intensity Psychological Therapies.

Telephone [+44 \(0\)121 41 43763 \(tel:+44 121 41 43763\)](tel:+441214143763)

Email [r.bennett@bham.ac.uk \(mailto:r.bennett@bham.ac.uk\)](mailto:r.bennett@bham.ac.uk)



[Professor Max Birchwood \(/schools/psychology/people/profile.aspx?Referenceld=9429\)](/schools/psychology/people/profile.aspx?Referenceld=9429)

Professor of Youth Mental Health

Clinical Director, YouthSpace Mental Health Service, Birmingham and Solihull Mental Health Foundation Trust

I am an applied researcher embedded in Birmingham mental health services. I'm a clinical psychologist by training and act as clinical director to the YouthSpace youth mental health service ([www.youthspace.me \(http://www.youthspace.me\)](http://www.youthspace.me)) and Director of research and Innovation for Birmingham and Solihull Mental Health Foundation Trust.

I'm a keen member of the Mancunian Diaspora (the ...

Telephone [+44 \(0\)121 41 47214 \(tel:+44 121 41 47214\)](tel:+441214147214)

Email [m.j.birchwood.20@bham.ac.uk \(mailto:m.j.birchwood.20@bham.ac.uk\)](mailto:m.j.birchwood.20@bham.ac.uk)



[Professor David Booth \(/schools/psychology/people/profile.aspx?Referenceld=15148\)](/schools/psychology/people/profile.aspx?Referenceld=15148)

Honorary Professor

David Booth investigates the ways in which an individual's life works. His research and teaching centre on the processes in the mind that situate actions and reactions by people, members of other species and, indeed, socially intelligent engineered systems.

Email [d.a.booth@bham.ac.uk \(mailto:d.a.booth@bham.ac.uk\)](mailto:d.a.booth@bham.ac.uk)



[Professor Leam Craig \(/schools/psychology/people/profile.aspx?Referenceld=66629\)](/schools/psychology/people/profile.aspx?Referenceld=66629)

Consultant Clinical Forensic Psychologist

Professor Leam A. Craig is a Consultant Forensic and Clinical Psychologist and Partner at Forensic Psychology Practice Ltd. He is Professor (Hon) of Forensic Psychology at the Centre for Forensic and Criminological Psychology, University of Birmingham.

He has been appointed Fellow of the British Psychological Society.

He has authored over 70 research ...

Telephone [+44 \(0\)121 377 6276 \(tel:+44 121 377 6276\)](tel:+441213776276)

Email [leamcraig@forensicpsychology.co.uk \(mailto:leamcraig@forensicpsychology.co.uk\)](mailto:leamcraig@forensicpsychology.co.uk)



[Graham Davies \(/schools/psychology/people/profile.aspx?Referenceld=73340\)](/schools/psychology/people/profile.aspx?Referenceld=73340)

[Professor Saumitra \(Shoumitro\) Deb \(/schools/psychology/people/profile.aspx?Referenceld=15227\)](/schools/psychology/people/profile.aspx?Referenceld=15227)

Consultant Psychiatrist & Honorary Clinical Professor of Neuropsychiatry

Telephone [+44 \(0\)121 417 7130 \(tel:+44 121 417 7130\)](tel:+441214177130)

Email [s.deb@bham.ac.uk \(mailto:s.deb@bham.ac.uk\)](mailto:s.deb@bham.ac.uk)

[Dr Hermine Graham \(/schools/psychology/people/profile.aspx?Referenceld=10170\)](/schools/psychology/people/profile.aspx?Referenceld=10170)

Lecturer & Consultant Clinical Psychologist, Birmingham & Solihull Mental Health Foundation Trust

Dr Hermine Graham is a Consultant Clinical Psychologist and Lecturer; she has led in the development and evaluation of an integrated treatment and service model for people with severe mental health problems who misuse alcohol and drugs, in Birmingham. This service model has been highlighted as a model of good practice by the Department of Health. She has published articles within this area and ...

Telephone **+44 (0)121 414 7204 (tel:+44 121 414 7204)**

Email **[h.l.graham@bham.ac.uk \(mailto:h.l.graham@bham.ac.uk\)](mailto:h.l.graham@bham.ac.uk)**

[Dr Xun He \(/schools/psychology/people/profile.aspx?Referenceld=15231\)](/schools/psychology/people/profile.aspx?Referenceld=15231)

Research Fellow

Email **[x.he@bham.ac.uk \(mailto:x.he@bham.ac.uk\)](mailto:x.he@bham.ac.uk)**

[Professor Glyn Humphreys \(/schools/psychology/people/profile.aspx?Referenceld=10568\)](/schools/psychology/people/profile.aspx?Referenceld=10568)

Honorary Professor of Cognitive Psychology

Telephone **+44 (0)121 41 44930 (tel:+44 121 41 44930)**

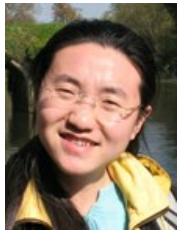
Email **[g.w.humphreys@bham.ac.uk \(mailto:g.w.humphreys@bham.ac.uk\)](mailto:g.w.humphreys@bham.ac.uk)**

[Dr Xiaoyue Jiang \(/schools/psychology/people/profile.aspx?Referenceld=10569\)](/schools/psychology/people/profile.aspx?Referenceld=10569)

Research fellow

Dr Jiang's main research interests are image processing and pattern recognition. Now she works with Dr Andrew Schofield for the project "Extract intrinsic image from a single image". They try to integrate the knowledge of human vision system into computer vision system.

Email **[x.y.jiang@bham.ac.uk \(mailto:x.y.jiang@bham.ac.uk\)](mailto:x.y.jiang@bham.ac.uk)**



[Professor Jim Orford \(/schools/psychology/people/profile.aspx?Referenceld=8862\)](/schools/psychology/people/profile.aspx?Referenceld=8862)

Emeritus Professor of Clinical & Community Psychology

Now semi-retired, I have a long career behind me and have achieved a national and international reputation in the fields of addiction and community psychology.

Telephone **+44 (0)121 41 44918 (tel:+44 121 41 44918)**

Email **[j.f.orford@bham.ac.uk \(mailto:j.f.orford@bham.ac.uk\)](mailto:j.f.orford@bham.ac.uk)**



[Professor M. Jane Riddoch \(/schools/psychology/people/profile.aspx?Referenceld=8867\)](/schools/psychology/people/profile.aspx?Referenceld=8867)

Honorary Professor in Cognitive Neuropsychology

Jane Riddoch is a cognitive neuropsychologist whose research covers visual disorders (agnosia, optic aphasia), disorders of attention (neglect, extinction) and action (apraxia, action disorganisation syndrome) and neuropsychological rehabilitation. She originally trained as a physiotherapist, then took a degree and PhD in Psychology. She has published 150 papers in leading international journals ...

Telephone **+44 (0) 121 414 4912 (tel:+44 121 414 4912)**

Email **[m.j.riddoch@bham.ac.uk \(mailto:m.j.riddoch@bham.ac.uk\)](mailto:m.j.riddoch@bham.ac.uk)**



[Professor John Rose \(/schools/psychology/people/profile.aspx?Referenceld=8869\)](/schools/psychology/people/profile.aspx?Referenceld=8869)

Director Foren Clin PsyD & Academic Director ClinPsyD
Consultant Clinical Psychologist, St Andrews Heath Care

John Rose is a clinical psychologist with a particular interest in working with people who have Intellectual Disabilities and works on the Clin Psy D course at the University. He is also Director of the new Forensic Clinical Doctorate that had its first intake in September 2013.

He also works for St Andrews Health Care and has a strong emphasis on integrating ...



Telephone [+44 \(0\)121 41 42640](tel:+44%20121%2041%2042640) (tel:[+44 121 41 42640](tel:+44%20121%2041%2042640))
Email j.l.rose@bham.ac.uk (mailto:j.l.rose@bham.ac.uk)

[Dr Jo Smith \(/schools/psychology/people/profile.aspx?ReferenceId=74426\)](/schools/psychology/people/profile.aspx?ReferenceId=74426)

Honorary Senior Lecturer

Academic Related

[James Blundell \(/schools/psychology/people/profile.aspx?ReferenceId=73323\)](/schools/psychology/people/profile.aspx?ReferenceId=73323)

[Dr Alimul Chowdhury \(/schools/psychology/people/profile.aspx?ReferenceId=9919\)](/schools/psychology/people/profile.aspx?ReferenceId=9919)

Clinical Scientist / Principal MR Physicist

Dr Ali Chowdhury is a registered Clinical Scientist and MR Physicist in a joint post with the BUIC and the University Hospitals Birmingham (UHB) NHS Foundation Trust. His work in the area of Magnetic Resonance Imaging (MRI) and Spectroscopy (MRS) includes providing expert advice in sequence development, quality assurance (QA) and MR safety. In addition, he is active in clinical research ...

Telephone [+44 \(0\)121 414 8833](tel:+44%20121%20414%208833) (tel:[+44 121 414 8833](tel:+44%20121%20414%208833))

Email a.chowdhury@bham.ac.uk (mailto:a.chowdhury@bham.ac.uk)



[Anna Fogel \(/schools/psychology/people/profile.aspx?ReferenceId=73325\)](/schools/psychology/people/profile.aspx?ReferenceId=73325)

[Robin Green \(/schools/psychology/people/profile.aspx?ReferenceId=73324\)](/schools/psychology/people/profile.aspx?ReferenceId=73324)

[Caroline Oliver \(/schools/psychology/people/profile.aspx?ReferenceId=73320\)](/schools/psychology/people/profile.aspx?ReferenceId=73320)

[Dr Carly Pymont \(/schools/psychology/people/profile.aspx?ReferenceId=73326\)](/schools/psychology/people/profile.aspx?ReferenceId=73326)

Instructor

Dr Carly Pymont recently gained her PhD from the Australian National University. Her thesis examined mathematical expertise and the link between linguistic and mathematical processing.

Telephone [+44 \(0\)121 414 6245](tel:+44%20121%20414%206245) (tel:[+44 121 414 6245](tel:+44%20121%20414%206245))



Email c.pymont@bham.ac.uk (<mailto:c.pymont@bham.ac.uk>)



[Mr Jonathan Winter \(/schools/psychology/people/profile.aspx?Referenceld=8874\)](/schools/psychology/people/profile.aspx?Referenceld=8874)

Research Support

Technical Support for the PRISM Lab, and free help/advice to other members of the School. My main webpage can be found here: <http://prism.bham.ac.uk/~jlw>
(<http://prism.bham.ac.uk/~jlw>)

Telephone [+44 \(0\)121 414 2868](tel:+441214142868) (tel:+44 121 414 2868)

Email j.winter@bham.ac.uk (<mailto:j.winter@bham.ac.uk>)

[Privacy](#) | [Legal](#) | [Cookies and cookie policy](#) | [Accessibility](#) | [Site map](#) | [Website feedback](#) | [Charitable information](#)

© University of Birmingham 2015

