

## Academic staff in the School of Psychology

### Head of School

#### **[Professor Kim Shapiro \(/schools/psychology/people/profile.aspx?Referenceld=46352&Name=professor-kim-shapiro\)](/schools/psychology/people/profile.aspx?Referenceld=46352&Name=professor-kim-shapiro)**

Professor and Chair of Cognitive Neuroscience  
Head of School

School of Psychology

Professor Shapiro in collaboration with other colleagues published the first paper on the 'attentional blink' phenomenon, which has attracted great interest on the part of many scientists. The original publication has been cited over 1000 times and approximately 500 reports on the same topic have followed from it. He employs a wide range of neuroscience approaches and tools in his ...

Telephone **+44 (0)121 414 4930** (tel:+44 121 414 4930)

Email **[k.l.shapiro@bham.ac.uk](mailto:k.l.shapiro@bham.ac.uk)** (mailto:k.l.shapiro@bham.ac.uk)



### Academic staff

|                       |                       |                       |                       |                       |                       |                       |                       |                       |                       |                       |                       |                       |                       |                       |                       |                       |                       |                       |                       |                       |                       |                       |                       |                       |                       |
|-----------------------|-----------------------|-----------------------|-----------------------|-----------------------|-----------------------|-----------------------|-----------------------|-----------------------|-----------------------|-----------------------|-----------------------|-----------------------|-----------------------|-----------------------|-----------------------|-----------------------|-----------------------|-----------------------|-----------------------|-----------------------|-----------------------|-----------------------|-----------------------|-----------------------|-----------------------|
| <a href="#">A</a>     | <a href="#">B</a>     | <a href="#">C</a>     | <a href="#">D</a>     | <a href="#">E</a>     | <a href="#">F</a>     | <a href="#">G</a>     | <a href="#">H</a>     | <a href="#">I</a>     | <a href="#">J</a>     | <a href="#">K</a>     | <a href="#">L</a>     | <a href="#">M</a>     | <a href="#">N</a>     | <a href="#">O</a>     | <a href="#">P</a>     | <a href="#">Q</a>     | <a href="#">R</a>     | <a href="#">S</a>     | <a href="#">T</a>     | <a href="#">U</a>     | <a href="#">V</a>     | <a href="#">W</a>     | <a href="#">X</a>     | <a href="#">Y</a>     | <a href="#">Z</a>     |
| <a href="#">(ht</a>   | <a href="#">(ht</a>   | <a href="#">(ht</a>   | <a href="#">(ht</a>   | <a href="#">(ht</a>   | <a href="#">(ht</a>   | <a href="#">(ht</a>   | <a href="#">(ht</a>   | <a href="#">(ht</a>   | <a href="#">(ht</a>   | <a href="#">(ht</a>   | <a href="#">(ht</a>   | <a href="#">(ht</a>   | <a href="#">(ht</a>   | <a href="#">(ht</a>   | <a href="#">(ht</a>   | <a href="#">(ht</a>   | <a href="#">(ht</a>   | <a href="#">(ht</a>   | <a href="#">(ht</a>   | <a href="#">(ht</a>   | <a href="#">(ht</a>   | <a href="#">(ht</a>   | <a href="#">(ht</a>   | <a href="#">(ht</a>   | <a href="#">(ht</a>   |
| <a href="#">a-</a>    | <a href="#">a-</a>    | <a href="#">a-</a>    | <a href="#">a-</a>    | <a href="#">a-</a>    | <a href="#">a-</a>    | <a href="#">a-</a>    | <a href="#">a-</a>    | <a href="#">a-</a>    | <a href="#">a-</a>    | <a href="#">a-</a>    | <a href="#">a-</a>    | <a href="#">a-</a>    | <a href="#">a-</a>    | <a href="#">a-</a>    | <a href="#">a-</a>    | <a href="#">a-</a>    | <a href="#">a-</a>    | <a href="#">a-</a>    | <a href="#">a-</a>    | <a href="#">a-</a>    | <a href="#">a-</a>    | <a href="#">a-</a>    | <a href="#">a-</a>    | <a href="#">a-</a>    | <a href="#">a-</a>    |
| <a href="#">z.a</a>   | <a href="#">z.a</a>   | <a href="#">z.a</a>   | <a href="#">z.a</a>   | <a href="#">z.a</a>   | <a href="#">z.a</a>   | <a href="#">z.a</a>   | <a href="#">z.a</a>   | <a href="#">z.a</a>   | <a href="#">z.a</a>   | <a href="#">z.a</a>   | <a href="#">z.a</a>   | <a href="#">z.a</a>   | <a href="#">z.a</a>   | <a href="#">z.a</a>   | <a href="#">z.a</a>   | <a href="#">z.a</a>   | <a href="#">z.a</a>   | <a href="#">z.a</a>   | <a href="#">z.a</a>   | <a href="#">z.a</a>   | <a href="#">z.a</a>   | <a href="#">z.a</a>   | <a href="#">z.a</a>   | <a href="#">z.a</a>   | <a href="#">z.a</a>   |
| <a href="#">sty</a>   | <a href="#">sty</a>   | <a href="#">sty</a>   | <a href="#">sty</a>   | <a href="#">sty</a>   | <a href="#">sty</a>   | <a href="#">sty</a>   | <a href="#">sty</a>   | <a href="#">sty</a>   | <a href="#">sty</a>   | <a href="#">sty</a>   | <a href="#">sty</a>   | <a href="#">sty</a>   | <a href="#">sty</a>   | <a href="#">sty</a>   | <a href="#">sty</a>   | <a href="#">sty</a>   | <a href="#">sty</a>   | <a href="#">sty</a>   | <a href="#">sty</a>   | <a href="#">sty</a>   | <a href="#">sty</a>   | <a href="#">sty</a>   | <a href="#">sty</a>   | <a href="#">sty</a>   | <a href="#">sty</a>   |
| <a href="#">style</a> | <a href="#">style</a> | <a href="#">style</a> | <a href="#">style</a> | <a href="#">style</a> | <a href="#">style</a> | <a href="#">style</a> | <a href="#">style</a> | <a href="#">style</a> | <a href="#">style</a> | <a href="#">style</a> | <a href="#">style</a> | <a href="#">style</a> | <a href="#">style</a> | <a href="#">style</a> | <a href="#">style</a> | <a href="#">style</a> | <a href="#">style</a> | <a href="#">style</a> | <a href="#">style</a> | <a href="#">style</a> | <a href="#">style</a> | <a href="#">style</a> | <a href="#">style</a> | <a href="#">style</a> | <a href="#">style</a> |

#### **[Dr Jane Waite \(/schools/psychology/people/profile.aspx?Referenceld=74353&Name=dr-jane-waite\)](/schools/psychology/people/profile.aspx?Referenceld=74353&Name=dr-jane-waite)**

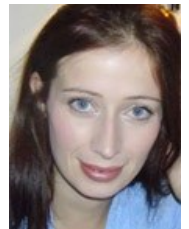
Postdoctoral Research Fellow

School of Psychology

Jane Waite is a research fellow at the University of Birmingham and is based at The Cerebra Centre for Neurodevelopmental Disorders.

Telephone **+44 (0)121 414 7206** (tel:+44 121 414 7206)

Email **[j.e.waite@bham.ac.uk](mailto:j.e.waite@bham.ac.uk)** (mailto:j.e.waite@bham.ac.uk)



#### **[Dr Linda Wheeldon \(/schools/psychology/people/profile.aspx?Referenceld=10567&Name=dr-linda-wheeldon\)](/schools/psychology/people/profile.aspx?Referenceld=10567&Name=dr-linda-wheeldon)**

Reader in Psycholinguistics

School of Psychology

Telephone **+44 (0) 121 414 7048** (tel:+44 121 414 7048)

Email **[l.r.wheeldon@bham.ac.uk](mailto:l.r.wheeldon@bham.ac.uk)** (mailto:l.r.wheeldon@bham.ac.uk)



#### **[Thomas White \(/schools/psychology/people/profile.aspx?Referenceld=88196&Name=thomas-white\)](/schools/psychology/people/profile.aspx?Referenceld=88196&Name=thomas-white)**

Postdoctoral Research Fellow

School of Psychology

Dr Tom White aims to quantify the effects of attention and vigilance on multisensory processing using EEG/fMRI. Combining multimodal neuroimaging data is central to this work; and his previous investigations of healthy brain function and its disturbance in schizophrenia.

Email **[t.white.3@bham.ac.uk](mailto:t.white.3@bham.ac.uk)** (mailto:t.white.3@bham.ac.uk)



#### **[Dr Maria Wimber \(/schools/psychology/people/profile.aspx?Referenceld=69614&Name=dr-maria-wimber\)](/schools/psychology/people/profile.aspx?Referenceld=69614&Name=dr-maria-wimber)**

Lecturer

School of Psychology

Dr Maria Wimber is a cognitive neuroscientist interested in human long-term memory. How can the brain retrieve a single past experience, given the huge amount of similar, overlapping events stored in memory? And why do some experiences transform into stable memories while others are forgotten? Maria uses a combination of imaging (fMRI, EEG/MEG) and behavioural methods with the aim to understand ...

Telephone **+44 (0)121 414 4659** (tel:+44 121 414 4659)

Email **[m.wimber@bham.ac.uk](mailto:m.wimber@bham.ac.uk)** (mailto:m.wimber@bham.ac.uk)



#### **[Professor Alan Wing \(/schools/psychology/people/profile.aspx?Referenceld=10638&Name=professor-alan-wing\)](/schools/psychology/people/profile.aspx?Referenceld=10638&Name=professor-alan-wing)**

Professor of Human Movement

School of Psychology



Telephone [+44 \(0\) 121 414 7954](tel:+44(0)1214147954) (tel:+44 121 414 7954)  
Email [a.m.wing@bham.ac.uk](mailto:a.m.wing@bham.ac.uk) (mailto:a.m.wing@bham.ac.uk)



---

**[Mr Jonathan Winter](/schools/psychology/people/profile.aspx?Referenceld=8874&Name=mr-jonathan-winter)** (/schools/psychology/people/profile.aspx?Referenceld=8874&Name=mr-jonathan-winter)

Research Support

School of Psychology

Technical Support for the PRISM Lab, and free help/advice to other members of the School. My main webpage can be found here: <http://prism.bham.ac.uk/~jlw> (<http://prism.bham.ac.uk/~jlw>)

Telephone [+44 \(0\)121 414 2868](tel:+44(0)1214142868) (tel:+44 121 414 2868)  
Email [j.winter@bham.ac.uk](mailto:j.winter@bham.ac.uk) (mailto:j.winter@bham.ac.uk)

---

**[Dr Amanda Wood](/schools/psychology/people/profile.aspx?Referenceld=8876&Name=dr-amanda-wood)** (/schools/psychology/people/profile.aspx?Referenceld=8876&Name=dr-amanda-wood)

Senior Lecturer

School of Psychology

Telephone [+44 0121 414 3338](tel:+4401214143338) (tel:+44 121 414 3338)  
Email [a.g.wood@bham.ac.uk](mailto:a.g.wood@bham.ac.uk) (mailto:a.g.wood@bham.ac.uk)



---

**[Professor Stephen Wood](/schools/psychology/people/profile.aspx?Referenceld=8875&Name=professor-stephen-wood)** (/schools/psychology/people/profile.aspx?Referenceld=8875&Name=professor-stephen-wood)

Professor of Adolescent Brain Development and Mental Health

School of Psychology

My research aims to understand the health paradox of adolescence - the years between 12 and 25 are a time of great physical fitness, yet this is the period during which 75% of all mental disorders have their onset. Why should this be the case? Clearly changes in the brain are likely culprits, but how they interact with genetic and environmental factors to produce illness is unclear.

Telephone [0121 4144917](tel:+4401214144917) (tel:+44 121 4144917)  
Email [s.j.wood@bham.ac.uk](mailto:s.j.wood@bham.ac.uk) (mailto:s.j.wood@bham.ac.uk)



---

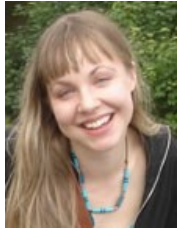
**[Dr Kate Woodcock](/schools/psychology/people/profile.aspx?Referenceld=8877&Name=dr-kate-woodcock)** (/schools/psychology/people/profile.aspx?Referenceld=8877&Name=dr-kate-woodcock)

Research Fellow

School of Psychology

I am interested in investigating the relationships between the brain, cognition and behaviour.

Telephone [+44 \(0\)121 414 3861](tel:+44(0)1214143861) (tel:+44 121 414 3861)  
Email [k.a.woodcock@bham.ac.uk](mailto:k.a.woodcock@bham.ac.uk) (mailto:k.a.woodcock@bham.ac.uk)



---

**[Dr Jessica Woodhams](/schools/psychology/people/profile.aspx?Referenceld=10639&Name=dr-jessica-woodhams)** (/schools/psychology/people/profile.aspx?Referenceld=10639&Name=dr-jessica-woodhams)

Senior Lecturer in Forensic Psychology

School of Psychology

Jessica is a chartered psychologist and an HCPC registered forensic psychologist. Her primary areas of research are policing and sexual offending. She is the founder of the international academic-practitioner C-LINK network (Crime Linkage International Network, [www.crimelinkage.org](http://www.crimelinkage.org) (<http://www.crimelinkage.org>)).

Telephone [\(0\)121 414 6937](tel:+44(0)1214146937) (tel:+44 121 414 6937)  
Email [j.woodhams@bham.ac.uk](mailto:j.woodhams@bham.ac.uk) (mailto:j.woodhams@bham.ac.uk)



---

**[Dr Rachel Wright](/schools/psychology/people/profile.aspx?Referenceld=8878&Name=dr-rachel-wright)** (/schools/psychology/people/profile.aspx?Referenceld=8878&Name=dr-rachel-wright)

Research Fellow

School of Psychology

Rachel Wright is a Postdoctoral Research Fellow working in the Sensory Motor Neuroscience research group. Her work involves motion capture to analyse aspects of human movement and balance control. Her current research is funded by The Stroke Association and investigates auditory cueing in walking and stepping.

Email [r.wright.1@bham.ac.uk](mailto:r.wright.1@bham.ac.uk) (mailto:r.wright.1@bham.ac.uk)

