

Student Support Impact Report 2013

The University was founded on the belief that education should be available to all who can benefit from it, regardless of social and economic position. Our innovative student support schemes and your generosity continue to advance this vision.



A2B helps more students fulfil their potential

University is the time in a young person's life when they learn; not just about how to excel in their chosen subject but, just as importantly, about who they are and what they can be. It's a time when possibilities start to become realities.

Thanks to your generosity and that of your fellow supporters, even more young people are here at the University who would otherwise have missed out on studying at Birmingham.

This year we had 1,146 applicants to the A2B scheme, a 19% rise on 2012. Of those, 332 students began their studies at the University in September, with 97 students qualifying for the A2B scholarship.

Anne Snell, A2B Manager, says: 'This is about giving students the chance to realise opportunities and telling young people that their talent and drive to succeed is what matters. Time and again, students say that the fact someone they have never met believes in them enough to support their scholarship drives them on even more to succeed. These gifts genuinely transform lives and I cannot thank you enough.'

STUDENT SUPPORT PROGRAMME GLOSSARY

- 1. ACADEMIC ENRICHMENT PROGRAMME (AEP)** – focuses on Year 12 students in the West Midlands, encouraging them to consider University.
- 2. ACCESS TO BIRMINGHAM SCHEME (A2B)** – focuses on Year 13 students in the West Midlands, supporting them through the application process by providing mentoring and reduced entry grade offers.
- 3. A2B SCHOLARSHIP** – financial assistance for those students who have completed A2B, and attain the standard entry grades for their chosen course. Our students tell us this helps provide motivation in the final hurdle of exams.
- 4. GATEWAY INTERNSHIP** – open to students from widening participation backgrounds.



'Birmingham opened my eyes to possibilities. I am now in a position where I want to give something back, and A2B seems to be particularly efficient and effective. I feel

as though I am helping students from backgrounds similar to mine.'

Tim Smart (BSocSc Economics, 1979)

What giving means to us

'Rosie and I both studied at the University of Birmingham and we had a fantastic time while we were there. We wanted to give others the chance to have all the great experiences that a redbrick university offers.'

Rob Harris (BSc Chemical Engineering, 1979)



'When we first heard about A2B, we could see that it made a huge impact on people's lives, and we wanted to be a part of that positive difference. We've had opportunities to meet some of the inspirational A2B students – they are very motivated and humbled that a stranger is prepared to invest in them.'

Rosie Harris (BA Ancient History and Archeology, 1979) Host of the 2014 Leaders of Tomorrow Event...find out more on the back page



Making university a family first

Partnering with schools where many pupils have little or no family history of higher education, the University's Academic Enrichment Programme (AEP) is now in its sixth year.

The AEP invites Year 12 pupils to a week-long residential giving them a taste of life as a student at Birmingham. Their time on campus includes a stay in halls, attending lectures and seminars, social activities, and a formal graduation dinner; all aiming to demonstrate that a place at Birmingham is within their reach.

Outreach Officer Mohammed Ansar says: 'The AEP works to raise students' aspirations and show that the University is the place for them. I would like to thank everyone who has supported the AEP because it is the vital first step for many talented young people in studying at Birmingham and open the many doors that will help them in their life and career'



AEP summer school celebration event

What giving means to me

'I have a real passion for opening up higher education to everyone, no matter what their background or circumstances. I live in Birmingham, my children go to school here and I can see it's not simply about lack of money, it's about inspiration, understanding and feeling entitled. For me supporting AEP just fits.'

Kerrie Holland, University staff member, mum of three and Academic Enrichment Programme supporter



Our current research shows:

- ❑ 51% of the AEP students who applied to university named Birmingham as their first conditional choice
- ❑ A further 28% selected a Russell Group or 1994 Group University as their first conditional choice
- ❑ 52% of AEP students progressed to studying at a research-intensive university, including 37 at Birmingham

Unique internships create the arts leaders of the future

Gifted students with a passion for the arts are being given a unique opportunity to take their first steps into the industry via the University's Cultural Internships programme.

The paid, six-month internships in prestigious organisations including the City of Birmingham Symphony Orchestra, Birmingham Royal Ballet, and the National Trust provide students with invaluable experience and training that will give them a real edge when applying for jobs in this competitive sector.

Alison Darby, Cultural Partnerships Manager, explains: 'Our internships benefit both partners and students. Interns gain unique insights into the region's cultural scene, and they come out as better, more rounded work candidates who, we hope, will go on to be the cultural leaders of the future.'



What your support means to us

'My internship at Birmingham Museum and Art Gallery gave me the chance to learn so many new skills. When a job came up there, I applied, got it and have been an Exhibitions Officer since August 2012. It's so difficult to get into the arts now, but the internship gave me the confidence I needed.'

Katie Hall (MA History of Art, 2010)

'I completed an internship at the BBC and now work there as External Affairs Coordinator. I hadn't considered broadcasting, so I didn't know what to expect. It was a fantastic opportunity that opened my eyes to where I wanted to be.'

Rachael Heaven (MA Heritage Management, 2012)



Birmingham...



At University now
via AEP

'The AEP summer school was fantastic. I'd had no prior experience of university, so it was great to find out about it from people who knew. My mentor made me believe I could do it.'

Emma James, third year BA Theology and Religion undergraduate

'AEP gave me the big push I needed to do well in Year 13 and the confidence to apply to Birmingham. It is amazing and definitely worthwhile.'

Selina Begum, fourth year Dentistry undergraduate



Just graduated

'I'd always wanted to go to university and A2B pushed me to apply to Birmingham. I graduated with a first-class degree and now work as a graduate analyst in product management at UBS. Thank you to everyone who supports A2B. It really makes a difference.'

Eiranpreet Khangura (BSc Artificial Intelligence and Computer Science, 2013)



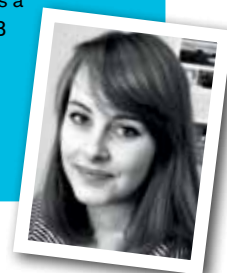
'Although I had a job throughout university, I couldn't have got through my course without the financial help A2B provided. I'm now taking a PGDipED, as I'm hoping to teach Biology.'

Sarah Connolly (BSc Biochemistry, 2013)



'University exposed me to new ideas and people and opened my mind. I've graduated from the College of Law in London with a first-class distinction and I'm working with the Reprieve charity on Death Row before I train as a barrister. I really appreciate what A2B has done for me.'

Jodie Anderson (BA Modern and Medieval History, 2012)



'I'm grateful to A2B for giving me the chance to go to the University of Birmingham, which was a fantastic experience and opened many doors for me. Since graduating, I've completed my PGCE and am finishing a Master's Degree. I now teach secondary Physical Education in Dudley and run my own business, coaching goalkeeping to young people in the Black Country.'

Bernard Moseley (BSc Sport, Physical Education and Coaching Science, 2012)



'I'm the first person in my family to go into higher education so A2B definitely made me think about university and I was really grateful to get the scholarship. I don't know what I'd be doing now without A2B. I now teach secondary Sociology and Psychology in York. Alongside teaching, I am also a form tutor so I am able to offer pastoral support and help inspire the next generation.'

Katie Winston (BA Psychology, 2011)



two years on

three years on



'A2B gave me the financial security to get through university. I now work for a private, nationwide physiotherapy company called Physio1st and divide my time between clinic and teaching. Thank you to everyone who made it possible for me to be a part of A2B.'

Jon Price (BSc Physiotherapy, 2010)



...and beyond

We couldn't have done it without you

Providing vital skills for the competitive world of work

From local to international internships, your generosity is helping the University offer a comprehensive and far-reaching programme of careers opportunities to students, crucial in today's competitive employment market.

Your gifts have funded work experience in high-profile businesses such as Santander, Pertemps, Sony, GlaxoSmithKline and The British Consulate in Chicago; and are helping to support students in completing high-quality work placements they may otherwise not have been able to afford.

Sue Welland, Work Experience Manager, says: 'Our bursary programmes give students vital help to find the work experience they need, while our internships and work placements give them opportunities that will stand out on their CVs, and skills such as teamwork, cultural awareness and dealing with different situations that are so important in the workplace.'

What giving means to us

'We are proud of our close association with The University of Birmingham and recognise that an educated workforce has a vital role to play in making sure the city remains at the focal point of the global knowledge economy. The Second City has the capacity to become one of the most competitive in Europe and we strongly believe that our students can compete on the world stage. By funding Gateway internships and offering placements, we aim to do all we can to help them reach their full potential.'

Carmen Watson, Chairperson of Pertemps

What your support means to us

Gateway intern

'This experience helped to further justify that I was in the right field of work where other people could see my enthusiasm. It made me extremely proud to have an organisation that I looked up to see my potential and value it by trusting in me.'

Janet Nambuya, Intern at Life Line Options, Birmingham (BA Social Policy, 2013).



International Intern

'This internship has showed me that there are many positions available for graduates in different countries and that employers are happy to consider hiring someone from abroad because of their fresh perspective and different skills.'

Ayesha Harris, Microfinance Intern with Opportunity International (BA European Politics, Society and Economics, 2013)



What giving means to me

'I wanted to give something back to the University, so as well as giving financially I use my business to run presentation skills training sessions for students. The job market is very competitive nowadays and people need far more than academic qualifications to get ahead. Our interactive workshops help students to sell themselves and their skills.'

Chris Helm, Catseye Development (BSocSc Money, Banking and Finance with French, 2000)



Could it be you?

We love planning ahead and being able to offer our donors the very best giving experience, so we are looking for a donor to host our Spring 2015 Leaders of Tomorrow event in the West Midlands. If you can help, please get in touch with us (details below).

We are your Donor Relations Team.

Please feel free to contact us for updates, send us a quote about what giving means to you or get involved in shaping our donor communications of the future
Development, Alumni & Business Engagement Office
0121 414 9160
donorrelations@contacts.bham.ac.uk
www.birmingham.ac.uk/giving



Jess, Lauren and Ceri

UNIVERSITY OF BIRMINGHAM

Edgbaston, Birmingham, B15 2TT, United Kingdom
www.birmingham.ac.uk