

Student Support – Your Impact 2014

The University of Birmingham was England's first civic university, where students from all backgrounds and religions were accepted on an equal basis. Your support helps us to keep that vision strong – inspiring students and helping to make their higher education a reality.



Your investment in student support helps our students achieve their best

Our pioneering outreach programmes have helped more than 1,000 young people in the West Midlands to date. Your financial support enables us to assist talented and hardworking students, in realising their full potential. Your generosity gives our students every chance to succeed and become the best that they can be. Thank you.

What Giving Means to Me

I have supported the A2B for four years. The students are my motivation; if you take the time to meet them, you will find talented individuals brimming with confidence and with a huge thirst for the whole University of Birmingham experience.

I have seen bright and talented youngsters whose potential has gone unfulfilled for the want of a little financial support. A2B is the means to offer that support, and to help unlock a brighter future. When I meet A2B students, I am reminded how my friends and I were once that young and excited about being at the University. The students' enthusiasm is palpable and infectious – it's an uplifting experience.

'We are hosting the 2015 Leaders of Tomorrow Reception. It was easy to persuade my business partners to support it, and our hosting happens to coincide with the aims of our Corporate Responsibility programme. But it is more than that; we might represent 'big business' but we are all part of the same community, and should be looking to connect with people in as many ways as we can. I have come to appreciate what the University does, and how we have common aims. I am very happy to support that – and hosting the event is a small contribution to it.'

*Lee Nuttall, Partner at Wragge (LLB Law, 1987)
Host of the 2015 Leaders of Tomorrow Reception*



STUDENT SUPPORT PROGRAMME GLOSSARY

Academic Enrichment Programme (AEP) – For year 12 and 13 students who are thinking about studying at a research-led university. Students are given the opportunity to experience first-hand what it is like to study, live and learn at Birmingham.

Access to Birmingham (A2B) – Provides local students from families and communities who have little or no experience of Higher Education an insight into studying at university, and offers support through pre-induction advice from University lecturers and reduced entry grade offers if students pass the A2B module work.

Gateway Internships – Provide bursaries to University of Birmingham students undertaking internships or work experience they may otherwise not be able to afford.

What Your Support Means to Us

'A2B can be a genuinely life changing opportunity. Your support transforms lives and I cannot thank you enough. Of our class of 2013 graduates, more A2B students achieved a 2:1 than our non A2B students. Many have entered exciting professional careers.'

'Last year, the A2B scheme won national recognition when it was nominated for 'The Times Higher Widening Participation Initiative of the Year'. Thank you for your support, we couldn't have reached this point without you.'

Anne Snell, Access to Birmingham Officer





UNIVERSITY OF BIRMINGHAM SCHOOL

The University of Birmingham School will open its doors to students in 2015. The school will recruit students from four inner-city areas with an acute shortage of secondary school places.

This system will promote inclusiveness and ensure that the school's population is representative of Birmingham as a whole. More than 30% of the pupils will be eligible for free school meals, meaning that they are from backgrounds where progression to higher education is disproportionately low. This commitment will ensure that the school both raises aspirations and promotes social mobility. It will also be a centre for teacher training, ongoing teacher education, and research that will inform national policy and practice. Classes will be taught by experienced teachers with

trainees learning their craft alongside them in a model akin to teaching hospitals.

The value of the The University of Birmingham School has already been recognised by the Department for Education, which has allocated £20 million towards the school's creation and development. The University has invested a further £1 million – in addition to donating the land on which the school is being built – and we are now seeking further philanthropic funding that will allow us to make the most of this once in a lifetime opportunity.



What Giving Means to Me

'The University of Birmingham School provides an amazing, unique opportunity to be involved in a new approach to secondary education. This school will produce a generation of people who have not only genuinely enjoyed their school years but are more likely to go on to be strong, humanitarian and resourceful individuals. They will aim high in whatever they choose to do, whether this is through higher education or entering the workforce. The School's link to the University provides it with an amazing pedagogic base and extraordinary support but, most importantly for me, it will provide children in our community with additional opportunities to academic education, broader social learning, and aspirational role models.'

Hannah Eno, University Staff Member and The University of Birmingham School donor



'I have been chosen to lead the school because of my track record of outstanding performance in education, but I have always been fortunate with the people I have worked with and for. I'm interested in risk-taking and innovation – which is partly why I accepted this job.

Good teachers need to be wise and exercise judgment, and I can now select my own. This is such an exciting and unique opportunity to help shape the future of teaching and learning in our schools and beyond, and I am hugely proud that our ship is leading the fleet.

'It will be a training school for teachers, not an experimental school for children. The value of an education is not how much money you earn, it's what impact you make on the lives of others. I really believe that. These pupils will be creating history.'

Mike Roden, Principal of the University of Birmingham School

What Giving Means to Me

'I believe that everyone should have access to a good education.

The synergies with the teacher training at the University, widening access to the University and the broader work of the University within the community make this an obvious and compelling project to support. I am excited by this project!'

Matthew Hartley, Partner at Allen and Overy, (LLB Law with French, 1989) Donor to A2B, Gateway Internships and the University of Birmingham School



Growing at Birmingham

Emma has gone on to assist the Talent and Development Division at Deutsche Bank.



What Giving Means to Me

Emma James (BA Theology and Religion, 2014)

'The A2B scholarship has had a massive impact on my life. I've started to believe that literally anything is possible! My future looks promising and I will never forget that A2B donors granted me with such a precious gift. I hope that one day I can contribute to scholarships myself. I look forward to embarking upon new challenges, but Birmingham will always have a special place in my heart.'



What Your Support Means to Us

Emma's mother – Helen Willis

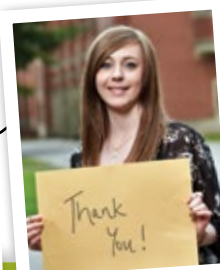
'When Emma was awarded her scholarship, it gave her the added incentive to work hard, as she knew that people

had invested in her success. Emma has grown into an independent and confident person.

'People who support scholarships are amazing! I sincerely hope that donors continue to support A2B, it has had a significant impact on Emma's academic life and future prospects. Thank you for making a huge difference to my daughter's life.'



Laura has gone on to work in corporate finance at accountancy firm Deloitte's.



What Giving Means to Me

Laura Needs (LLB Law, 2014)

'I am very grateful to have had the opportunity of receiving the

A2B scholarship, higher education was an important ambition of mine and the scholarship helped me to achieve this goal.

'I am proud to have graduated from a Russell Group university. My time at Birmingham has been the best three years of my life. I have secured a graduate role at Deloitte's and am sure the skills I have gained at university will set me up to succeed.'



What Your Support Means to Us

Laura's parents – Ray and Linda Needs

'We were delighted when Laura was accepted on to A2B. She had worked hard

and was determined to do her best, and subsequently became the first person from either of our families to go to University. She has become a well-rounded individual with a great circle of friends, and has continued to perform at a high level academically, gaining a 2:1 in Law and Business.'



TO EMPLOYMENT, AND BEYOND!

Your support of our students' professional development helps the Careers Network team provide access to mentoring, bursaries to support work experience, and national-award-winning internships and placements in the UK and overseas.

CN
CAREERS
NETWORK

We demonstrate our commitment to work experience by recruiting students to work as part of the Careers Network team. The 40-strong student engagement team help develop, deliver and promote the above

services to the wider student community: an achievement for which we have been recognised by leading national organisations promoting, supporting and developing quality work experience.

What your support means to me

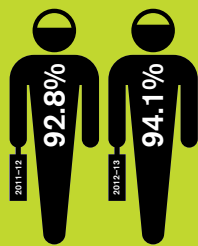


Christopher Hunt was awarded a bursary in 2013 to travel to Sri Lanka. His time overseas helped him to confirm his career intentions and gain real life experience working with people living with mental health conditions.

'Working with SL Volunteers is something that I hope will help me to stand out to employers when I begin looking for paid work or when I apply to the doctorate in Clinical Psychology. I am now sure that a career in mental health is definitely something that I wish to pursue and I will tailor my personal and professional development to achieving this goal.

'I would like to express my gratitude to the donors of my bursary. If not for their financial support then I may have missed out on a fantastic opportunity. The bursary has contributed to what has been an amazing experience that I will take with me in the future and throughout my career.'

Christopher Hunt, Mental Health Volunteer with SL Volunteers, Sri Lanka (July/August 2013) 1st year Psychology student



- The Times Good University Guide 2015 places us **4th** in the UK for career prospects – ahead of Oxford, LSE and UCL
- Our students have undertaken work experience placements in **every continent except Antarctica**
- UoB graduates entering graduate positions has risen from 92.8% in 2011-12 to 94.1% in 2012-13
- The total funding for Gateway bursaries between 2012-2014 was £180,000, of which **£56,000** was received through donations
- This year **107** Gateway Internships went to students across all five colleges

SAVE THE DATE

Leaders of Tomorrow Reception, Birmingham
Hosted by Lee Nuttall of Wragge & Co
12 March 2015
Meet some of the students whose lives you are changing
Details to follow early next year.

**UNIVERSITY OF
BIRMINGHAM**

Edgbaston, Birmingham,
B15 2TT, United Kingdom
www.birmingham.ac.uk

STOP PRESS

Thanks to your support, the University's Circles of Influence fundraising campaign is on track to exceed its £160 million target by July 2015.

With just months to go, don't miss your chance to support Circles of Influence and help change the face of your University for generations to come. To find out more please visit www.birmingham.ac.uk/alumni/index.aspx



Please feel free to contact us for updates, send us a quote about what giving means to you or get involved in shaping our donor communications of the future.
Development, Alumni and Business Engagement Office
0121 414 6679
donorrelations@contacts.bham.ac.uk
www.birmingham.ac.uk/thankyou



Jess, Lauren and Ceri