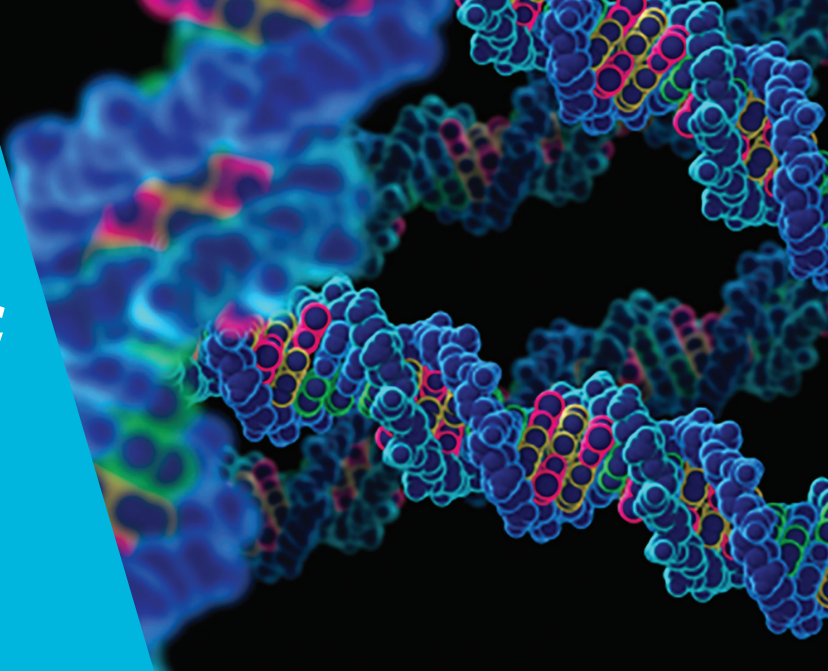


TAPS – University of Birmingham Placement



What is TAPS?

The Teacher Academic Placement Scheme is a unique opportunity for teachers of A level biology in both secondary schools and colleges.

Through partnership with a local university, TAPS provides a unique professional development experience that combines a placement in a cutting edge biochemistry department with a bespoke package of continuing professional development (CPD) created by the National Science Learning Centre.

"The Biochemical Society is committed to inspiring and informing young people in the molecular biosciences. We are delighted to be working with the National Science Learning Centre on this exciting new scheme, which we believe will help teachers to inspire their students back in the classroom, provide valuable information about career paths in biosciences and support students in making the transition in practical and numeracy skills from A level to degree level."

Biochemical Society

Science
LEARNING NETWORK



How will TAPS benefit students?

Participating in the scheme will enable teachers to:

- develop new strategies for supporting students to develop their numeracy and skills in science
- improve awareness of the practical skills needed for biochemical studies, though 'hands on' experiences
- gain valuable information about university application processes and the personal qualities required for successful transition from school/college to university
- better understand the careers available to graduates of biochemistry, helping students to make more informed decisions about their future career paths



BIOCHEMICAL
SOCIETY



Project ENTHUSE

Why should my school participate?

TAPS was developed in partnership between the Biochemical Society and the National Science Learning Network. TAPS aims to support schools to develop long term relationships between schools and local universities.

"I know how much my links with Cambridge University have enhanced my teaching and enabled me to introduce examples of real, cutting-edge research into lessons. This really enriches the teaching of a topic and shows students how the A level basics they're learning helps them to understand what's happening at the research level... for many academics their A levels are a long time ago and the TAPS scheme enables teachers to update those responsible for first year undergraduate teaching with what's happening at A level and what they can expect in terms of preparedness from their new September intake each year."

Ian Harvey, Head of Biology at Hills Road Sixth Form College, Cambridge

Is there a fee to participate?

Participation in the scheme costs £460

The fee includes the arrangement of the placement, the online CPD package and one night accommodation at the CPD event held at the National Science Learning Centre, York (including hospitality).

Is there financial support available?

To support with the cost of the fee and associated cover and expenses, bursaries are available for state funded schools, academies and post-16 providers through support from Project ENTHUSE.

One week bursary = **£900**

The bursary is paid directly to the school on completion of the scheme.

How does my school apply?

Applications for the scheme are made through the TAPS website www.slcs.ac.uk/taps

Search for a university using the placement search option and find the scheme which is located closest to you.

When is the scheme happening?

The scheme is on a rolling programme, with new universities added each term. Applications are normally made a term in advance. However, in some cases the deadline for application may alter depending on the availability of the employer.

Placements available

Please note that placement dates run on work days only, weekends are excluded.

Date	Duration	Company title	Location	Application deadline
15 Feb 2016	1 week	University of Birmingham	Birmingham	15 Jan 2016, 5pm

Project ENTHUSE is a unique partnership of government, charities and employers that have come together to bring about inspired science teaching through the continuing professional development of teachers of science and technicians across the UK. The ENTHUSE Partners are the Wellcome Trust, the Department for Education, BAE Systems, BP, Institution of Engineering and Technology, Institution of Mechanical Engineers, Rolls-Royce and Royal Society of Chemistry.