



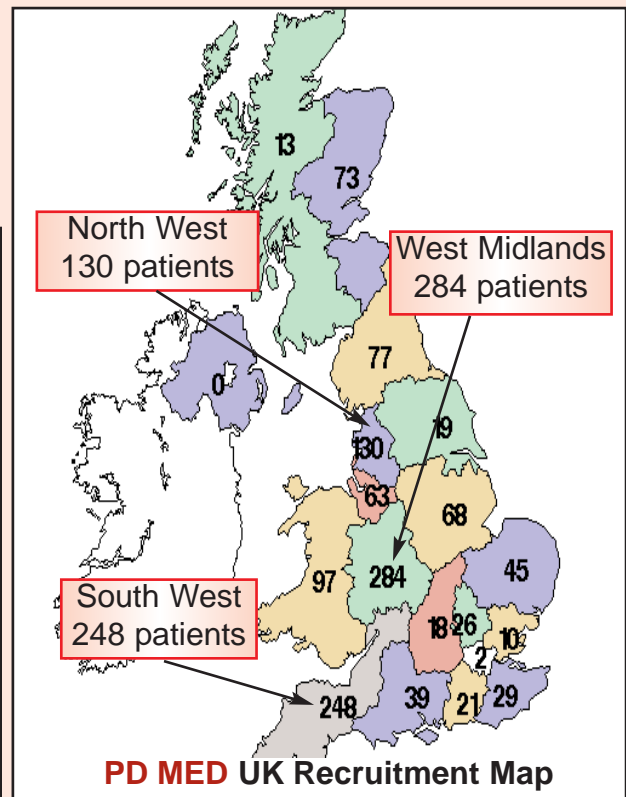
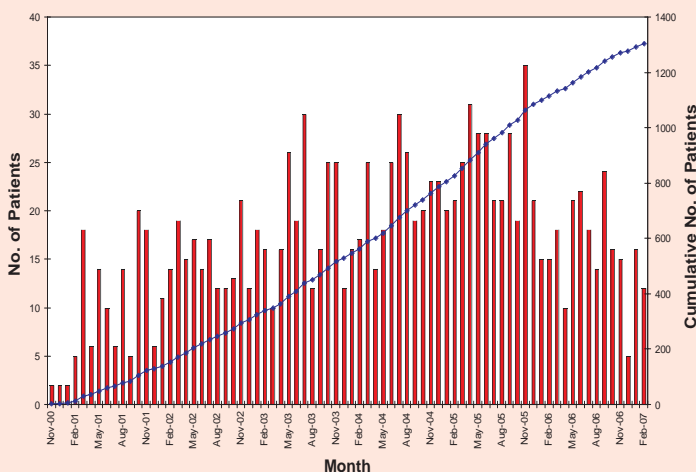
March 2007

PD MED is a large, simple, 'real life' trial that aims to determine more reliably which class of drug provides the most effective control, with the fewest side-effects, for both early and later Parkinson's Disease.

PD MED Recruitment Update - 1000 patients in Early randomisation...!

Congratulations to Dr Lennox and his team at Addenbrookes Hospital, Cambridge, who have recently entered the 1000th patient in to the Early disease arm of the PD MED Trial. They will shortly be receiving a special prize for their efforts, as will the PD team at Torbay hospital who have been the top recruiting centre for the past quarter (5 patients entered in since the start of 2007). We have also passed the 300 patient mark in the Later disease recruitment arm and the recruitment total now stands at 1309 patients with 1007 Early disease patients and 302 Later disease patients. However, we are still falling some way short of reaching our target of 30 patients each month and need to try and remedy this as soon as possible. Even if you see relatively few patients with PD, please consider **PD MED** for all who are eligible for the trial. With over 100 hospitals taking part, just a few extra patients per hospital would make a real difference. We have also recently sent out flagging sheets to all centres with patients who are eligible for an Early-to-Later re-randomisation. Please try and get these patients re-randomised into the Later disease arm if you consider them suitable.

PD MED Monthly & Cumulative Recruitment



Park Grange - Home of the University of Birmingham Clinical Trials Unit

PD MED Team Contact details

Trial Co-ordinator: Tom Boodell
Trial Administrator: Neil Winkles
Data Manager: Francis Dowling
Address: University of Birmingham Clinical Trials Unit, Park Grange, 1 Somerset Road, Birmingham, B15 2RR.
Randomisation Number: 0800 953 0274
Tel: 0121 687 2315/2308 Fax:0121 687 2313
E-mail: pd-trials@bham.ac.uk

The Annual **PD MED** Collaborators' Meeting will be taking place at the Jurys Inn Hotel and Botanical Gardens in Birmingham on 22nd-23rd May 2007. Guest speakers include Professor Tony Schapira, Consultant Neurologist at the Royal Free Hospital, London who will be discussing Neuroprotection trials in PD, Dr Ray Chaudhuri, Consultant Neurologist at Kings College Hospital and Piers Kotting, General Manager of the Dementias and Neurodegenerative Diseases Research Network (DeNDRoN). As well as a stimulating programme covering the latest developments in **PD MED** and other



ongoing research, the meeting offers plenty of opportunity for mingling with colleagues and enjoying the beautiful surroundings. The meeting will begin on the evening of the 22nd with a welcome session and conference dinner at the Jurys Inn Hotel, Broad Street, followed by a full day's programme at the Botanical Gardens on the 23rd. Last year's meeting received very positive feedback from the 120 people attending and we hope that you will be able to join us in making this year's meeting an even greater success. (A full copy of the meeting programme is available at

If you wish to attend this years meeting and haven't already returned a Collaborators' Meeting reply slip, please let us know as soon as possible.

DeNDRoN Update



UKCRN Frequently Asked Questions: A set of Frequently Asked Questions (FAQ) is now available on the UKCRN website. The information deals with many issues relevant to networks including which research areas covered by the topics, the role of Clinical Studies Groups and how trials are adopted, managed and funded: <http://www.ukcrn.org.uk/index/about/faqs.html>

5 Year MMSE Forms

One important objective of **PD MED** is to investigate whether the risk of developing dementia is related to the class of drug used to treat PD. This requires an MMSE assessment of the patient's cognitive function at 5-yearly intervals. Many patients are now reaching their 5-year follow up point and you are reminded to undertake an MMSE assessment when they attend their 5-year clinic appointment. We include an MMSE form when we send out the 5-year Annual Review form and it is essential that these MMSE assessments are done for all patients to avoid any possibility of bias from incomplete follow-up.

Multidisciplinary care in Parkinson's disease and Parkinsonism: From Science to Practice Royal College of Physicians - 04/07/2007

The 12th National Conference on Multidisciplinary care in Parkinson's disease and Parkinsonism will be held on Wednesday 4th July at the Royal College of Physicians in London. This year's conference emphasises the 'from science to practice' theme, recognising that, while we all have our own area of expertise, effective team work requires an understanding of what is happening within other disciplines and how ideas are changing. More information and a full programme can be found at: http://www.mepltd.co.uk/conference_pd_2007.html



Thank you again for taking part in the **PD MED trial.**

PD MED is funded by the NHS through its Health Technology Assessment research programme. It is supported by the Parkinson's Disease Society, the European Parkinson's Disease Association and the Parkinson Disease Specialist Nurse Association.

