

# eGFR-C Newsletter

#21 Summer 2019

www.birmingham.ac.uk/eGFR-C



## 6 months of follow up left!

There are 6 months of follow up left, and 273 more 3 year visits to be completed and put on the database. **We're very nearly there!**

You might have noticed that we've started sending queries for data cleaning on some of the sample data, and we've done some of the baseline data cleaning too. There will be further batches of Data Clarification Forms incoming very soon...

Please try to help with these as quickly as possible to help us keep to our analysis timelines!



## Message from the Trial Manager:

As most of the research nurses dealing with the study office will surely know by now, **data manager Dean Ali has sadly left the team.** We'd like to think it wasn't the thousands of iohexol data points that he entered onto the database this spring that drove him away...

In the meantime, please direct any general queries to [eGFR-C@bham.ac.uk](mailto:eGFR-C@bham.ac.uk), and urgent queries to [r.ottridge@bham.ac.uk](mailto:r.ottridge@bham.ac.uk). Please be understanding if there's any delay!

## BVS publication in print

**Our first results are in press** and available online in Kidney International here:

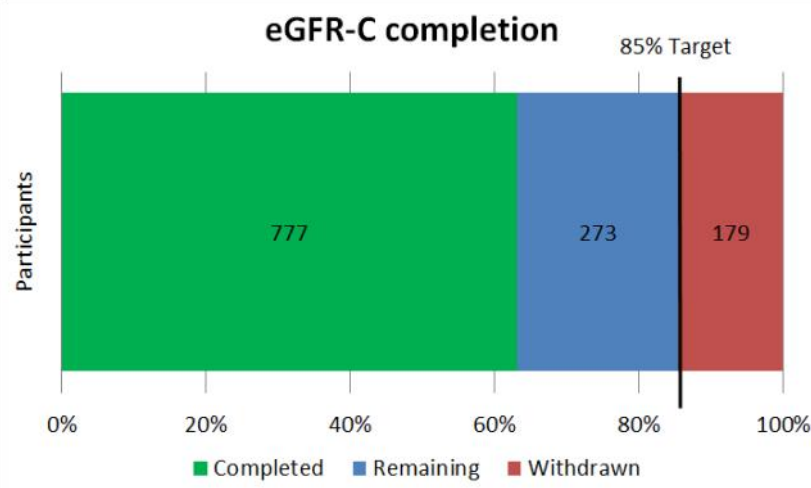
<https://doi.org/10.1016/j.kint.2019.02.021>

Next up for analysis this year will be our baseline accuracy and precision analyses.

## CRF completion table

777 final CRFs have been returned, and overall we have an excellent average of 96% CRF return rate. Our leaders this month in promptly returning data are:

1. Leicester - 100% of due CRFs returned
2. Derby - 100%
3. Birmingham - 99%
4. East Kent - 99%
5. Salford - 93%
6. King's - 87%



### Study Contact details

#### eGFR-C Chief Investigator

Dr Edmund Lamb  
East Kent Hospitals  
University NHS  
Foundation Trust  
elamb@nhs.net

#### Trial Manager

Ryan Ottridge  
Birmingham Clinical Trials  
Unit  
eGFR-@trials.bham.ac.uk

#### Telephone

0121 415 9125

#### Fax

0121 415 9135

eGFR-C is funded by the National Institute for Health Research's Health Technology Assessment Programme and sponsored by the University of Birmingham and East Kent Hospitals University NHS Foundation Trust.

The views expressed in this newsletter are those of the authors and not necessarily those of the NIHR, NHS, or the Department of Health.



## Study completion vs study drop out - July 2019

We need a thousand or more completed iohexol tests at 3 years for 90% power. We're at 777, and have 273 more 3 year visits yet to be completed. But these 1050 potential iohexol tests don't include failed tests, haemolysed samples, iohexol injected subcutaneously rather than intravenously... Taking an expected failure rate into account, we have a maximum 15% drop out rate, as shown by the black lines on the graphics for each site below. **Every patient counts!**

