

eGFR-C Newsletter

#20 Spring 2019

www.birmingham.ac.uk/eGFR-C



eGFR-C office closure: Easter 2019

The study office will be closed due to University of Birmingham closed days from Thursday 18th April 17.00 till Thursday 25th April 09.00. In the event of any SAEs, please email r.ottridge@bham.ac.uk and follow the instructions on who to contact.



Message from the Chief Investigator: Dr Edmund Lamb

We've only got **9 months of follow up left** until every patient will have completed the study.

The drop out rate at 3 years is at **exactly 15%**! There's only a handful more dropouts we can

afford. Please keep doing all you can to get in touch with those patients who are hard to contact or bring into clinic, and please let us know if there's anything we can do to help you over the last months of the study. **Thanks for helping us get this far, and please remember to pass on our thanks to all of our patients. The study wouldn't be such a success without you and them!**

BVS publication imminent

Our first results will be published shortly!

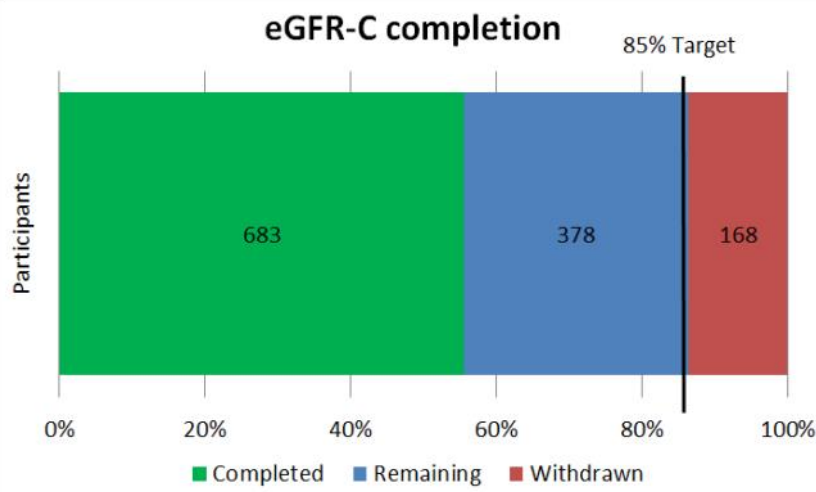
After some minor edits, the results from the Biological variation study were accepted for publication in **Kidney International** in February. A link will be circulated around the eGFR-C study group when the paper is published.

Next up for analysis this year will be our baseline accuracy and precision analyses.

CRF completion table

683 final CRFs have been returned, and overall we have an excellent average of 97% CRF return rate. Our leaders this month in promptly returning data are:

1. Leicester - 100% of due CRFs returned
2. Derby - 100%
3. Birmingham - 99%
4. East Kent - 99%
5. Salford - 93%
6. King's - 90%



Study Contact details

eGFR-C Chief Investigator

Dr Edmund Lamb
East Kent Hospitals
University NHS
Foundation Trust
elamb@nhs.net

Trial Manager

Ryan Ottridge
Birmingham Clinical Trials
Unit
eGFR-@trials.bham.ac.uk

Telephone

0121 415 9125

Fax

0121 415 9135

eGFR-C is funded by the National Institute for Health Research's Health Technology Assessment Programme and sponsored by the University of Birmingham and East Kent Hospitals University NHS Foundation Trust.

The views expressed in this newsletter are those of the authors and not necessarily those of the NIHR, NHS, or the Department of Health.



Study completion vs study drop out - March 2019

We need a thousand or more completed iohexol tests at 3 years for 90% power, meaning a maximum 15% dropout rate. Withdrawals, deaths, and patients lost to follow up are dropouts. On the graphics below, we need every site to have their green bar (patients completing) reach the black 85% line before their red bar (patients dropping out) does. Some sites have passed the line or may do soon, but every iohexol test completed will make our results more reliable.

