

# Kidney Test Research News

2019  
Newsletter

#7 Winter 2019

## One year left!

More than half of our participants have had their final visit. This is the 3 year visit, where everyone has a long kidney test again. This time next year, all of our participants will have finished.

**It's really important for the study that as many people as possible come back for this final visit!**

With the blood samples from this final long kidney test, we hope to find out which blood test is best at measuring how people's kidney function changes over time.

**Thank you everyone for the study visits you've come to so far - you've made a really valuable contribution to this NHS project. Please remember your last visit if you haven't had it yet!**



Study Update  
Winter 2019

6 NHS trusts  
recruited  
participants to the  
eGFR-C study

1249 patients have  
joined

We have collected  
75,000 blood and  
urine samples for  
processing, storage  
and analysis

There's another 25,000  
samples left to  
collect!

If you have any questions  
about the eGFR-C study,  
please email  
[eGFR-C  
@trials.bham.ac.uk](mailto:eGFR-C@trials.bham.ac.uk)

## PARTICIPANTS COMPLETING eGFR-C

41  
  
King's, London

99  
  
Derby

99  
  
Birmingham

103  
  
Salford

105  
  
Leicester

181  
  
East Kent

## The eGFR-C study

Every year, the NHS does more than 50 million blood tests to measure people's kidney function.

About 1 in 15 people need their kidney function checked regularly. But it's not just kidney patients - anyone going to their GP or hospital might have this test.

The eGFR-C study is an important project that will find out the best way to measure kidney function for patients in the UK. 1249 people joined the study and we have a year left to run.

**Thank you for all your time and blood samples so far - your contribution will help NHS patients in the future. We couldn't do our research without you!**

# Kidney Test Research News

www.birmingham.ac.uk/  
eGFR-C

## Who is in the study?

Over 3 years, 1249 patients joined the eGFR-C study from 6 NHS Trusts.

Just over half are over 65, and just over half are men.

The ethnicity of our patients closely matches the UK population: 87% are White, 5% South Asian, and 5% Black.

To recruit all of our participants, research nurses at our six sites checked and approached nearly 30,000 patients to take part!

Most patients came from hospital clinics, but Birmingham, Derby, King's and Leicester also recruited participants from GP clinics in their areas.

## How we use your details

We have included a leaflet with this newsletter. It explains in detail how the study team uses your details and medical data.

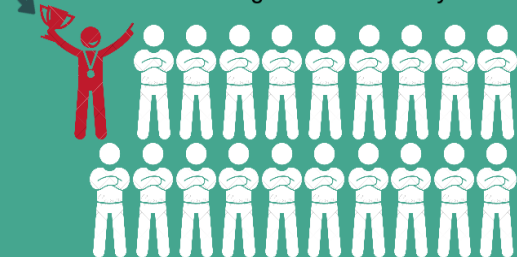
This is something that we have to tell all of our participants about after the GDPR data protection law started last year. GDPR stands for General Data Protection Regulation.



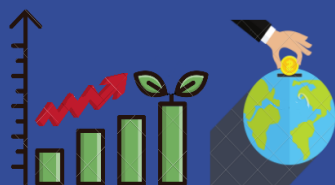
## OUR PARTICIPANTS' CONTRIBUTION IN PICTURES

Of the 29,845 people approached for this study...  
You are one of the 1249 individuals that **choose** to potentially help millions

This is you! The one in 20! The 5% of people that decided to go above and beyond



We are almost at the finish line, please continue to support this study!



Your investment and sacrifice of time, energy and commitments will have benefits for the NHS for years to come!

The University of Birmingham is the “data controller” for the eGFR-C study. This means we are responsible for keeping your details safe and using them properly.

So we can do the study properly, we will keep identifiable information from participants for at least 5 years after the study has finished. Your local NHS Trust will do the same.

**Nobody at the University of Birmingham - or anyone else that we might work with - can access your personal details except people who need to check that the data is being entered and recorded correctly.**

We may share medical data in the future, but we won't share anything that can identify any patients. This information will only be used for medical research: it won't be used to contact you.

Our contact details are on the right if you'd like to get in touch for more details.

### eGFR-C Chief Investigator

Dr Edmund Lamb, East Kent Hospitals University NHS Foundation Trust

The Chief Investigator is responsible for running and reporting this research

### eGFR-C Study Office

Birmingham Clinical Trials Unit,  
Public Health Building,  
University of Birmingham  
Birmingham, B15 2TT  
eGFR-@trials.bham.ac.uk

eGFR-C is funded by the National Institute for Health Research's Health Technology Assessment Programme and sponsored by the University of Birmingham and East Kent Hospitals University NHS Foundation Trust

The views expressed in this publication are those of the authors and not necessarily those of the NIHR, NHS or the Department of Health