

Financial Services Consumer Panel
An independent voice for consumers of financial services

Advice and guidance for pension decisions: is it enough?

Sue Lewis – Consumer Panel Chair
enquiries@fs-cp.org.uk

Introduction

- 11.6 million people in the UK over 65, projected to rise to 14 million in the next 20 years.
- There are around 900,000 people currently reaching the age of 55 every year, the earliest they can exercise pension freedoms.
- ‘Decumulation’ is a big challenge – new decisions, complex choices.

What can people do?

- Leave pot untouched
- Use all or part of pension pot to buy an annuity
- Get an adjustable income (drawdown) – decide how much to take out and when
- Take cash in chunks (drawdown) – take smaller sums of money until pot runs out
- Take whole pot in one go
- Defined benefit to defined contributions pension transfer
- 25% tax free lump sum payment

Making decisions is hard

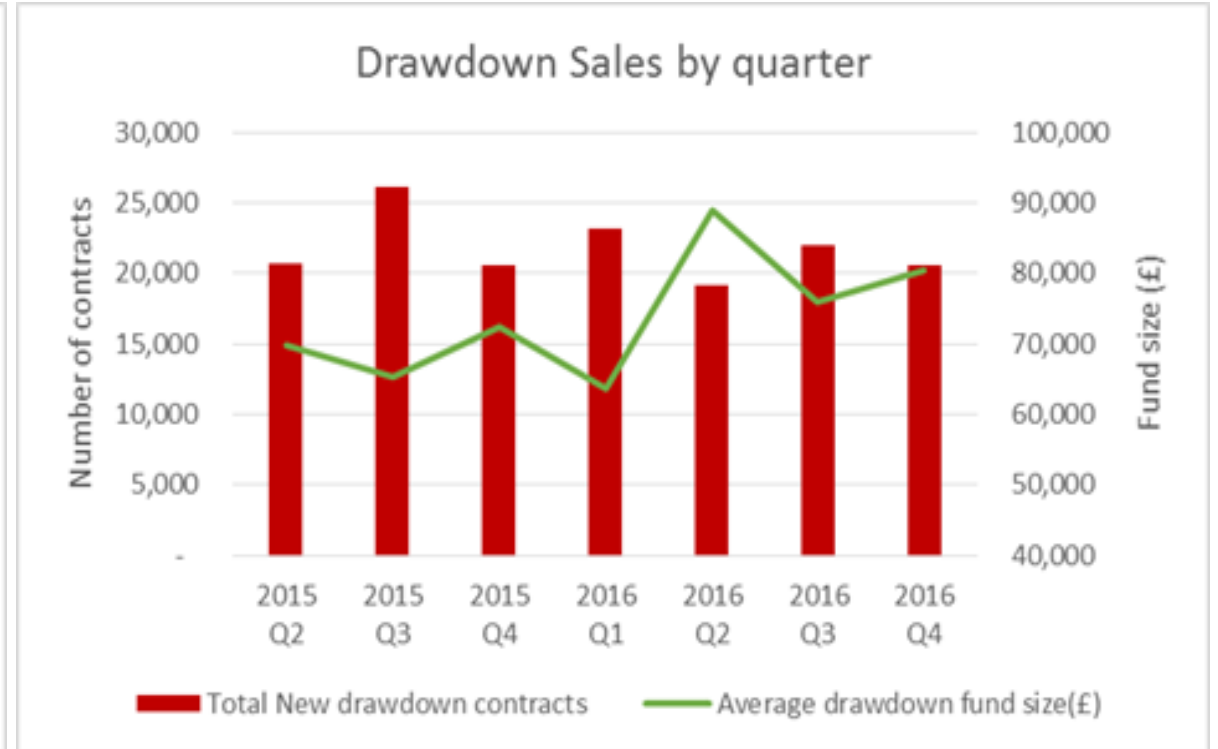
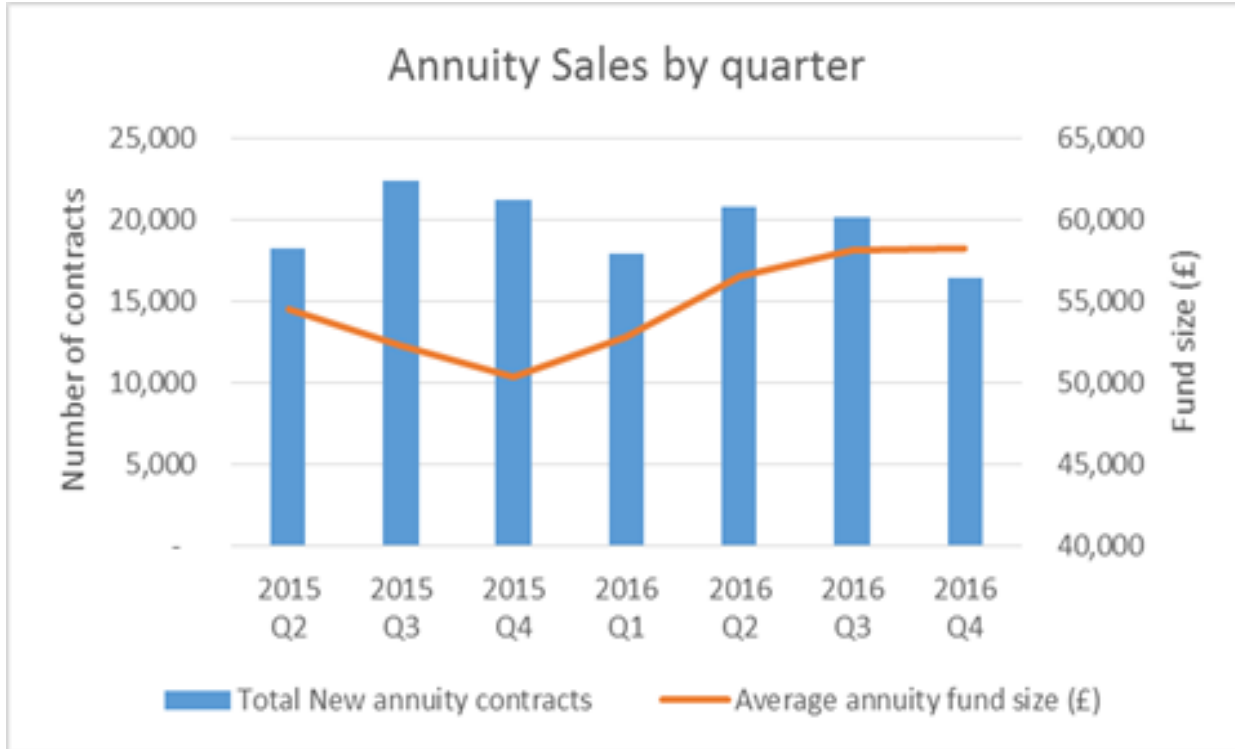
- Consumers are keen to do the ‘sensible’ thing
- Few are confident in their ability to navigate the options available
- Most are fearful that a wrong decision could have a serious impact on their financial well-being
- Multiple sources of information, product complexity, opaque charges and economic uncertainty can all add confusion
- Leads to ‘analysis paralysis’ – no decision or taking what is on offer from provider

Source: Ignition House, New Choices Big Decisions

Financial Services Consumer Panel

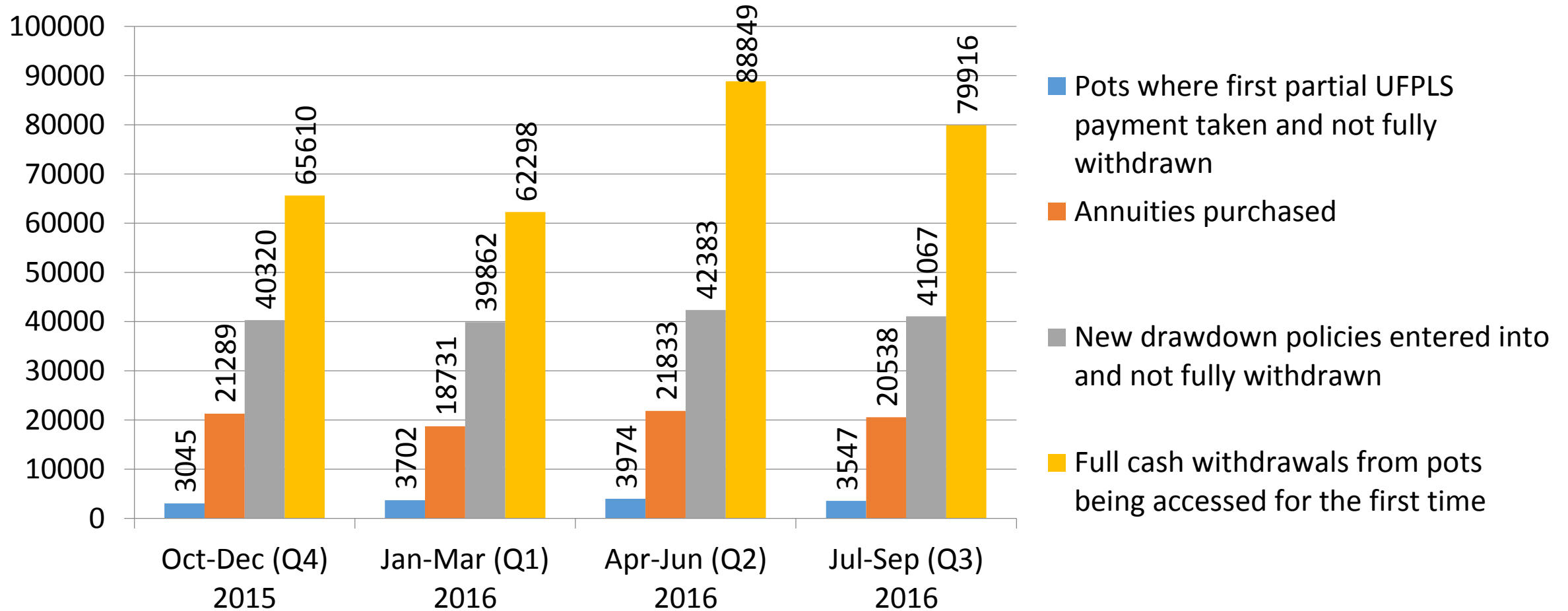
AN INDEPENDENT VOICE FOR THE CONSUMERS OF FINANCIAL SERVICES

What do people do?



Source: ABI retirement income factsheet

A large number withdraw their entire pot



Source: FCA data bulletin issue 8

Financial Services Consumer Panel

AN INDEPENDENT VOICE FOR THE CONSUMERS OF FINANCIAL SERVICES

Entire pot withdrawals

	Q2 2015	Q3 2015	Q4 2015	Q1 2016	Q2 2016	Q3 2016
Total withdrawn	Just over £1.4bn	£1.27bn	£860m	£750m	£860m	£767m
Average payment size	£14,500	£14,000	£12,000	£19,000	£14,100	£13,900

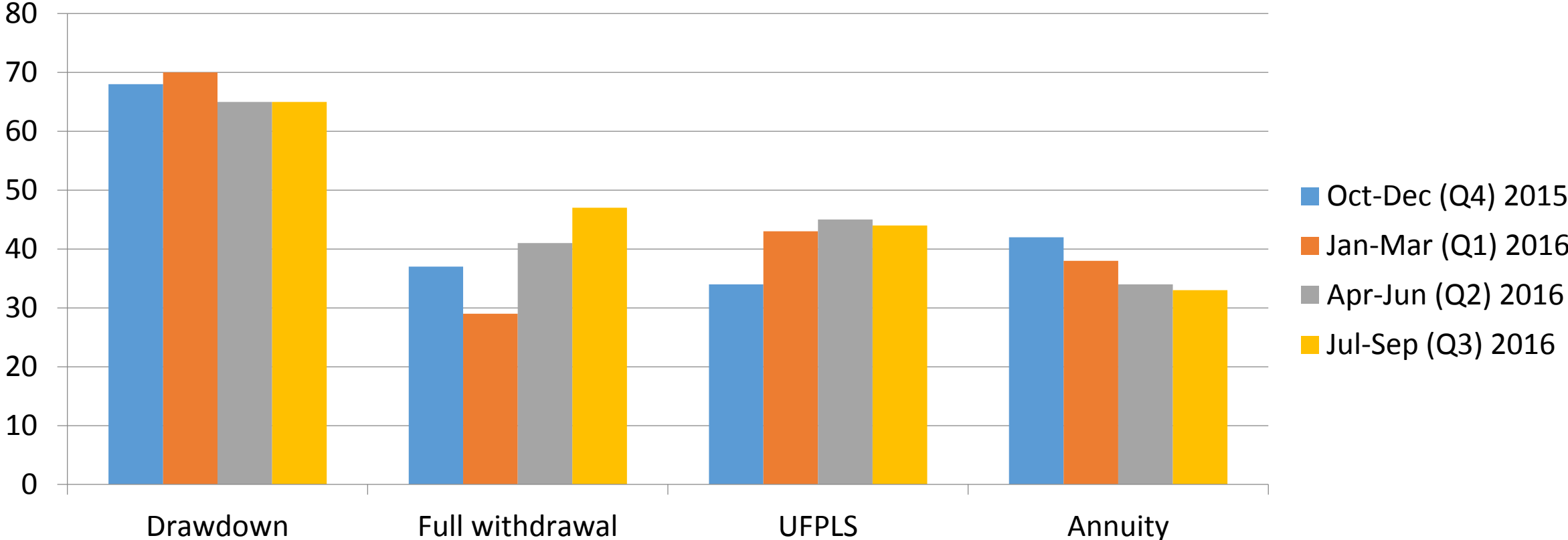
Source: ABI retirement income factsheet

What help is available?

- The Pensions Advisory Service
- Money Advice Service
- Pension Wise
- Regulated advice
- Pension provider
- Online commercial guidance ('execution only' sales)

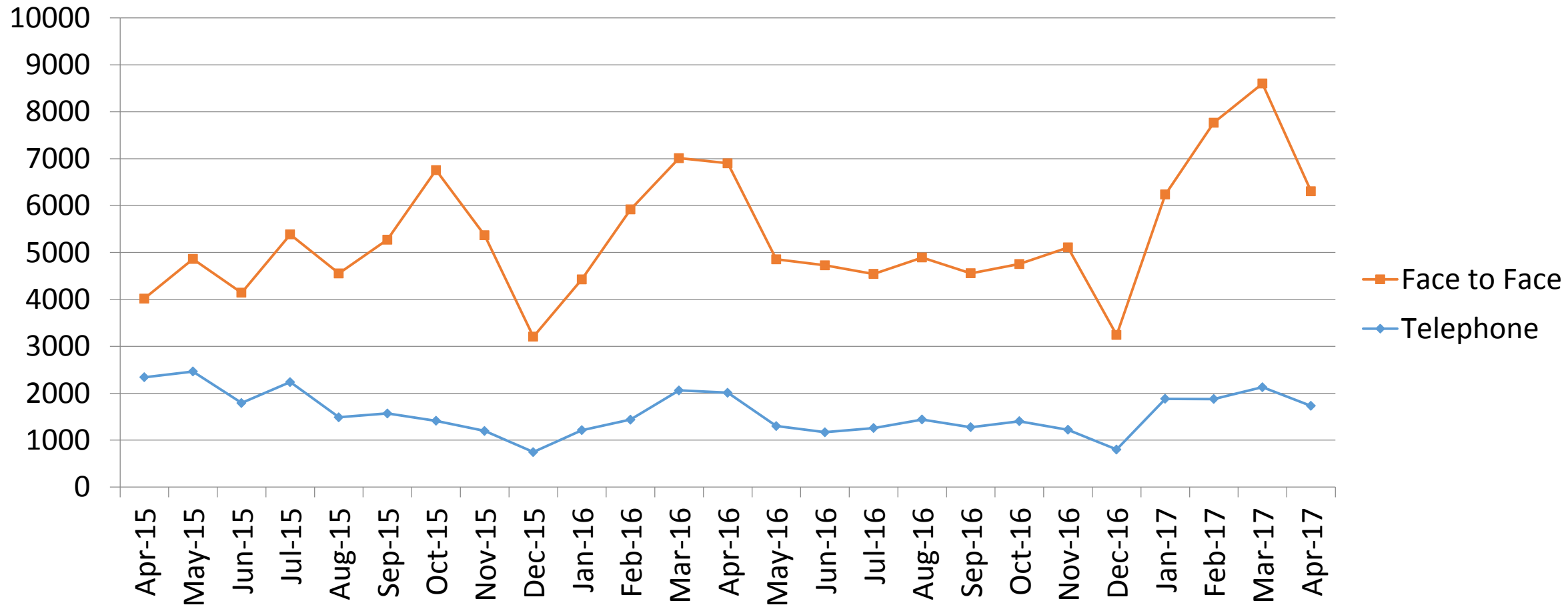
Use of regulated advice

Percentage of product purchases and withdrawals where provider recorded use of a regulated adviser



Source: FCA data bulletin issue 8

Consumers using Pension Wise



Source: DWP Pension Wise dashboard

Financial Services Consumer Panel

AN INDEPENDENT VOICE FOR THE CONSUMERS OF FINANCIAL SERVICES

Are people making the right decisions for them?

- Fewer people shopping around
- Four fifths of people who do not shop around for an annuity could have got a better rate on the open market
- DIY investing – lack of transparency on costs and redress.

Source: FCA

FSCP: Online investment and advice services, the Consumer Experience

What next?

- Earlier engagement with Pension Wise – a job for the new Single Financial Guidance Body (SFGB)
- High quality guidance – holistic, impartial, sales-free
- ‘Smart’ defaults
- Clearer information for ‘execution only’ investment
- Evaluation of pensions freedoms