



UNIVERSITY OF
BIRMINGHAM



Become one of our 125th Anniversary Chairs

125th Anniversary Chair
Information Pack

125
years

We advance
We activate

birmingham.ac.uk

Contents

Welcome from our Vice-Chancellor and Principal	03
Join us as a 125 th Anniversary Chair	04
Global Talent Fund	05
About the University of Birmingham	06
Our community	07
Research and innovation	09
Our research challenge themes	10
Student experience and learning	12
Our global outlook	14
Our commitment to civic engagement	16
Enjoy living in the UK's most diverse city	18
More information and how to apply	20
125 th Anniversary Chair role profile	21

Welcome from our Vice-Chancellor and Principal

This year we celebrate 125 years since Queen Victoria granted a Royal Charter to establish our university. To mark this milestone, we have launched a major investment in research that will lead to the appointment of 125 Anniversary Fellows and Chairs. This initiative reflects our long-term commitment to attracting and supporting outstanding academic talent across disciplines.

The programme is now well established. More than 25 exceptional researchers have already joined us in Birmingham, with more appointments to follow. They are becoming part of a strong, diverse cohort that reflects our values of excellence, collaboration and innovation.

Birmingham is a world-leading research-intensive university. Our 125 Anniversary appointments build on a sustained investment in people and facilities, strengthening our academic environment and advancing our research ambitions.

Looking ahead, our strategy for 2030 sets a clear direction for the University's future. We aim to enhance the quality, reach and influence of our research, double our research income and position Birmingham among the top 50 universities globally. The researchers joining us will play a vital role in helping us realise this vision.

As a well-established researcher with growing international recognition in your discipline, at Birmingham you can shape the future of your field. In so doing, you will be building on the achievements of our great University, where ten alumni and staff have been awarded Nobel Prizes.

Our university continues to go from strength to strength, achieving its highest QS World University Ranking in a decade (76th globally and 11th in the UK) and rising to 16th in the Times and Sunday Times Good University Guide 2026, where we were Highly Commended as University of the Year. We are also proud to be recognised as the UK's number one university for attracting the top graduate employers for the second consecutive year. These achievements reflect our world-class reputation for research and teaching excellence, and our commitment to offering an outstanding experience for students and staff alike.

This is an exciting time to join a university on the rise. If you share our values and ambition, we would be delighted to welcome you.



Professor Adam Tickell
Vice-Chancellor and Principal



Join us as a 125th Anniversary Chair

In these appointments, we will provide you with the protected research time, resources, and support you need to advance your research. You will also benefit from our many connections with partners in academia, industry and policy, and with our multidisciplinary community of academics.

As someone with an outstanding track record in exemplary research, evidenced by high quality impact and funding, this permanent appointment will offer you a sustained focus on advancing your research. With a competitive salary, relocation expenses, and a sector leading start-up package to establish your research at Birmingham, this is a stand-out opportunity.

We are seeking diverse talent from across the world to help us make new discoveries and tackle global challenges. As an emerging leader in your field, this is a unique opportunity to shape your career at a prestigious institution. You will work with the brightest minds at the forefront of different subject areas, to tackle the most pressing global challenges, have the opportunity to collaborate across our strong networks of partners, and to be mentored and supported by senior leaders at the University.

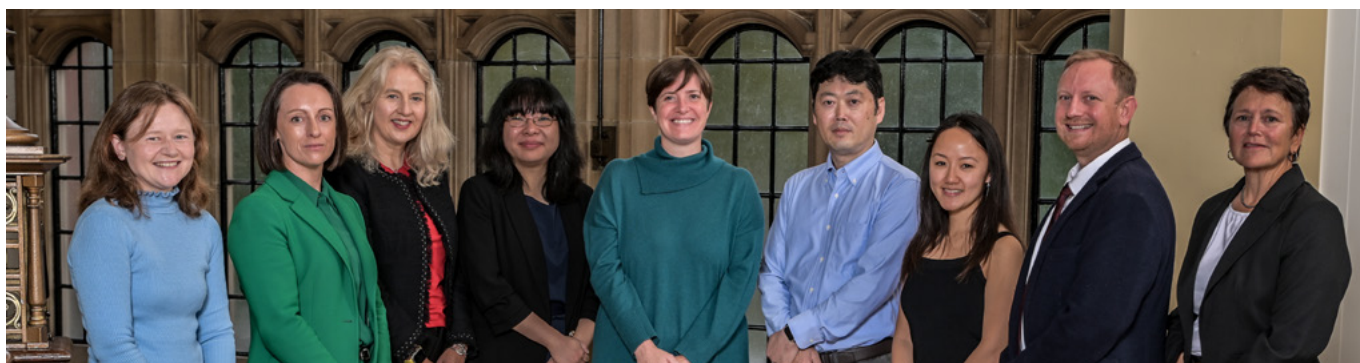
Our University is home to a vibrant community of individuals, and we continue to seek different perspectives from a broad range of academics. We are continuing to diversify our workforce and particularly encourage applications from women, and people from minoritised ethnic groups.

Birmingham is an outstanding place to live and carry out your research. We are a family friendly employer, focused on supporting staff to develop and grow their career with us. Find out more about our range of [staff benefits](#).

You will be critical in driving the excellence of our research to make an even greater difference to the world around us. Join us as we celebrate our 125th anniversary, and be part of our ambitious, exciting future.

Learn more about our appointed anniversary researchers by visiting the [125th Anniversary Fellows and Chairs directory](#).

Our PVC (Research) with our first cohort of 125th Anniversary Fellows & Chairs



Global Talent Fund

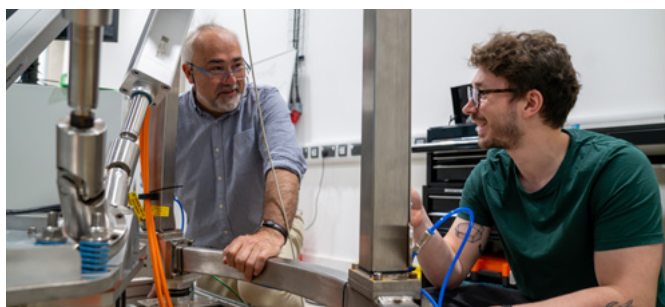
We are proud to be one of just twelve UK universities and research organisations selected by the UK Government to deliver the £54 million Global Talent Fund, announced by the Department for Science, Innovation and Technology (DSIT) in July 2025.

Through this award, we have received £4.35 million to attract exceptional international researchers and their teams, strengthening our global research community and building on our expertise in areas such as life sciences, technology, and defence. This investment recognises Birmingham's growing international profile and supports our ambition to deepen collaboration and deliver research with global impact.

The Global Talent Fund enables us to enhance research across eight priority sectors aligned with the UK's industrial strategy:

- Advanced manufacturing
- Clean energy industries
- Creative industries
- Defence
- Digital and technologies
- Financial services
- Life sciences
- Professional and business services

While the Fund provides targeted support for these areas, our 125th Anniversary Fellows and Chairs initiative spans the full breadth of academic disciplines – reflecting Birmingham's commitment to attracting and empowering world-leading researchers whose ideas will drive discovery and impact across our University and beyond.



About the University of Birmingham

In 1900, we were founded on the radical vision of Joseph Chamberlain to provide a university for the people of Birmingham - 'a great school of universal instruction... taking all knowledge in its province'. England's first civic University, we were established as a place where students and staff from all backgrounds are accepted on an equal basis. This philosophy has defined and shaped us as an institution ever since and remains even more important today.

Over the last 125 years, we have grown our civic roots to become a global institution that extends our reach across the world - welcoming the best to Birmingham and taking the best of Birmingham to the world.

Ranked in the top 100 universities globally, we are part of the Russell Group and a founding member of the Universitas 21 global network of research universities. The quality of our research is amongst the best of UK universities, with the 2021 Research Excellence Framework (REF) results ranking us 13th in the UK and 10th in the Russell Group for Grade Point Average.

Combining an original 'redbrick' heritage with an ambitious transformation agenda, we recently opened an international campus in Dubai, alongside offices in India and China. We have invested £1 billion in our facilities and campus over the past ten years, spanning student experience, teaching and learning, and importantly, in world-leading research facilities.

An anchor institution for the UK's diverse, youthful, and dynamic second city, we are one of the region's largest employers. We played a central role in the success of the Birmingham 2022 Commonwealth Games, and value our partnerships with local organisations, including our Civic University Agreement with Birmingham City Council and the West Midlands Combined Authority.

Our [Birmingham 2030 Strategic Framework](#) sets out our goal to become a top 50 global institution. With world-class research and outstanding global education as our core mission, we will strive to increase the volume and quality of our research to make an even greater difference to the world around us.



Aston Webb building

125 Anniversary Concert



Our community

We are committed to fostering a welcoming, inclusive community where everyone can thrive. Our diversity of backgrounds, disciplines, and perspectives is a vital source of strength — fuelling the ideas, innovation, and debate that sit at the heart of our academic mission. We therefore seek to attract talented people from a wide range of fields and from across the world.

At Birmingham, we teach and carry out research across the full breadth of academic disciplines. This creates a vibrant community and provides multidisciplinary opportunities for research and education. Our truly international community is made up of more than 8,000 staff, 38,000 students and over 400,000 alumni.



Our student community is not only one of the largest of any UK university - it's also highly diverse. 86% of our home undergraduate students come from state schools. 43% are from black, Asian, or other minority ethnic backgrounds, while 36% are the first generation of their family to attend university.

Our Equality, Diversity and Inclusion Strategy 2025–2028 is structured around four interlocking themes:

- Challenging barriers to equality by reducing student gaps, addressing pay inequalities and diversifying leadership.
- Creating inclusive learning and working cultures where everyone can thrive.
- Embedding accessibility across campuses, systems and practices.
- Integrating EDI into structures, strengthening governance and accountability.



We hold a Bronze Race Equality Charter Award and a Bronze Athena SWAN Charter Award at an institutional level, with the majority of our Schools holding Bronze or Silver Athena SWAN awards.

Our most recent staff survey shows levels of engagement and pride most employers would be delighted to achieve. Committed to building on this, we have made '[people and culture](#)' a core pillar of our Birmingham 2030 Strategic Framework.

We also support the career development of our academic staff through our [Birmingham Academic Career Framework](#) that inspires, develops and maintains an academic culture of intellectual stimulation and high achievement.



Research and innovation

We have a global reputation for high-quality fundamental and translational research.

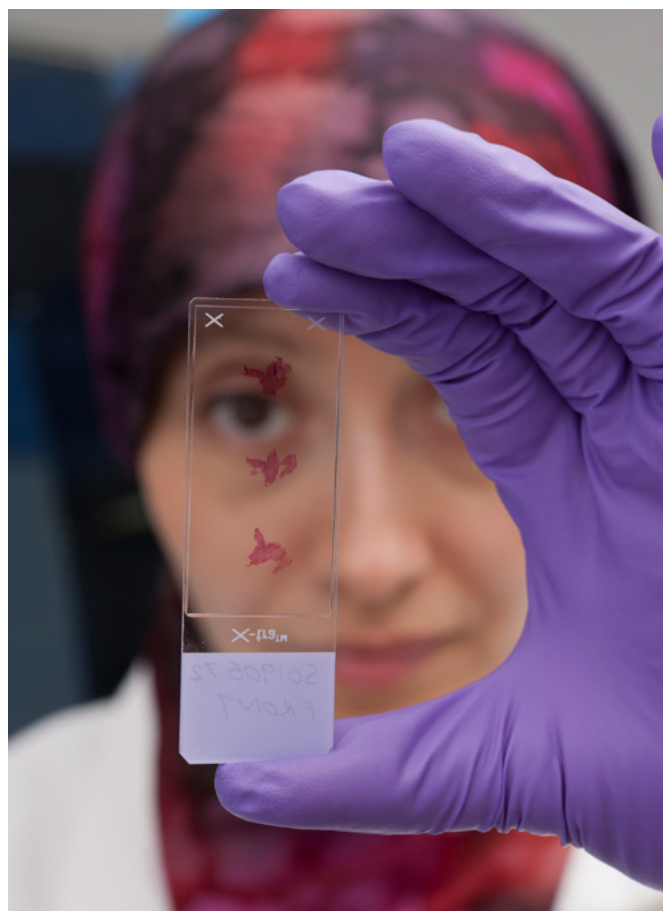
Our academic community achieves remarkable results and impact. They have been at the heart of some of the greatest scientific discoveries of recent times, from the discovery of the Higgs boson particle, to detecting gravitational waves, and most recently making a major contribution during the Covid-19 pandemic.

For a UK university, our areas of research excellence stand out as highly comprehensive, with a submission to 28 out of a possible 34 Units of Assessment in REF 2021. Our 13th position in the subsequent rankings, placed us amongst the UK's best universities. More than 50% of our research was recognised as world leading, and our 12-place increase was the largest rise achieved by any Russell Group university.

The total value of our research funding has grown, reflecting our continued rise in quality. We now have a portfolio of over 2,800 live projects with an award value to the University of over £900 million.

Across our campus, stretching into the city beyond, we have built a suite of innovation sites and strategic assets which are helping us to develop and test novel technologies in our areas of technical excellence including, energy, engineering, and life sciences. Our extensive cultural artefacts and collections, across religion, history and the arts, are helping bind us more closely to our communities.

Our strong performance in REF 2021 reflects the depth and quality of our collaborations – spanning industry, healthcare, education, and the cultural sectors. Through partnerships across our region and around the world, we are delivering innovative solutions to major global challenges. Reflecting this ambition, our research is organised around five challenge-led themes: Global Health, Thriving Planet, Connecting Cultures, Life-Changing Technologies, and Fairer World.

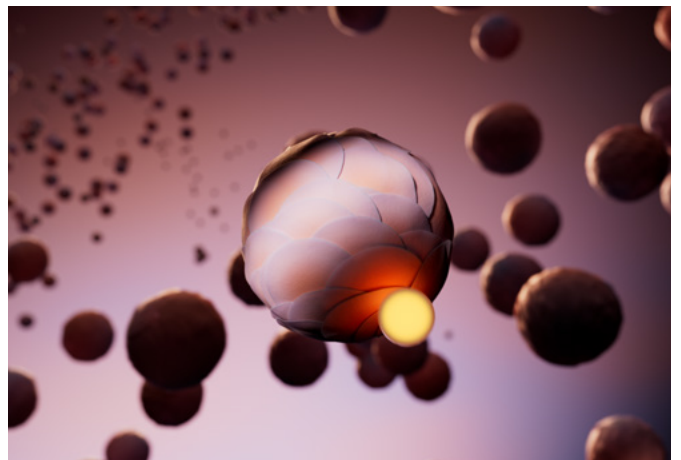


Our research challenge themes

Our culture of collaboration fuels solutions to the major issues of today. Guiding our focus and drawing across our vast expertise and resources, our five research challenge themes showcase our pioneering breakthroughs, multidisciplinary collaboration, and significant global impact.

Global Health

Through complex clinical trials, the development of personalised treatments and the delivery of early interventions, we are improving the health and well-being of people and communities across the world.



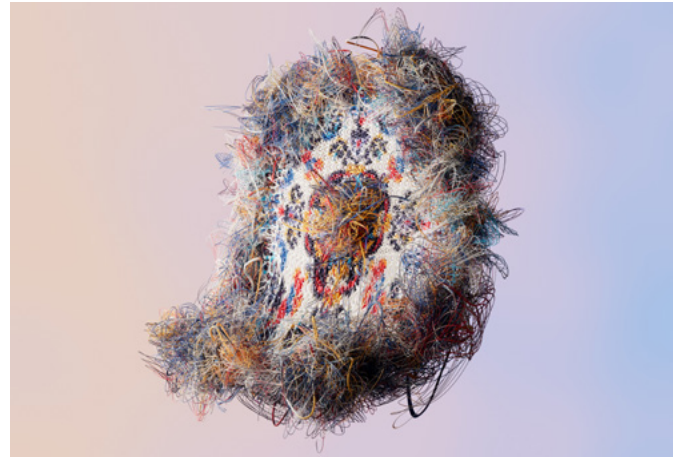
Thriving Planet

We are diagnosing the destructive impact of anthropogenic climate change and advancing the scalable clean technologies needed to ensure a sustainable future for people and planet.



Connecting Cultures

We are fostering intercultural inclusivity and communication by understanding how different cultures shape the world, transforming lives with innovative projects that celebrate diversity and bridge gaps.



Life-Changing Technologies

We are applying materials science to global challenges, sensing and communicating with the world around us, transforming lives and livelihoods.



Fairer World

We are committed to addressing the structures, policies, and decisions that continue to perpetuate injustices worldwide.



Student experience and learning

At Birmingham, our research enhances and reinforces our learning experience. We value teaching excellence and have developed a digital-first approach, using innovative technology to enrich in-person teaching. Our inclusive and intellectually challenging education programmes are underpinned by cutting-edge knowledge and taught by leading researchers to encourage independent thinking and develop the next generation of leaders, innovators and problem-solvers.

We are proud of our outstanding graduate employability. For the second year running, we have been ranked the UK's number one most targeted institution by leading graduate employers (High Fliers Graduate Market, 2025). Our students continue to flourish on leaving the University, joining employers such as the NHS, KPMG, Network Rail, Jaguar Land Rover, Arup, Deloitte, and BT.

A distinctive element of student experience is learning within our green campus, which is one of the largest open green spaces of any UK University. Our 672-acre Edgbaston campus includes The Vale student accommodation village, set around a lake in its own beautiful parkland. In recent years, we have made major investments in a new main library, the Collaborative Teaching Laboratory, a Teaching and Learning Building, and sports centre.



Opened in 2021, our Dubai campus is a permanent academic home for up to 2,900 students, a community for Birmingham alumni in the region and a hub for community outreach and engagement activities.

Our online learning offering also provides students the flexibility to study alongside their current professional and personal commitments. UOB Online offers programmes that have been purpose-built from the ground up to harness the full power of the technologies available, involving everything from cloud-powered collaboration to interactive live lectures.

We now welcome a total student population of over 25,000 undergraduate, 13,000 postgraduate and 2,500 distance learning students. Home to a diverse global community, we have nearly 11,000 international students studying either at Edgbaston, on our distance learning courses or overseas at our Dubai campus or through our partnership with Jinan University.



University of Birmingham Dubai

Our global outlook

Our international strategy is focused around attracting the very best global talent to study and work at Birmingham. We also seek to extend our reach and influence, producing the very best impactful research through our global collaboration, contributing to the priority regions where we engage, with regional institutes creating a powerful focus for our engagement.

In North America, our signature partnership with the University of Illinois Urbana-Champaign has grown to over 70 successful faculty-to-faculty links in key academic disciplines thanks to a successful framework for continued collaboration and investment. Our more recent partnership with McMaster University is supporting research in healthy ageing and climate action.

Europe represents a major strand of our global engagement, with an exceptionally strong performance in Horizon Europe grants that we will build post UK association. Signature partnerships include those with Leiden University in the Netherlands and with the Fraunhofer Institute and the Federal Institute for Materials Research and Testing in Germany. More recently, we have launched a #TwinforHope partnership with Ivan Franko National University, Lviv.



Our China Institute supports sister-city links with both Guangzhou and Nanjing with developed research platforms in healthcare, advanced manufacturing, through to new energy initiatives and healthcare technology innovation. Our India Institute supports a range of partnerships in India, notably establishing joint postgraduate programmes between IIT Madras and Birmingham, which is the first such education partnership at Masters' level between any IIT and a UK Russell Group University.



Our China Institute supports sister-city links with both Guangzhou and Nanjing

Through purposeful investment in Brazil for over 10 years, we have established research partners in health, nanotechnology, environmental science, transport and energy, leading us to inaugurate a new Brazil Institute in 2023.

Our campus in Dubai has enabled us to establish extensive partnerships in the region, including a long-term agreement with the Roads and Transport Authority (RTA) of Dubai that sees the RTA leasing space at our campus for its Innovation, Research and Development Centre, supporting the next generation of UAE transport engineers.



Our work in Brazil led to the inauguration of the Brazil Institute in 2023



The India Institute works research areas such as air pollution

Our commitment to civic engagement

As the UK's original civic university, we believe in sharing knowledge and making education accessible to all. In our 125th year, we reaffirmed this commitment through the Birmingham Civic Agreement, pledging to expand our contribution to education, innovation, community and growth across the city and region.

Located at the heart of Birmingham city centre, The Exchange uses our research, teaching and local, national and international networks to create a place of curiosity, celebration, collaboration and change. Home to a policy institute and a business incubator for students and graduates, The Exchange provides a base for teaching in leadership, executive education and in-demand skills.

Set to become a world-leading hub for healthcare technologies, the first building on the Birmingham Health Innovation Campus was completed in autumn 2024. Led by Birmingham Health Partners and located alongside both the University and the Queen Elizabeth Hospital, the Campus will bring together leading-edge academic research with high-quality laboratory, office, incubation, and innovation facilities for forward-thinking businesses. It will form part of an integrated, physically connected cluster of patient-centred health excellence.



The Exchange, Birmingham

The University of Birmingham School is a centre of teacher education in the region. Already one of the most diverse schools in the city, we are proud of the 'Good' rating it secured in its first Ofsted inspection – the best possible rating at this stage in its development.

Our sector-leading widening participation programmes engage with more than 10,000 students across the West Midlands each year. By supporting young people from less advantaged backgrounds and non-selective state schools, these initiatives significantly increase their chances of progressing to a Russell Group university.

Our fundraising and volunteering campaign 'Birmingham In Action' aims to transform lives for our generation and the next by tackling the world's biggest challenges, today. It's one of the largest fundraising campaigns in the modern history of UK higher education and supports some of the most important areas of work in the University, including access to education, youth mental health, cancer, refugees and the environment.



Enjoy living in the UK's most diverse city

Birmingham has experienced a major transformation over the last decade. Home to a vibrant and multicultural community, our city is an exciting place to live, work and visit.

Combining a rich cultural heritage with a contemporary vision, Birmingham has something to offer everyone. The city is home to the internationally renowned Birmingham Royal Ballet and Symphony Hall, one of the world's greatest concert venues, and the iconic Bullring, one of Europe's largest dedicated shopping facilities.

The Birmingham 2022 Commonwealth Games was the largest multi-sport event to be held in England in 10 years, and was supported by the most comprehensive University partnerships in the history of the Games. Birmingham also offers international test cricket, Premier League and Championship football, top-class rugby and international championship golf and tennis.



As a diverse, multicultural city, Birmingham is renowned for the breadth of its cuisine and has more Michelin starred restaurants than any other English city outside London. The city is also home to quality schools and a choice of housing, from city centre flats to detached houses in the suburbs.

A recent 'Best Places to live in Britain' report by Sunday Times/Zoopla, put three areas of Birmingham in the top 50 best places to live in Britain, with the suburb of Moseley voted the overall winner.

Further afield, Birmingham is within an hour's drive of Stratford-upon-Avon and London Euston can be reached in as little as 79 minutes, with trains running every 20 minutes. We have our own University train station that connects to Birmingham New Street Station that is used by 50 million passengers every year. Through Birmingham Airport you can also access the world with more than 50 airlines operating scheduled services to 100 destinations across the globe.



More information and how to apply

The University is committed to building a fully inclusive and diverse community, including in its senior leadership. We welcome and encourage applications from candidates with the qualifications and experience to undertake this role, particularly women, and people from minoritised ethnic groups.

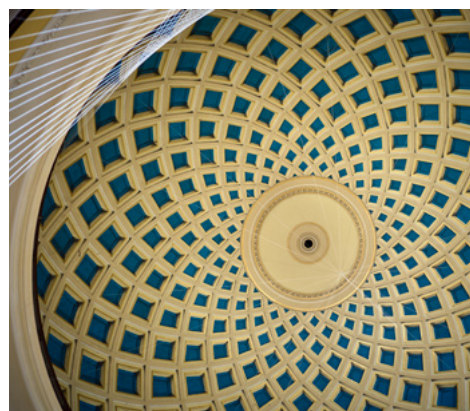
To apply, please submit your application through our [jobs website](#). Candidates will be asked to provide a covering letter, full CV detailing academic and professional qualifications, employment history, latest remuneration and relevant achievements.

Recruitment of outstanding scholars as Anniversary Chairs and Fellows is an ongoing campaign. The application deadline for this phase of recruitment is Sunday 11th January 2026. The timescales for future phases of recruitment will be advised in due course.

Panel and presentation interviews will take place at University of Birmingham. Flexible arrangements will be considered for international applicants and the full application process will be provided directly upon shortlisting.



The Lapworth Museum of Geology, University of Birmingham



Domed ceiling of the Aston Webb building

125th Anniversary

Chair role profile

Job Summary

The Anniversary Chair is a senior academic appointment for individuals of exceptional academic standing, held in high esteem by their peers internationally, who will make a significant personal contribution to the successful delivery of the research pillar of the Birmingham 2030 Strategic Framework.

Successful candidates will be established leaders in their field, evidenced, as appropriate to their career stage, by an outstanding record of publications, grant capture and research leadership.

Main Duties

With exemplary research, you will have an outstanding international reputation, based on a strong track record of innovative research and influence in your discipline which will enable you to:

Research

- Lead an established research group and help us achieve our ambitious research vision by inspiring people, managing resources, and driving excellent research.
- Publish distinctive, high-quality outputs that are world-leading in terms of innovation, originality, significance, and rigour.
- Shape research strategies, policies and procedures in your area or University.
- Maximise research income in your field by supporting colleagues with funding and promoting collaborations with external researchers and organisations in the UK and overseas.
- Sustain research income at a level in excess of the norms in your field in other Russell Group universities.
- Promote your research in the UK and globally through conference papers, delivering keynote speeches, lectures, and plenary sessions.
- Provide excellent supervision to research students.
- Share your research impact with your peers and the world through publications, consultancy, advisory work and engaging with policy and practice.
- Generate high value impact knowledge transfer and enterprise that is of manifest benefit to the University.
- Peer review articles for peer reviewed academic journals and grant applications by research councils and/or other major funding bodies.

Education

- Develop, plan and lead the delivery of high-quality teaching programmes that are engaging, innovative and accessible to all.
- Actively contribute to curriculum design and make sure our research-intensive teaching, learning and assessment activities are always contemporary, inclusive and academically challenging.
- Ensure the delivery of outstanding teaching by developing collaborative working arrangements with colleagues across our University.

Citizenship

- Identify wellbeing issues within your area or the University and develop appropriate solutions sensitively.
- Take collective ownership of challenges and work with colleagues to develop solutions.
- Recognise and support opportunities for inclusive practice.
- Mentor and coach colleagues, particularly those in the early stages of their career.

Leadership

- Play a leading role in managing and shaping the future of your area. This can involve anything from developing policies and practices to driving forward partnerships and collaborations.
- Inspire and influence people to make sure everyone is engaged with our strategy and ambition.
- Proactively support and champion equality, diversity and inclusion.
- Lead a range of activities that help to create a positive community spirit and inclusive and welcoming environment for all.

Skills and Experience

- A PhD or equivalent qualification or body of work.
- An outstanding track record of internationally excellent publications and research output.
- Evidence of attracting significant funding, and planning and delivering exemplary research.
- Demonstrable experience of inspirational leadership and successful research and teaching collaborations.
- Role model academic citizenship, giving your time generously and getting actively involved with university life.
- Demonstrable evidence of internationally recognised and world leading research excellence through highly cited publications.
- Proven ability to plan and lead the delivery of impactful research programmes.
- Evidence of successful collaborations with other teams/institutions and significant success in obtaining external grants.
- Experience of attracting and supervising high quality doctoral students and early career researchers.
- Track record in interdisciplinary working in research and bringing multi-disciplinary teams together to deliver high levels of research productivity.
- Track record of leading innovative curriculum design and implementation.



birmingham.ac.uk/125-fellows-and-chairs

Designed and printed by



**UNIVERSITY OF
BIRMINGHAM**

Creative
Media

Edgbaston, Birmingham,
B15 2TT, United Kingdom
birmingham.ac.uk

01549