

# Orientation – January 2020

Claire Belkadi  
Head of Study Abroad



IT'S YOUR TIME NOW

# Welcome and Congratulations

- Introductions

## Study Abroad Team (incoming):

- Maggie Wootton – Study Abroad Operations Manager
- Neil Driscoll – Incoming International Coordinator
- Cori Leung – Incoming Erasmus Coordinator



Teaching  
Excellence  
Framework

**RUSSELL  
GROUP**



IT'S YOUR TIME NOW

UNIVERSITY OF  
BIRMINGHAM

# Speakers

- **14:30 – 14:45** Welcome and Introduction to the University, Claire Belkadi
- **14:45 – 15:00** Academic matters & module allocation, Maggie Wootton
- **15:00 – 15:20** Student Services, Drew Linforth
- **15:20 – 15:40** Birmingham International Academy, Ian Martin
- **15:40 – 16:00** UB Sport – Lauren Connell
- **16:00 – 16:15** The Guild of Students
- **16:15 – 16:30** Birmingham information, Neil Driscoll





IT'S YOUR TIME NOW

UNIVERSITY OF  
BIRMINGHAM



IT'S YOUR TIME NOW

UNIVERSITY OF  
BIRMINGHAM



IT'S YOUR TIME NOW

UNIVERSITY OF  
BIRMINGHAM



IT'S YOUR TIME NOW

UNIVERSITY OF  
BIRMINGHAM

# Colleges & Schools

## ☐ UoB has 5 Colleges:

- ☐ CAL – College of Arts and Law
- ☐ COSS – College of Social Sciences
- ☐ EPS – College of Engineering and Physical Sciences
- ☐ LES – College of Life and Environmental Sciences
- ☐ MDS – College of Medical and Dental Sciences (not open to exchange students)
- ☐ + LANS – Liberal Arts and Natural Sciences (independent School)

## ☐ Colleges are responsible for registering you on modules



# College of Arts and Law

## □ Schools within CAL

- Birmingham Law School
- English, Drama and American & Canadian Studies
- History and Cultures
- Language, Cultures, Art History and Music
- Philosophy, Theology and Religion



# College of Social Sciences

## ☐ **Schools within CoSS**

- ☐ Birmingham Business School
- ☐ Education
- ☐ Government and Society
- ☐ Social Policy



IT'S YOUR TIME NOW

UNIVERSITY OF  
BIRMINGHAM

# College of Life & Environmental Sciences

## ☐ Schools within LES

- ☐ Biosciences
- ☐ Geography, Earth and Environmental Sciences
- ☐ Psychology
- ☐ Sport, Exercise and Rehabilitation Sciences



# College of Engineering & Physical Sciences

- **Schools within EPS**
  - Chemical Engineering
  - Chemistry
  - Computer Science
  - Engineering
  - Mathematics
  - Metallurgy and Materials
  - Physics and Astronomy



IT'S YOUR TIME NOW

UNIVERSITY OF  
BIRMINGHAM

# Independent School

- Liberal Arts and Natural Sciences (LANS)
- Students can choose modules across four colleges
- One compulsory module of 10 UK credits:  
LI Interdisciplinarity II (Module code: 31539)



# Content

- ☐ Registration
- ☐ Accommodation
- ☐ Finance / IT
- ☐ Academic matters & module allocation
- ☐ Birmingham International Academy
- ☐ Student services
- ☐ Life at the University (Guild / Sports)
- ☐ Information about Birmingham



IT'S YOUR TIME NOW

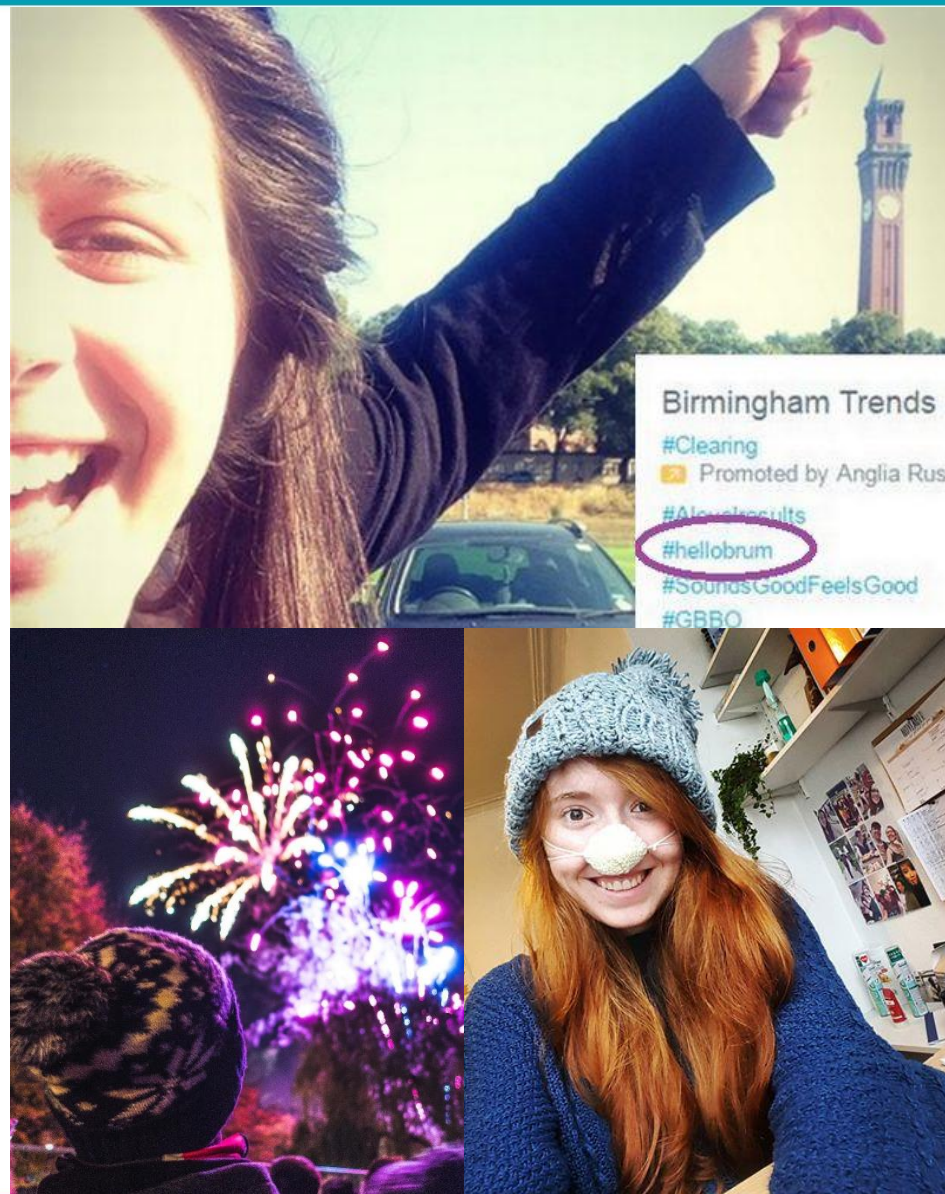
UNIVERSITY OF  
BIRMINGHAM

# Birmingham Social

- #Myglobalstory
- #HelloBrum



@myglobalstory



IT'S YOUR TIME NOW

UNIVERSITY OF  
BIRMINGHAM

# Becoming a UoB student

## ☐ University Identity Card

## ☐ Accommodation

- [www.birmingham.ac.uk/accommodation](http://www.birmingham.ac.uk/accommodation)
- [www.guildlettingsbirmingham.co.uk](http://www.guildlettingsbirmingham.co.uk)

## ☐ Finance

- [www.international.studentcalculator.org.uk/international/](http://www.international.studentcalculator.org.uk/international/)
- <https://study-uk.britishcouncil.org/moving-uk/money-budgeting>
- The international student calculator will help you work out how to manage your money and build a budget for living and studying in the UK



IT'S YOUR TIME NOW

UNIVERSITY OF  
BIRMINGHAM

# IT Services

- ☐ IT Help Desk in the Main Library
- ☐ Free Access
- ☐ IT account
- ☐ 1200 computers on Campus
- ☐ Free software download
- ☐ University portal (my.bham)

➤ **Login enquiries to:** [www.itservicedesk.bham.ac.uk](http://www.itservicedesk.bham.ac.uk)



IT'S YOUR TIME NOW

UNIVERSITY OF  
BIRMINGHAM

# New students' webpages

- For more details, visit our new students' webpages, which will give you lots of information to help you get ahead of the game and prepare for your studies ([www.birmingham.ac.uk/newstudents](http://www.birmingham.ac.uk/newstudents))



IT'S YOUR TIME NOW

UNIVERSITY OF  
BIRMINGHAM

# Academic matters & module allocation



Standards and core principles of UoB learning community:

[UoB Code of Practice  
on academic integrity](#)

[Student Charter](#)

[Guidance on Plagiarism](#)



IT'S YOUR TIME NOW

UNIVERSITY OF  
BIRMINGHAM

# University regulations

- ❑ You must be aware of the University's Regulations (Codes of Practice, Policies and Guidance) relating to conduct, integrity, attendance and reasonable diligence.
- ❑ The University can support you if non-academic matters are affecting your academic progress, e.g. as set out in the Codes of Practice, Policies and Guidance on Extenuating Circumstances, Leave of Absence, Reasonable Adjustments, Appeals or Health, Wellbeing & Fitness to Study.



# Curriculum Matters

- Range of teaching methods including:
  - Lectures, Seminars and Tutorials
- Personal Tutor / Exchange Tutor
- Wellbeing Tutor
- Birmingham International Academy (BIA)
  - [www.birmingham.ac.uk/bia](http://www.birmingham.ac.uk/bia)
- University study skills:
  - [www.skills4uni.bham.ac.uk](http://www.skills4uni.bham.ac.uk)



# Module Registration

- ☐ If you are here for **one year**, you must take 60 UK credits per semester (**120 UK credits** in total).
- ☐ If you are here for **one semester**, you must take **60 UK credits** in total.
- ☐ Minimum of 40 credits per semester in your Preferred College.
- ☐ Exchange tutors can help you decide what modules to choose.



# What modules?

- Log-in to MyBham (click on “*my programme*” tab):  
<https://www.my.bham.ac.uk/cp/home/displaylogin>



UNIVERSITY OF  
BIRMINGHAM

**[my.bham]**

- **Do not worry if no modules show on your MyBham today – some academics prefer to have a conversation with you first**
- Please attend college sessions for module enquiries – see Welcome Week Plan



IT'S YOUR TIME NOW

UNIVERSITY OF  
BIRMINGHAM

# College sessions

College of Arts and Law	College of Social Sciences	College of Engineering and Physical Sciences	College of Life and Environmental Sciences	Liberal Arts and Natural Sciences
<p><b>Module drop-in sessions for all students:</b>  <b>Wednesday, 8th January</b>  <b>10:00-14:00</b>, Arts Building, Mason Lounge.</p> <p><b>Thursday, 9th January</b>  <b>10:00-14:00</b>, Arts building, Mason Lounge.</p> <p><b>Note:</b> these sessions are for students who are under-registered ONLY. Any other queries such as timetable clashes or learning agreements are to be sent directly to calincomingexchange@modu les@contacts.bham.ac.uk and will not be dealt with in these sessions.</p> <p><b>Students from other Colleges looking to pick up optional modules are also welcome.</b></p>	<p><b>Business School</b>  Induction session  <b>Tuesday, 7th January, 11am – 1pm</b>  University House G12</p> <p>Drop in session to discuss module choices  <b>Tuesday, 7th January 1pm to 3pm</b>  University House 101</p> <p>Business School contact:  <a href="mailto:bbs.incomingexchange@contacts.bham.ac.uk">bbs.incomingexchange@contacts.bham.ac.uk</a></p> <p><b>School of Government (POLSIS)</b>  <b>Wed, 8th Jan at 1 pm</b>, (Muirhead Tower, Room 427) Welcome Meeting - Module Registration – Michelle Dennant  <a href="mailto:M.J.French@bham.ac.uk">M.J.French@bham.ac.uk</a></p> <p><b>School of Education</b>  <b>Wednesday, 8th January 1 pm</b> (the main Reception desk in the School of</p>	<p><b>Chemical Engineering</b>  Tuesday 14<sup>th</sup> Jan, 2-3pm, Room G03 in Chemical Engineering  Session with Dr Yongliang Li  <a href="mailto:y.li.1@bham.ac.uk">y.li.1@bham.ac.uk</a></p> <p><b>Chemistry</b>  <b>Thursday 9th January, 2-4pm</b>  Drop-in session for module selection and familiarisation with the department  <b>Location:</b> Haworth Building 211c.  Session with Dr John Wilkie  <a href="mailto:J.WILKIE@bham.ac.uk">J.WILKIE@bham.ac.uk</a></p> <p><b>Computer Science</b>  <b>Thursday, 9th January</b>, 15:00 - 17:00  Room 245, Computer Science Building, (Y9 on the campus map)  Robert Hendley  <a href="mailto:R.J.HENDLEY@bham.ac.uk">R.J.HENDLEY@bham.ac.uk</a></p> <p><b>Engineering</b>  <b>Friday, 10th January</b>, 14:00 in Room MECH-B04; module allocation with Marco Castellani;  <a href="mailto:M.Castellani@bham.ac.uk">M.Castellani@bham.ac.uk</a>; <b>Location:</b> Mechanical and Civil Engineering Building (Map Ref: Y3)</p>	<p><b>Environmental Sciences</b>  <b>Wednesday 8th January</b>  09:30 – 10:30  Geography Building - Room: 125  Exchange Tutor: Irina Kuznetsova  <a href="mailto:i.kuznetsova@bham.ac.uk">i.kuznetsova@bham.ac.uk</a></p> <p><b>Psychology</b>  <b>Tuesday, 7th January 11am</b> in Old Gym (Y1 on the campus map) – room LG 06.  Session with Carmel Mevorach,  <a href="mailto:c.mevorach@bham.ac.uk">c.mevorach@bham.ac.uk</a></p> <p><b>Sport, Exercise and Rehabilitation Sciences</b>  <b>Friday, 10th January</b>, 10-11:30 am; Location: SportExR G15  Sessions with Matt Bridge  <a href="mailto:M.Bridge@bham.ac.uk">M.Bridge@bham.ac.uk</a>.</p> <p><b>Biosciences</b>  <b>Friday, 10th January, 14:00-15:00;</b>  <b>Location:</b> Old Gym – LG10  Session with Dr Alicia Hidalgo  <a href="mailto:a.hidalgo@bham.ac.uk">a.hidalgo@bham.ac.uk</a>;</p>	<p><b>You are allowed and encouraged to attend module sessions run by the other colleges in this chart.</b></p> <p><b>Contact person:</b> Graham Davies, Programme Manager,  <a href="mailto:lans@contacts.bham.ac.uk">lans@contacts.bham.ac.uk</a></p> <p><b>Monday, 6th January</b> (10:00 - 14:00): <b>Drop Into the LANS Hub</b>: Academic and admin staff will be available all day to help with any queries incl. timetable issues and module choices.</p> <p><b>Tuesday, 7th January</b> (10:00 - 16:00): <b>Drop Into the LANS Hub</b>: Academic and admin staff will be available all day to help with any queries incl. timetable issues and module choices.</p> <p><b>Wednesday, 8th January</b> (10:00 - 15:00): <b>Drop Into the LANS Hub</b>: Academic</p>

IT'S YOUR TIME NOW

UNIVERSITY OF  
BIRMINGHAM

College of Arts and Law	College of Social Sciences	College of Engineering and Physical Sciences	College of Life and Environmental Sciences	Liberal Arts and Natural Sciences
<p><b>CAL Induction and Welcome</b>  <b>Thursday, 9th January, 14:00–15:00</b> in the Arts building, lecture room 5. There will also be an optional City centre tour at the end of this event, 15:00-16:00.  Contact person – Helen Murray  <a href="mailto:H.Murray@bham.ac.uk">H.Murray@bham.ac.uk</a></p>	<p>Education) - Module allocation session; school contact person: Prithvi Perepa  <a href="mailto:p.perepa@bham.ac.uk">p.perepa@bham.ac.uk</a></p> <p><b>School of Social Policy</b>  School Induction on <b>Wed, 15th January at 1pm</b> (Muirhead Tower, Room 118)</p> <p>Module allocation on <b>Mon, 13th January – Friday 17th January (13:00 – 16:00)</b>, Muirhead Tower Room 829; Contact person - Jenny Atkins  <a href="mailto:J.E.Atkins@bham.ac.uk">J.E.Atkins@bham.ac.uk</a></p>	<p><b>Metallurgy and Materials</b>  <b>Thursday 9th January, 1.00pm–4.00pm</b>  <b>Location:</b> School of Metallurgy and Materials Room 2C29.  Session with Richard Sheridan  <a href="mailto:R.S.Sheridan.1@bham.ac.uk">R.S.Sheridan. 1@bham.ac.uk</a></p> <p><b>Mathematics</b>  <b>Thursday, 9th January, 2:00 pm</b>  Location: Room 310 of the Watson Building (3rd floor); students can email Nikolaos Fountoulakis  <a href="mailto:N.Fountoulakis@bham.ac.uk">N.Fountoulakis@bham.ac.uk</a> to discuss module choices and any additional queries.</p> <p><b>Physics and Astronomy</b>  <b>Tuesday, 14th January;</b> Meetings with Exchange Students (Building - Physics East G27):  <a href="#">Elodie Higgins</a> 8:30 am  <a href="#">Adrián Castillo Santillán</a> 9:00 am  <a href="#">Yiu Wing Cheung</a> 9:30 am  <a href="#">Crystal Wang</a> 10:00 am  <b>Also, Drop in session between 10 am and 12 pm</b> (<a href="#">Tianrui Jiang</a>, <a href="#">Haoran Li</a> and <a href="#">Jiangtian Mao</a>)  School contact - Chris Mayhew  <a href="mailto:C.MAYHEW@bham.ac.uk">C.MAYHEW@bham.ac.uk</a></p>		<p>and admin staff will be available all day to help with any queries incl. timetable issues and module choices.</p> <p><b>Thursday, 9th January</b> (11:30 – 1:30pm): <b>Introduction and Lunch</b> to the Liberal Arts and Natural Sciences by Year Abroad Tutor and Programme Manager: Room G18, European Research Institute Building <b>followed by Lunch</b> at Noble Room, Staff House.</p> <p><b>Friday, 10th January</b> (10:00 - 16:00): <b>Drop Into the LANS Hub:</b> Academic and admin staff will be available all day to help with any queries incl. timetable issues and module choices.</p>

IT'S YOUR TIME NOW

UNIVERSITY OF  
BIRMINGHAM

# Birmingham Information

Neil Driscoll  
Incoming International  
Coordinator



IT'S YOUR TIME NOW

- ❑ Communication - with the local people 'Brummies'.
- ❑ Shopping - for food and drinks (Aldi and Sainsburys Supermarkets) and for kitchen items and bed sheets. Also shops in Selly Oak.
- ❑ Food – Fish & Chips, Balti (Curry), Full English Breakfast and Traditional Sunday Lunch - Roast Beef and Yorkshire Pudding
- ❑ Getting online – WiFi at UoB and Giff Gaff Mobile Phone Sim Cards.



- Travel - Getting around the City and the UK:
  - Buses (get a student bus pass) - [nxbus.co.uk](http://nxbus.co.uk)
  - Trains (get a 16-25 Young Persons railcard)
  - Megabus (cheap bus service around the UK and into Europe) - [uk.megabus.com](http://uk.megabus.com)
  - Bicycle – visit Urban Cycles by Staff House/University centre.
  
- Places to visit in Birmingham and events to attend
  - Back to Back houses, Bournville Village (Cadburys) and Black Country Living Museum.
  - Visit [whatsonlive.co.uk/birmingham](http://whatsonlive.co.uk/birmingham) and [livebrum.co.uk](http://livebrum.co.uk) (good for live music gigs).
  
- Making friends – attend our Icebreaker Event, join the UoB student exchange society (UOBEX), join sports teams and societies.



# Back to Back Houses



## Bournville Village



## Black Country Living Museum



IT'S YOUR TIME NOW

UNIVERSITY OF  
BIRMINGHAM

Thank you and we  
hope you have a  
wonderful time in  
Birmingham.



IT'S YOUR TIME NOW

UNIVERSITY OF  
BIRMINGHAM

# Icebreaker Event



- ☐ **Icebreaker** supported by the Guild of Students, Global Buddies and University of Birmingham Exchange Society
- ☐ Wednesday, 8<sup>th</sup> January
- ☐ 15:00 – 17:00
- ☐ **Where: Underground Bar, the Guild**



# More Events!



- ☐ Wednesday, 15<sup>th</sup> January
- ☐ **14:00 – 17:00 New Student Information Fair**
- ☐ **17:00 – 18:30 University Welcome Address**
- ☐ Where: Teaching & Learning Building (next to Main Library)

**Reserve your place now:**

<https://www.eventbrite.co.uk/e/university-welcome-address-tickets-85767373523>



IT'S YOUR TIME NOW

UNIVERSITY OF  
BIRMINGHAM

# Any Questions?

## Study Abroad and Exchange Reception

Until Friday, 17<sup>th</sup> January - [Room 131 Aston Webb](#)

- ☐ 10:00 – 12:00 (every day)
- ☐ 14:00 – 16:00 (every day)

From Monday, 20<sup>th</sup> January - [Room 131 Aston Webb](#)

- ☐ 10:00 – 12:00 (Tuesday and Thursday (*term-time only*))
- ☐ 14:00 – 16:00 (Tuesday and Thursday (*term-time only*))

