



UNIVERSITY OF
BIRMINGHAM

PATHWAYS TO BIRMINGHAM



ROUTES TO THE
PROFESSIONS

INSPIRED@
BIRMINGHAM

ACADEMIC
ENRICHMENT
PROGRAMME

NATIONAL
ACCESS
SUMMER
SCHOOL

ACCESS TO
BIRMINGHAM

Choose your pathway at www.birmingham.ac.uk/p2b

Introducing Pathways to Birmingham... an insightful and exciting suite of programmes to support Year 12 and Year 13 students in their progression to university and beyond.

Each Pathways to Birmingham programme has a distinctive offering, but they all provide students with an insight into university study and graduate employability, support with the university application process and enable successful transition to higher education.

Upon successfully completing a Pathways to Birmingham programme, students will be eligible for an alternative offer (up to two grades below the standard offer) and enhanced funding opportunities to support students through their studies at the University of Birmingham.

Choose your pathway at
www.birmingham.ac.uk/p2b



ROUTES TO THE PROFESSIONS

What is Routes to the Professions?

The Routes to the Professions programme offers a unique opportunity for Year 12 students to gain a real insight into university study. It focuses on specific vocational courses and provides students with tailored support throughout the university application process.

How will Routes to the Professions help you?

Students join the programme in Year 12 and receive a range of support through to Year 13.

The support includes:

- Interview preparation
- Work placements
- Mentoring from current students
- The opportunity to shadow a student for a day

Who should apply?

Students who are looking for a career in:

- Accounting and Finance
- Engineering
- Law
- Dentistry
- Medicine

Students applying to Routes to the Professions must be predicted to meet the academic criteria for each route.

For more information, visit
www.birmingham.ac.uk/routes or
contact us on r2p@contacts.bham.ac.uk

Applications for Routes to the Professions are accepted from early October to late November.

“WITHOUT ROUTES TO THE PROFESSIONS I WOULDN'T HAVE GOT INTO UNIVERSITY. THE SUPPORT FROM MY MENTORS AND THE EVENTS THE PROGRAMME PROVIDED PREPARED ME FOR EVERYTHING FROM INTERVIEWS TO PERSONAL STATEMENTS.”

YEAR 12

INSPIRED@ BIRMINGHAM

What is Inspired@Birmingham?

Inspired@Birmingham supports students with the decision-making process during Year 12 – whether this is choosing a university course or looking at long-term career pathways.

How will Inspired@Birmingham help you?

The programme will inspire and motivate students as they learn from supportive student mentors, successful graduates and outstanding academics. Throughout their Inspired@Birmingham journey, students will receive support through:

- Subject insight sessions
- Talks from recent graduates about their career journey
- Academic skills sessions
- Careers sessions
- Personal statement and application workshops

Who should apply?

Students either looking to study non-vocational courses at university or who are still unsure which courses to apply for.

For more information, visit
www.birmingham.ac.uk/inspired
or contact us on
inspired@contacts.bham.ac.uk

Applications for Inspired@Birmingham are accepted from early October to late November.

“EVERY SINGLE PERSON I MET WAS FRIENDLY AND KIND. THEY ALL HELPED ME THROUGHOUT AND NEVER ONCE DID I FEEL LEFT OUT.”

YEAR 12



ACADEMIC ENRICHMENT PROGRAMME

What is the Academic Enrichment Programme?

The Academic Enrichment Programme is an immersive five day residential that gives students an insight into the full university experience, including taster lectures from a range of academic subjects, living in accommodation and new social experiences.

How will the Academic Enrichment Programme help you?

Students will benefit from:

- First-hand experience of academic learning at a research-led institution
- Experience of living in university accommodation and socialising with like-minded students
- Support from current undergraduates via e-mentoring
- Support with their decision making process
- An invitation to attend a celebration event that recognises the hard work of all the participants on the programme

Who should apply?

Students who want first-hand experience of studying and living at university and **live within the Greater West Midlands**. Students must be available to attend the residential in the August after Year 12.

For more information, visit
www.birmingham.ac.uk/aep or
contact us on aep@contacts.bham.ac.uk

Register your interest from early October.
Applications are accepted from January.

“THE BEST PART OF MY WHOLE SUMMER!”

YEAR 12



NATIONAL ACCESS SUMMER SCHOOL*

**This programme is only for students who live outside the Greater West Midlands*

What is the National Access Summer School?

The National Access Summer School is a four day residential, designed to introduce Year 12 students, from across England, to university life and higher education.

How will the National Access Summer School help you?

Students who attend the National Access Summer School will benefit from:

- Taster lectures from a range of academic disciplines
- First-hand experience of living in university accommodation and socialising with like-minded students
- Advice and guidance regarding their higher education decision making
- Support with their university applications
- Support from current undergraduates via e-mentoring in Year 13

Who should apply?

Students who want first-hand experience of studying and living at university and **live outside the Greater West Midlands**.

Students must be available to attend the residential in the August after Year 12.

For more information, visit www.birmingham.ac.uk/nass or contact us on nass@contacts.bham.ac.uk

Register your interest from early October. Applications are accepted from January.

‘THE SUMMER SCHOOL WAS A GREAT EXPERIENCE AND AN OPPORTUNITY TO ASK QUESTIONS, INTERACT AND TRULY SEE WHAT STUDYING AT THE UNIVERSITY OF BIRMINGHAM IS LIKE.’

YEAR 12

ACCESS TO BIRMINGHAM

‘WITHOUT THE ENCOURAGEMENT OF THE A2B PROGRAMME, I WOULD NEVER HAVE APPLIED TO BIRMINGHAM.’

What is Access to Birmingham (A2B)?

The A2B programme supports University of Birmingham applicants who have had little or no experience of higher education, and helps them discover what studying at university involves.

How will Access to Birmingham help you?

During Year 13, A2B students will benefit from:

- An online study support module to help with the transition to higher education
- The chance to complete an academic assignment related to the programme applied for where students will develop skills needed in higher education
- Practice interviews for particular courses where relevant
- The opportunity to learn more about university life by interacting with staff, students and other programme participants

Who should apply?

Students in Year 13 or mature students who have applied, via UCAS, for a place at the University of Birmingham. Applications are completed online at www.birmingham.ac.uk/a2b

For more information, visit www.birmingham.ac.uk/a2b or contact us on a2b@contacts.bham.ac.uk

Applications are accepted from mid-September to late February. Medicine and Dentistry applicants must apply by mid-November.

YEAR 13



IT'S UP TO YOU!

Our five Pathways to Birmingham programmes are all unique in their individual offerings. We encourage students to use the chart to help them pick the most suitable programme for them.

PATHWAYS TO BIRMINGHAM

	Routes to the Professions	Inspired@ Birmingham	Academic Enrichment Programme	National Access Summer School	Access to Birmingham (A2B)
Year 12	■	■	■	■	
Year 13 and mature students					■
Vocational subjects	■		■	■	■
Non-vocational subjects		■	■	■	■
Summer school			■	■	
Activities throughout the year	■	■			■
Subject tasters	■	■	■	■	
Careers sessions	■	■			
Industry insight events	■				
Guaranteed interviews	■	■	■	■	
Mentoring	■	■	■	■	
Interview preparation sessions	■	■	■	■	■
Skills4Uni	■	■	■	■	■
Reflective assignment	■	■	■	■	
Academic assignment					■
Alternative offer upon completion	■	■	■	■	■
Eligible for additional funding	■	■	■	■	■

For more information, visit www.birmingham.ac.uk/p2b

BENEFITS OF PATHWAYS TO BIRMINGHAM

FINANCIAL AWARDS

Successful engagement and completion of a Pathways to Birmingham programme could result in your eligibility for a range of financial support, including the Pathways to Birmingham Scholarship funded by philanthropic donations, and the Chamberlain Award.

Chamberlain Award worth £2,000 a year

If you successfully complete a Pathways to Birmingham programme and have a household income below £60,000, you may be eligible for the Chamberlain Award of £2,000 for each successful year of study at the University. Find out more at www.birmingham.ac.uk/chamberlain

Pathways to Birmingham Scholarship worth £1,500 a year

Depending on your exam results and your performance in the Skills4Uni quiz, you could be eligible for a Pathways to Birmingham Scholarship worth £1,500 for each successful year of study at the University. Find out more at www.birmingham.ac.uk/p2b

Therefore, if you complete one of the Pathways to Birmingham successfully, you could be eligible to receive up to £3,500 per year of study at the University of Birmingham.

Financial awards are subject to change. Please check the website for the latest information.

ALTERNATIVE OFFER

The alternative offer is typically two grades below the standard offer published in the University prospectus. For instance, if the standard offer for your course is AAA, the alternative offer you will receive as a Pathways to Birmingham student will be ABB. Offers are subject to change, please check the prospectus or our course pages for full and up-to-date entry requirements.

To be eligible for an alternative offer, you must successfully complete a Pathways to Birmingham programme and make the University of Birmingham your firm choice on UCAS.

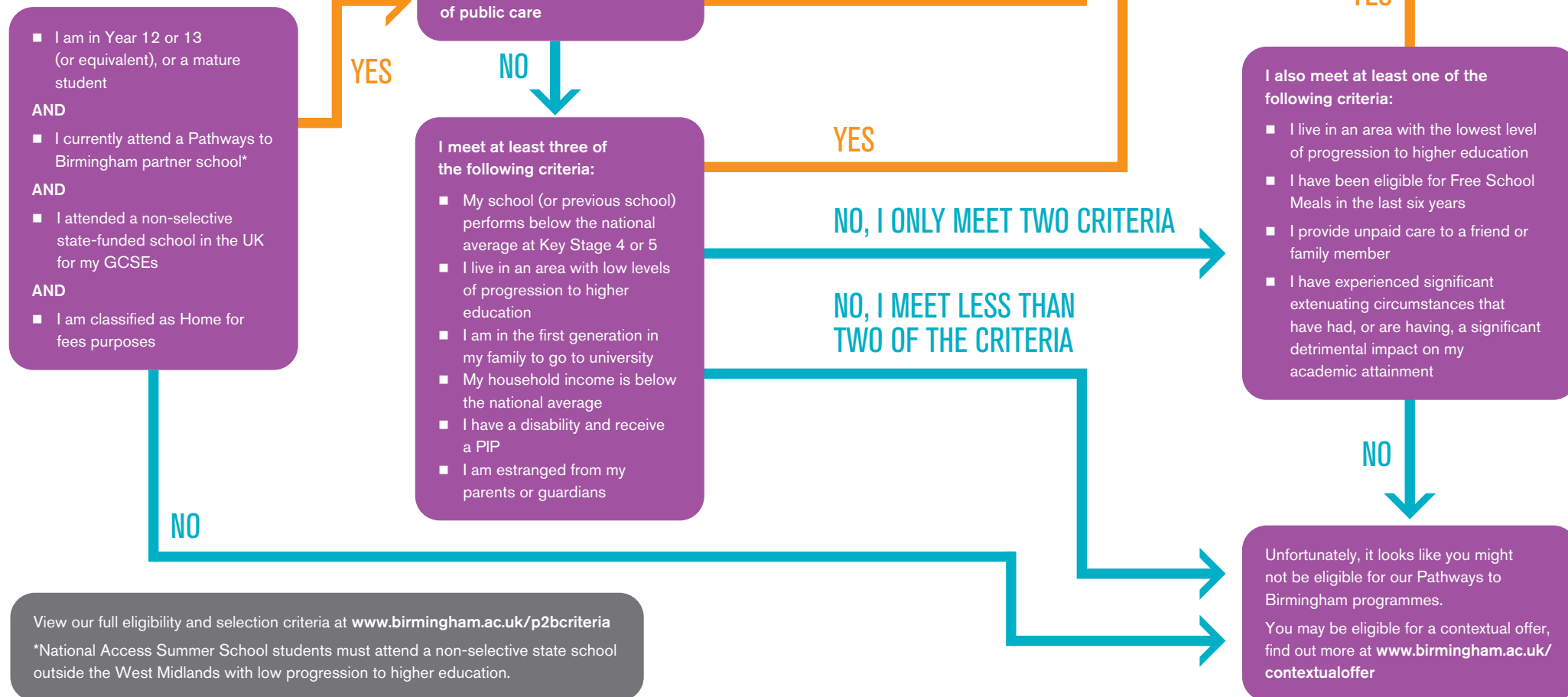
Performance on a Pathways to Birmingham programme will not affect eligibility for a standard offer. Please note that you are not guaranteed to receive an offer.

For more information, please visit www.birmingham.ac.uk/p2bcriteria

ELIGIBILITY CRITERIA

Use our flow chart to find out whether you would be eligible for our Pathways to Birmingham programmes.

START HERE





UNIVERSITY OF
BIRMINGHAM

Edgbaston, Birmingham,
B15 2TT, United Kingdom
www.birmingham.ac.uk

Please note the information in this brochure is correct at the time of publication (November 2020) but may be subject to change.

Designed and printed by

UNIVERSITY OF
BIRMINGHAM

| **creativemedia**