



UNIVERSITY OF
BIRMINGHAM

POSTGRADUATE OPEN DAY

Wednesday
16 March 2022

Aston Webb Building,
Edgbaston campus,
Birmingham, B15 2TT

Supported by

 FindAMasters.com

 FindAPhD.com

87%

OF OUR RESEARCH HAS
GLOBAL IMPACT

POSTGRADUATE STUDENTS MAKE UP
MORE THAN 40%
OF OUR STUDENT POPULATION
AND COME FROM OVER
150 COUNTRIES
AROUND THE WORLD

1ST MOST TARGETED UNIVERSITY IN THE UK
BY TOP EMPLOYERS
(HIGH FLIERS GRADUATE MARKET IN 2021)

**WORLD-CLASS
FACILITIES**

**RANKED 19TH
IN THE UK**

(THE TIMES GOOD UNIVERSITY GUIDE 2021)

**SAFE, FRIENDLY AND
AWARD-WINNING
CAMPUS**

FOUNDING MEMBER OF
THE RUSSELL GROUP

**RANKED IN THE
TOP 100
UNIVERSITIES
IN THE WORLD**

(QS WORLD UNIVERSITY RANKINGS 2022)

BEAUTIFUL 250-ACRE CAMPUS
CENTRED AROUND OUR
'GREEN HEART'
DEVELOPMENT

CONTENTS

Welcome to the University of Birmingham	3
How to make the most of your day	4
Plan your day	5
Why not visit...?	6
Postgraduate Study Fair and Advice Lounge	9
Subject - specific events	
College of Arts and Law	10
College of Engineering and Physical Sciences	12
College of Life and Environmental Sciences	14
College of Medical and Dental Sciences	16
College of Social Sciences	18
Our Campus	20
Living in Birmingham	21
University Accommodation	23
Private Accommodation	24
Sport	26
How to Apply	28
Applying for a Taught Programme	29
Applying for a Research Programme	30
Refreshments	32
Want to find out more?	33
Edgbaston campus map	36
Getting to the Open Day	Back cover



WELCOME TO THE UNIVERSITY OF BIRMINGHAM

Our Open Day gives you the opportunity to talk to our experts, discover more about the wide range of postgraduate taught and research opportunities available at Birmingham and expand your knowledge in your chosen field.



@UNIBIRMINGHAM
#HELLOBRUM

REGISTRATION

All visitors need to check in on the day. To minimise queuing, please pre-register online so that we can email you your ticket: www.birmingham.ac.uk/pgopendays

You will need to bring a copy of your ticket, which will contain a QR code, with you (either on paper or on your mobile device) to check in at Aston Webb Reception (R6).

LOST OR HAVE A QUESTION?

Information booths, staffed by our students, can be found at entrances and in the centre of our campus. Our postgraduate ambassadors, easily identifiable in bright blue tops, are also available all day on campus to help you find your way around.

IN AN EMERGENCY

Contact the nearest member of University staff. First aid assistance can be found at the Aston Webb Reception, Aston Webb Building (R6). You can also contact 0121 414 4444.

SPECIAL REQUIREMENTS

Please contact us in advance if you have any special requirements. Visitors with disabilities should get in touch so we can provide a mobility map and make suitable parking arrangements for you.

Email: pgopenday@contacts.bham.ac.uk

GET ONLINE ON CAMPUS

Network: **WifiGuest**. You will need to register and create a login, using your name and email, to access the network.



HOW TO MAKE THE MOST OF YOUR DAY

We're sure you'll have a great day finding out about all the opportunities we have to offer. Please also check the full, subject-specific schedule of talks and events on the following pages when planning your day.

CAMPUS TOURS DEPART FROM THE BRAMALL MUSIC BUILDING (R12) ON THE HOUR AND HALF-PAST THE HOUR. THESE LAST AROUND 45 MINUTES.



PLEASE MAKE YOUR WAY TO ASTON WEBB RECEPTION (R6) WHEN YOU ARRIVE ON CAMPUS TO CHECK IN.

TIME	EVENT	LOCATION
From 1.30pm	Check in	Aston Webb Reception (R7)
2.00pm – 4.00pm	Study Fair	Great Hall, Aston Webb (R7)
2.00pm – 4.30pm	Campus tours (departing on the hour and half past the hour)	Foyer, Bramall Music Building (R12)
2.00pm – 2.30pm	Careers talk; Support and Services	WG12, Aston Webb (R6)
2.30pm – 3.00pm	Masters Funding Talk	Elgar Concert Hall, Bramall Music Building (R12)
2.30pm – 3.30pm	Get into Teaching Talk	G03, Alan Walters Building (R29)
3.15pm – 3.45pm	PhD Funding Talk	Elgar Concert Hall, Bramall Music Building (R12)
4.00pm – 4.30pm	Introduction to Writing a PhD Research Proposal and Impact Statement	WG12, Aston Webb (R6)
4.00pm – 4.30pm	An overview of accommodation at Birmingham	Elgar Concert Hall, Bramall Music Building (R12)
4.30pm – 5.00pm	Student Experience and Wellbeing	G33, Aston Webb (R7)
4.45pm – 5.45pm	Insider Secrets for Postgraduate Researchers (suitable for MRes and PhD applicants) at Westmere	Aston Webb Reception, Aston Webb (R6)

CHAT WITH OUR STUDENT AMBASSADORS

Join us in the Great Hall for the Study Fair from 2.00pm – 4.00pm and chat with our postgraduate ambassadors about their experience at the University of Birmingham in our advice lounge. They will be happy to chat about all aspects of student life including funding your degree. Ask them about our Birmingham Master's Scholarships and our Postgraduate Progression Awards for more information!



PLEASE REFER TO CAMPUS MAP ON PAGE 36 FOR LOCATIONS

LOOKING FOR SCHOLARSHIPS?
VISIT PAGE 34 FOR MORE INFORMATION

PLAN YOUR DAY

TIME	YOUR DAY
1.00pm	
1.30pm	
2.00pm	
2.30pm	
3.00pm	
3.30pm	
4.00pm	
4.30pm	
5.00pm	
5.30pm	
6.00pm	
6.30pm	
7.00pm	

WHY NOT VISIT...?

R14 ON CAMPUS MAP

The Barber Institute of Fine Arts

Major works from Botticelli to Van Gogh adorn our award-winning art gallery. Admission is free and opening hours are 10.00am – 5.00pm, so pop in if you have half an hour to spare.


G12 ON CAMPUS MAP

Winterbourne House and Garden

Open 10.30am – 4.00pm, Winterbourne House is set within seven acres of tranquil botanic gardens. Entry is free for prospective students with their Open Day ticket and £1 for their guests.



THE BARBER INSTITUTE OF FINE ARTS



WINTERBOURNE HOUSE AND GARDEN

R4 ON CAMPUS MAP

Lapworth Museum of Geology

Enabling visitors to explore life over the past 3.5 billion years, the Lapworth Museum showcases exceptional objects from one of the UK's most outstanding geological collections, with state-of-the-art galleries and a range of innovative and interactive exhibits – all completely free of charge.

From rocks and fossils to volcanoes, earthquakes and even dinosaurs, the Museum captures the imagination of all ages. Open 10.00 – 5.00pm.

A large, detailed skeleton of a Tyrannosaurus Rex is the central focus of the image. It is mounted on a white platform and surrounded by a glass railing. The skeleton is shown in a standing position, with its head turned slightly to the left. The background shows a museum gallery with high ceilings, large windows, and other exhibits. The text "LAPWORTH MUSEUM OF GEOLOGY" is overlaid in large, white, sans-serif capital letters on the left side of the image.

LAPWORTH MUSEUM OF GEOLOGY

SHORT COURSES



UPSKILL AND DEVELOP YOUR CAREER WITH THE UNIVERSITY OF BIRMINGHAM'S NEW MICROCREDENTIAL COURSES. EACH COURSE HAS BEEN DEVELOPED TO EQUIP YOU WITH IN-DEMAND PROFESSIONAL SKILLS AND INSIGHTS AND PROVIDE A SPRINGBOARD ONTO FURTHER STUDY. UPSKILLING THROUGH SHORT COURSES IS A GREAT WAY TO CONTINUE YOUR PROFESSIONAL AND PERSONAL DEVELOPMENT WITH FLEXIBILITY AT ANY LOCATION WHILE GAINING AND DEVELOPING RELEVANT KNOWLEDGE. FOR MORE INFORMATION, PLEASE VISIT:

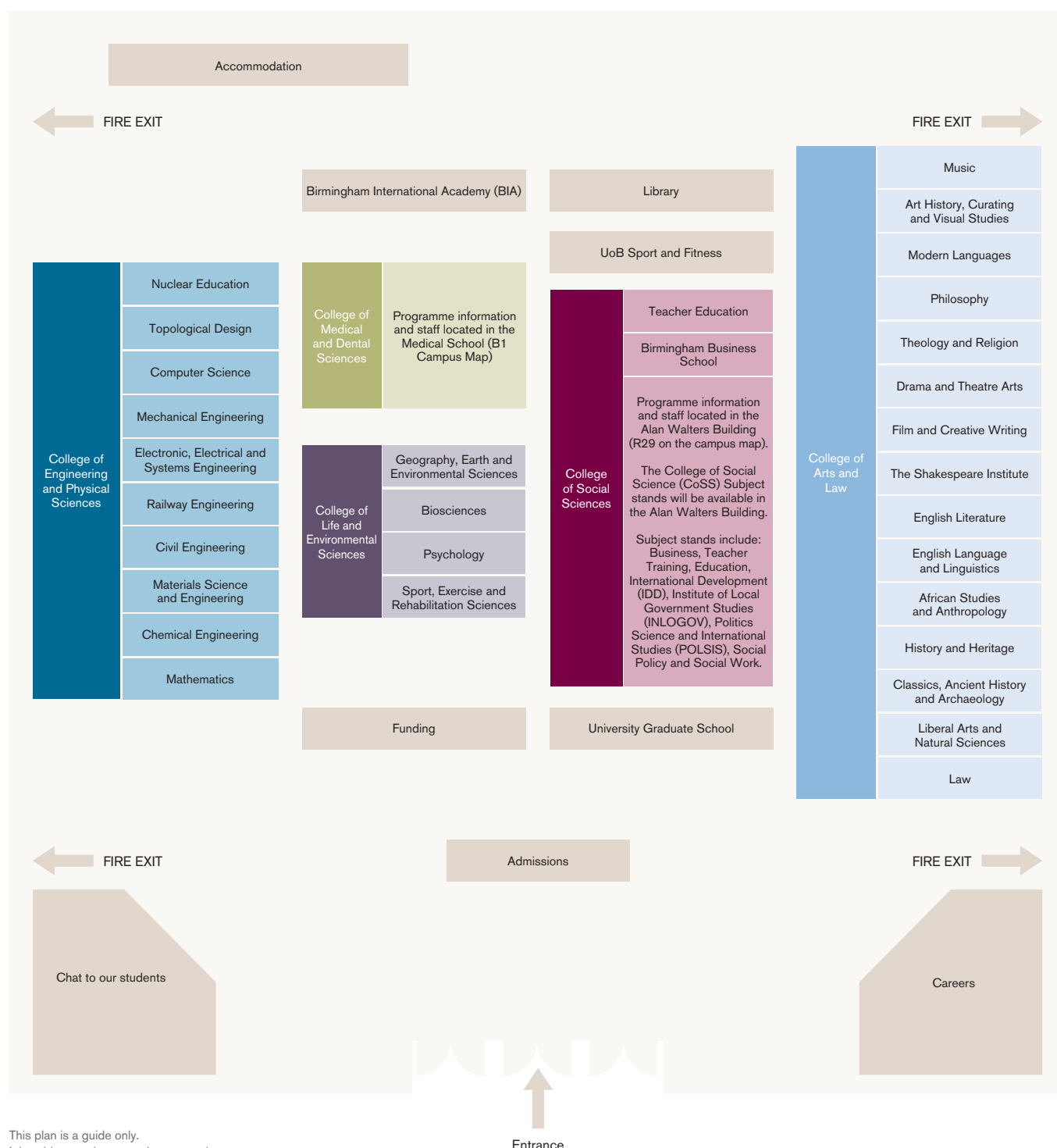
WWW.BIRMINGHAM.AC.UK/SHORT-COURSES



POSTGRADUATE STUDY FAIR AND ADVICE LOUNGE

14.00PM – 16.00PM, GREAT HALL,
ASTON WEBB BUILDING (R6)

Our Study Fair and Advice Lounge offer a fantastic opportunity to talk to representatives from all of the University's colleges and support networks. You can learn about the variety of services and exciting experiences that are available to our vibrant postgraduate community at Birmingham. There will also be a funding stand located in the Student Hub (R7, to the left of the Great Hall).



This plan is a guide only.
It is subject to change and not to scale.

SUBJECT-SPECIFIC EVENTS

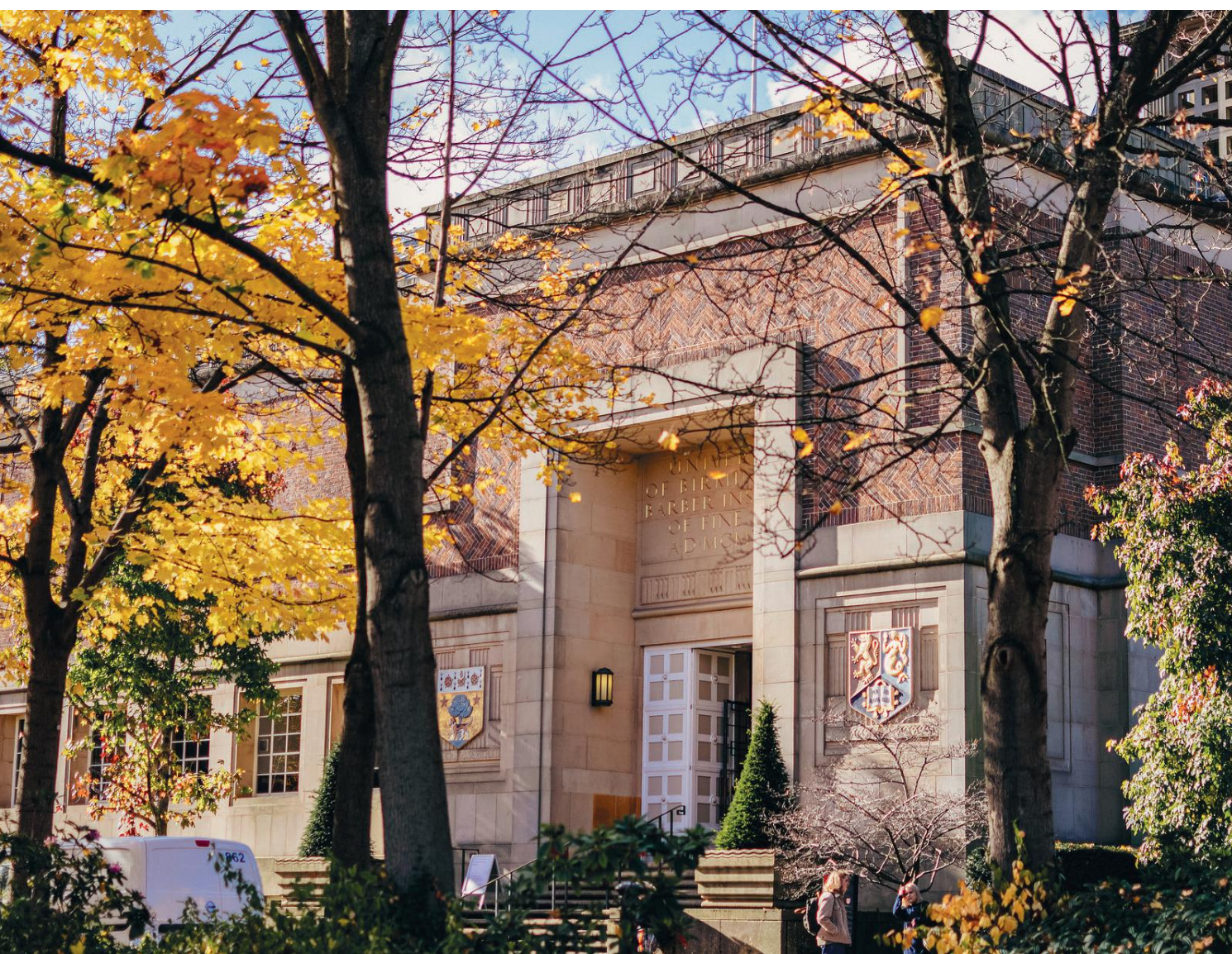
COLLEGE OF ARTS AND LAW

WE ARE ALSO HOSTING A SERIES OF DEPARTMENT SPECIFIC VIRTUAL ZOOM SESSIONS DURING THE WEEK COMMENCING 4 APRIL. PLEASE SEE: WWW.PG.BHAM.AC.UK/EVENTS FOR DETAILS.



ACADEMIC SCHOOL	TIME	EVENT	LOCATION
Birmingham Law School	4.30pm – 5.15pm	Introduction to the LLM programmes - Dr Henok Asmelash and LLM student Luned Jewell.	Room 2125, Frankland Building (R2)
	4.30pm – 5.15pm	Introduction to PhD Research opportunities at Birmingham Law School - Dr John Childs and PhD student Angela Eggleton	Room 2124, Frankland Building (R2)
	5.30pm – 6.15pm	Introduction to the MSc Responsible Data programme - Emma Ahmed-Rengers and current student Annette Akinola	Room 114, Birmingham Law School (R1)
School of English, Drama and Creative Studies	5.30pm – 6.15pm	Introduction to the School of English, Drama and Creative Studies - Dr John Fagg and a student panel	Room 1125, Frankland Building (R2)
School of Philosophy, Theology and Religion	4.30pm – 5.15pm	Introduction to the School of Philosophy, Theology and Religion - Dr Martin Pickup, Dr Amy Daughton and a student panel	Lecture Theatre 1, Birmingham Law School, (R1)
School of History and Cultures	5.30pm – 6.15pm	Introduction to the School of History and Cultures - Dr Jonathan Willis, Dr Simon Yarrow and a student panel	Lecture Theatre 1, Birmingham Law School (R1)

ACADEMIC SCHOOL	TIME	EVENT	LOCATION
School of Languages, Cultures, Art History and Music	4.30pm – 5.15pm	Introduction to the School of Languages, Cultures, Art History and Music - Professor Sara Jones and a student panel	Room 1125, Frankland Building (R2)
	Barber Institute of Fine Arts Tours		
	10.00am – 5.00pm	Visit our on campus art gallery at your leisure with a self-guided tour. Pick up a free ticket from the Art History stand	The Barber Institute of Fine Arts (R14)
	Bramall Music Building Tours		
	2.00pm – 2.30pm	Take a tour of our new £16 million Bramall Music Building and state of the art learning facilities	Bramall Music Building (R12)



SUBJECT-SPECIFIC EVENTS

COLLEGE OF ENGINEERING AND PHYSICAL SCIENCES

ACADEMIC SCHOOL	TIME	EVENT	LOCATION
Chemical Engineering	4.00pm – 5.00pm	Talk: An overview of postgraduate programmes in the School of Chemical Engineering - Dr Tim Overton	Room 124, Chemical Engineering (Y11)
	5.00pm – 6.00pm	1:1 drop in sessions with academic leads - Dr Tim Overton, Dr Helen Onyeaka, Dr Iain Kings	Room 112, Chemical Engineering (Y11)
	5.00pm – 6.00pm	Student-led department tours	Ground Floor, Atrium, Chemical Engineering (Y11)
Computer Science	2.00pm – 6.00pm	Visit the School of Computer Science and find out more about our MSc and Research programmes. Talk to staff and students, and see what facilities we can offer you.	Atrium, Computer Science (Y9)
	4.15pm – 5.00pm	Talk: Introduction to MSc study in the School of Computer Science - Dr Leonardo Stella	Room UG07, Murray Learning Centre (R28)
	4.15pm – 5.00pm	Talk: An overview of Research in the School of Computer Science - Dr Peter Hancox	Room UG06, Murray Learning Centre (R28)

ACADEMIC SCHOOL	TIME	EVENT	LOCATION
Engineering	4.00pm – 6.00pm	Drop in session with academics for our MSc programmes in the School of Engineering	Design Centre, New School of Engineering (Y8)
Mathematics	4.00pm – 5.00pm	Talk: Introduction to MSc Studies in the School of Mathematics - Dr David Leppinen	Lecture Theatre B, Watson Building (R15)
Materials Science and Engineering	4.00pm – 5.00pm	Drop in session with academics and students for the MSc Materials Science and Engineering programme - Dr Mike Jenkins	C Block Atrium, Metallurgy and Materials (G6)



SUBJECT-SPECIFIC EVENTS

COLLEGE OF LIFE AND ENVIRONMENTAL SCIENCES

ACADEMIC SCHOOL	TIME	EVENT	LOCATION
Biosciences	3.30pm – 4.30pm	<p>Introduction to Master's programmes in the School of Biosciences:</p> <ul style="list-style-type: none"> ■ MSc Microbiology and Infection ■ MSc Molecular Biotechnology ■ MSc Toxicology ■ MSc Bioinformatics ■ MRes Molecular and Cellular Biology ■ MRes Molecular Mechanistic Toxicology <p>Speakers - Dr Jan Kreft, Dr Nik Hodges, Dr Eugenio Sanchez-Moran, Dr Michelle Buckner</p>	NG08, School of Biosciences (R27)
	4.30pm – 5.00pm	<p>Opportunity for tours of the facilities led by current postgraduate students</p>	From NG08, School of Biosciences (R27)
Sport, Exercise and Rehabilitation Sciences	3.30pm – 4.30pm	<p>Introduction to MSc Physiotherapy (pre-registration) Speaker - Katie Cronin</p>	Lecture Theatre 1, School of Sport, Exercise and Rehabilitation Sciences (Y14)
	3.30pm-4.00pm	<p>Introduction to MSc Sport Coaching & MSc Physical Education and Wellbeing Speaker - Mark Griffiths</p>	Zoom (online) - Contact us for joining instructions
	4.30pm – 5.00pm	<p>Opportunity for tours of the facilities led by current postgraduate students</p>	From Lecture Theatre 1, School of Sport, Exercise and Rehabilitation Sciences (Y14)

ACADEMIC SCHOOL	TIME	EVENT	LOCATION
Geography, Earth and Environmental Sciences	3.30pm – 4.30pm	Introduction to our Environmental Health Master's programmes: <ul style="list-style-type: none"> ■ MSc Environmental Health ■ MSc Public and Environmental Health Sciences ■ MSc Health, Safety and Environment Management Speakers - Zena Lynch, Dr Surindar Dhesi	Room 301, School of Biosciences (R27)
	3.30pm – 4.30pm	Introduction to our Atmospheric Science Master's programmes: <ul style="list-style-type: none"> ■ MSc Air Pollution Management and Control ■ MSc Applied Meteorology and Climatology Speakers - Rhiannon Blake, Dr Martin Widmann	Room 125, Geography Building (R26)
	3.30pm – 4.30pm	Introduction to our MSc Urban and Regional Planning programme Speaker - Dr Austin Barber	Lecture Theatre E102, Biosciences Building (R27)
	3.30pm – 4.30pm	Introduction to our MSc Hydrogeology programme Speaker - Professor John Tellam	Education Room, Lapworth Museum (R4)
	4.30pm – 5.00pm	Opportunity for tours of the facilities led by current postgraduate students	Meet at The Undercroft, Geography Building (R26)
Psychology	3.30pm – 4.00pm	Introduction to MSc programmes in the School of Psychology: <ul style="list-style-type: none"> ■ MSc Brain Imaging and Cognitive Neuroscience ■ MSc Computational Neuroscience and Cognitive Robotics ■ MSc Psychology Speaker - Dr Pia Rotshtein	Room NG16, Gisbert Kapp Building (G8)
	3.30pm – 4.00pm	Introduction to Clinical Psychology Doctorate (ClinPsyD) Speaker - Dr George Johnson	Room G16, 52 Pritchatts Road (G9)
	4.00pm – 4.30pm	Introduction to MSc Mental Health (Youth/Interdisciplinary) Speaker - Dr Sally Adams	Room NG16, Gisbert Kapp Building (G8)
	4.00pm – 4.30pm	Introduction to Forensic Psychology programmes: <ul style="list-style-type: none"> ■ Forensic Psychology Practice Doctorate (ForenPsyD) ■ Forensic Clinical Psychology Doctorate (ForenClinPsyD) Speaker - Dr Owen Forster	Room G16, 52 Pritchatts Road (G9)

SUBJECT-SPECIFIC EVENTS

COLLEGE OF MEDICAL AND DENTAL SCIENCES

EVENT	TIME	PROGRAMME	LOCATION
Drop-in sessions - your opportunity to speak with an academic from the programme	2.00pm – 4.00pm	Bioimaging - Professor Davide Calebiro and Dr Steve Thomas	Wolfson Common Room, Medical School (B1)
	2.00pm – 4.00pm	Bioinformatics - Dr Deena Gendoo	Wolfson Common Room, Medical School (B1)
	2.00pm – 4.00pm	Biomedical Innovation - Dr Atif Shahzad	Wolfson Common Room, Medical School (B1)
	2.00pm – 4.00pm	Biomedical Research - Cardiovascular Sciences - Dr Steve Thomas and Professor Neil Morgan	Wolfson Common Room, Medical School (B1)
	2.00pm – 4.00pm	Clinical Health Research - Dr Nikos Efstathiou	Wolfson Common Room, Medical School (B1)
	2.00pm – 4.00pm	Clinical Oncology - Dr Jean Assender and Dr Tracey Perry	Wolfson Common Room, Medical School (B1)
	2.00pm – 4.00pm	Clinical Trials - Razia Meer-Baloch and Dr Sara Brooks	Wolfson Common Room, Medical School (B1)
	2.00pm – 4.00pm	Dentistry programmes - Dr Mo Hadis	Wolfson Common Room, Medical School (B1)
	2.00pm – 4.00pm	Functional Genome Biology - Dr Andy Turnell	Wolfson Common Room, Medical School (B1)
	2.00pm – 4.00pm	Genomic Medicine - Dr Andrew Bell	Wolfson Common Room, Medical School (B1)
	2.00pm – 4.00pm	Health Economics programmes - Dr Louise Jackson and Dr Raymond Oppong	Wolfson Common Room, Medical School (B1)
	2.00pm – 3.00pm	Immunology and Immunotherapy - Dr Will Jenkinson	Wolfson Common Room, Medical School (B1)

EVENT	TIME	PROGRAMME	LOCATION
Drop-in sessions - your opportunity to speak with an academic from the programme	2.00pm – 4.00pm	Midwifery - Teresa Shalofsky	Wolfson Common Room, Medical School (B1)
	2.00pm – 4.00pm	Nursing MSc (pre-registration) - Dr Chris Wagstaff	Wolfson Common Room, Medical School (B1)
	2.00pm – 4.00pm	Physician Associate Studies - Dr Laura Rickett	Wolfson Common Room, Medical School (B1)
	2.30pm – 4.00pm	Postgraduate research degrees - Karen Carter, Postgraduate Manager	Wolfson Common Room, Medical School (B1)
	2.00pm – 4.00pm	Practice Certificate in Independent Prescribing - Sarah Baig	Wolfson Common Room, Medical School (B1)
	2.00pm – 4.00pm	Public Health programmes - Dr Derek Ward	Wolfson Common Room, Medical School (B1)
	2.00pm – 4.00pm	Respiratory Medicine - Dr Alice Turner	Wolfson Common Room, Medical School (B1)
	2.00pm – 4.00pm	Stem Cell Biology and Application - Professor Jon Frampton and Dr Mary Clarke	Wolfson Common Room, Medical School (B1)
Subject talks	2.30pm – 3.00pm	Biomedical Innovation - Dr Atif Shahzad and Professor John Terry	CM08, Medical School (B1)
	2.30pm – 3.00pm	Clinical Trials - Razia Meer-Baloch and Dr Sara Brookes	CM06, Medical School (B1)
	2.30pm – 3.00pm	Physician Associate Studies - Dr Laura Rickett	WF15, Medical School (B1)
	2.30pm – 3.00pm	Public Health MPH - Dr Derek Ward	CM04, Medical School (B1)
	2.30pm – 3.00pm	Stem Cell Biology and Application - Professor Jon Frampton	CM07, Medical School (B1)

SUBJECT-SPECIFIC EVENTS

COLLEGE OF SOCIAL SCIENCES

ACADEMIC SCHOOL	TIME	EVENT	LOCATION
Business	2.00pm – 4.00pm	Business: College of Social Sciences Postgraduate Study Fair Stand	Ground floor foyer, Alan Walters Building (R29)
	2.00pm – 4.00pm	Drop-in session for taught MSc, MBA and PhD programmes offering an opportunity to meet with some of our programme directors, academics and current students.	Room G11, Alan Walters Building (R29)
Education	2.00pm – 4.00pm	Education: College of Social Sciences Postgraduate Study Fair stand	Ground floor foyer, Alan Waters Building (R29)
	3.00pm – 3.45pm	Drop-in session for Education and Social Justice	Room 112, Alan Walters Building (R29)
	2.30pm – 3.30pm	Drop-in Session for Postgraduate Research (PhD, MRes and MA by Research)	Room 111, Alan Walters Building (R29)
	2.30pm – 3.30pm	Talk: Disability Inclusion and Special Needs	Room 103, Alan Walters Building (R29)
	Teacher Education		
	2.00pm – 4.00pm	Teacher Training: College of Social Sciences Postgraduate Study Fair Stand	Ground floor foyer, Alan Walters Building (R29)

ACADEMIC SCHOOL	TIME	EVENT	LOCATION
Education	2.30pm – 3.30pm	<p>Get into Teaching talk: find out more from our University of Birmingham Teacher Education team on our Primary and Secondary routes as well as careers in teaching.</p> <p>You will also have the opportunity to meet School Direct partners.</p> <p>Following the talk, you will have the opportunity to have informal discussions with our Train to Teach academics and School Direct partners.</p> <p>Refreshments will be provided.</p>	<p>Room G03, Alan Walters Building (R29)</p> <p>Informal discussions followed after the talk in Ground Floor Foyer, Alan Walters Building (R29)</p>
Institute of Local Government Studies	2.00pm – 4.00pm	<p>INLOGOV: College of Social Sciences Postgraduate Study Fair Stand.</p> <p>Drop-in: come to our stand at the CoSS Study fair in Alan Walters to find out more about our Postgraduate programmes in the The Institute of Local Government Studies (INLOGOV).</p>	Ground floor foyer, Alan Walters Building (R29)
International Development Department	2.00pm – 4.00pm	International Development Department (IDD): College of Social Sciences Postgraduate Fair Stand	Ground floor foyer, Alan Walters Building (R29)
	2.30pm – 3.30pm	Talk: Studying International Development at Postgraduate level	Room 121, Muirhead Tower (R21)
Politics and International Studies	2.00pm – 4.00pm	Politics and International Studies (POLSIS): College of Social Sciences Postgraduate Study Fair Stand	Ground floor foyer, Alan Walters Building (R29)
	2.30pm – 3.30pm	Talk: 'Studying Postgraduate Politics and International Relations at the University of Birmingham: An Introduction to the POLSIS programmes'	Room 112, Muirhead Tower (R21)
Department of Social Policy, Sociology and Criminology	2.00pm – 4.00pm	Department of Social Policy, Sociology and Social Care: College of Social Sciences Postgraduate Study Fair Stand	Ground floor foyer, Alan Walters Building (R29)
	2.30pm – 3.30pm	Talk: Introduction to Postgraduate Social Policy Programmes at Postgraduate level	Room G15, Muirhead Tower (R21)
Department of Social Work and Social Care	2.00pm – 4.00pm	Department of Social Work and Social Care: College of Social Sciences Postgraduate Study Fair Stand	Ground floor foyer, Alan Walters Building (R29)
	2.30pm – 3.30pm	Talk: Studying Postgraduate Social Work at Birmingham	Room 429, Muirhead Tower (R21)

OUR CAMPUS

With magnificent architecture and a green, leafy site, our campus provides an inspirational environment for your studies.

**THE
MEDICAL
SCHOOL**

**QUEEN
ELIZABETH
HOSPITAL**

**UNIVERSITY
STATION**

**MAIN
LIBRARY**

**THE GREEN
HEART OF
OUR CAMPUS**

**BRAMALL
MUSIC
BUILDING**

**LAPWORTH
MUSEUM OF
GEOLOGY**

**ASTON WEBB
STUDENT HUB**

**THE GUILD
OF STUDENTS
AND
THE BARBER
INSTITUTE OF
FINE ARTS**

**SPORT
& FITNESS**

Our main Edgbaston campus is packed with green, open spaces and a combination of redbrick buildings and stunning new architecture that houses facilities, shops, cafes and study spaces.

LIVING IN BIRMINGHAM

Birmingham is an inspiring place to live; it is the UK's most populous city after London, boasting a diverse culture and unique history.

THE CITY

Birmingham is a vibrant and thriving city with a diverse community. We are one of Europe's youngest major cities, with almost 40% of our population under 25. We are also the top regional city for quality of life in the UK. In fact, our students love Birmingham so much that 48% decide to stay in the region after they graduate. Birmingham is more than somewhere to study; it's somewhere to build a successful future. If you choose to live in Birmingham, there are many University or private accommodation options available, which suit all budgets.



Explore our city:
www.birmingham.ac.uk/city



LOCATION

Studying here, you will enjoy the best of both worlds: a beautiful, historic, green campus that is just a few minutes away from the heart of an exciting, modern city. With our own railway station on campus, you can be in the city centre in less than eight minutes. There is something for everyone in Birmingham, and you are sure to receive a warm welcome in one of the most culturally diverse cities in Britain.

SHOPPING

The city centre offers a first-class retail experience; from famous brands to independent stores, Birmingham has something for everyone. You will find a wealth of choice, from large shopping centres like Bullring, Selfridges, Mailbox and Grand Central, to diverse vintage clothing stores and artisan workshops in the world-famous Jewellery Quarter.



FOOD

Birmingham is filled with foodies, which means new restaurants and food festivals are always popping up across the city. The multi-award-winning Digbeth Dining Club hosts independent food stalls, with pop-ups across the city, while our very own farmers' market on campus offers locally sourced and environmentally-friendly produce. Our independents regularly host events across the city, including day and night markets, pop-ups and collaborations, all helping you to discover new favourites.

CULTURE

Birmingham has an exciting culture and history. From our world-leading museums and art galleries to the historic industrial district of Digbeth, there is so much to explore at the heart of our city. Birmingham is also proud to host many annual urban festivals such as Birmingham Pride and the Mostly Jazz, Funk & Soul Festival.

UNIVERSITY ACCOMMODATION

Our dedicated postgraduate accommodation is located across our three student villages: Vale Village, Selly Oak Village, and Pritchatts Park Village, all of which are within walking distance of the Edgbaston campus.



To secure your place in University-owned accommodation you will need to make an advance rent payment of £550 at the time of booking. This is deducted from your residence fees.



We have more than 30 places to eat and drink across our campus and accommodation.



For more information on postgraduate accommodation, please visit www.birmingham.ac.uk/accommodation



TRAVELLING TO AND FROM CAMPUS

There are several ways to travel to our campus. From bike lanes to canal paths, we are well connected to many areas of our city.

Birmingham Cycle Revolution is making cycling easier. A 4km, fully segregated cycleway links Selly Oak and the University with the city centre. Completed in January 2019, the cycleway provides a safe, healthy and green method of travelling around the city.

Our campus is also well served by bus routes, with the 61, 63, X21 and X22 services running frequently from the city centre. From Moseley, the 1A stops right outside the University and from Harborne, the 48 and 244 provide services which drop you close to the University.

As we have our own railway station, University, you can get regular trains travelling from Birmingham New Street to campus in under eight minutes, making trips to and from the city centre quick and easy.

VALE VILLAGE

Just a 15-minute walk from campus, The Vale is set in a beautiful lakeside parkland. Studios and studio apartments are available for postgraduate students. A bar, restaurant, café, convenience store and laundrette contribute to a community atmosphere so you feel right at home.

SELLY OAK VILLAGE

A five-minute walk from campus, with the vibrant Selly Oak high street on your doorstep. Our postgraduates are located together in Jarratt Hall, which offers en-suite rooms with shared kitchens. Prices are approximately £161 per week. This is the perfect environment to make new friends while allowing you time to concentrate on your studies.

PRITCHATTS PARK VILLAGE

Close to campus, Harborne, and University station, Pritchatts Park provides self-catering accommodation for postgraduates in a lovely landscaped setting. The Village's design creates a sense of community, with shared facilities such as meeting rooms, an airy lounge, a quiet study zone and a games room offering the perfect environment to get to know your fellow postgraduates. Prices start from £115 per week.



If you are studying at the Shakespeare Institute, there are many sources of accommodation in Stratford-upon-Avon and we will give you as much assistance as we can to help you find somewhere to live nearby.

www.birmingham.ac.uk/stratfordliving



Although this information was correct at the date of publication (September 2021), details and other conditions are subject to revision, on occasion. Services may be added, changed or withdrawn. Please visit www.birmingham.ac.uk/accommodation for the most up-to-date accommodation information.

PRIVATE ACCOMMODATION

Many of our students choose to find housing in the private sector. A variety of housing options, including single flats, shared houses, and properties for families can be found in the local area. Our students also choose to live in other areas of the city, including the city centre, in shared or single-occupancy properties, ranging in price to suit your budget.



Find more advice on private accommodation in Birmingham:
www.birmingham.ac.uk/rentingprivately

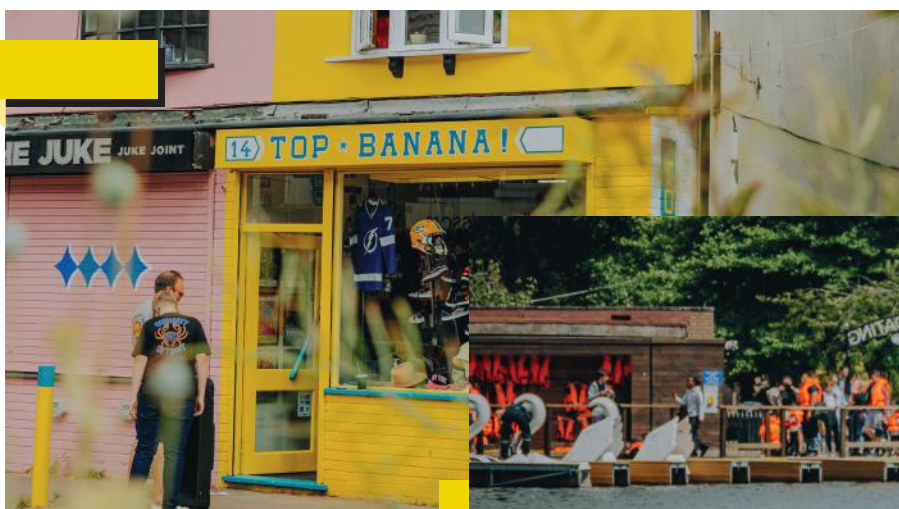


Photo: Jolyon Holroyd

SEARCH FOR PROPERTIES

Birmingham Studentpad is our official property search engine. Only Midland Landlord Accreditation Scheme (MLAS) landlords can advertise their properties through our website. This means that all landlords have signed a Code of Conduct agreement to be a fit and proper landlord, and will adhere to all legislation. Use our property finder to search for short- or long-term accommodation:

www.birminghamstudentpad.co.uk

Close to campus

Selly Oak is the closest residential area, just a five-minute walk from the University campus. The weekly cost of rent ranges from £75 – £140, usually excluding utilities.

Host

Host offers two choices for our students: Host Student Apartments and The Metalworks. Offering en-suite rooms and premium studios, Host Student Apartments are located just a few minutes' walk from campus, with prices starting from £184 per week. The Metalworks sits right on the edge of campus and offers a variety of rooms, with prices starting from £164 per week.

Unite Students

Across the road from campus on the Bristol Road, studios are available at the Battery Park and Athena Studios sites, with prices starting from £224 per week.

Community Living

We also have a private-sector-focused service called Community Living. You can find out more information on our website:

www.community-living.org.uk

City Living

Some of our postgraduates prefer to live in the heart of the city. The commute is an easy train journey from New Street to University station, making city living an appealing choice. We work with private accommodation providers to offer a fantastic range of options to suit your individual needs.

If you're looking to immerse yourself in suburban Birmingham life, the villages of Moseley and Harborne are popular with our students. With many bars, cafés and restaurants, these cosmopolitan areas are perfect for young professionals and students, with many privately rented properties available. For a slightly cheaper – but by no means less desirable – option, Kings Heath neighbours Moseley and is a lively, popular area to live.



OUR RESEARCH FACILITIES

We continually invest in resources and improve research facilities to ensure our postgraduate researchers are able to pursue their ideas and transfer their knowledge. We have an extensive range of labs supporting innovative research in 21st-century disciplines such as robotics, gene therapy, human biomaterials and hydrogen gas fuelling.

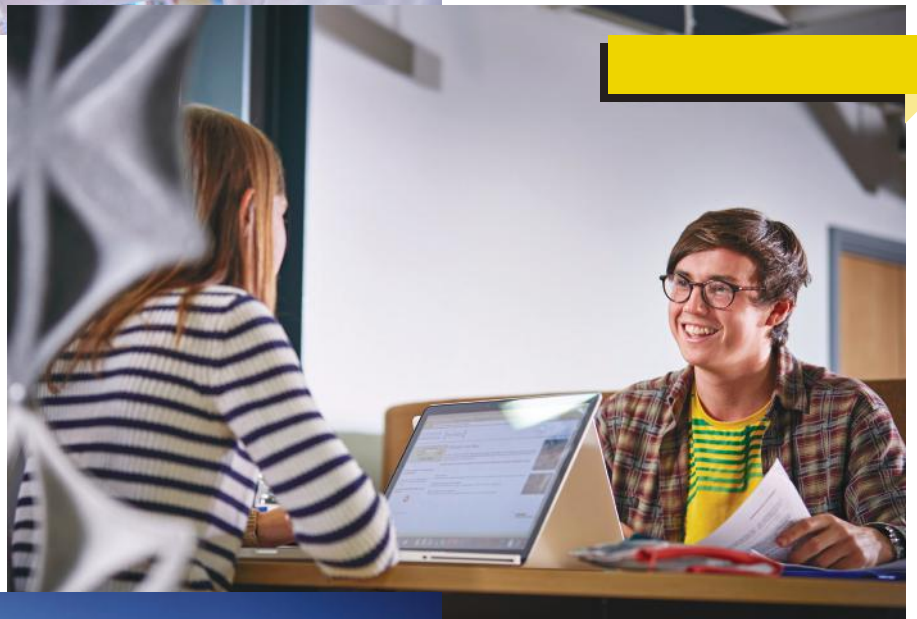


Explore our facilities online:

www.birmingham.ac.uk/researchfacilities

THE STUDENT HUB

At the heart of our campus, the Aston Webb Student Hub is home to the Careers Network, Registry and Student Services. Dedicated teams provide our students with information and support, from consulting with students on thesis submissions, visas, and ID cards, to counselling, wellbeing coaching, and specialist learning support. We also offer appointments and workshops run by our specialist services in our consultation rooms to help you succeed at Birmingham.



NEW DEVELOPMENTS

Our Edgbaston campus is currently seeing major developments in terms of its teaching and study facilities. Our new Teaching and Learning Building is a hub for education, providing lecture theatres and space for 1,000 students to carry out group or private study. The newly opened Collaborative Teaching Laboratory features labs and practical teaching spaces for STEM subjects, along with a state-of-the-art School of Engineering building opened in 2020.



Explore our campus developments here:

www.birmingham.ac.uk/building



SPORT

At Birmingham, sport is for all – from world-class performance to general fitness. The power of sport to motivate and inspire goes so much further than sporting ability. From keeping fit and leading a healthy, balanced lifestyle to learning a new activity, you will never have a better opportunity to get involved, have fun and make new friends.





OFFICIAL
PARTNER



UNIVERSITY OF
BIRMINGHAM

BIRMINGHAM 2022 COMMONWEALTH GAMES

The eyes of the world will be on Birmingham in 2022 when we host the Birmingham 2022 Commonwealth Games!

The city and the University are Official Partners for the Games, and together we are perfectly placed to host such an event, at the centre of the UK with vast experience of hosting world-class international events in our vibrant and diverse city.

We can't wait to welcome athletes and spectators from around the world onto campus, where we'll be hosting hockey and squash as part of the Games, as well as being home to the largest of the athlete villages at our Vale Village accommodation. Birmingham is already well-known for its sporting pedigree and playing our part at the centre of a major international tournament further cements our position amongst the global sporting elite, as well as encouraging sports for all, benefiting our students, the city and the region in the longer term through investment in the Games and its infrastructure.

FIND OUT MORE ABOUT BIRMINGHAM 2022:
WWW.BIRMINGHAM.AC.UK/BIRMINGHAM2022

FIND OUT MORE ABOUT SPORT AT BIRMINGHAM:
WWW.BIRMINGHAM.AC.UK/SPORT

HOW TO APPLY

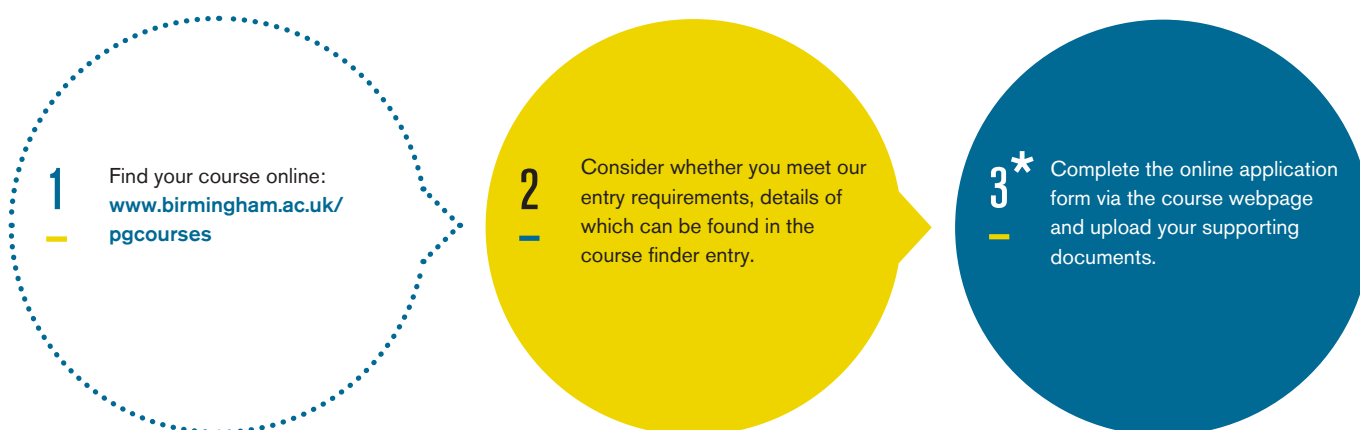
Applying to our postgraduate courses is an easy, online process. Formal applications are made directly to us using our online course finder, but the process will vary depending on your programme and how it has been advertised. In these pages, find out more about the application process for each level of study.



APPLYING FOR A TAUGHT PROGRAMME

Formal applications for taught programmes are made directly to us using the course finder: www.birmingham.ac.uk/pgcourses

Applying for a taught programme usually involves three easy steps:



* Some taught courses may charge a £50 application fee. For further information, visit www.birmingham.ac.uk/pgappfee

APPLICATION DEADLINES:

Please note that some programmes may close early if places are filled, or to meet specific deadlines for external partners.

September 2022 programmes

UK: 31 August 2022

International students (requiring a visa):
1 July 2022

ARE YOU APPLYING FOR TEACHER TRAINING OR SOCIAL WORK PROGRAMMES?

Register and apply for our Social Work programmes through UCAS, which usually opens in September.

To apply to our Initial Teacher Training programmes you will need to use the new DfE Apply service, which opened on 12 October.



APPLYING FOR A RESEARCH PROGRAMME

At Birmingham, there are generally two routes to a research degree. Follow the application steps on this page, or next, depending on your preferred route.

APPLYING FOR AN 'ADVERTISED PhD'

You can apply to an 'advertised PhD', which means it is part of an established research project and is usually funded by the University or other funding body. Generally, advertised PhDs are associated with the physical and life sciences subjects.



Find your course online:

www.birmingham.ac.uk/pgcourses

Search our advertised PhDs:

www.birmingham.ac.uk/findaphd

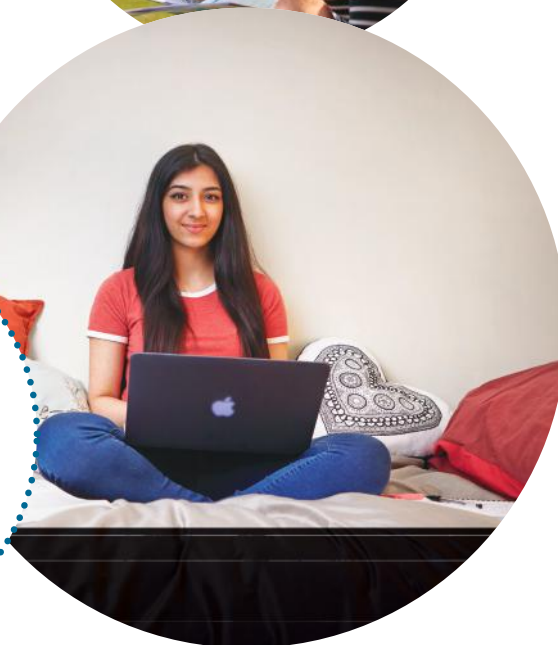


1

Find and identify your project via our advertised PhDs database:
www.birmingham.ac.uk/findaphd

2

Apply via course finder to the relevant PhD subject area. You may be applying to the specific project or be asked to apply to a larger subject area and identify the project title within your application.



3

Prepare your statement and supporting documents.

4

Submit your application online via course finder and upload your supporting documents.



APPLYING FOR A RESEARCH PROGRAMME

APPLY TO PROPOSE YOUR OWN RESEARCH

You can propose your own research rather than joining an existing research project. You will need to submit a research proposal to conduct a unique piece of research and identify your proposed supervisor. Funding can be found from other sources such as scholarships, charities, loans and self-finance. Generally, these PhDs are associated with the arts and social sciences.



Search for a potential supervisor:
[www.birmingham.ac.uk/
findasupervisor](http://www.birmingham.ac.uk/findasupervisor)

1

Choose which research degree (PhD, MA/MSc by Research or MRes) and consider the research area and themes.

2

Begin your supervisor search:
[www.birmingham.ac.uk/
findasupervisor](http://www.birmingham.ac.uk/findasupervisor)

3

Consult with a potential supervisor or department.

4

Explore your funding options:
[www.birmingham.ac.uk/
pgfunding](http://www.birmingham.ac.uk/pgfunding)

5

Write your research proposal using our online advice ([www.birmingham.ac.uk/
proposalwriting](http://www.birmingham.ac.uk/proposalwriting)).

6

Submit your application via course finder and upload your supporting documents, including your research proposal and potential supervisor name(s).

WRITING YOUR RESEARCH PROPOSAL

A research proposal is a concise and coherent summary of your proposed research. It is a key part of your application, on which potential supervisors will decide if your research is something they can support.

We've provided help and advice for each of the steps of writing your proposal here: www.birmingham.ac.uk/proposalwriting



REFRESHMENTS

Take some time out of your day to grab a bite to eat and a coffee at our recommended places. Our campus is fully open during the week and so there are more options around campus to choose from than the list below.

LOCATION (MAP NUMBERS IN BRACKETS)	OPENING TIMES
Fellows Coffee Shop at the Bramall (R12)	8.00am – 4.00pm
Starbucks Muirhead (R21)	8.00am – 4.30pm
Starbucks Brookes (Y18)	8.00am – 5.00pm
Costa Sport (O7)	8.00am – 6.00pm
Costa University Centre (R23)	8.00am – 6.00pm
Alan Walters Building (R29)	8.30am – 4.00pm
Campus Express (R28)	8.30am – 4.30pm
Medical School (B1)	8.30am – 5.00pm
Arts Café (R16)	9.00am – 4.00pm
Cantina (R23)	11.00am – 3.00pm
The Chippy (R23)	11.00am – 3.00pm



WANT TO FIND OUT MORE?



ONLINE EVENTS

We run online sessions throughout the year so you can ask us questions from wherever you may be in the world through our dedicated postgraduate site. These include videos, virtual tours, and live Q&A sessions with staff, current students, and alumni.

We also have an informal network of postgraduate ambassadors who will answer your questions based on their own experience of campus life, their department, the city, the transition to postgraduate study and the support services offered by the University.

Find out more: www.pg.bham.ac.uk

CAFÉ MASTER'S AND CAFÉ PhD

Café Master's and Café PhD are informal social events designed to enable anyone interested in postgraduate study to network with current students. By attending, you will be able to get face-to-face, first-hand and impartial advice on what it's actually like to be a postgraduate student at Birmingham.

You'll be able to discuss any questions that you have about postgraduate study in a relaxed and social atmosphere, get expert advice on choosing the most suitable postgraduate programme for you, the application process and sources of funding. You'll also be able to enjoy free refreshments.

You are welcome to take part, regardless of what stage you are at in the decision-making process.

We run Café events throughout the year. Check the website for details of upcoming events: www.birmingham.ac.uk/pgvisit

CAMPUS TOURS

We run regular campus tours led by student ambassadors which allow you to explore our beautiful campus in Edgbaston. Our ambassadors are current students who will be able to give an insight into postgraduate study at the University. Find out more: www.birmingham.ac.uk/pgvisit

'The Guild of Students is a diverse, democratic, student-led organisation which works to ensure you get the most out of university life, both academically and socially. We exist separately from the university and are here to represent students and their interests.'

As Postgraduate Officer I am here to represent and support you, and make sure your voice is heard both here at the Guild of Students and at the University. There are many ways that you can get involved with your community, such as volunteering, joining a sport or society or becoming a Student Rep.

If you have any questions about the postgraduate community here at Birmingham, or the Guild of Students, feel free to get in touch with me. You can find me on social media @guild_postgrad on most platforms.'

DANIELLE MURINAS, Postgraduate Officer at the Guild of Students



LOOKING TO INVEST IN YOUR FUTURE? WE ARE.



MASTER'S SCHOLARSHIPS AVAILABLE FOR 2022 ENTRY

BIRMINGHAM MASTER'S SCHOLARSHIP SCHEME

We are offering over 200 awards of £2,000 to support the brightest and best applicants wishing to undertake Master's study at the University during 2022 – 23.

We want you to excel at Birmingham and to stand out in an increasingly competitive, global job market once you graduate. Alongside our robust personal and academic support, we offer financial support to ensure the very best candidates can undertake postgraduate study with us. The Birmingham Master's scholarships will be awarded to over 200 candidates beginning their Master's study in 2022 and awards will be based on previous academic and/or professional performance. Candidates are expected to attain a First-class or Upper Second-class (2:1) Honours degree (or the equivalent) for their undergraduate qualification and to provide a strong personal statement in evidence of their achievements.

Applications are now open. The deadline for applications is 23:59 on Saturday 30 April 2022.

POSTGRADUATE PROGRESSION AWARD: FEE DISCOUNTS FOR FINAL YEARS

Our Postgraduate Progression Awards – offering final year undergraduates a fee discount of £1,500 for postgraduate study – are our commitment to you as a Birmingham graduate. We want to ensure that, as a Birmingham graduate you have the support needed to continue studying and developing your career. With the familiarity of the University of Birmingham you will continue to have access to our resources, facilities, and support networks to continue your studies and shape your future.

The tuition fee discounts for our progressing undergraduate students are our commitment to you, in appreciation of your choice to stay with us for your postgraduate degree.

FIND OUT MORE:
[WWW.BIRMINGHAM.AC.UK/
PGSCHOLARSHIPS](http://WWW.BIRMINGHAM.AC.UK/PGSCHOLARSHIPS)



UNIVERSITY GRADUATE SCHOOL



The University Graduate School (UGS) is committed to supporting and creating a vibrant, interdisciplinary postgraduate researcher (PGR) and postgraduate taught (PGT) community where every postgraduate can access valuable opportunities to meet with fellow postgraduates and develop transferable skills. As part of this commitment, we offer a variety of academic, social and wellbeing activities throughout the year. Find out more at www.birmingham.ac.uk/ugs

Flagship events

UGS Talks: Bringing UoB's postgraduate community together with a series of thought-provoking talks and networking.

Three Minute Thesis (3MT®) and My PGT in 3: Deliver an engaging three minute presentation about your research/studies.

Postgraduate Research Festival: A celebration of our postgraduate community that includes our Research Poster Conference and UGS Awards presentation.

Bursaries

Each year the UGS recruits 10 PGRs and 10 PGTs who receive a bursary in return for acting as ambassadors who support and promote UGS activities, and initiate and deliver their own events for postgraduates. This is a great opportunity for postgraduates who are passionate about community building and want to develop their skills.

All postgraduates are also welcome to apply for funding from our Activity Fund to run their own events and workshops.

Westmere Postgraduate Research Hub

Westmere is the centre of our postgraduate researcher community, providing study space, training and social space, dedicated to PGRs. The garden is also available for use in the warmer months, for example as a venue for BBQs, or a place to relax.



EDGBASTON CAMPUS MAP

Red Zone

- R0 The Harding Building
- R1 Law Building
- R2 Frankland Building
- R3 Hills Building
- R4 Aston Webb – Lapworth Museum
- R5 Aston Webb – B Block
- R6 Aston Webb – Great Hall
- R7 Aston Webb – Student Hub
- R8 Physics West
- R9 Nuffield
- R10 Physics East
- R11 Medical Physics
- R12 Bramall Music Building
- R13 Poynting Building
- R14 Barber Institute of Fine Arts
- R15 Watson Building
- R16 Arts Building
- R17 Ashley Building
- R18 Strathoona Building
- R19 Education Building
- R20 J G Smith Building
- R21 Muirhead Tower
- R22 University Centre
- R24 Staff House
- R26 Geography
- R27 Biosciences Building
- R28 Murray Learning Centre
- R29 The Alan Walters Building
- R30 Main Library
- R31 Collaborative Teaching Laboratory
- R32 Teaching and Learning Building
- R33 Fry Building
- R34 Cuore

Blue Zone

- B1 Medical School
- B2 Institute of Biomedical Research including IBR West
- B3 Wellcome Clinical Research Facility
- B4 Robert Aitken Institute for Clinical Research
- B5 CRUK Institute for Cancer Studies and Denis Howell Building
- B6 Research Park
- B7 90 Vincent Drive
- B8 Henry Wellcome Building for Biomolecular NMR Spectroscopy
- B9 Medical Practice and Dental Centre
- B10 Advanced Therapies Facility
- B11 BioHub Birmingham
- B12 Health Sciences Research Centre (HSRC)

Yellow Zone

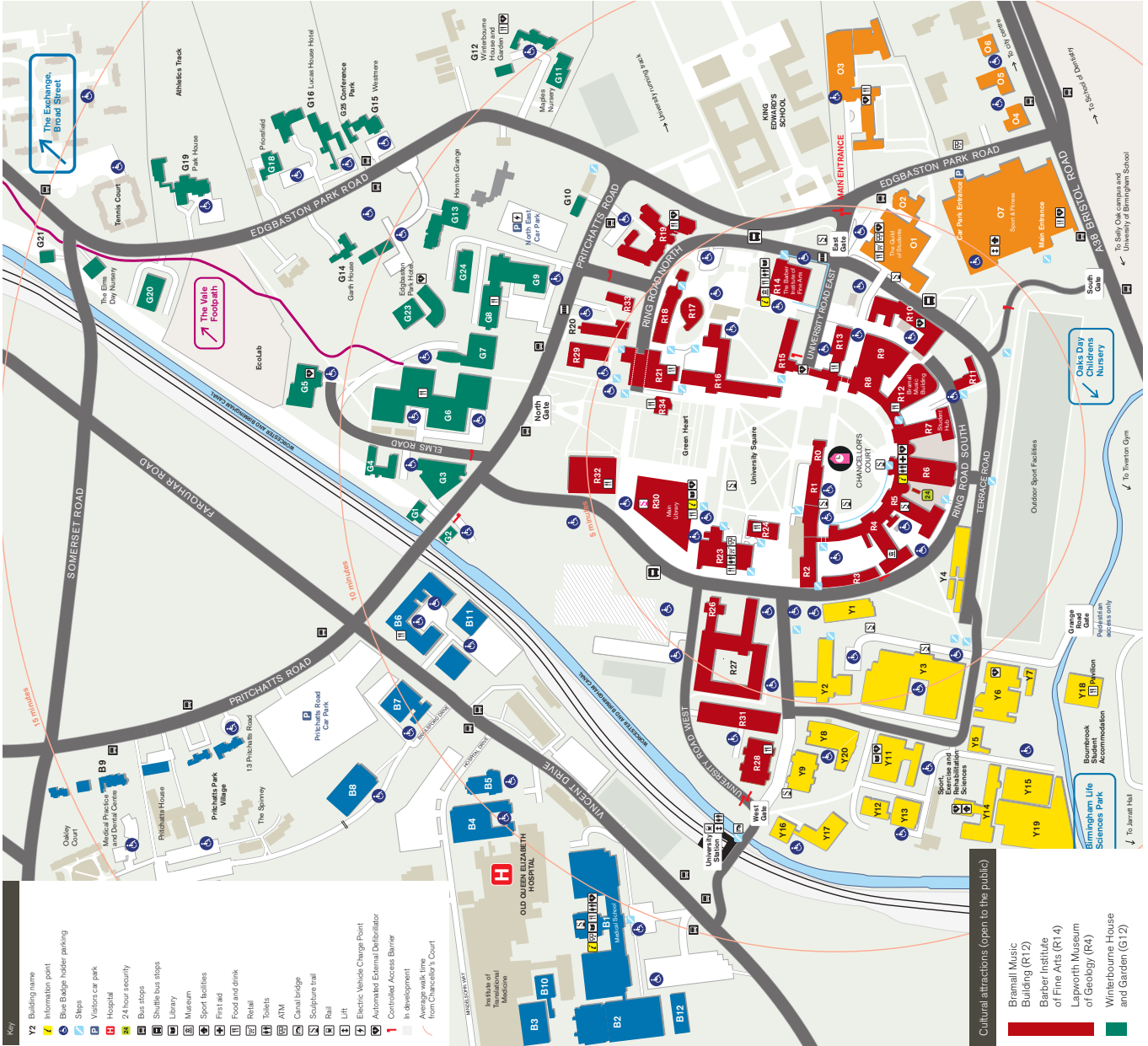
- Y1 The Old Gym
- Y2 Haworth Building
- Y3 Engineering Building
- Y4 Terrace Huts
- Y5 Estates West
- Y6 Maintenance Building
- Y7 Grounds and Gardens
- Y8 The School of Engineering
- Y9 Computer Science
- Y11 Chemical Engineering
- Y12 Biochemical Engineering
- Y13 Chemical Engineering Workshop
- Y14 Sport, Exercise and Rehabilitation Sciences
- Y15 Civil Engineering Laboratories
- Y16 Institute of Occupational and Environmental Medicine
- Y17 Public Health
- Y18 Bournbrook Student Accommodation
- Y19 NBIF
- Y20 UKRRIN

Orange Zone

- O1 The Guild of Students
- O2 St Francis Hall
- O3 University House
- O4 Ash House
- O5 Beech House
- O6 Cedar House
- O7 Sport & Fitness

Green Zone

- G1 32 Pritchatts Road
- G2 31 Pritchatts Road
- G3 European Research Institute
- G4 3 Elms Road
- G5 Computer Centre
- G6 Metallurgy and Materials
- G7 IRC Net Shape Laboratory
- G8 Gisbert Kapp Building
- G9 52 Pritchatts Road
- G10 54 Pritchatts Road – Institute for Global Innovation
- G11 Maples Nursery
- G12 Winterbourne House and Garden
- G15 Westmere
- G16 Lucas House Hotel
- G18 Priorsfield
- G19 Park House
- G20 Wolfson Advanced Glasshouses
- G22 Elms Day Nursery
- G24 Centre for Human Brain Health
- G25 Green Zone Conference Park
- G13 Hornton Grange
- G14 Garth House
- G23 Edgbaston Park Hotel and Conference Centre
- G24 Centre for Human Brain Health



NOTES

GETTING TO THE OPEN DAY

By rail

We are fortunate enough to have our own railway station, 'University'. Most cross-country services to Birmingham arrive at Birmingham New Street station and up to six trains an hour depart from there for University on the cross-city line (final destination Redditch or Bromsgrove). The journey should take under 10 minutes and the centre of the main campus is just a five-minute walk from University station.

Postgraduate ambassadors (wearing bright blue tops) will be at the station to direct you to campus.

By coach

There are frequent express coach services to Birmingham from most UK cities. The long-distance coach station is in Digbeth in the city centre. Regular bus services to the University (nos. 61, 63, X21 and X20) run from St Martin's Queensway in the city centre.

By car

A limited number of car parking spaces are available for visitors at North East Car Park.

For information on all of the travel options available to you, please visit:
www.birmingham.ac.uk/pgopendays



Designed and printed by

UNIVERSITY OF
BIRMINGHAM

creativemedia



UNIVERSITY OF
BIRMINGHAM

Edgbaston, Birmingham,
B15 2TT, United Kingdom
www.birmingham.ac.uk