



UNIVERSITY OF
BIRMINGHAM

Undergraduate Prospectus 2025

We begin
We activate
birmingham.ac.uk



This is where it begins

Imagine yourself at a green and spacious campus university just minutes from the vibrant energy of the UK's most diverse city.

You'll find your feet among friends with over 300 clubs and societies, and one global community.

You'll discover new perspectives with opportunities to study abroad for every student.

And, when industry is calling, your degree from a global top 100 university will be recognised and valued by leading employers worldwide.



Contents

Welcome	1	Your Guild of Students	37
Your campus	3	How to apply	39
Your city	9	Entry requirements	41
Your accommodation	15	Financial support	43
Widening access to university	23	What can I study with...?	45
Supporting you	25	Course directory	47
A global university experience	28	The Birmingham Offer Calculator	69
Sport & Fitness	29	Map	70
Careers Network	34		



Welcome

Students are at the heart of everything we do. By choosing the University of Birmingham, you will join a large and diverse community, be exposed to stimulating new concepts, and learn alongside inspiring lecturers and peers. You will study, socialise and relax on our beautiful, vibrant campus – which is just a stone's throw from the centre of an exciting and busy city that is rich in arts and culture, innovation and sport, shopping, food and drink, nightlife, and industry.

Our education is a genuine partnership between students and academics, and is designed to be different to anything you have experienced before. We will encourage you to think boldly and independently, pursue your own interests, and develop the career path that is right for you.

You will be taught by staff whose research aims to help solve our world's biggest challenges. For example, we're spearheading efforts to confront gender inequality, from violence against women and children to tackling political rights and participation. And we're working with partners to develop clean energy technologies and find long-term solutions to end fuel poverty.

Sport is an important part of life for our community, and we have a strong track record in sport science research and education. Birmingham is a destination of choice for some of the largest global sporting events, most recently the Commonwealth Games. The legacy of the 2022 Games is helping to create a healthier, happier, better connected, and more prosperous West Midlands.

Come and explore what Birmingham has to offer at one of our open days, talk to current students, and experience the University and city for yourself. Discover what studying at Birmingham could mean for you.

We look forward to welcoming you to our campus and playing our part in your future success.

Professor Adam Tickell
Vice-Chancellor
University of Birmingham



Your campus

Our green and spacious campus has all the space you need to study, relax and socialise.

With all the amenities of a small town, you'll find shops, bars, and cafés, plus medical and dental surgeries, sports facilities, and even our own train station to transport you to the heart of the city in just seven minutes.

Feeling the need for cultural inspiration? From the Barber Institute of Fine Arts and Bramall Music Building to Winterbourne House and Garden and the Lapworth Museum of Geology, you'll be spoilt for choice.



Take a virtual campus tour:
[birmingham.ac.uk/
virtual-tour](https://birmingham.ac.uk/virtual-tour)





All the space you need

The Green Heart

12 acres of spacious parkland at the beating (green) heart of campus. This is a unique and rejuvenating space where you can study, meet friends and unwind.

Main Library

The perfect learning environment for study and research with access to study spaces, media rooms and video editing booths – whatever you need to suit your learning style.

Guild of Students

Home to bars, shops, support services and food outlets, the Guild is a hub of activity. Find out more about what's on offer on page 37.

The Student Hub

Our friendly and dedicated Student Hub teams are here to support you with queries from ID cards and dissertation submissions, to careers and counselling.

Future-focused facilities

Discover purpose-built spaces to support your undergraduate study and prepare you for your future career including the Collaborative Teaching Laboratory, Teaching and Learning Building, and the School of Engineering.

Sustainability on campus

From setting ambitious targets to achieve net zero carbon by 2045 and delivering the world's smartest campus, to aligning our research to address global challenges, we are using our expertise to tackle global sustainability challenges.



Explore life on campus:
[birmingham.ac.uk/
 campuslife](https://birmingham.ac.uk/campuslife)

A day in the life of Maisy

09:00 – Attend a two-hour lecture

I have on average six to eight hours of lectures a week. During this time, I will be taught theories, literature and examples of real life research.

13:00 – Lunch on campus

The food outlets on campus are great spaces to socialise with friends. My personal favourite is going to the main canteen for a burrito.

14:30 – Head to the Library

I grab a coffee from the Library café and get working on my assignments. University is a great way to learn how to be proactive and independently get your work done.

20:00 – Geography Society event

Joining Kinvig (a society for Geography students) is one of my biggest tips for any prospective Geography student. There are numerous events held throughout the year, from Alton Towers to a big black-tie ball. I've made so many friends and developed a strong bond with many coursemates.

11:00 – Attend a one-hour seminar

Seminars are smaller interactive workshops (around 20 students). These are a continuation of the previous lecture, where discussions, debates and activities are explored, learning teamwork and collaborative skills.

14:00 – Drop-in hours

Each lecturer has drop-in hours every week where you can go to their office and ask any questions on the module and receive assessment help. I find this a great way to be able to tailor my learning.

16:30 – Go to University Sport & Fitness

To end my day of working hard, I love to go to the gym. I find it is a great way to relax and get my body moving. My favourite thing to do there is use the Olympic-length swimming pool and then go to the sauna.



“ I'm a third year Geography student completing an integrated Masters next year. I'm a member of the Geography society, and the Marketing society. After university, I aspire to work in the environmental sector. ”

Maisy
Third year, MSci Geography



Discover a day in the life of more students:
birmingham.ac.uk/dayinthelife

Your city

The second city, your second home.

Birmingham is a vibrant and inspiring place to live, with a rich culture and diverse community. Almost 40 per cent of Birmingham's population is under 25, making it one of the youngest major cities in Europe.

Our cosmopolitan city has a unique history and so much to see and do. It's no wonder our students fall in love with the city and almost half decide to stay in the region after they graduate. Birmingham is more than somewhere to study; it's a place to get future ready.



Discover the city:
birmingham.ac.uk/city



“ The beauty of city living is the availability of both chains and amazing independent restaurants and bars, particularly in places like the Jewellery Quarter. ”

Harvey



Culture

Birmingham is home to a vibrant cultural scene of galleries, museums, theatres and cultural assets. The Birmingham Hippodrome is the UK's most popular single auditorium theatre, whilst Birmingham Museum and Art Gallery has over 40 galleries and Ikon is an internationally acclaimed contemporary art venue. The Electric is the UK's oldest working cinema showing cult classics and independent films.

Food and drink

With new restaurants and food festivals always springing up in Birmingham, you're bound to find something to your taste. Hockley Social Club has won many awards for hosting independent food stalls and pop-ups across the city. With so many independent events, collaborations, and day and night markets, you'll soon discover new favourite foods and places to eat.

Shopping

Our ever-changing city offers everything you need from independent shops to famous brands in the city centre. You'll be spoilt for choice. As well as major shopping attractions like the Bullring, Selfridges, Mailbox and Grand Central, you can find vintage clothing stores and artisan workshops in the world-famous Jewellery Quarter.

Music and nightlife

When the sun goes down, Birmingham doesn't sleep. From worldwide superstars at Resorts World Arena and indie nights at The Sunflower Lounge, to classical performances at the Symphony Hall and Northern soul at the Night Owl, you'll find something here to suit you.



Discover the city:
birmingham.ac.uk/city

Beyond the Bullring

Birmingham is more than just a city centre. We have a wide variety of lively, spirited and friendly suburbs surrounding the campus and across the city for you to explore.

Moseley

Just two miles from campus, Moseley's independent scene is popular with creatives and students alike, and with monthly farmers' and arts markets, it's easy to see why.

The Jewellery Quarter

A national treasure that remains a hub of industry, producing 40 per cent of British jewellery to this day. Explore Georgian streets lined with indie shops, bars and galleries, and much-loved live music venue, the Jam House.

Digbeth

Named "the coolest neighbourhood in Britain" by *The Sunday Times*, this former industrial quarter is a hub of culture and creativity. Home to bar experiences where you can play arcade games, ping-pong, curling, baseball, mini-golf, and there's even a giant adult ballpit! There's also an abundance of vintage clothes shops and an indie cinema, The Mockingbird.

Bournville

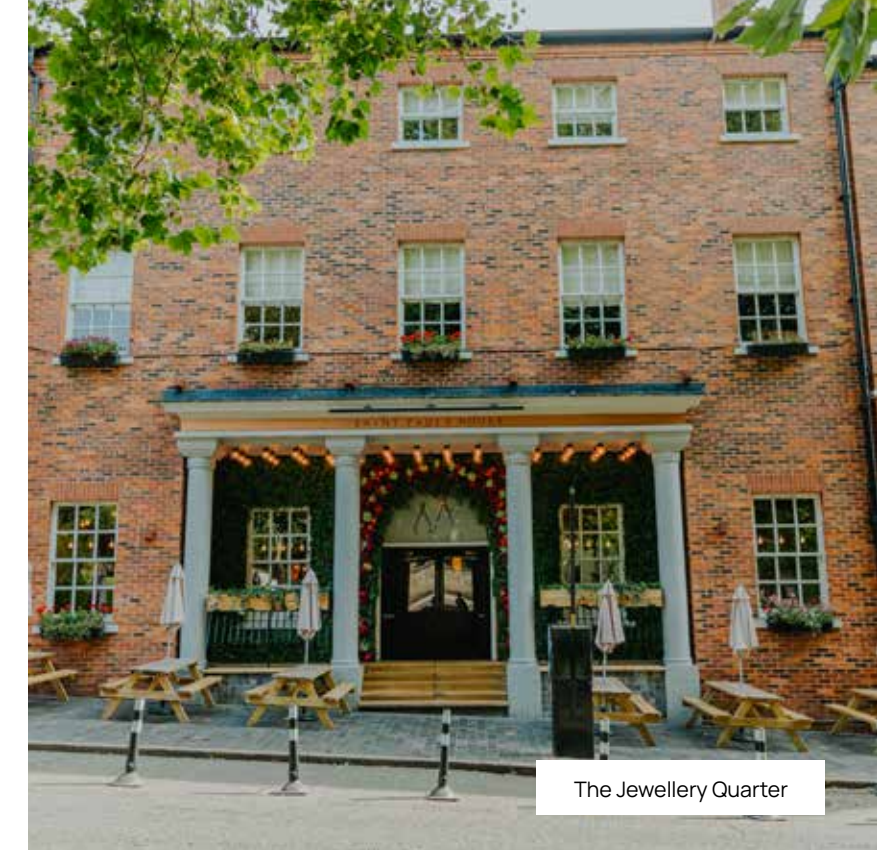
This iconic chocolate box suburb is just a thirty minute walk from campus. Best known for the Cadbury chocolate factory, it's also home to three leafy parks, a Tudor manor house, independent bookshops and cafes.



Discover the city:
birmingham.ac.uk/city



Moseley



The Jewellery Quarter



Digbeth



Bournville

Your accommodation

All our accommodation can be found at one of our three student villages: Pritchatts Park, The Vale, and Selly Oak. Each village has its own unique character and is in close proximity to campus. With almost 7,000 rooms to choose from, you'll have no trouble finding the right place to call home.



The Vale Village

Wake up to green parkland and lakeside views in our largest student village. The Vale is known for its sociable atmosphere and is home to a student bar, restaurant, café, and some brilliant study and social spaces. Here you can enjoy having everything you need, right on your doorstep.

Ensuite, shared, studio, and catered accommodation options available. **Prices from £96 per week***.



Pritchatts Park Village

Home to our first low-carbon accommodation, Pritchatts Park offers contemporary student homes, nestled in leafy grounds. Life here centres around the accessible Pritchatts House hub, which boasts a games room, coffee bar and comfy lounge spaces – all within walking distance of campus. University Station, the Medical School, and the bustling suburb of Harborne are also nearby.

Ensuite, shared, duplex, and catered accommodation options available. **Prices from £153 per week***.



Selly Oak Village

Enjoy the best of both worlds at Selly Oak, where campus living meets city life. Selly Oak's vibrant high street, University lecture theatres, and sports pavilion are all just minutes away – and when you want to explore the city, it's a short bus or train ride away. Selly Oak is also home to the majority of residences managed by our trusted accommodation partners.

Self-catered, ensuite and shared bathroom accommodation options available. **Prices from £174 per week***.

**Indicative 2023/24 prices. Please visit website for up to date information.*



More than just a room

Student accommodation at the University of Birmingham is so much more than just a room.

It's your chance to be a part of a thriving and diverse community, made up of thousands of students from over 100 countries worldwide. An exciting and rich place to live, here you can enjoy a student experience like no other.

A home away from home

Free high-speed Wi-Fi, utility bills, and basic room insurance are all included in your accommodation. You'll also benefit from having friendly and caring staff on hand 24/7, plus your own Customer Service Manager.

ActiveRes

Relax and get fit for free with our Active Residences sports and fitness classes. Available exclusively to our residents, you can enjoy everything from yoga and Pilates to badminton and tennis, all hosted in or nearby your accommodation.

Student Mentors

If you're after guidance, advice, or simply someone to have a friendly chat with, our Student Mentors are here to support you. They organise wellbeing events and social opportunities, too.

Hall Reps

Meet like-minded people and make new friends in your accommodation, courtesy of our Hall Reps. Every term, they put on a whole host of fun social events and activities for you to enjoy, from craft sessions to game nights. Best of all, they're all free to attend.



Your accommodation, guaranteed

We know how important it is to find your perfect home, especially in your first year at university.

That's why we guarantee you a room in our accommodation if you've accepted us as your firm choice on UCAS. All you need to do is apply for accommodation through our Accommodation Portal by 30 June (UK/Ireland students) or by 31 July (international students).

We will then be in touch on Results Day in August to invite you to book your room.



Explore accommodation:
birmingham.ac.uk/accommodation



Your room, your way

Unlike other universities, we give you the chance to book the room you want to live in, rather than allocating your accommodation, so you can feel at home from day one.

Breaking down barriers

Every student deserves to have a great experience. If you have a disability or additional needs, we're here to support you with purpose-built accessible accommodation.



Student Living Plus

Spend less time budgeting, shopping and meal planning, and more time enjoying university life with Student Living Plus – our answer to catered accommodation. Tuck into fresh food and drink on campus when you want to, while benefitting from a ten per cent discount at most outlets.



Explore Student Living Plus:
[birmingham.ac.uk/
studentlivingplus](https://birmingham.ac.uk/studentlivingplus)

A day in the life of Rob

09:00 – Lecture one

I have my first lecture of the day. These last around 50 minutes and focus on pure maths where I learn new and interesting topics. These are then built on by guided studies which focus more on examples than theory.

11:00 – Lecture two

My second lecture of the day consists of more applied maths building on previous modules. Lecturers are research leaders in their fields, so learning from the best always helps.

12:00 – Football

To let off some steam, I play 6-a-side campus league football with a group of friends against other students. This happens once a week all semester and can be a great laugh.

19:30 – Water polo

To finish off the day, I am part of the water polo team, and we train four times a week. On most Wednesdays, we have a BUCS (British Universities & Colleges Sport) game against other local universities.

10:00 – Supervisor meeting

I meet with my supervisor to discuss my research project, which is based around mathematical attainment in secondary school. Having a supervisor who specialises in the field that I want to explore is very useful.



13:00 – Study time

I have to study independently and complete any assignments given to me. I usually find a quiet study space, of which there are lots across campus, where I work for a few hours.



Discover a day in the life of more students:
birmingham.ac.uk/dayinthelife



“ I’m a third year Maths student who is hoping to do a PGCE. I am also the president of the water polo club and a part of DogSoc. Coming originally from Essex, after two years the University of Birmingham now feels like home. ”

Rob
 Third Year, BSc Mathematics

Widening access to university

We're committed to inclusivity and widening access to university for students of all backgrounds and circumstances. We offer programmes and initiatives to help pave your way to a bright future.

Pathways to Birmingham

A suite of programmes open to eligible Year 12 and 13 students, Pathways to Birmingham (P2B) offers a chance to experience and learn more about university. Once you complete a P2B programme, you also become eligible for a range of benefits.

Alternative offer

If you're offered a place to study with us, you'll get an alternative offer (typically two grades below the prospectus offer).

Enhanced funding

You'll become eligible for enhanced funding to support you during your studies. Further conditions apply.

New perspectives, new connections

Get a glimpse into university life and study, meet staff and students, and attend academic sessions.

Continued support

We'll help you transition from school/college to university through mentoring and events.

Birmingham Scholar community

When you start your degree with us, you'll become a Birmingham Scholar and get enhanced academic, emotional, and career support during your time here.



Contextual offer

Our contextual offer scheme recognises the potential of students with unique challenges that might have impacted their achievement at school or college.

If you're eligible, you'll get an offer that is one grade lower than the typical offer. You might be eligible if you've been in local authority care (and documented it on your UCAS form) or if you've received Free School Meals in the last six years.



Explore pathways to Birmingham:
birmingham.ac.uk/p2b



Find out if you're eligible:
birmingham.ac.uk/contextualoffer

Supporting you

Our support services are tailored to your personal needs, and available from before you arrive through to graduation and beyond.

Finding your feet

Your personal academic tutor will be on hand for advice and guidance, and if you're living in University accommodation, you will get support to settle in from trained and experienced students who have been where you are.

Wellbeing services

We offer professional support and resources to manage your physical, emotional and psychological wellbeing. Our multi-faith chaplaincy is open to all students and offers an inclusive space for meditation, relaxation and worship.

Money advice and support

Access to funding advice and support so you can relax, focus on your studies, and fully enjoy your time here, knowing that your finances are under control.

Disability support

We are an inclusive learning community. Whatever your disability, mental health, or learning support needs, we'll help you access appropriate support to make the most of your university experience.

Teaching and learning support

Our Academic Skills Centre provides workshops, online tutorials, and appointments with specialist advisors. Our peer-assisted study support scheme (PASS) offers informal study sessions between students in different years, too.

Careers support

Careers Network organise events with leading graduate employers, one-to-one consultations, and Alumni Mentoring opportunities. Our flexible programme enables you to develop your employability skills across over 200 on-campus activities.

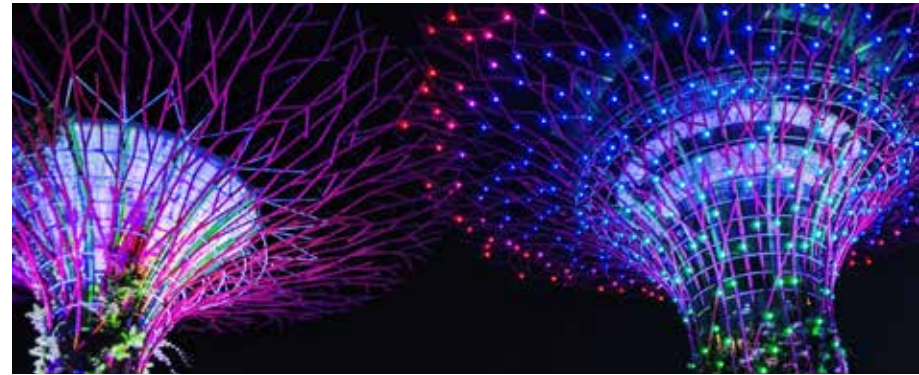
Working with our Guild of Students

Guild Advice is a professional student advice service that helps with any financial, academic, employment, housing, and immigration issues you may face during your time at university.



Explore student support:
[birmingham.ac.uk/
support](https://birmingham.ac.uk/support)





A global university experience

There are opportunities to go abroad for every student at Birmingham. Our extensive network of over 350 exchange partners offers a wealth of experiences, ranging from a year spent overseas, to shorter-term field trips, summer schools volunteering and internships.

We also offer undergraduate students the opportunity to spend a year in Dubai, hosted at our University of Birmingham Dubai campus.

As a University of Birmingham student, you will forge connections that extend beyond graduation. Academics, mentors and our community of students from over 150 countries all become part of your network, amplifying your potential for success in a global context.

“ My favourite parts of my year abroad were making friends from all over the world, enjoying good weather, and discovering hidden parts of new places. ”

Jess,
studied a year abroad split between Buenos Aires, Argentina and Marseille, France.



Explore study abroad opportunities:
birmingham.ac.uk/goglobal

Sport & Fitness

The University's Sport & Fitness club has a range of world-class facilities and services, including:

- Birmingham's first 50-metre pool with boom and moveable floor
- 200+ station gym
- Around 150 fitness classes per week
- Six glass-back squash courts
- Ten-metre climbing wall
- 2,000m² arena (with the capacity of 12 badminton courts)
- Dedicated Performance Centre to support elite student-athletes
- Steam room and sauna
- Martial arts dojo
- 800-seat arena-style sports hall
- Pitches include floodlit, water-based, 3G synthetic, natural turf and rubber combo
- Satellite gym in the nearby student housing area of Selly Oak



Membership and Pay & Go

Membership to the Sport & Fitness club gives you access to a huge range of facilities to keep you active and healthy at university. There are a range of student membership options to suit everyone's needs and budget, covering a huge range of Pay & Go activities including classes, social sport, court hire and much more.



Find out more:
sportandfitness.bham.ac.uk/join

Sport for everyone

Sport is one of the ways we bring our diverse community together – whether you're an elite athlete or looking to find your feet among friends, there's something here for everyone.

- 62 different sports clubs, from American Football to Ultimate Frisbee.
- Compete for one of the top 10 universities for sport in the British University and Colleges Sport (BUCS) leagues.
- Men's and women's teams in the National Hockey League.
- Dual Career Accredited to support high-performing athletes to manage their sport alongside their studies.
- Campus League offers friendly weekly matches for cross-departmental competition.
- Social sport sessions including introductory social sport sessions for beginners.
- Volunteer opportunities in a range of sports.
- Student sport live-streamed on YouTube every week during term time.
- Watch live sport at our on-campus sporting events.

Sport scholarships

Our scholarship programmes provide high-performance student-athletes with the opportunity to progress along their sporting pathways and maximise their time at university. Our Elite Dual Career Athlete Pathway (EDCAP) and Performance Sport Scholarships provide relevant, needs-based support within our dedicated Performance Centre.



Find out more about sport scholarships:
sportandfitness.bham.ac.uk/sport/sport-scholarships

Forge your future

You don't have to wait until you graduate to get focused on your future. From day one, you can build your skills and experience to get ready for the world of work. Employability skills are built into the curriculum of all our degree programmes, and you can benefit from mentoring schemes and careers planning workshops and resources.

Birmingham is the third most targeted university by top employers (Graduate Market High Fliers report 2022-23), and as a student here, you can take part in collaborative projects with top regional employers.

When industry is calling, you'll find new connections in this city of young, creative entrepreneurs. It's just one of the reasons why so many of our graduates choose to stay in the region and build their career in Birmingham after graduation.



Support for your career development:
birmingham.ac.uk/employability

Careers Network

Our team of careers experts support you to explore your options, find work experience, and develop your skills throughout your studies and beyond.

- The Birmingham Award is an established employability programme, undertaken alongside your studies, and supports you to develop and recognise skills you gain through extra-curricular activities, and how you can articulate this for future job applications.
- UoB Elevate is our incubator programme, solely for Birmingham students and graduate start-ups, and is ideal for those looking to start their own business.
- Extra-curricular programmes that harness your talents to shape the world around you include the Impact Challenge and Birmingham Project, bringing small teams of students together with employers to help solve real-world challenges.
- We provide support and bursaries for work experience and internships and deliver a yearly programme of careers fairs on campus so that you can engage directly with future employers and build your network. Online action-planning tools and self-enrolment career development courses.





Olamide

Founder of All Things Money (allthingsmoney.uk) and freelance writer

BSc Business Management with a Year in Industry, 2020

I created All Things Money to share financial tips and information as we are not taught much about the world of personal finance at school or university. My role involves creating regular personal finance content across all of our social media channels such as Instagram, Facebook, and Twitter, hosting regular personal finance talks, and being the host of my very own podcast!

For anyone looking to start their very own business, I would highly recommend taking that first step. I know exactly how daunting it can be, but without taking that first step, you never know where you may end up!



Read more of our graduate stories: birmingham.ac.uk/graduatestories



Your Guild of Students

The Guild of Students is the students' union at the University of Birmingham. We're a democratically-led organisation, run by students, for students.

We are your voice, only louder.

Representing you

Our elected student officers represent all students across the University. Led by the President, the team cover activities and employability, education, international, sports, welfare and community matters.

From shaping your course and how the University is run, to campaigning on local and national issues, we're here to help you change things. Whether it's shaping food offers, informing timetables or influencing major investment decisions, we make sure your voice is heard.

Entertaining you

The Guild runs an annual programme of events and activities and is home to food outlets, a nightclub and three bars. Every penny of surplus is put back into activities and services for students, and into helping you feel part of our student community.

Guiding you

With over 300 student societies, there are lots of opportunities to meet people and have fun. We help you develop skills alongside your studies, are your voice on the issues that matter most to you and provide a supportive environment that enables you to succeed.

Supporting you

Through our free, confidential and impartial advice and support, we can guide you through academic, housing, wellbeing, financial and international issues, making sure you're aware of the help and services available.



Discover your Students' Union:
guildofstudents.com

How to apply

2024

June, October and November

Experience all our campus has to offer at an open day.

birmingham.ac.uk/ugopendays



For full details on how to apply, visit: birmingham.ac.uk/howtoapply

September

UCAS opens for applications for 2025 entry. UK schools and colleges will guide you through the online application process and submit the final application on your behalf.

15 October

UCAS deadline for applications to Medicine (A100), Dentistry (A200) and applicants applying to Oxford or Cambridge for 2025 entry.

2025

29 January

UCAS deadline for applications from all other UK students for 2025 entry. Most applications will receive a decision within 15 working days (longer for interviewing courses). Keep up to date with the progress of your application on UCAS Hub.

We welcome applications from students of all ages*, nationalities and backgrounds to study with us. Your application is considered through your personal statement, references, and your predicted and obtained grades.

All applications to our undergraduate programmes must be made through the Universities and Colleges Admissions Service (UCAS), online at www.ucas.com

* Applicants must normally be at least 17 years old by 1st October 2025, or 18 years old for courses with clinical placements.

December – April

If you are made an offer, we'll invite you to attend an Offer-Holder Visit Day on campus. Find out more about life as a Birmingham student, meet academic staff and students, and tour facilities. Some applicants may be invited to interview before offers are made.

May/June

Make your final decision about your Firm and Insurance choices via UCAS. If you firmly accept your offer at Birmingham by 30 June (UK/Ireland students) or 31 July (international students), we guarantee you a room in student accommodation.

30 June

Last date for receipt of applications. Applications received by UCAS after 30 June will go into Clearing.

July/August

A-level, BTEC and International Baccalaureate results are received by UCAS and sent directly to universities. You'll need to submit any other results you receive. We will automatically accept you if you meet the terms of your offer. Clearing opens in July for those not already holding a place.



Entry requirements

To be considered by Birmingham, you will need to meet the University's general entry requirements as well as the specific entry requirements of your chosen programme.

Specific entry requirements including any required subjects are listed on the course pages on our website and in the course directory on page 47-68.

General entry requirements

A minimum of three A-levels (or equivalent from other accepted qualifications).

GCSE grade C/4 in Mathematics and English. Please note that some programmes will have higher requirements than this minimum standard.

We accept all International GCSEs and A-levels as equivalent qualifications to standard GCSEs and A-levels.

We accept other level 3 qualifications such as the International Baccalaureate (IB), BTECs, T levels, the Welsh Baccalaureate and the Scottish Highers as well as a range of international qualifications.

Access to HE is considered by some programmes, usually on a case-by-case basis.

Applicants whose first language is not English will be required to provide evidence of their English proficiency.

For some programmes in medical and health sciences or where there is contact with vulnerable adults or children, a full Disclosure and Barring Service (DBS) check is required. You may also be required to sign a Code of Professional Conduct and meet Fitness to Practise requirements. Some programmes may also require certain immunisations and a health declaration.

We also welcome applications from people who have been out of education for some time and who may not meet the standard programme entry requirements. We encourage such applicants to contact the relevant admissions tutor in the first instance to discuss the suitability of your qualifications and experience.

Your Birmingham Offer

The type of offer you receive from Birmingham is personal to you depending on a range of factors, including your GCSE results, the subjects you're studying and other qualifications, your predicted grades, your personal statement, your reference and your personal circumstances.

Contextual offers

Our contextual offer scheme recognises the potential of students whose personal circumstances may have restricted achievement at school or college. Eligible applicants will receive an offer that is one grade lower than the typical offer. You may be eligible if you have spent time in local authority care (and you have documented this on your UCAS form) or if you've received Free School Meals in the last six years.

Pathways to Birmingham

If you qualify for, and successfully complete, one of our Year 12 or 13 Pathways programmes, you will be eligible to receive an alternative entry offer. This is normally two A-level grades (or equivalent) below the standard offer.



See our code of practice for details of how we assess applications:
birmingham.ac.uk/admissionstudents

Elite Dual Career Athlete Pathway (EDCAP)

The Elite Dual Career Athlete Pathway (EDCAP) provides sector-leading dual career support and is tailored to the individual needs of our highest performing student-athletes at the University. Eligible applicants will be made an offer for their programme which will be one grade lower than the standard offer.

Extended Project Qualification (EPQ)

Applicants who offer the EPQ and meet our offer criteria will be made the standard offer for their programme of choice, and an alternative offer which will be one grade lower plus a grade A in the EPQ (with the exception of our Medicine (A100) and Dentistry (A200) programmes).



For more information about Your Birmingham Offer visit:
birmingham.ac.uk/ybo



Financial support

Supporting you so you can relax, focus on your studies and make the most of your time at Birmingham.

For UK students beginning their studies in September 2025, we intend to charge the maximum approved tuition fee per year (previously £9,250 for 2023-24) for our full-time undergraduate courses, subject to Office for Students' approval.

Loans from the Government are available for all eligible full-time UK students to cover tuition fees and assist with living expenses. The amount that you can borrow to help with your living costs will be determined by your household income and where you choose to study.

Applying for financial support

You should apply at [gov.uk/studentfinance](https://www.gov.uk/studentfinance) as soon as you have applied for your course. You don't have to wait until you've received an offer of a place to study before you apply.

Managing your finances

Money can often be a worry for students applying to university but there are lots of things you can do to keep your costs down.

Part-time work

A part-time job can supplement your income and help you gain valuable work experience. Worklink, based in University Centre, can help you find work that fits around your studies.

Help and support

You can access financial advice throughout your studies, including funding workshops to help you manage your money and tailored advice if you run into financial difficulties.

Budgeting

Students in Birmingham enjoy lower living costs than many other cities, though this of course will depend on your lifestyle! One of the most important things that you'll need to learn as a student is how to manage your money.

Knowing that your finances are under control means that you can relax, concentrate on your studies and fully enjoy your time here at Birmingham. Our students have access to a wealth of handy resources and useful tips to help you budget effectively.



Scholarships

The Chamberlain Award

A means-tested bursary that supports students from across the UK who are under-represented at the University.

Music scholarships

Offering approximately 17 hours of musical tuition per year for three years (total equivalent cash value of £3,000), these scholarships are open to prospective students who are performing at a Grade 8 standard in an instrument or vocals and have an offer of a place on a full-time undergraduate programme (other than a programme offered by the Department of Music) at the University.

Sport scholarships

University of Birmingham Sport & Fitness offers scholarships each year to international-level performers from any academic department and of any nationality. Scholarship support consists of facility membership; strength and conditioning work; sports science and medicine services (including physiotherapy); lifestyle workshops; and help with sports-specific expenditure.

Subject scholarships

Depending on the subject you have chosen to study, there may be additional scholarships available to you. The eligibility criteria can vary depending on the School, but students are usually judged on their academic performance and/or financial need, with scholarships offered in addition to the Chamberlain Award.

Scholarship information is based on 2024 entry. For the latest information and to find out if you are eligible, please check the undergraduate funding database: [birmingham.ac.uk/ugfund](https://www.birmingham.ac.uk/ugfund)



To find out more about fees and funding, including international fees, visit: [birmingham.ac.uk/moneyadvice](https://www.birmingham.ac.uk/moneyadvice)

What can I study with...?

Choosing a university is a big decision and choosing the right course can sometimes be overwhelming.

Just because you studied a subject at A-level, it doesn't mean you have to study it at degree level. To give you some inspiration, have a look at just a few of the alternative courses you can study at Birmingham with some of your favourite subjects.



I'm studying History Social Anthropology and African Studies History of Art Ancient and Medieval History	I'm studying English Drama and Creative Writing Digital Media and Communications Politics	I'm studying Languages English Language and Linguistics International Relations Modern Languages with Business Management	I'm studying Religious Studies Politics, Religion and Philosophy Social Policy Criminology
I'm studying Maths Physics and Medical Physics Aerospace Engineering Money, Banking and Finance	I'm studying Geography International Law and Globalisation International Development Environmental Science	I'm studying Physics Civil Engineering Materials Science and Engineering Physics with Data Science	I'm studying Physical Education Education Physiotherapy Sport, Physical Education and Coaching Science
I'm studying Biology Biomedical Science Nursing Dental Hygiene and Therapy	I'm studying Chemistry Chemical Engineering Medicine and Surgery Pharmacy	I'm studying Business Law with Business Digital Media and Communications Accounting and Finance	I'm studying Psychology Psychology and Religion Sociology and Criminology Psychology in Education

Programmes to suit you

As well as single honours programmes, you can choose from a range of joint honours programmes where you can combine two subjects and study across different disciplines.

Similarly, Liberal Arts and Sciences offers you the chance to build a personalised programme of study based on your interests across the arts and sciences. Some programmes do not require you to have studied specific subjects in your previous studies, so make sure you check out the full entry requirements online before you apply.



To find your perfect course, visit:
[birmingham.ac.uk/ugcourses](https://www.birmingham.ac.uk/ugcourses)

Course	UCAS code	Course length (years)	Maximum entry requirements		Study abroad	Year in industry	Additional information
			A-level	IB higher level			
Accounting and Finance BSc	N400	3	AAA	6, 6, 6	●	✓	GCSE Mathematics grade 6
Aerospace Engineering BEng	H400	3	AAB	6, 6, 5	■	✓	A-level Mathematics and either Physics or Chemistry
Aerospace Engineering MEng	H402	4	AAA	6, 6, 6	■	✓	A-level Mathematics and either Physics or Chemistry
Aerospace Engineering (Engineering Foundation Year) BEng/MEng	HFJ0	4/5	BBB	5, 5, 5	●	✓	GCSE Mathematics minimum grade 6. A-level Mathematics is not considered.
Ancient and Medieval History BA	V116	3	ABB	6, 5, 5	●	✓	
Ancient History BA	V110	3	ABB	6, 5, 5	●	✓	
Ancient History and Archaeology BA	VVC4	3	ABB	6, 5, 5	●	✓	
Applied Golf Management Studies BSc	N290	3	ABB	6, 5, 5	●	✓	GCSE Mathematics, English and a science at a minimum of grade 4. For more details and full academic and non-academic requirements, please see course finder.
Artificial Intelligence and Computer Science BSc	GG47	3	A*AA	7, 6, 6	■		A-level Mathematics grade A required.
Artificial Intelligence and Computer Science with a Year in Industry BSc	GG74	4	A*AA	7, 6, 6	■	✓	A-level Mathematics grade A required.
Arts and Sciences BASc (subject to approval)	TBC	4	AAB	6, 6, 5	●	✓	
Biochemistry BSc	C700	3	AAB	6, 6, 5	■		Minimum of five GCSEs to include Mathematics, English and double award science at grade 4. A-level Chemistry and a second science*.
Biochemistry MSci	C703	4	AAA	6, 6, 6	■		Minimum of five GCSEs to include Mathematics, English and double award science at grade 4. A-level Chemistry and a second science*.
Biochemistry with an International Year BSc	C007	4	AAA	6, 6, 6	■	✓	Minimum of five GCSEs to include Mathematics, English and double award science at grade 4. A-level Chemistry and a second science*.

Biochemistry with Professional Placement MSci	C702	4	AAA	6, 6, 6	■	✓	Minimum of five GCSEs to include Mathematics, English and double award science at grade 4. A-level Chemistry and a second science*.
Biochemistry with Study in Continental Europe BSc	C701	4	AAB	6, 6, 5	■	✓	Minimum of five GCSEs to include Mathematics, English and double award science at grade 4. and grade 6 in a relevant foreign language (French, German or Spanish). A-level Chemistry and a second science*.
Biological Sciences BSc	C100	3	AAB	6, 6, 5	■	✓	Minimum of five GCSEs to include Mathematics, English and double award science at grade 4. A-level Biology/Human Biology and a second science*.
Biological Sciences MSci	C105	4	AAA	6, 6, 6	■		Minimum of five GCSEs to include Mathematics, English and double award science at grade 4. A-level Biology/Human Biology and a second science*.
Biological Sciences with an International Year BSc	C001	4	AAA	6, 6, 6	■	✓	Minimum of five GCSEs to include Mathematics, English and double award science at grade 4. A-level Biology/Human Biology and a second science*.
Biological Sciences with Professional Placement MSci	C102	4	AAA	6, 6, 6	■	✓	Minimum of five GCSEs to include Mathematics, English and double award science at grade 4. A-level Biology/Human Biology and a second science*.
Biological Sciences with Study in Continental Europe BSc	C101	4	AAB	6, 6, 5	■	✓	Minimum of five GCSEs to include Mathematics, English and double award science at grade 4. and grade 6 in a relevant foreign language (French, German or Spanish). A-level Biology/Human Biology and a second science*.
Biomedical Science BSc	B900	3	AAB	6, 6, 5	■		GCSE grade 6 in Mathematics, and 6 in Biology and Chemistry (or double award science) if not offered at a higher level. Two science A-levels from Biology, Chemistry, Mathematics, or Physics.
Biomedical Science MSci	B902	4	AAB	6, 6, 5	■		GCSE grade 6 in Mathematics, and 6 in Biology and Chemistry (or double award science) if not offered at a higher level. Two science A-levels from Biology, Chemistry, Mathematics, or Physics.

● BTEC Extended Diploma considered (see course finder for details of acceptable subjects)

■ BTEC only considered when combined with other qualifications (see course finder for details)

* Not accepted

* See course finder for details of subjects considered to be a science

In relation to GCSE reforms, we can confirm our position in terms of equivalencies: A*=8, A=7, B=6, C=4.

For more details, visit: www.birmingham.ac.uk/newgcse

Course	UCAS code	Course length (years)	Maximum entry requirements			Study abroad	Year in Industry	Additional information
			A-level	IB higher level	BTEC			
Business Management (Year in Industry) BSc	N201	4	AAB	6, 6, 5	●	✓	GCSE Mathematics grade 5 and GCSE English grade 6.	
Business Management BSc	N200	3	AAB	6, 6, 5	●		GCSE Mathematics grade 5 and GCSE English grade 6.	
Business Management with Communications and Year in Industry BSc	N191	4	AAB	6, 6, 5	●	✓	GCSE Mathematics grade 5 and GCSE English grade 6.	
Business Management with Communications BSc	N190	3	AAB	6, 6, 5	●		GCSE Mathematics grade 5 and GCSE English grade 6.	
Business Management with Marketing and a Year in Industry BSc	N203	4	AAB	6, 6, 5	●	✓	GCSE Mathematics grade 5 and GCSE English grade 6.	
Business Management with Marketing BSc	N202	3	AAB	6, 6, 5	●	✓	GCSE Mathematics grade 5 and GCSE English grade 6.	
Certificate in English Law	-	1					Applications are made through the University's International Office.	
Chemical Engineering (International Study) MEng	H801	4	A*AA/AAAA	7, 6, 6	■	✓	A-level Mathematics and Chemistry OR Physics required.	
Chemical Engineering BEng	H800	3	AAA	6, 6, 6	■		A-level Mathematics and Chemistry OR Physics required.	
Chemical Engineering MEng	H810	4	A*AA/AAAA	7, 6, 6	■		A-level Mathematics and Chemistry OR Physics required.	
Chemical Engineering Foundation Year BEng/MEng	H892	4/5	BBB	5, 5, 5	●		GCSE Mathematics minimum grade 6. A-level Mathematics is not considered.	
Chemical Engineering with Industrial Study BEng	HV10	3+1	AAA	6, 6, 6	■	✓	A-level Mathematics and Chemistry OR Physics required.	
Chemical Engineering with Industrial Study MEng	H802	4+1	A*AA/AAAA	7, 6, 6	■	✓	A-level Mathematics and Chemistry OR Physics required.	
Chemical Engineering with International and Industrial Study MEng	HW10	4+1	A*AA/AAAA	7, 6, 6	■	✓	A-level Mathematics and Chemistry OR Physics required.	
Chemistry BSc	F100	3	AAA-AAB	6, 6, 6-6, 6, 5	■		GCSE Mathematics minimum grade 6. A-level Chemistry required.	
Chemistry MSci	F101	4	A*AA-AAA	7, 6, 6-6, 6, 6	■		GCSE Mathematics minimum grade 6. A-level Chemistry required.	
Chemistry with Medicinal Chemistry and Drug Discovery BSc	F1M3	3	AAA-AAB	6, 6, 6-6, 6, 5	■		GCSE Mathematics minimum grade 6. A-level Chemistry required.	
Chemistry with Medicinal Chemistry and Drug Discovery MSci	F1M4	4	A*AA-AAA	7, 6, 6-6, 6, 6	■		GCSE Mathematics minimum grade 6. A-level Chemistry required.	
Chemistry with a Modern Language BSc	F1R9	3	AAA-AAB	6, 6, 6-6, 6, 5	■		GCSE Mathematics minimum grade 6. A-level Chemistry required.	
Chemistry with a Modern Language MSci	F1R4	4	A*AA-AAA	7, 6, 6-6, 6, 6	■		GCSE Mathematics minimum grade 6. A-level Chemistry required.	
Chemistry with Business Management BSc	F1N1	3	AAA-AAB	6, 6, 6-6, 6, 5	■		GCSE Mathematics minimum grade 6. A-level Chemistry required.	
Chemistry with Business Management MSci	F1N2	4	A*AA-AAA	7, 6, 6-6, 6, 6	■		GCSE Mathematics minimum grade 6. A-level Chemistry required.	
Chemistry with Sustainability BSc	F107	3	AAA-AAB	6, 6, 6-6, 6, 5	■		GCSE Mathematics minimum grade 6. A-level Chemistry required.	
Chemistry with Sustainability MSci	F108	4	A*AA-AAA	7, 6, 6-6, 6, 6	■		GCSE Mathematics minimum grade 6. A-level Chemistry required.	
Chemistry with Foundation Year BSc/MSci	F103	4/5	BBB	5, 5, 5	●		GCSE Mathematics minimum grade 6. A-level Mathematics is not considered.	
Chemistry with a Year in Industry BSc	F109	4	AAA-AAB	6, 6, 6-6, 6, 5	■		GCSE Mathematics minimum grade 6. A-level Chemistry required.	
Chemistry with a Year in Industry MSci	F104	4	A*AA-AAA	7, 6, 6-6, 6, 6	■	✓	GCSE Mathematics minimum grade 6. A-level Chemistry required.	
Chemistry with Study Abroad MSci	F106	4	A*AA-AAA	7, 6, 6-6, 6, 6	■	✓	GCSE Mathematics minimum grade 6 and minimum grade 7 in a relevant language (if study abroad at a non-English speaking university). A-level Chemistry required.	
Civil Engineering (Engineering Foundation Year) BEng/MEng	HFJ0	4/5	BBB	5, 5, 5	●	✓	GCSE Mathematics minimum grade 6. A-level Mathematics is not considered.	
Civil Engineering BEng	H200	3	AAB	6, 6, 5	●	✓	A-level Mathematics required. For non-A-level qualifications, a maths test is likely to be offered as part of the application process.	
Civil Engineering MEng	H201	4	AAA	6, 6, 6	●	✓	A-level Mathematics required. For non-A-level qualifications, a maths test is likely to be offered as part of the application process.	

Course	UCAS code	Course length (years)	Maximum entry requirements			Study abroad	Year in industry	Additional information
			A-level	IB higher level	BTEC			
			level					
Civil Engineering with Industrial Experience MEng	H202	4	AAA	6, 6, 6	●	✓	A-level Mathematics required. For non-A-level qualifications, a maths test is likely to be offered as part of the application process.	
Civil Engineering with International Study MEng	H203	4	AAA	6, 6, 6	●	✓	A-level Mathematics required. For non-A-level qualifications, a maths test is likely to be offered as part of the application process.	
Civil Engineering with Industrial Year MEng	H204	5	AAA	6, 6, 6	●	✓	A-level Mathematics required. For non-A-level qualifications, a maths test is likely to be offered as part of the application process.	
Classical Literature and Civilisation BA	Q820	3	ABB	6, 5, 5	●	✓		
Classics BA	Q800	3	ABB	6, 5, 5	■	✓	GCSE (Grade 7) in Latin, Greek, or a Modern Language, or A-level Latin (Grade B) required. A-level in a Modern Language (Grade B) also accepted.	
Computer Science (Physical Sciences Foundation Year) BSc/ MSci	FG10	4/5	BBB	5, 5, 5	●		GCSE Mathematics minimum grade 6. A-level Mathematics is not considered.	
Computer Science BSc	G400	3	A*AA	7, 6, 6	■		A-level Mathematics grade A required.	
Computer Science MSci	I101	4	A*AA	7, 6, 6	■		A-level Mathematics grade A required.	
Computer Science with a Year in Industry BSc	G401	4	A*AA	7, 6, 6	■	✓	A-level Mathematics grade A required.	
Computer Science with a Year in Industry MSci	I103	5	A*AA	7, 6, 6	■	✓	A-level Mathematics grade A required.	
Computer Science with Digital Technology Partnership (PwC) BSc	G402	4	AAA	6, 6, 6	■	✓	A-level Mathematics grade A required.	
Computer Science with Study Abroad BSc	I10A	4	A*AA	7, 6, 6	■	✓	A-level Mathematics grade A required.	
Computer Science with Study Abroad MSci	I102	5	A*AA	7, 6, 6	■	✓	A-level Mathematics grade A required.	
Computer Science/Software Engineering MEng	GG46	4	A*AA	7, 6, 6	■		A-level Mathematics grade A required.	
Computer Science/Software Engineering with a Year in Industry MEng	GG6L	5	A*AA	7, 6, 6	■	✓	A-level Mathematics grade A required.	
Criminology BA	M901	3	ABB	6, 5, 5	●	✓		
Criminology with Year Abroad BA	M902	4	ABB	6, 5, 5	●	✓		
Cultural and Creative Industries BA (subject to approval)	TBC	3/4	ABB	6, 5, 5	●	✓	At least one arts and humanities A-level subject required. Please visit the course page for more information.	
Dental Hygiene and Therapy BSc	B750	3	BBB	5, 5, 5	●		Minimum of six GCSEs at grade 4 to include English, Mathematics and a Biological subject/dual award science. A-level Biology at grade B or above. Please visit the course page for further entry requirements.	
Dental Surgery BDS	A200	5	AAA	6, 6, 6	*		GCSE 8 in Biology and Chemistry and 7 in Mathematics and English Language or Literature. A-levels must include Chemistry and Biology. Please visit the course page for more information. You must also sit the UCAT.	
Digital Media and Communications BA	P390	3	AAB	6, 6, 5	■	✓	A-level in an essay-based subject from our preferred subject list. Please visit the course page for more information.	
Drama and Creative Writing BA	WW48	3	AAB	6, 6, 5	■	✓	To include A-level from our preferred subject list. Please visit the course page for more information.	
Drama and English Literature BA	WQ43	3	AAB	6, 6, 5	■	✓	A-level English Literature grade B. A-level English Language and Literature also accepted.	
Drama and Film BA	WW46	3	AAB	6, 6, 5	■	✓	To include A-level from our preferred subject list. Please visit the course page for more information.	
Drama and Theatre Arts BA	W440	3	ABB	6, 5, 5	●	✓		
Economics BSc	L100	3	A*AA-AAA	7, 6, 6-6, 6, 6	●	✓	GCSE Mathematics grade 7 (if Mathematics is not being taken at A-level). GCSE Mathematics grade 6 (if Mathematics is being taken at A-level).	
Economics and Politics BSc	LL12	3	AAA	6, 6, 6	●	✓	GCSE Mathematics grade 7 (if Mathematics is not being taken at A-level). GCSE Mathematics grade 6 (if Mathematics is being taken at A-level).	
Economics with German BSc	L1R2	4	A*AA-AAA	7, 6, 6-6, 6, 6	■	✓	A-level German grade A. GCSE Mathematics grade 7 (if Mathematics is not being taken at A-level). GCSE Mathematics grade 6 (if Mathematics is being taken at A-level).	
Economics with Spanish BSc	L1R4	4	A*AA-AAA	7, 6, 6-6, 6, 6	■	✓	A-level Spanish grade A. GCSE Mathematics grade 7 (if Mathematics is not being taken at A-level). GCSE Mathematics grade 6 (if Mathematics is being taken at A-level).	
Education and Sociology BA	XL33	3	ABB	6, 5, 5	●	✓	For students wishing to pursue a career in Primary or Early Years teaching, it is essential to hold a GCSE Science at grade 4.	

Course	UCAS code	Course length (years)	Maximum entry requirements			Study abroad	Year in industry	Additional information
			A-level	IB higher level	BTEC			
Education BA	LX33	3	ABB	6, 5, 5	●	✓	For students wishing to pursue a career in Primary or Early Years teaching, it is essential to hold a GCSE Science grade 4.	
Electronic and Electrical Engineering BEng	H600	3	AAB	6, 6, 5	●	✓	A-level Mathematics required. For non-A-level qualifications, a maths test is likely to be offered as part of the application process.	
Electronic and Electrical Engineering MEng	H605	4	AAA	6, 6, 6	●	✓	A-level Mathematics required. For non-A-level qualifications, a maths test is likely to be offered as part of the application process.	
Electronic and Electrical Engineering with Industrial Year BEng	H606	4	AAB	6, 6, 5	●	✓	A-level Mathematics required. For non-A-level qualifications, a maths test is likely to be offered as part of the application process.	
Electronic and Electrical Engineering with Industrial Year MEng	H607	5	AAA	6, 6, 6	●	✓	A-level Mathematics required. For non-A-level qualifications, a maths test is likely to be offered as part of the application process.	
Electronic and Electrical Engineering (Engineering Foundation Year) BEng/MEng	HFJ0	4/5	BBB	5, 5, 5	●	✓	GCSE Mathematics minimum grade 6. A-level Mathematics is not considered.	
Engineering BEng	H236	3	AAB	6, 6, 5	●		A-level Mathematics required. For non-A-level qualifications, a maths test is likely to be offered as part of the application process. Opportunity to specify discipline from year 2 onwards.	
Engineering MEng	H632	4	AAA	6, 6, 6	●		A-level Mathematics required. For non-A-level qualifications, a maths test is likely to be offered as part of the application process. Opportunity to specify discipline from year 2 onwards.	
Engineering (Engineering Foundation Year)	HFJ0	4/5	BBB	5, 5, 5	●		GCSE Mathematics grade 6. A-level Mathematics not considered.	
English Language and Linguistics BA	Q310	3	AAB-ABB	6, 6, 5-6, 5, 5	■	✓	Applicants applying with English Language, English Literature, English Language and Literature, or a Modern Foreign Language are eligible for an offer of ABB. Applicants without these A-level subjects are welcome to apply and will be considered for an offer of AAB.	
English Language and Literature BA	Q30A	3	AAB	6, 6, 5	■	✓	A-level English Literature grade B. A-level English Language and Literature also accepted.	
English Literature BA	Q300	3	AAB	6, 6, 5	■	✓	A-level English Literature grade B. A-level English Language and Literature also accepted.	
English Literature and Creative Writing BA	Q3W8	3	AAB	6, 6, 5	■	✓	A-level English Literature grade B. A-level English Language and Literature also accepted.	
English Literature and Film BA	QW36	3	AAB	6, 6, 5	■	✓	A-level English Literature grade B. A-level English Language and Literature also accepted.	
English Literature and Digital Media and Communications BA	PO30	3	AAB	6, 6, 5	■	✓	A-level English Literature grade B. A-level English Language and Literature also accepted.	
English Literature with Shakespeare BA	Q3W4	3	AAB	6, 6, 5	■	✓	A-level English Literature grade B. A-level English Language and Literature also accepted.	
Environmental and Engineering Geoscience BSc	F910	3	ABB	6, 5, 5	●		At least one science* A-level subject.	
Environmental Science BSc	F900	3	ABB	6, 5, 5	●		At least one science* A-level subject.	
Environmental Science MSci	F750	4	AAB	6, 6, 5	■		At least one science* A-level subject.	
Environmental Science with a Professional Placement Abroad (Australasia) BSc	F850	4	AAB	6, 6, 5	■	✓	At least one science* A-level subject.	
Environmental Science with Year Abroad BSc	F751	4	ABB	6, 5, 5	●	✓	At least one science* A-level subject.	
Film and Creative Writing BA	PW38	3	AAB	6, 6, 5	■	✓	To include A-level from our preferred subject list. Please visit the course page for more information.	
French BA	R120	4	ABB	6, 5, 5	■	✓	A-level grade B required in French. It is possible to study two beginner languages without taking an advanced language, as long as one of the beginner languages is French or Spanish.	
Geography and Urban and Regional Planning BSc	LK74	3	ABB	6, 5, 5	■			
Geography BA	L700	3	AAB	6, 6, 5	●			
Geography BSc	F800	3	AAB	6, 6, 5	●			
Geography MSci	F80A	4	AAA	6, 6, 6	x			
Geography and Urban and Regional Planning with Year Abroad BSc	LK75	4	ABB	6, 5, 5	■	✓		

Course	UCAS code	Course length (years)	Maximum entry requirements			Study abroad	Year in industry	Additional information
			A-level	IB higher level	BTEC			
Geography with Year Abroad BA	L701	4	AAB	6, 6, 5	●	✓		
Geography with Year Abroad BSc	F801	4	AAB	6, 6, 5	●	✓		
Geography with an International Year MSci	L70A	4	AAA	6, 6, 6	×	✓		
Geology and Physical Geography BSc	FF68	3	ABB	6, 5, 5	●		At least one science* A-level subject.	
Geology and Physical Geography MSci	9F78	4	AAB	6, 6, 5	●		At least one science* A-level subject.	
Geology and Physical Geography with an International Year MSci	FF69	4	AAA	6, 6, 6	●	✓	At least one science* A-level subject.	
Geology BSc	F600	3	ABB	6, 5, 5	●		At least one science* A-level subject.	
Geology MSci	7F83	4	AAB	6, 6, 5	●		At least one science* A-level subject.	
Geology with an International Year MSci	F601	4	AAA	6, 6, 6	●	✓	At least one science* A-level subject.	
German BA	R220	4	ABB	6, 5, 5	■	✓	A-level grade B required in German. It is possible to study two beginner languages without taking an advanced language, as long as one of the beginner languages is French or Spanish.	
Global Environmental Change and Sustainability BSc	F901	3	AAB	6, 6, 5	●			
Global Environmental Change and Sustainability with Year Abroad BSc	F950	3	AAB	6, 6, 5	●			
Global Environmental Change and Sustainability MSci	F951	4	AAA	6, 6, 6	●			
History BA	V100	3	AAB	6, 6, 5	■	✓	A-level History, Early Modern History, Medieval History or Ancient History at grade B required. If not studying A-level History, GCSE History grade 7 plus one humanities A-level required. Please visit the course page for more information.	
History of Art BA	V350	3	ABB	6, 5, 5	●	✓		
Human Neuroscience BSc	B140	3	AAA	6, 6, 6	■		A-level Biology/Human Biology	
Human Sciences BSc	BCL0	3	AAB	6, 6, 5	■		Minimum of five GCSEs to include Mathematics, English and double award science at grade 4. A-levels to include two science* subjects.	
Human Sciences MSci	BCL1	4	AAA	6, 6, 6	■		Minimum of five GCSEs to include Mathematics, English and double award science at grade 4. A-levels to include two science* subjects.	
International Business BSc	NI20	4	AAB	6, 6, 5	●	✓	GCSE Mathematics grade 5/B and GCSE English grade 6.	
International Business with Communications BSc	NP19	4	AAB	6, 6, 5	●	✓	GCSE Mathematics grade 5/B and GCSE English grade 6.	
International Business with Language BSc	NI19	4	AAB	6, 6, 5	■	✓	A-level grade B in chosen language for Higher routes. GCSE grade 6 in foreign language for Beginners route. GCSE Mathematics 5/B and GCSE English grade 6.	
International Development and Politics BA	L9L2	3	AAB	6, 6, 5	●			
International Development and Politics with Year Abroad BA	L92A	4	AAB	6, 6, 5	●	✓		
International Law and Globalisation LLB	M240	3	AAA	6, 6, 6	●	✓		
International Relations BA	L250	3	AAB	6, 6, 5	●			
International Relations and Development BA	LL29	3	AAB	6, 6, 5	●			
International Relations and Development with Year Abroad BA	LL2A	4	AAB	6, 6, 5	●	✓		
International Relations with Economics BA	LL21	3	AAB	6, 6, 5	●		GCSE Mathematics grade 7.	
International Relations with Economics with Year Abroad BA	LL2B	4	AAB	6, 6, 5	●	✓	GCSE Mathematics grade 7.	
International Relations with French BA	L2R1	4	AAB	6, 6, 5	●	✓	A-level in chosen language. A-level grade B in French.	
International Relations with German BA	L2R2	4	AAB	6, 6, 5	●	✓	A-level in chosen language. A-level grade B in German.	

Course	UCAS code	Course length (years)	Maximum entry requirements			Study abroad	Year in industry	Additional information
			A-level	IB higher level	BTEC			
International Relations with Spanish BA	L2R4	4	AAB	6, 6, 5	●	✓	A-level in chosen language. A-level grade B in Spanish.	
International Relations with Year Abroad BA	L25A	4	AAB	6, 6, 5	●	✓		
Italian BA	R310	4	ABB	6, 5, 5	■	✓	A-level grade B required in Italian. It is possible to study two beginner languages without taking an advanced language, as long as one of the beginner languages is French or Spanish.	
Law for Graduates LLB	M990	2			x		Upper Second-Class Honours degree or equivalent.	
Law LLB	M100	3	AAA	6, 6, 6	●	✓		
Law with Business Studies LLB	M1N1	3	AAA	6, 6, 6	●	✓	GCSE Mathematics at grade 5/B if not offered at A or AS level.	
Law with Criminology LLB	M2L6	3	AAA	6, 6, 6	●	✓		
Law with French Law LLB	MR11	4	AAA	6, 6, 6	■	✓	A-level French grade A.	
Law with German Law LLB	MR12	4	AAA	6, 6, 6	■	✓	A-level German grade A.	
Liberal Arts BA (subject to approval)	TBC	3/4	AAB	6, 6, 5	●	✓	Specific A-level subjects may be required depending on your chosen subject area. Please visit the course page for more information.	
Materials Science and Engineering BEng	J5F2	3	AAB	6, 6, 5	■	✓	A-level Mathematics and one of Physics, Chemistry or Design and Technology.	
Materials Science and Engineering MEng	F2H1	4	AAA	6, 6, 6	■	✓	A-level Mathematics and one of Physics, Chemistry or Design and Technology.	
Materials Science and Engineering with Industrial Experience MEng	J200	4+1	AAA	6, 6, 6	■	✓	A-level Mathematics and one of Physics, Chemistry or Design and Technology.	
Materials Science and Engineering (Engineering Foundation Year) BEng/MEng	HFJ0	4/5	BBB	5, 5, 5	●	✓	GCSE Mathematics minimum grade 6. A-level Mathematics is not considered.	
Mathematical Economics and Statistics BSc	LG13	3	AAA	6, 6, 6	■	✓	A-level Mathematics grade A.	

Mathematics (Physical Sciences Foundation Year) BSc/MSci	FG10	4/5	BBB	5, 5, 5	●		GCSE Mathematics minimum grade 6. A-level Mathematics is not considered.
Mathematics and Computer Science BSc	GG14	3	A*AA	7, 6, 6	■		A-level Mathematics or Further Mathematics grade A.
Mathematics and Computer Science MSci	GI11	4	A*AA	7, 6, 6	■		A-level Mathematics or Further Mathematics grade A.
Mathematics and Computer Science with Industrial Year BSc	GGD4	4	A*AA	7, 6, 6	■	✓	A-level Mathematics or Further Mathematics grade A.
Mathematics and Computer Science with Industrial Year MSci	GG41	5	A*AA	7, 6, 6	■	✓	A-level Mathematics or Further Mathematics grade A.
Mathematics BSc	G100	3	AAA	6, 6, 6	■		A-level Mathematics or Further Mathematics grade A.
Mathematics MSci	G103	4	A*AA	7, 6, 6	■		A-level Mathematics or Further Mathematics grade A.
Mathematics with Business Management BSc	G1N2	3	AAA	6, 6, 6	■		A-level Mathematics or Further Mathematics grade A.
Mathematics with Business Management MSci	G1NF	4	A*AA	7, 6, 6	■		A-level Mathematics or Further Mathematics grade A.
Mathematics with Study in Continental Europe BSc	G141	4	AAA	6, 6, 6	■	✓	GCSE minimum grade 7 or A-level grade C in a relevant language. A-level Mathematics or Further Mathematics.
Mathematics with an International Year BSc	G104	4	AAA	6, 6, 6	■	✓	A-level Mathematics or Further Mathematics grade A.
Mathematics with a Year in Industry BSc	G102	4	AAA	6, 6, 6	■	✓	A-level Mathematics or Further Mathematics grade A.
Mechanical Engineering (Automotive) BEng	H302	3	AAB	6, 6, 5	●	✓	A-level Mathematics required. For non-A-level qualifications, a maths test is likely to be offered as part of the application process.
Mechanical Engineering (Automotive) MEng	H330	4	AAA	6, 6, 6	●	✓	A-level Mathematics required. For non-A-level qualifications, a maths test is likely to be offered as part of the application process.
Mechanical Engineering (Engineering Foundation Year) BEng/MEng	HFJ0	4/5	BBB	5, 5, 5	●	✓	GCSE Mathematics minimum grade 6. A-level Mathematics is not considered.
Mechanical Engineering BEng	H300	3	AAB	6, 6, 5	●	✓	A-level Mathematics required. For non-A-level qualifications, a maths test is likely to be offered as part of the application process.

Course	UCAS code	Course length (years)	Maximum entry requirements			Study abroad	Year in industry	Additional information
			A-level	IB higher level	BTEC			
Mechanical Engineering MEng	H301	4	AAA	6, 6, 6	●	✓	A-level Mathematics required. For non-A-level qualifications, a maths test is likely to be offered as part of the application process.	
Mechanical Engineering with Industrial Year BEng	H304	4	AAB	6, 6, 5	●	✓	A-level Mathematics required. For non-A-level qualifications, a maths test is likely to be offered as part of the application process.	
Mechanical Engineering with Industrial Year MEng	H303	5	AAA	6, 6, 6	●	✓	A-level Mathematics required. For non-A-level qualifications, a maths test is likely to be offered as part of the application process.	
Mechanical Engineering with a Year Abroad MEng	H305	4	AAA	6, 6, 6	●	✓	A-level Mathematics required. For non-A-level qualifications, a maths test is likely to be offered as part of the application process.	
Mechatronic and Robotic Engineering BEng	H6H3	3	AAB	6, 6, 5	●	✓	A-level Mathematics required. For non-A-level qualifications, a maths test is likely to be offered as part of the application process.	
Mechatronic and Robotic Engineering MEng	HH63	4	AAA	6, 6, 6	●	✓	A-level Mathematics required. For non-A-level qualifications, a maths test is likely to be offered as part of the application process.	
Mechatronic and Robotic Engineering with Industrial Year BEng	H64i	4	AAB	6, 6, 5	●	✓	A-level Mathematics required. For non-A-level qualifications, a maths test is likely to be offered as part of the application process.	
Mechatronic and Robotic Engineering with Industrial Year MEng	H65i	5	AAA	6, 6, 6	●	✓	A-level Mathematics required. For non-A-level qualifications, a maths test is likely to be offered as part of the application process.	
Mechatronic and Robotic Engineering (Engineering Foundation Year) BEng/MEng	HFJ0	4/5	BBB	5, 5, 5	●	✓	GCSE Mathematics minimum grade 6. A-level Mathematics is not considered.	
Medical Biochemistry BSc	C720	3	AAB	6, 6, 5	■		A minimum of five GCSEs to include English, Mathematics and double award science at grade 4. A-level Chemistry and a second science*.	
Medicine and Surgery MBChB	A100	5	A*AA	7, 6, 6	×		A total of seven GCSEs must be offered including English Language, Mathematics, Biology and Chemistry (or dual award science) at grade 6 or higher. A-levels include Biology/Human Biology and Chemistry. We calculate application scores taking into account GCSE and UCAT results as well as contextual information. For detailed guidance, please visit the website.	
Modern Languages BA	R901	4	ABB	6, 5, 5	■	✓	A-level grade B is required for the advanced language you wish to study. It is also possible to study two beginner (including post-GCSE) languages without taking an advanced language, as long as one of your beginner languages is French or Spanish.	
Modern Languages with Business Management BA	R9N1	4	AAB	6, 6, 5	■	✓	A-level or equivalent in each modern language that you plan to take at Advanced level.	
Modern Languages with Translation Studies	RO99	4	ABB	6, 5, 5	■			
Money, Banking and Finance BSc	N300	3	A*AA-AAA	7, 6, 6-6, 6, 6	●	✓	GCSE Mathematics grade 7 (if Mathematics is not being taken at A-level). GCSE Mathematics grade 6 (if Mathematics is being taken at A-level).	
Music BMus	W302	3	AAB	6, 6, 5	■	✓	A-level Music grade A. BTEC applicants also require A-level Music grade A. ABRSM grade 7-8 theory is accepted as an alternative to A-level Music, provided three A-levels have been taken. Applicants with equivalent Trinity or LCM music theory qualifications will also be considered.	
Natural Sciences BSc/MSci (subject to approval)	TBC	3/4	A*AA-AAB	7, 6, 6 - 6, 6, 5	×	✓	A-level or equivalent in Mathematics required.	
Nursing – Adult BNurs	B703	3	BBB	5, 5, 5	●		A minimum of five GCSEs at grade 4 or above including English, Mathematics and a Science subject. Please visit the course finder page for further entry requirements.	
Nursing – Adult MNurs	B706	4	ABB	6, 5, 5	●		A minimum of five GCSEs at grade 4 or above including English, Mathematics and a Science subject. Please visit the course finder page for further entry requirements.	
Nursing – Adult and Mental Health (Dual Registration) MNurs	B708	4	ABB	6, 5, 5	●		A minimum of five GCSEs at grade 4 or above including English, Mathematics and a Science subject. Please visit the course finder page for further entry requirements.	
Nursing – Child and Mental Health (Dual Registration) MNurs	B709	4	ABB	6, 5, 5	●		A minimum of five GCSEs at grade 4 or above including English, Mathematics and a Science subject. Please visit the course finder page for further entry requirements.	

Course	UCAS code	Course length (years)	Maximum entry requirements			Study abroad	Year in industry	Additional information
			A-level	IB higher level	BTEC			
Nursing – Child BNurs	B702	3	BBB	5, 5, 5	●		A minimum of five GCSEs at grade 4 or above including English, Mathematics and a Science subject. Please visit the course finder page for further entry requirements.	
Nursing – Child MNurs	B705	4	ABB	6, 5, 5	●		A minimum of five GCSEs at grade 4 or above including English, Mathematics and a Science subject. Please visit the course finder page for further entry requirements.	
Nursing – Mental Health BNurs	B704	3	BBB	5, 5, 5	●		A minimum of five GCSEs at grade 4 or above including English, Mathematics and a Science subject. Please visit the course finder page for further entry requirements.	
Nursing – Mental Health MNurs	B707	4	ABB	6, 5, 5	●		A minimum of five GCSEs at grade 4 or above including English, Mathematics and a Science subject. Please visit the course finder page for further entry requirements.	
Palaeontology and Geology BSc	FC69	3	ABB	6, 5, 5	●		At least one science* A-level subject.	
Palaeontology and Geology MSci	8C63	4	AAB	6, 6, 5	●		At least one science* A-level subject.	
Palaeontology and Geology with an International Year MSci	FC70	4	AAA	6, 6, 6	●	✓	At least one science* A-level subject.	
Pharmacy MPharm	B230	4	AAB	6, 6, 5	■		GCSE Mathematics at grade 6. A-level Chemistry and at least one further science from Biology, Mathematics or Physics.	
Philosophy BA	V500	3	AAB	6, 6, 5	●	✓		
Philosophy, Religion and Ethics BA	VV56	3	ABB	6, 5, 5	●	✓		
Physics (International Study) BSc	F301	4	A*AA-AAAA	7, 6, 6	■	✓	A-level Mathematics and A-level Physics grades A*A (or AA as part of a four A-level offer). GCSE minimum grade 6 in a relevant language to study abroad.	
Physics (International Study) MSci	F303	4	A*AA	7, 6, 6	■	✓	A-level Mathematics and A-level Physics grades A*A plus A-level grade B in a relevant language to study abroad.	
Physics (Physical Sciences Foundation Year) BSc/MSci	FG10	4/5	BBB	5, 5, 5	●		GCSE Mathematics minimum grade 6. A-level Mathematics is not considered.	
Physics and Astrophysics (International Study) BSc	FF3M	4	A*AA-AAAA	7, 6, 6	■	✓	A-level Mathematics and A-level Physics grades A*A (or AA as part of four A-level offer). GCSE minimum grade 6 in a relevant language to study abroad.	
Physics and Astrophysics BSc	FF35	3	A*AA-AAAA	7, 6, 6	■		A-level Mathematics and Physics, grades A*A (or AA as part of four A-level offer).	
Physics and Astrophysics MSci	FFH5	4	A*AA	7, 6, 6	■		A-level Mathematics and Physics, grades A*A.	
Physics BSc	F300	3	A*AA-AAAA	7, 6, 6	■		A-level Mathematics and Physics, grades A*A (or AA as part of four A-level offer).	
Physics MSci	F302	4	A*AA	7, 6, 6	■		A-level Mathematics and Physics, grades A*A.	
Physics with Data Science BSc	FG13	3	A*AA	7, 6, 6	■		A-level Mathematics A*, A-level Physics A.	
Physics with Data Science MSci	FG14	4	A*A*A	7, 7, 6	■		A-level Mathematics A*, A-level Physics A* or A-level Mathematics A*, Further Mathematics A*, Physics A.	
Physics with Medical Physics BSc	F350	3	A*AA-AAAA	7, 6, 6	■		A-level Mathematics and A-level Physics grades A*A (or AA as part of the four A-level offer).	
Physics with Medical Physics MSci	F351	4	A*AA	7, 6, 6	■		A-level Mathematics and Physics grades A*A.	
Physics with Particle Physics and Cosmology BSc	F372	3	A*AA-AAAA	7, 6, 6	■		A-level Mathematics and Physics, grades A*A (or AA as part of four A-level offer).	
Physics with Particle Physics and Cosmology MSci	F373	4	A*AA	7, 6, 6	■		A-level Mathematics and Physics, grades A*A.	
Physiotherapy MSci	B160	4	AAB	6, 6, 5	●		Minimum of seven GCSEs; Mathematics grade 6 or higher, English Language grade 6 or higher, Biology and Chemistry or dual award science 6 or higher. The remainder of the GCSEs should be at grade 5 or higher. A-level Biology/Human Biology or PE at grade A. Please visit the course finder page for details of non-academic conditions.	
Policy, Politics and Economics (PPE) BA	L990	3	AAB	6, 6, 5	●	✓	GCSE Mathematics grade 7.	
Policy, Politics and Economics (PPE) with Year Abroad BA	60L2	4	AAB	6, 6, 5	●	✓	GCSE Mathematics grade 7.	
Politics and International Relations BA	L256	3	AAB	6, 6, 5	●			
Politics and International Relations with Year Abroad BA	L257	4	AAB	6, 6, 5	●	✓		
Politics and Social Policy BA	LL42	3	AAB	6, 6, 5	●			
Politics and Social Policy with Year Abroad BA	LL24	4	AAB	6, 6, 5	●	✓		
Politics and Sociology BA	LL32	3	AAB	6, 6, 5	●			
Politics and Sociology with Year Abroad BA	LL23	4	AAB	6, 6, 5	●	✓		

Course	UCAS code	Course length (years)	Maximum entry requirements			Study abroad	Year in industry	Additional information
			A-level	IB higher level	BTEC			
Politics BA	L200	3	AAB	6, 6, 5	●			
Politics with Year Abroad BA	L20A	4	AAB	6, 6, 5	●	✓		
Politics, Religion and Philosophy BA	8L37	3	AAB	6, 6, 5	●	✓		
Psychology BSc	C800	3	AAA - AAB	7, 6, 6 - 6, 6, 6	■		AAB if one of the following subjects are being taken: Chemistry, Biology/Human Biology, Physics, Psychology, Mathematics/ Further Mathematics or Statistics. AAA if no science subjects are being taken.	
Psychology and Psychological Practice MSci	C801	4	A*AA	7, 6, 6	x		To include one Science from Chemistry/Biology/Human Biology/ Physics/Psychology/Mathematics/Further Mathematics/ Statistics.	
Psychology and Religion BA	CV86	3	AAB	6, 6, 5	●	✓		
Psychology in Education BSc	C8X3	3	ABB	6, 5, 5	●	✓	For students wishing to pursue a career in Primary or Early Years teaching, it is essential to hold a GCSE Science Grade 4.	
Psychology with Year Abroad BSc	C802	4	A*AA	7, 6, 6	■	✓	A*AA including one of the following subjects: Chemistry, Biology/Human Biology, Physics, Psychology, Mathematics/Further Mathematics or Statistics.	
Russian BA	R700	4	ABB	6, 5, 5	●	✓	A-level grade B required in Russian. It is possible to study two beginner languages without taking an advanced language, as long as one of the beginner languages is French or Spanish.	
Social Anthropology BA	L600	3	AAB	6, 6, 5	●	✓		
Social Policy and Criminology BA	L673	3	ABB	6, 5, 5	●	✓		
Social Policy and Criminology Year Abroad BA	L67A	4	ABB	6, 5, 5	●	✓		
Social Policy and Sociology BA	LL43	3	ABB	6, 5, 5	●	✓		
Social Policy BA	L400	3	ABB	6, 5, 5	●	✓		
Social Policy and Sociology Year Abroad BA	L34A	4	ABB	6, 5, 5	●	✓		
Social Policy with Year Abroad BA	L40A	4	ABB	6, 5, 5	●	✓		

Social Work BA	L501	3	ABB	6, 5, 5	●			GCSE Mathematics and English at a minimum of grade 4, or equivalent level 2 qualification.
Social Work with Year Abroad BA	L50A	4	ABB	6, 5, 5	●	✓		Not directly admissible via UCAS. Students apply at the end of their first year based on their performance.
Sociology BA	L300	3	ABB	6, 5, 5	●	✓		
Sociology with Year Abroad BA	L30A	4	ABB	6, 5, 5	●	✓		
Sociology and Criminology BA	LM39	3	ABB	6, 5, 5	●	✓		
Sociology and Criminology with Year Abroad BA	L39A	4	ABB	6, 5, 5	●	✓		
Spanish BA	R410	4	ABB	6, 5, 5	■	✓		A-level grade B required in Spanish. It is possible to study two beginner languages without taking an advanced language, as long as one of the beginner languages is French or Spanish.
Sport, Exercise and Health Sciences BSc	BC17	3	AAA-ABB	6, 6, 6-6, 5, 5	●			GCSE Mathematics, English and a science at a minimum of grade 4. A-level requirements dependent on the number of science subjects being offered - please see course finder.
Sport, Physical Education and Coaching Science BSc	C6L4	3	AAB-ABB	6, 6, 5-6, 5, 5	●			GCSE Mathematics, English and a science at a minimum of grade 4. A-level requirements dependent on the number of preferred subjects being offered - please see course finder.
Theology and Religion BA	V600	3	ABB	6, 5, 5	●	✓		
Theoretical Physics and Applied Mathematics BSc	FG31	3	A*AA	7, 6, 6	■			A-level Mathematics A*, A-level Physics A.
Theoretical Physics and Applied Mathematics MSci	F3DG	4	A*A*A	7, 7, 6	■			A-level Mathematics A*, A-level Physics A*; or A-level Mathematics A*, Further Mathematics A*, Physics A.
Theoretical Physics BSc	F342	3	A*AA	7, 6, 6	■			A-level Mathematics A*, A-level Physics A.
Theoretical Physics MSci	F343	4	A*A*A	7, 7, 6	■			A-level Mathematics A*, A-level Physics A*; or A-level Mathematics A*, Further Mathematics A*, Physics A.

● BTEC Extended Diploma considered (see course finder for details of acceptable subjects) ■ BTEC only considered when combined with other qualifications (see course finder for details)

* Not accepted

* See course finder for details of subjects considered to be a science

In relation to GCSE reforms, we can confirm our position in terms of equivalencies: A*=8, A=7, B=6, C=4.

For more details, visit: www.birmingham.ac.uk/newgcse

Joint Honours Programmes

You will need to meet the subject-specific requirements for both subjects within the degree programme to be considered for entry – please see course finder for details.

65

Course combination	UCAS code	Maximum entry requirements	
		A-level	IB higher level
Ancient History and Archaeology and History BA	VV14	ABB	6, 5, 5
Classical Literature and Civilisation and Philosophy BA	QV85	ABB	6, 5, 5
Economics and Politics BSc	LL12	AAA	6, 6, 6
Education and Sociology BA	XL33	ABB	6, 5, 5
English Language and Classical Literature and Civilisation BA	QQ38	ABB	6, 5, 5
English Language and History BA	QV31	AAB	6, 6, 5
English Language and Philosophy BA	QV35	AAB	6, 6, 5
English Literature and Classical Literature and Civilisation BA	QQ3V	ABB	6, 5, 5
English Literature and History BA	QV3C	AAB	6, 6, 5
English Literature and History of Art BA	QV3H	ABB	6, 5, 5
English Literature and Philosophy BA	QV3M	AAB	6, 6, 5
Geography and Urban and Regional Planning BSc	LK74	ABB	6, 5, 5
History and History of Art BA	VV13	ABB	6, 5, 5
History and Philosophy BA	VV15	AAB	6, 6, 5
History and Politics BA	LV21	AAB	6, 6, 5
History and Theology BA	VV16	ABB	6, 5, 5
International Development and Politics BA	L9L2	AAB	6, 6, 5
International Development and Politics with Year Abroad BA	L92A	AAB	6, 6, 5
International Relations and Development BA	LL29	AAB	6, 6, 5
International Relations and Development with Year Abroad BA	LL2A	AAB	6, 6, 5
Mathematics and Computer Science BSc	GG14	A*AA	7, 6, 6
Mathematics and Computer Science MSci	GH11	A*AA	7, 6, 6
Mathematics and Computer Science with Industrial Year BSc	GGD4	A*AA	7, 6, 6
Mathematics and Computer Science with Industrial Year MSci	GG41	A*AA	7, 6, 6
Mathematics and Music BA	GW13	AAB	6, 6, 5
Mathematics and Philosophy BA	GV15	AAB	6, 6, 5

66

Modern Languages and Linguistics BA	RQ93	AAB	6, 6, 5
Modern Languages and English Literature BA	7O6Q	AAB	6, 6, 5
Modern Languages and History BA	R9V1	AAB	6, 6, 5
Modern Languages and History of Art BA	5OV1	ABB	6, 5, 5
Modern Languages and Music BA	R752	AAB	6, 6, 5
Philosophy and Sociology BA	VL53	ABB	6, 5, 5
Politics and International Relations BA	L256	AAB	6, 6, 5
Politics and International Relations with Year Abroad BA	L257	AAB	6, 6, 5
Politics and Philosophy BA	VL52	AAB	6, 6, 5
Politics and Philosophy with Year Abroad BA	LV25	AAB	6, 6, 5
Politics and Social Policy BA	LL42	AAB	6, 6, 5
Politics and Social Policy with Year Abroad BA	LL24	AAB	6, 6, 5
Politics and Sociology BA	LL32	AAB	6, 6, 5
Politics and Sociology with Year Abroad BA	LL23	AAB	6, 6, 5
Social Anthropology and African Studies BA	LT65	BBB	5, 5, 5
Social Anthropology and Classical Literature and Civilisation BA	LO68	ABB	6, 5, 5
Social Anthropology and History BA	LV61	ABB	6, 5, 5
Social Anthropology and Politics BA	LL62	ABB	6, 5, 5
Social Anthropology and Archaeology BA	LV64	ABB	6, 5, 5
Social Policy and Criminology BA	L673	ABB	6, 5, 5
Social Policy and Criminology with Year Abroad BA	L67A	ABB	6, 5, 5
Social Policy and Sociology BA	LL43	ABB	5, 5, 5
Social Policy and Sociology with Year Abroad BA	L34A	ABB	5, 5, 5
Sociology and Criminology BA	LM39	ABB	6, 5, 5
Sociology and Criminology with Year Abroad BA	L39A	ABB	6, 5, 5
Theoretical Physics and Applied Mathematics BSc	FG31	A*AA	7, 6, 6
Theoretical Physics and Applied Mathematics MSci	F3DG	A*A*A	7, 7, 6

The Birmingham Offer Calculator

Our online Offer Calculator will tell you immediately if you are likely to receive an offer to study at Birmingham and what that offer may be.

If you're studying A-level, BTEC or IB, simply tell us your predicted and achieved grades and you'll get your result straightaway. You can also use this tool to find out about courses you may not have previously considered.



Find out now if you are likely to receive an offer to study at Birmingham: birmingham.ac.uk/offercalculator

Terms and conditions

Before you apply, please visit our website to view essential information for all applicants:

birmingham.ac.uk/applicantinformation

If the University makes you an offer, and you decide to accept it, a contract will be formed between you and the University. The website includes important terms, conditions and requirements that will apply to that contract, and on which the University will rely in its future relationship with you. It is essential that you **read them carefully**.

Information set out in the prospectus and on the University website is accurate at the date of publication (January 2024).

The second city, your second home

You'll find Birmingham in the heart of England, benefiting from both a major cosmopolitan city and the beautiful countryside just a stone's throw away.

The University of Birmingham has a train station on campus (aptly named 'University station'), which will take you into the heart of Birmingham (New Street) in seven minutes. From Birmingham New Street, you can reach all corners of the UK easily, as it's the busiest station outside London with links to major cities.

Birmingham is also surrounded by a network of motorways, and has an international airport just 10 minutes on the train from the city centre.

Train journey times to Birmingham:

Nottingham 1hr 20mins

Sheffield 1hr 20mins

Bristol 1hr 25mins

Manchester 1hr 40mins

London 1hr 40mins

Liverpool 1hr 50mins

Peterborough 1hr 50mins

Leeds 1hr 55mins

Cardiff 2hrs

York 2hrs 25mins

Exeter 2hrs 30mins

Newcastle 3hrs 25mins

Norwich 4hrs

Edinburgh 4hrs 40mins

**Please note, journey times are for guidance only and are based on average time taken for off-peak trains travelling between mainland UK city centre stations.*



Undergraduate open days

Friday 21 June 2024

Saturday 22 June 2024

Saturday 5 October 2024

Saturday 9 November 2024



Book your open day:
[birmingham.ac.uk/
ugopenday](https://birmingham.ac.uk/ugopenday)

Designed and printed by



**UNIVERSITY OF
BIRMINGHAM**

Creative
Media

Edgbaston, Birmingham,
B15 2TT, United Kingdom
birmingham.ac.uk