



UNIVERSITY OF
BIRMINGHAM



BIRMINGHAM
GLOBAL

Professor Sir David Eastwood
Vice-Chancellor and Principal

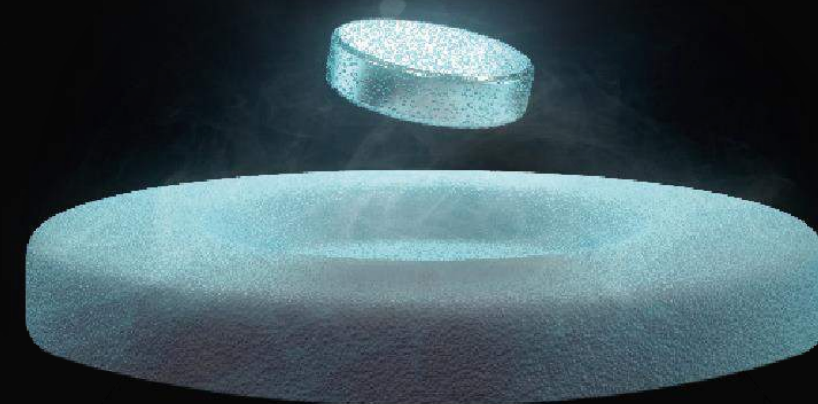
BIRMINGHAM HEROES

NOBEL PRIZE WINNERS



UNIVERSITY OF
BIRMINGHAM

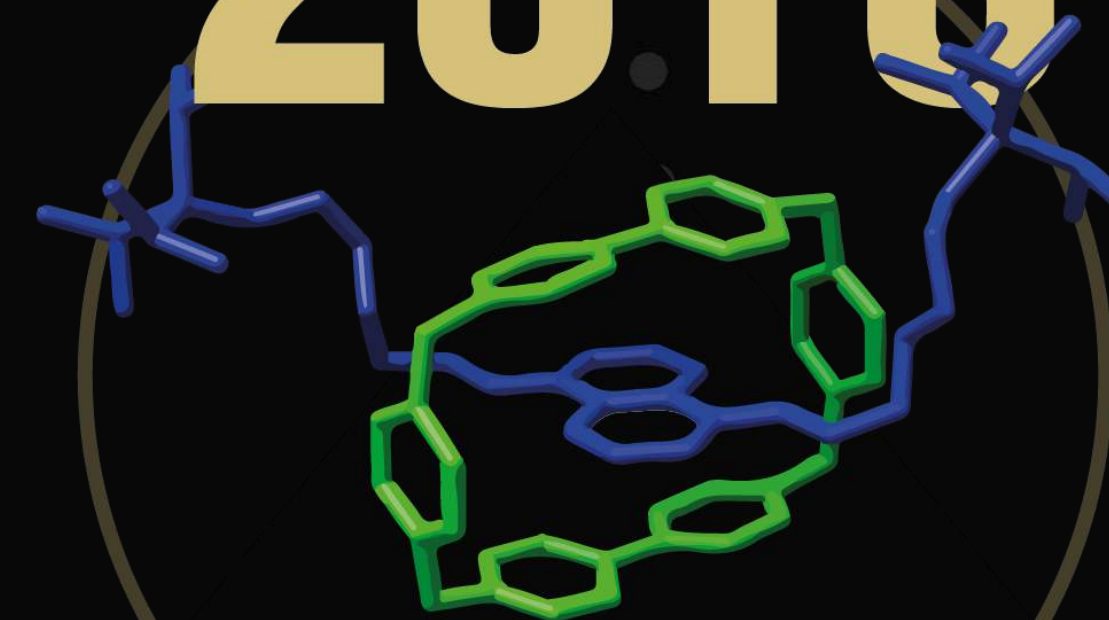
2016



PHYSICS PRIZE
DEEPENING OUR
UNDERSTANDING OF
EXOTIC MATTER

Professor David J. Thouless
Professor J. Michael Kosterlitz

2016



CHEMISTRY PRIZE
PIONEERING MOLECULAR
MACHINES

Professor Sir J. Fraser Stoddart

TRANSFORMATIVE CAPITAL DEVELOPMENTS

A stunning new Main Library

£60m development opened September 2016

Outstanding facilities which embrace new technology

40% increase in student usage over the first term



UNIVERSITY OF
BIRMINGHAM



TRANSFORMATIVE CAPITAL DEVELOPMENTS

Dental Hospital and School of Dentistry

Opened March 2016

Lapworth Museum of Geology

Opened June 2016



UNIVERSITY OF
BIRMINGHAM

Alan Walters Building for taught postgraduate
students in the Business School

Opened September 2016

Acquisition of 301 Broad Street and
Birmingham Life Sciences Park



QUALITY AND INNOVATION IN EDUCATION

An outstanding Higher Education Review

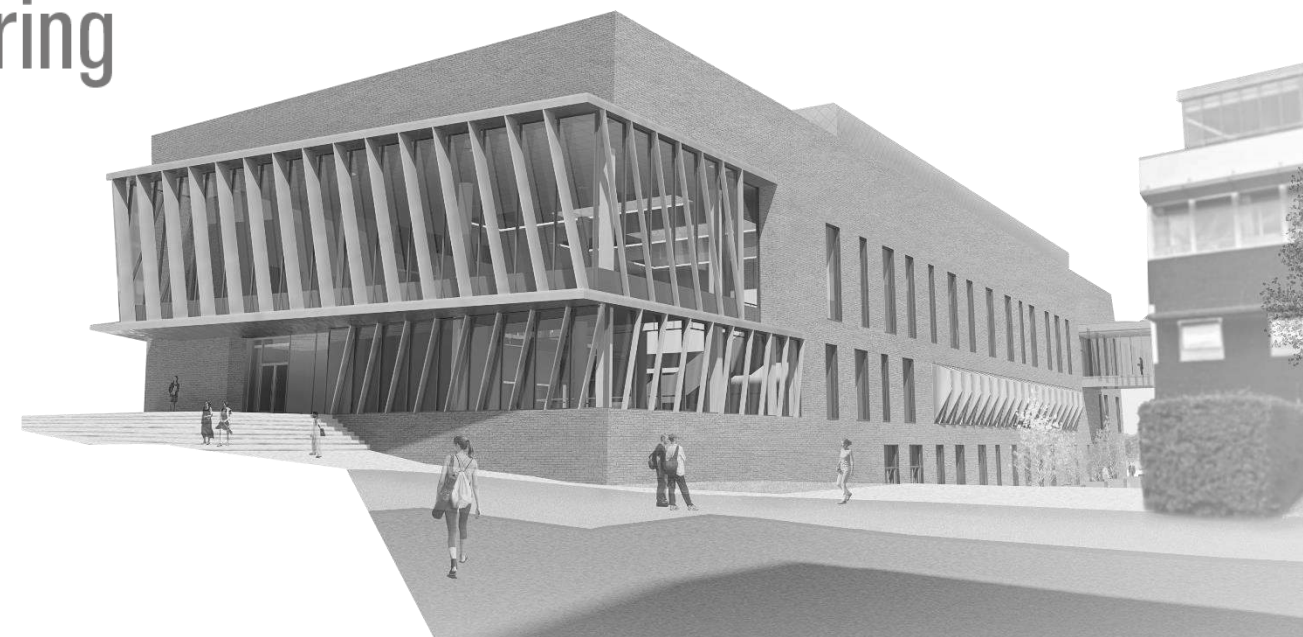
The **most positive outcome** of all institutions in the UK to date

Highest rating possible in areas such as the quality of learning opportunities for our students

Collaborative Teaching Laboratory

Brings together practical teaching across science and engineering

Planned opening
autumn 2018



School of Engineering

Opens up future opportunities for new programmes and research opportunities



UNIVERSITY OF
BIRMINGHAM

DELIVERING **WORLD-CHANGING** RESEARCH

£656M LIVE RESEARCH AWARDS
(2,645 PROJECTS)

High Temperature Research Centre

£60m collaboration with Rolls-Royce



UNIVERSITY OF
BIRMINGHAM

World Shakespeare Congress

800 Shakespeare scholars from 48 countries,
along with distinguished writers and performers

Birmingham Institute of Forest Research

Step-change in understanding **how forests will respond** to future increases in atmospheric CO2

UK Quantum Technology Hub

Birmingham has triggered more than **£10m of industry investment** in quantum technology

Exploiting Birmingham's strength in life sciences

Major awards for clinical trials, and research in cancer, inflammatory diseases and rheumatology

INTERNATIONAL PARTNERSHIPS

University of Melbourne

Research, education, and cultural engagement

£2m joint Priestly PhD Fellowships in engineering



UNIVERSITY OF
BIRMINGHAM

University of Illinois at Urbana-Champaign

Joint research fellowships

Over 55 cross-faculty links



INTERNATIONAL PARTNERSHIPS

China

Joint energy storage research lab
with State Grid Corporation of China

Beijing Jiaotong University – partnership signed
for a high-speed railway research laboratory



UNIVERSITY OF
BIRMINGHAM

Jinan University partnership to deliver
Mathematics courses

Guangzhou Municipal Government



ECONOMIC, SOCIAL, AND CULTURAL IMPACT OF THE UNIVERSITY OF BIRMINGHAM



UNIVERSITY OF
BIRMINGHAM



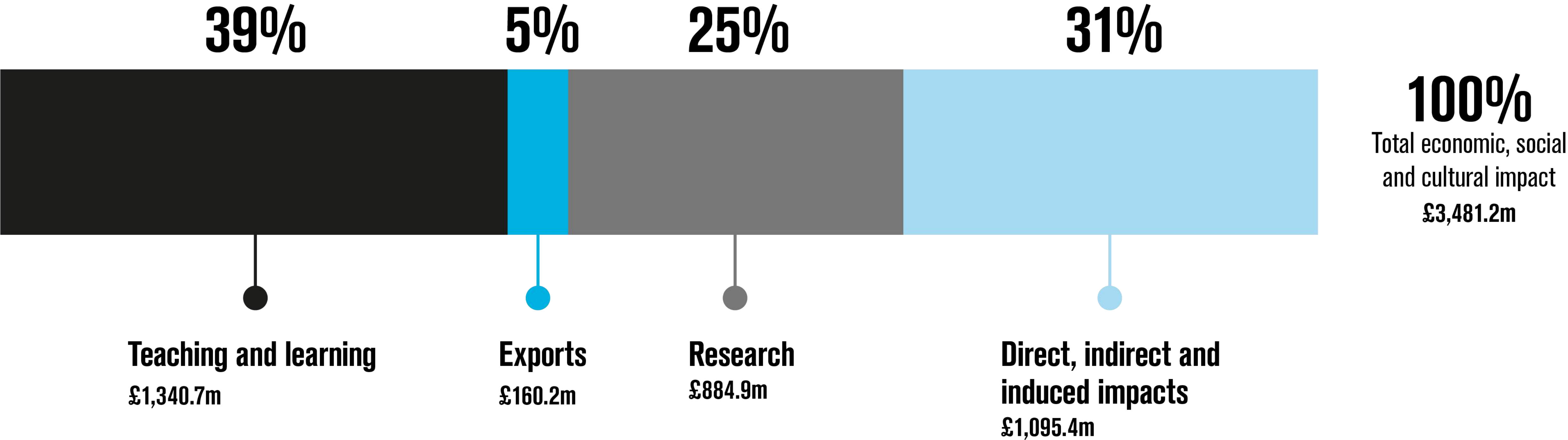
WE CONTRIBUTE **£3.5 BILLION**
EVERY YEAR TO OUR ECONOMY

THIS EQUATES TO THE COST OF
BUILDING **7 FLAGSHIP HOSPITALS**
OR **140 STATE-OF-THE-ART**
SECONDARY SCHOOLS.



UNIVERSITY OF
BIRMINGHAM

OUR **TOTAL** IMPACT



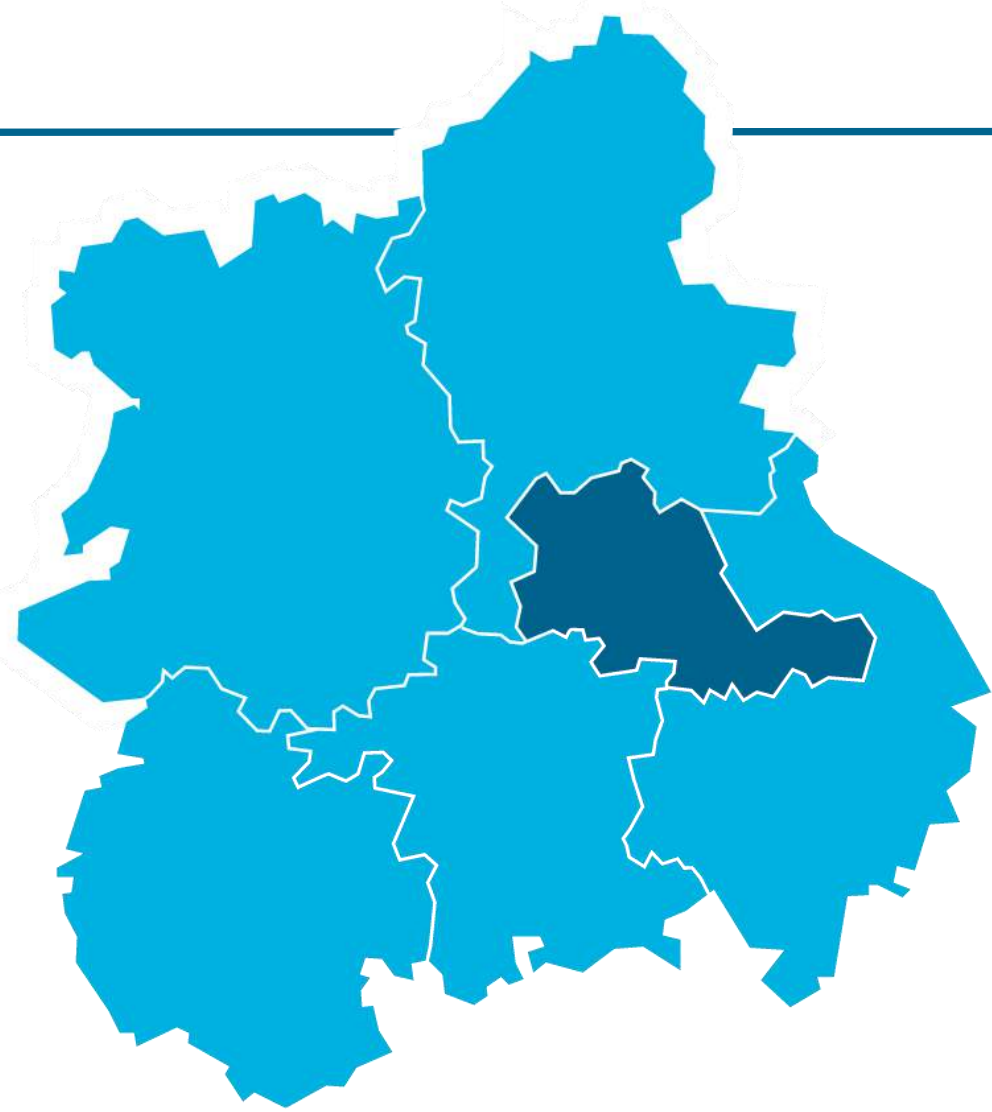
UNIVERSITY OF
BIRMINGHAM

OUR ECONOMIC IMPACT

THE IMPACT OF THE
UNIVERSITY'S SPENDING AND
THAT OF OUR STUDENTS IS
£1.09BN PER YEAR

£678.8m
is generated within
Birmingham's economy

£951.8m
in the West Midlands



Our economic impact has grown by
59% in 10 years

We are one of the largest employers
in the region – 7,200 staff

Almost 1 in every 50 jobs in Birmingham
depends on the University of Birmingham



UNIVERSITY OF
BIRMINGHAM

THE VALUE OF TEACHING AND LEARNING

OUR TEACHING CONTRIBUTES
£1.34BN TO THE ECONOMY

WE HAVE 34,160 STUDENTS AND
100,000 ONLINE LEARNERS



UNIVERSITY OF
BIRMINGHAM

We are giving more young people the
chance to study at university

More than 22,000 pupils participate in
our schools outreach activity annually

Our undergraduate population:

- 80% from state schools
- 23% from lower socio-economic backgrounds





The University of Birmingham had a big impact on me when I first entered the Year 10 residential summer school programme, and the subsequent academic enrichment programme opened my eyes to medicine. From then on I knew that was my calling, so I buckled down, got on with my studies to get into the University of Birmingham... Everything I learned I am now relating and putting into practice when I am treating every single patient that comes through the door.



*Dr Shayan Ahmed, New Cross
Hospital Wolverhampton*

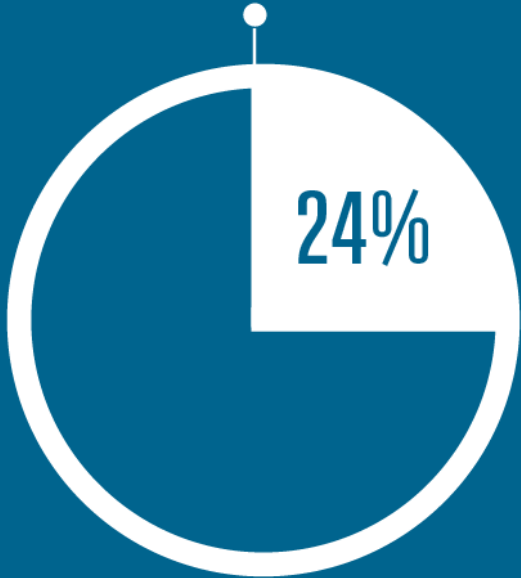


UNIVERSITY OF
BIRMINGHAM

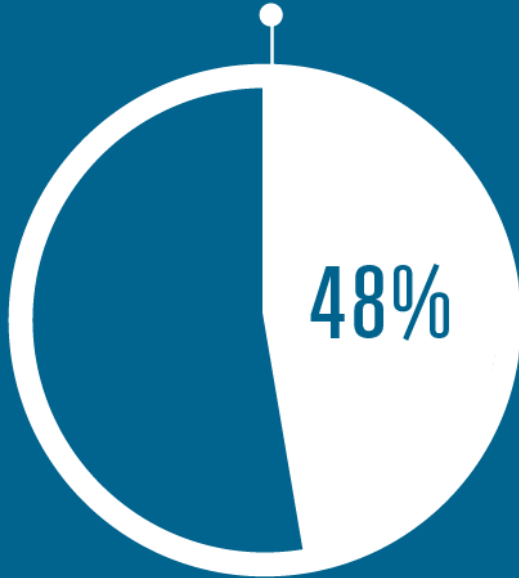


We are a net importer of talent and skills to the region

24% of our students come from the West Midlands



48% stay here after graduation

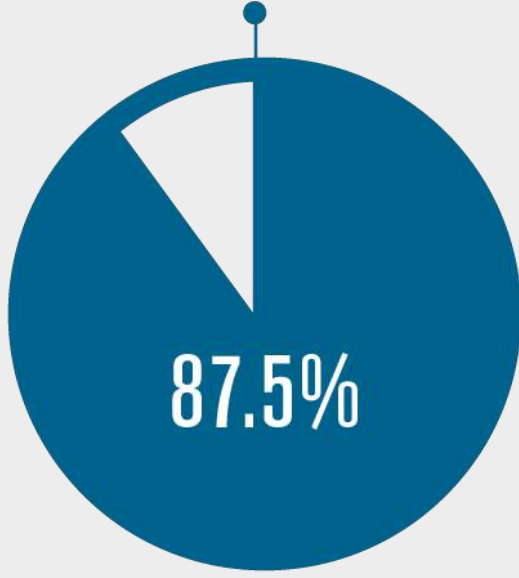


We are developing the region’s healthcare sector

Almost 1,700 people who completed their studies with us in 2014–15 work in the healthcare sector



87.5% of students are in graduate-level jobs or further study within six months of graduating



We are developing entrepreneurs

In 2014–15 we supported our students and graduates to start over 50 new businesses

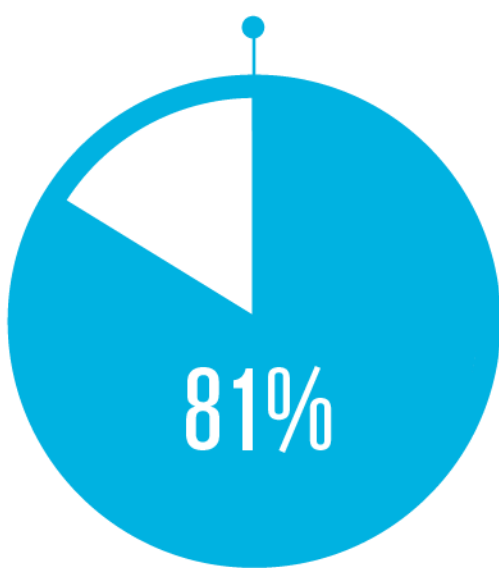


THE VALUE OF RESEARCH AND KNOWLEDGE TRANSFER

EVERY £1M INVESTED IN OUR RESEARCH BY THE UK RESEARCH COUNCILS GENERATES AN ADDITIONAL £12M FOR THE ECONOMY

Our research is world leading

81% of research rated as internationally world leading (3*) or excellent (4*)



30 subject areas classed as world leading



Our research and knowledge transfer activity is worth £885m

We are driving innovation

154 records on invention and 119 new patent applications filed in 2014-15

30 active University spin-out companies



A GLOBAL UNIVERSITY

EIGHT ADDITIONAL INTERNATIONAL
UNDERGRADUATE STUDENTS
WOULD ADD **£1M** TO THE ECONOMY

Our international students contribute
£160.2m to the economy

Advocates for Birmingham and
the UK **around the world**



3,852 international students
started studying with us in 2014–15

We have **300,000 alumni** across the globe

Every year 1,000 students benefit from
international exchange programmes



UNIVERSITY OF
BIRMINGHAM

OUR SOCIAL AND CULTURAL IMPACT

Success at Rio 2016. Golds for:

Lily Owsley MBE and Sophie Bray MBE - GB Hockey

Pam Relph MBE - LTA Mixed Coxed Four

Lora Fachie MBE - Tandem B 3000 Pursuit

Paul Manning MBE – Women's Cycling Coach



UNIVERSITY OF
BIRMINGHAM

Our academics gave **2,280 days** to supporting **cultural activities** (more than six years!)

We have **three museums**, an **art gallery**, a **botanic garden** and **two concert halls** bringing cultural richness to the community



OUR SOCIAL AND CULTURAL IMPACT

**6,018 STUDENTS
VOLUNTEERED THEIR TIME**

More than **262,000** individuals attended
public events at the University



UNIVERSITY OF
BIRMINGHAM

Our **research and teaching** supports
entrepreneurs and leaders in some of the
most challenging sectors across the globe

The University of Birmingham
School is the most oversubscribed
comprehensive school in
Birmingham



A UNIVERSITY WITH IMPACT

We contribute **£3.5bn** every year to the economy

Our teaching contributes **£1.34bn** to the economy

Every eight additional international undergraduate students would add **£1m to the economy**

Every **£1m invested** in our research by the UK Research Councils **generates an additional £12m** for the economy

Almost 1 in 50 jobs in Birmingham depend on the University of Birmingham



UNIVERSITY OF
BIRMINGHAM





UNIVERSITY OF
BIRMINGHAM



BIRMINGHAM
GLOBAL

Lord Bilimoria of Chelsea
Chancellor



UNIVERSITY OF
BIRMINGHAM



BIRMINGHAM
GLOBAL

Francesca McDonagh
Head of Retail Banking Wealth
Management UK and Europe,
HSBC



UNIVERSITY OF
BIRMINGHAM



BIRMINGHAM
GLOBAL

Lord Bilimoria of Chelsea
Chancellor