

UNIVERSITY OF
BIRMINGHAM

School of Computer Science Family

Part of
THE EPS COMMUNITY



Spring 2015

Greetings

As you will see from this newsletter it has been a busy few months in the School of Computer Science, with the University launching plans for the state-of-the-art [Collaborative Teaching Laboratory](#) and our researchers finding [unique approaches to data analysis](#) and [developing an app to help monitor depression](#). The past few months have also seen us celebrate the inaugural lectures of [Professor Russell Beale](#) and [Professor Jeremy Wyatt](#).

Our students have also been incredibly active, with CSS holding careers, social and sporting events, and we welcome the Women in Science and Engineering Society and I look forward to hearing more about their future activities supporting and promoting women within Science, Technology, Engineering and Maths (STEM).

As the end of the second semester in the 2014-15 academic year approaches, I would like to wish you all a pleasant Easter and I look forward to updating you with the latest news from the School and our students in the Summer Term.

With best wishes,

Professor Jon Rowe
Head of School
Computer Science

In this issue...

[News from the School](#)

[New staff](#)

[Your School needs you](#)

[Events taking place](#)



Connect with us on

LinkedIn



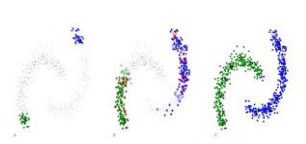
News from the School of Computer Science

University launches plans for Collaborative Teaching Laboratory



The University has launched ambitious new plans for a £40 million state-of-the-art Collaborative Teaching Laboratory (CTL) to facilitate the teaching of science, technology, engineering and maths (STEM) subjects. It will enable collaborative and interdisciplinary working amongst undergraduate and postgraduate taught students, providing a transformational teaching experience to enable them to develop the skills and experience required by employers. [Read more.](#)

Mapping biological sequences or tracking tweets: computer scientists find new, unique approaches to data analysis



Classification models are of overall importance in a variety of data analysis tasks, like classifying patient data to diseases or images to categories. If the training data for these models are vectorial and expected to be fully labeled, effective classifiers are readily available. In the modern world where data are generated much quicker than we are able to analyze it, the labeling of data becomes very costly and is often partially missing. [Read more.](#)

CSS Update



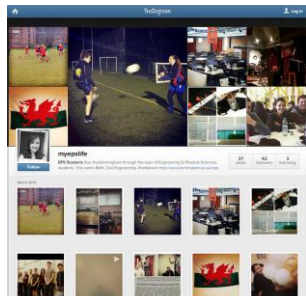
CSS has gone from strength to strength this academic year and the Society is providing a wide range of events for members. President Diana Murgulet [tells us more.](#)

Welcome to WISE - Women in Science and Engineering Society



The Women in Science and Engineering (WISE) Society are the newest student group to join the EPS Community. They work to provide as many events and opportunities as possible to members across the College of Engineering and Physical Sciences to integrate, form networks and to help inspire the next generation of female scientists and engineers. Annabel Fitzgerald [tells us more.](#)

Student Instagram Takeover



With the growing popularity of Instagram as a social networking service, the College has recently launched a student-led takeover account. Every two weeks a different student from across the College will be managing the 'MyEPSTLife' channel, taking photos and videos of their experiences and highlighting activity across our Schools and the wider University community. Explore the current activity [here.](#)

Measuring 'MoodTraces': new app helps monitor depression



Scientists from the University of Birmingham have developed an app that can measure the activity patterns of patients with depression and provide the necessary support. "MoodTraces" is a smartphone app designed to monitor and evaluate a person's mood and activities in real-time, allowing healthcare officers, doctors and charity workers to intervene when behaviours indicate a worsening depressive state. [Read more.](#)

Changing Interactions: A perspective on the nature of our interaction with computers, and what this means for the future



[Professor Russell Beale](#), Professor of Human-Computer Interaction, delivered his Inaugural Lecture on 'Changing Interactions: A perspective on the nature of our interaction with computers, and what this means for the future' in November. Read about Professor Beale's work [here](#).

Robot Life: A User's Manual



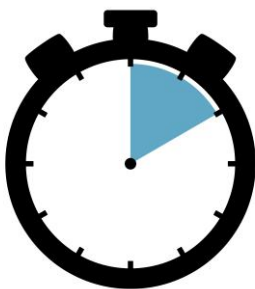
[Professor Jeremy Wyatt](#), Professor of Robotics and Artificial Intelligence, recently celebrated his Inaugural Lecture on 'Robot Life: A User's Manual'. View Professor Wyatt's lecture [here](#).

Don't miss out! Book your place on the EPS Reunion 2015!



Do you have fond memories of your time at the University of Birmingham? Do you still keep in touch with those classmates who you pulled all-night study sessions with to get that last assignment finished? As a graduate of the College of Engineering and Physical Sciences, we would love for you to join us on campus on Saturday 20 June 2015 for a reunion. [Read more.](#)

Mini chance to make a massive difference



You can make a difference to your University in the time it takes to make a cup of tea.

To mark Micro-Volunteering Day on 15 April there are a whole range of opportunities to support Birmingham; all possible in just ten minutes or less.

These bite-sized tasks can have a big impact: from answering questions on your shopping habits for students' dissertations, to sharing your opinion on our website design or celebrating with the University's newest alumni by sending in your graduation memories. [Email us](#) to learn more.

Scholarships available for postgraduate study



The University is pleased to announce the launch of the [Distinguished Alumni Scholarship scheme](#). Awards of £2,000 per scholarship will be offered to outstanding alumni wishing to undertake Masters study at the University during 2015. [Read more](#).

In addition 224 new £10,000 scholarships available for Masters students from under-represented groups are available for 2015 entry through the Birmingham Masters Scholarship Scheme. [Read more](#).

New staff in 2014/15

There have been a number of appointments in the School this term. [Read a summary of our new staff online here](#).

Your School needs you...

Would you be able to share some of your time, expertise or connections to help our students to succeed?

We're currently looking for help and support from alumni with the following:

- All women in science and engineering. As part of **National Women in Engineering Day, 23 June**, the EPS Community is hosting a number of activities, conversations and events designed to celebrate women in engineering and scientific careers. If you work in science or engineering and would like to sit on our panel, get involved in the conversation on Twitter, or come along to our evening event, please get in touch by [emailing us](#)
- **Undergraduate Open Day, 26-27 June**. Could you donate a couple of hours of your time to pop back to your old School and speak to our prospective students about your time at Birmingham? For more information and to get involved [email us](#)
- Work experience placements are invaluable for our students, allowing them to learn about the world of work first-hand and apply their knowledge in a real-life setting. If you work in industry and think you could offer a work experience placement to our undergraduate or postgraduate students, please [email us](#)

There are many ways in which you can give a little back, from providing a career profile, to mentoring a student. Please [email us](#) if you would like to get involved and we'll be happy to talk to you.

College and School events taking place shortly...

[EPS Inaugural Lecture Series](#)

For information on upcoming lectures in the EPS Inaugural Lecture Series please [visit our website](#)

Tuesday 9 June 2015

[EPS Societies' Awards](#)

Come and celebrate with our student societies as we recognise their fabulous achievements in 2015/16.

Time: 7pm-11pm

Venue: Great Hall, Edgbaston Campus

Saturday 20 June 2015

[EPS Alumni Reunion](#)

As a graduate of one of the nine schools in the College of Engineering & Physical Sciences (EPS), you are invited back to campus for a Summer Reunion to get together with your fellow alumni to celebrate your experiences, accomplishments and friendships at the University of Birmingham.

Time: 9.30am-6pm

Venue: Edgbaston Campus

Please visit the [website](#) for more information and to secure your place at the Reunion

Tuesday 23 June 2015

[National Women in Engineering Day Celebrations](#)

Following the success of last year's first ever National Women in Engineering Day (NWED), this year's event is being held on Tuesday 23 June to celebrate the achievements of women in engineering and science. The EPS Community will be celebrating the day with a variety of exciting activities and events on campus.

Time: Programme to be confirmed

Venue: Edgbaston Campus

For more information please [email us](#)

University events...

Saturday 25 April 2015

[Fab 'n' Refresh](#)

On Saturday 25th April 2015 the Guild of Students, in association with the Development and Alumni Office, presents Fab 'n' Refresh! Come back onto campus to party the night away with fellow alumni who graduated from 2005 onwards.

Time: 10pm-late

Venue: Joe's Bar, Guild of Students

Saturday 13 June 2015

[Alumni Sports Day](#)

Save the date for the 14th annual University of Birmingham Sport Alumni Sports Day. This year promises to be bigger and better than ever before with 16 events across 14 different sports. The events will take place on campus, at the Bournbrook and Metchley pitches and the Edgbaston Priory Club, creating a multi-sport festival.

Time: 9am-5pm

Venue: Various

Monday 22 June 2015

[Baggs Memorial Happiness Lecture 2015](#)

The Baggs Memorial Lecture began in 1976 and the lecture series has seen many distinguished speakers tackle the topic of happiness from their personal viewpoint including Yehudi Menuhin, David Attenborough, Peter Ustinov, Maureen Lipman, David Lodge, Adam Hart Davies, Robert Winston and Sue Lawley. This year the University is pleased to welcome Matthew Parris who worked for the Foreign Office and the Conservative Research Department before serving as MP for West Derbyshire.

Time: 6.30pm-8.30pm

Venue: Great Hall, Edgbaston Campus

Saturday 12 September 2015

[Golden and 50th Anniversary Reunion Lunch](#)

If you graduated in 1965 or before you are invited back to campus on Saturday 12 September to a Golden and 50th Anniversary Reunion Lunch with your fellow alumni to celebrate your experiences, accomplishments and friendships at the University of Birmingham.

Time: 10.45am-4pm

Venue: Edgbaston Campus

Alumni group events...

The University of Birmingham has alumni groups all over the world that organise local events. To join a group and see details of upcoming events please visit the [webpage](#) and select your location.

Do we have the right details for you?

Please visit [your.bham](#) or email alumnioffice@contacts.bham.ac.uk.

You have received this email from the University of Birmingham because we believe that it is relevant and of interest to you. If you would like to opt-out of receiving information from your College, School or Department by email, please opt-out by visiting your.bham, emailing alumnioffice@contacts.bham.ac.uk, or telephoning +44 (0)121 414 2773 / 2744 / 4724. In order to further tailor the communication we send, all emails are tracked and processed; further information regarding our use of data, is available by looking at our [data protection statement](#)