



Devolution: Making Travel Easy in Greater Manchester

Amanda White
Head of Rail
Transport for Greater Manchester

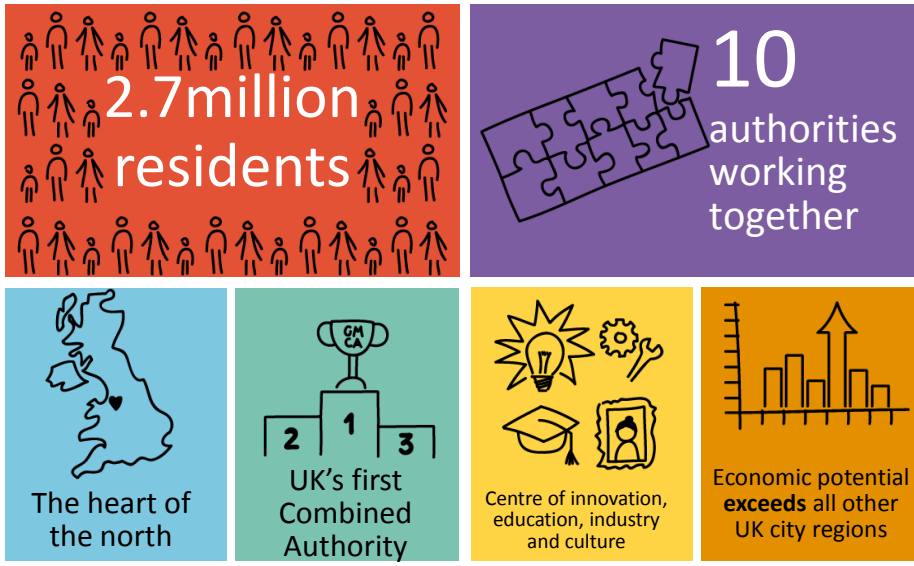


1. Who we are
2. Our mission – Making travel easy in GM
3. Transforming Tomorrow – Devolution
 - Transport for North – local strategic infrastructure development
 - Rail North – benefits of local responsibility for franchise management
 - Rail Station Devolution - Long term and integrated management of key local assets delivering unified travel





TfGM: Oversees transport and travel across Greater Manchester



“

This is Manchester.
We do things differently here.

– Anthony H. Wilson, Journalist, TV Presenter

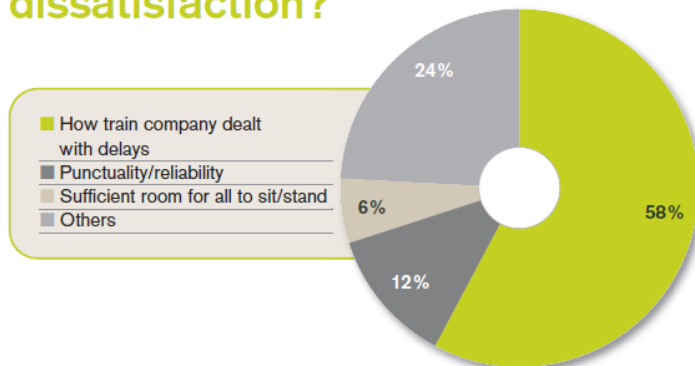
”



Making travel easy today?



What has the biggest impact on overall dissatisfaction?

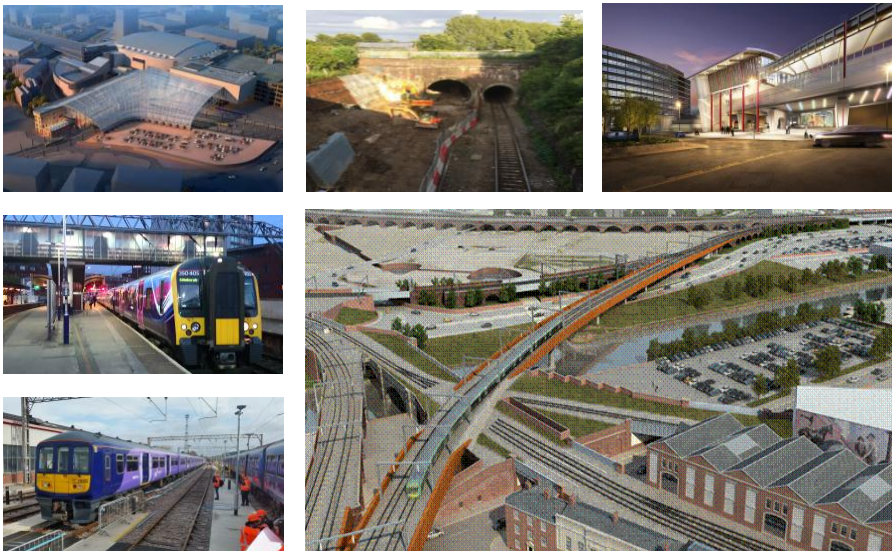




Transforming Today



Unlocking Manchester

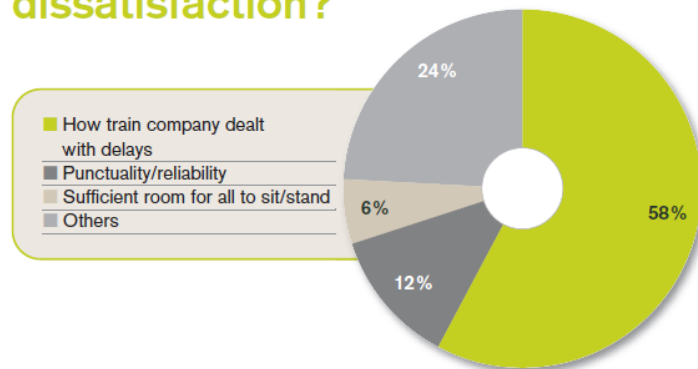




Lets not forget....



What has the biggest impact on overall dissatisfaction?



Farnworth Tunnel Electrification





Devolution: Transforming Tomorrow



Manchester Devolution: Osborne promises a mayor and new powers over policing, transport and housing to become law

The Northern Powerhouse

TRANSPORT FOR THE NORTH

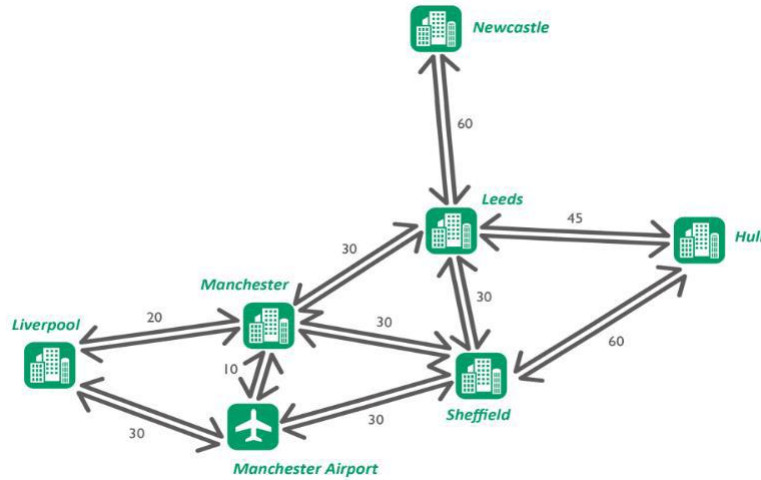


What does transformation mean?



*‘Significant **economic benefits, supporting business, tourism and job growth** and contributing to the prosperity of the North of England through better connections and **faster journeys**’*





What does transformation
mean?

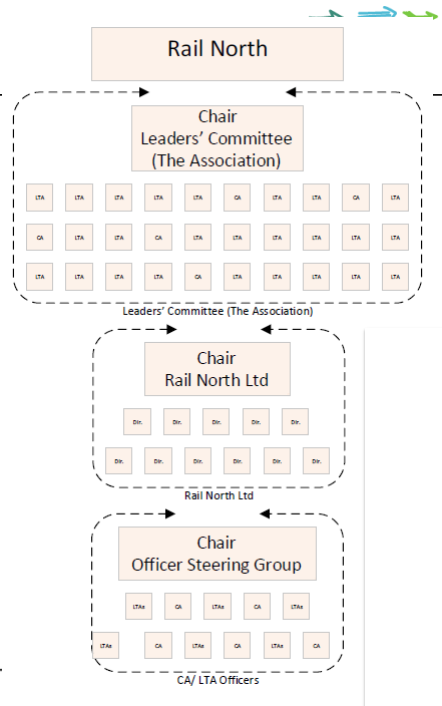


*'A future for rail in the North of England that will
support the growing economy and truly
contribute to a **transformation in rail services**'*





- Company Limited by Guarantee since September 2014.
- Members made up of **29 Local Transport Authorities** in the North.
- **Eleven Directors** of Rail North (all Senior Councillors) representing 29.
- TfGM is a **key partner** in Rail North.
- Partnership Agreement with DfT signed 20th March.
- Now working to establish management structure for franchise operation from April 2016.
- Recruitment to Rail North and Partnership roles underway



Transformational services for customers
 from April 2016



Better quality trains
 120 new-build carriages.
 Pacer's completely phased out by 2020.
 longer with more seats

Improved Customer Service
 challenging targets for customer satisfaction.

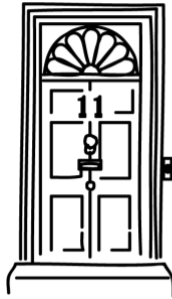
Better Train Services and Connectivity
 more services in the week and all weekend.
 A new 'Northern regional' service
 More direct services to Manchester Airport
 Enhanced connections

Investment Smart Ticketing and Fares
 Long term investment in the franchises is encouraged.
 At least £30m investment in Northern stations
 increased support and funding for Community Rail.
 smart ticketing schemes, simplified fares





GM Devolution Agreement



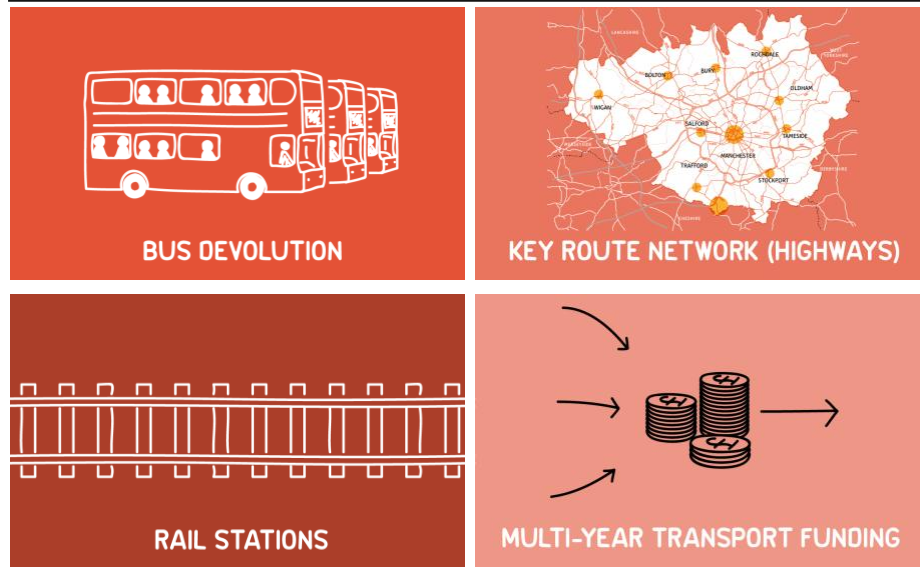
- Signed November 2014
- Government (Treasury) and Greater Manchester leaders
- Game-changing devolution package



GM Agreement

“We’re devolving power over policing, skills, housing. We’re giving the City control over transport, including buses.... And we’ll give the levers you need to grow your local economy and make sure local people keep the rewards.”

George Osborne, Chancellor of the Exchequer



What it means for Greater Manchester

Effective coordination of Greater Manchester's transport networks will:

- Enable the creation of a truly joined-up transport network
- See the introduction of simple integrated tickets and fares
- Consistent brands and behaviours - Make travel easier
- Dependable, reliable information for passengers
- Secure sustainable growth in transport
- Support the sustainable economic growth of Greater Manchester
- Help to deliver the aspirations of Transport for the North
- Ultimately help to rebalance the national economy





Thank you

www.tfgm.com/trains

railenquiries@tfgm.com
