



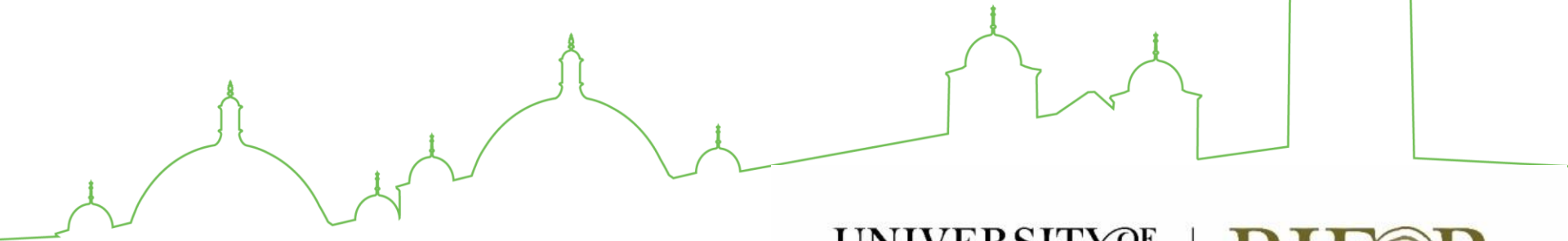
UNIVERSITY OF
BIRMINGHAM

COLLEGE OF LIFE
AND ENVIRONMENTAL
SCIENCES

Why Plants Haven't (quite) Conquered the Land

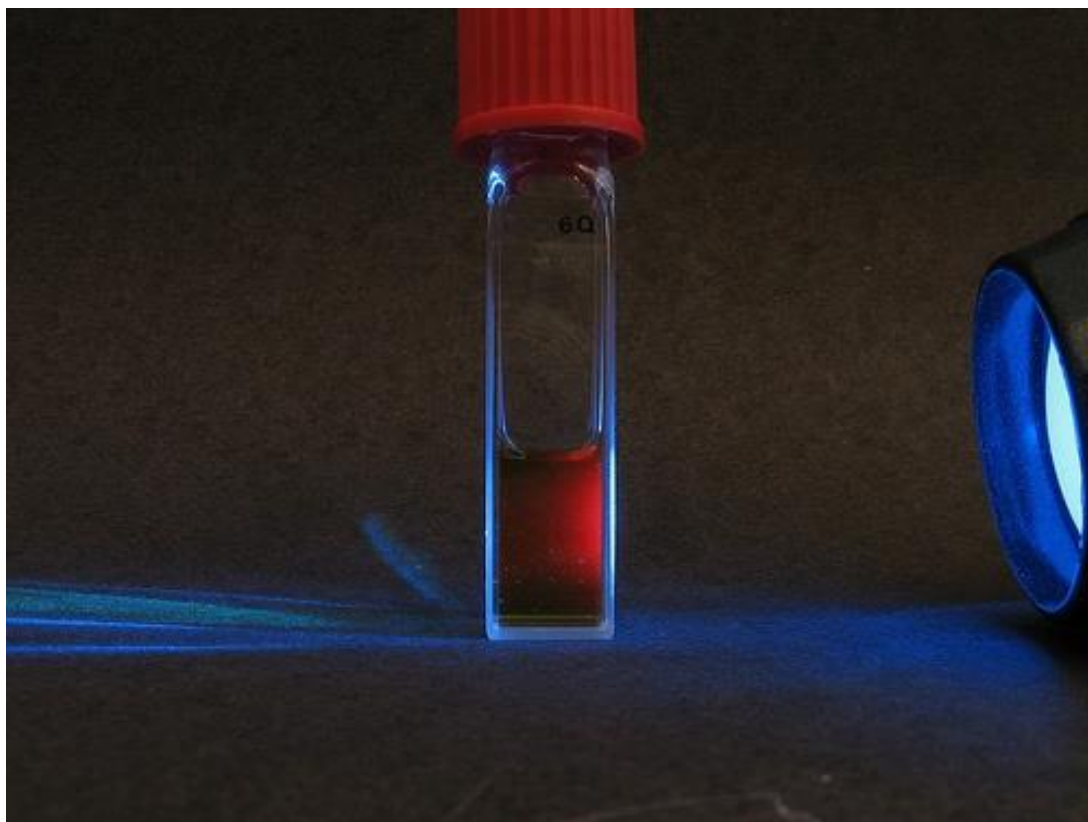
Professor Jeremy Pritchard

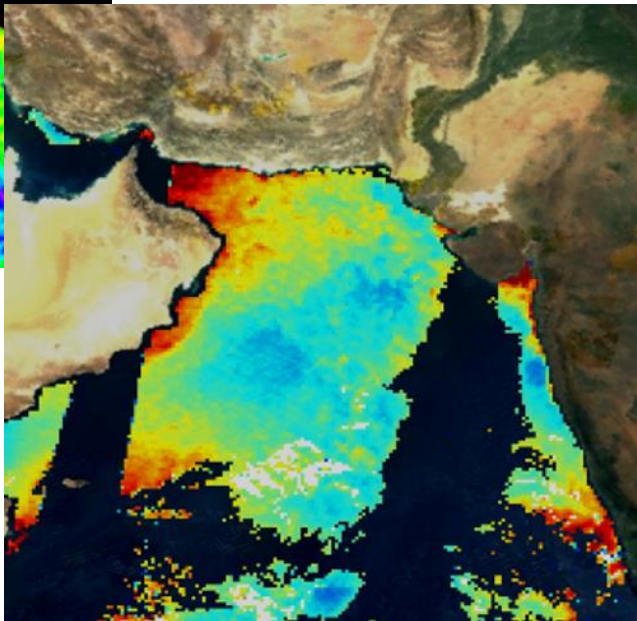
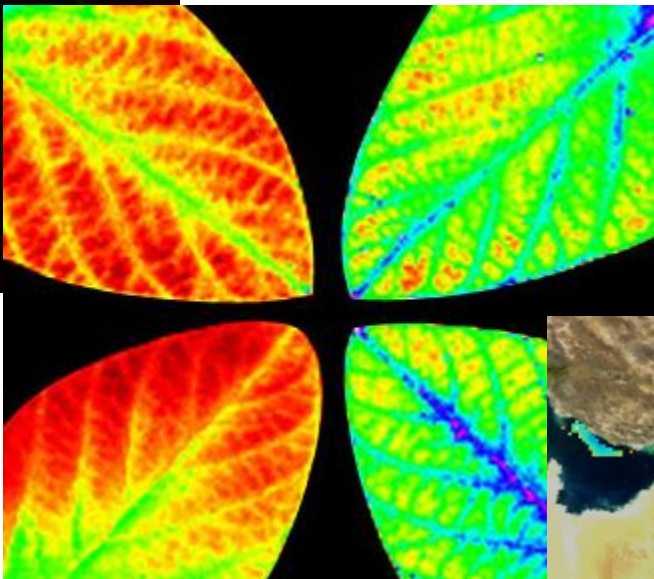
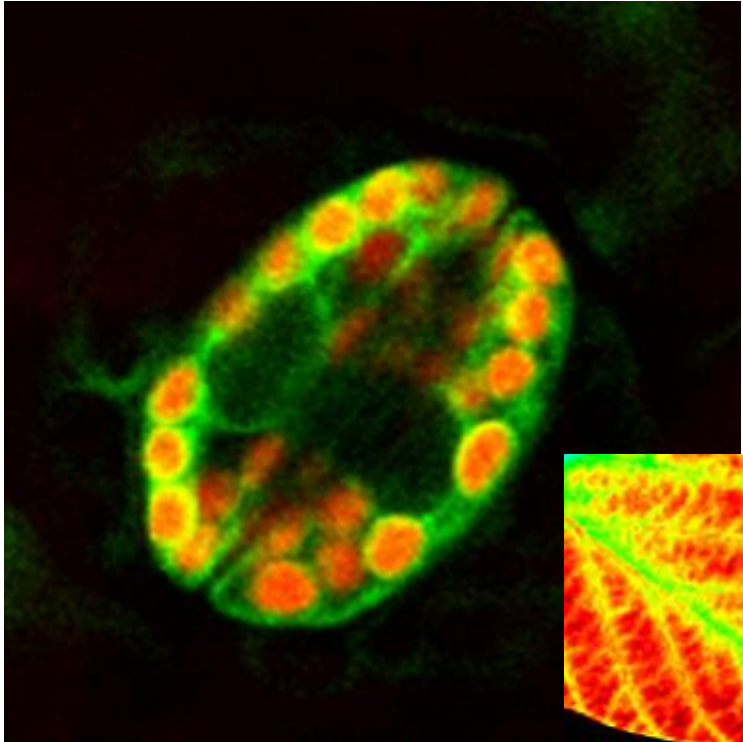
@DrJPritchard



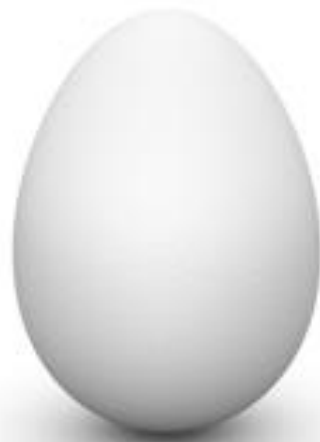
UNIVERSITY OF
BIRMINGHAM

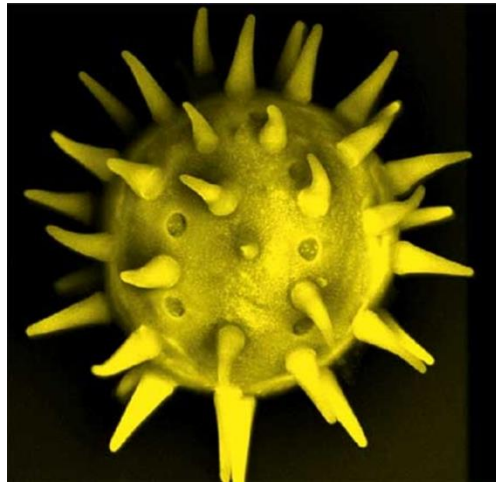
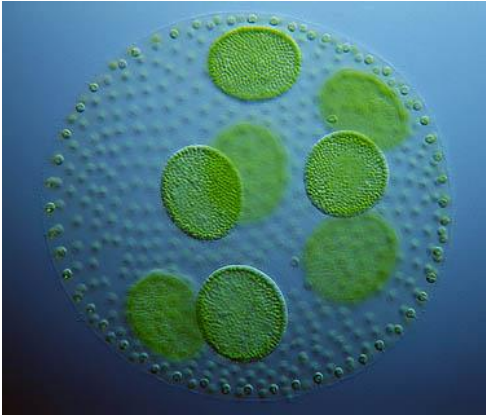
BIFOR



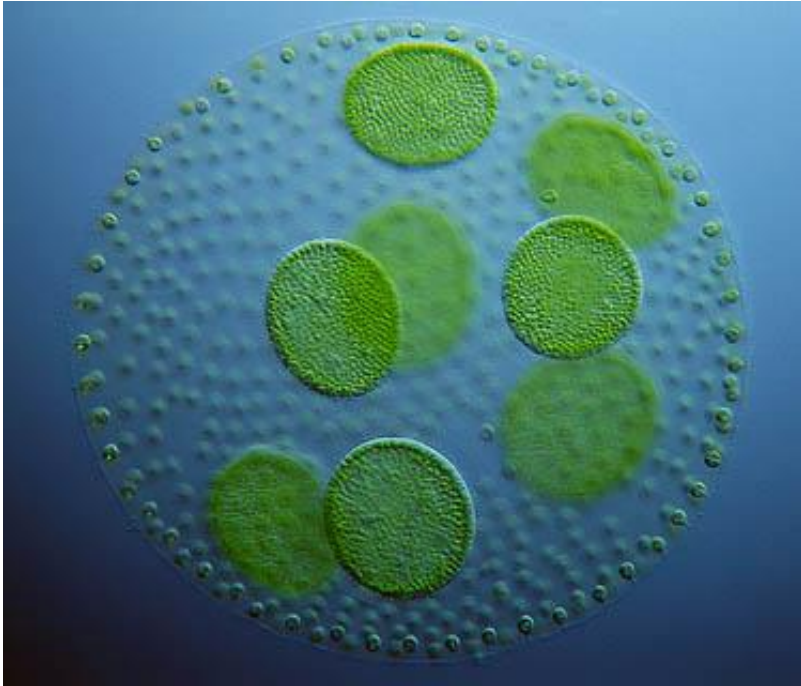




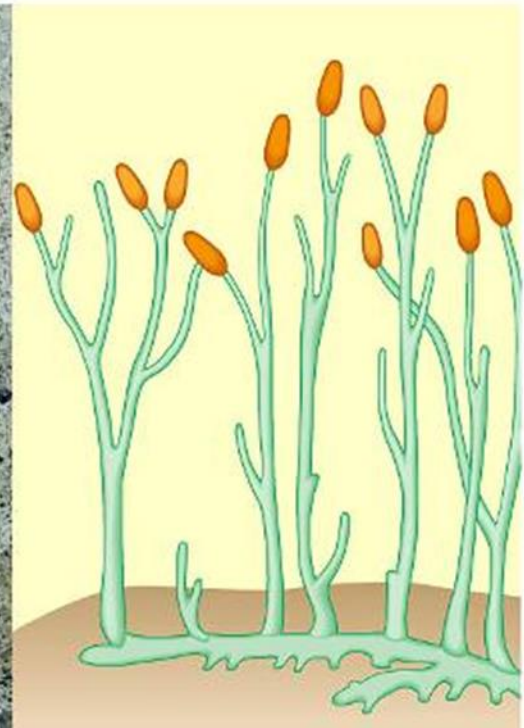




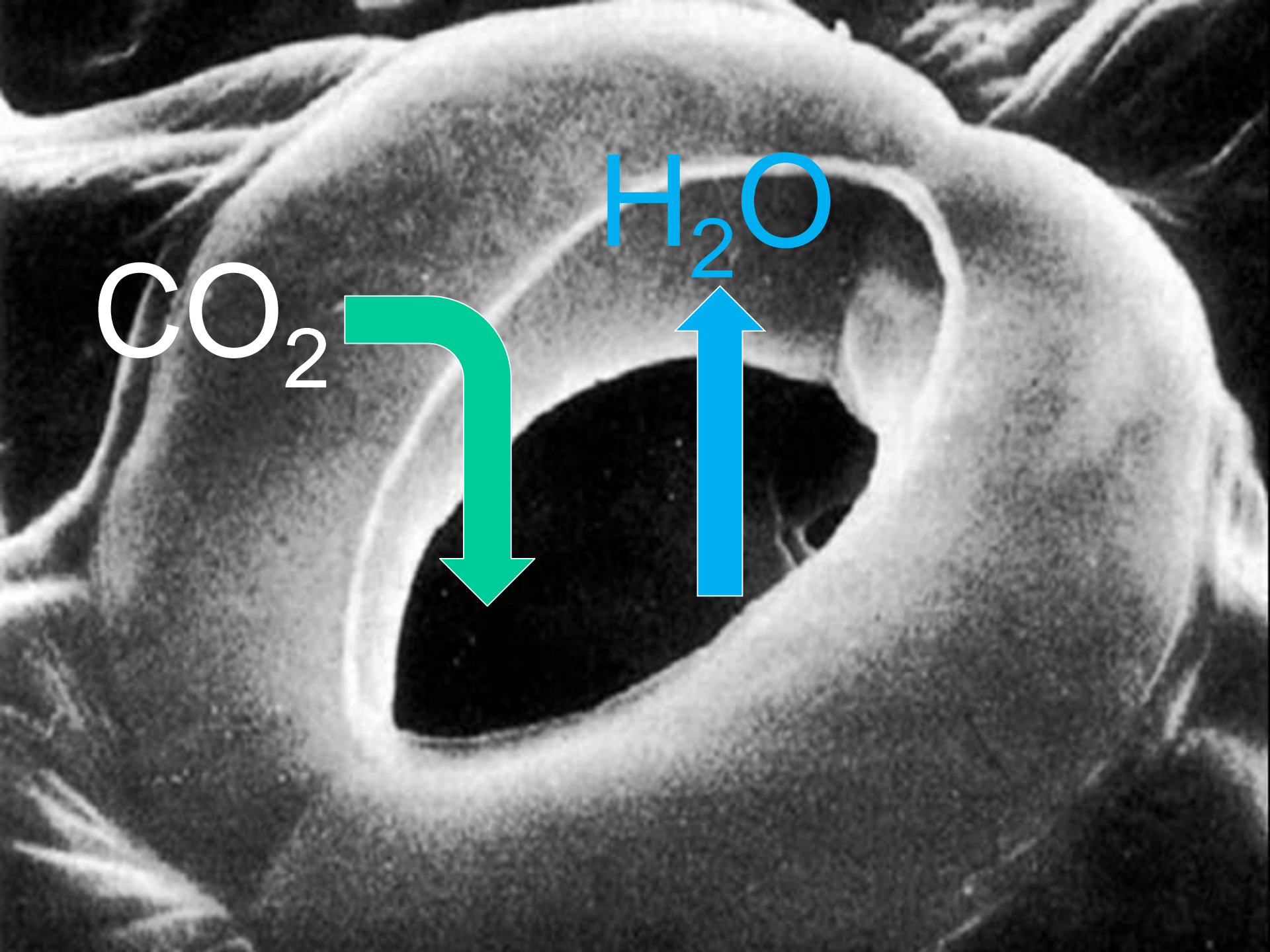
Land plants evolved from an algal ancestor that lived in water.



Early land:
A harsh environment



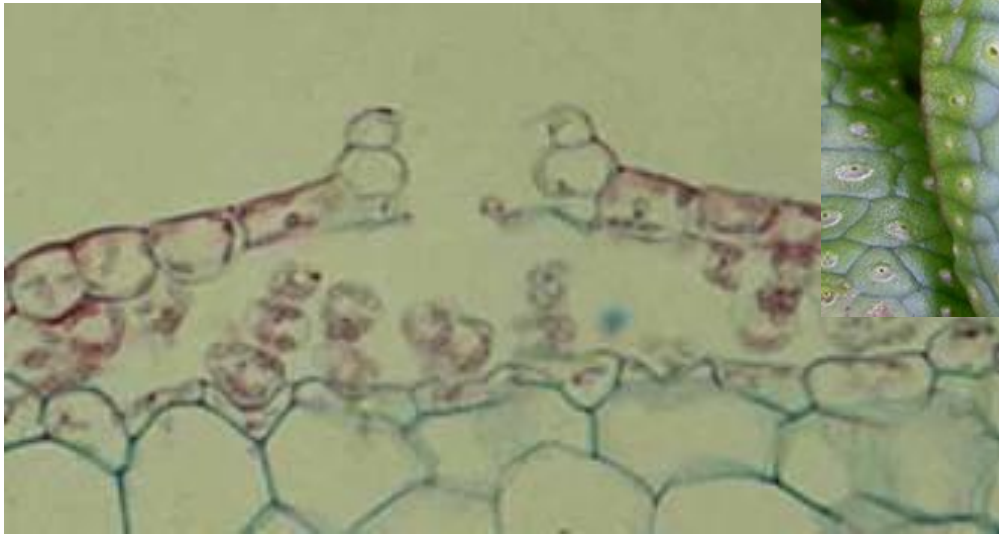




CO_2

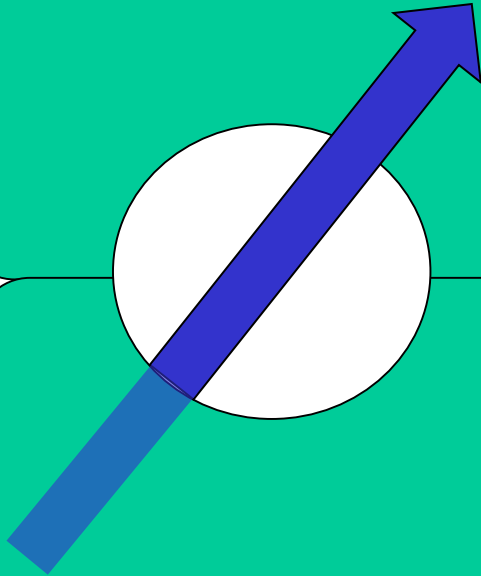
H_2O

Bryophytes

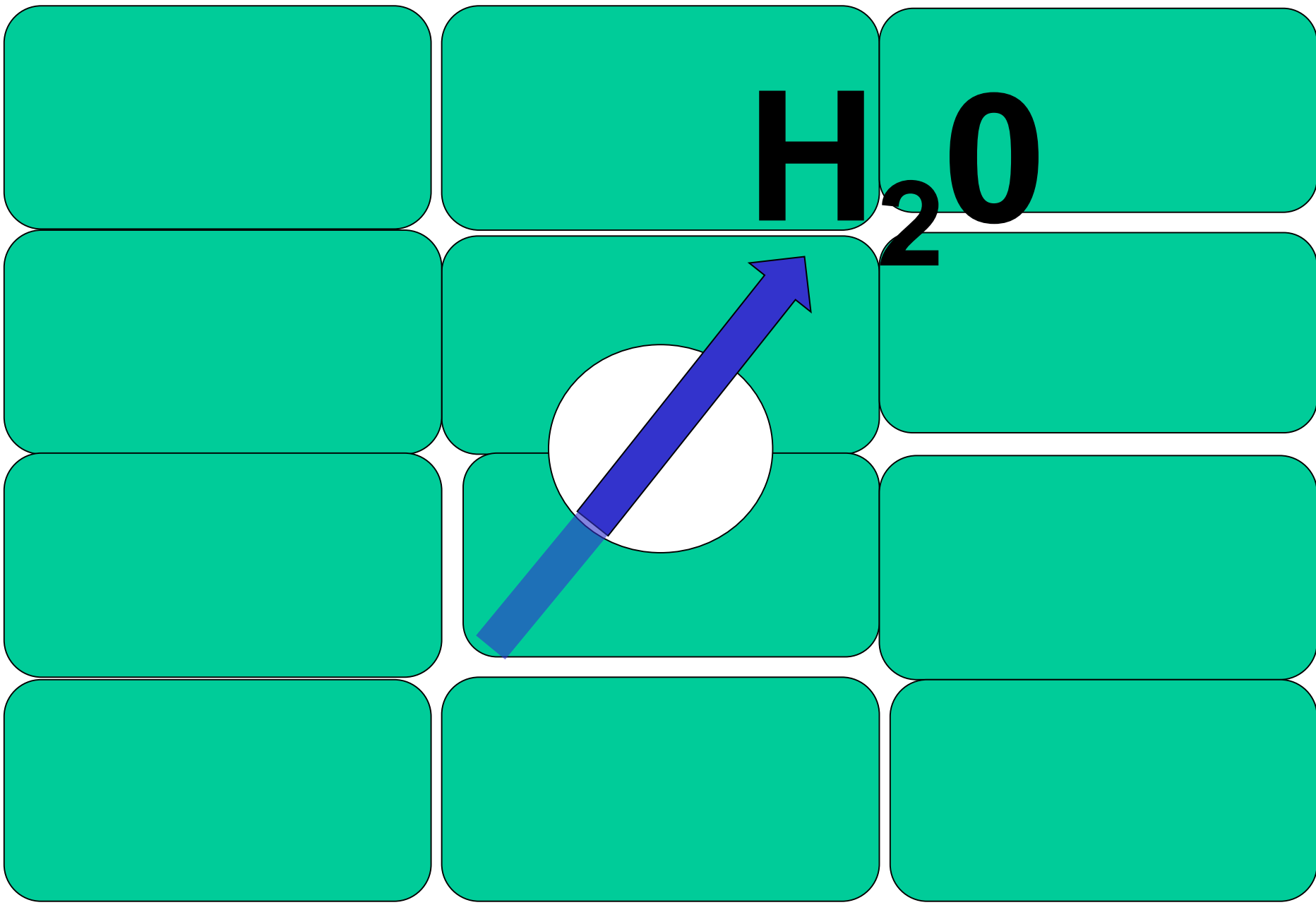


Bryophytes

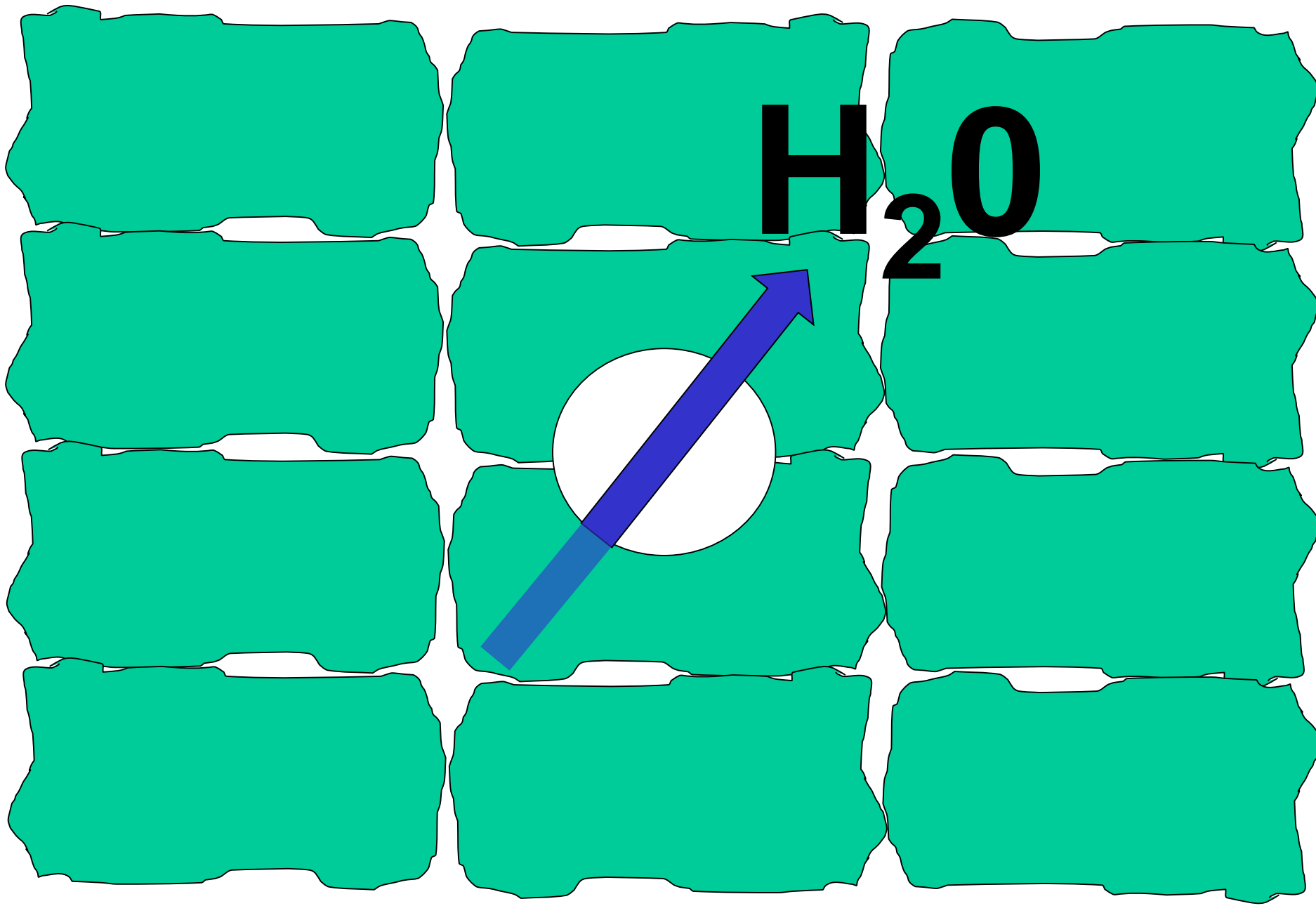
H_2O



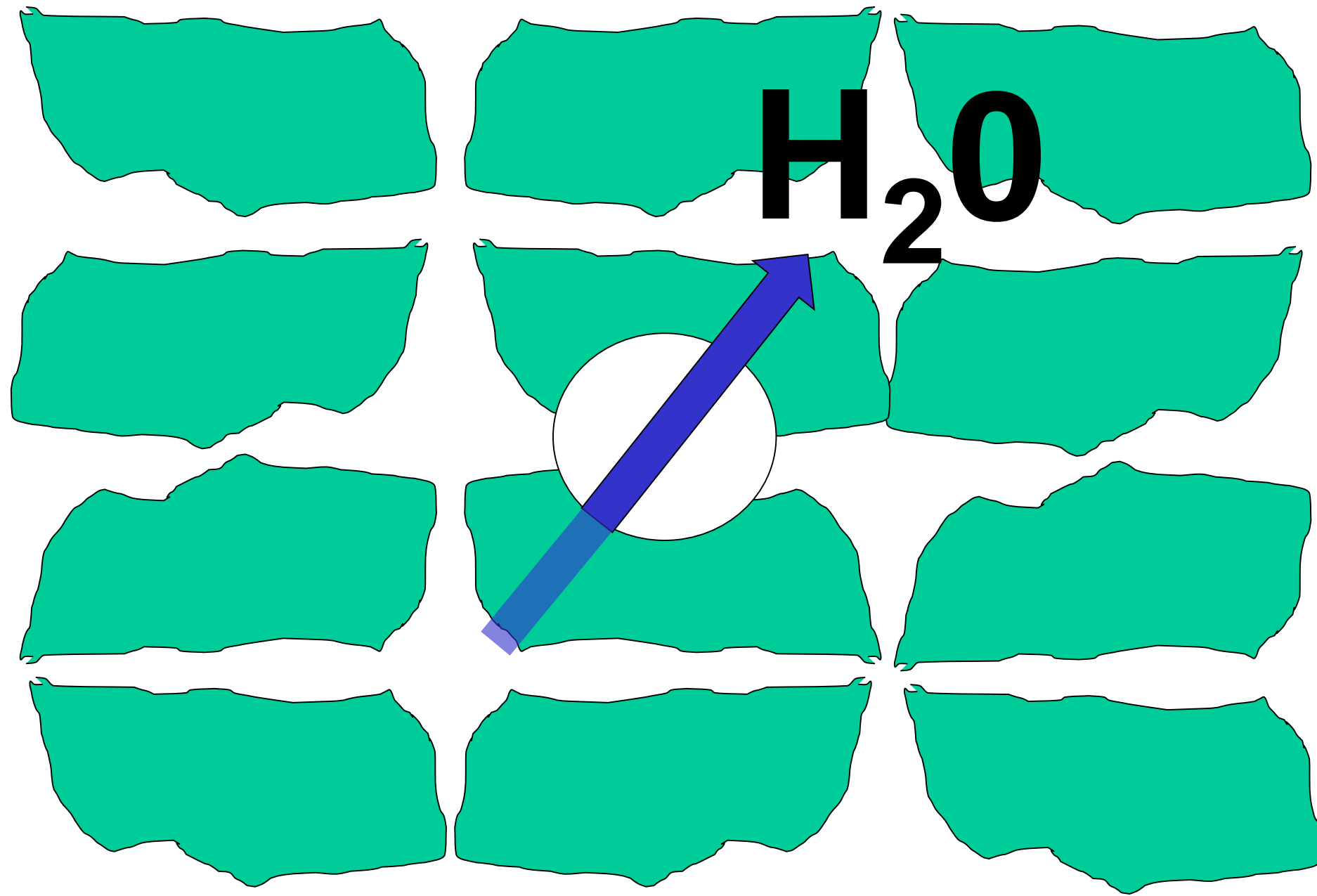
Bryophytes



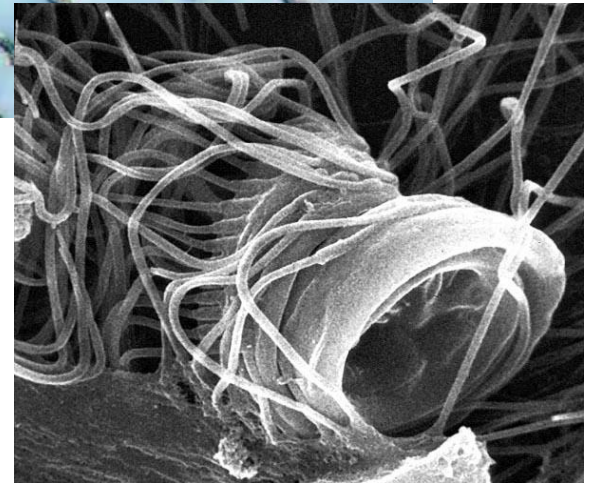
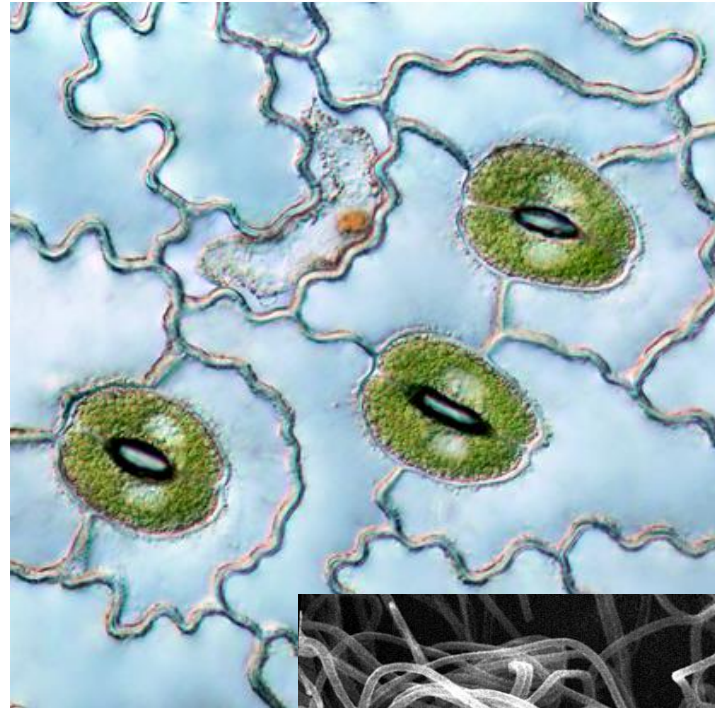
Bryophytes



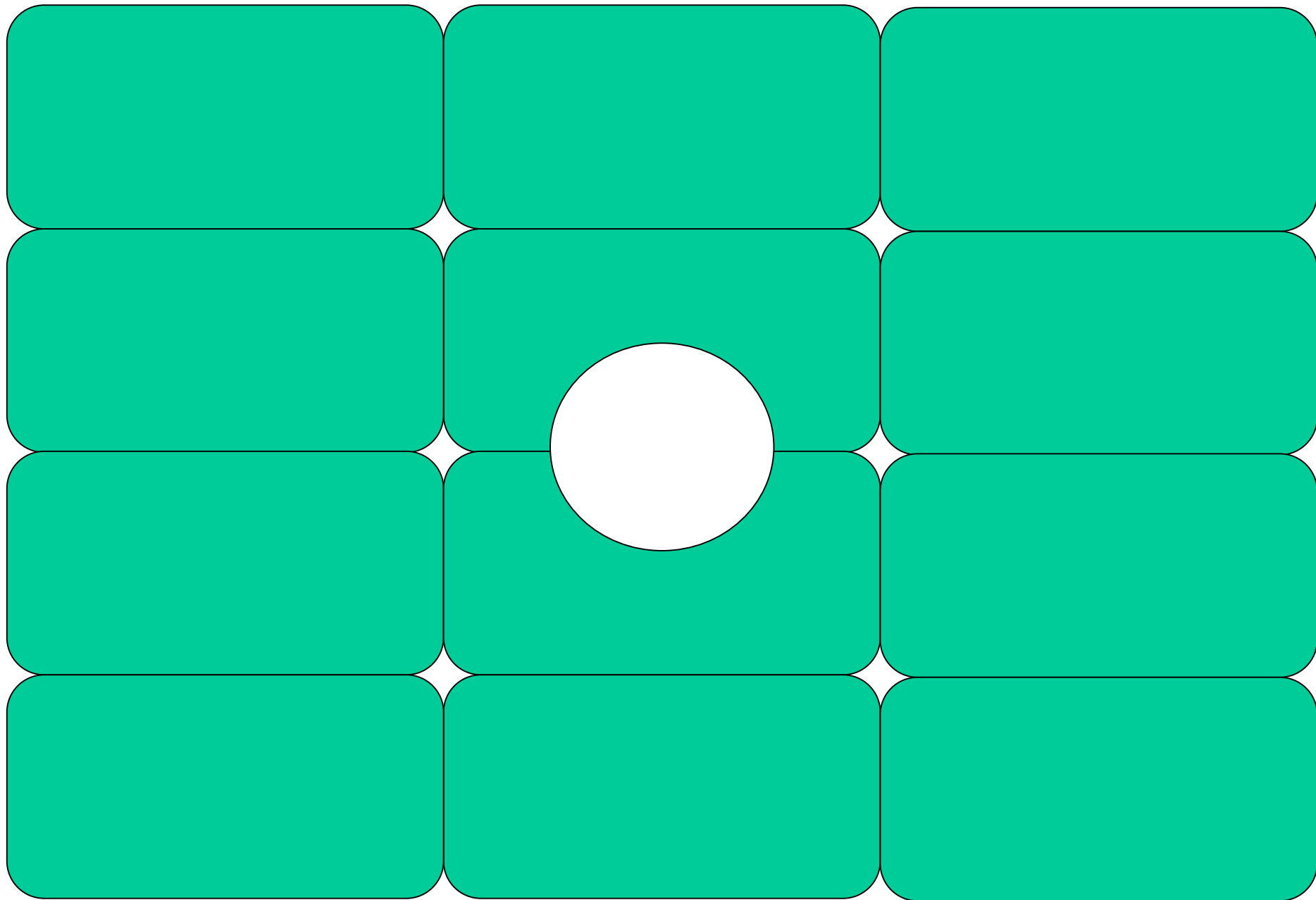
Bryophytes



(Ferns *Pteridium aquilinum*).

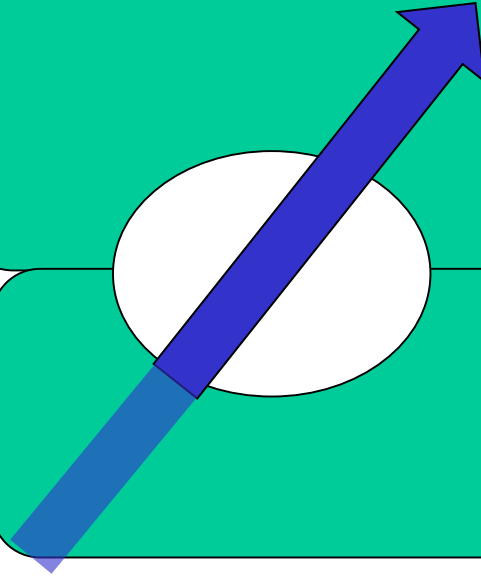


Ferns

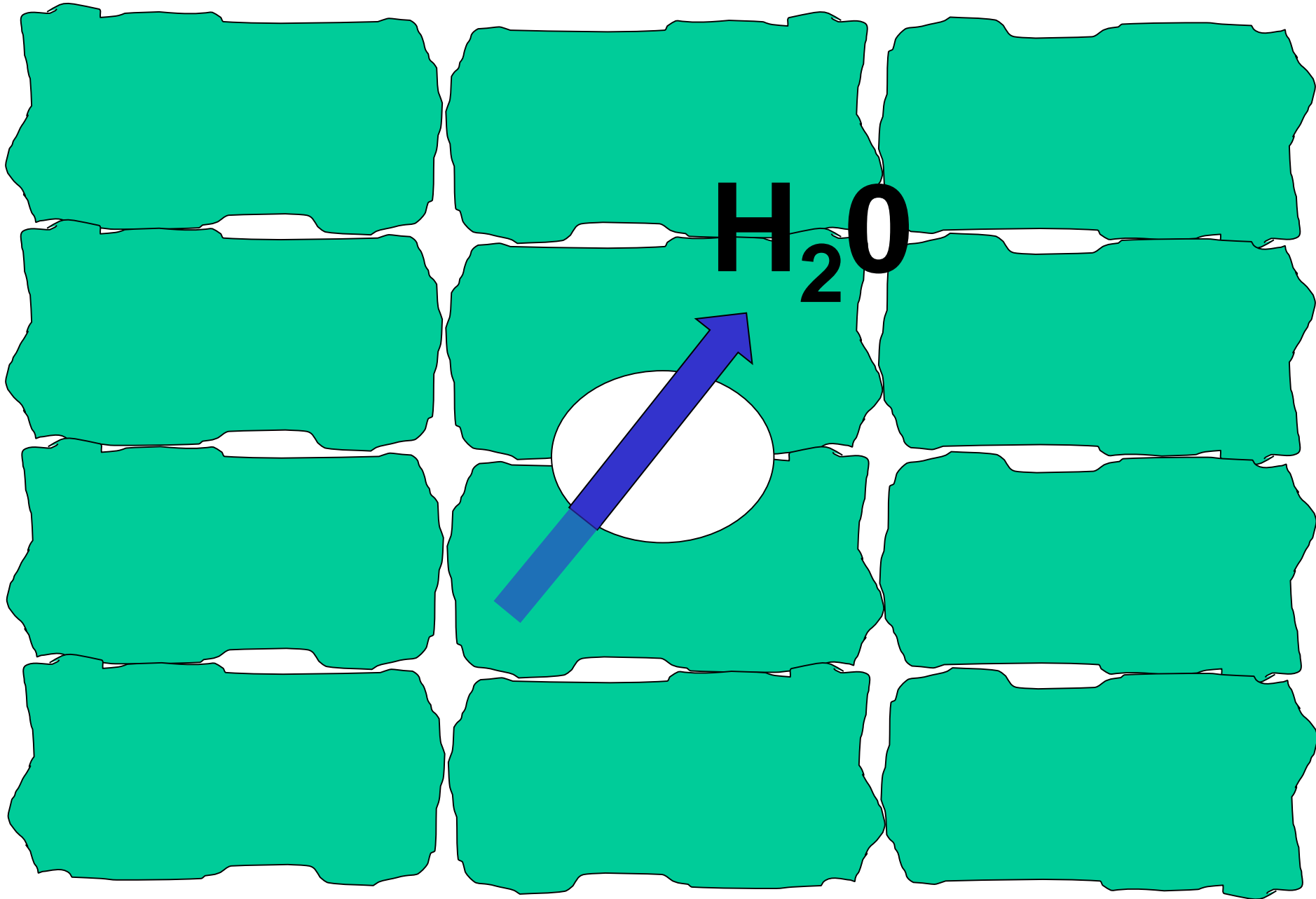


Ferns

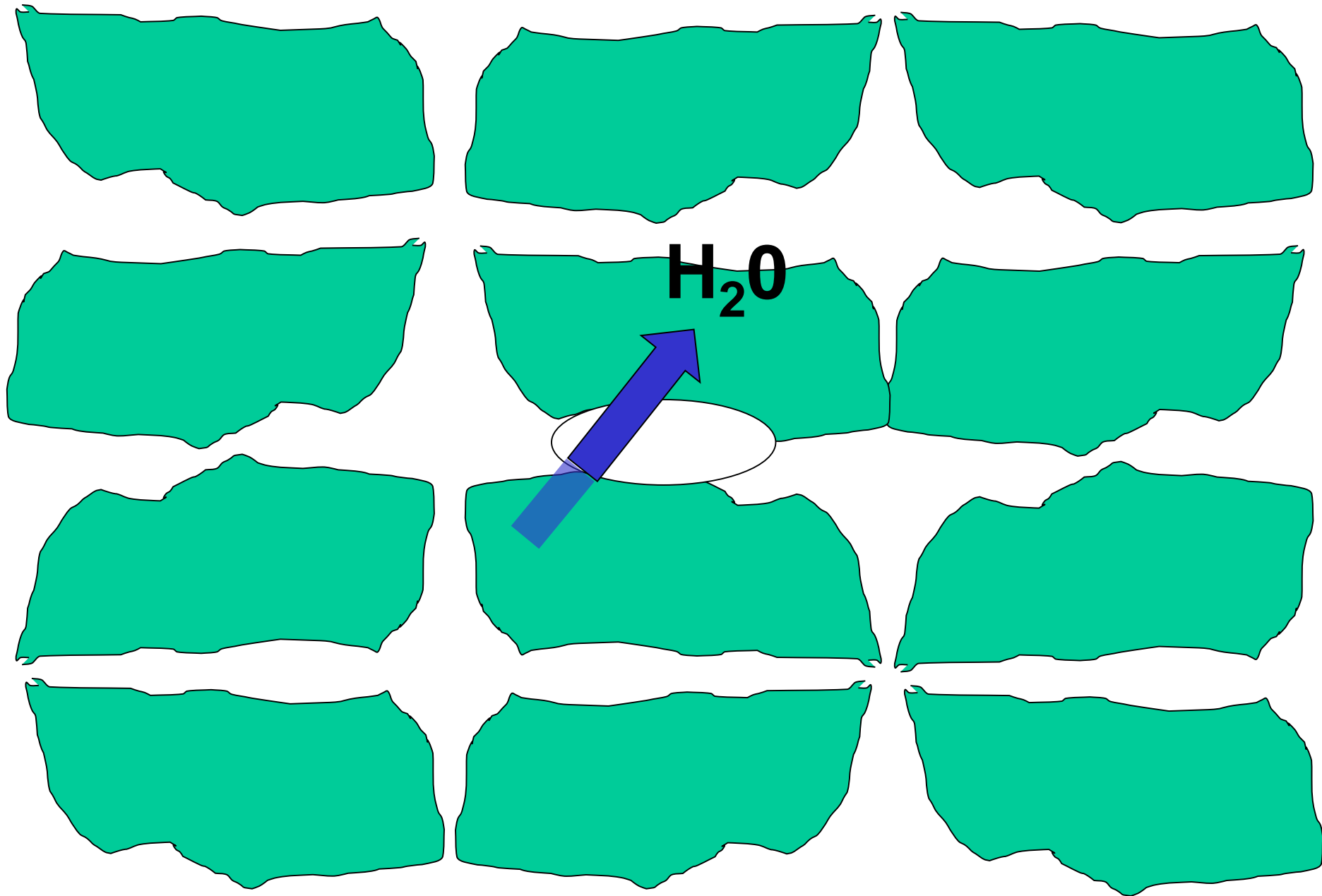
H₂O



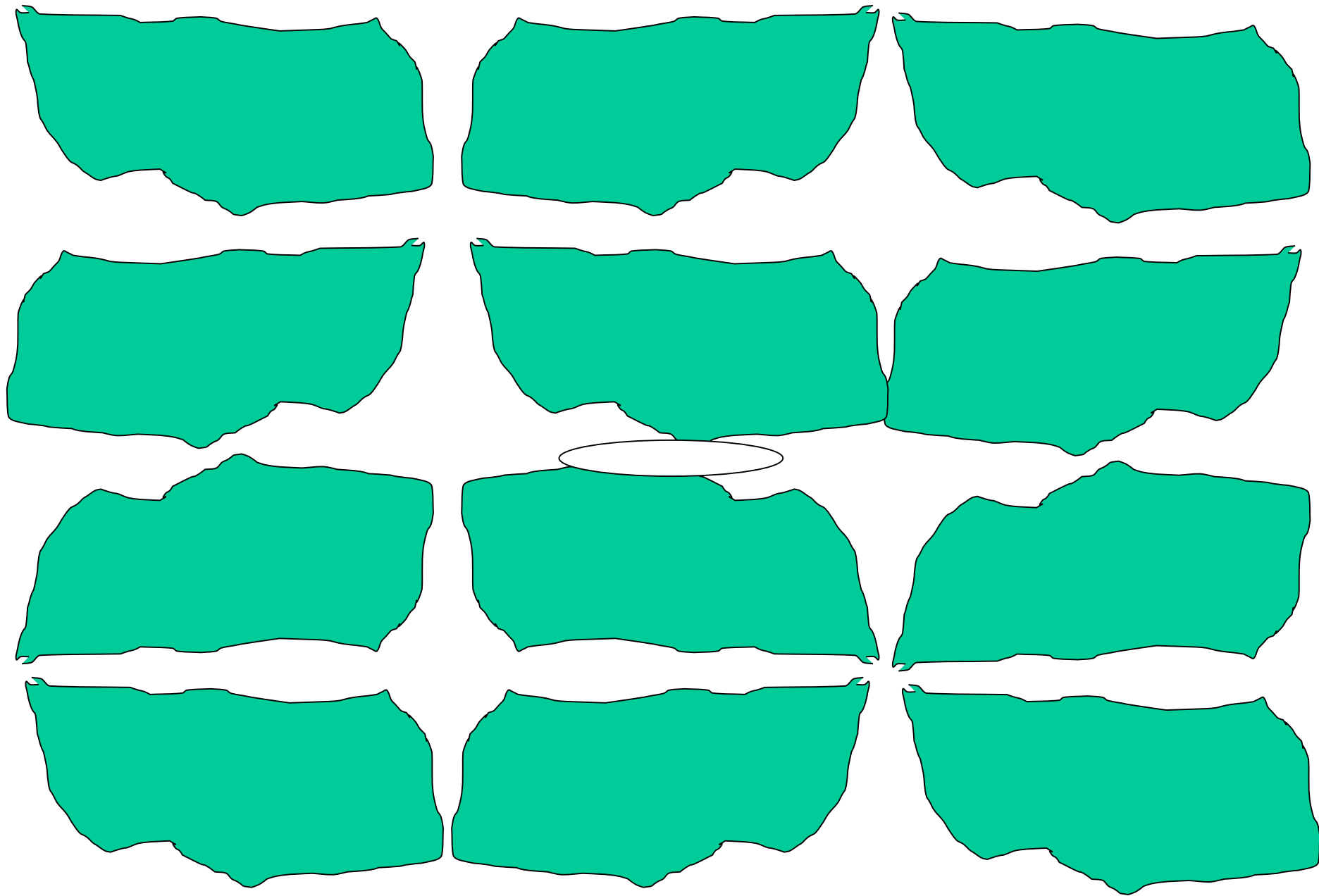
Ferns



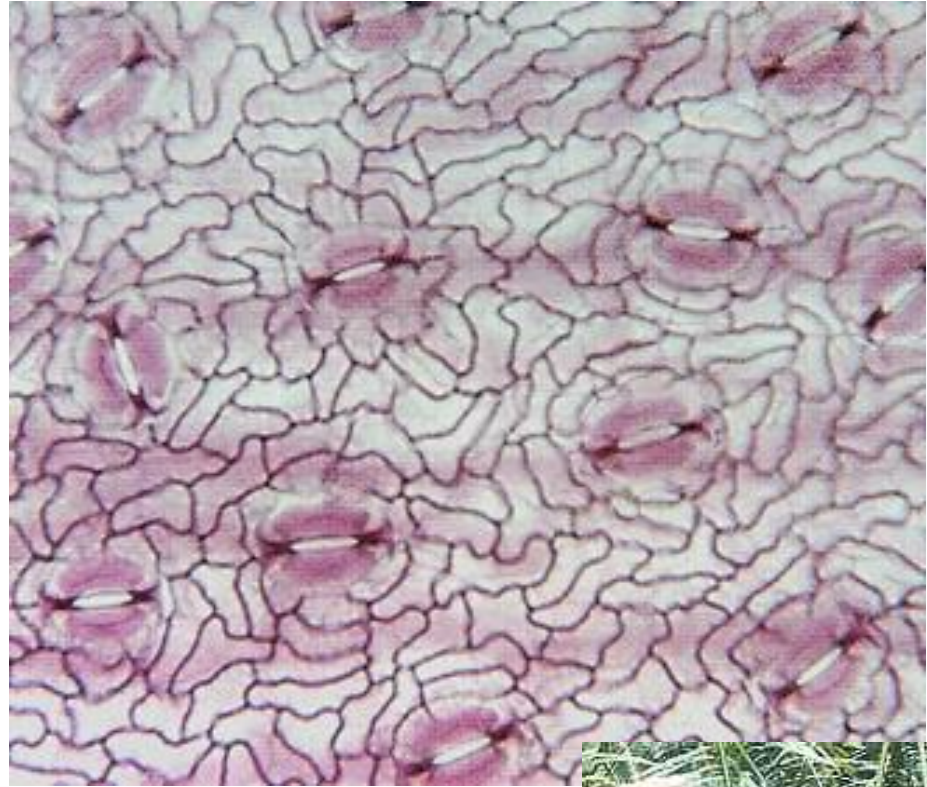
Ferns



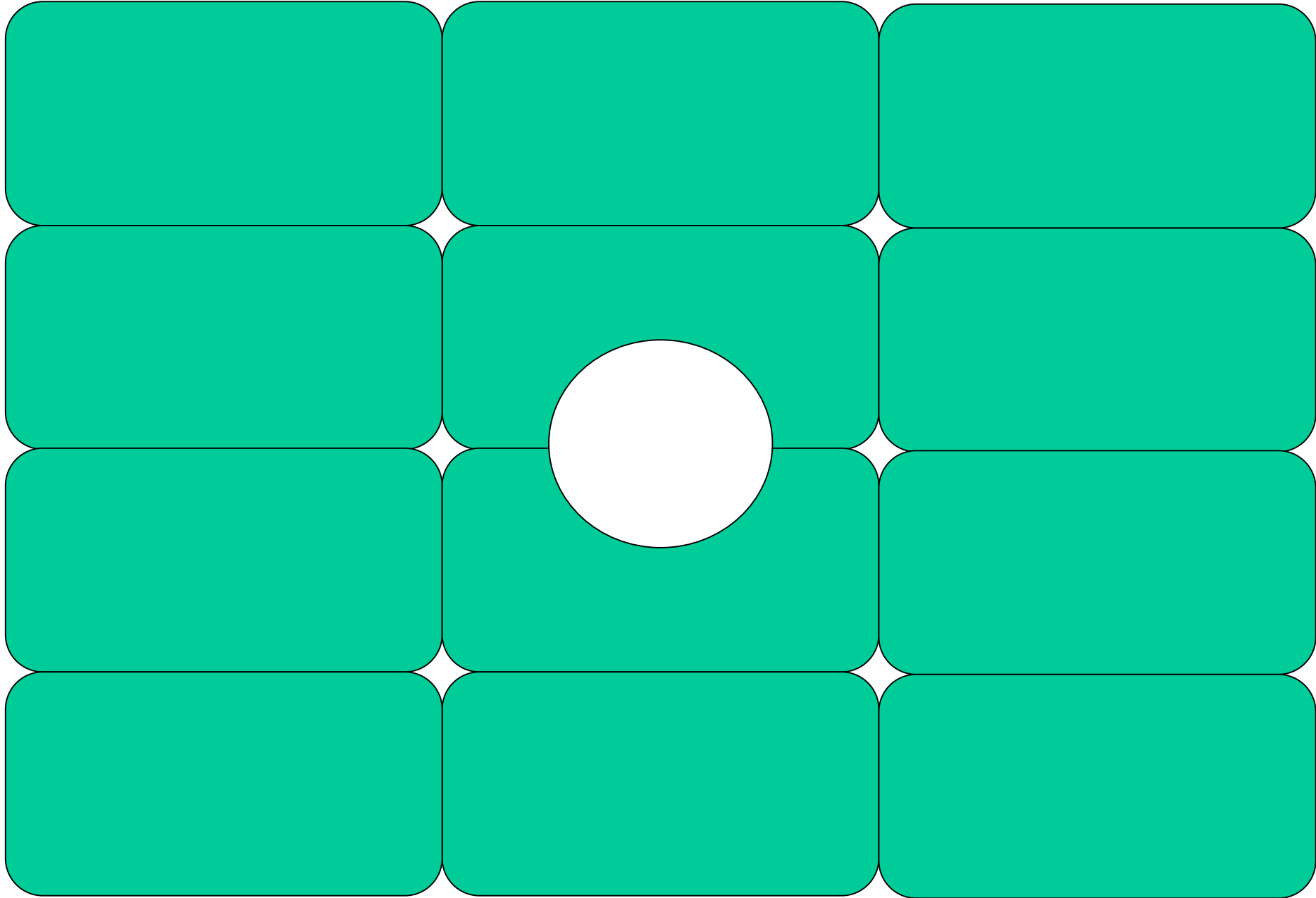
Ferns



Cycads

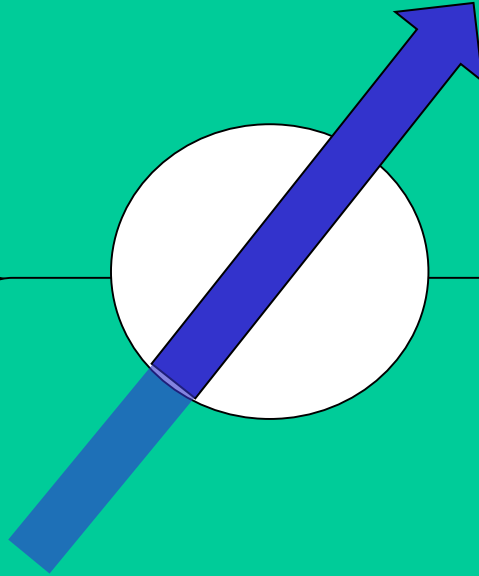


Cycads



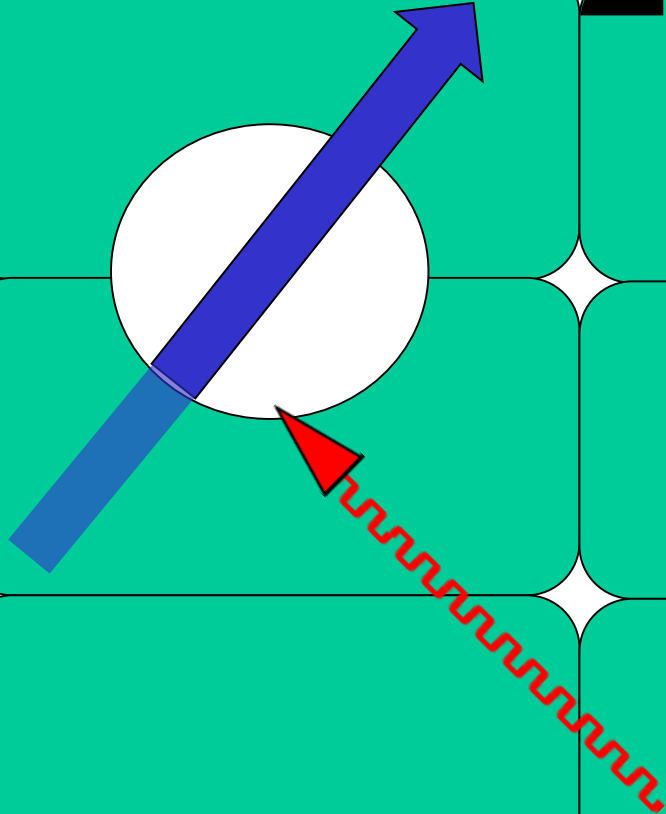
Cycads

H_2O

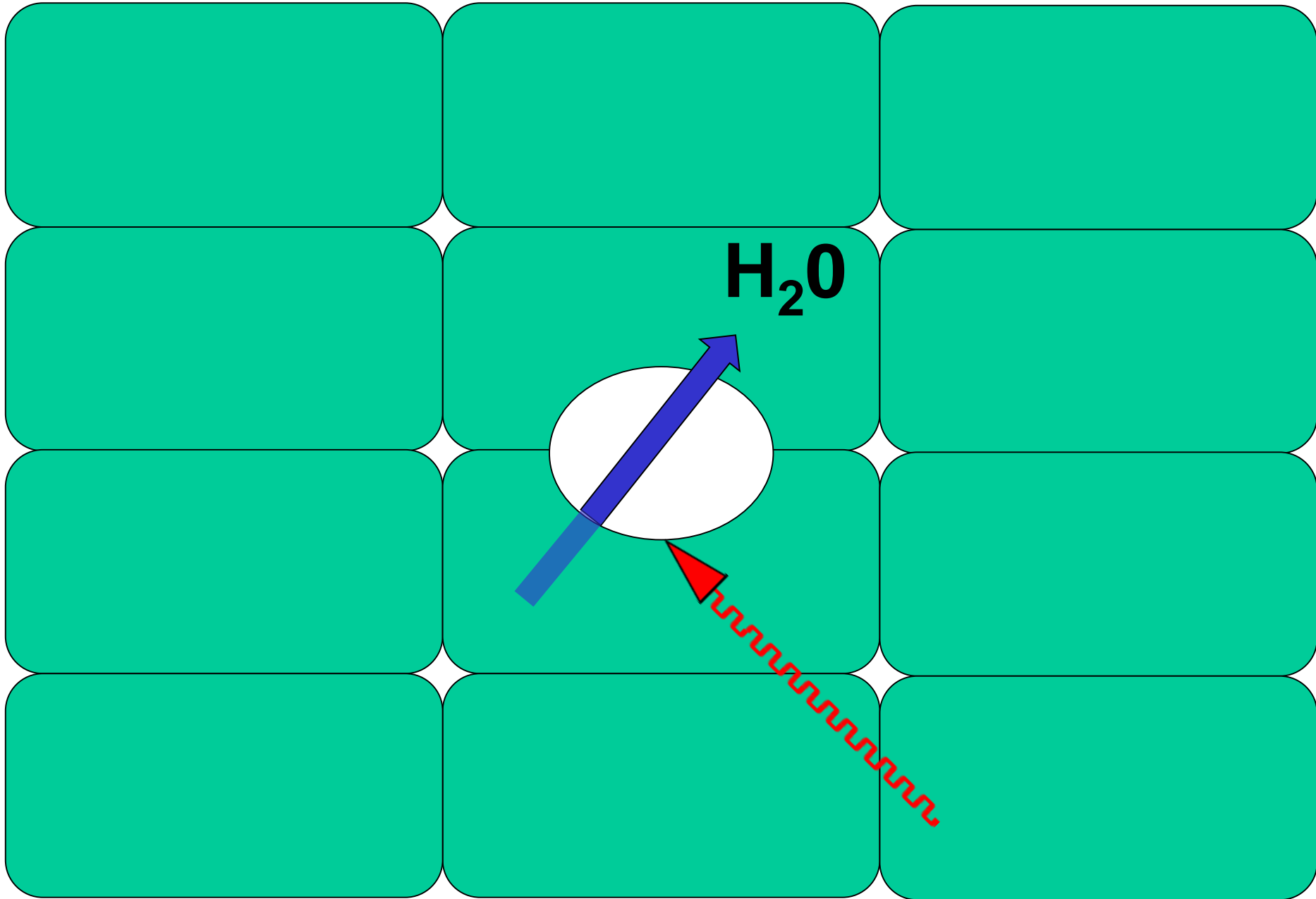


Cycads

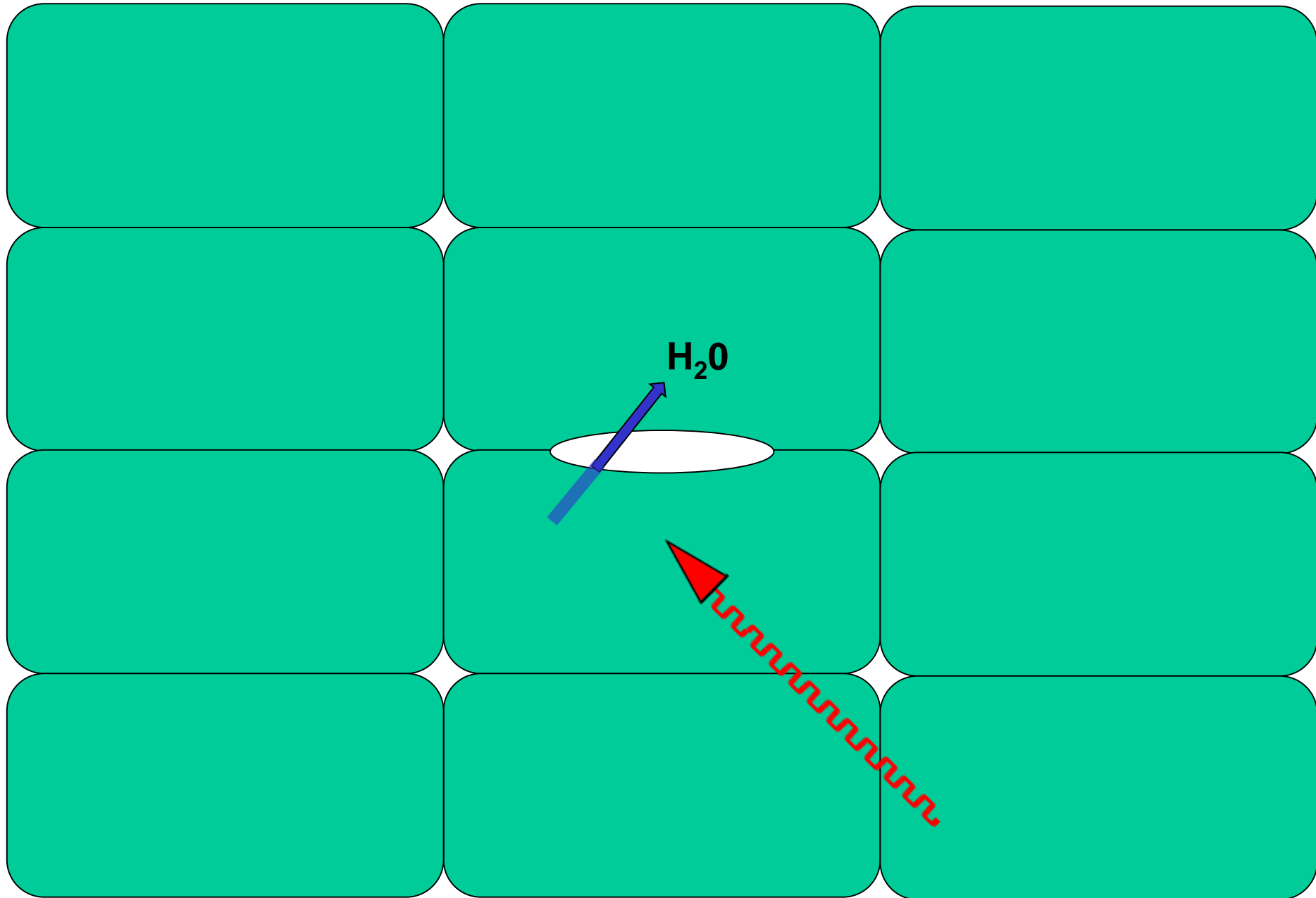
H_2O



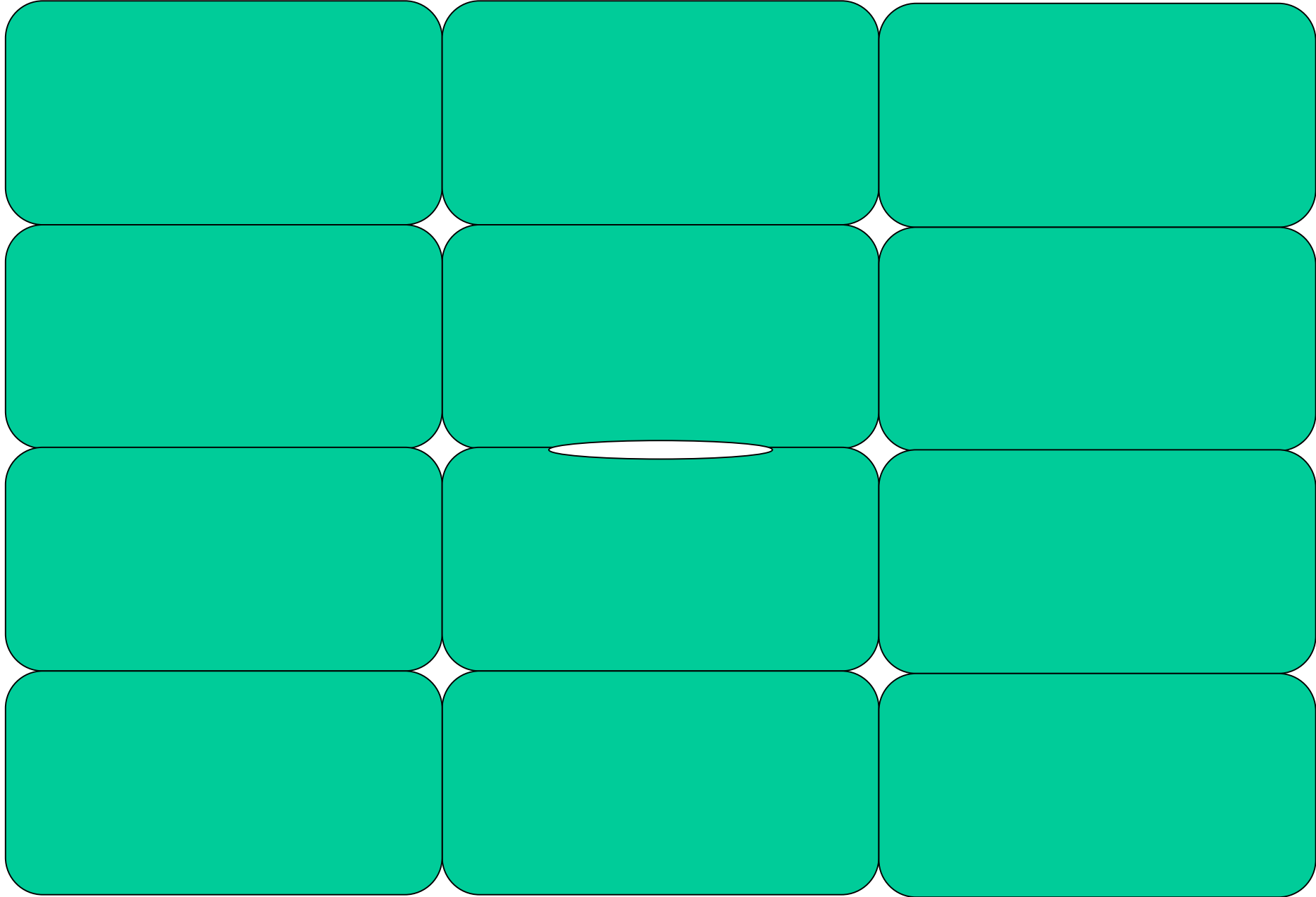
Cycads



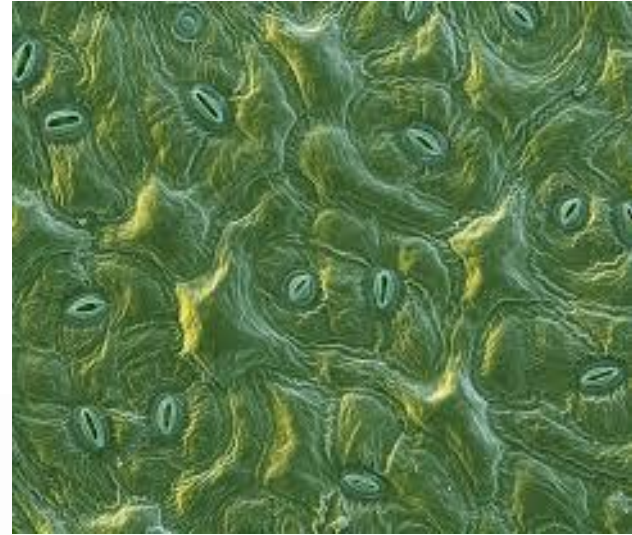
Cycads

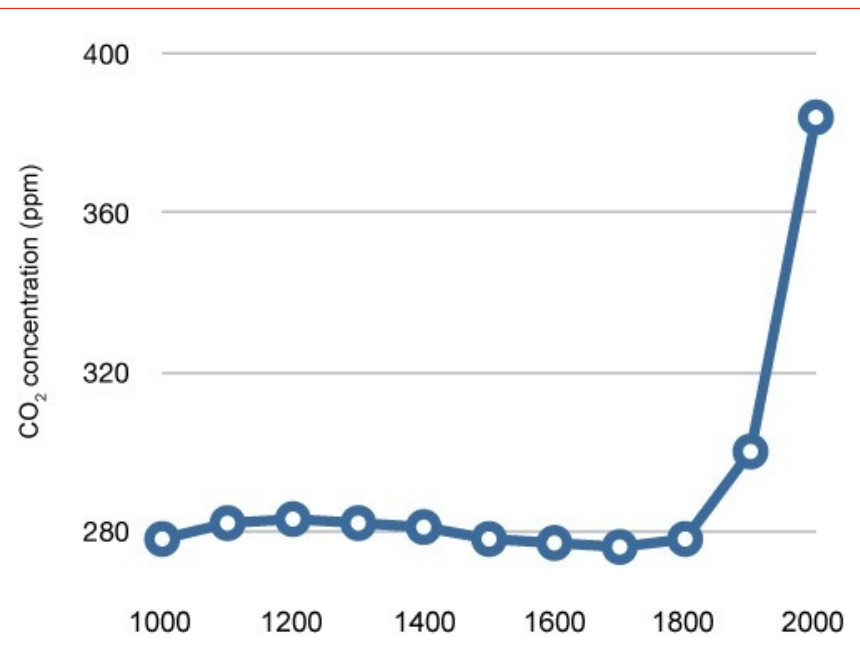
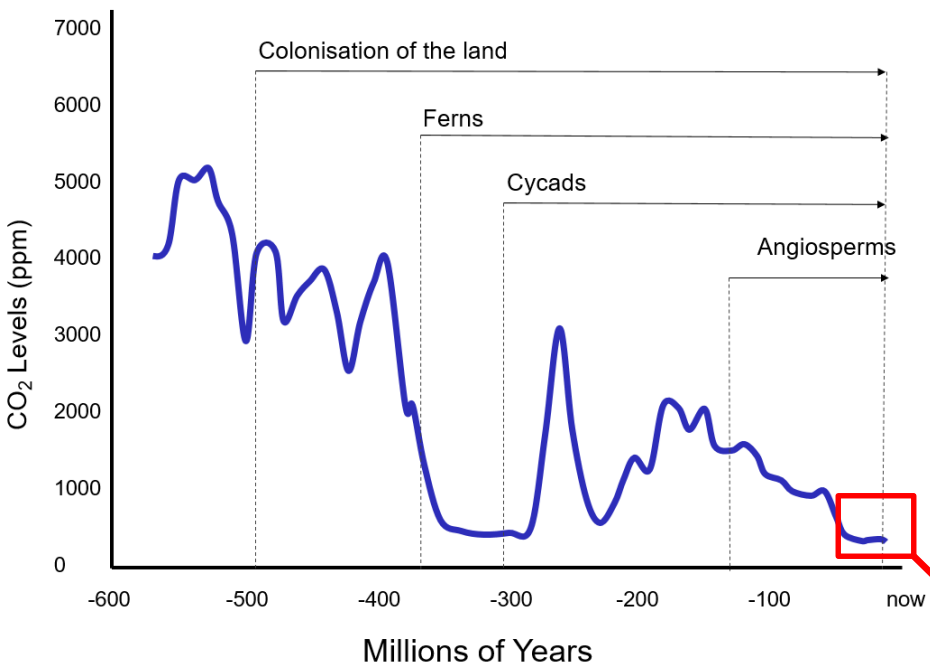


Cycads

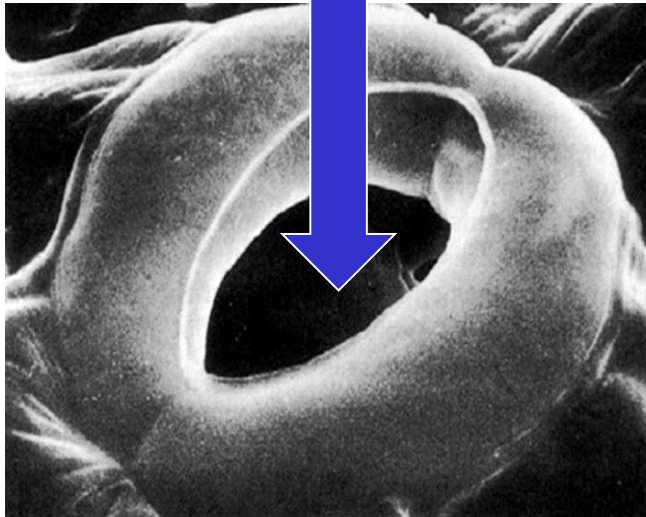


Flowering plants





CO₂



Sugar

CO₂ can be good for plants



+ TATE LYLE
CANE sugar

BY APPOINTMENT
TO HER MAJESTY
THE QUEEN



TATE & LYLE PLC
LONDON
SUGAR REFINERS

+ TATE LYLE
CANE sugar[®]



GRANULATED

1kg e

Each 4g teaspoon contains

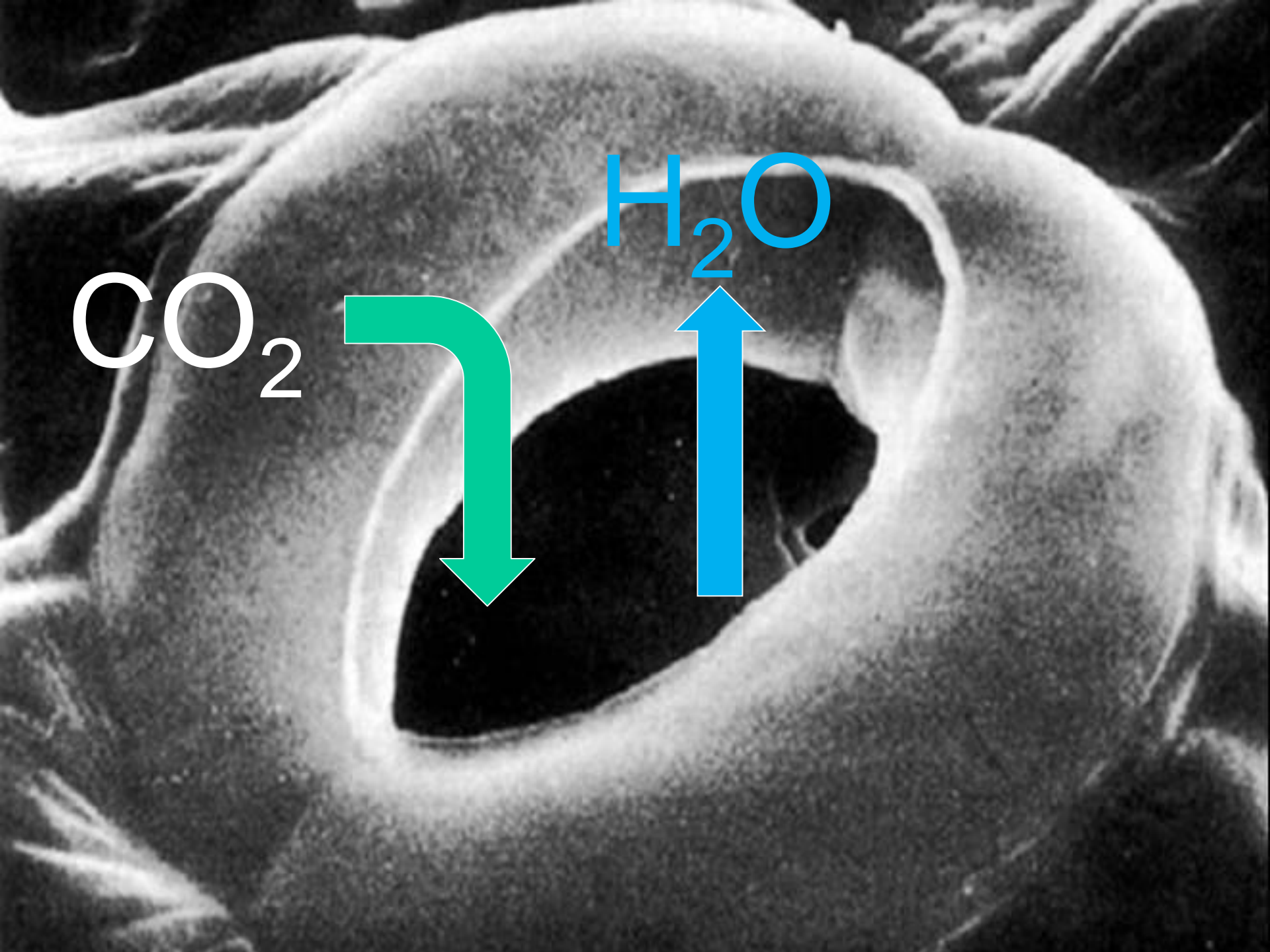
Calories	Sugars	Fat	Saturates	Salt
16	4g	0g	0g	0g
<1%	4%	0%	0%	0%

of an adult's guideline daily amount

NUTRITION

PER 100g	PER TEASPOON (4g)
Energy	1600kJ / 380kcal
Carbohydrate	99.3g
- Sugars	4.0g
Protein	0.1g
Fibre	0.1g
Salt	0.0g

*% Daily Values are based on a diet of other people's secrets.



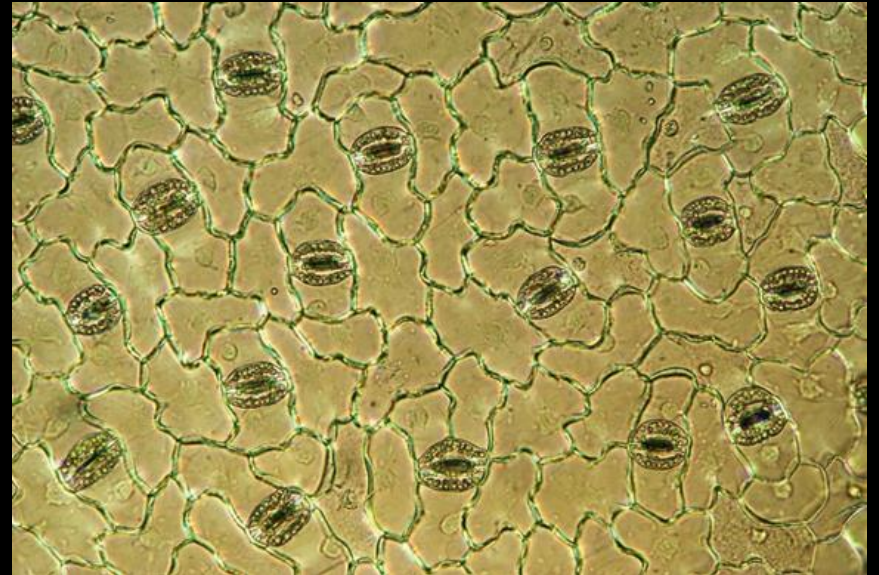
CO_2

H_2O

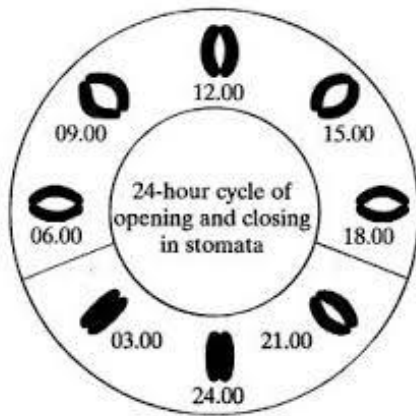
Minutes



Millennia

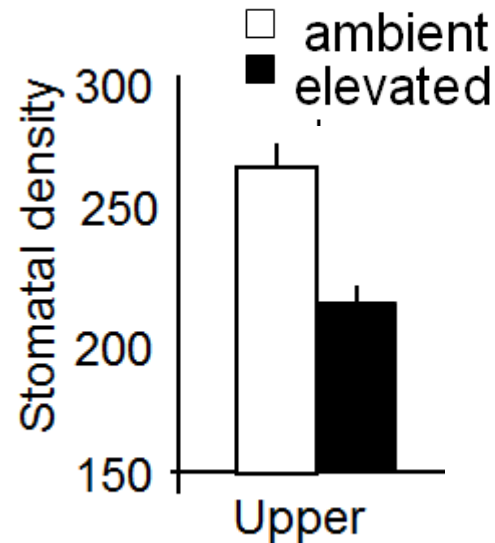


Hours



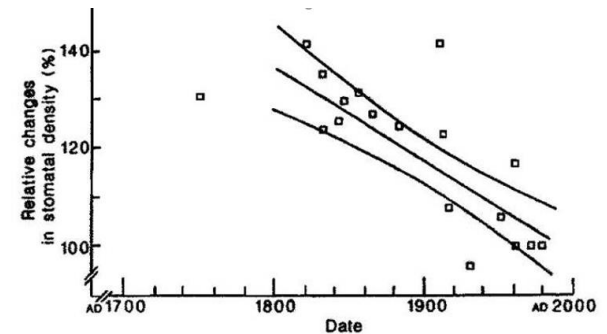
Stomata close at night

Weeks



Stomatal density decreases under elevated CO₂

Centuries



Stomatal density has decreased over climate change



CO₂



Carbon

Stomata?

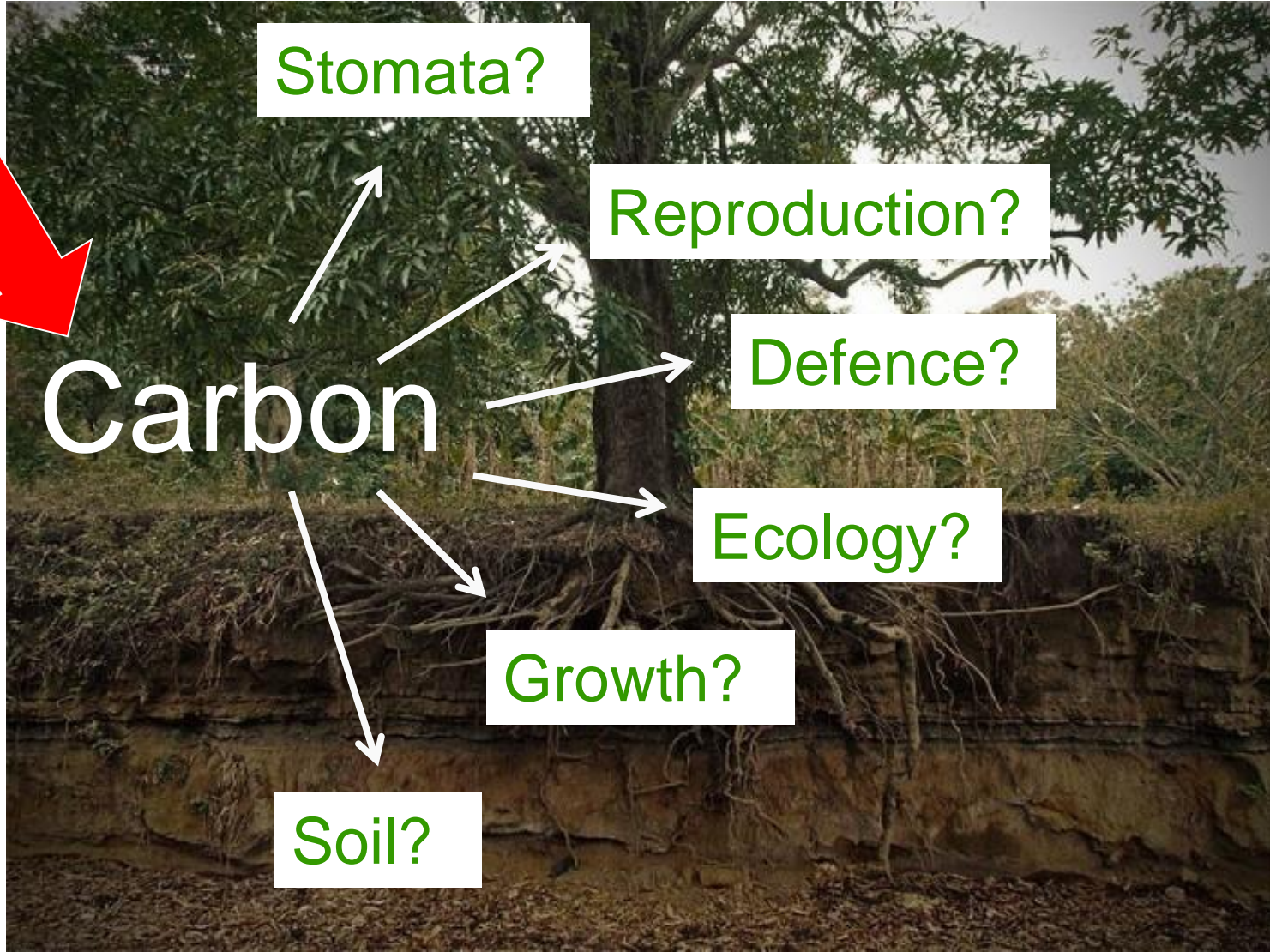
Reproduction?

Defence?

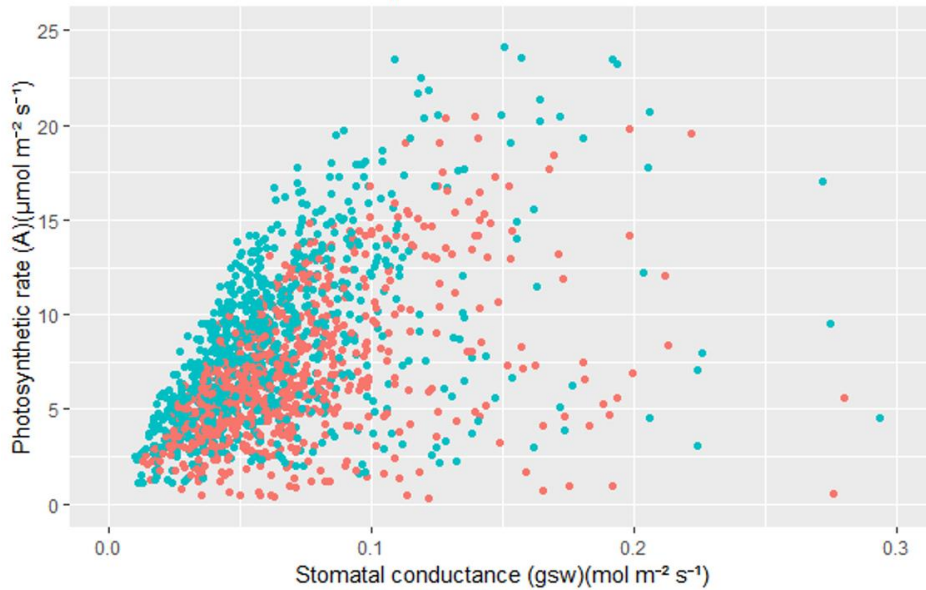
Ecology?

Growth?

Soil?

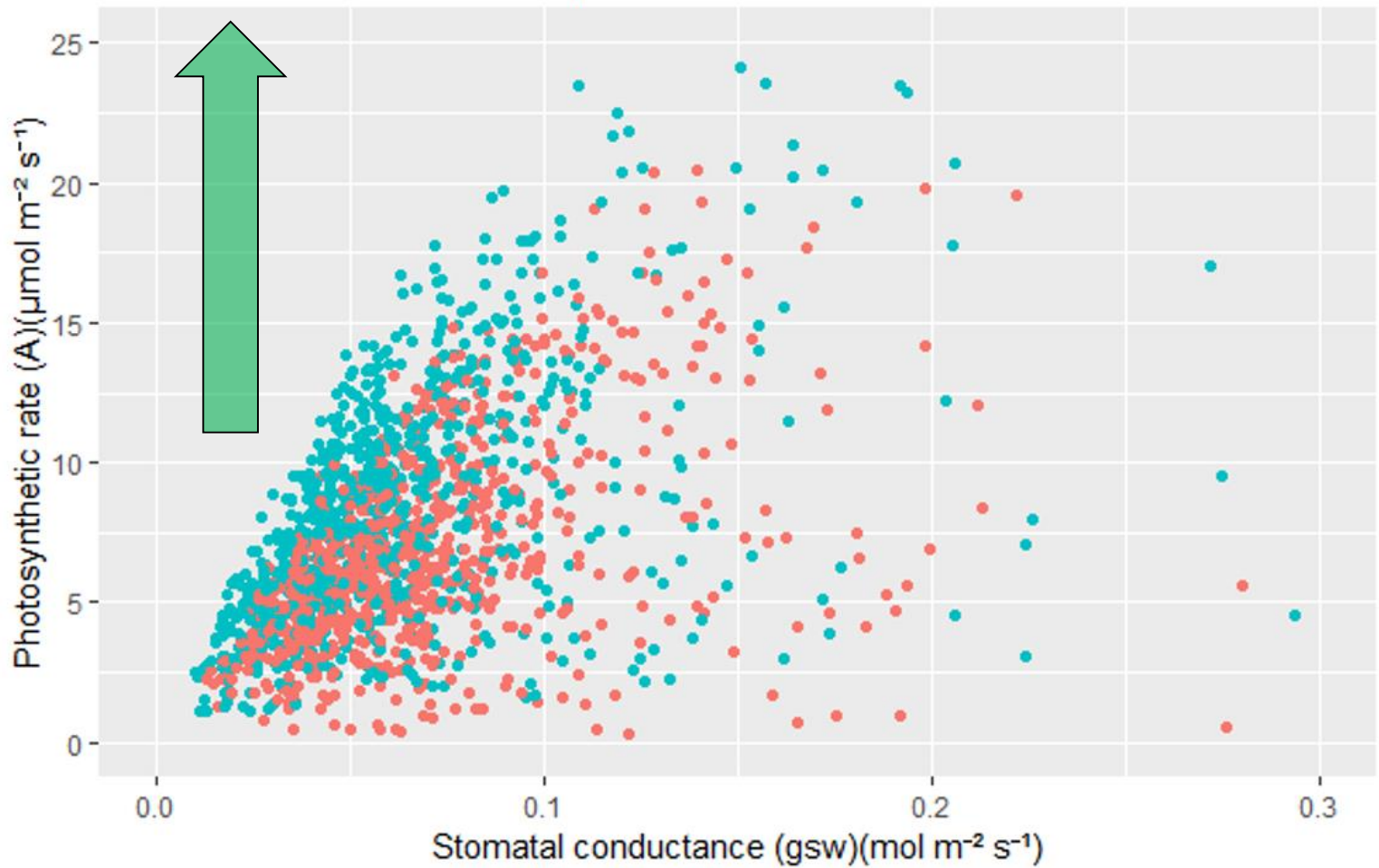


Breaking news: Early data



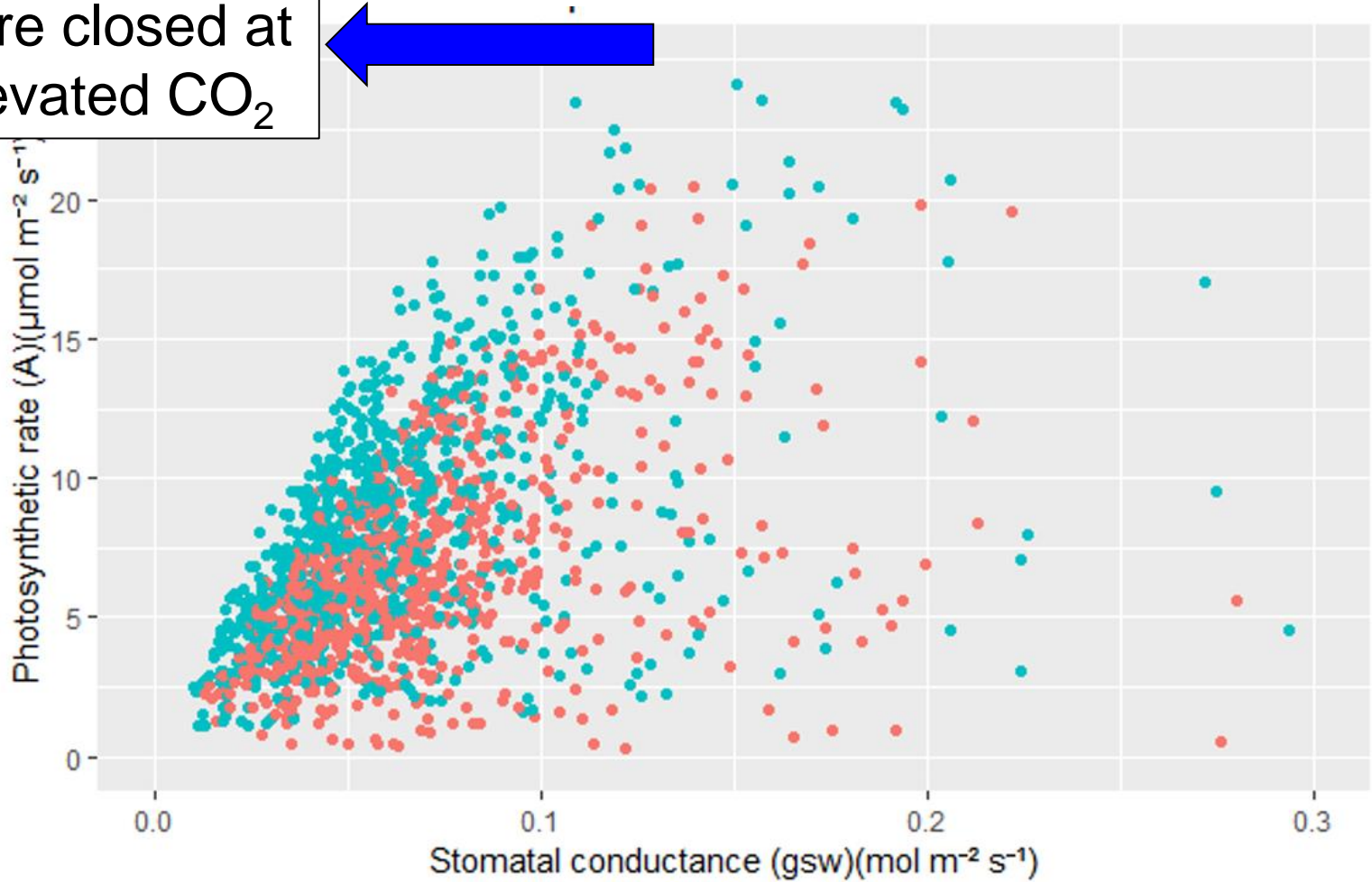
Anna Gardner BiFor PhD

Photosynthesis is
higher at elevated
 CO_2



Anna Gardner BiFor PhD

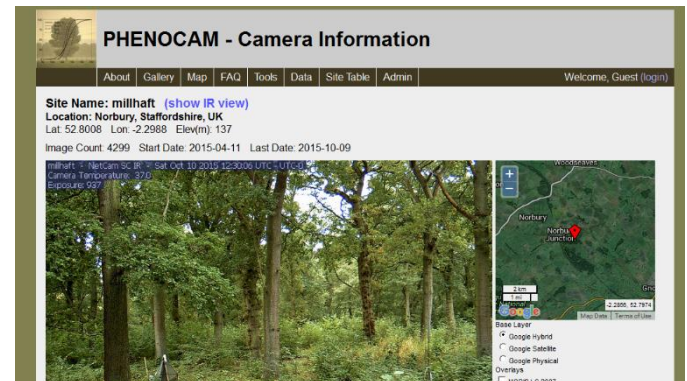
Stomata are
more closed at
elevated CO_2

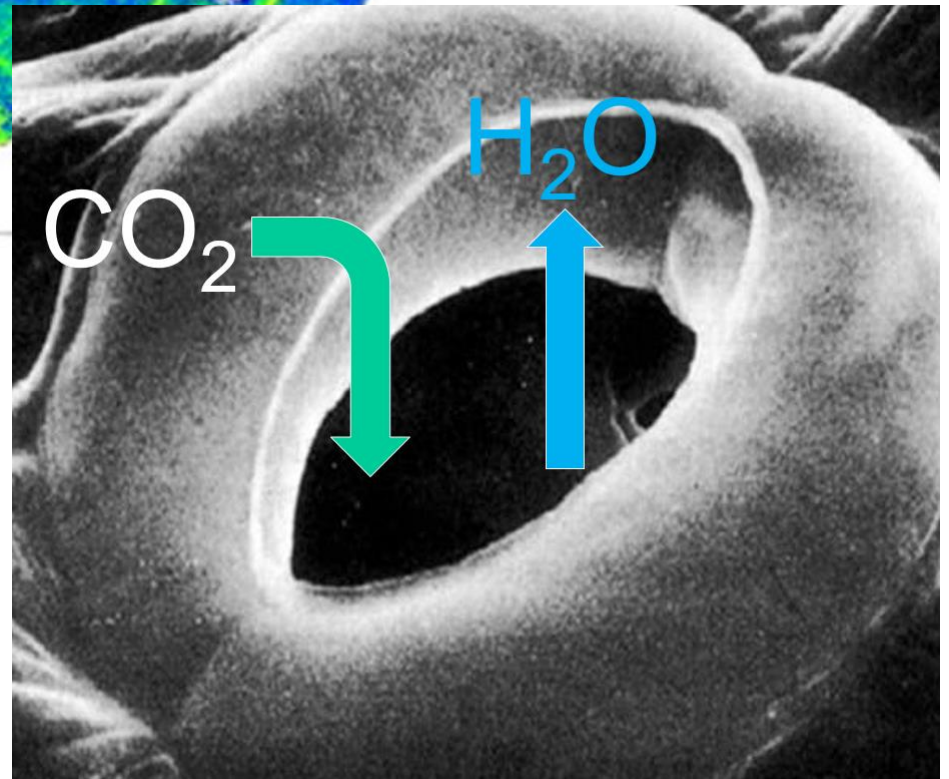
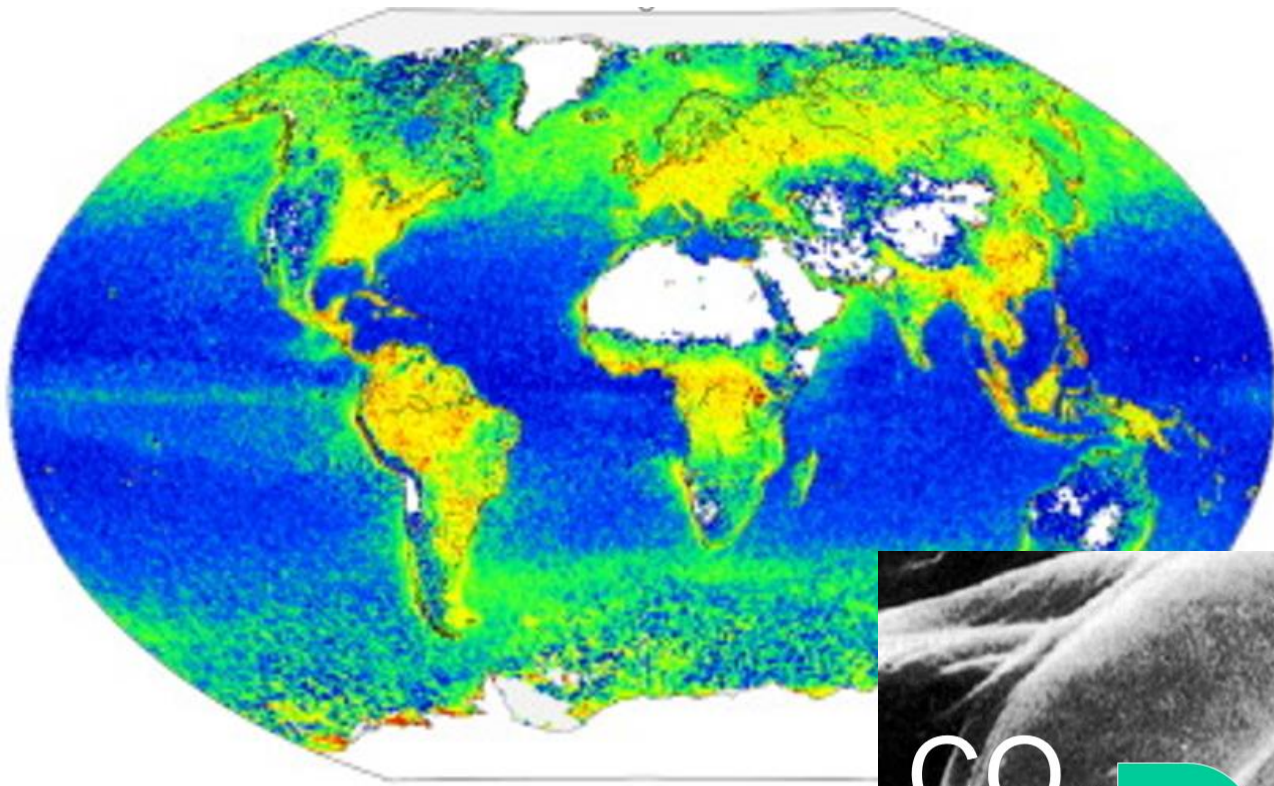












- Plants have breathable waterproofs
- More CO₂ doesn't always mean better plants
- FACE gives us new data to predict climate change

U



B

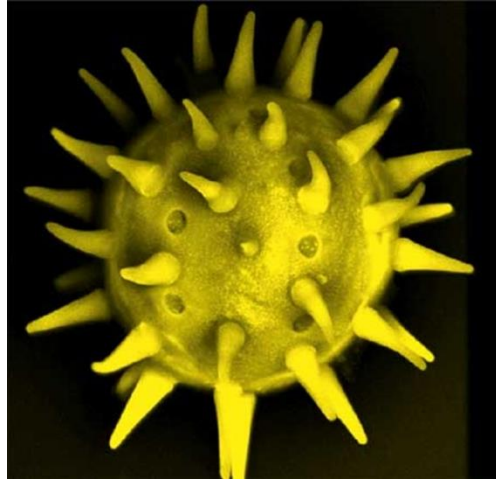
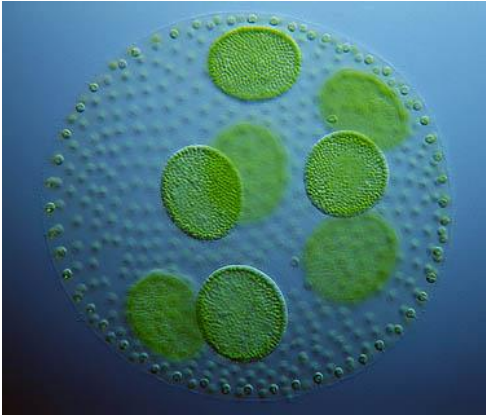
Professor Jeremy Pritchard
[@DrJPritchard](#)

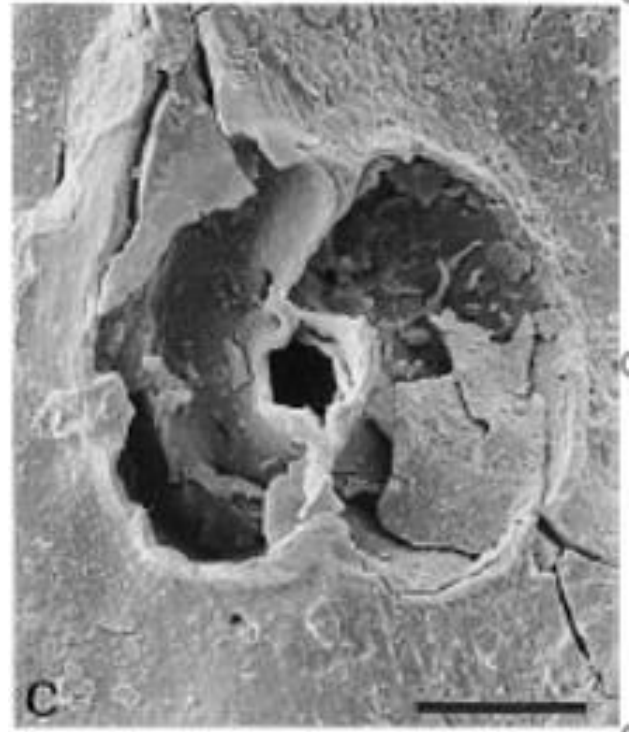
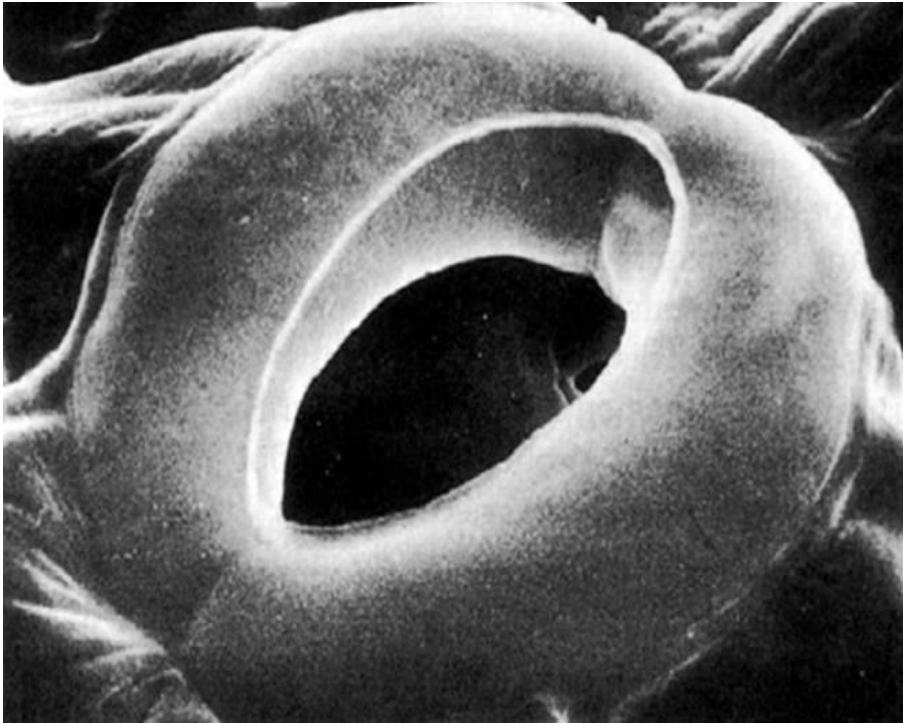
UNIVERSITY OF
BIRMINGHAM

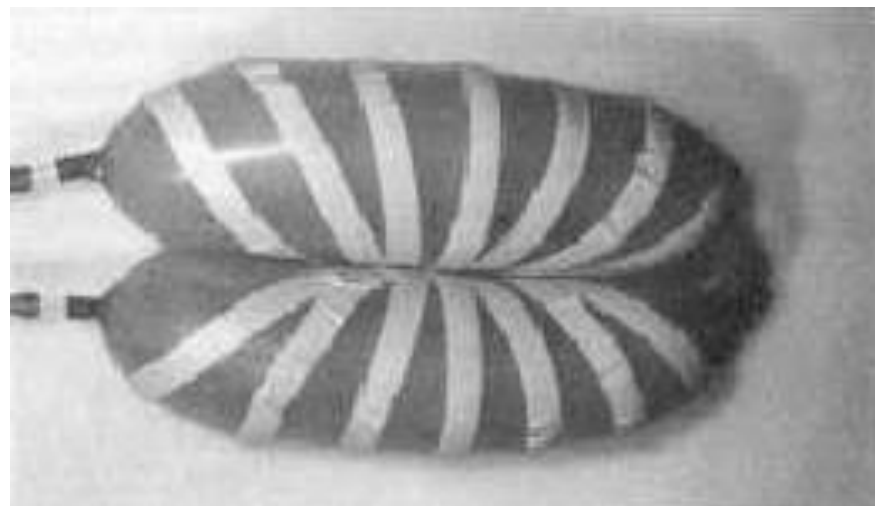
BIFOR



Thank you....







Annual increase
in area (Biomass)

Ring width

