

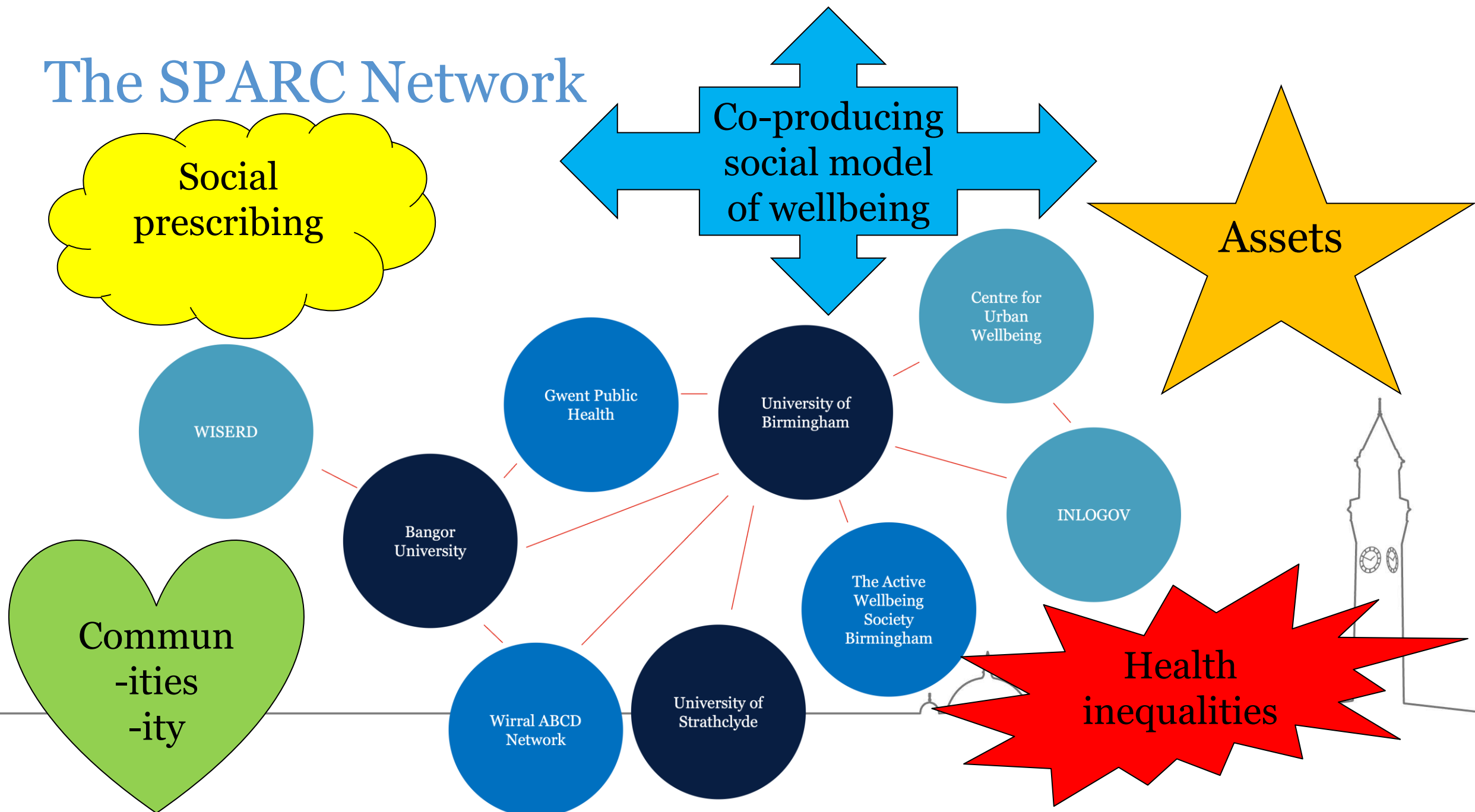


UNIVERSITY OF  
BIRMINGHAM

# Social Prescribing, Assets and Relationships in Communities (SPARC) Network: Co-producing a Social Model of Wellbeing



# The SPARC Network



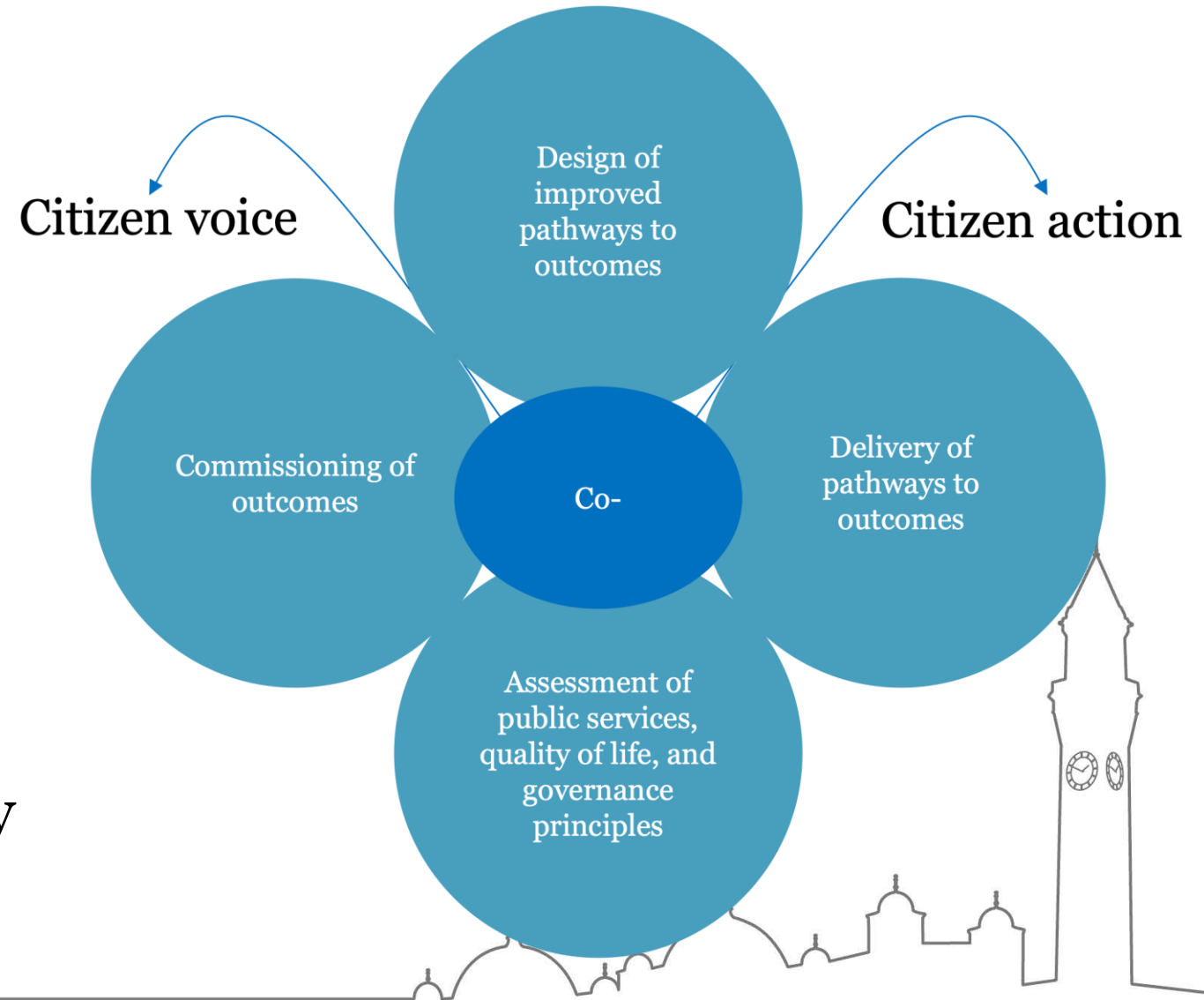
# Social Prescribing (SP)

- A new way to address (wider determinants of) health (inequalities)
- From **medical model of health** to **social model of wellbeing**
- Systems change inhibited by structural barriers to co-production and evaluation



# Coproduction

- At the heart of SP, but limited perspective looms
- Co-producing SP as a form of social innovation
- Many structural community and organisational barriers



**Four Co's framework (Loeffler, 2021)**

# Evaluation

- Dominant focus of medical model on individual or population level
- Need to capture personal and community dynamics and benefits
- Relational, complexity-oriented and action research approach

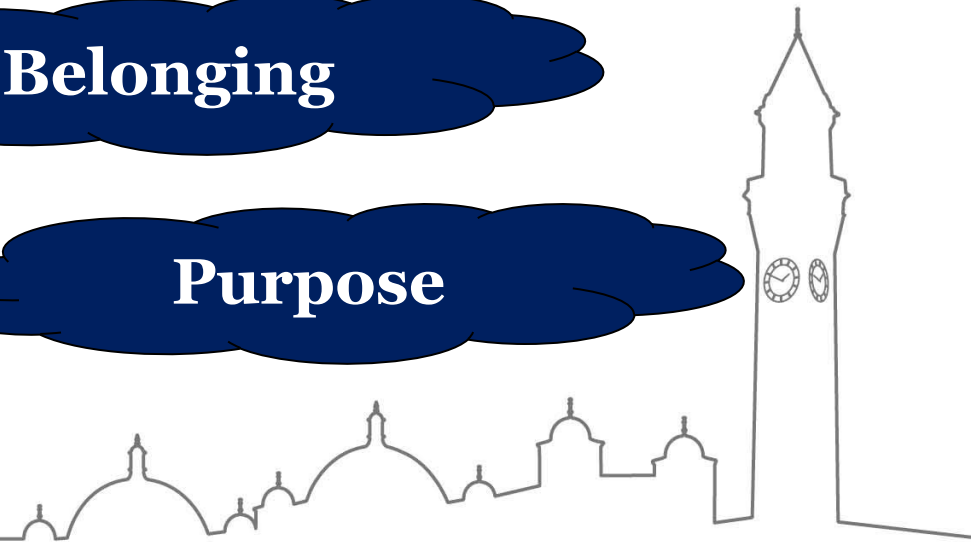
**Trust**

**Connectedness**

**Social capital**

**Belonging**

**Purpose**



# Asset-based action research

**1. A shared commitment to community-driven collaboration and change**

**2. Inclusion of community groups is at the heart of the process**

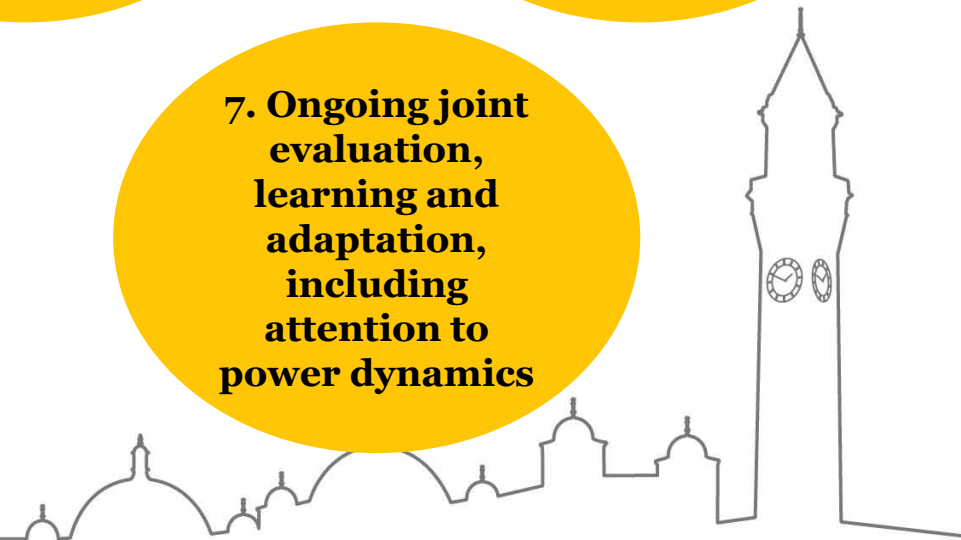
**3. Asset mapping**

**4. A common vision of what interventions will achieve and how**

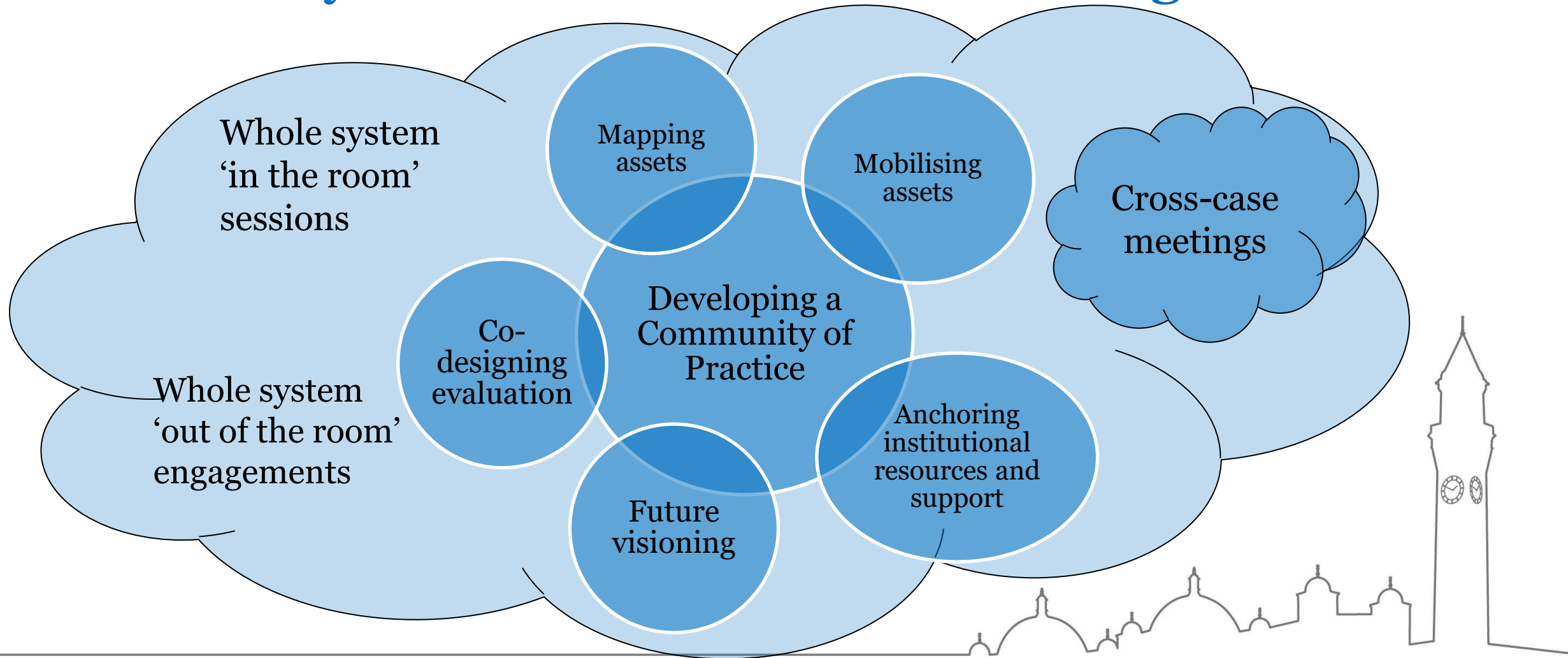
**5. Ongoing engagement with those in positions of power and resource**

**6. Inter-organisational collaboration that positively addresses anxieties and resistances**

**7. Ongoing joint evaluation, learning and adaptation, including attention to power dynamics**



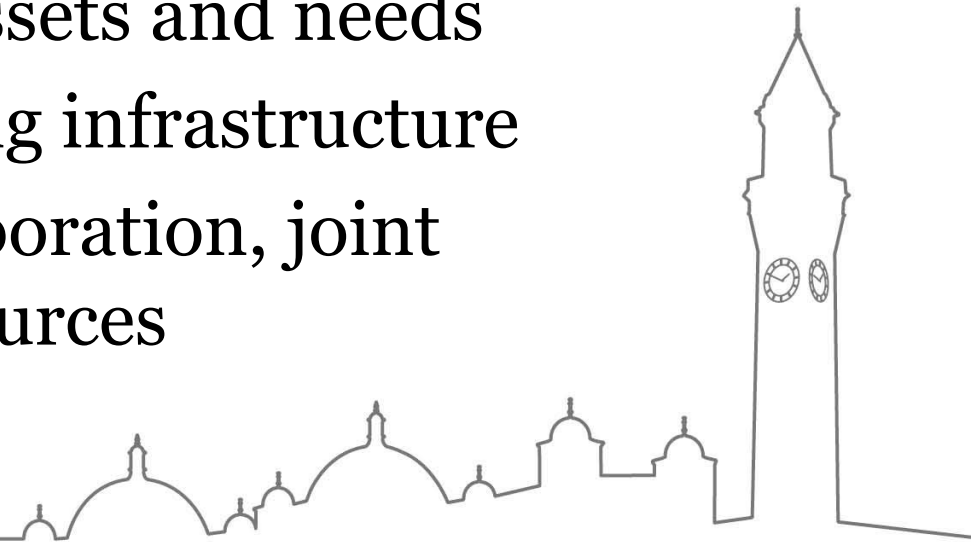
# Community-driven research and learning



# Systems change and partnering

## **Asset-based action research to co-produce a social model of wellbeing:**

- a shared practice driven by community assets and needs
- a community-driven research and learning infrastructure
- an ecosystem of community-driven collaboration, joint inquiry, and responsive institutional resources







UNIVERSITY OF  
BIRMINGHAM

# Connect

[SPARC LinkedIn Group](#)

**Lead: Koen Bartels – [k.p.r.bartels@bham.ac.uk](mailto:k.p.r.bartels@bham.ac.uk)**

