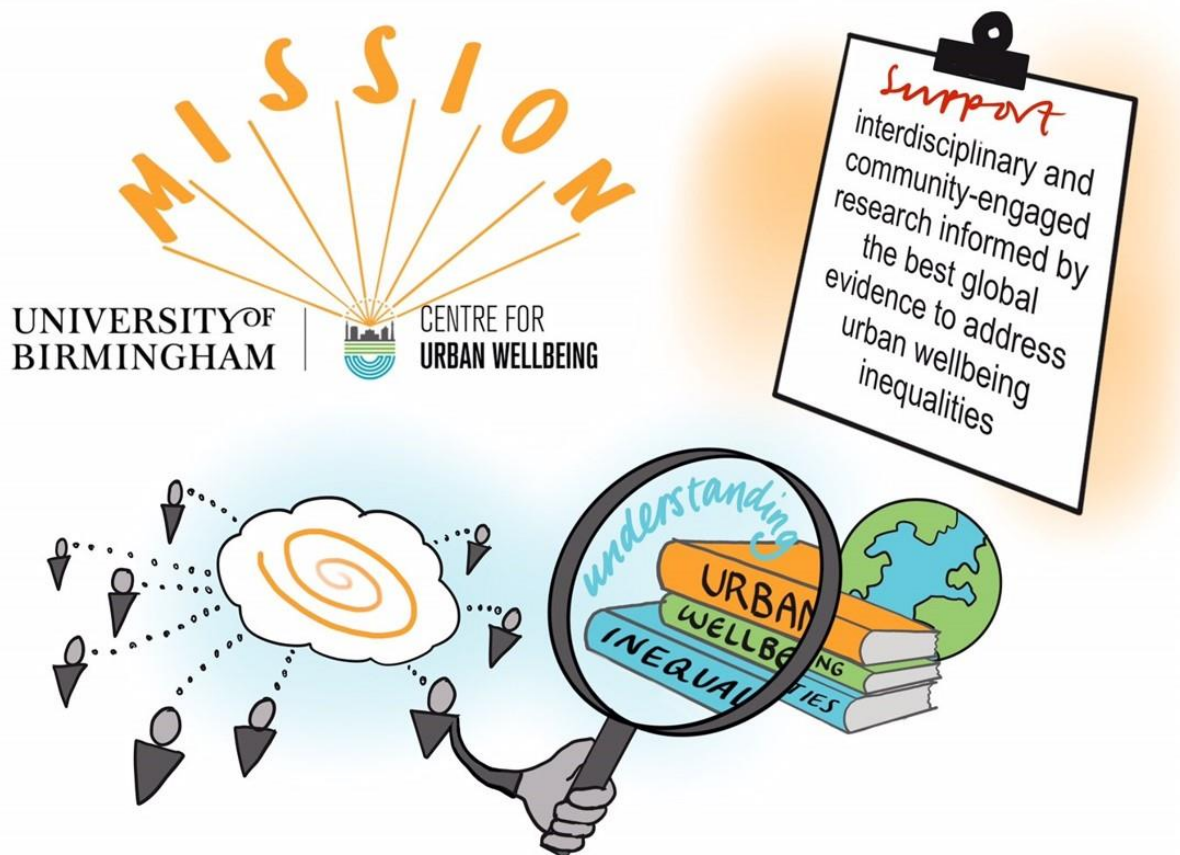


## Strategy 2022-2027 Summary

***Strengthening collaboration, supporting  
more equal places***



## Our goals

- 1 Produce insight on the multi-dimensional characteristics of wellbeing
- 2 Advance understanding of local and global conditions needed for people to thrive
- 3 Shed light on community approaches to addressing wellbeing inequalities
- 4 Create new knowledge on urban wellbeing through creative dialogue across disciplines
- 5 Engage with policy makers to enable co-produced research which can influence urban wellbeing strategies



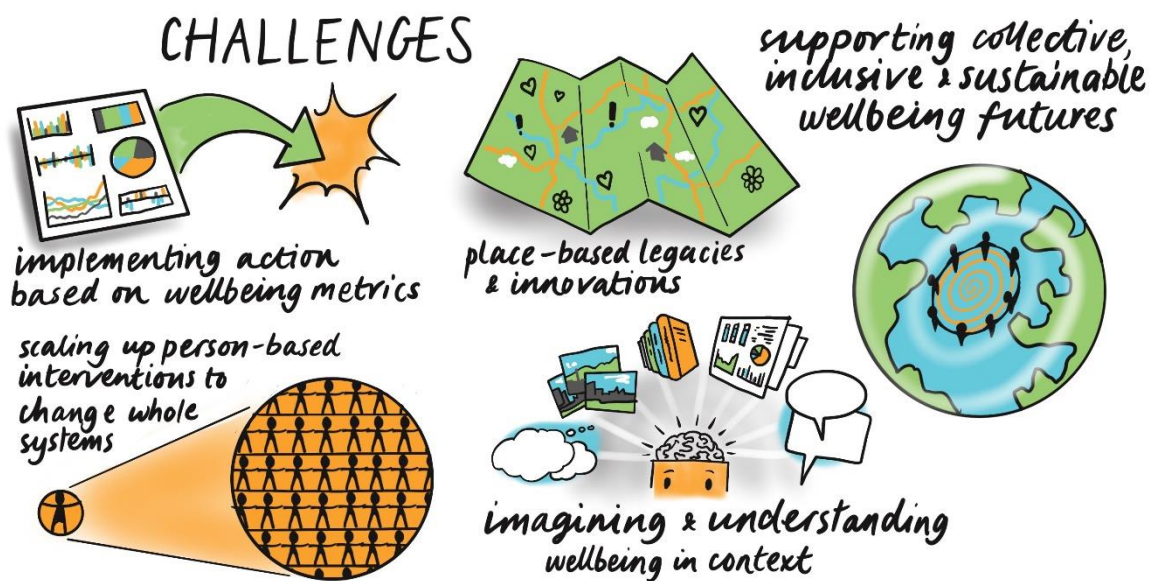
## Our areas of research

### RESEARCH THEMES



## Responding to urban wellbeing inequalities: the key challenges for research

We have developed a distinctive approach to understanding how wellbeing is experienced, practiced and shaped. We treat wellbeing not only as property of individuals, but of publics, places and communities, and that our research is aimed at involving people in both advancing understanding and shaping the cities in which wellbeing is experienced to make places which are more equal.

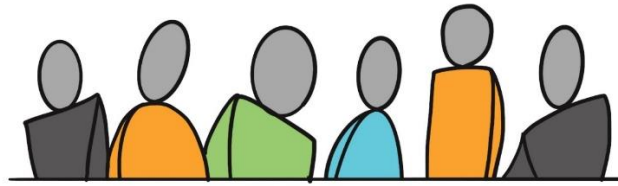


## Our approach

*What is urban wellbeing?*



# RESEARCH PARTNERS



## Who we partner with

- Local authority managers and cabinet members (e.g. climate change, public health, planning, communities, sustainable finance),
- Community and voluntary sector leaders (e.g. social enterprises, research foundations)
- National and Regional government departments' scientific advisors and knowledge networks

*“The Centre is open to new ways of working – this means recognising the value of co-production and resourcing contributions from research participants and partners”* Victoria Boelman, Research Director, The Young Foundation

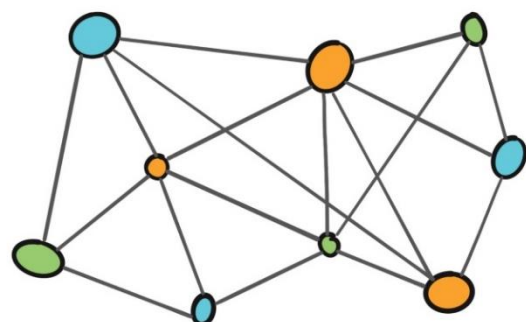
- Global business organisations and initiatives promoting sustainable, equitable and healthy cities

## How we work with partners

To capture ‘whole-system’ expertise and knowledge, more participatory and empowering approaches are needed. We have experience in action research, community engagement approaches, and diverse forms of research evaluation:

- co-production
- Deliberative policy analysis
- Social innovation research
- service-user journeys
- asset-based community development
- policy engagement
- design and participatory techniques
- Participatory, realist, reflective and process evaluation techniques
- secondary analysis of large datasets
- trial design and evaluation
- qualitative interviews and focus groups

### How we work





## Our Values



## Our Sustainability Commitments

We aim to shape healthy and accessible living environments which improve mental wellbeing and social interaction.

We seek more equitable cities in which opportunities, places and spaces are available to all.

We see evidence, understanding and imagination as key for environmental and economic justice.

We encourage responsible forms of consumption and production to enhance our environments and wellbeing.

These goals require strong civic institutions, acknowledgement of interdependence, and global commitments to tackling injustice, inequalities and poverty.



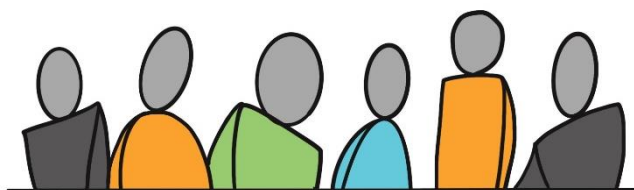
## Get involved

If you are interested to find out more about the Centre for Urban Wellbeing, to be updated about or activities, attend an event or partner on research, then we have the following opportunities:

- collaborate on research funding bids
- join as an academic associate
- apply to become a policy fellow
- apply to be a visiting fellow for 3 months or 1 year
- offer a student placement at your organisation
- subscribe to our [monthly newsletter](#)



## Contact details



Email: [urbanwellbeing@contacts.bham.ac.uk](mailto:urbanwellbeing@contacts.bham.ac.uk)

Website: <https://www.birmingham.ac.uk/research/centre-urban-wellbeing/home-page.aspx>

Blog: <https://blog.bham.ac.uk/cuwbb/>

LinkedIn: [Jessica Pykett](#) | [Laura Kudrna](#) | [Koen Bartels](#) | [Afroditi Stathi](#) | [David James](#)

## Credits

Illustrations by [www.thinkbigpicture.co.uk](http://www.thinkbigpicture.co.uk) @laurabrodrick