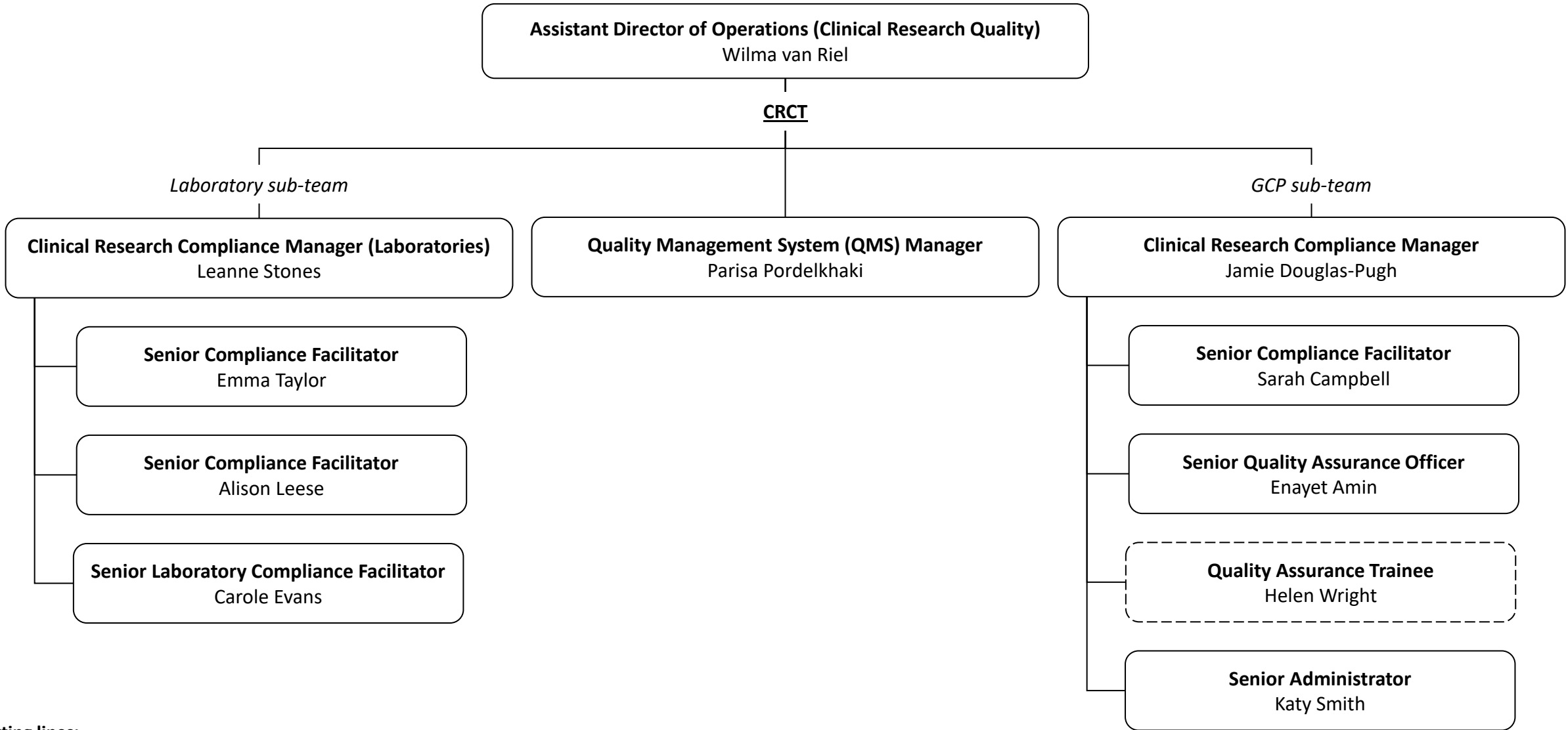


Clinical Research Compliance Team (CRCT)

CMH Research & Knowledge Transfer Office



Reporting lines:

- The Laboratory sub team reports to the Human Tissue Oversight Committee (HTOC)
- The GCP sub team reports to the Clinical Trials Oversight Committee (CTOC)
- Both oversight committees report to the Research Governance, Ethics and Integrity Committee (RGEIC)