

# Co-operative Housing in Birmingham

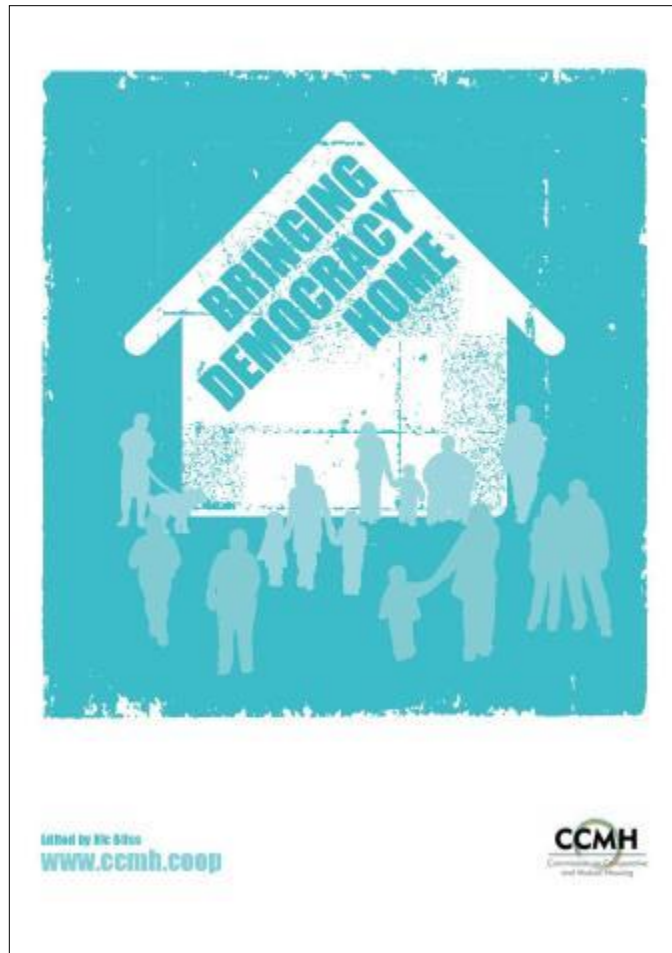
Blase Lambert  
CCH Chief Officer



# The Confederation of Co-operative Housing

- The representative body for co-operative and mutual housing in UK since 1992
- Aims and objectives:
  - ✓ Work with key partners to promote viable forms of co-operative housing and to lobby for our sector
  - ✓ Assist our members to enhance their governance and deliver excellent services
  - ✓ Provide networking opportunities to our members and supporters
- 185 members ranging from 1 home to 13,500 homes
- Growing the sector in the UK
- Co-operative Housing International

# Commission on Co-operative & Mutual Housing



# The Rich Mix of Co-operation

- Fully mutual ownership co-ops (rental)
- Management co-ops
- Community gateways
- Community custom (self) build
- Co-housing schemes
- Community land trusts
- Mutual home ownership
- Shared ownership
- Student co-operatives
- Self financing, debt and grant or partnership working



# Case Studies and Examples

Wales Co-operative Centre

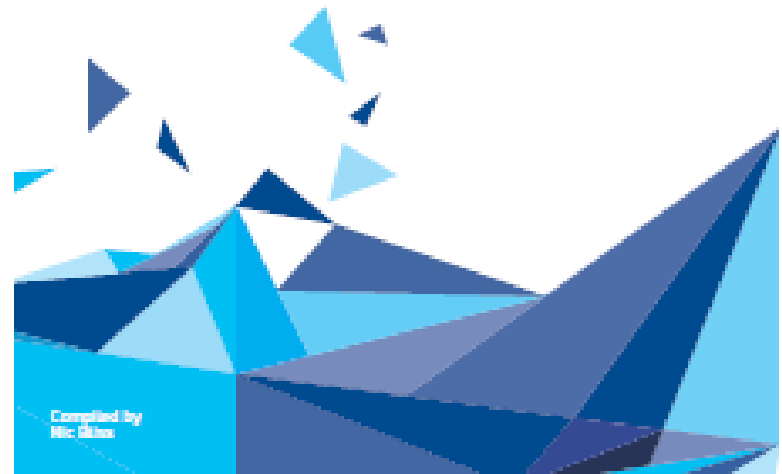
**CCH**  
The Confederation of  
Co-operative  
Housing



Co-operative  
housing –  
for any community  
in Wales



## 1,001 co-operative and community-led homes: the housing revolution starts here



Compiled by  
Nic Glynne



Wales Co-operative Centre  
Canolfan Cydweithredol Cymru

# Redditch Co-operative Homes

**Accord Housing Association**  
(Finance & Development)

Development, Corporate  
& Financial Services  
Agreements

**Redditch Co-operative Homes**  
(Management Services)

7 year lease &  
Management  
Agreement

**Neighbourhood Co-ops**  
(Local Scheme Management)

- Partnership between Accord Group and Redditch Borough Council
- Financed and developed through Accord (which retains freehold)
- Long lease to intermediary (RCH)
- Shorter leases to local management co-operatives

# The Role of Birmingham City Council

- Develop a strategy for enabling all 3 routes to delivering community led housing are viable (new start ups, existing organisations and developer led partnerships)
- Support a regional hub to support the growth of the sector
- Identify sites that would lend themselves to community led approaches – do not see it as an option of last resort where everything else has failed!
- Actively promote options for community led housing to communities including in existing housing stock as well as new build and refurbishment
- Ensure that Councillors and Council employees are trained and knowledgeable regarding community led options

Blase Lambert  
Chief Officer  
Confederation of Co-operative Housing  
07940 448014  
[blase@cch.coop](mailto:blase@cch.coop)  
[www.cch.coop](http://www.cch.coop)

