

HOSTED BY:

 UNIVERSITY OF
 BIRMINGHAM

 UNIVERSITY OF
 Southampton

CONTENTS

Research Areas	2
Capacity Building Clusters	4
Knowledge Exchange	5
Statistics	5
Publications	6
Staff Team	7
Advisory Board	8
Reference Groups	9
Forward Priorities	10
Key Achievements	10
Role of TSRC	10

Funded by:



Annual Review

2008-2010

Executive Summary

TSRC's first Annual Review covers the work of the Third Sector Research Centre since its inception in September 2008, and over the last financial year from 1 April 2009 to 31 March 2010.

Much of the first six months has been focused upon establishing the Centre's structure, recruiting staff and networking with stakeholders. One of the major aims of this phase of establishment was the creation and implementation of extensive governance relations to ensure that TSRC is able to engage appropriately with the wide range of research users who have an interest in our work. The formal elements of this are listed on pages 8 and 9 of this Review. They include our Advisory Board, and the Reference Groups which are linked to various aspects of our rather complex and extensive research programmes. They also include our plans to engage with, and research on, the devolved administrations in Scotland, Wales and Northern Ireland.

Although part of our funding comes from the Office of the Third Sector, which is an English Department; we have been established as a UK research centre and we are keen to ensure that we develop a critical understanding of the development and impact of devolved third sector policy and practice in the different nations. We are also working closely with academic and other colleagues in the three countries to promote and support the development of related research activity in, and on, those countries.

The Centre currently has 21 full

time equivalent research staff who are working on a range of innovative projects. For example we are laying the groundwork for two exciting longitudinal projects which will track developments in the sector using qualitative and quantitative methods. The 'Real Times' project will follow a sample of third sector organisations over time using interviews and focus groups, while quantitative researchers will assemble a substantial panel of data from the Charity Commission's register since the early 1990s. This will be an unparalleled resource for analysing change over time.

We have also conducted scoping exercises designed to provide a review of the state of current research in specific areas (such as housing and social enterprise). As part of such ground-clearing exercises we have collated a large volume of research publications on the third sector; we are intending to preserve this and make it more widely available for public use through a partnership with the British Library, subject to the availability of funding.

These activities are necessary to establish firm foundations for a long-term research programme, but researchers are already in the field, generating new findings. To give just two examples we have been conducting (and will continue to conduct) interviews on the changing policy environment with policy-makers and senior stakeholders in the sector, while we are also engaged in 'micro-mapping' of small scale community organisations which are often neglected in studies of this sector.

The development and publication of Working Papers from our research is one of our core commitments. These are regularly uploaded onto our website along with shorter and more accessible Briefing Papers outlining key messages for a wider audience. We have already produced over 30 papers and many of these will also be developed into independent academic publications, as some already have.

The other major commitment in our first year has been the establishment of our Knowledge Exchange Team. This is a tangible expression of our commitment to engagement with a wide range of research users (including policymakers and practice). The team have already been active this year in setting up our website, developing our communications and impact strategy, and networking with stakeholders across the country.

We are also working with three Capacity Building Clusters to promote and support the building of capacity for the sector (see page 4 for their most recent achievements).

The long term aim of TSRC is to establish a permanent centre for academic research on the third sector in the UK. We are concerned to ensure that our research has a real impact on policy and practice. We believe that our first year of activity has seen us establish firm foundations for a long-term programme of high quality, influential and relevant research.

Pete Alcock, Director
John Mohan, Deputy Director

Funders' Comments

The Steering Committee, representing the funders, congratulate the team on the work undertaken in the first year; and are pleased with the significant progress that has been made in developing the research programmes, establishing the Knowledge Exchange Team and commencing the publi-

cation of a wide range of outputs.

They firmly support the Centre's work to establish an extensive and reliable evidence base for the sector.

They recognise the investment that has been made in this and are looking forward to the more de-

tailed analysis that will flow from this in the coming months and years. They are also pleased with the Centre's commitments to collaborate with other researchers in the field and to engage with research users and stakeholders across the sector.

Theory and Policy

The Theory and Policy work stream has developed a number of research projects over the first year of the Centre.

Four papers have already been published looking at devolution and divergence (2), theory and policy ideologies (13), strategic unity (24), and partnership and mainstreaming (32). Additional papers for publication and presentations include third sector organisations and public services by Pete Alcock for ESRC and the

value of volunteering in Europe in the noughties: what would Beveridge have thought? By Jeremy Kendall for an international conference.

The impact of the devolution of third sector policy development to the separate administrations in Scotland, Wales and Northern Ireland is a major feature of the new UK policy environment. Reference Groups have been recruited to support and advise on

research within the devolved administrations.

Research has commenced on the recession and the third sector, focusing upon the way in which practitioners and policy makers have responded to the recession in discourses on policy, planning, and implementation. Fieldwork based on documentary analysis and qualitative interviews for this has been completed. Analysis is underway and scheduled for completion by summer

2010. This is being followed by a similar project, adopting a comparable methodology, exploring the impact of the 2010 general election on policy discourse within the sector. The focus here is on the way in which leading third sector agencies have presented the sector in political debate and the extent to which this has been taken up as an election issue. Fieldwork for this has just commenced and is scheduled for completion in early autumn 2010.



Pete Alcock, Director TSRC, University of Birmingham presenting at the Directory of Social Change Conference. Picture courtesy of Charities Evaluation Service

TSRC has created an unrivalled British source of data with 1.7 million observations on its database

Evidence Review and Longitudinal Research 'Real Times'

Publication of summary papers from the initial evidence reviews will continue across research streams, including papers on the methodology behind literature reviews and the availability of quantitative datasets.

TSRC is exploring, with the British Library, mechanisms for making research material (references, original sources, summaries and reviews) available to the wider

research, policy and practice community. This will include a searchable library accessible through TSRC's website.

TSRC has developed an in-depth qualitative longitudinal study of third sector organisations 'Real Times'. The overall purpose of the study is to increase understanding of how third sector activity operates in practice, and whether and how it changes, over time, focus-

ing on fortunes, strategies, challenges and performance.

The research involves a range of data collection methods over successive waves of fieldwork over three to four years, with a diverse group of 16 third sector organisations. Most have agreed to participate and the first wave of fieldwork is in progress.

Mapping and Measurement

TSRC Deputy Director, John Mohan, University of Southampton has been leading the work to construct a very substantial database on the activities of registered charities which now covers the period 1995-2008.

There are approximately 1.7 million observations in this database (where one observation equals an identifiable charity reporting a valid income and expenditure figure for one year). This will permit a very sophisticated analysis of growth trends and of income concentration in the sector.

The only other substantial panel of this kind would be that established by CAF or Caritas but these contain only between 300 and 1,000 observations, typically for the larger charities. By contrast, in our panel, over 40,000 organisations appear continuously from

one year to the next throughout this period and this is much more representative of the sector as a whole.

A quarterly time-series of data from 1993-2009 on the size of the third sector workforce, from the Labour Force Survey has been developed and is already being used to investigate the changing composition of the workforce. A similar series from 17 years of the British Household Panel Survey has also been constructed. In partnership with NCVO TSRC is involved in a project for Skills Third Sector, an initial paper has explored trends in the workforce (28). This research stream has contributed towards the 2009 NCVO Almanac, and we have plans to continue our involvement with the Almanac in the future.

TSRC will provide quarterly updates on the 'state of the sector' in terms of total employment, drawing on the Labour Force Survey. Work has been done to establish the quality and availability of data for Scotland and Northern Ireland but at the present time we have not been in a position to analyse it.

Research on qualitative analysis of a sample of third sector organisations in Scotland is already underway, funded by the Scottish Government. Further opportunities for funding from within the devolved administrations will continue to be explored.

TSRC will be one of the research sites used by UK Data Archive (in their JISC project) for data development and management.

Impact: Service Delivery

Evidence review and scoping papers have been signed off by the Service Delivery (SD) Reference Group and, the priority themes for research over the coming year have been identified as:

- social and economic impact assessment;
- completion and publication of papers on cost benefit analysis and social return on investment, and other models of organisational impact assessment;
- third sector partnerships for service delivery: innovation and

learning in third sector service providers;

- more detailed analysis of the role of third sector organisations within specific service sectors.

Six housing papers (10, 11, 16, 17, 18, 19) have been published exploring all aspects of housing provision. A paper reviewing the personalisation agenda has been published (30); and an initial paper exploring criminal justice and the third sector has also been published (34).

The sectors on which we will focus specifically in the coming

year will be:

- health and social care housing
- employment services
- environment
- criminal justice.

This research will help to inform planning for service delivery at individual and organisational level, and will also contribute to the development of strategic policy intervention to support third sector organisations engaging, or seeking to engage, in the provision of public services.



*We will provide
critical analysis
of current
approaches to
evaluation and
impact
assessment,
including Social
Return on
Investment
(SROI)*

Impact: Below the Radar

This research stream has produced four papers: exploring Below The Radar (BTR): issues of themes and focus (8); micro mapping methodologies (9); a literature review (29); and, the distinctiveness of BTR (33).

A number of events have been organised including Rethinking Cohesion; Participatory Action Research; Alternative Forms of

Non Governmental Organisations (international perspectives); and Empowering Migrant and Refugee Community Organisations.

Initial BTR baseline interviews with 29 individuals/agencies have been completed and analysed with papers in progress.

As part of the 'Real Times' qualitative longitudinal study, the BTR case studies have been negoti-

ated and are in progress. Blog and discussion sections on TSRC's website have commenced and are in further development. Volunteers and community researchers have been recruited to help with the BTR micro-mapping.

A Black and Minority Ethnic (BME) cross-cutting work-stream has emerged from the BTR work.

Impact: Economic and Social

One of TSRC's research streams is focused on the measurement of the social and economic impact of third sector organisations. This extends across the range of third sector organisational activity, but includes in particular the contribution that organisations within the sector make to the delivery of public services. This is a long term programme of activity, but over time it will provide a significant contribution to the practices of the third sector in evaluating the impact of their activities, and also provide aggregate measures of the broader contribution of the sector to social and economic outcomes.

Some initial think pieces have been produced by looking at the economic impact of the third sector (14), boundaries between sectors (25), the different values of the sector (26) and how the sector evaluates their impact (27).

Qualitative work at Southampton on 'Organising the Third Sector', which looks at working lives and organisational challenges will be commenced; and we will take forward work on the role of volunteering within welfare to work policies.

We will provide critical analysis of current approaches to evaluation and impact as-

essment, including Social Return on Investment (SROI), and advice on the advantages or disadvantages of different models. We will also explore the use of aggregate measures of third sector social and economic impact employing analysis which can utilise aggregate information contained in existing datasets.

We will be recruiting a Reference Group to advise and assist in the development of this research stream and the dissemination of its findings

Social Enterprise

The social enterprise (SE) research stream is led by Fergus Lyon, University of Middlesex. This is a cross cutting research theme and has produced nine papers exploring: SE and social exclusion (3), homelessness (5), mapping (4), measuring the value of SE (7), how SE relates to the third sector (15), the environment (22), impression management (23), the failure of SE (31), and their regional geography (35). A number of papers have been successfully submitted to journals.

The Reference Group have met three times. Future plans include learning and innovating in SE, partnerships in delivery of public services, SE in the local context, public policy and the role of SE, gender and SE and quantitative measuring and mapping of SE.

CBC: Social Enterprise



CASE PhD Studentships
Co-funded PhD students

Middlesex University
UnLTd
Ethnic Minority Foundation
Development Trust Association
Crisis
Coops UK

**Knowledge Transfer Partner-
ships (KTP)**

London South Bank University
RNID
RNIB

Middlesex University
London Early Years Foundation
Social Enterprise East Midlands

Middlesex

Action for Kids:
Development Agency Funding
And Resources For Small Black
Asian And Minority Ethnic Organi-
zations
Social Firms UK

LSBU

Mosaic- Homeless offenders,

Placements

LSBU

Salvation Army
B-Hug



Durham

One North East
Acumen
Pioneer Projects, North Yorkshire
Home Group, Newcastle
ETEC, Sunderland

Vouchers

CBC: Community Engagement



CASE PhD Studentships

Goldsmiths University
Exeter CVS
Somali youth Organisation
South Wales WEA

**Knowledge Transfer Partner-
ships (KTP)**

University of Lincoln
Children's Links.

Vouchers and Placements

Goldsmiths has agreed to offer 2
placements and five vouchers to
strengthen research capacity.
Manchester Metropolitan has
agreed one placement.



University of Lincoln
Lincolnshire Assembly.
Lincolnshire Voluntary Sports
Forum

Goldsmiths University London
Multi-faith regeneration network
and the Community Sector Coali-
tion



Manchester MU

Gender and Participation Unit
Manchester Refugee Support
Network.

CBC: Economic Impact



CASE PhD Studentships:

Charities Aid Foundation
New Philanthropy Capital
South West forum
TRIADOS (tbc)

Vouchers/ MSc internships

NCVO
Bristol Festival
Women's Resource Centre

Placements

We are postponing the develop-
ment of placements until later
years; we will think about using
these flexibly (e.g. shorter place-
ments) to maximise the benefits
for participants.

**Knowledge Transfer Partner-
ships (KTP)**

New Philanthropy Capital
Barclays capital
RISE

We are developing processes –
and pro-formas – for both vouch-
ers and Msc internships.

Note: Bristol commenced
January 2010

Knowledge Exchange

The first phase of the Knowledge Exchange Team's (KET) strategy was to establish a web-based interactive presence and to raise the profile of TSRC within stakeholder communities. The team have done this over the past six months by:

- establishing a website with video's, RSS feeds, blogs, discussion boards and research undertaken by TSRC to download;
- attending events, having over a dozen stands at national membership organization's annual meetings (approximate attendance 300 – 600 at each event)

and leaflets included in delegate packs for specialist target events;

- presenting at regional, national and international conferences.
- Established a 'critical circle of friends' group which acts as a sounding board for KET's work

The next phase of KET's work will be to co-host events in 2010 with partner organisations. Based on the work undertaken by researchers KET has produced a Briefing Paper series available to download from our website; a CD of our research; general leaflets and postcards to target different audiences. To date 35 papers

have been published and nearly 500 hard copies of each of our first round of publications disseminated at events across the UK.

KET have also established an e-newsletter which goes out every two months to a distribution list of over 800 contacts. We have over 30 reciprocal web links.

TSRC has publicised its activities in the newsletters of several partner organisations including NCVO, ESRC ARVAC, and the Evidence Network.

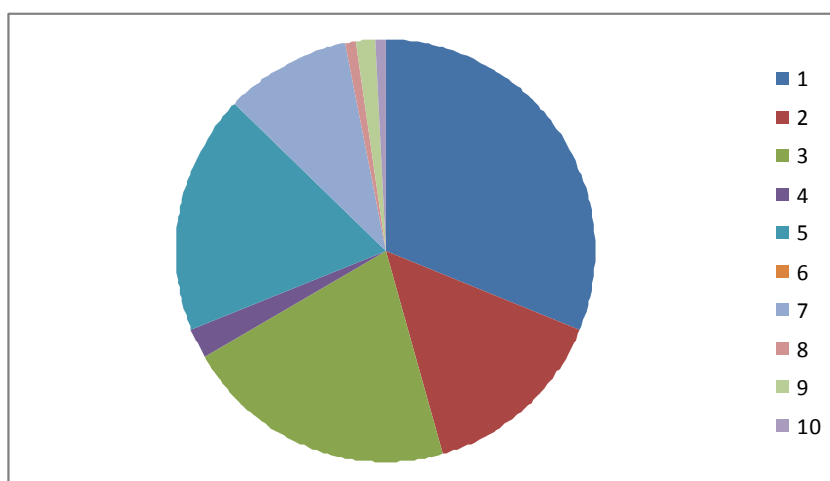
Find out more www.tsrc.ac.uk



KET Stand at NAVCA Conference in Blackpool, Naomi Landau, Knowledge Broker with Chris Frost (Chief Executive of Merton Voluntary Service Council) .

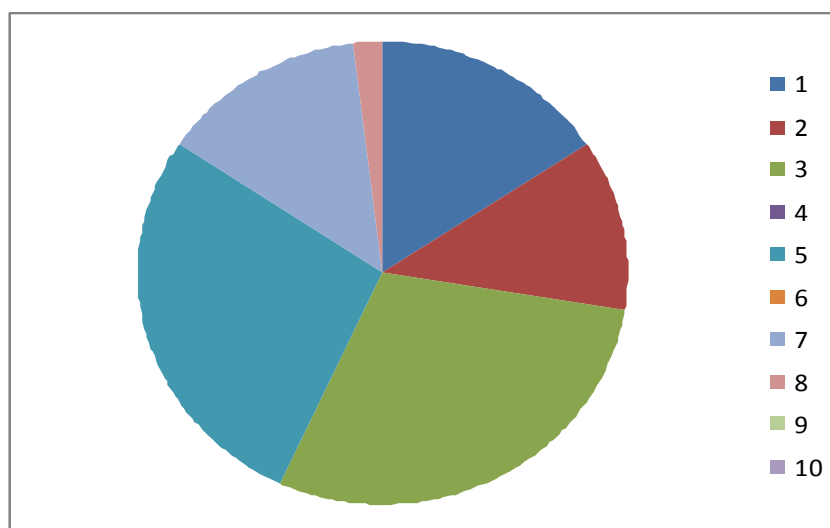
TSRC presenting to different audiences: proportion of participants from different target audiences

- 1=researcher/academic
2= policy maker
3= practitioner
4=funder
5=third sector
6= local infrastructure orgs
7= public sector
8 = community/refugee/BME
9 = private sector
10= knowledge exchange



Knowledge exchange audience profile

Stands and stalls with leaflets, Abstracts, Briefing Papers at events, seminars and conferences



Sept 2009—March 2010

Papers Published to date

September 2009

Paper 1: Research approach and strategy of TSRC, Pete Alcock

Paper 2: Devolution or divergence? Third sector policy across the UK since 2000, Pete Alcock

Paper 3: Can social enterprise address social exclusion? Evidence from an inner city community, Simon Teasdale

Paper 4: Mapping social enterprises: past approaches, challenges and future directions, Fergus Lyon and Dr Leandro Sepulveda

Paper 5: Innovation in the homeless field: how does social enterprise respond to the needs of the literal homeless population? Simon Teasdale

Paper 6: Individual voluntary participation in the UK, Laura Staetsky (Abstract only)

Paper 7: Measuring the value of social and community impact: the role of social enterprises in public services, Fergus Lyon

Paper 8: Exploring below the radar: issues of themes and focus, Angus McCabe and Jenny Phillimore

Paper 9: Micro mapping exercise, Andri Soteri-Proctor (Abstract only)

November 2009

Paper 10: Housing scoping papers: overview, David Mullins, Patricia A Jones, Ricky Joseph, Rob Rowlands and Simon Teasdale

Paper 11: Housing scoping papers: self-help housing, David Mullins

Paper 12: User and community co-production of public services: fad or fact, nuisance or necessity? Tony Bovaird

Paper 13: Losing political innocence, Jeremy Kendall

Paper 14: Economic analysis and the third sector, Andrea Westall

Paper 15: Outsider, missing link or panacea? The place of social enterprise (with)in and in relation to the third sector, Leandro Sepulveda

Paper 16: Housing scoping paper: housing associations, David Mullins

Paper 17: Housing scoping papers: mutuals and cooperative housing sector, Rob Rowlands (TBF)

Paper 18: Housing scoping papers: the tenants and community movement, Patricia A Jones

Paper 19: Housing scoping papers: homelessness advice and support, Ricky Joseph

Paper 20: Service delivery: overview and evidence review, Rob Macmillan (TBF)

Paper 21: Service delivery: scoping paper, Tony Bovaird (TBF)

January 2010

Paper 22: Social enterprise and the environment, Ian Vickers

Paper 23: The contradictory faces of social enterprise, Simon Teasdale

Paper 24: A strategic unity: defining the third sector, Pete Alcock

Paper 25: Value and the third sector, Andrea Westall

Paper 26: Business or the third sector? Andrea Westall

Paper 27: Impact and evaluation of the third sector, Malin Arvidson

March 2010

Paper 28: The growing workforce in the voluntary and community sectors, Domenico Moro and Stephen McKay

Paper 29: Below the radar: a summary review of the literature, Angus McCabe, Jenny Phillimore and Lucy Mayblin

Paper 30: The personalisation agenda, Helen Dickinson

Paper 31: Black boxes in the wreckage? Making sense of failure in a social enterprise, Duncan Scott

Paper 32: Partnership and mainstreaming: voluntary action under New Labour, Pete Alcock

Paper 33: Understanding the distinctiveness of small scale third sector activity, Angus McCabe, Jenny Phillimore (TBF)

Paper 34: The role of the third sector in work with offenders, Rosie Meek, Dina Gojkovic and Alice Mills

Paper 35: The regional geography of social enterprises in UK, Heather Buckingham, Steven Pinch and Peter Sunley

Staff Team

Core Team

Birmingham

Director
Peter Alcock

Centre Manager
Catherine Butt

Centre Secretary
Rebecca Berridge

Southampton

Deputy Director
John Mohan

Finance Manager
Rachel Cooper

Editorial Assistant
Ellie Rivers

Personal Assistant
Nicki Elvins

London

Knowledge Exchange Team
Naomi Landau
Razia Shariff

Researchers

University of Birmingham

Tony Bovaird
Helen Dickinson
Rob Macmillan
Angus McCabe
Steve McKay
Domenico Moro
David Mullins
Jenny Phillimore
Andri Soteri-Proctor
Rebecca Taylor
Simon Teasdale

University of Southampton

Malin Arvidson
Peter Backus
Milena Buchs
Heather Buckingham
David Clifford
Rebecca Edwards
Dina Gojkovic
Susan Halford
Pauline Leonard
Andrew McCulloch
Rosie Meek
Alice Mills
Steven Pinch
Frida Rajme
Graham Smith
Peter Sunley

Middlesex University

Fergus Lyon
Leandro Sepulveda

University of Kent

Jeremy Kendall

TSRC Fellows

Honorary Fellow

Dr Nick Acheson,
Social and Policy Research Institute, University of Ulster

Dr Sarah Anne Munoz, UHI Centre for Rural Health

Professor Paul Milbourne,
City and Regional Planning, Cardiff University

Dr Alex Nicholls,
Skoll Centre for Social Entrepreneurship, University of Oxford

Professor Stephen Osborne, Director of the Centre for Public Services Research, Edinburgh Business School

Associate Fellow

Professor Gary Craig, University of Durham

Lucy Mayblin, University of Warwick

Dr Jane Parry, Independent researcher

Dr Duncan Scott

Andrea Westall

Practice Fellow

Bryan Collis, Senior Research Officer, Welsh Council for Voluntary Action (WCVA)

Joy Dobbs
Research and Statistics Consultant, Office of National Statistics (seconded to NCVO)

Dr Ruchir Shah, Policy Manager, Scottish Council of Voluntary Organisations (SCVO)

Dr Karl Wilding, Head of Research, National Council of Voluntary Organisations (NCVO)

Staff Away Day, September 2009



Advisory Board

Rosie Anderson, Policy Officer, Community Matters

Stephen Bubb, CEO, Association of Chief Executives of Voluntary Organisations (ACEVO)

Helen Carr, Head of Policy Development and Review, Charity Commission

Nick Chase, Head of Policy and Research, Action with Communities in Rural England (ACRE)

Kevin Curley, Chief Executive, National Association for Voluntary and Community Action (NAVCA)

Katharine Danton, Research Director, UnLtd

Emeritus Professor Nicholas Deakin, Chair – Elect, Steering Committee for the Centre for Charitable Giving and Philanthropy

Professor Peter Halfpenny, Executive Director, ESRC National Centre for e-Social Science, University of Manchester

Professor Jenny Harrow, Co-Director of Centre for Charitable Giving and Philanthropy (CGAP), CASS Business School, City University, London

Peter Holbrook, Chief Executive, Social Enterprise Coalition

Steven Howlett, Chair, Association for Research in the Voluntary and Community Sector

Helen Hughes, National Adviser, Voluntary and Community Sector, Improvement and Development Agency (IDeA)

Michael Hughes, Director of Studies, Audit Commission

Arjumand Kazmi, Head of Policy, Voice4Change England

Sara Llewellyn, Chief Executive, Barrow Cadbury Trust

Professor John Mawson, Director, Institute for Local Governance, University of Durham

Tim Wilson, Director of Performance Programme, Charities Evaluation Services (CES)

Nick Ockenden, Head of Research and Acting Director from March 2010, Institute for Volunteering Research (IVR)

Mark Parker, Head of Policy, bassac

Professor Rob Paton, Professor in Social Enterprise, Open University, Public Leadership & Social Enterprise Research Unit (PuLSE)

Professor Ken Peattie, Director, Centre for Business Relationships, Accountability, Sustainability and Society (BRASS) - Chair

Heather Petch, Director, Housing Associations' Charitable Trust

Professor Cathy Pharoah, Co-Director CGAP, CASS Business School, City University, London

Matthew Scott, Director, Community Sector Coalition

Dr Cheryl Turner, Department of Business, Industry and Skills

Jackie Westlake, Head ,Third Sector and Social Enterprise Team, Department of Communities and Local Government (CLG)

Karl Wilding, Head of Research, National Centre for Voluntary Organisations

Dr Ben Wright, Policy and Research Officer, Council of Ethnic Minority and Voluntary Organisations

Steve Wyler, Director, Development Trust Association



Ken Peattie, Chair of Advisory Board at its first meeting



Reference Groups

REGIONAL

Scotland

ACOSVO, Pat Armstrong
 Edinburgh Napier University, Colin Lindsey
 OSCR, Louise Meikleham
 SCVO, Ruchir Shah
 Scottish Government, Kay Barclay/ Julieanne Murphy
 University of the Highlands and Islands, Philomena DeLima
 University of Strathclyde, Eleanor Shaw

Wales

Aberystwyth University, Elin Royles
 Bangor University, Graham Day
 Cardiff University (Social Enterprise), Celine Chow
 Cardiff University, Bella Dicks
 Social Enterprise Solutions Ltd, Shannon Robinson
 WCVA, Bryan Collis

Northern Ireland

Department for Social Development in NI, Ray McGivern
 NICVA, Stephen Bloomer
 Social Economy Network, Ann Graham
 SEPG, Department of Enterprise Trade and Investment, tbc
 University of Ulster, Gillian Robinson

RESEARCH STREAMS

Service Delivery

A4E Skills, Mark Lovell
 Adventure Capital Fund, Denise Platt
 ACEVO, Stephen Bubb - Chair
 Audit Commission, Michael Hughes
 Barnardo's, Julian Walker
 Cabinet Office, Ben Jupp
 Catch 22, Joyce Moseley
 CMPO, University of Bristol, Sarah Smith
 Centre for Public Service Partnerships, John Tizard
 Counsel and Care, Stephen Burke
 London Community Recycling Network, Matthew Thomson
 National Audit Office, Akhil Patel
 Office of Public Management, Sue Goss
 Office of the Third Sector, Pat Samuel
 Institute for Civil Society Studies, Sweden, Victor Pestoff
 Serco, Richard Johnson
 Social Enterprise Coalition, Lidija Mavra

Social Enterprise

Acumen Development Trust, Kate Welch
 BRASS, Cardiff University, Ken Peattie - Chair
 Co-operatives UK, John Goodman
 Dept of Health, Amitti Canaga Retna
 Dept of Health, Emma Carter
 EMES European Research Network, Martha Nyssens
 Office of the Third Sector, Katherine Purser
 Social Enterprise Coalition, Lidija Mavra
 University of Oxford, Alex Nicholls
 University of Trento, Italy, Carlo Borzaga
 UnLtd, Katherine Danton

Below the Radar

ACRE, Nick Chase
 Aston University, Margaret Harris
 Barrow Cadbury Trust, Sara Llewellyn
 BASSAC, Mark Parker
 BRAP, Joy Warmington
 City Parochial, Sioned Churchill
 Community Development Exchange (CDX), Nick Beddow
 Community Development Foundation, Alison Seabrooke
 Community Matters, Rosie Anderson
 CEFET, Laurie Moran
 Communities and Organisations: Growth and Support, Mandy Wilson
 Community Sector Coalition, Matthew Scott
 DEFRA, Simon Berry
 Department CLG, Cherron Inko-Tariah
 Faith Based Regeneration Network, Doreen Finneron
 Federation for Community Development Learning, Randi Baden
 Financial Services Authority, Priya Lukka
 Housing Association Charitable Trust, Azim El Hassan
 Independent Researcher, Chris Ford
 Independent Researcher, Dipali Chandra
 Independent Researcher, Steve Skinner
 Independent Researcher, Sue Shaw
 Office of the Third Sector, Cabinet Office, Nick Starkey/ Neil Smith
 Plunkett Foundation, Mike Perry
 Praxis, Berhanu Kassaye
 Runnymede Trust, Kjartan Sveinsson
 Teesside University, Tony Chapman
 University of Glasgow, Margaret Reid
 University of Gloucestershire, James Derounian
 University of Hull/Independent Researcher, Gary Craig
 Urban Forum, Toby Blume
 Voices4Change, Rupert Daniel
 Volunteering England, Nick Ockenden
 Voluntary Arts Network, Robin Simpson
 Women's Resource Centre, Vivienne Hayes

TSRC
*researchers have
presented their
research at 75
events to a total
audience of
5000 third
sector
stakeholders*

THIRD SECTOR RESEARCH CENTRE

**Park House
40 Edgbaston Park Road
Birmingham
B15 2RT**

**Phone: 0121 414 3086
Fax: 0121 414 7051
E-mail: info@tsrc.ac.uk**

www.tsrc.ac.uk

Key Achievements

TSRC has finalised its governance structure: recruited to its Steering Committee, Advisory Board, Research Reference Groups (six including for the devolved administrations – with more to follow), Project Management Team and held, at least first meetings where terms of reference have been agreed.

The Centre has so far published 16 Working Papers and 35 Briefing Papers covering evidence review, definitions, research methodology, case studies and early findings.

TSRC researchers and KET have attended over 125 events and presented their research at 60% of them, with over 5,000 third sector stakeholder audiences.

TSRC has produced 10 refereed journal papers, 13 book chapters and presented at 57 academic conferences.

TSRC has been visited by third sector academics and practitioners from Korea, Poland, Netherlands, Australia, Italy and Canada.

TSRC has undertaken 38 partner collaborations and been successful in applying for 19 extra research/evaluation projects.

Research on measuring impact of social enterprises have been used to inform policy at regional level (East of England), and by the Big Lottery Fund.

Birmingham, Middlesex and Southampton have set up seminar series to offer the wider public an opportunity to find out more about the research underway.

Forward Priorities

We will continue developing our research streams and start producing quantitative analysis from our cleaned datasets, as well as reflecting new emerging policy priorities to help inform evidence based policy making and practice.

A new cross-cutting research theme on BME has emerged from the Below The Radar research stream. Working with the Workforce and Workplace research stream the BME research stream will review large-scale secondary statistical datasets on paid work in the third sector, and volunteering,

to examine their usefulness for analysing aspects of BME groups in this area of study.

To help provide labour market intelligence and to identify skills and capacity gaps in the sector, TSRC (with NCVO) has set up a partnership with the Skills Third Sector. Over the next 18 months TSRC will be analysing data on the workforce in order to identify training needs within the third sector, and how any deficiencies might be addressed through the strategy of Skills Third Sector.

Other collaborative projects are also being agreed with third sector partners. A number of major events are planned to debate the research of TSRC to policy makers, thinkers and leaders, to the wider third sector and in partnership with other leading third sector organisations. This will include a mid-term event in 2011, as well as policy symposiums and impact events on research areas.

There are plans to publish books and more journal articles as well as pieces for the media.

Funded Aims of TSRC

Established a sustainable resource of robust databases on the sector, and key subsectors, in the UK

Continued efforts will be made to evaluate the quality of existing datasets and from there to make recommendations about gathering of statistics in the future, including ongoing liaison with ONS and other data providers.

Established longitudinal analysis of the sector and organisational dynamics and secured the base for ongoing analysis into the future

First phases of fieldwork will be completed for all Level A and Level B case studies, and Nvivo database established for analysis.

sector, and models which can be used by policy makers and practitioners

Further analysis and publications on models of impact assessment. Development of aggregate measures and identification of appropriate data sources for analysis.

Enhanced the capacity for research on the sector and worked closely with sector agencies to ensure a sustainable programme of knowledge transfer

Further development of website and dissemination of research findings to a wide range of audiences. TSRC's Knowledge Exchange Team will collaborate with the Public Management and Policy Association to host an event 'Good decision in hard times: assessing the value of third sector

organisations'. This event will be aimed at a wide public sector audience, interested in issues such as the value of social enterprise and the voluntary sector.

Extended theoretical and conceptual analysis of the sector to broaden and deepen the understanding of its scope and its diversity and the differential impact of policy interventions across these dimensions

Further analysis and publications planned on UK policy environment, impact of economic recession and general election. Further analysis and publications will be developed on organisations operating 'below the radar' and a black and minority ethnic subsector.