



UNIVERSITY OF  
BIRMINGHAM



BIRMINGHAM  
INTERNATIONAL  
SUMMER SCHOOL  
2022







# ONE OF THE WORLD'S TOP 100 UNIVERSITIES

# THE CITY OF BIRMINGHAM

Birmingham is a modern and exciting city, famous for its historic, industrial past. It is now a centre of arts and culture, commerce and entertainment with a vibrant and diverse community. With our very own railway station, it takes just seven minutes to travel by train to the city centre from the University campus.

Explore the city of Birmingham at [www.birmingham.ac.uk/city](http://www.birmingham.ac.uk/city)

# UNIVERSITY OF BIRMINGHAM

The University of Birmingham has been challenging and developing great minds for more than a century. Characterised by a tradition of innovation, research at the University has broken new ground, pushed forward the boundaries of knowledge and made an impact on people's lives.

We continue this tradition today and have ambitions for a future that will embed our work and recognition of the Birmingham name on the international stage.

BIRMINGHAM IS A TRULY  
GLOBAL UNIVERSITY  
PRODUCING WORLD-LEADING  
RESEARCH

THE UNIVERSITY HAS 10 NOBEL  
PRIZE WINNERS AMONG ITS  
STAFF, STUDENTS AND ALUMNI

UOB CAMPUS OCCUPIES A  
276-ACRE GREEN PARKLAND,  
ONLY THREE MILES FROM  
THE HEART OF THE CITY

INTERNATIONAL COMMUNITY  
WITH OVER 8,700 STUDENTS  
FROM APPROXIMATELY  
150 COUNTRIES

31% OF ACADEMIC STAFF  
ARE OVERSEAS NATIONALS

'Living in a cosmopolitan yet  
historical city provided me with  
a fruitful experience and offered  
me countless inspiring insights  
into the significance of culture.'

Yu, Hong Kong



'The campus of Birmingham is  
actually very beautiful; beautiful  
trees, it's full of nature.'

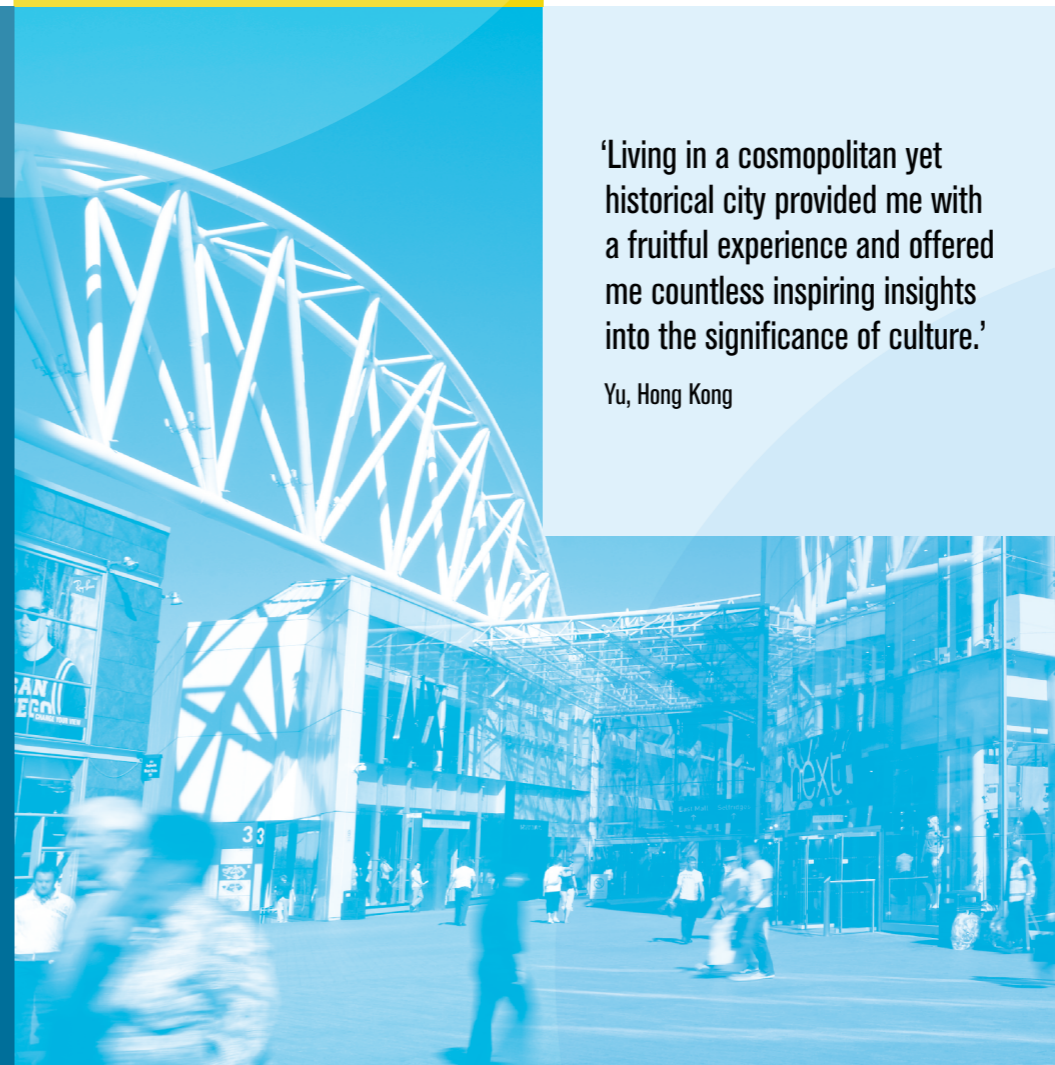
Nkhensani, South Africa

'The University campus  
is just beautiful.'

Lucas, Brazil

'The city of Birmingham has  
a rich cultural history, there's  
a lot of things to do, you have  
great food spots and a lot of  
shopping opportunities'

Pamela, Switzerland





# BIRMINGHAM INTERNATIONAL SUMMER SCHOOL

The Birmingham International Summer School gives you the chance to study at a leading top 100 University, while experiencing a global and modern city, right at the heart of the UK.

The three-week immersive programme combines both a diverse study and cultural experience, where you will meet and connect with people from around the world. While the academic programmes offer a high quality teaching and learning experience, which will enhance and broaden your study skills and knowledge, the social programme offers a range of fun and engaging activities introducing you to British culture.



**'BISS offered me a cultural and educational experience like I have never had before.'**

Joseph, USA

## ACADEMIC PROGRAMMES:

The Birmingham International Summer School offers a range of interactive academic programmes that provide an enriching and varied learning experience. Programmes offer an opportunity to earn credits and are delivered by our outstanding University academic staff who are experts in their fields.

**Academic programmes include:**

### British Cultural Heritage

An introduction to the best of British heritage exploring art, architecture, literature, music, design and popular culture that form the basis of Britain's culture and heritage and continue to shape its identity.

### Film and Media

An introduction to studying and experiencing film and media culture in the UK to offer a comprehensive picture of the disciplines and their place in modern society.

### English Language: Communicating with Confidence

This programme focuses on enhancing speaking and presentation skills in English Language in a range of public communication settings. Concentrating on preparation, personal delivery skills, pronunciation, intonation and body language techniques.

### Global Environmental Issues

This programme considers current global environmental issues, particularly focussing on air, water and soil pollution, and strategies for emissions reduction and/or remediation of polluted sites.

### Mathematical Finance and Financial Time Series Analysis

Gain a valuable insight into the fascinating yet challenging field of quantitative finance. This programme covers the fundamental knowledge in financial engineering, which is a highly specialised and rapidly growing area.



### The Biomedical Science Research Challenges

Biomedical Science is at the forefront of cutting-edge research, from defining underpinning mechanisms in disease pathophysiology to finding solutions to our global healthcare challenges. Work alongside world-leading experts and undertake your own unique research project to develop experimental laboratory skills and improve your research expertise.



**'In the summer school you can learn leading-edge knowledge in a world-class University.'**

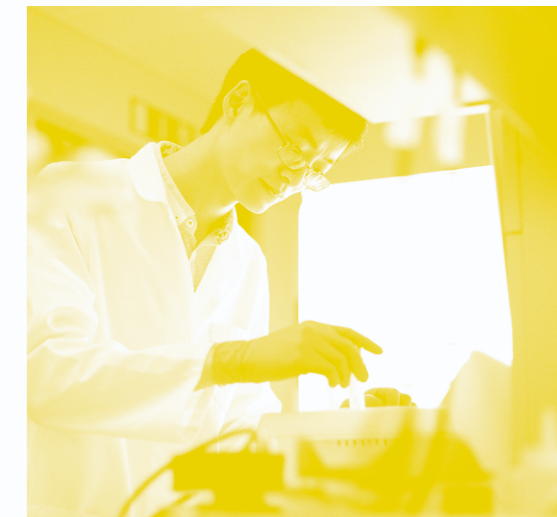
Yucao, China



### Credits

*Each academic programme offers 20 UK credits, which are generally equivalent to 5 US credits or 10 ECTS credits. Please check with your home institution regarding credit transfer.*

*For detailed information about programme content please visit the [BISS website](#).*





# SOCIAL AND CULTURAL PROGRAMME

'Great! I had the opportunity to meet so many people from different parts of the world and got to explore England through the many different day trips that I would have not thought of.'

Shanisha, Canada



The inclusive social programme is a great opportunity to enjoy a range of activities and events, designed to complement your experience of living and studying in Birmingham. It's a fun and lively way to experience a new culture, explore the UK and socialise with friends.

You will experience the social programme on the historic and beautiful green campus of Birmingham through entertaining events, accompanied by day trips to iconic UK cities, as well as local cultural attractions and activities, giving you the opportunity to get to know fellow students whilst exploring the diverse city of Birmingham and the UK. Highlights of the programme have included day trips to Cambridge and Oxford with organised city experiences, theatre performances and sports activities and much more.

'I gained a fantastic learning experience, a better appreciation of British culture, and new friends from all over the world!'

Erin, Canada



'All in all a really fun experience that lets you see into the heart of the UK.'

Adham, Singapore

'BISS was an exceptional and international experience for me.'

Maren, Germany

# APPLICATION AND ENTRY REQUIREMENTS

To be considered you will need to meet the general Birmingham International Summer School entry requirements as well as specific entry requirements of your chosen academic programme where applicable.

## General entry requirements:

- Be studying an undergraduate programme at a university outside the UK or be registered as an International student at a UK university
- Be of good academic standing based on a translated transcript verified by your university
- Be aged 18 years or over at the start date of the BISS programme

## English Language Requirements:

Applicants will be required to provide evidence of their English proficiency demonstrating they have achieved one of the following qualifications:

- IELTS 6.0 overall with no lower than 5.5 in any band
- TOEFL IBT 80 overall with no less than 19 in listening, 19 in reading, 21 in speaking and 19 in writing
- Pearson Test of English (PTE) 64 with no less than 59 in all four skills

Equivalent English Language qualifications may also be considered. Contact the BISS Office for information at [biss@contacts.bham.ac.uk](mailto:biss@contacts.bham.ac.uk)

## Academic specific requirements:

Subject specific requirements may also apply. Please check **online** for further details.

## APPLY ONLINE

Early application deadline:

**7 March 2022**

Application deadline:

**12 April 2022**

For more information contact BISS:

Web: [www.birmingham.ac.uk/biss](http://www.birmingham.ac.uk/biss)

Email: [BISS@contacts.bham.ac.uk](mailto:BISS@contacts.bham.ac.uk)



The 2022 three-week international summer school will take place:

**18 JULY-5 AUGUST 2022**

Fees include:

- Tuition and accompanied field trips
- En-suite accommodation
- Social and cultural programme

For information on fees and discounts please check **online** for up-to-date details.







Contact us:

[www.birmingham.ac.uk/biss](http://www.birmingham.ac.uk/biss)  
[BISS@contacts.bham.ac.uk](mailto:BISS@contacts.bham.ac.uk)



UNIVERSITY OF  
BIRMINGHAM

Edgbaston, Birmingham,  
B15 2TT, United Kingdom  
[www.birmingham.ac.uk](http://www.birmingham.ac.uk)

Designed by

UNIVERSITY OF  
BIRMINGHAM

creativemedia