



Ribeiro et al., Monocytes and MSC, Irish Flow Cytometry Society Meeting, Dublin 25th – 26th February 2014



Development of a flow cytometry-based assay for the immunomodulatory properties of human Mesenchymal Stromal Cells

Andreia Ribeiro, Matthew Griffin, Thomas Ritter, Shirley Hanley, Rhodri Ceredig

Immunology group, Regenerative Medicine Institute, NUI Galway



Introduction

Human bone marrow derived mesenchymal stromal cells (hBM MSC) have been described as possessing immuno-modulatory properties, affecting immune cells in many ways. However, there is a commercial need for a reliable, rapid, quantifiable assay to assess their potency. For this propose, we developed a rapid flow cytometry-based screening whole blood assay.

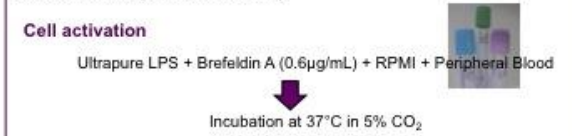
Aim of the study

To determine the effects of MSC on the production of TNF- α and IL-12 by LPS-stimulated monocytes.

Methods


A number of factors were considered prior to optimizing the assay, including:

- Anticoagulant (Heparin; EDTA and Citrate)
- Blood dilution (1/2; 1/5; 1/10; 1/15; 1/20 and 1/30)
- LPS concentration (0.5ng/ml, 1ng/ml, 2ng/ml, 5ng/ml, 10ng/ml and 20ng/ml)
- Incubation time (4h, 6h, 8h and 24h)



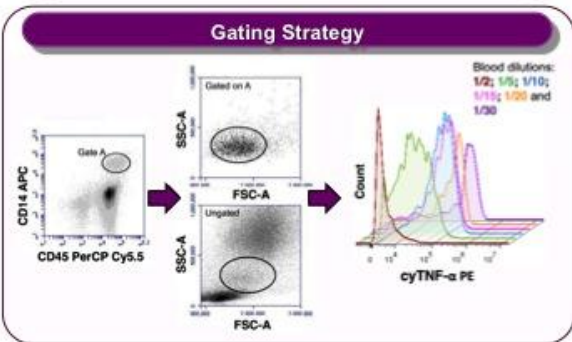
Intracellular staining

We used the IntraPrep Kit, from Beckman Coulter, according to the manufacturer's instructions. We used CD45^{PerCP}Cy5.5 and CD14^{APC} markers to identify monocytes and following fixation, analyzed the intracellular expression of TNF- α ^{PE} or IL-12/IL-23p40^{PE}. After staining, samples were acquired using the BD Accuri C6 four color flow cytometer.



Data Analysis

Samples were analyzed using both Cflow, and FlowJo 7.6.1. software. Statistical analyses were carried out using Microsoft Office Excel.



Acknowledgements

This work was supported by Science Foundation Ireland 11/TIDA/B2033 TIDA Feasibility study

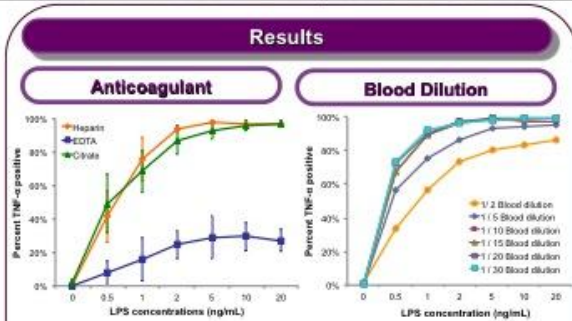


Figure 1 – Expression of TNF- α in Classical Monocytes. The blood was collected into 3 different tubes with anticoagulant. Monocytes were stimulated during 6h in different LPS concentrations, and were diluted x5 (n=4).

Figure 2 – Expression of TNF- α in Classical Monocytes. The blood was collected and diluted in Heparin. Monocytes were stimulated during 4h in different LPS concentrations, and were diluted x5 (n=4).

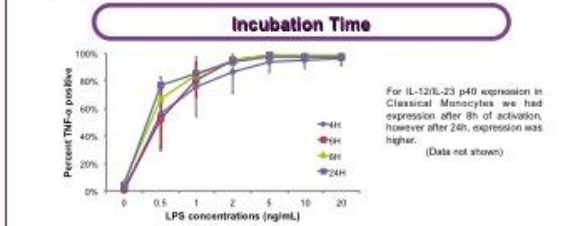


Figure 3 – Expression of TNF- α in Classical Monocytes. Monocytes were stimulated during 4h, 6h, 8h or 24h. The blood was collected in Heparin tubes and was diluted 5 times, and activated in different LPS concentrations (n=4).

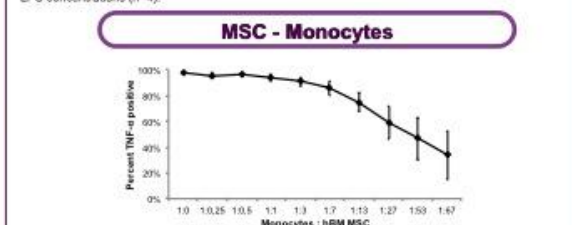


Figure 4 – Immunosuppression of TNF- α expressed by monocytes in the presence of MSC. Intracellular TNF- α expression by classical monocytes decreased in an MSC dose-dependent manner, in the presence of 1ng/mL LPS, at 1/10 blood dilution and after 6 hours of incubation. These results are an average of 3 different bone marrow donors and 5 different blood donors. Blood was collected in Heparin tubes (n=3).

Conclusions

- Heparin was the best anticoagulant in terms of cell activation. This was because anticoagulants containing divalent cation chelating agents removed Ca²⁺ which was found necessary for optimal monocytes activation.
- Detection of intracellular TNF- α expression was optimal at 6h whereas IL-12 became optimally detectable by 24h (data not shown).
- We detected optimal cytokine expression using a 1/10 blood dilution and 1ng/mL of LPS.
- We found promising preliminary results showing that MSC had a dose-dependent suppressive effect on monocyte activation.
- In conclusion, hBM MSC have the capacity to immunoregulate monocytes, and we have established a rapid, quantifiable assay to determinate the effects of hBM MSC on monocyte activation.

